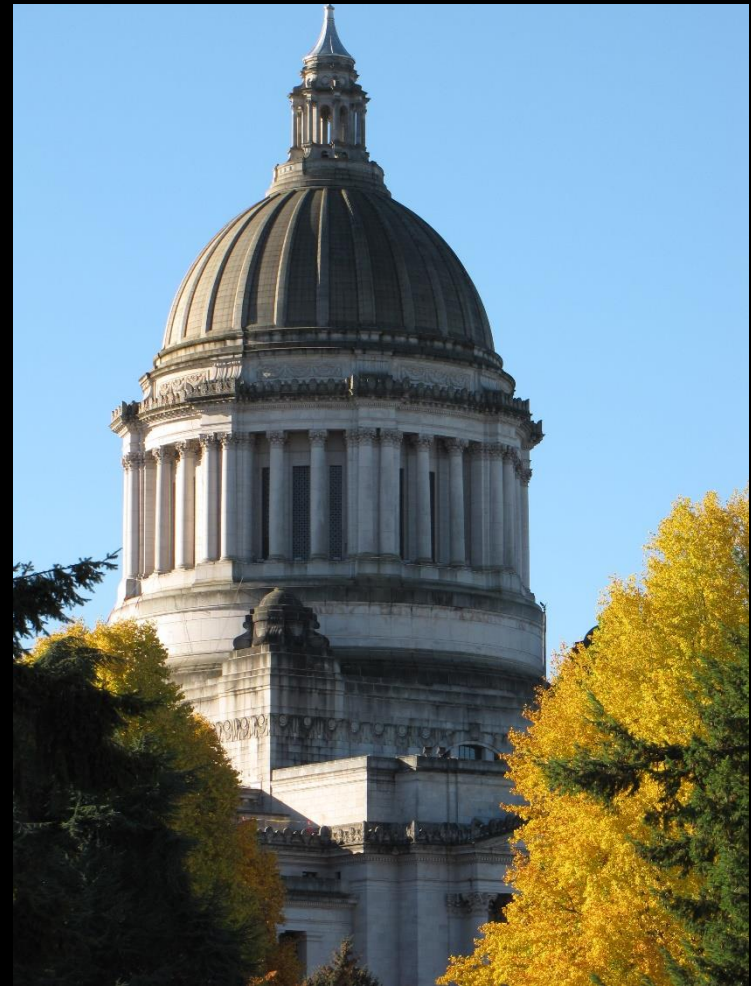
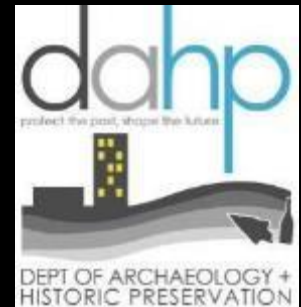


Washington State
**GOVERNOR'S
ADVISORY
COUNCIL ON
HISTORIC
PRESERVATION**

180th Meeting - virtual



zoom





Naval Air Station Pasco – Control Tower & Hangar



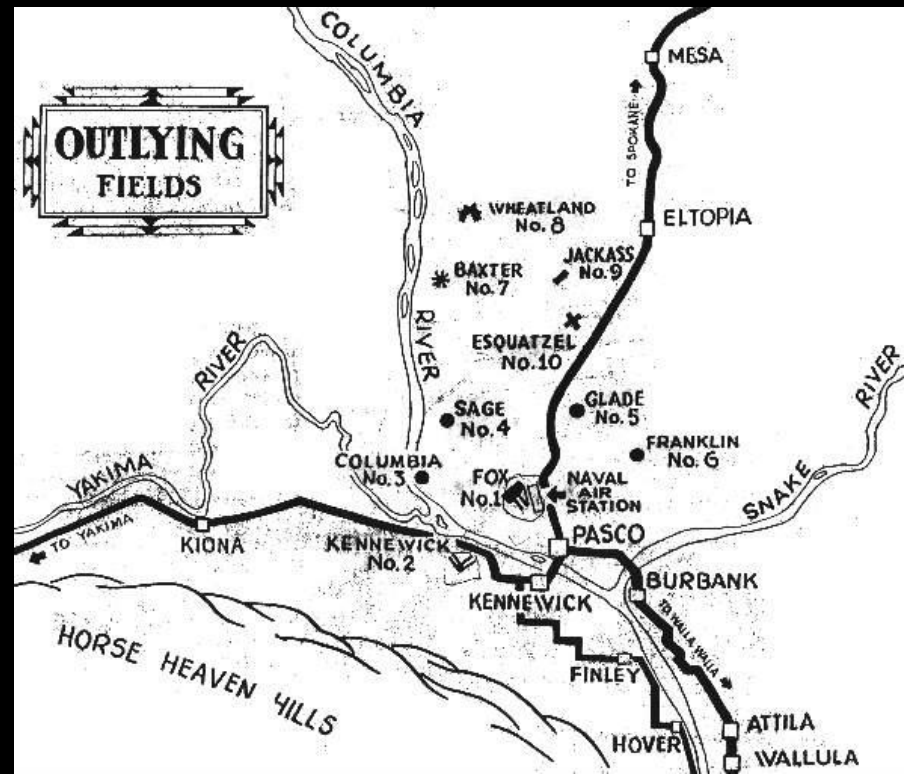


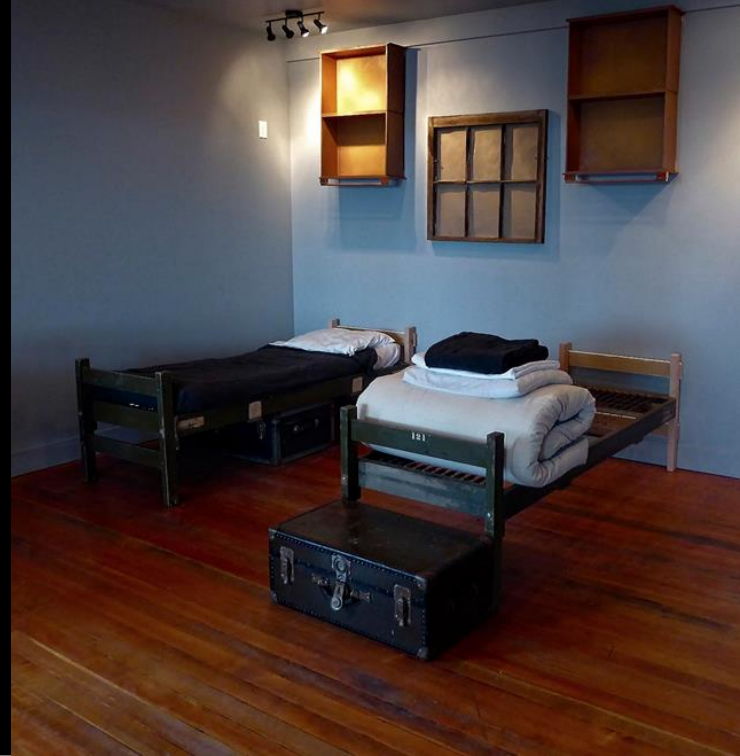




This aerial view of the **Pasco Naval Air Station** was taken during the peak activity at the base in 1944. More than 150 fighter and bomber planes dotted the airstrip. Hangars were to the immediate right of the aircraft and barracks were upper

right. Building with stacks at right-center was the power-steam plant. The main control center and field have now been converted into a commercial airport.









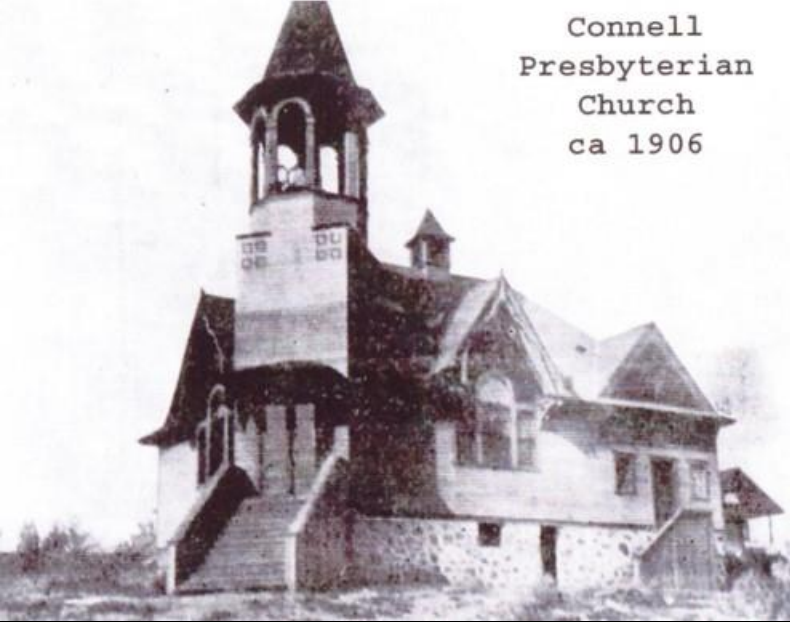




First Presbyterian Church of Connell



Connell
Presbyterian
Church
ca 1906















Connell Heritage Museum

CONNELL
HERITAGE
MUSEUM



Trinity Lutheran Church



TRINITY
LUTHERAN
CHURCH

Welcome
10:00 A.M.
SUNDAY
WORSHIP

TRINITY
LUTHERAN
CHURCH

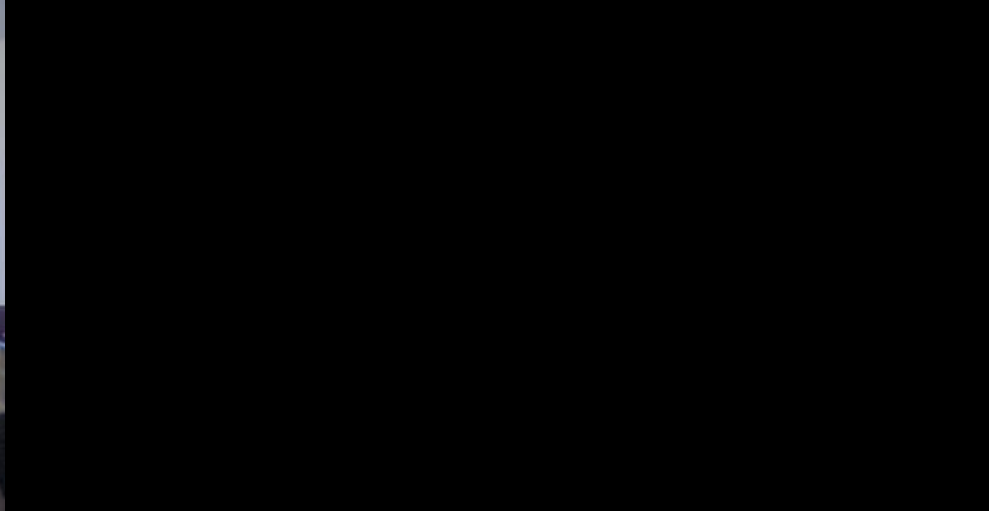














TRINITY
LUTHERAN
CHURCH
WORSHIP 10:00 AM
Everyone Welcome

TRINITY LUTHERAN CHURCH
1000 W. 10th St. - Fairbanks, Alaska 99701
(907) 452-1111

TRINITY
LUTHERAN
CHURCH



American Legion Centotaph

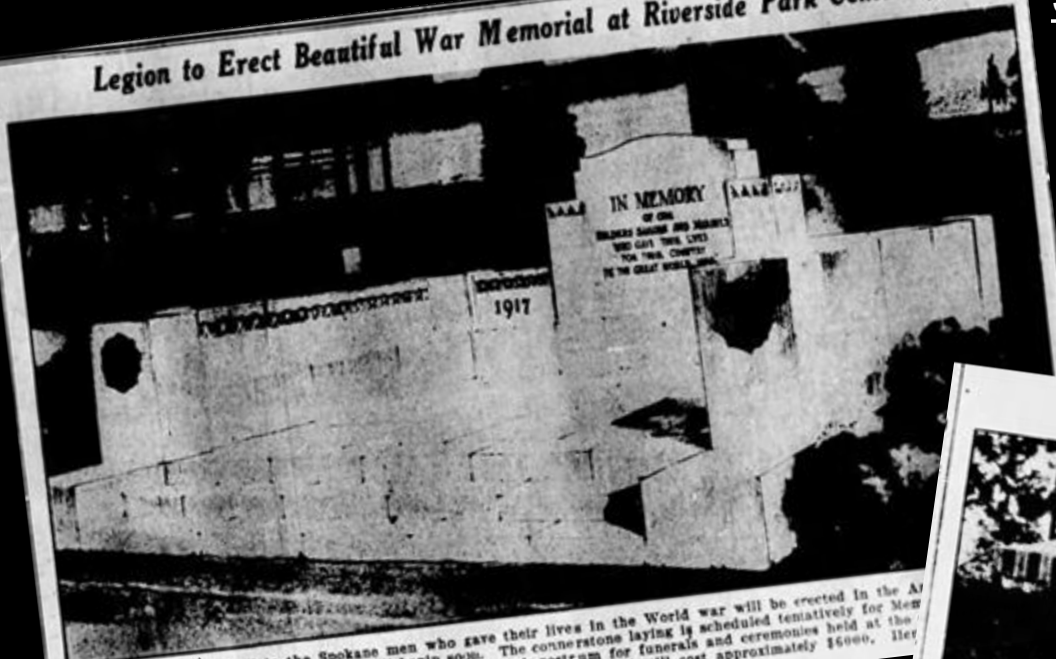
IN MEMORY
OF THOSE
WHO GAVE THEIR LIVES
FOR THEIR COUNTRY
IN THE WORLD WARS



IN MEMORY
OF THOSE
WHO GAVE THEIR LIVES
FOR THEIR COUNTRY
IN THE WORLD WARS

Spokane Chronicle –
April 2, 1930

Legion to Erect Beautiful War Memorial at Riverside Park Cemetery



This beautiful plot at Riverside Park Cemetery for Armistice Day will be erected in the Spokane men who gave their lives in the World War will be erected in the Armistice Day. Construction will begin soon. The cornerstone laying is scheduled tentatively for November 11. The memorial will serve as a speaker's rostrum for funerals and ceremonies held at the cemetery. The memorial will cost approximately \$5,000. It will be used in the construction. The memorial will cost approximately \$5,000. It will be used in the construction.

Legionnaires Inspect Their New Memorial



Rapid progress is being made in the erection of the new American legion memorial in Riverside Park cemetery. This picture shows a part of the stonework in place, with the rest stacked nearby. The men inspecting the work are, left to right: Henry Bertlesen, architect; W. C. Manson of the memorial committee; Claude Padgett, chairman of the cemetery committee, and Charles Casey, post commander. The memorial will be dedicated the morning of Armistice day.

Use Spokane Valley Granite for American Legion Memorial



Spokane valley granite, prepared by American legion workmen, sold by a legion salesman, cut to the size of a legion memorial, will go into construction of the legion memorial to be dedicated at Riverside cemetery on Armistice day. In the picture Henry Bertlesen, architect, is explaining to C. W. Manson, president of the Empire Granite works which furnished the stone, just how the emblem is cut into one of the massive slabs of Dishman granite. J. M. Simonson, legion stone cutter, is pointing out the emblem of the slab. John R. Cassin, in the background, is secretary-treasurer of the granite works.

Spokane Chronicle –
October 29, 1930



MOTHERS UNVEIL LEGION MEMORIAL ARMISTICE DAY

Beneath branches of stalwart pines that guard the graves of World war veterans in the American legion burial plot at Riverside park cemetery will gather a group of Gold Star Mothers at 10:30 o'clock Armistice morning to unveil the \$7000 legion memorial to its dead.

Final plans for an impressive dedication of the memorial were announced last night by C. A. Padgett, chairman of the committee, at the legion meeting at the Desert hotel.

Casey Will Preside.
Commander Charles Casey will preside over the ceremonies, which will open with music by the Fourth Infantry regimental band.

Bishop Cross will offer prayer and the American legion double quartet will sing "Kindly Light." Mrs. D. McCadan, a Gold Star Mother, will unveil the monument and speak for members of her organization.

Attorney Edward W. Robertson, past state commander, will deliver the dedicatory address. The Rev. Fred W. Osborne, post chaplain, will close the ceremonies with benediction.

The Armistice parade at 11:45 o'clock and dedication of the Lincoln memorial at 12:30 o'clock will follow the legion dedication.

Spokane Chronicle –
November 11, 1930

KEMP & HEBERT

In Observance of

Armistice Day

The Kemp & Hebert Store Will Be
Closed All Day Tomorrow, Tuesday

Nov. 11th

Armistice Day Program

Dedication American Legion Cenotaph at Riverside Cemetery at 10:30 A. M.

Armistice Day Parade starts at Monroe and Riverside at 11:45 A. M.

Unveiling Abraham Lincoln Memorial Statue—Main and Monroe at 12:30 P. M.

Gonzaga-Haskell Indian Football game, 2:15

Legion Banquet, Silver Grill, 6:30

Chain Dances at Garden, Moose Hall and Davenport Hotel at 9 P. M.

Gold Star Mothers Dedicate Legion Memorial



Here's where Spokane's observance of Armistice day began at 10:30 o'clock this morning—the new American legion memorial in Riverside cemetery. Gold Star mothers who lost sons in battle overseas were seated about the inside of the native granite enclosure, facing the wreath-crowned slab in the foreground which symbolizes the grave of the Unknown Soldier, when the memorial was formally dedicated. The memorial represents an expenditure of \$7500, a fund built by the legion through eight tedious years.

Spokane Chronicle –
November 4, 1930





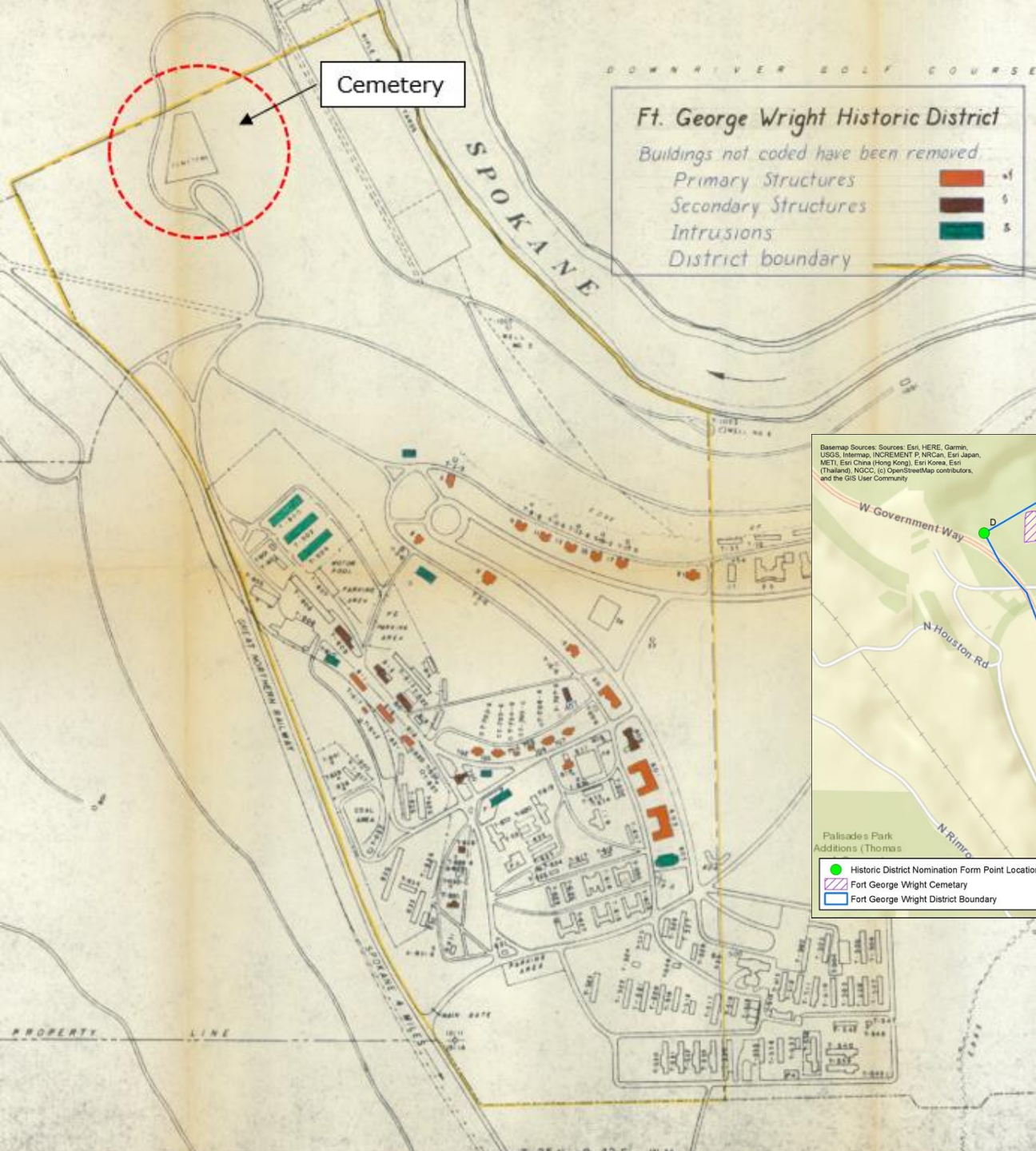
IN MEMORY
OF THOSE
WHO GAVE THEIR LIVES
FOR THEIR COUNTRY
IN THE WORLD WARS



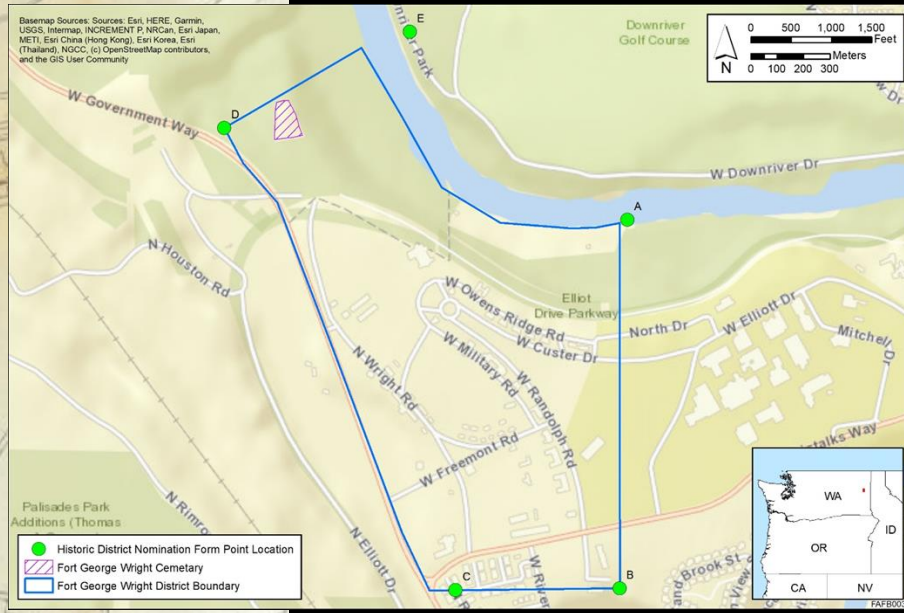


Fort George Wright Hist District Amendment

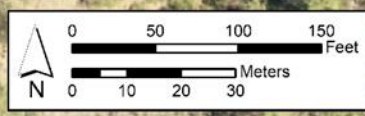




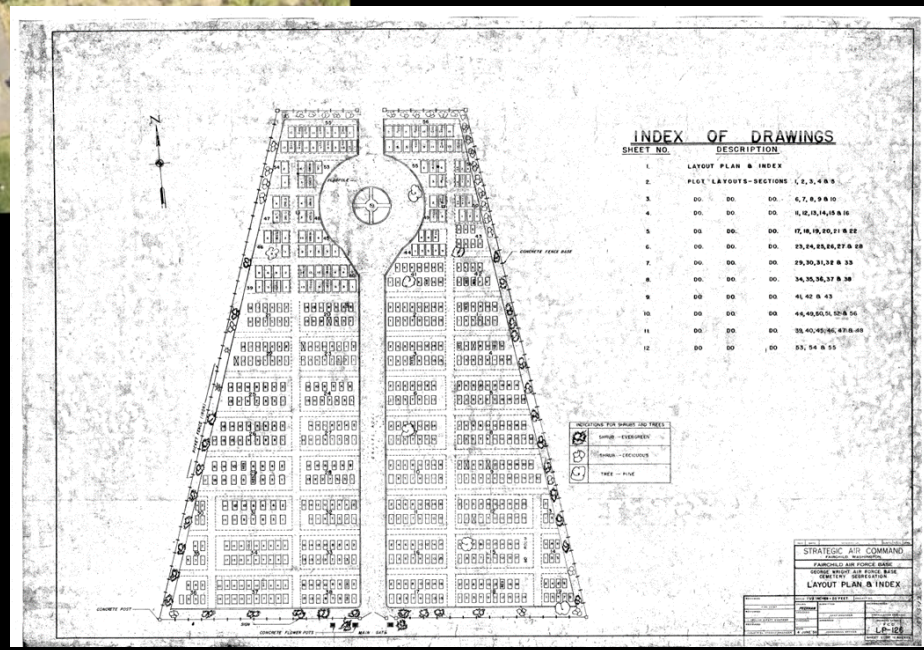
1976 NR Boundary & Resource Ranking



BaseMap Sources: Source: Esri, DigitalGlobe, GeoEye, Earthstar Geographics, CNES/Airbus DS, USDA, USGS, AeroGRID, IGN, and the GIS User Community



Fort George Wright Cemetary
 Fort George Wright District Boundary





A Vista of Sacrifice

"The long gray line never failed us," Gen. Douglas McArthur said in his farewell to the cadets at West Point. As another Memorial Day approaches, one

can fully appreciate the sacrifice of so many served in that long gray line by looking at the headstones at Ft. George Wright military



Historic Fort Wright Cemetery Receives Reprieve From Air Force
Aerial view taken this week shows layout of cemetery, in existence for many years. It contains 645 graves.

Air Force Delays Cemetery Move, Protest Meet Quiet

A U.S. Air Force announcement that consideration is being given to delay moving 645 graves at Ft. George Wright Cemetery reached Spokane Thursday just prior to a protest meeting of the Spokane All-Veterans Council.

As a consequence, what gave promise of being a noisy session turned out to be a quiet discussion of the proposed move.

Seeks Care

A press release from Fairchild Air Force Base Thursday indicated that Air Force officials at Wright-Patterson AFB, Ohio, plan to delay the move indefinitely, apparently yielding to

pressure from survivors of those buried at Ft. Wright.

The press release noted that the Air Force has been trying since 1958 to get an appropriate agency of the city, county or state government to assume perpetual care of the cemetery.

The Air Force "would react favorably to such an offer at this time," the announcement noted.

Those attending the protest meeting, however, felt it would be highly unlikely that the City of Spokane, Spokane County, or the Washington state government would agree to finance future maintenance of the cemetery.

State Rep. William L. McCormack said he would be opposed to a takeover of a military cemetery, but said he would introduce a bill calling for state maintenance, if necessary to prevent removal of the graves.

He advised representatives of all veterans organizations to urge their national headquarters to pass memorials to Congress to oppose movements of any military cemeteries.

Asks Halt

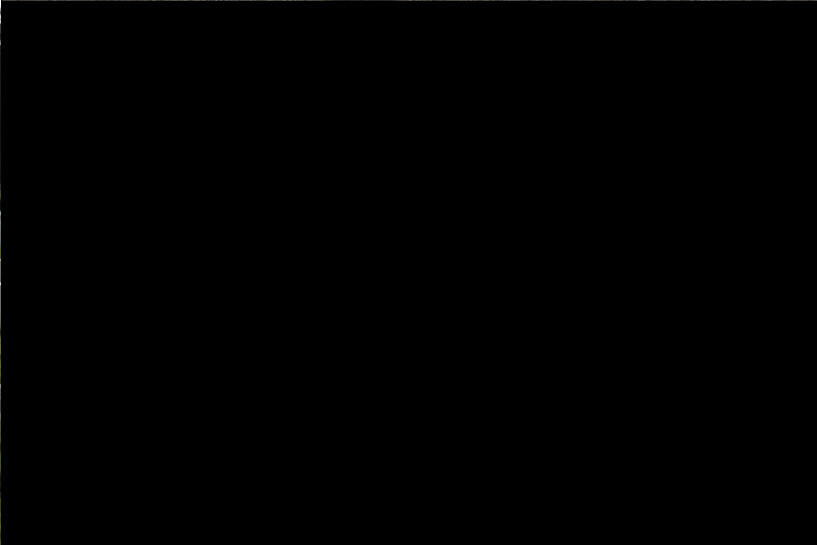
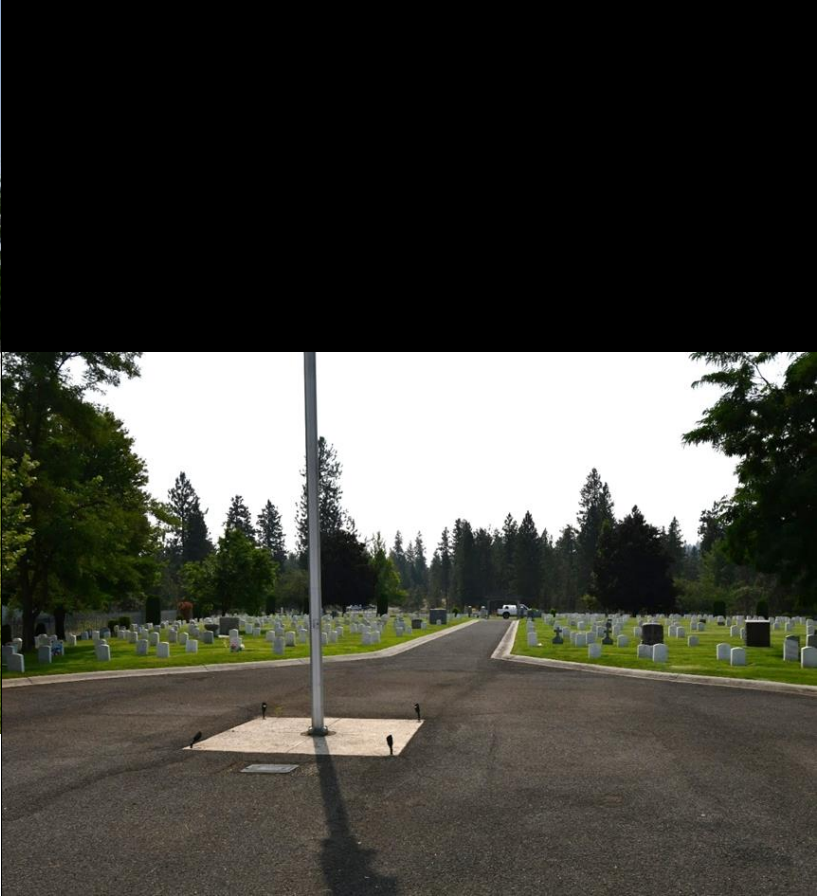
The Air Force announcement Thursday urged the next of kin of those buried at Ft. Wright not to take any further protest action until the situation is resolved.

Thomas S. Foley, Democratic candidate for Congress from the 5th District, said he agreed that appropriate action is being taken by Congressional authorities in Washington and that further protests from Spokane would be fruitless.

Thomas Holley, administrative assistant to Rep. Walt Horan, said the latter has been "very upset" about the manner in which the Air Force notified next of kin of the proposed move.

Spokane Chronicle – May 20, 1975

Spokesman Review – August 28, 1964

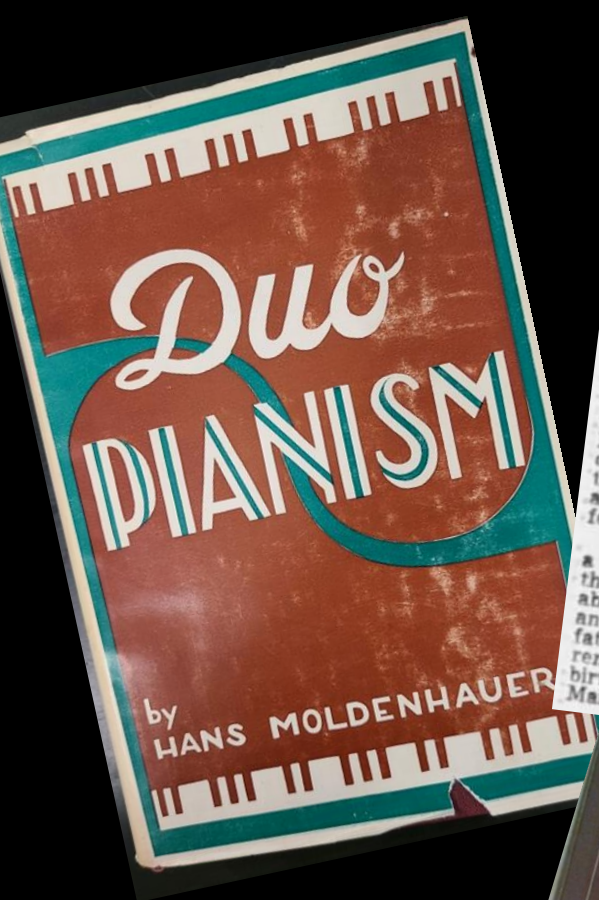




Dr. Hans & Rosaleen Moldenhauer House





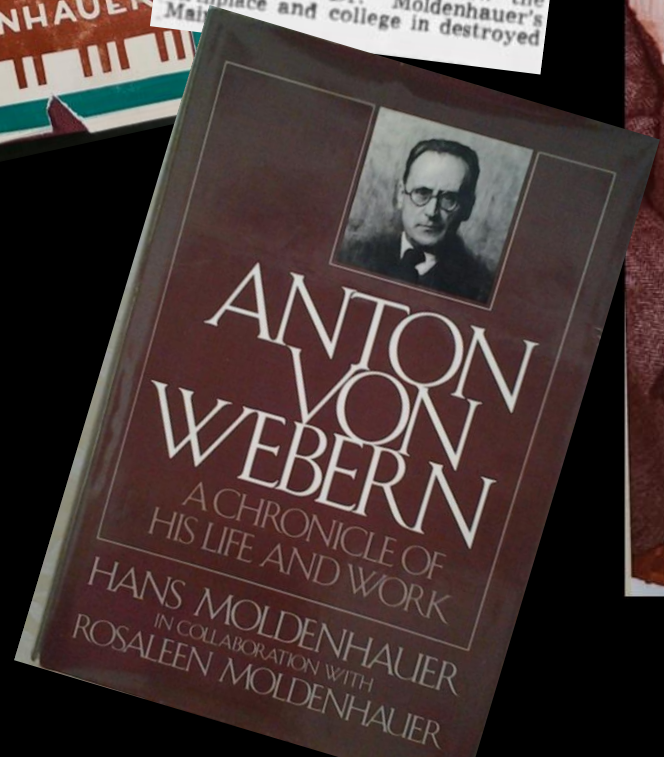


Couple Visits Ten Nations

Dr. and Mrs. Hans Moldenhauer, 8808 Lincoln, visited 10 European countries on their recent two-month tour. They attended music festivals from Glyndebourne, England, to Aix-en-Provence, France, seeing and hearing over 40 concerts, operas, ballets and plays. Dr. Moldenhauer was press representative of Music News syndicate.

One of the high lights of the trip for Dr. Moldenhauer was seeing his former teacher, Hans Rosbaud, musical director of the Aix-en-Provence festival. Another was receiving honorary membership in the International Cultural center at Amsterdam during the Holland festival.

The Moldenhauers brought back a 15th century wooden statue of the French Bourgogne school and about 100 old engravings, prints and etchings. They visited his father in Frankfort and saw the remains of Dr. Moldenhauer's birthplace and college in destroyed Mainz.





Spokane Conservatory
 Founded 1942. Chartered 1946.
 Dr. Hans Moldenhauer, Director.
 A Complete School of Music and Allied Arts.
 Private Lessons and Class Instruction.
 Preparatory—Collegiate
 Special Students' Certificates, Diplomas, Degrees.
 PHONE RIV. 3868.

Two-Piano Recital

A two-piano recital was presented by Hans and Rosaleen Moldenhauer at the Spokane conservatory yesterday afternoon. The Moldenhauers, who recently returned to Spokane, received acclaim for their two-piano playing in localities in and around Denver, Colo., while Mr. Moldenhauer was stationed with the mountain troops at Camp Hale.



MUSICAL DIRECTORY 96
 HANS MOLDENHAUER RETURNED—AD-
 ditional piano students accepted now.
 Theory and appreciation classes. Spo-
 kane Conservatory, S808 Lincoln. Riv.
 8285.

Projects by Builder George M. Baker

Bungalows with similar gable details as Moldenhauer House.



Source: Google maps, 1111 W. 13th Avenue - 1919



Source: Google maps, 2625 Grand Blvd - 1920



Source: Google maps, 928 W. 18th Avenue -1916



Source: Google maps, 804 W. 25th Avenue -1917



Source: Google maps, S. 2518 Grand Blvd -1919



Source: Google maps, 2224 S Lincoln Street -1918

BAKER TO BUILD \$4000 BUNGALOW ON SOUTH HILL

On property recently purchased at S2518 Grand boulevard, George M. Baker will soon start the construction of a \$4000 home.

Mr. Baker is a building contractor and now resides at S808 Lincoln street. The new home to be built for the Baker family will be a five-room bungalow with sleeping porch.

Spokane Chronicle –
March 25, 1919

INVESTS \$8000 IN BUNGALOW W. I. Fraser of Missoula, Mont., Buys Home in Spokane.

A nine-room bungalow was sold last week for a reported price of \$8000 by George M. Baker to W. I. Fraser of Missoula, Mont., general superintendent of the Central Union Life Insurance company in Montana, Idaho and Washington. The property is situated at S808 Lincoln.

The house has many built-in features, electric kitchen appliances, hot water heat and a billiard room, a tea-room, a laundry and a garage in the basement. Mr. Fraser will take possession August 1.

Mr. Baker is now building a bungalow on Twenty-sixth and Grand, with sleeping balcony.

Spokane Chronicle –
June 22, 1919









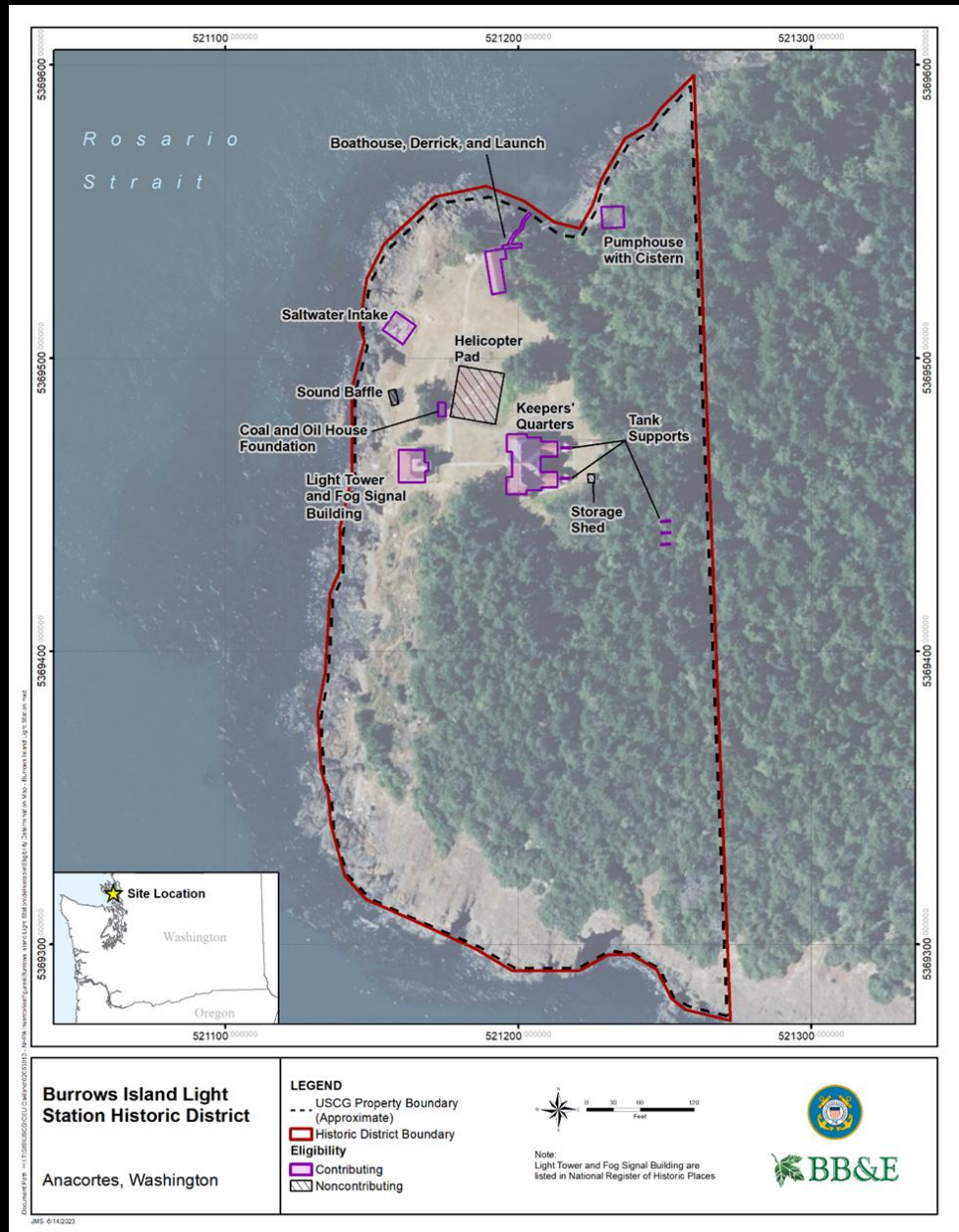
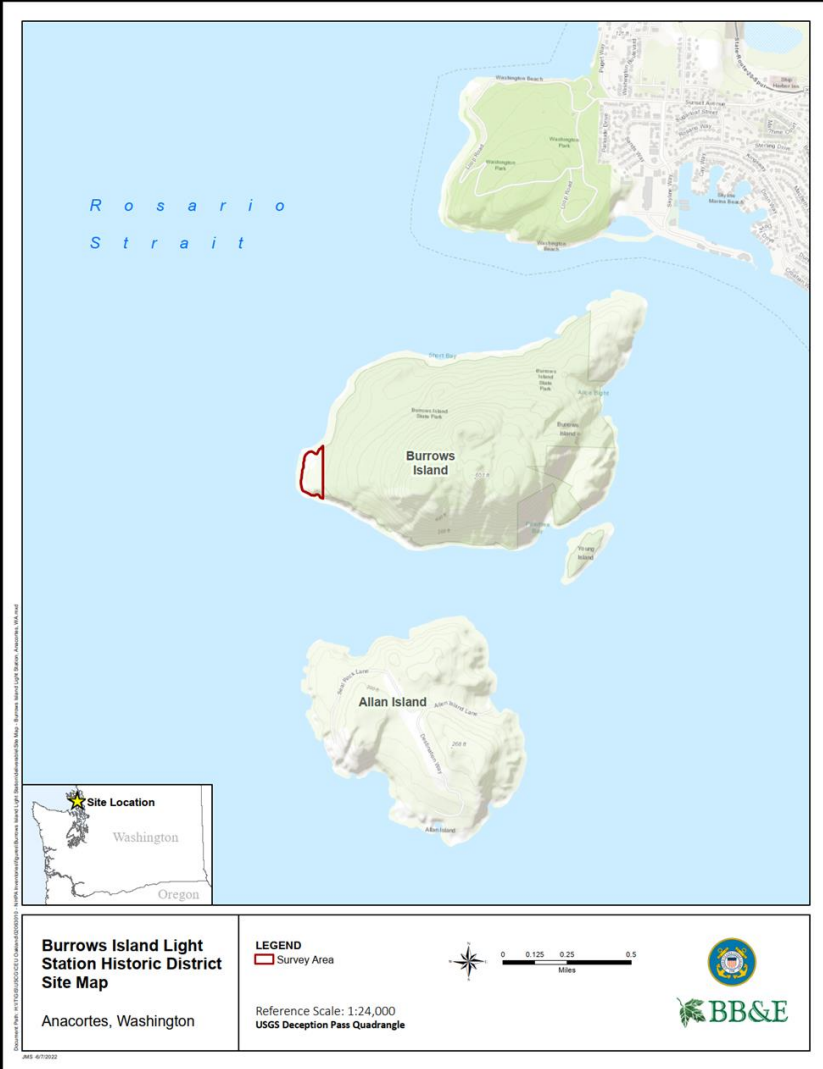






Burrows Island Light Station

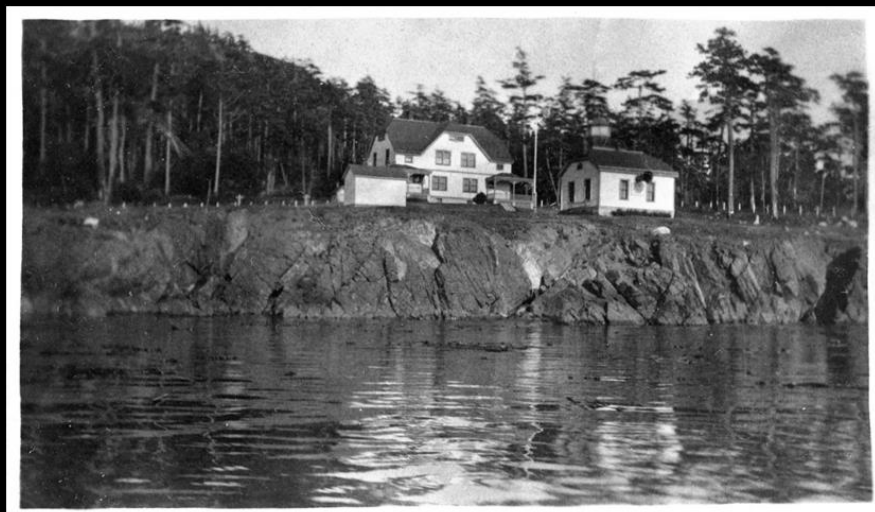


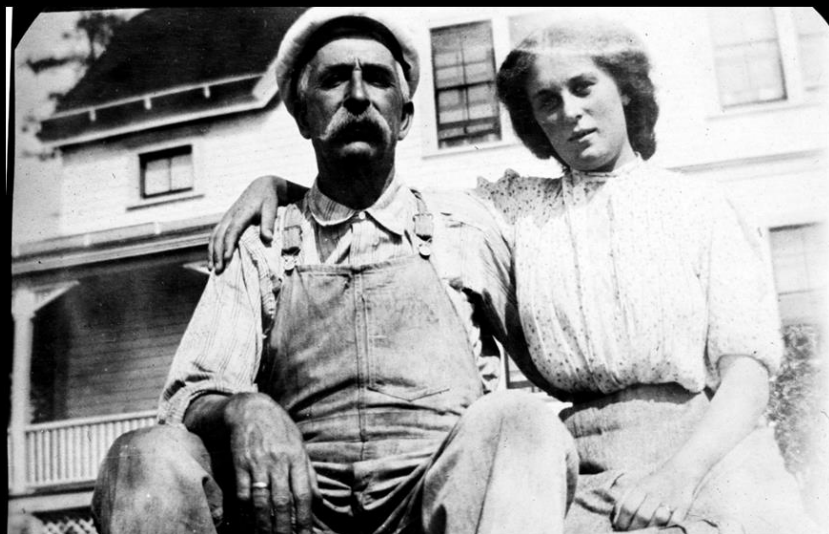
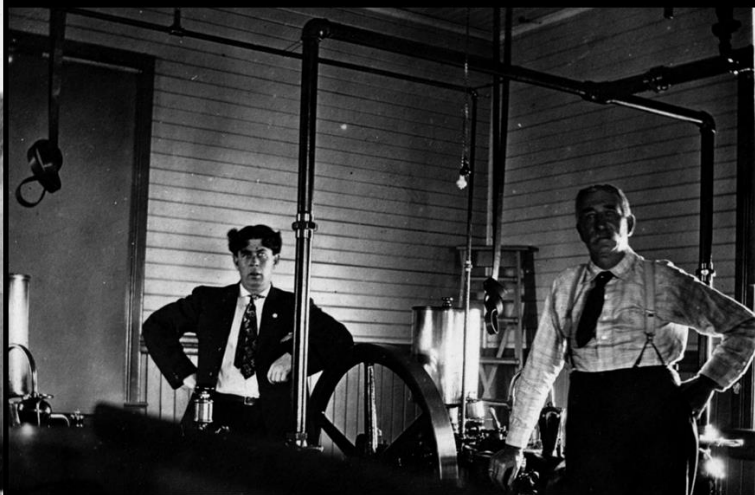


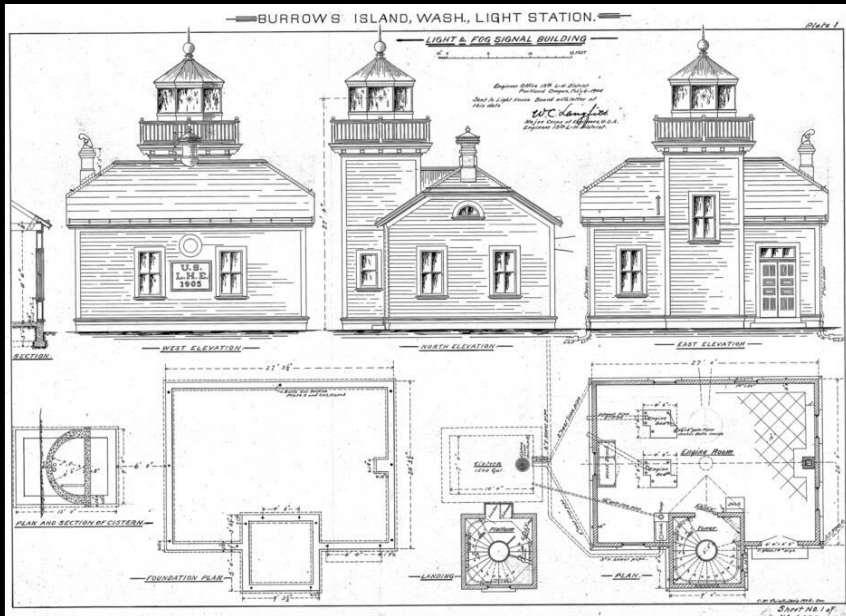




Home Runway Island Light House, Clatsop Co. Wash.



















Continental Hotel







Stephen Berg
(Developer & Builder)



Claremont Hotel - 1926



Bergonian Hotel - 1927



Continental Hotel - 1926

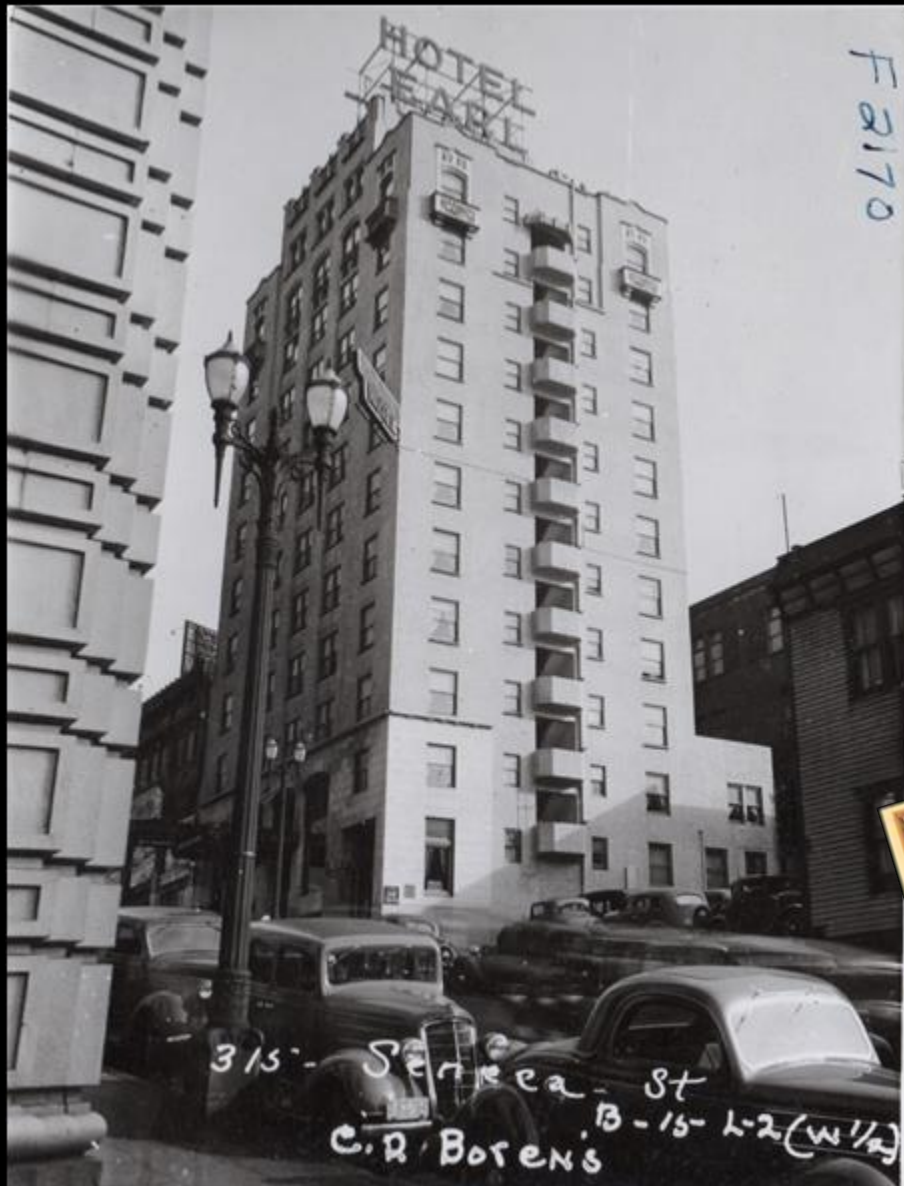


STUART AND WHEATLEY
ARCHITECTS
AND ENGINEERS

428-31 Walker Bldg.
Seattle

Phone ELLIott 7410





From the Corporation of the Hotel Earl
 88 142-17
 FOR RESERVATION USE ONLY

LOCATION

Here in Seattle's far famed metropolitan center is a hotel that meets every demand of tourist, business man or family party. The new modern building in itself provides every modern hotel comfort. When you come to Seattle, come to the HOTEL EARL... you will be delighted. The hotel commands an excellent view of the downtown district; snow-capped Mount Rainier; the Olympic Mountains and Elliott Bay, Seattle's port to all corners of the world, Seneca Street at Fourth Avenue, highway 99. The HOTEL EARL is in the metropolitan circle of leading theatres, department stores, smart shops, financial and business districts.

THE LOBBY

First entering the Lobby, the potential resident at the HOTEL EARL is agreeably impressed by the atmosphere of conservative charm. Deep-cushioned arm-chairs, roomy lounges and subdued lights combine a spirit of restful quiet. The Lobby presents a highly desirable place to meet one's friends; to sit and gossip; to read or to while away the time in pleasant meditation. For your convenience an excellent Coffee Shop and Barber Shop are located off the main Lobby.

ROOMS

Exactly as you may be in your demands there is a room at the HOTEL EARL that will meet your every requirement. Richly appointed all rooms are outside assuring you the maximum of natural light and air coupled with an excellent view. Equally desirable there is an abundance of hot water no matter the time of day or night.




PERSONNEL

You will find service at the HOTEL EARL not merely a gesture. It is given in infinite detail, but not obtrusively. There is no outward display of it. Members of a highly trained staff attend you the moment you enter the hotel making you feel immediately at home. It is a personal touch and is expressive of the HOTEL EARL atmosphere.

INFORMATION

For the convenience of out-of-town visitors a complete information bureau is maintained at the desk. Unfamiliar with the city, correct information on points of interest and how to reach them will be given you on request.

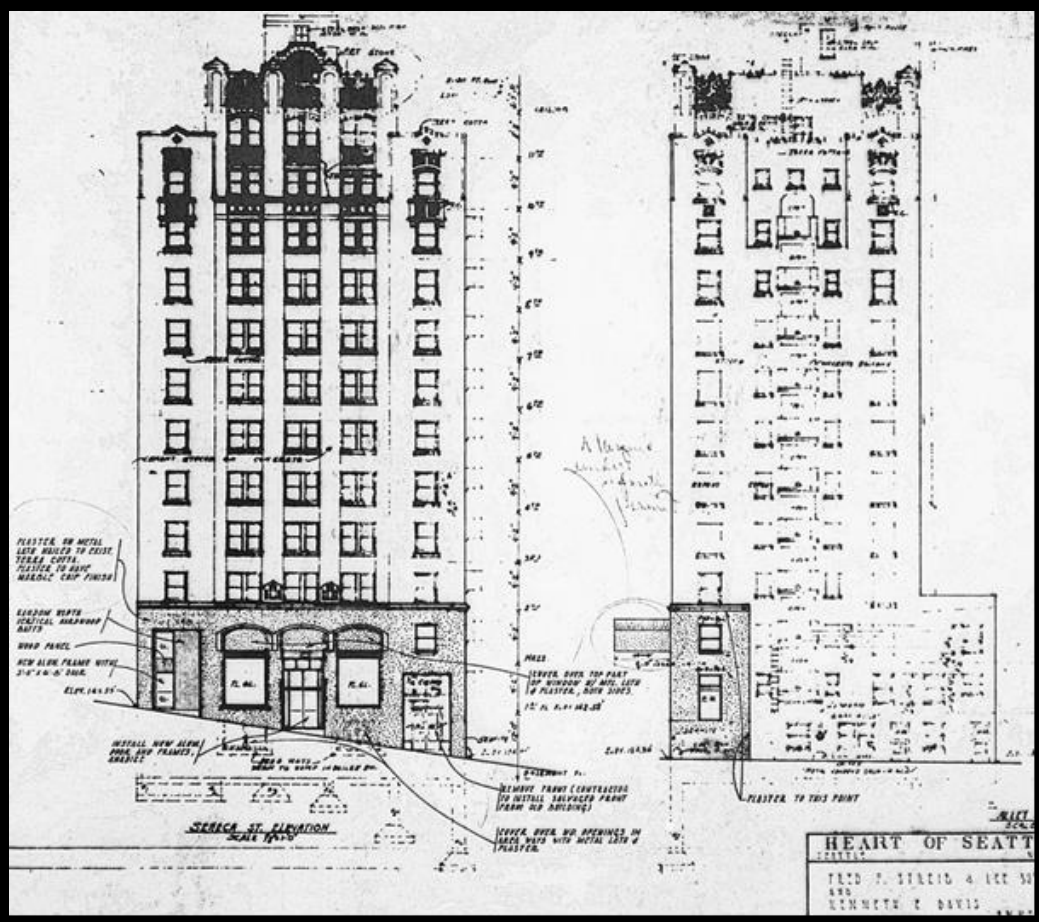
ALL OUTSIDE ROOMS WITH BATH, Rates as LOW as
\$1.50 SINGLE (Free Garage) **\$2.00 DOUBLE**

The accompanying views depict the restful Lobby, delightfully appointed rooms and spacious, towering exterior of the HOTEL EARL. For positive assurance of complete comfort and home like atmosphere your problem of hotel selection is solved at the EARL.

**1935
 Rebranding**

1962 Remodel



FACES OF THE CITY— Old-World Charm Marks Bavarian Haus



CHEF HANS MERK AND BAVARIAN APPETIZERS Waitresses LouAnn Cooper, left, and Lois Manley looked on

By JOHN J. REDDIN

While our attention was diverted during recent months to the 74-acre tract that stands in the shadow of the Space Needle, things have been going on around town that apparently need looking into.

Like a middle-aged matron in the midst of a mud-pack, they are digging and tossing dirt in all directions for the downtown section of the freeway. The and familiar landmarks are knocking down buildings lifting—it's major surgery.

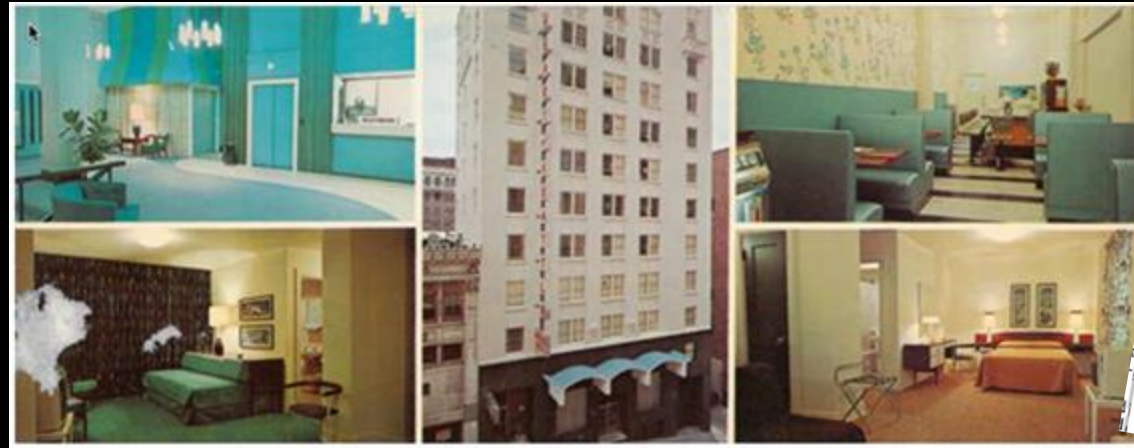
We just hope the engineers and excavation crews know what they are doing. It's a cinch nobody else does.

As cherry pickers and claw machines tear down once-proud old buildings such as the College Club, new office buildings and even bigger apartment houses rise.

Seattle Times
Nov 2,
1962

IT'S THE ever-changing face of the city—a truth brought home to us when we visited the Bavarian Haus, a new and colorful downstairs restaurant that opened last week at 315 Seneca St.

The rathskeller-type Bavarian restaura





Nails & Spa

American **Alterations**
Freestyle

QUEEN BEE
NAILS & SPA
300-555-1900

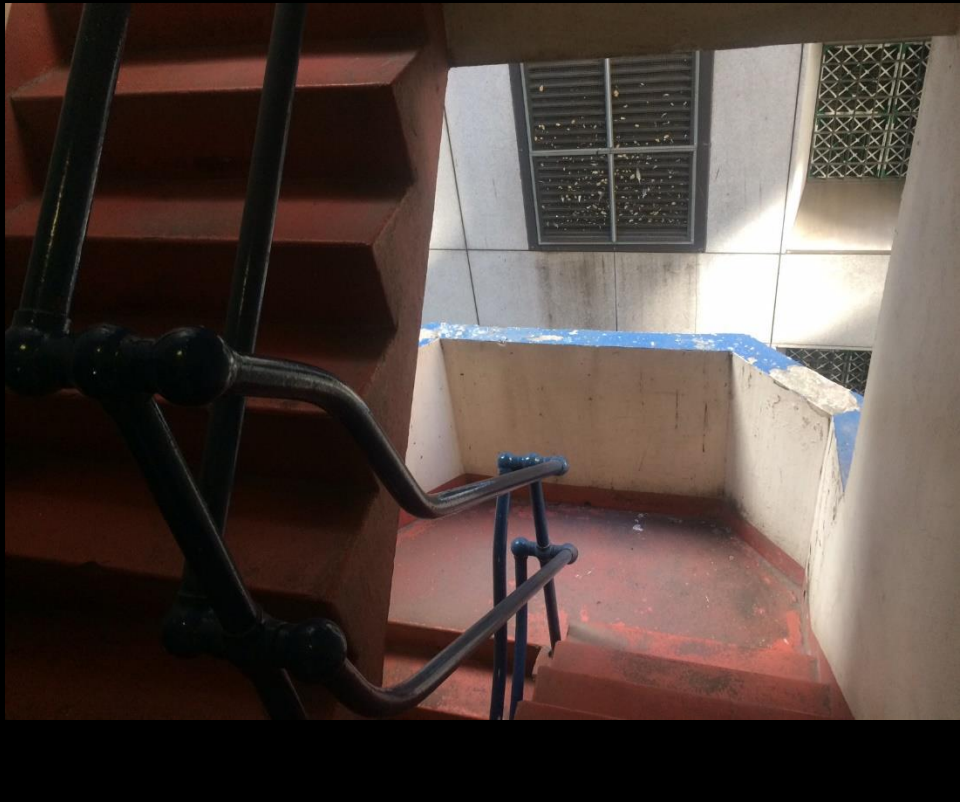
315

ONE WAY

1995





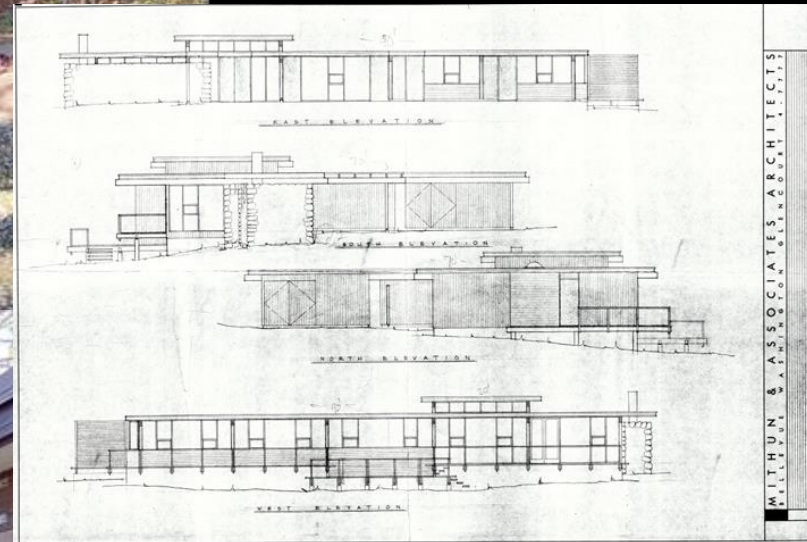






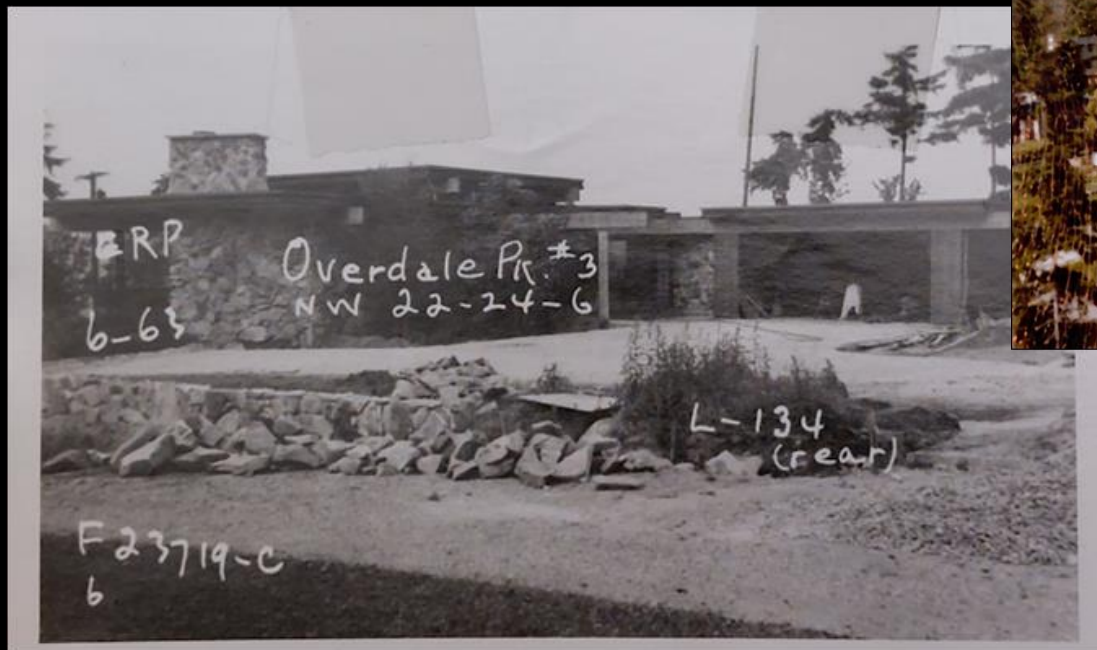
Dr. Johan & Louise Wenberg House





WILLYUNI & ASSOCIATES ARCHITECTS
P.L.L.C.















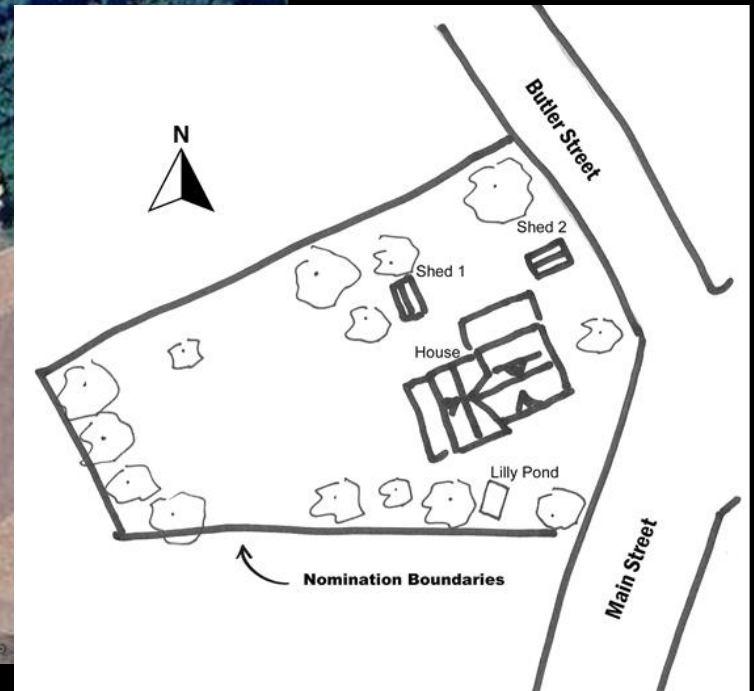
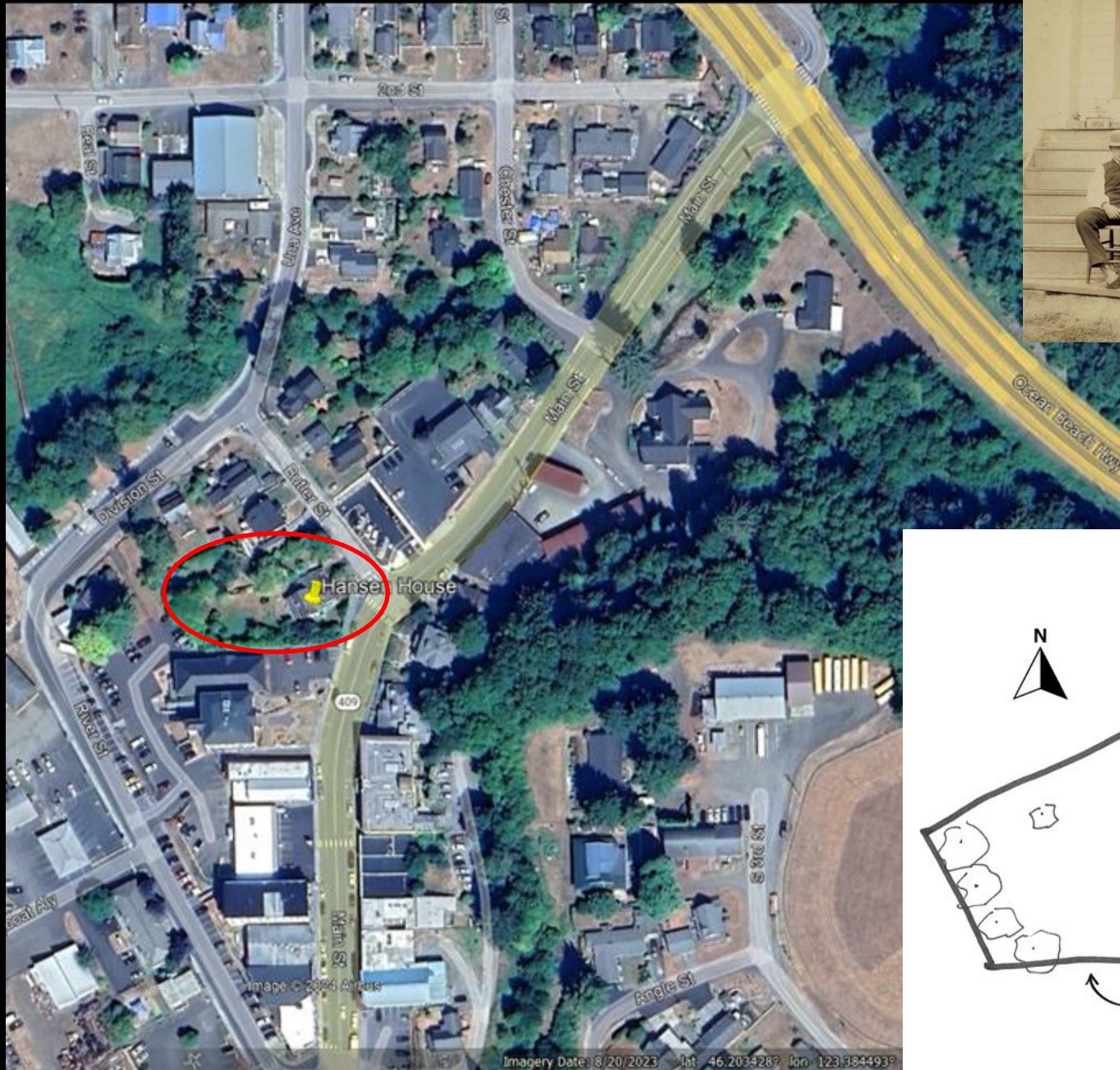


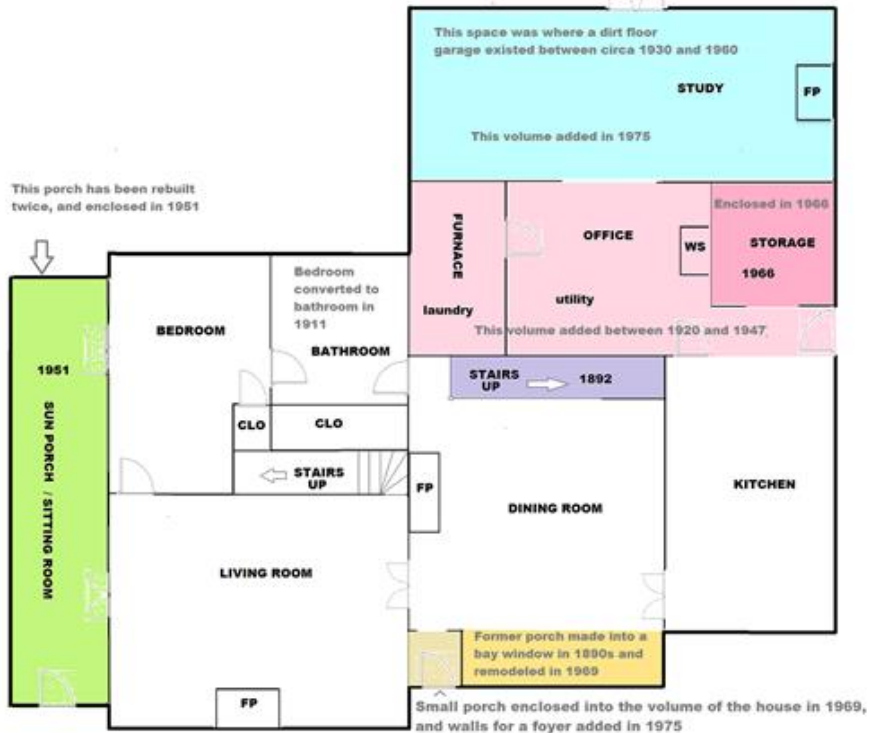




Julia Butler & Henry Hansen House

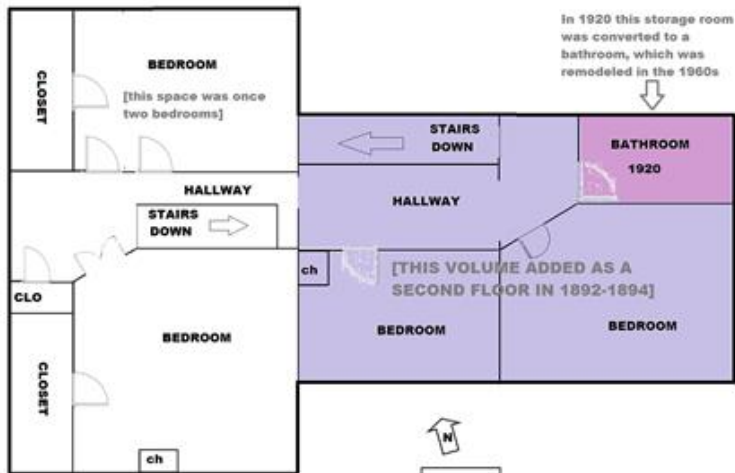






MAIN FLOOR

FACADE



SECOND FLOOR





ELECTION ROUNDUP

Entry of Mrs. Hansen Surprises Democrats

By DWAIN HANSON
 OLYMPIA (UP)—The political climate warmed today as Congressional aspirants moved nearer decisions on whether to make the races.

Activity appeared to be great in the Third and Fourth Districts.

A bomb shell exploded in the Third District during the week-end with the surprise entry of Julia Butler Hansen, Cathlamet Democrat. Most Democrats who had been considering running for the nomination were under the impression that she would be a candidate in the campaign against the Republican incumbent V. Mack of Olympia.

Other names mentioned were those of Democrats Al Coy, Olympia real estate who lost to Mack in 1956 and Simmons, Grays Harbor sheriff.

Simmons was reported a "standby" candidate who would enter only if the race were close.

Rep. Hansen Named To New Committee

State Rep. Julia Butler Hansen of Cathlamet, who is chairman of the 11 western states for the Council of State Governments, has been appointed to a new nationwide committee on interstate reciprocity.

The committee will work on negotiations regarding taxes, sizes, weights and loads of vehicles traveling the highways through various states.

Rep. Hansen Makes Herself Available To Enter Contest

Mrs. Julia Butler Hansen of Cathlamet, veteran state legislator from the Cowitz-Wahkiakum district, today made herself available as a possible Democratic candidate for Congress, from Washington's Third District.

But, she made it clear in a statement on my part if they (the people in the district) choose the latter," she wrote to Graham. Mrs. Hansen recommended to Graham that a meeting of all potential candidates be called. "It might be just if I were not present at your first meeting in order to permit a freer discussion of all aspects of the forthcoming election among all concerned," she wrote. "If there is any resentment toward the idea of my becoming a candidate, I think it should have full expression," she continued. "I would not feel that I would be running over the other candidates. We should enter the campaign with a minimum of such feeling as to be successful."

"If the feeling is that I would be the strongest candidate in this coming election, I would not announce my candidacy," Mrs. Hansen explained. "I do not mean that there should be anything but a wide open primary and a free election, for it is the right of the people to determine their choice for the office."

Women Pickets Close Portland Labor Temple

PORTLAND (AP)—Four women pickets marched in front of the Portland Labor Temple today and closed it down tight. The women are members of the smartly dressed, well-groomed Portland Labor Temple. They refused to sign a union contract with them. The carpenters' locals to sign a union contract with them. The carpenters' locals to sign a union contract with them.

Mrs. Hansen Named To Democratic Post

SEATTLE (AP)— State Rep. Julia Butler Hansen (D-Cathlamet) Wednesday was appointed chairman of the platform resolutions committee of the Democratic party's state opening in Yakima.



PRE-HEARING CONFERENCE — Rep. Julia Butler Hansen and Sen. Nat Vington, chairman of their respective highway committees, confer prior to last night joint session on cross-sound transportation problems held in the house chamber Olympia. In background is former Sen. Francis Pearson, chairman of the service commission, and at right is Cleve Bard, Vashon island bridge proponent.

1,000 JAM BRIDGE HEARING

who were introduced by Rogers, Bremerton Commerce legislative E. M. Weston, pre-estate labor council; (ton) author of the alternate plan considered last night and mentioned senate highways commission part of the



"HAVE COFFEE WITH JULIA"

Meet JULIA BUTLER HANSEN

Democratic Candidate for Congress
 Hear her program — ask questions

4:00 to 8:00 P.M., Aug. 24th

P.U.D. Auditorium

Be our guest.

Julia Butler Hansen for Congress Club, D. Elwood Caples, Treasurer



















Washington State
**GOVERNOR'S
ADVISORY COUNCIL
ON HISTORIC
PRESERVATION**

180th Meeting – Zoom

