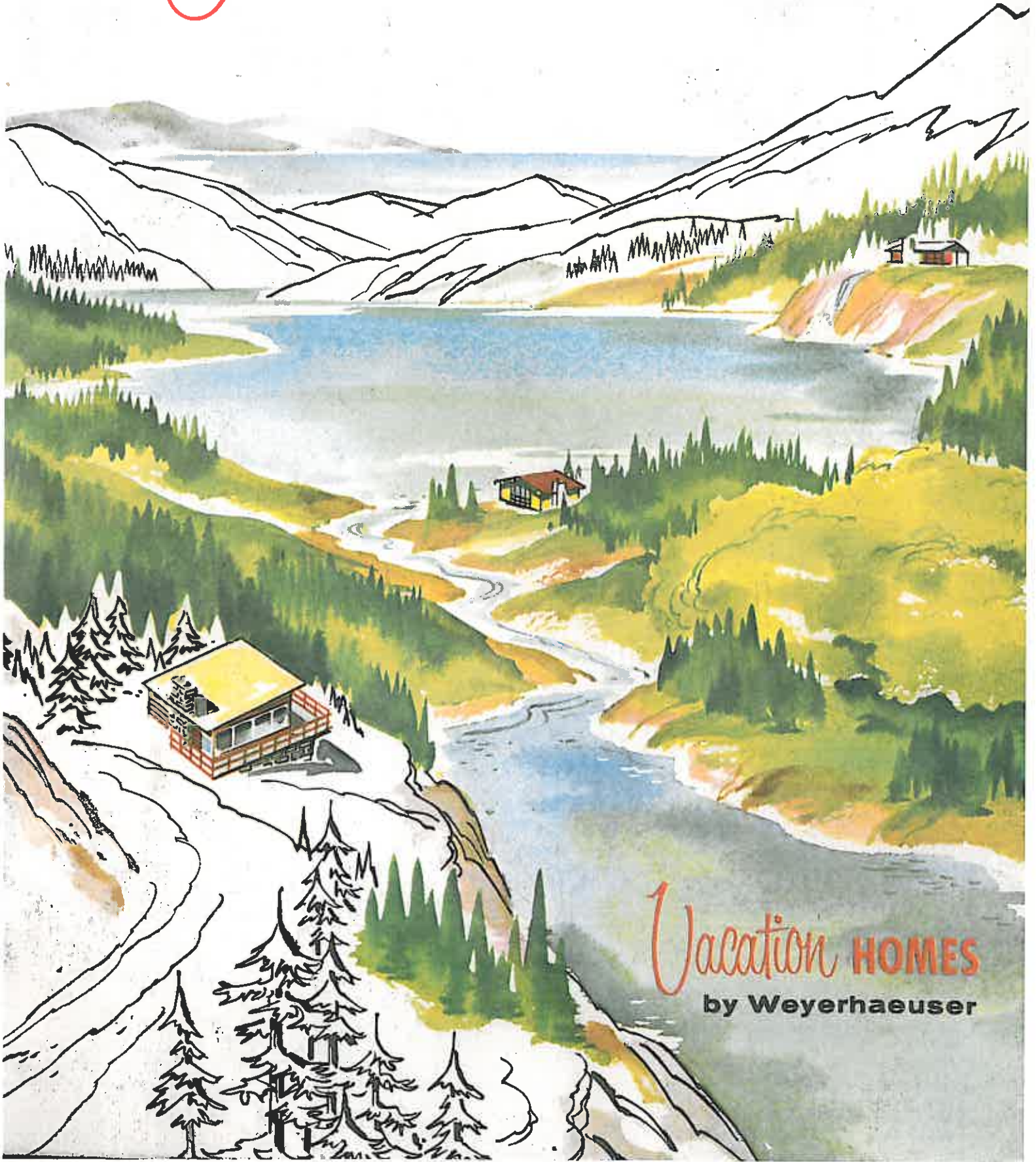


# *Gracious* **OUTDOOR LIVING**



*Vacation* **HOMES**  
by Weyerhaeuser



**your guide to a professionally planned**

# Vacation HOME

**A** vacation home is a sound investment in happiness and pleasant living. It offers you a ready place to get away from the noise of the city . . . to enjoy the beauty and privacy of the outdoors . . . to do a little fishing, hunting or just plain relaxing. For the family it's an opportunity to enjoy those short vacations that are so much fun. The 16 cabins and cottages in this book are professionally designed for the modern family. Beautiful and functional, they afford the maximum in vacation living.

You'll find the open planning features generous window and deck space . . . a smooth interplay between inside and outside. Yet, a large fireplace and extra tight construction keep each structure cozy and comfortable in the chilliest weather. Ample space is provided for kitchen, dining, sleep-

ing and bath. Many designs include provision for expansion.

Open planning makes these homes easy to build, too. Even an amateur can construct nearly any unit shown — with the possible exception of brick-work, wiring, etc. Pier construction eliminates the need for grading the site and laying a foundation.

Best of all, you will find these cabins are economical. They have been designed for low cost construction to bring them within the reach of almost every family.

Your Weyerhaeuser 4-Square Lumber Dealer can furnish you with material lists and blueprints for each of these designs. The material lists cover only the basic structural shell, so that you can plan the interior finishing to suit your own needs and desires.



*Paneling makes the difference...* **FINISH YOUR CABIN IN**

**ONE OF THESE Beautiful Weyerhaeuser 4-SQUARE® PANELING PATTERNS**

To accent the freedom and open spaciousness of your new vacation home, finish the interior with genuine wood paneling. Natural wood paneling brings extra warmth and charm . . . blending your vacation home with the serene loveliness of the forest. Here are just a few panel suggestions; there are many more from which to choose. Weyerhaeuser 4-Square Paneling is recognized by builders everywhere for its fine quality and outstanding beauty.



West Coast Hemlock clear flat grain finish



Knotty Idaho White Pine Plywood natural finish



Knotty Inland Red Cedar Plywood natural finish



Idaho White Pine silver grey stain



Ponderosa Pine No. 3 grey-pink stain



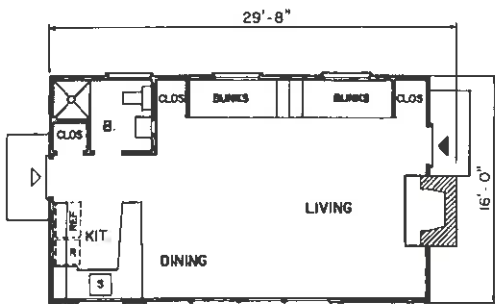
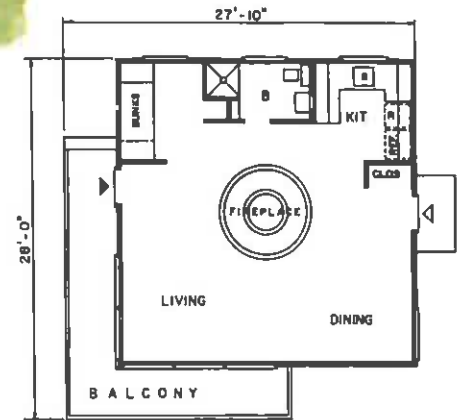
Sterling Idaho White Pine finished with sealer and stain



# THE Rainier

24' x 24' Plus Balcony  
Bunk Space

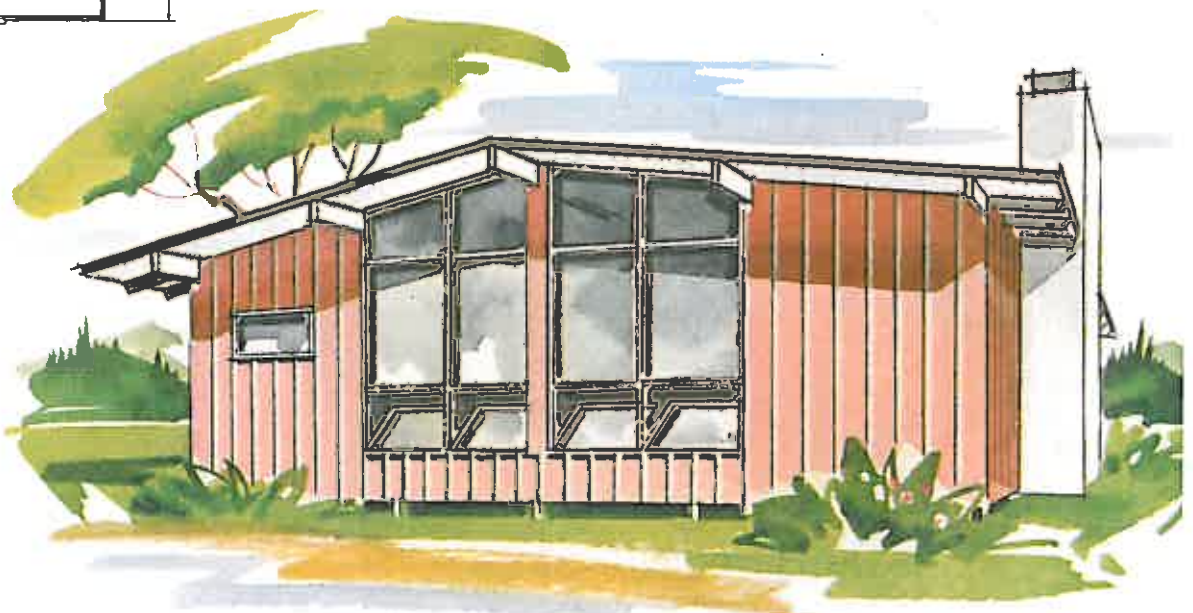
Big picture windows provide a sweeping view from this attractive cabin. The cheery combination living-dining room features a unique circular fireplace with recessed "foot warmer" bench and Swedish hood. Compact, efficiently designed kitchen . . . double-tiered bunk space . . . and bath with shower complete the interior. Outside balcony is perfect for lounging or sunning. Vertical siding and flat roof give distinctive, modern appearance.

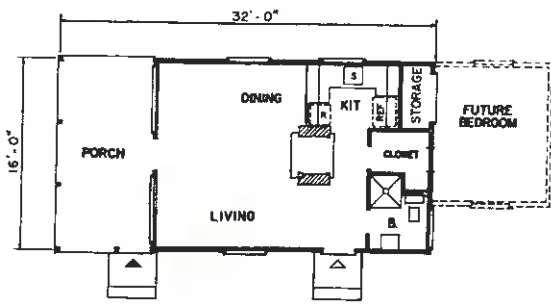


This striking design is open planning at its best. Kitchen, dining, living, and sleeping areas are blended together in one big, spacious room. Lodge-type interior is achieved through use of exposed beam ceiling and big fireplace. Ship's galley kitchen features a snack counter. Bunk space can be screened with drapes. Design includes bath with shower. Ample storage space is provided. Exterior is vertical boards and battens. Note big window area.

# THE Berkshire

28' x 16'  
Bunk Space





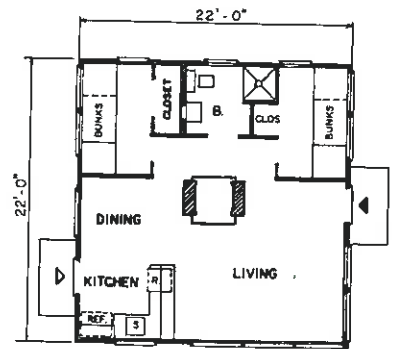
Here is a practical, economical "starter" design that can be easily expanded. A "see-through" fireplace adds warmth to the basic one-room design, and the large porch when screened gives additional living room space. The big closet is planned for use as a hallway if a bedroom is added in the future. Storage for lawn tools, fishing tackle, etc., is provided in a separate room that opens from the outside.

## THE Cumberland

24' x 16' Plus Porch



You can sleep four people easily in this handsome cabin. There are two separate double-tiered bunk rooms with ample closet space. Bath is centrally located. Two-way fireplace and wide expanse of windows give the living-dining area comfort and spaciousness. Compact kitchen simplifies meal preparation. Exterior is finished with horizontal wood siding. This design fits well on almost any type of vacation lot.



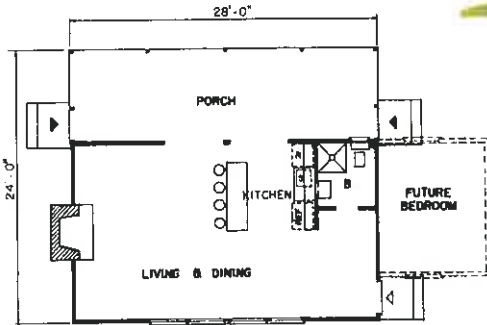
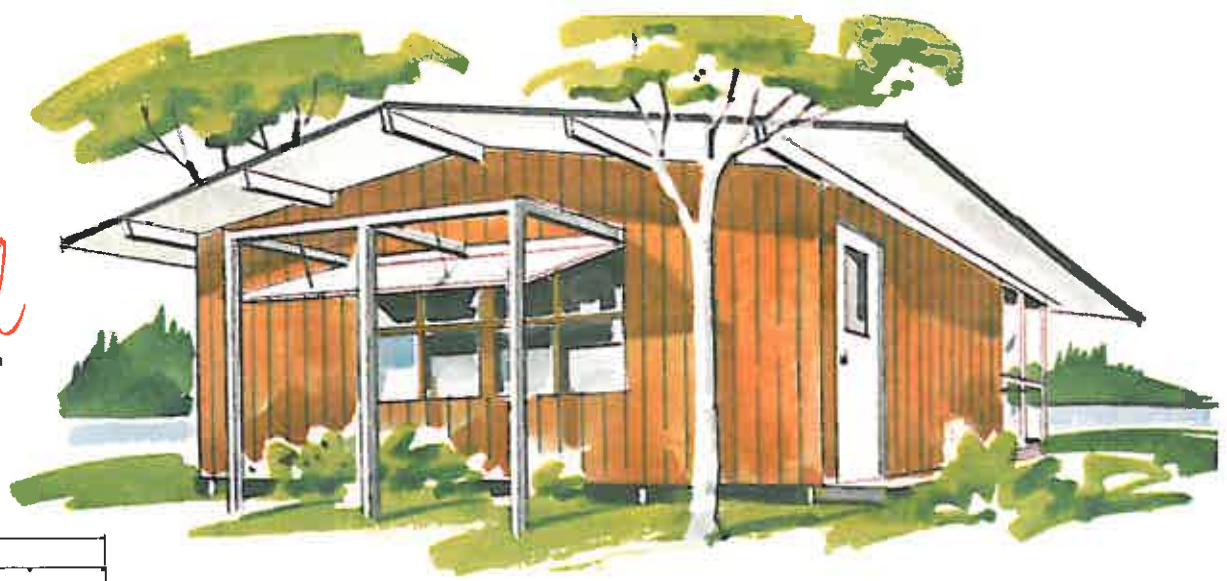
## THE Teton

22' x 22'  
Bunk Space



# THE Catskill

16' x 28' Plus Porch



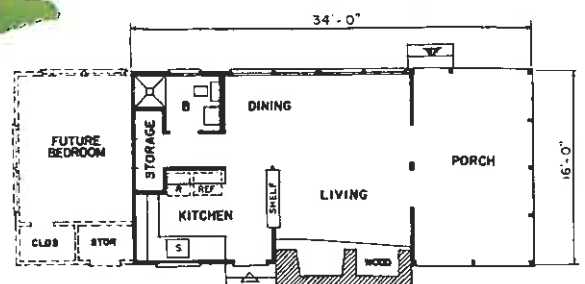
There's a maximum of relaxation and easy living in this design. The basic one-room floor plan is supplemented with a big screened porch—and provisions have been made for adding a bedroom at a future date. There is an efficient corridor-type kitchen with lunch counter eating space. The spacious living-dining area has two large windows with awnings. Vertical wood siding harmonizes with the gable roof.



# THE Sierra

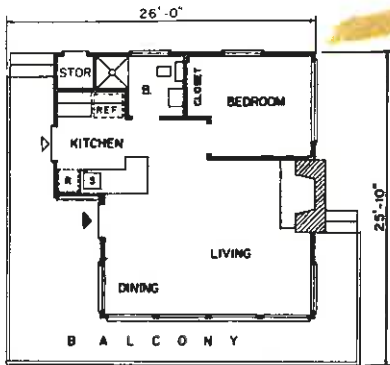
16' x 24' Plus Porch

Lending distinction to the living-dining area in this cabin is a massive fireplace wall which includes a spacious storage compartment. The big porch features floor to roof screening . . . an ideal retreat for summer evenings. Open planning adds spaciousness to the living area, with a space-saving kitchen and a pass-through serving shelf. Future bedroom and storage space can be added easily. Horizontal wood siding is suggested for exterior.



# THE Shasta

22' x 22' Plus Balcony  
One Bedroom



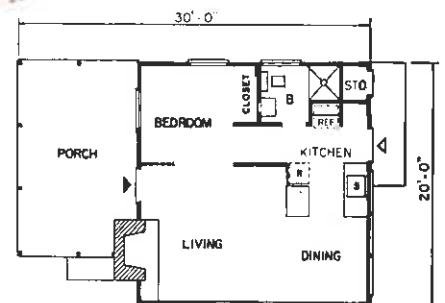
Cliff-hanging is a specialty of this dramatic cabin. Big windows take full advantage of the view—and a wide balcony on three sides of the structure is ideal for day-around sunning—or probing the canyons with binoculars. Inside is the comfortable living-dining area with fireplace, efficient kitchen, bedroom, and bath with shower. The practical shed roof and horizontal wood siding give a pleasing exterior appearance.

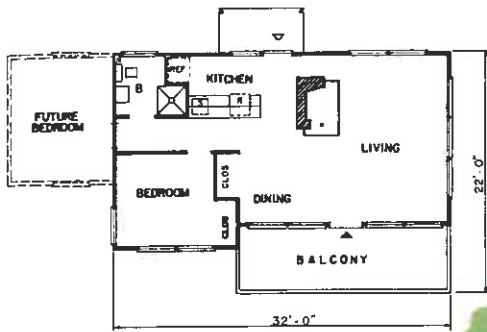


# THE Flambeau

20' x 20' Plus Porch  
One Bedroom

Summer housekeeping is fun in this charming, well designed vacation home. There is an efficient kitchen; a living-dining area with big windows and a fireplace; a bath with shower; and a folding wall that zones off your bedroom. You'll like the screened porch, too. It gives you additional living space for a small investment. It's a cabin you'll love to live in—and be proud to share with your friends.





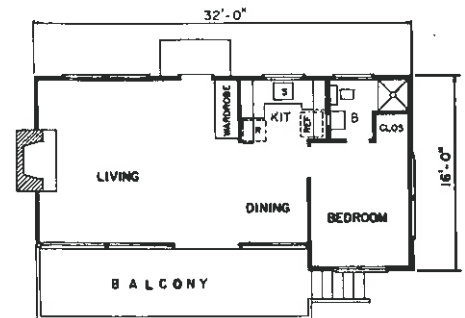
Here is an ideal design for those who prefer high places with sweeping vistas. Big windows give a "control tower" view... the balcony is perfect for out-of-doors lounging or entertaining. Professional planning makes use of every square foot of interior space so that you get a lot of living, with a minimum of housekeeping. Design includes one bedroom, with provisions for future expansion. Board and batten exterior gives snug, trim appearance.

# THE Cimarron

18' x 32' Plus Balcony  
One Bedroom



This smart, modern design features one wall that is almost entirely glassed in. Vertical window units are topped by horizontal fixed glass panes, giving window coverage from floor to ceiling. Open planning inside combines living room, dining room, and kitchen areas. Bath is located off the bedroom. Roof overhang shades windows, provides protection for balcony. Flat roof and horizontal siding give cabin low, clean lines.

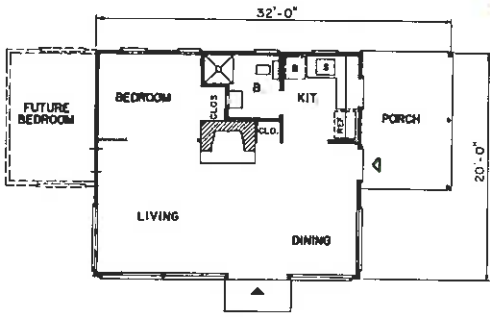


# THE Placid

16' x 32' Plus Balcony  
One Bedroom

# THE Itaseca

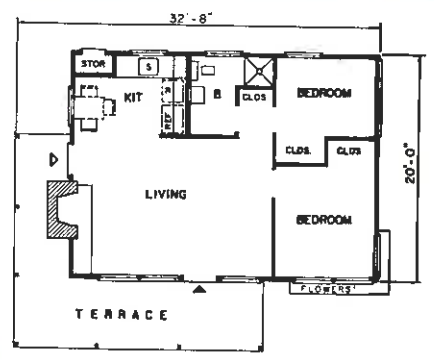
24' x 20' Plus Porch  
One Bedroom



The atmosphere of the north woods is captured in this practical, comfortable cottage design. Fireplace opens into living-dining area, and a wall of windows provides clear view of the outdoors. A folding curtain converts a corner of the living area into a bedroom. Future bedroom can be easily added. The big porch may be screened for extra sleeping or living area. Horizontal wood siding is recommended for the exterior.



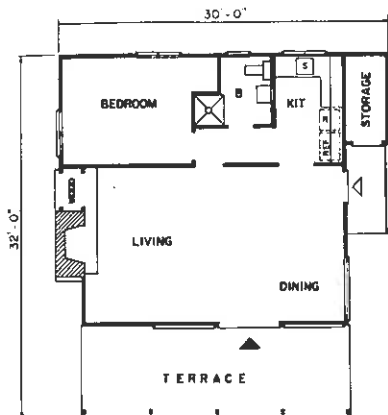
Modern design and professional planning bring you this striking, practical cabin. Living room has dining area, fireplace, and big windows with protective overhang. Design includes two bedrooms with ample storage space, plus a bath with shower. The flat roof over the outside deck offers protection against both sun and sudden rainstorms. The terrace can be easily screened for additional living area. This design is suitable for almost any type of lot.



# THE Potomac

20' x 28' Plus Porch  
Two Bedrooms





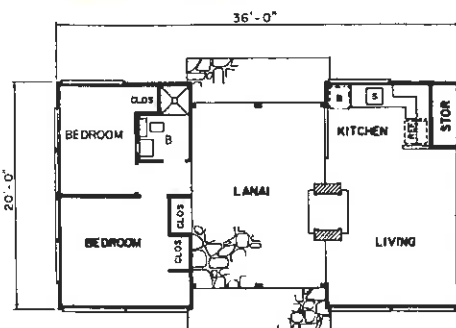
**F**resh as all outdoors is this design for modern living. Enjoy the cool breezes by the lakeside in the beautiful Tahoe this summer. Through tall sliding windows and doors, the large living-dining area opens onto a huge full-length terrace. A big fireplace adds distinction . . . and warmth for those chilly evenings. Note the full-sized bedroom. The large storage space opens from the outside. You can fill the wood hopper from the outside, too.

## THE Tahoe

24' x 30' Plus Terrace  
One Bedroom



**I**f you want luxury living, you will appreciate the design of the graceful new Shenandoah. Between the living area and the two bedrooms waits a lovely lanai with flagstone floor. Wide double doors at either end admit cooling breezes. A two-way fireplace opens to the living area and also permits open-air cooking on the lanai. The bedrooms are separated from the living area for extra quiet. Full kitchen, bath and storage.



## THE Shenandoah

36' x 20'  
Two Bedrooms

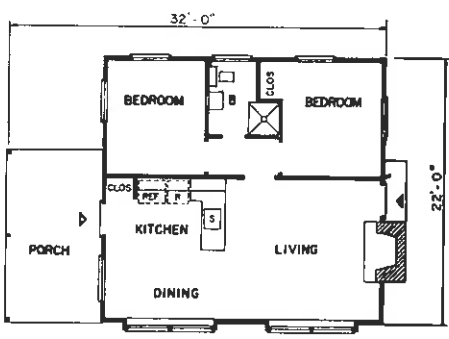
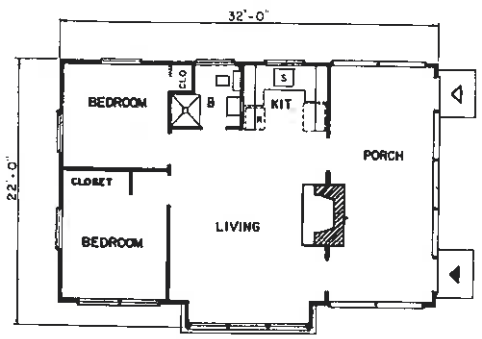




# THE Chelan

22' x 20' Plus Porch  
Two Bedrooms

Here's the ideal vacation home for the growing family. Big and airy, it has two bedrooms, a full kitchen and plenty of living space. A 9' x 20' screened-in porch provides lounging and entertaining room for those enjoyable summer evenings. Another feature is the inviting fireplace. Tall French bay windows provide extra light at one end of the living room, and also permit expansion should another bedroom be desired. Economical horizontal wood siding with stone veneer is suggested for the exterior.



Careful planning of open spaces and sleeping areas adds a cozy quality to the Ozark. It has a gabled roof with overhanging eaves and a large porch for convenience and relaxation. The large living area is divided into a full kitchen, dinette, and living room with a fireplace. Big bay windows cover nearly the whole length of the living area. A full wall closes off the bedrooms and bath from the rest of the cabin.

# THE Ozark

22' x 24' Plus Porch  
Two Bedrooms



**HORIZONTAL**

Weyerhaeuser **4-SQUARE®**

# Wood Siding



Wood is the best siding material you can use on your vacation home. It adds natural beauty that blends with the outdoor setting. Wood siding resists time and weather, and it offers efficient insulating qualities.

For generations, Weyerhaeuser has led the development and production of outstanding wood siding materials. Weyerhaeuser 4-Square Siding has been carefully processed and handled from forest to customer. It has been precision manufactured, scientifically seasoned, accurately graded and carefully handled to prevent damage to the finished product.

A major contribution to 4-Square quality is Weyerhaeuser's kiln-drying process. This special factory seasoning increases dimensional stability and durability . . . prepares the wood to take and hold finishes effectively.

Weyerhaeuser 4-Square Sidings are also available with water-repellent treatment which sheds water and minimizes moisture from collecting behind the siding. In addition it enhances paint performance. . . makes paint easier to apply, keeps paint oil closer to the surface where it should be.

There is a wide variety of outstanding 4-Square wood sidings available for your vacation home. The accompanying examples show some popular types, and there are many more in the Weyerhaeuser line.

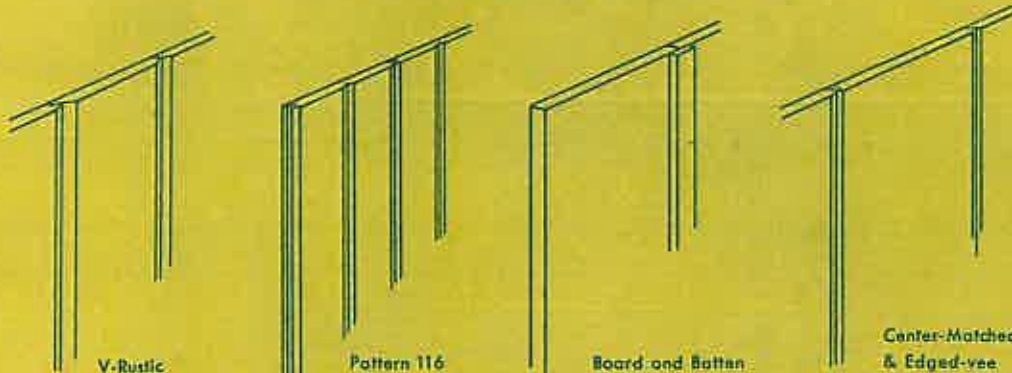
So, for beauty, dependability, and widest choice of styles, be sure to finish your vacation home with wood siding . . . and be sure it's Weyerhaeuser 4-Square. Ask your dealer about it.



**Weyerhaeuser Company**

Lumber and Plywood Division  
Tacoma 1, Washington

**VERTICAL**

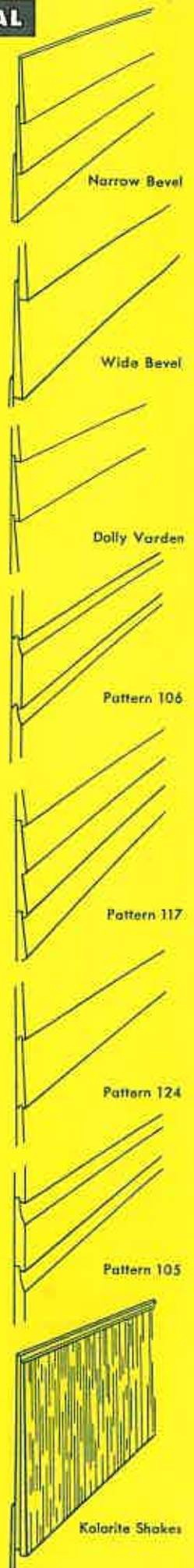


V-Rustic

Pattern 116

Board and Batten

Center-Matched & Edged-vee



Narrow Bevel

Wide Bevel

Dolly Varden

Pattern 106

Pattern 117

Pattern 124

Pattern 105

Kolorite Shakes



Paneling your cabin is easy when you use one of the beautiful patterns of the new Weyerhaeuser LOC-WALL shown on this page. LOC-WALL comes in big 32" pre-assembled, machine-sanded panels with furring strips already attached. It goes on fast. Ask your Weyerhaeuser 4-Square Lumber Dealer for full details.

