

HELPING TODAY'S
HOME BUILDERS

Get their Money's Worth
WITH THE

WEYERHAEUSER 4-SQUARE

HOME BUILDING SERVICE

HELPING TODAY'S
HOME BUILDERS

Get their Money's Worth

. . . Home planning can be a thrilling adventure in selecting features of enduring worth which will yield rich dividends in a sound, durable, beautiful home for those you love.

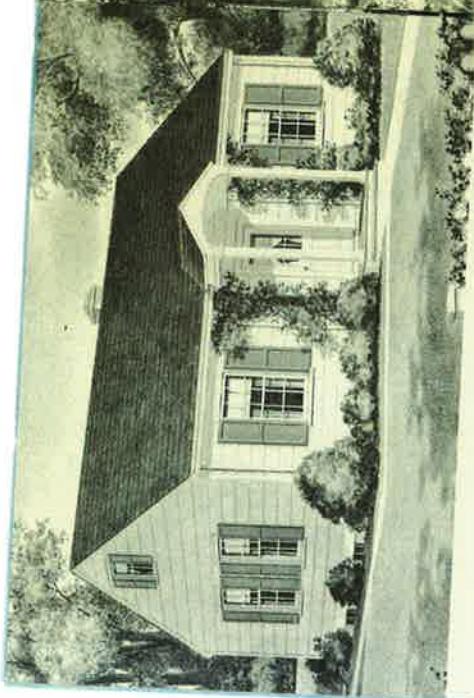
Building the family home is a most important family project—because the home establishes the background of family life and its place in the community.

Because it represents a large investment, you are entitled to a home that satisfies definite requirements of lasting satisfaction and convenience. It must be a Truly Modern Home.

To help you secure such a home

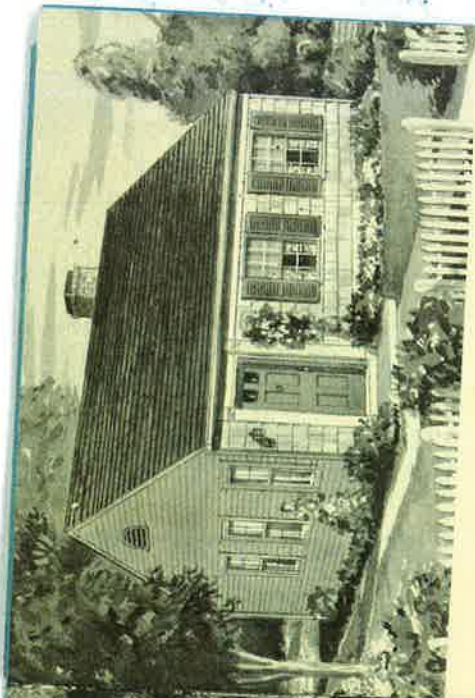
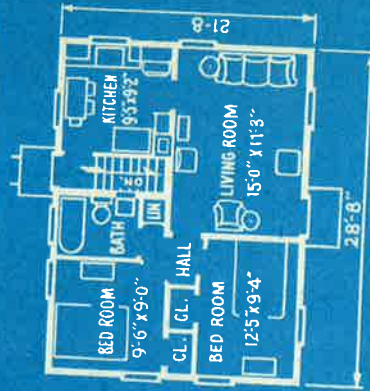
for your family, the Weyerhaeuser 4-Square Home Building Service was created. Prominent architects and engineers were consulted. Specialists in heating, ventilating, lighting, and plumbing conferred with home economists and manufacturers of equipment needed in the modern home. All contributed the benefits of their experience and knowledge toward making the homes in this Service ideally suited to modern, economical living.

This little booklet gives only a glimpse of the benefits to be gained by studying the details of all the designs in the large, colorful Master Book at the office of your 4-Square Lumber Dealer.



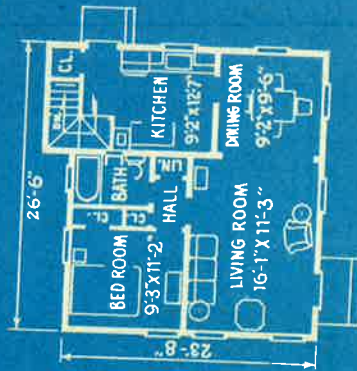
PLAN 41-A
FOUR ROOMS—ONE STORY
12,515 CUBIC FEET

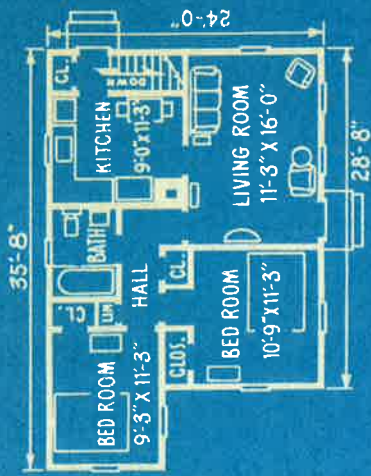
In this small home you witness an exhibit of true artistry on the part of an able designer. Because a home is small, it need not sacrifice its right to beauty, comfort, convenience, and economy.



PLAN 41-B
FOUR ROOMS—ONE STORY
13,533 CUBIC FEET

A good front is an important feature of any house, but this home in addition to fine appearance, has many other values resulting from good planning, wise construction, and correct use of materials.

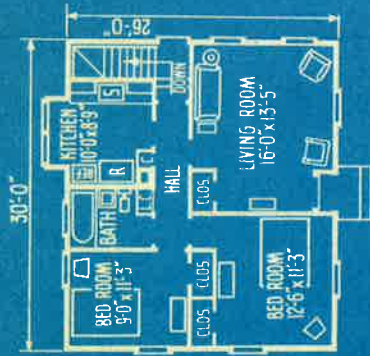
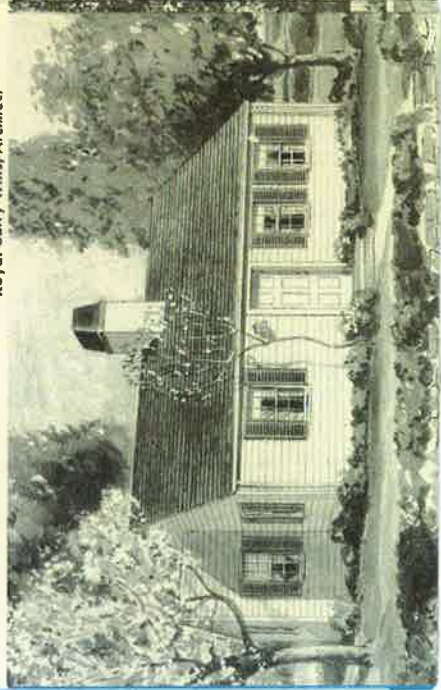




PLAN 41-C
FOUR ROOMS—ONE STORY
14,343 CUBIC FEET

New England Colonial from the tip of its chimney to the authentic shed roof line at the rear of the wing, this compact small home provides the charm and comfort associated with the best of good living.

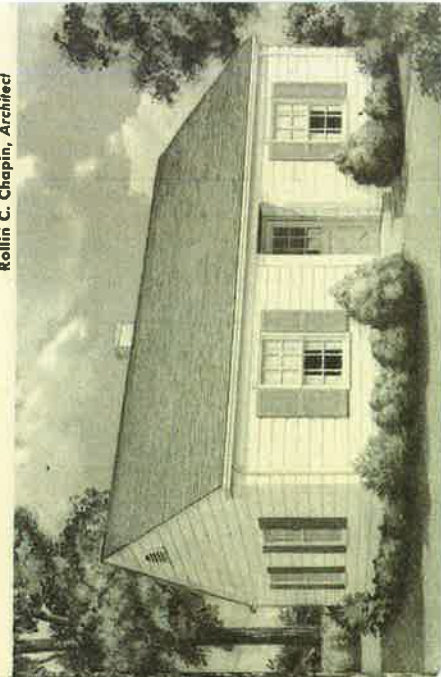
Royal Barry Willis, Architect



PLAN 41-D
FOUR ROOMS—ONE STORY
16,226 CUBIC FEET

Mr. Chapin has created a house of dignity and warmth, adapted to the demands of modern comfortable living. Its simplicity is the result of skilled planning.

Rollin C. Chapin, Architect

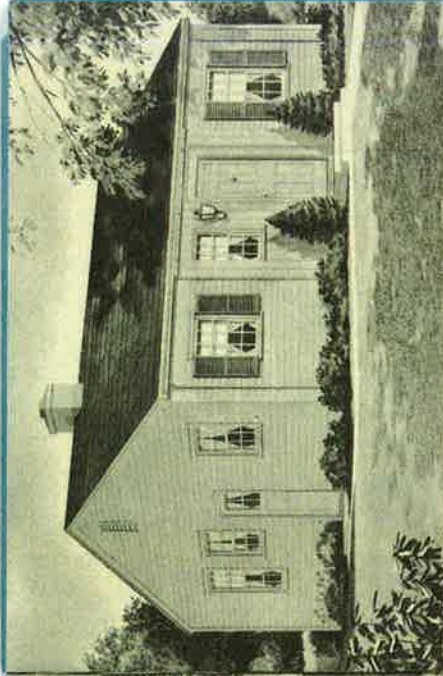
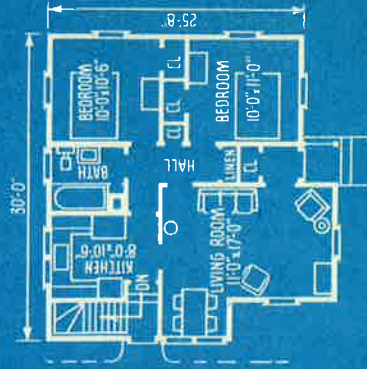




PLAN 41-E
FOUR ROOMS—ONE STORY
15,278 CUBIC FEET

The covered entrance, guest clothes closet, dining alcove, and U-shaped kitchen are but a few of the attractive and practical features of this popular small home.

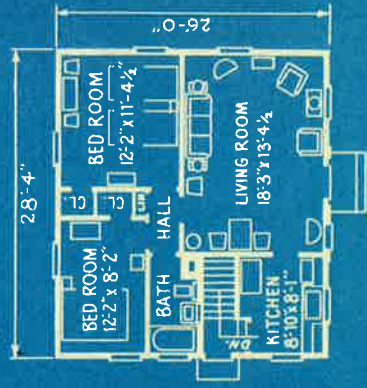
Rollin C. Chapin, Architect

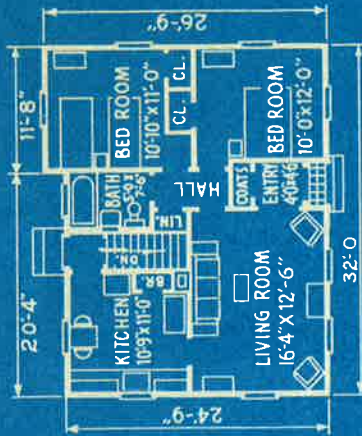


PLAN 41-G
FOUR ROOMS—ONE STORY
14,716 CUBIC FEET

This compact small home is planned for maximum comfort. Desired quiet is achieved in the sleeping quarters by placing the bedrooms at the rear of the house.

F. M. Overby, Architect

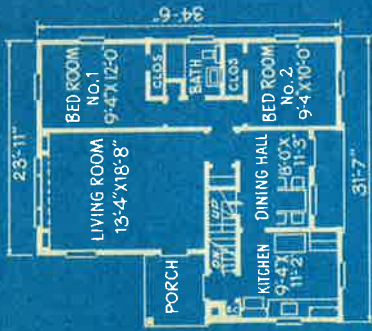
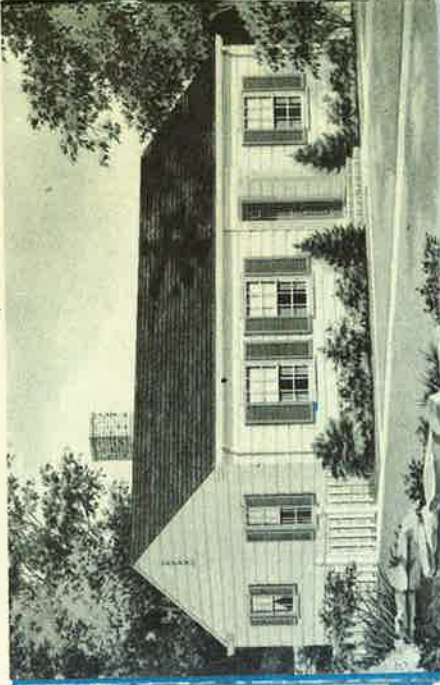




PLAN 41-H
FOUR ROOMS—ONE STORY
16,281 CUBIC FEET

The recessed doorway and generous guest closet off the entry add a hospitable touch to this small home. Good window placement and ample wall areas make the decorating of the living room a delightful task.

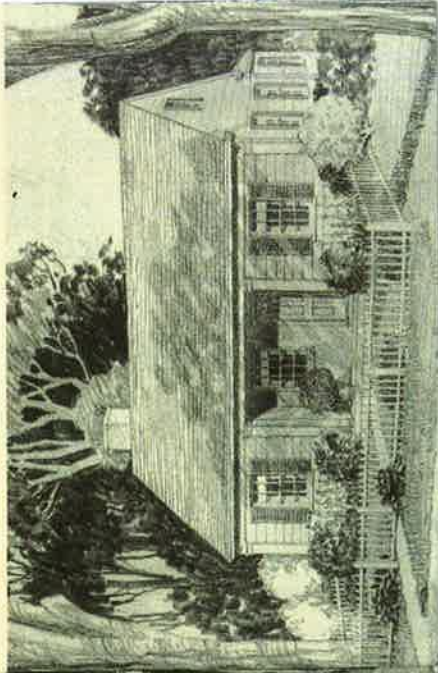
Lea, Pearson & Richards, Architects

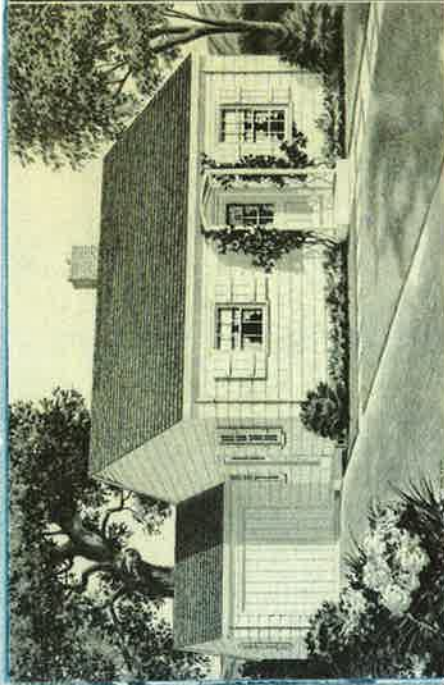
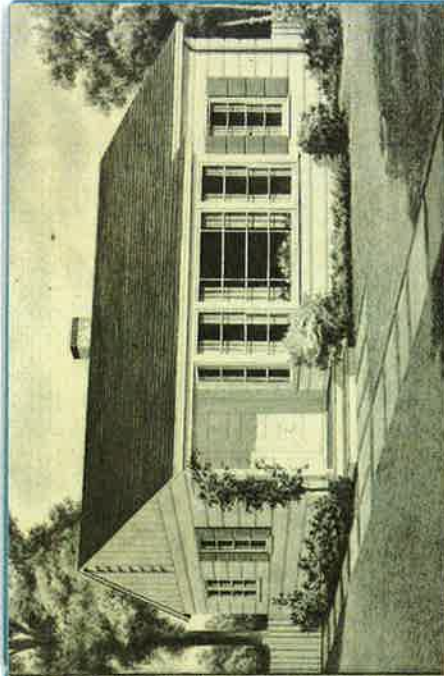


PLAN 41-K
FOUR ROOMS—ONE STORY
19,722 CUBIC FEET

This small home features two porches for those who enjoy outdoor living. The rear porch, which overlooks the garden, can be reached from both the kitchen and living room.

Randolph Evans, Architect

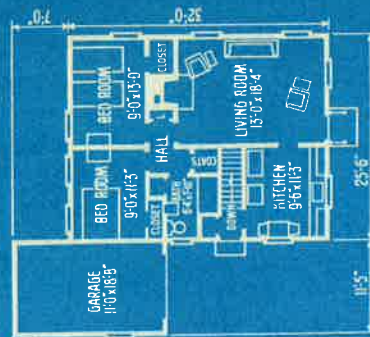




PLAN 41-L
FOUR ROOMS—ONE STORY
19,125 CUBIC FEET

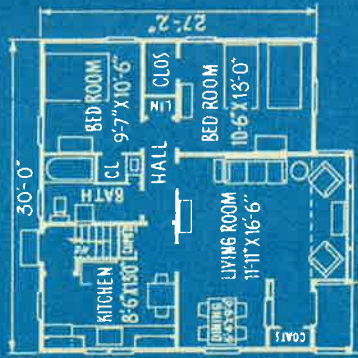
Distinctive details give this small home personality. Just a few steps separate the attached garage from the service door. An attractive fireplace set in a panelled wall adds charm to the living room.

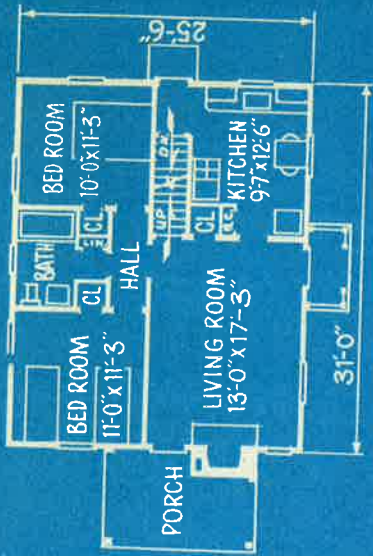
Curtis Chambers, Architect



PLAN 41-M
FOUR ROOMS—ONE STORY
16,700 CUBIC FEET

This popular small home has all the advantages of traditional design combined with modern planning, construction, and materials. The wide living room bay window and the dining alcove with its handy china cupboard add distinction to this plan.

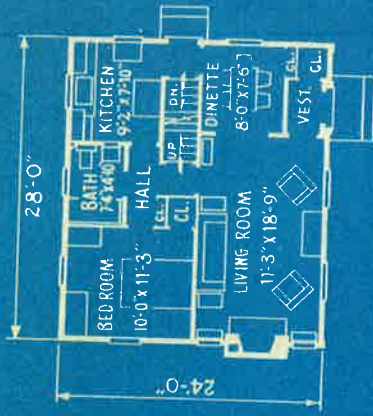
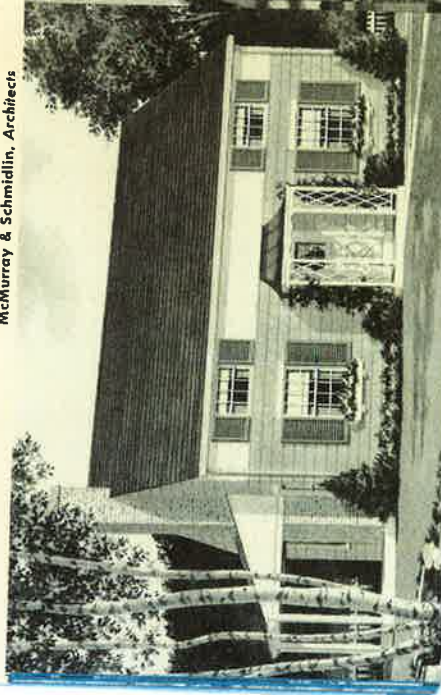




PLAN 41-N
FOUR ROOMS—ONE STORY
18,031 CUBIC FEET

Excellent lines and proportions make this "growing house" unusually attractive. The second floor can be finished off with bedrooms and bath at a later date. The porch provides for gracious outdoor living.

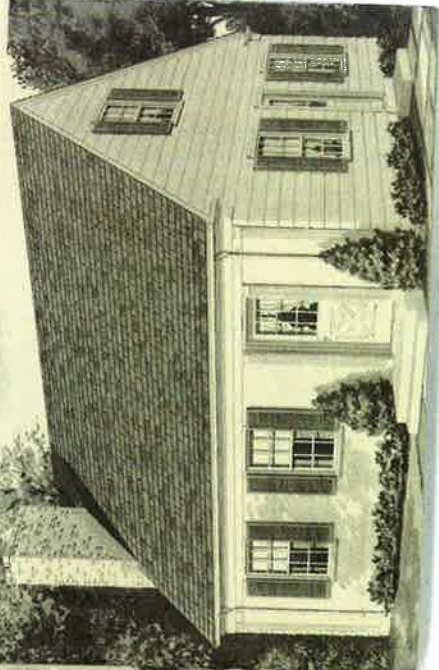
McMurray & Schmidlin, Architects

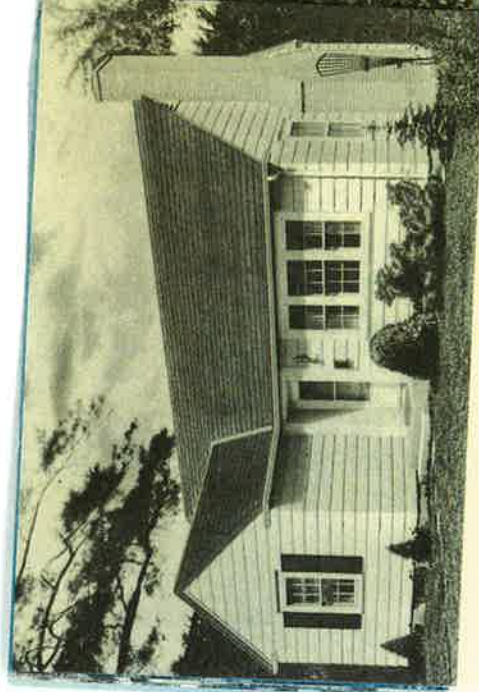


PLAN 41-O
FOUR ROOMS—ONE STORY
14,630 CUBIC FEET

Excellent window placement, good bathroom and kitchen layout, well placed fireplace, and fine exterior details are marks of character in this home which can grow with the family. The stairway to the future second floor is included.

James F. Schindler, Architect

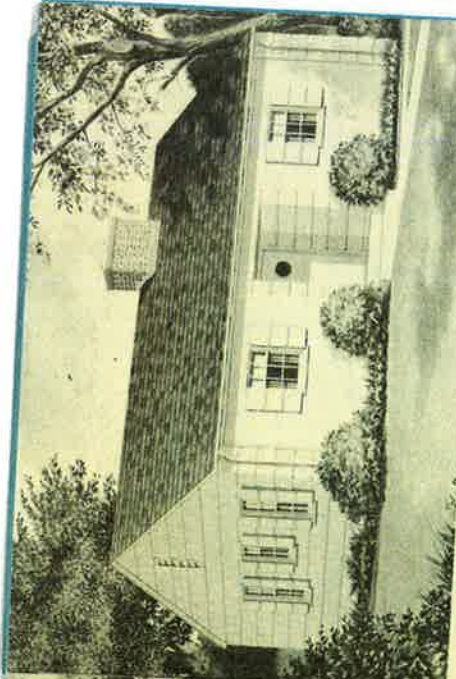
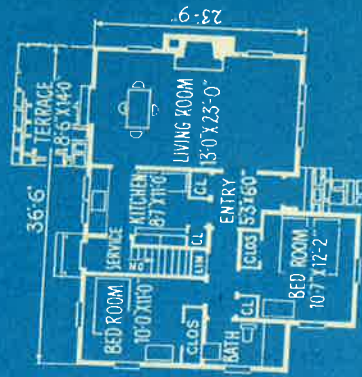




PLAN 41-P
FOUR ROOMS—ONE STORY
19,546 CUBIC FEET

French doors lead from the 23-foot living room to the 14-foot terrace—a secluded and pleasant spot for summer recreation. Note the ease with which all rooms can be reached from the central hallway.

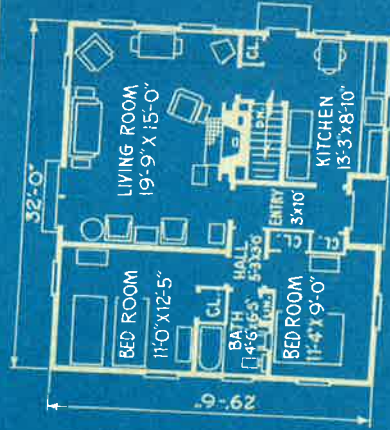
Amedeo Leone, Architect

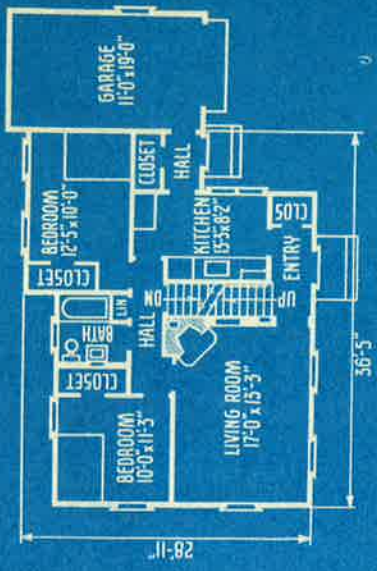


PLAN 41-Q
FOUR ROOMS—ONE STORY
18,687 CUBIC FEET

A feeling of spaciousness greets guests who step through the recessed doorway of this home. Study reveals many features for gracious living. Wide French doors lead from the living room to the terrace.

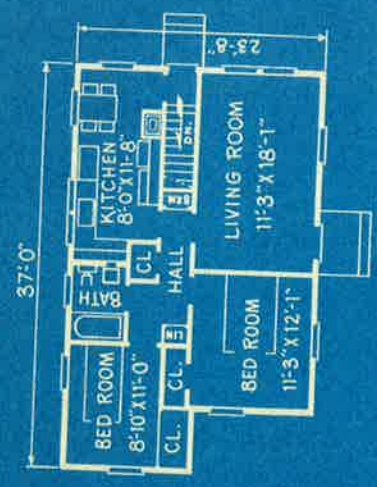
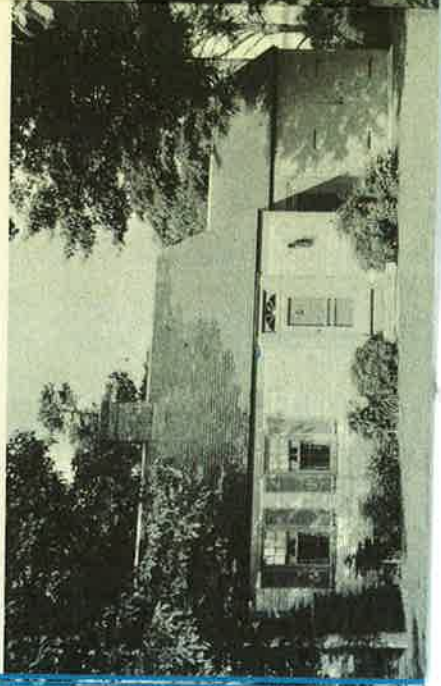
F. M. Overby, Architect





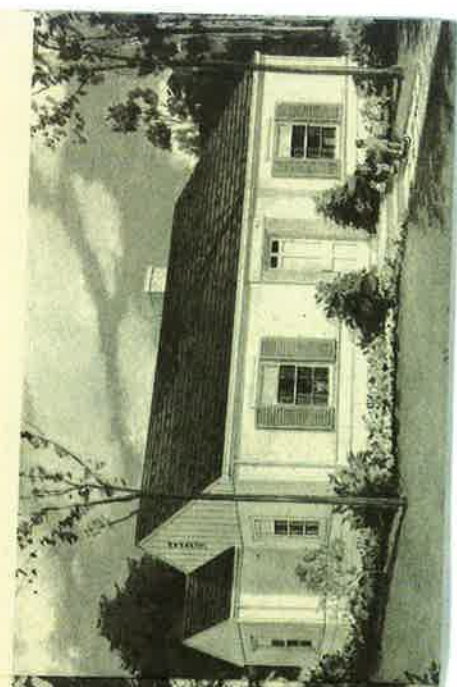
PLAN 41-R
FOUR ROOMS—ONE STORY
22,383 CUBIC FEET

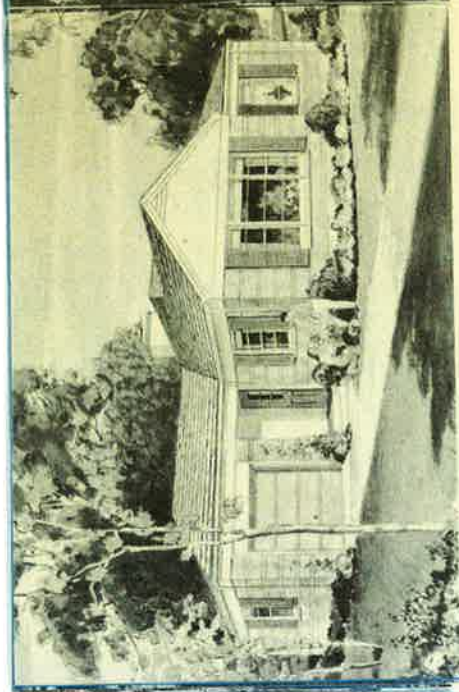
The corner fireplace, with built-in bookcases, gives a cozy atmosphere to the living room. The kitchen has a separate service entrance as well as an entrance to the attached garage.



PLAN 4119
FOUR ROOMS—ONE STORY
15,870 CUBIC FEET

This home retains traditional Colonial beauty, yet is thoroughly modern for ideally serving the comforts of a small family. The rooms are generous and nicely arranged.

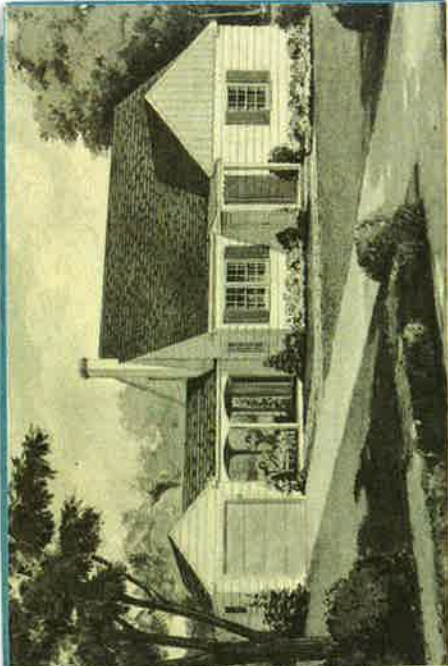
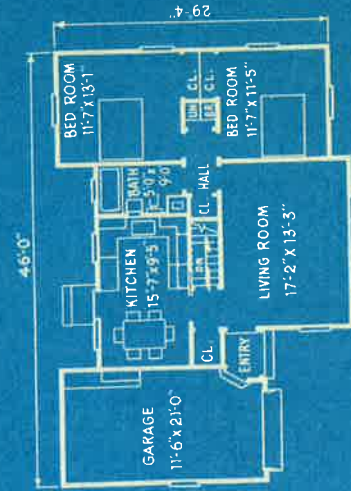




PLAN 4120
FOUR ROOMS—ONE STORY
20,200 CUBIC FEET

This house, with garage attached, is one of the most popular designs in the Service. In addition to possessing architectural character, it's a home that will always be easy to live in—comfortably.

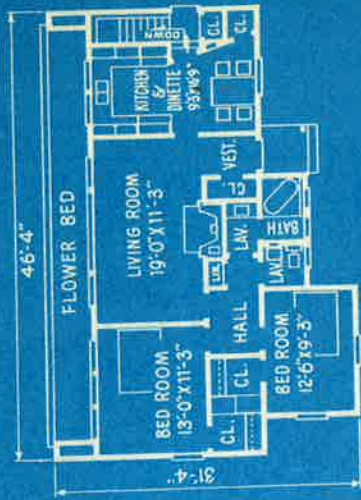
Bertram A. Weber, Architect



PLAN 4121
FOUR ROOMS—ONE STORY
16,850 CUBIC FEET

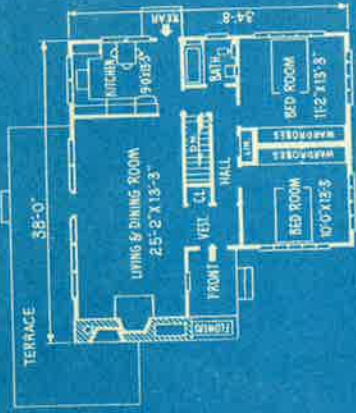
Here you see a really practical home. It can grow with the family's needs. A feature of good planning is the provision for additional bedrooms on the second floor when needed.





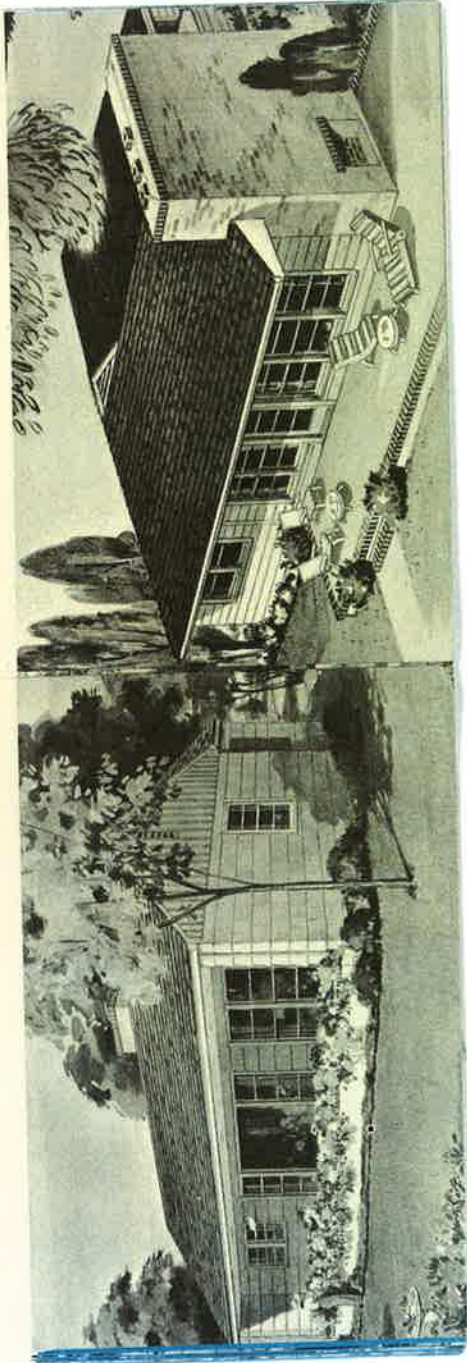
PLAN 4122
FOUR ROOMS—ONE STORY
20,920 CUBIC FEET

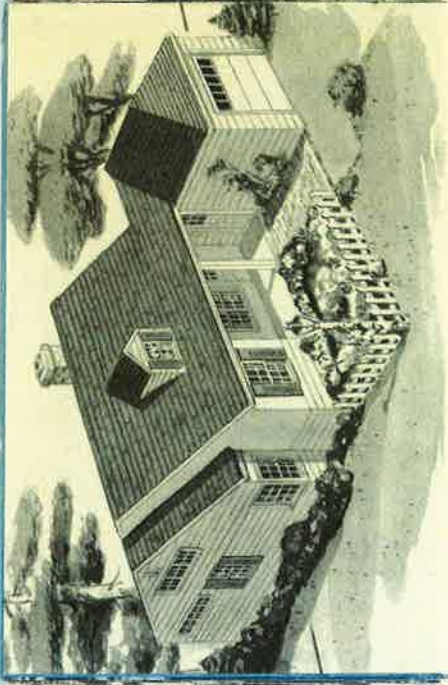
Designed for living with the sun, this solar home—small in size—illustrates how the best in comfortable, economical living can be combined with good colonial styling.



PLAN 4123
FOUR ROOMS—ONE STORY
20,739 CUBIC FEET

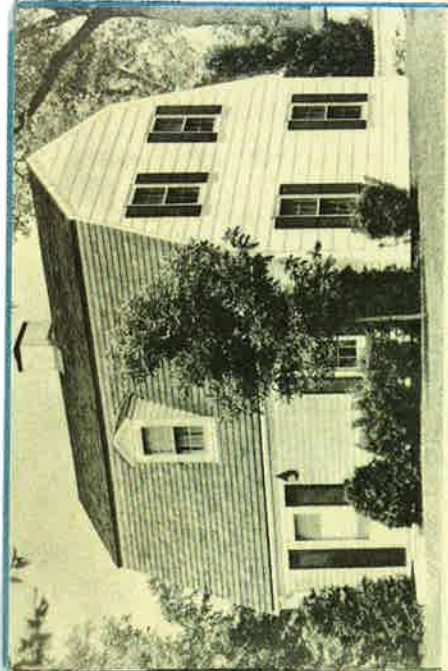
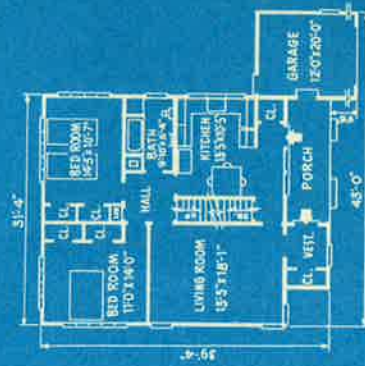
This ideal, modern solar home welcomes the sun when you need it in winter, and excludes its heating rays during the height of warm summer days. You will like this house.





PLAN 4124
FOUR ROOMS—ONE STORY
32,320 CUBIC FEET

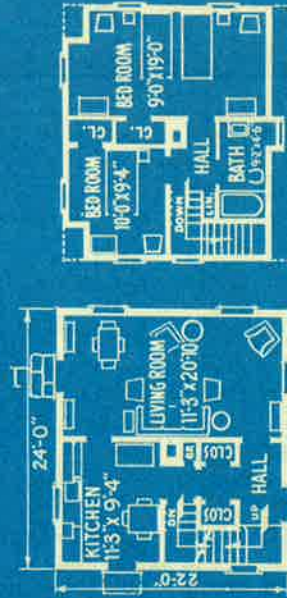
This house will always make "coming home" a joyful adventure. It thoughtfully includes the little comforts that make home ownership a pleasure. There is ample space for finishing additional rooms on the second floor.

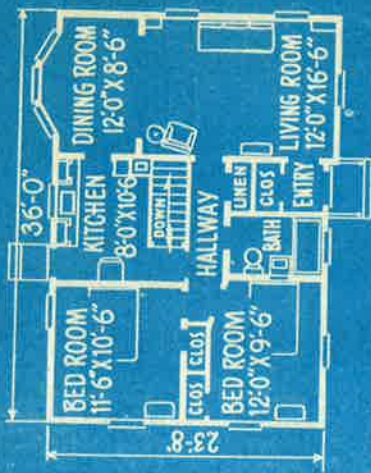


PLAN 42-C
FOUR ROOMS—TWO STORY
11,938 CUBIC FEET

Designed for intelligent economy, this compact 24-foot wide house has been planned to appear low and snug by splendid architectural handling. The living room, with three exposures, extends through the depth of the house.

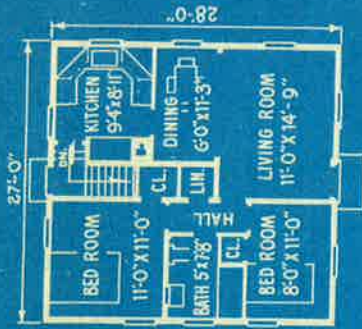
E. H. Lundie, Architect





PLAN 51-C
FIVE ROOMS—ONE STORY
17,096 CUBIC FEET

Note how the living room and dining room, separated only by a wide archway, provide a living area 25'-0" x 12'-0", with windows on three sides for light and air. Privacy and good circulation keynote the bedrooms.

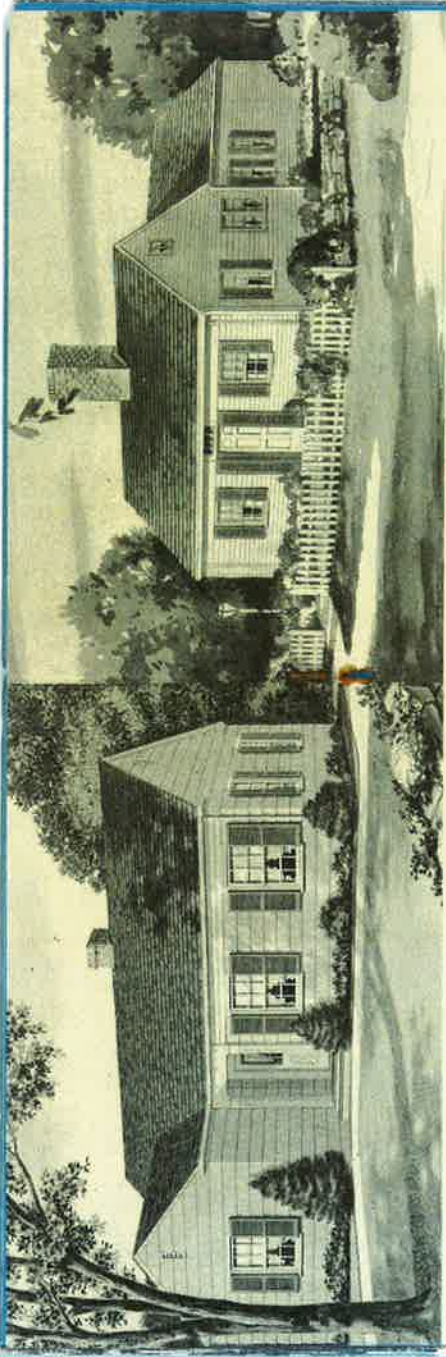


PLAN 51-D
FIVE ROOMS—ONE STORY
14,175 CUBIC FEET

This dignified small home will always be in good taste because of its simplicity of line. Interior features include the popular U-shape kitchen, cross ventilation in each room, and bedrooms planned for quiet privacy.

H. T. Lindenberg, Architect

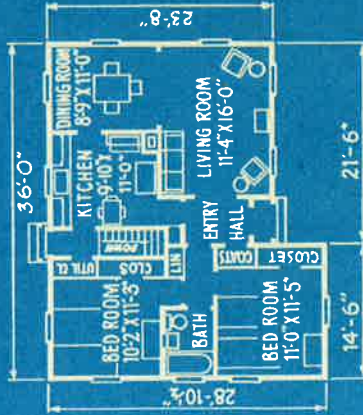




PLAN 51-E
FIVE ROOMS—ONE STORY
18,527 CUBIC FEET

This shingled cottage has many of the outstanding features that spell "home" in the true American sense. The well placed entrance hall gives easy access to all rooms as well as affording privacy to the bedrooms.

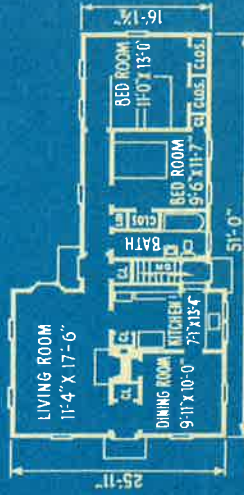
Leo, Pearson & Richards, Architects

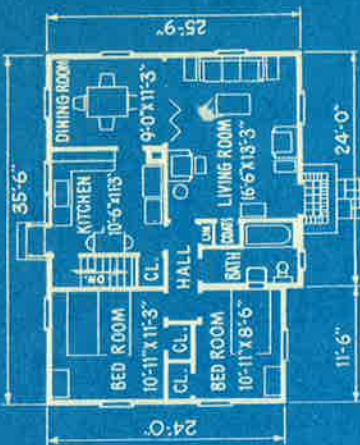


PLAN 51-F
FIVE ROOMS—ONE STORY
19,367 CUBIC FEET

This home is well adapted to the narrow city lot and is also "at home" on a corner plot. The large living room features a handsome fireplace and a bay window that overlooks the garden.

Royal Barry Willis, Architect

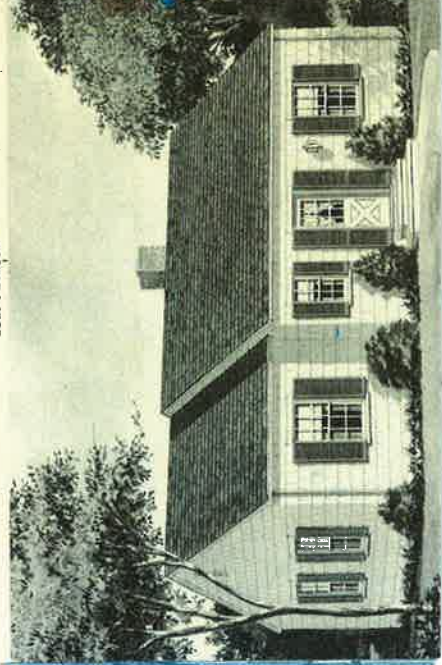




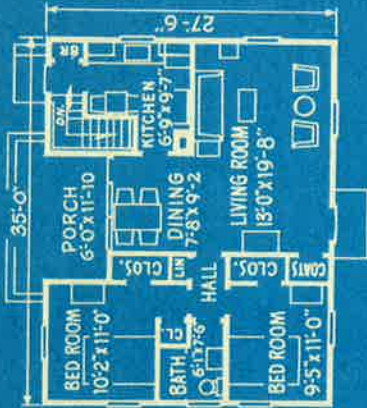
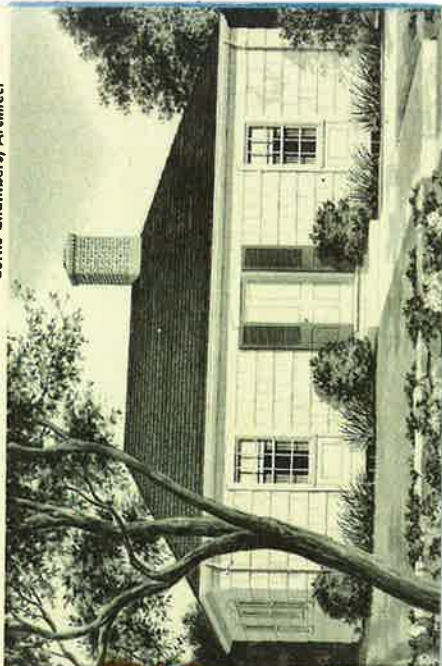
PLAN 51-G
FIVE ROOMS—ONE STORY
18,150 CUBIC FEET

With a mere suggestion of a partition separating the living room and dining room, an air of spaciousness permeates this charming home. Excellent wall space allows pleasing furniture arrangements.

Lee, Pearson & Richards, Architects

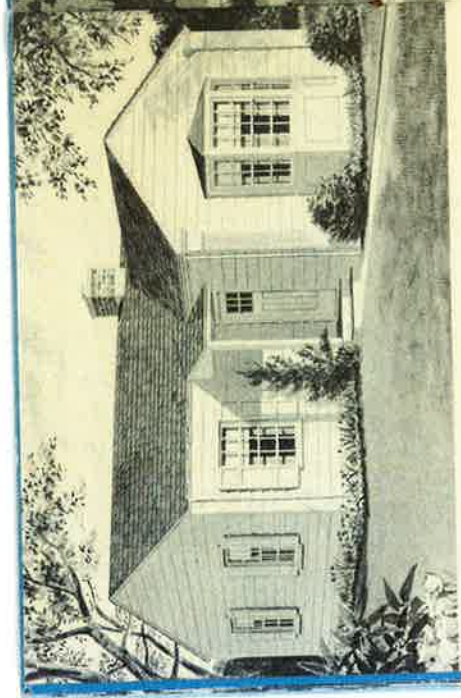


Curtis Chambers, Architect



PLAN 51-H
FIVE ROOMS—ONE STORY
16,630 CUBIC FEET

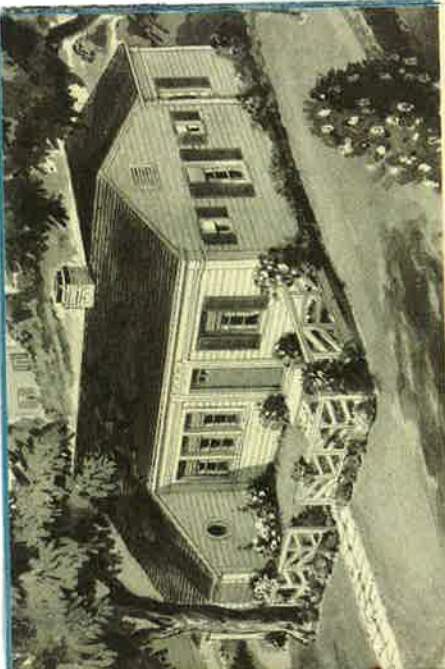
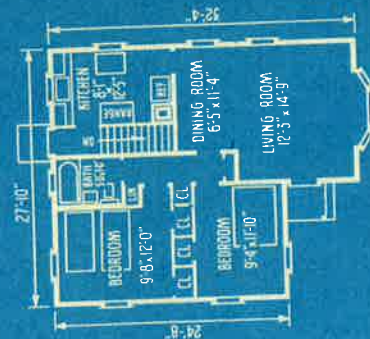
An open layout with easy circulation between rooms is one of the desirable features of this home. The rear patio, (see details) open to the sun but protected from sharp breezes, makes outdoor living enjoyable much of the year.



PLAN 51-J
FIVE ROOMS—ONE STORY
16,061 CUBIC FEET

The friendly bay window and the decorative columns marking the living room wing reflect the character of this home. A sheltered entrance is another welcome feature. Cross ventilation is provided in each of the rooms.

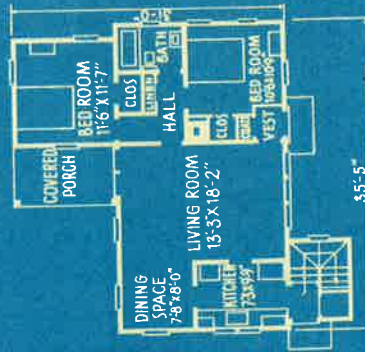
Arthur N. Starin, Architect

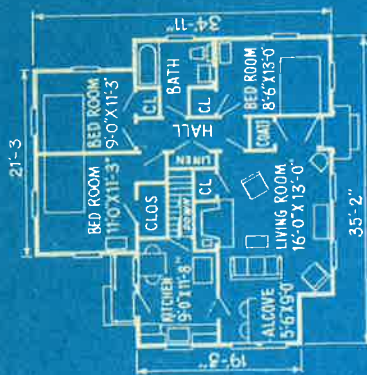


PLAN 51-K
FIVE ROOMS—ONE STORY
17,548 CUBIC FEET

A compact five-room plan, this home has a pleasing variation of line. The sheltered porch opening off the living room is one of a number of practical assets.

H. Vandervoort Walsh, Architect

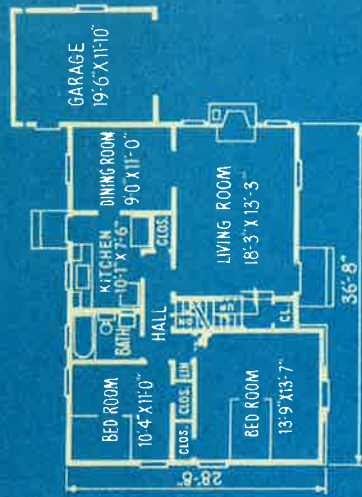
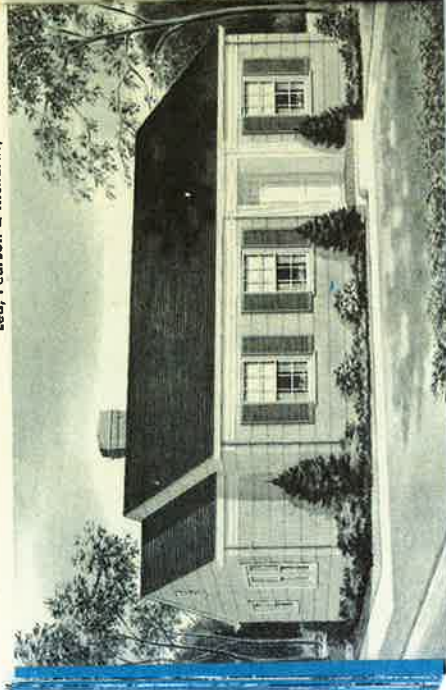




PLAN 51-L
FIVE ROOMS—ONE STORY
27,290 CUBIC FEET

This excellent plan provides three bedrooms, living room, dining alcove, and kitchen—all arranged compactly on one floor. In addition, there are six generous closets for ample storage space.

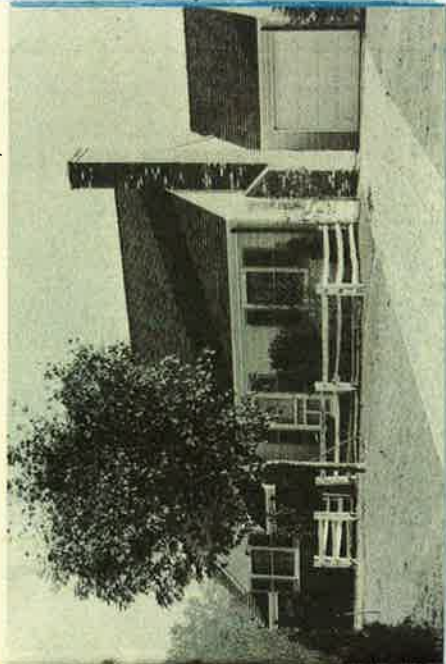
Leo, Pearson & Richards, Architects

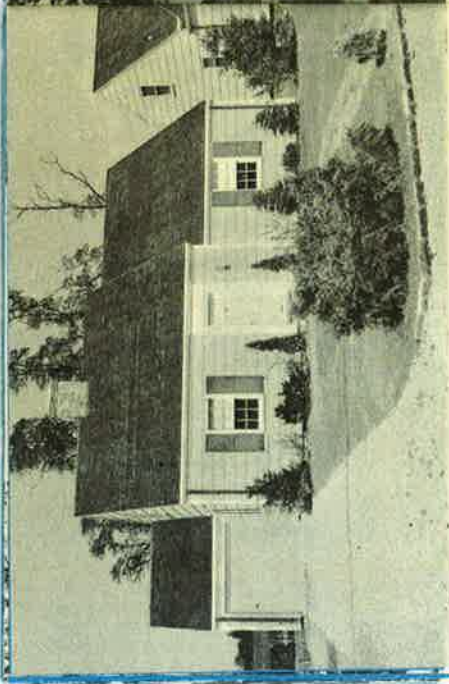


PLAN 51-M
FIVE ROOMS—ONE STORY
22,901 CUBIC FEET

This popular story-and-a-half house, with attached garage, is ideal for the small family. As the family enlarges, the second floor can be finished with bedrooms and a second bath.

John M. Lee, Architect

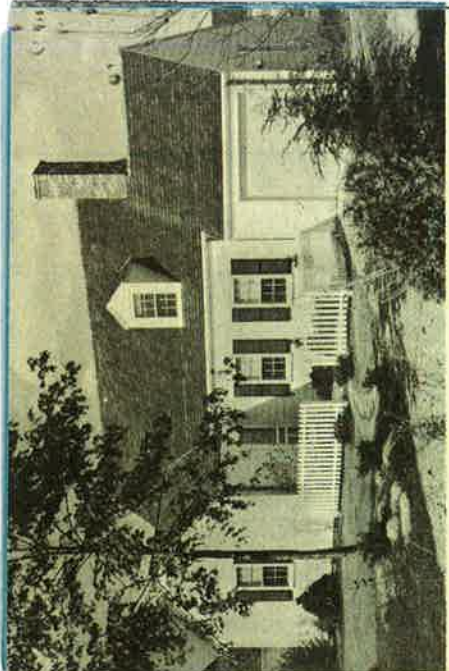
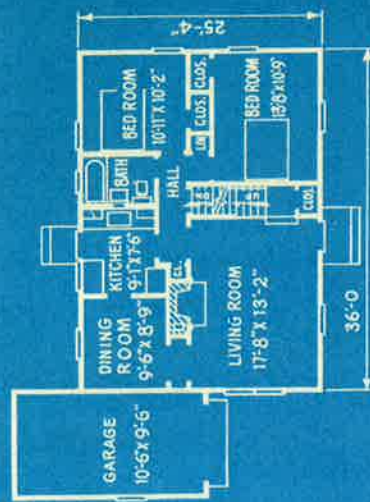




PLAN 51-N
FIVE ROOMS—ONE STORY
21,005 CUBIC FEET

In this charming Colonial design, many features reflect the traditional beauty of New England's architecture. Excellent closet space is provided, including a utility closet off the hall.

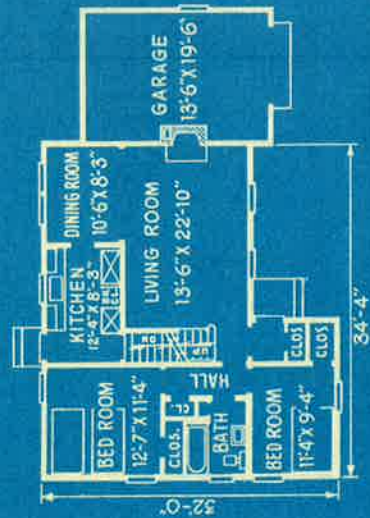
John M. Leo, Architect

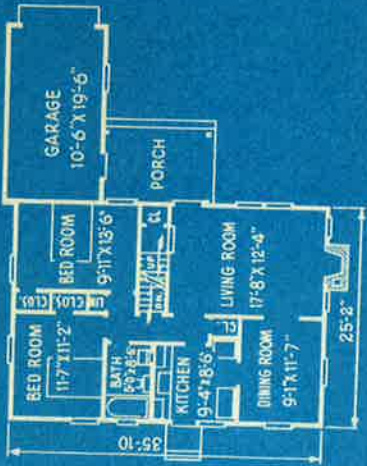


PLAN 51-O
FIVE ROOMS—ONE STORY
21,788 CUBIC FEET

This is another popular version of New England Colonial—with its sheltered front yard and white picket fence. A stairway and dormers are provided so that future finishing of the second floor is practical and economical.

James Scovill, Architect

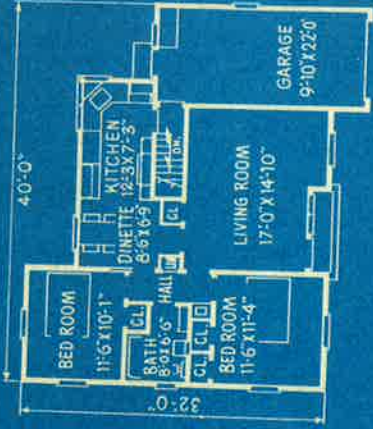
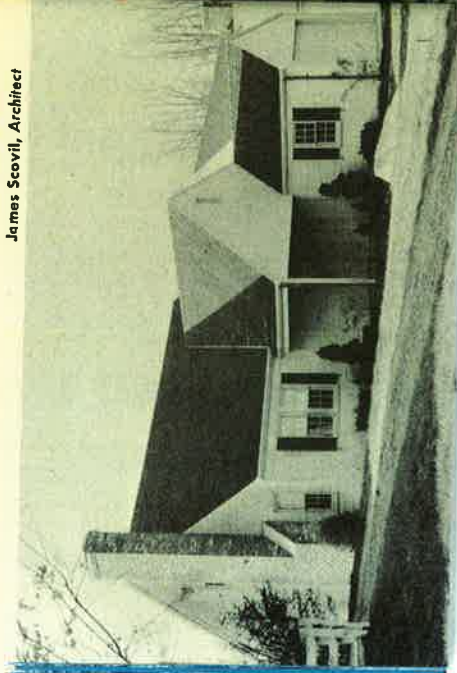




PLAN 51-P
FIVE ROOMS—ONE STORY
21,274 CUBIC FEET

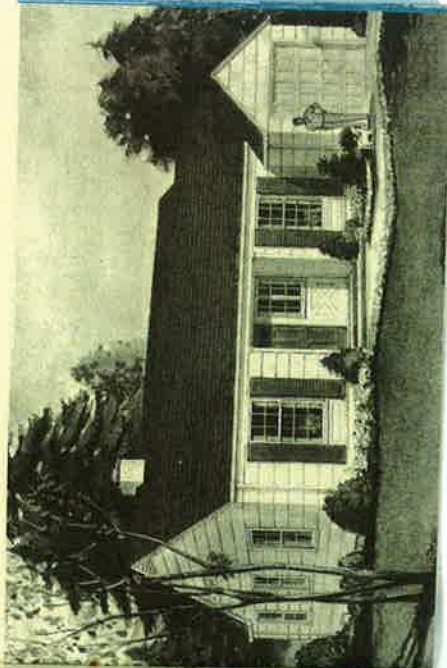
The architect has planned for maximum economies in the plumbing arrangement in this practical design by placing the kitchen and bathroom back to back. The service door from the garage conveniently opens on the front porch.

James Scovil, Architect



PLAN 5117
FIVE ROOMS—ONE STORY
20,330 CUBIC FEET INCLUDING GARAGE

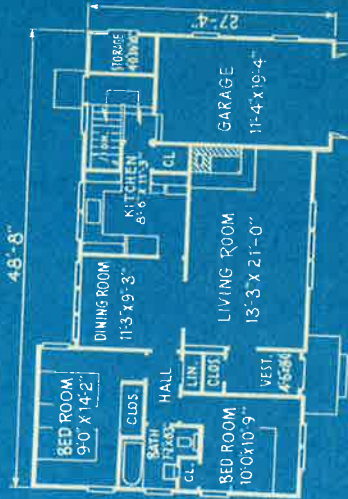
Good looking on the outside—good living on the inside! This modern home has the double endowment of exterior charm with a most generous share of interior conveniences.





PLAN 5118
FIVE ROOMS—ONE STORY
24,230 CUBIC FEET

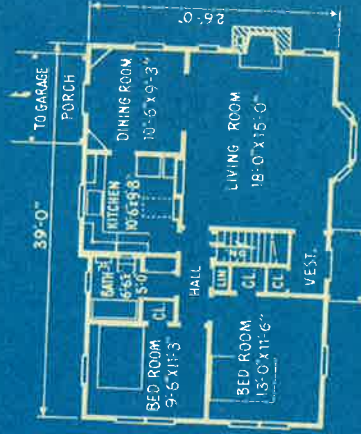
Strong horizontal lines create an appearance of bigness in this house. The garage, fitted snugly and conveniently in place, further enhances the impression of size and livability.

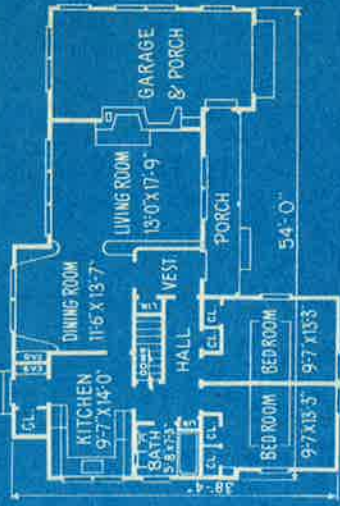


PLAN 5119
FIVE ROOMS—ONE STORY
21,560 CUBIC FEET

This Modified Colonial design is as modern as tomorrow. It's a pleasing home. It's a comfortable home—designed to be good company in any desirable community. The exterior of shingles, flush siding, and vertical boards lend character as well as provide for enduring protective service.

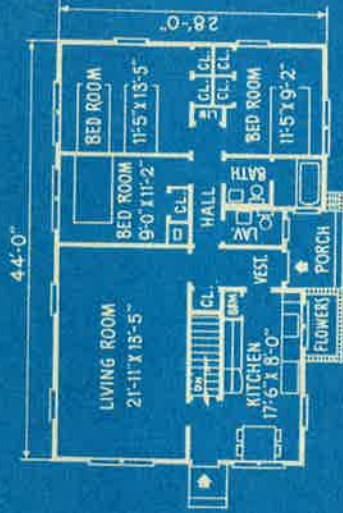
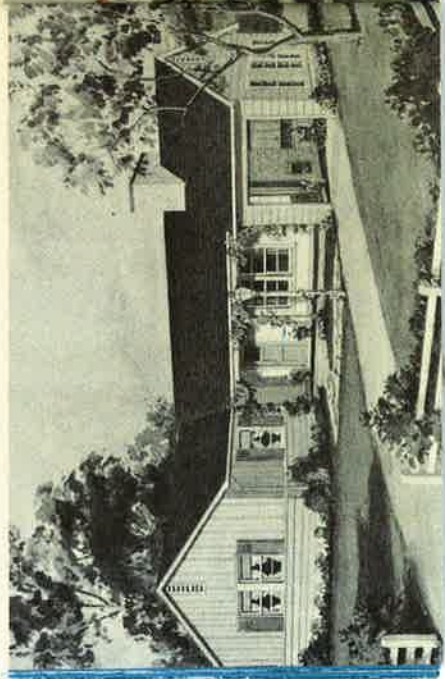
Moyal Linscott, Architect





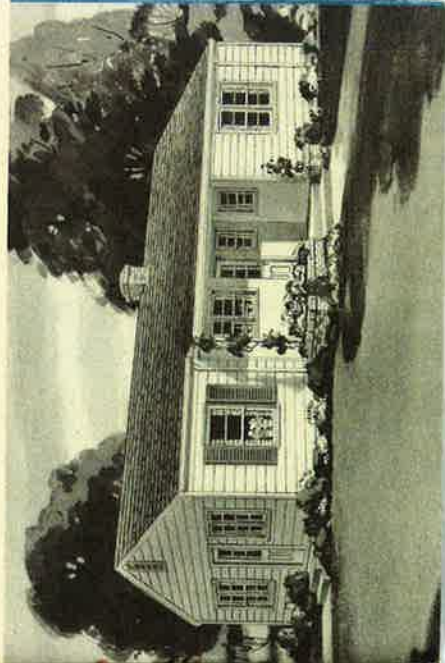
PLAN 5120
FIVE ROOMS—ONE STORY
25,500 CUBIC FEET

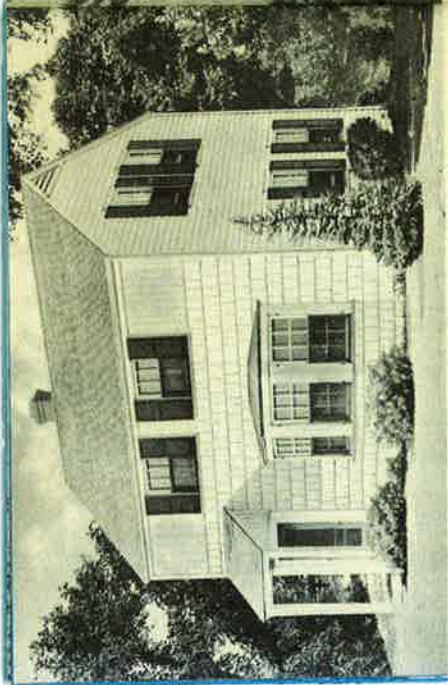
The ranch house, city style, has quickly become extremely popular. With attractive large lots in desirable suburban areas available at low cost, the ranch house is easily within the reach of most families.



PLAN 5121
FIVE ROOMS—ONE STORY
23,057 CUBIC FEET

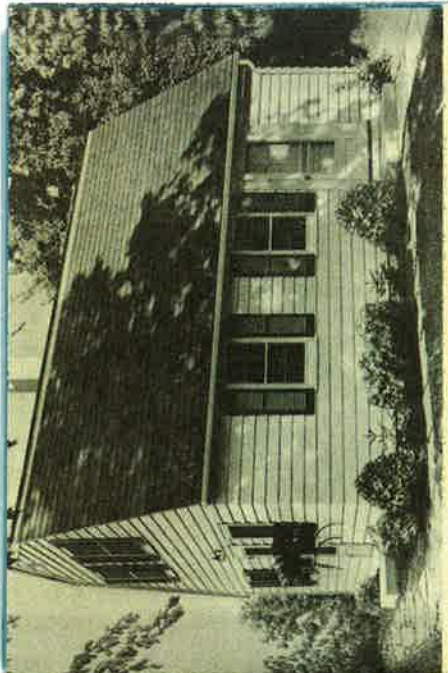
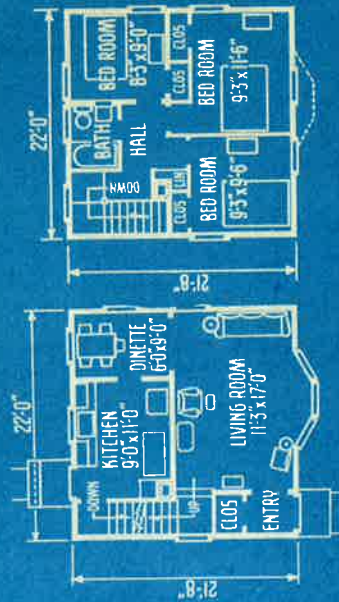
Here you see a truly modern home that will never become "dated." You will find in this design the satisfying comforts which modern progress makes possible, plus the beautiful simplicity of the best in good architecture.





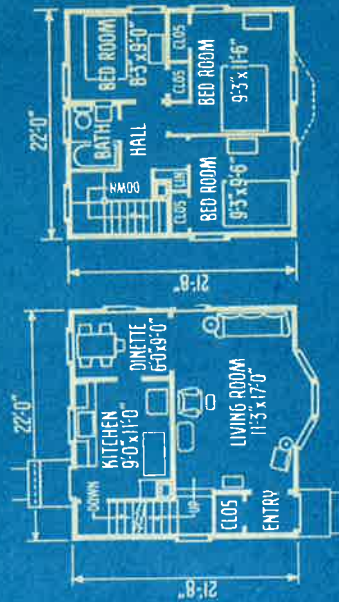
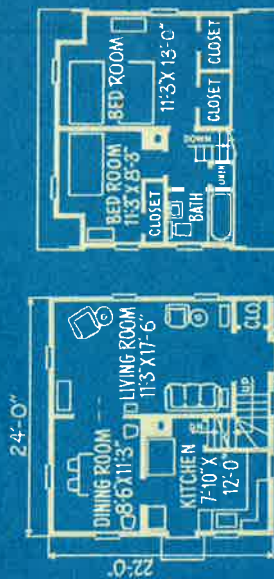
PLAN 52-A
FIVE ROOMS—TWO STORY
13,774 CUBIC FEET

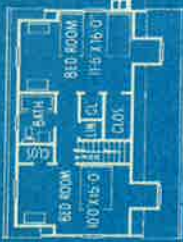
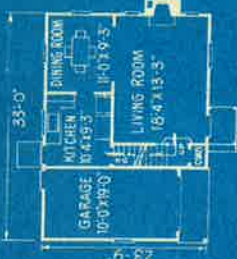
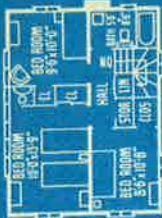
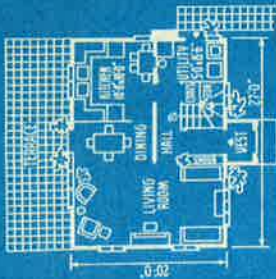
The living room of this striking two-story home features a large bay window and long expanses of unbroken wall space that permit a wide choice of decoration and furniture arrangement.



PLAN 52-C
FIVE ROOMS—TWO STORY
10,569 CUBIC FEET

This well proportioned house makes excellent use of every available foot of floor space. Five closets, with two large ones in the master bedroom, supply more than the usual amount of storage space.





PLAN 52-F
FIVE ROOMS—TWO STORY
10,704 CUBIC FEET

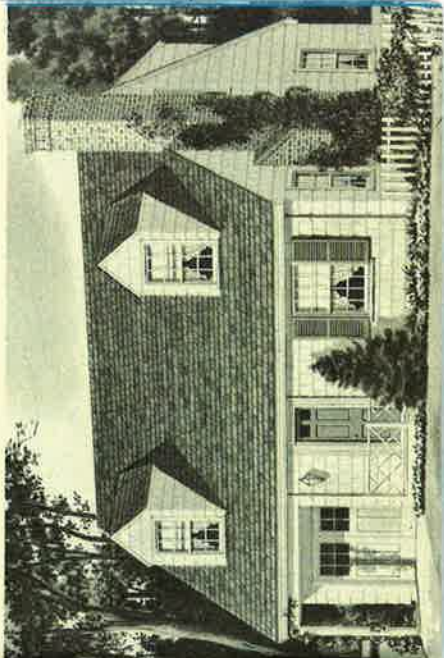
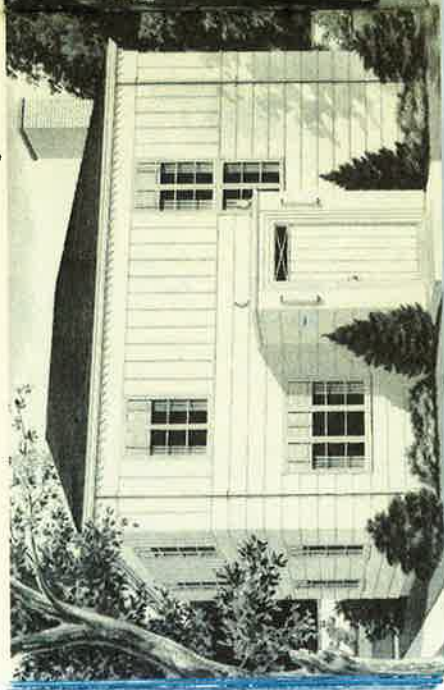
Three exposures, with 16 feet of windows plus a French door, make the living-dining room of this house extremely interesting. An intriguing bookcase treatment helps to form a separate entry.

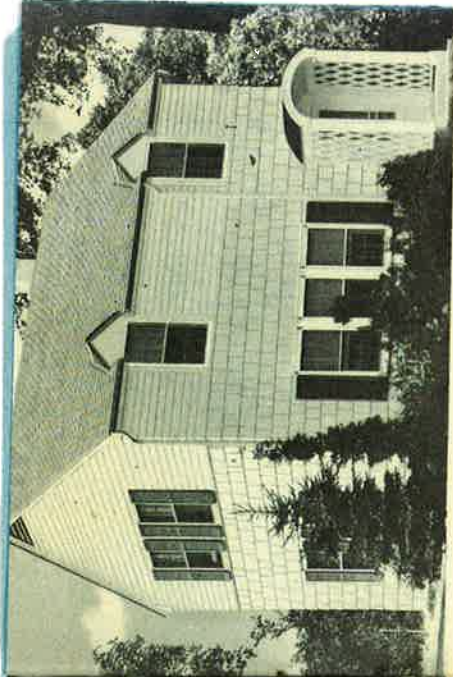
H. T. Lindeberg, Architect

PLAN 52-H
FIVE ROOMS—TWO STORY
17,087 CUBIC FEET

With the dining room adjoining the living room, there is generous space for entertaining in this compact house. Three exposures in both bedrooms provide light and comfortable sleeping quarters.

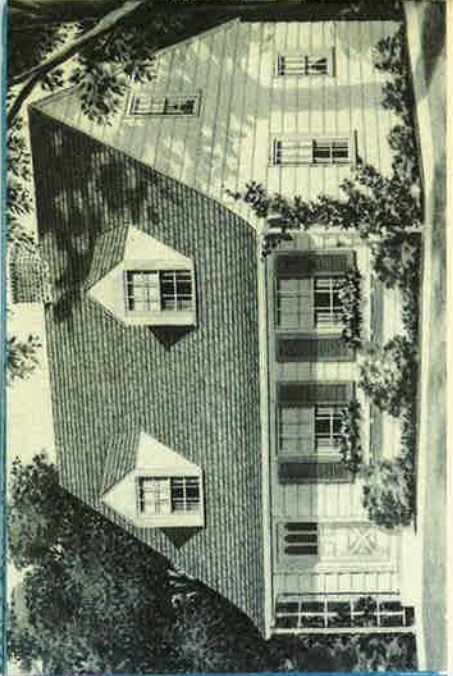
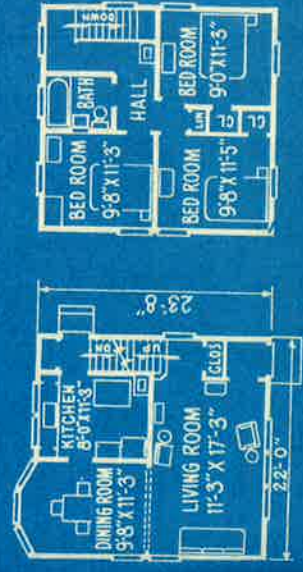
Edward W. Tanner, Architect





PLAN 62-A
SIX ROOMS—TWO STORY
15,689 CUBIC FEET

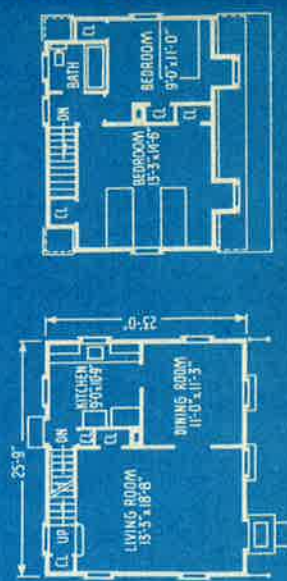
Good window grouping and unbroken wall areas give the living room of this home unusual potentials for a variety of decorative treatments and furniture arrangements. The dining room is charming with its three-window bay.

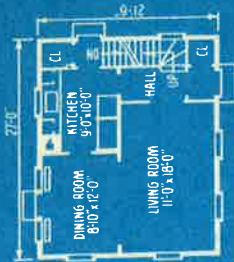


PLAN 52-J
FIVE ROOMS—TWO STORY
14,961 CUBIC FEET

For those who prefer formal dining, the attractive full-sized dining room is completely separated from the living room. The cheery corridor type kitchen has the endorsement of culinary experts.

Robert C. Martin, Architect

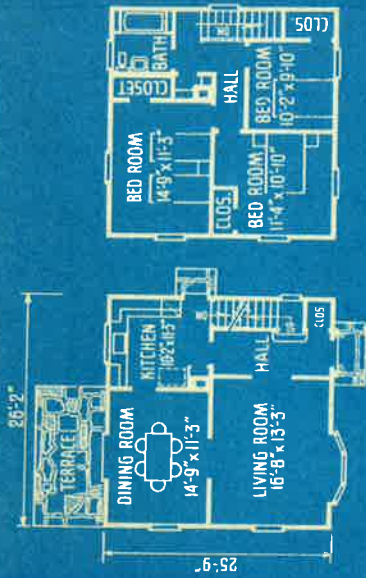
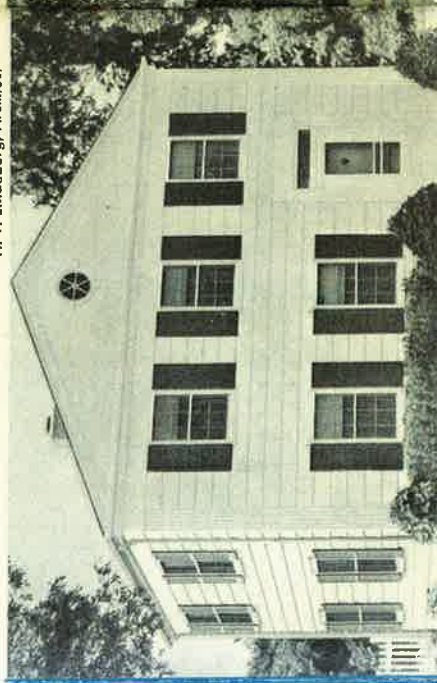




PLAN 62-B
SIX ROOMS—TWO STORY
16,109 CUBIC FEET

A classic exterior in simple good taste features this dignified two-story home. Privacy and good circulation are gained by the well planned entry and hall arrangement.

H. T. Lindeberg, Architect

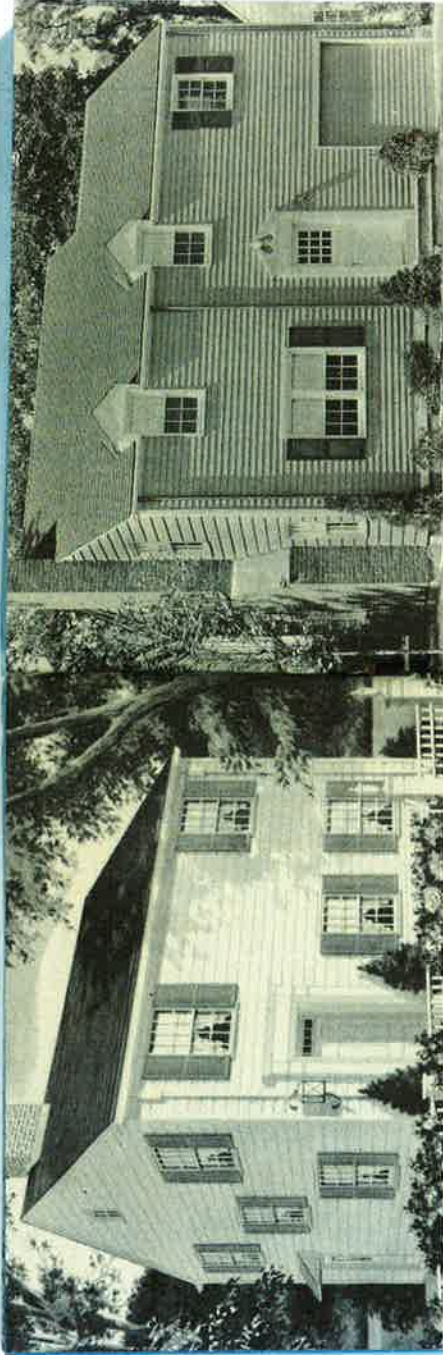


PLAN 62-D
SIX ROOMS—TWO STORY
18,330 CUBIC FEET

This Regency type home is beautifully planned for gracious living. The living room bay and the terrace opening off the dining room are but two of the delightful features you will discover.

Dwight James Baum, Architect

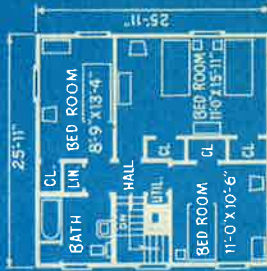
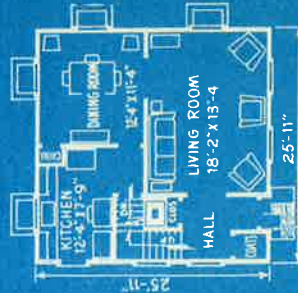




PLAN 62-E
SIX ROOMS—TWO STORY
19,468 CUBIC FEET

The doorway as a focal point of interest is a feature of this home designed in the best New England tradition. As you examine the plan, note the nine generous closets for clothes and utility storage.

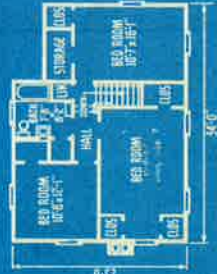
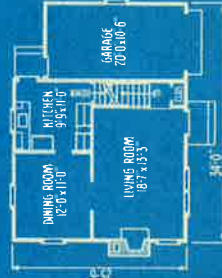
E. H. Lundie, Architect



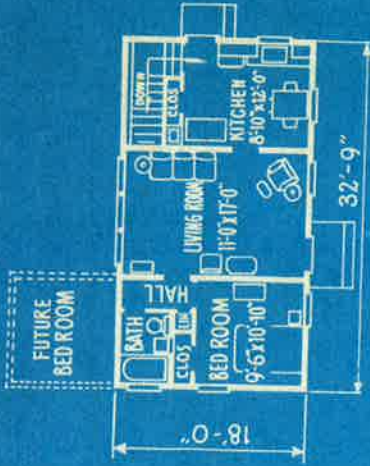
PLAN 62-F
SIX ROOMS—TWO STORY
20,271 CUBIC FEET

Three spacious bedrooms are provided in this pleasing design by making full use of the space above the garage. Cross ventilation, as well as generous closet space, are features of each bedroom.

H. William Johanson, Architect

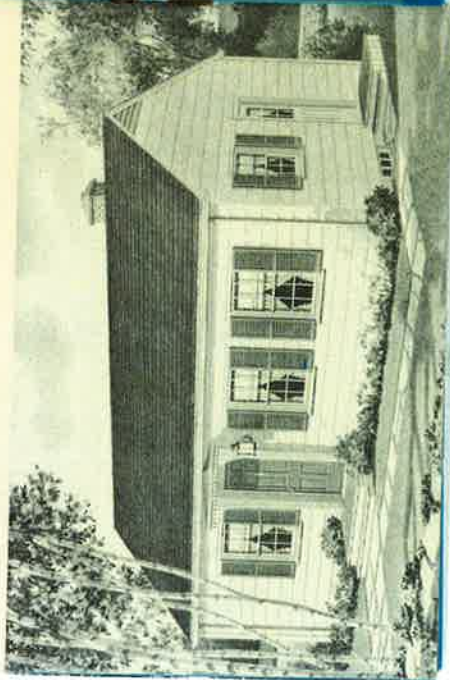


**"This Planning Guide
Gives Professional Pointers
To Home Builders"**



**PLAN 31-B
THREE ROOMS—ONE STORY
11,200 CUBIC FEET**

This three-room home, containing all the virtues of an easy-to-manage apartment, can be expanded conveniently to include another bedroom when desired. The kitchen provides ample space for dining.



Lumber is our best and most economical building material. Nevertheless, the research and technical divisions of Weyerhaeuser are constantly seeking new ways of stepping up lumber performance. Their contributions are doing much toward helping America to secure ever-finer, more serviceable modern structures. The Home Building Service is one example.

WEYERHAEUSER SALES COMPANY
SAINT PAUL 1
MINNESOTA