

Hills' find

COMING!

Lake
Hills

The Birth of a City!

find

SALESMEN, Saleswomen 44

LAKE HILLS

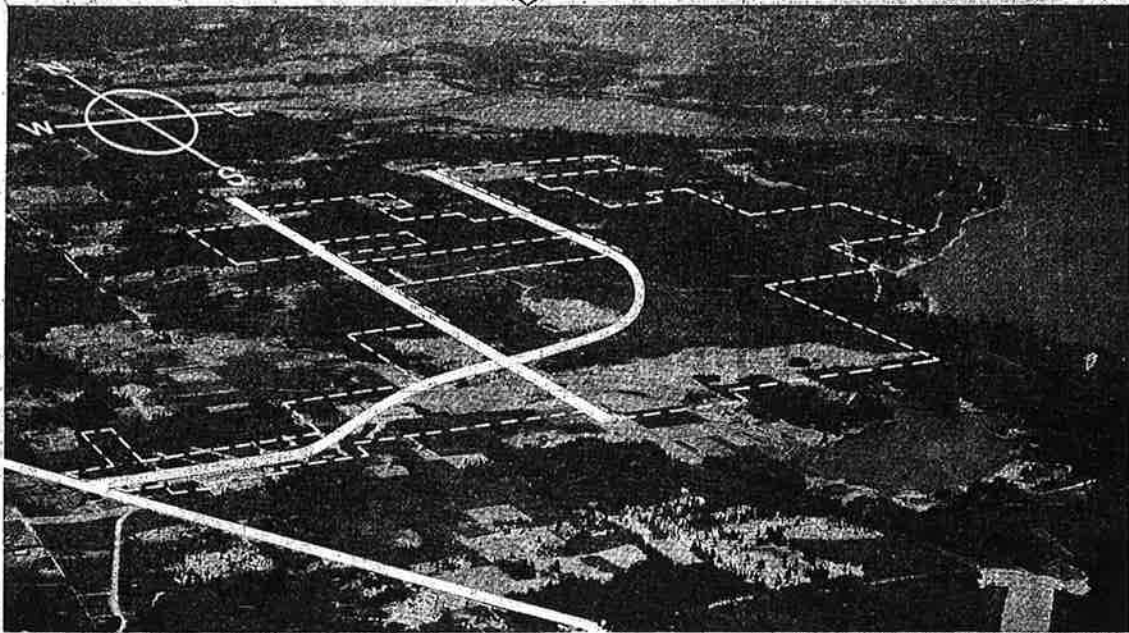
**JOIN A TEAM SELLING
QUALITY HOMES BY
LEONARD IN THE LARG-
EST PLANNED DEVEL-
OPMENT IN THE STATE.
WE WANT MEN ABOUT
30-40 WITH SALES AP-
TITUDE WHO WANT TO
MAKE MONEY.**

**APPLICATIONS ACCEP-
TED FROM 3 TO 6
THURSDAY, FRIDAY &
SATURDAY THIS WEEK
ON THE TRACT. COME
OUT AND SEE A PRE-
VIEW OF THE NEWEST
IDEA IN SUBURBAN
LIVING AND TELL US
ABOUT YOURSELF.**

Drive out Sunset Highway
to Eastgate shopping cen-
ter. Turn North on 148th,
go 1½ miles to LAKE
HILLS, a 1,000-acre city
in the making! Mr. Mc-
Dade, Gibson 5011.



Birth of a City—



— Aerial view of Lake Hills community near Bellevue, Washington.

Lake Hills



IT'S HERE! A model community of 4000 homes resting on 1200 acres of rolling hills and valleys—engineered with facilities to serve an eventual population of 17,000 persons.

Don't miss the grand opening today! Model home open until 10 p. m. every day this week.



DRIVING DIRECTIONS

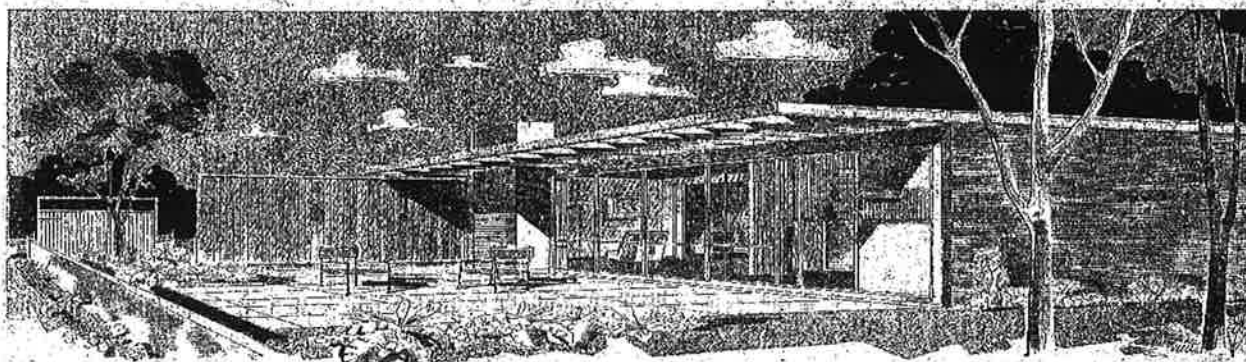
Drive across the Floating Bridge...	Hills signs) onto 148th Ave. S. E.
follow U. S. 10 four miles past Mercer Island. Turn left (following Lake	Follow signs just 1 1/2 miles to Lake Hills ... the Birth of a City!



Page: 65

Date: Sunday, August 21, 1955 Paper: Seattle Daily Times (Seattle, WA) Page: 65
This entire product and/or portions thereof are copyrighted by NewsBank and/or the American Antiquarian Society, 2004

Sunday, August 21, 1955 The Seattle Times



The Home of the Year for Years to Come... by Bell and Valdez in Lake Hills

The 'Modernaire' \$11,750

1,120 square feet, 3 bedrooms with circular floor plan. Eating space in kitchen. 1 1/2 baths available. Utility room, slate entry hall, "window-wall" facing fenced-in outdoor living court.

NOTHING DOWN G.I.

Lowest F. H. A. terms also available

Other Bell and Valdez Homes from \$11,750 to \$15,700

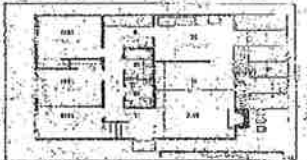
Model Homes Open From 10 a. m. to 10 p. m. Everyday!



IT'S THE "MODERNAIRE" — another completely new home by Bell & Valdez. Here's a three-bedroom home first, packing new ideas for the young at heart. Ideas such as the "window-wall" that runs the width of the home, bringing both light and spaciousness into your snugly-styled living area. The kitchen is the brightest and cheeriest you've ever seen, with a large sliding glass door opening right out onto the fenced-in family court. Other "most wanted" features include a bath-and-a-half, slate entry hall, eating space in kitchen and separate utility. You'll find all this and much more has been woven into a smart, efficient circular floor plan. There are exciting new choices in colors, tiles and fixtures, too. In fact, there's new everything! It all adds up to a home you won't want to miss. See the "Modernaire" and other Bell & Valdez model homes this weekend. See them in Lake Hills... the birth of a model city!



Sketch of new right door (left) from entry hall (center) across the living room, through "window wall" into outdoor living court.



suburban sales, inc. Phone
Exclusives agents for Bell & Valdez Lake Hills Homes
Cubana 2419

N. W.'S LARGEST PLANNED COMMUNITY TO BE OPENED

Langlie To Officiate At Lake Hills

The largest single planned community ever to be started in the Pacific Northwest will be formally dedicated at 2 p. m. today by Gov. Arthur B. Langlie, with a host of dignitaries in attendance.

Lake Hills, which will be populated by an estimated 17,000 persons, lies east of Bellevue on the gently rolling hills overlooking Lake Sammamish. It will be a self-contained city in a country atmosphere, according to the co-builders, Bell & Valdez and Leonard Homes, Inc.

Lake Hills eventually will represent an \$80,000,000 investment, with 4,000 homes resting on its 1,200 acres of wooded countryside. All the facilities necessary to serve a city—schools, churches, parks, playgrounds and shopping centers—are in the plans of the engineering firm, Ruskin A. Fisher and Associates, which represents the land developers.

30 Minutes' Driving

Lake Hills entrance is on 16th Avenue, Northeast. The new city will stretch diagonally over two and one-half miles toward Lake Sammamish. From early driving time to downtown Seattle is only 30 minutes, and with the reality of a second Lake Washington bridge the driving time may be even shorter.

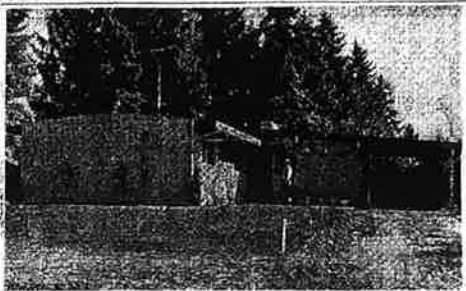
The builders of the new city have withheld public announcement of their grandiose new plans to that their opening day could be one of the most complete that any local residential area has ever had.

"It was our desire to have something really worth seeing before announcing the area," said George Bell, partner in Bell & Valdez.

There will be six completely furnished model homes ready for public inspection today, each one complete with furnishings, appliances, landscaping, fences and lawns already in. The first sections of buyers are in, the water is in and the sales offices themselves are complete.

Rite Variety Offered

The builders believe that the variety of floor plans and the price range of homes being built, from \$10,850 up, will offer prospective buyers almost any size, type and style home they desire. There will be both conventional and contemporary



Indian Art Useful for Homes In Suburbs, Says Architect

Ronald H. Campbell, architect for Leonard Homes, Lake Hills, believes that Northwest Indian art can often be incorporated to advantage in local homes, particularly those in woody suburban areas. He likes to name his home designs for Indian tribes and places.

Consequently, when Campbell found real Indian totem poles for sale near Colman Truck he couldn't resist buying one for the model home opening today in Lake Hills. Totem poles like the one he purchased cost \$10 a linear foot.

While the Indians generally placed such carved totems on poles, Campbell found that his firm fit well against the wood.

Visitors today may look, too, for the grizzly bear on the pole; he was noted for strength and courage and he helped the Indians because they knew they could eat, with safety, any of the plants and roots Mr. Grizzly

loved. Another bear face on the pole represents the chief whose honor the totem pole first was erected.

Campbell says other real totem poles in other colors are available where he bought the totem for Lake Hills. He hopes home buyers in the project will acquire some of them in language.

Variation in Exteriors

A great variety of exterior finishes is available in Lake Hills homes—shingles, brick, vertical or horizontal siding in various types.

Lake Sammamish View

More than 1,000 of the homes in Lake Hills will have a view of Lake Sammamish. Lake view lots will be opened later.

Types of Roof On Homes Optional

Buyers of Bell & Valdez homes in Lake Hills may specify about roofs like those on 10 to 12 to 18 ft. He said the large crowd of visitors expected made the long visiting hours mandatory.

Highway In Good Condition

The modern blacktop highway to Lake Hills from the Sunset Highway is in excellent condition for all-weather driving.

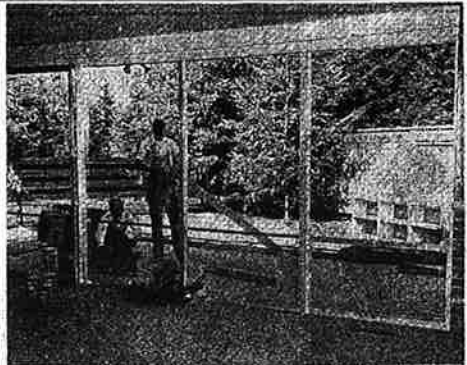
Many Guests Invited To Lake Hills Opening

A large number of dignitaries and other important guests have been invited to a party celebrating the formal opening of Lake Hills today. It will be an afternoon buffet honoring the new community's builders, Bell & Valdez and Leonard Homes, Inc. Wives are included also in the invitation.

Among King County officials on the guest list are Charles O. Carroll, in Lee Evans, Tom McCullough, A. A. Tremper, Ralph S. Stacy, I. M. Dimmitt, James G. Gibb, William Sears and Dean C. McLean. All the state senators and representatives in Western Washington have been invited. Mayors of surrounding cities and towns, including Allan Pomeroy, mayor of Seattle will attend.

The board of directors of Greater Bellevue will be there to congratulate those connected with the big development. All will arrive in the afternoon. President of the Bellevue Chamber of Commerce, among the important Bellevue officials on the invitation list are Phillip Spink, Jay W. Diefel, Ray Neumann, Kenneth Freeman, S. A. Weyersholt, Al Thompson, George Brain, Wheeler Coy and W. W. Kennedy.

The affair will be held in the banquet room of the newly remodeled Crabapple Restaurant in Bellevue.



AIRY FEELING: The Bell & Valdez Modernist model home open today in Lake Hills gets its name from a huge glass-and-aluminum window-wall which extends the full width of the home from floor to ceiling on the living, dining and kitchen sides. Dick Heckford, left, cabinet-shop foreman, and S. J. Anderson, carpenter, were checking final perfection of kitchen cabinets when this picture was taken last week.

Full-Length Window-Wall Gives Airy Feeling to Interior

Visitors to the Bell & Valdez model home open today in Lake Hills will be struck first by the way in which the home opens to the out of doors.

A window-wall extending the entire length of the home gives an airy feeling to the interior and frames a view of the grounds.

The window wall has almost sun eash. It opens on a wide Valdez home are framed with its outdoor-living court. All the of the native overgrown which Bell & Valdez have been careful to save in their hamlets for the beauty of each home.

While the glass wall's attractiveness will be obvious, its outstanding virtue is perhaps the manner in which it opens the kitchen. One entire side of the kitchen is glass, with large sliding glass doors opening onto the court outside. The light, cheery kitchen should make housewarming chores more pleasant and will assist a busy mother in supervision of youngsters playing in the family court.

Governor Langlie to Officiate at Dedication of Lake Hills

Washington's governor, Arthur B. Langlie, has returned in time from the national governors' conference to officiate at the formal dedicatory ceremonies of Lake Hills at 2 o'clock this afternoon. He will unveil a brick pylon at the entrance to the new community and then will address spectators and invited dignitaries.

The governor, who was honored by being elected chairman of the governor's conference, will be assisted today by Miss Lake Hills, Dorothy Erickson. She will represent the huge new development in the forthcoming Parade of Homes next month. This will be Miss Erickson's first public appearance in her role as Miss Lake Hills.

Miss Erickson will present the governor with a silver engraved tray to mark the commemorative event.

Governor Langlie will arrive

at the formal dedicatory ceremonies of Lake Hills at 2 o'clock this afternoon. He will unveil a brick pylon at the entrance to the new community and then will address spectators and invited dignitaries.

The governor, who was honored by being elected chairman of the governor's conference, will be assisted today by Miss Lake Hills, Dorothy Erickson. She will represent the huge new development in the forthcoming Parade of Homes next month. This will be Miss Erickson's first public appearance in her role as Miss Lake Hills.

Miss Erickson will present the governor with a silver engraved tray to mark the commemorative event.

Governor Langlie will arrive

In a motorcade with other dignitaries when he visits Lake Hills today. Among those who will ride in the accompanying automobile, some of them with their wives, will be Mark R. Fryer, Helvin Love, James A. Gibb, Dean C. McLean, William Sears, Earl H. St. John, Sam Roddy and R. H. Gower.

Additionally there will be a mass of ceremonies for the dedication. The permanent brick pylon, surrounded by evergreen shrubs, to mark the entrance of the new city, was designed by John Anderson, architect for Bell & Valdez. Its large letters spelling the name, Lake Hills, are an attractive blue, the same color used for several Lake Hills billboards on the roads nearby.



GOV. LANGLIE

AT BEAUTIFUL

Lake Hills

The Northwest's first completely planned Model City!

QUALIFIED VETERANS MAY STILL BUY A LEONARD QUALITY HOME FOR

NOTHING DOWN

PAYMENTS AS LOW AS

\$60.32 PER MO.

PLUS TAXES AND INSURANCE

ALL OTHERS

LOWEST F.H.A. TERMS

OPEN HOUSE DAILY • 10 A.M. to 10 P.M.

A Model Home - in a Model City!

Make your choice from the many contemporary styles of Leonard Quality Homes in beautiful, picturesque Lake Hills. Each Leonard home is constructed according to high architectural specifications; the materials are the best to be found in homes within this price range. When you step into a Leonard home, you will immediately appreciate the extra care given to detail finishing, the good taste in modern fixtures, and the excellent floor plans—truly designed for modern, comfortable living. Visit a Leonard Model Home today!

THERE'S A LEONARD QUALITY HOME TO FIT YOUR BUDGET! You can buy a Leonard Quality Home for as little as \$10,850. No Down Payment for qualified Veterans. Lowest F. H. A. financing for all others.

As illustrated 1,252 sq. ft.

DIRECTIONS
Drive East over the Floating Bridge on the Sunset Highway (U.S. No. 10). Continue 4 miles past Mercer Island to 142nd S.E. Turn left and follow LAKE HILLS signs north 1 1/2 miles to Lake Hills.

The WESTWOOD

3 bedrooms, bath-and-a-half, family room, fireplace, carport, extra storage.

REALTOR: Quality Homes by LEONARD, Inc.
1217 Lake Hill Blvd. • Bellevue, Washington

LAKE HILLS TO HAVE PAVED STREETS AND SEWERS

Units Tested For Use Of Gas or Oil

The latest in modern oil heating, Centour-Aire Burners by Roscoe, will be installed in Lake Hills homes by both building companies. Roscoe Manufacturing Co., a Seattle firm, is the oldest and largest company of its kind here. Its revolutionary-type heating is the result of long experience and advance design by heating engineers. The units now being installed in the Lake Hills homes have been tested for use with manufactured or natural gas, as well as oil. Centour heating is based on the theory that cold air enters a room through the outside wall and that by placing registers on these outer walls, completely covering them with an even, clean blanket of warm air, the cold air is stopped before it can penetrate the room. The warm-air blanket follows the contour of the room, traveling across the ceiling and making a complete circle of warmth for the living area. Construction trends in contemporary homes, together with the advent of floor to ceiling windows and indoor-outdoor living, suggest that owners live near the outer edges of their homes. This can be comfortable, according to Roscoe engineers. All their units are automatically controlled by troublesome thermostat.

Queen Appointed



FINISHING TOUCH: Examining a lighting decoration installed yesterday in one of the six model homes in Lake Hills was Doreen Erickson who, as Miss Lake Hills, will take part in dedication ceremonies today. The wall is redwood veneer.

Variation In Basic Design Of Homes Shown

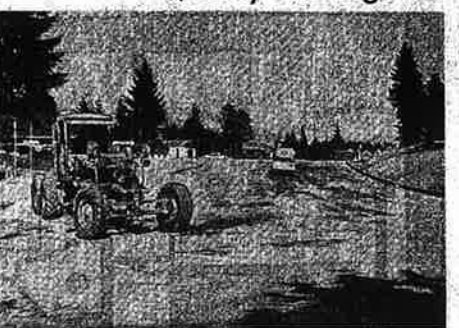
Two models of the Westwood house, built by Leonard Homes in Lake Hills, show how good basic design may be varied to suit different tastes. One Westwood house is built with a conventional roof, the other with a temporary roof features open eaves. The latter features a cathedral ceiling, open roof and light-colored interior that allow a view of the sky and night while giving the exterior a level of privacy. One front wall is covered with windows and has floor-to-ceiling glass. This house is only 22 feet long, will give the owner a line of sight to the mainline highway, and a family room, dining room, kitchen and a breakfast room. The other model is a duplex with a family room, dining room, kitchen and a breakfast room. The Valley Furniture Company has furnished the two models.

Key Workers Stay
Almost all the key workers for Leonard Homes, Inc. have been employed by both father and son in the Leonard family of master builders. More than 90 per cent of the men on the crew when Leonard Homes was formed, are still with the corporation.

Lake Hills Streets to Be Gently Curving

Part of the charm of Lake Hills will be its gently curving streets. They will wind through the city according to a master plan that already has been designed. Two arterial boulevards, 70 feet wide, will carry traffic through Lake Hills but no homes will front on these major streets. According to the developers, "Homeowners will note the wide paving and curbs already in place. The considerable savings in spring assessments to individual home owners was pointed out by the developers yesterday."

SEWER SAVINGS—The importance of an established sewer system for a new community was stressed yesterday by George Bell, partner in Bell & Valdez, and by Kinney Leonard, builders in Lake Hills. Homeowners will be saved approximately 3500 dollars in future sewer assessments, the two men said. Total investment for the builders in the completed sewer system eventually will amount to more than \$2,000,000. Besides saving future expense for homebuyers, the established sewer system will prevent the inconvenience of later street dilapidating and slightly construction work that accompanies sewer installation. Five hydrants also will be installed for fire-fighting coverage in the entire Lake Hills area. A fire station one mile away is nearing completion. The builders pointed out the savings in fire insurance to individuals because of such fire control measures. Lake Hills will have a Class A fire rating. It will have its own huge water reservoir to take care of all community needs.



READY FOR PAVING: Lake Hills Boulevard, one of the broad curving streets in the new community of the same name, was graded with huge road equipment. Machines last week to ready it for paving before today's grand opening. Every street in the development will be paved at the complete 1200-acre section is opened month by month.

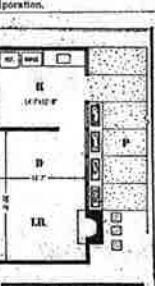
Quality Homes Firm Is Sales Organization

The sales organization for the Leonard Homes project at Lake Hills is Quality Homes, by Leonard, Inc., of which T. A. Peterson, realtor, is the president. Peterson has achieved an enviable record in real estate business since coming to Washington 18 years ago, having sold \$4,500,000 worth of residential property. He was a real estate agent for both Kinney Leonard and his father, H. E. Leonard. Peterson's associates in selling Leonard Quality Homes to a naturally friendly, pleasant personality, plus a sincere effort to give people the finest quality home possible at a moderate budget price.

Formica Equipment
Formica counter tops in kitchens and in bathrooms are found in homes built both by Bell & Valdez and by Leonard Homes, Inc. in the new Lake Hills development.

Doreen Erickson, 19, is a sparkling new queen to represent a new community but her new role is only one of many honors she has received in the recent past. Doreen was a Social chairperson representing the Greenwood district this summer. A pretty brunette, she is a slim 5-foot 5-inch tall. One of the reasons the new queen was chosen is the fact that she lives in a Bell & Valdez home in Eastgate. The eldest of six children, Doreen is getting advice from her brothers and sisters about her role as Miss Lake Hills as she prepares for today's event. The new queen will enter the University of Washington in October to study art, radio and television. A native of Port Angeles, she is a graduate of Cleveland High School here.

Choice of Garage
Buyers may choose the kind of garage they want in Lake Hills homes; they may have single or double conventional garages, single or double carports at their own discretion.



MANY STYLES: The Modernite, Bell & Valdez model house on display in Lake Hills today, has a clean-cut floor plan providing easy access and traffic routes throughout the house.

Plans Made For Schools At Lake Hills

Long consultations between the builders of Lake Hills and the Bellevue school board and school administration have been carried on the past few months to assure schooling for the young folk of the new city. Several proposed school sites are in the plans of the land developers. Already 6 acres of Lake Hills have been purchased for the construction of an elementary school, which will be finished next year. Altogether plans call for four grade schools, one junior high school and a similar high school. They would be part of Bellevue School District 400.

Fun Provided For Everyone in Family

The formal opening of Lake Hills today will be fun for all the family. Both of the builder companies in the new community have planned interesting playthings for children, where the very young can be happily entertained while their parents look at the six model homes. There are sand boxes, swings, water-toters and other equipment in the playground, both near the respective sales offices. The playthings are, of course, permanent installations to be used by youngsters today and tomorrow. Today the well known juggler, Curt D'Almeida, will be on hand to entertain under the sponsorship of Leonard Homes. He will give away bright colored balloon dogs as gifts to visitors.



THE WESTWOOD: This is the floor plan of today's model house built by Leonard Homes in Lake Hills. Ronald R. Campbell, architect, has planned the house for three distinct zones.

DRIVING DIRECTIONS

Drive over floating bridge on Sunset Highway (U. S. 10). After crossing second Meyer Island Bridge drive to 162nd N. E. This is near the entrance to Eastgate. Turn left at highway marker pointing to Lake Hills. Drive north on black top highway.

New Approach To Highway Assured

A long-awaited improvement to highway access for the Eastgate community soon will be a reality, according to George Bell of Bell & Valdez. The closest approach, drawn for the continuously heavy traffic entering and leaving the Sunset Highway from Eastgate, will be a tremendous improvement also for persons living in the new Lake Hills area now being opened. Bell said the State Highway Department has the plans for the approach drawn and the contract is now up for bids. The improvement will be started within 30 days from the time the bid is let, he said.

Bell & Valdez have it in Lake Hills

Seattle's Most Popular Home

The 'TRI-VUE'

A spacious split-level home for the whole family to enjoy!

HERE'S THE HOME Bell & Valdez just couldn't build enough of in Eastgate. Now, the "Tri-Vue" is in Lake-Hills and with some wonderful new features! Here's a practical, contemporary home designed to make a logical separation of family activities. The lower level is for hobby, or extra bedroom and bath, laundry and recreational activities. The living level contains the kitchen, dining area and living room. And the upper, quiet level has the master bath and sleeping room. It's both an inspired and a proven plan. See the new "Tri-Vue" and its smart new Bell & Valdez companion-homes in Lake Hills now. These homes are priced from just \$11,750 to \$15,700 with nothing down for G. I.'s. Lowest F. H. A. terms are also available. These completely furnished model homes are open for your inspection from 10 a. m. until 10 p. m. every day this week. Don't miss the birth of a city!

UPPER LEVEL:
Three bedrooms, 2 1/2 bath, double-plumbing, vinyl floor plan picture window, barbecue optional.

LOWER LEVEL:
Recreation room, second bath, with fourth bedroom or shop area, plus large storage area.

1475 square feet . . . expandable living priced from just \$13,800.

NOTHING DOWN G. I.!

SS suburban sales, inc.
Exclusive agents for Bell & Valdez LAKE HILLS homes . . . Phone Gibson 2419

Sales Force Prepared For Brisk Business



EVERYONE FITCHES IN: Ed McDade is a sales manager, not part of the construction crew for Lake Hills, but everyone was helping with last-minute details of the big new

Ed McDade, sales manager for Quality Homes, Inc., which is the sales organization for the Leonard Quality Homes project at Lake Hills, said that he and the entire sales force expect sales to be brisk from the very beginning. They expect to set some new sales records in this area.

Two features were given: First, that in the past few years there has been a tremendous move by families out of crowded cities into suburban areas, and second, that the American buyer is becoming much more discerning when house-hunting—looking for a combination of contemporary styling and quality construction. Both are stressed in Leonard's Quality Homes.

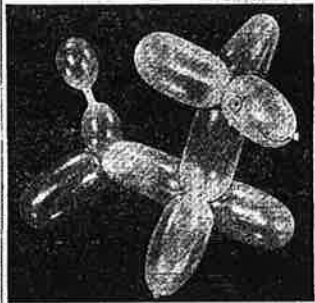
"Quality Homes by Leonard have to many extras to offer," said McDade.

All Leonard Homes feature the new oil-water heating by Husbe, plus fully insulated ceilings; most of the houses have a full bathroom plus a half bath, black-top driveways, built-in vanities, and, at the customer's option, the kitchen can be fully equipped with "ultra-modern" built-in fixtures and appliances by Westinghouse in colors of their choice.

The extra care that has been given to detail finishing in all of the Quality Homes by Leonard, plus good taste in modern

community-development project prepared for its formal opening today. McDade made sure that the big, blue letters spelling Lake Hills were firmly in place at the entrance.

He said the various sales crews will be able to keep pace with the list of prospective buyers that began to accumulate even before the first Leonard Quality Home had been completed in the Lake Hills hope that the Leonard construction



DACHSIE, THE HOUND: Gay balloon dogs in a variety of colors will be given away today at the Lake Hills opening by one of the builders, Leonard Homes, Inc.



WORK-SAVERS: Every kitchen appliance for making meal-making a pleasure is installed in the kitchen of the Leonard Homes, Inc., model home in Lake Hills. From the large-sized built-in wall oven on the right to the electric dishwasher here being installed by Buck Frisk's carpenter, the appliances were planned in a space-saving manner. To the left, but not shown, are a built-in wall freezer and separate refrigerator. The appliances, all by Westinghouse, come with a disposal, washer and dryer. They qualify for F. H. A. loans and may be added to the buyer's mortgage.

Spacious Kitchens Attractive to Women

Women visitors at Lake Hills today and in the weeks of visiting to come, will focus their attention on a spacious family-room-kitchen in a Leonard model house, not only because one end of it contains every known electrical appliance for kitchen use, but also because a large adjoining area will be perfect for all kinds of family recreation.

This area is like a second informal living room and its sliding-glass doors open directly onto a patio. That feature can keep an eye on the children whether they are indoors or out.

At the far end of the kitchen family room is a barbecue built into the chimney, which rises up the center of the house.

The architect has designed the house with three distinct zones—the activity area around the kitchen, the three bedrooms off by themselves and the formal living room for conversation apart from the rest of the house. The formal living room, with no cross traffic, may be an area for relaxation, and its decor carries out the theme of restfulness in a room secluded from the rest of the house activity.

Another unusual feature is the laundry room, with its washer and dryer, incorporated into the half-bathroom between the kitchen and main bath.

The architect, Ronald H. Campbell, said he designed the model house to give the buyer as much for his money as possible. To add to the feeling of

Special Attraction For Young Families Seen



IN A HURRY: Bob Wheeler, manager of Suburban Sales, Inc., has such a long list of prospective buyers for homes in the new Lake Hills community that he hurried every step last week as he prepared for today's opening. Here he waved to a friend as he went out of his sales office, while a large staff will be on hand today to take visitors on four. Suburban Sales is the agency for Bell and Valdez homes.

Bob Wheeler, sales manager for the Bell & Valdez homes in Lake Hills, has devoted much of the past three years to selling other homes by the same builders in Eastgate.

Wheeler said yesterday that the new Lake Hills is "the most outstanding development in the Northwest from a real-estate angle. He believes that the new city will hold special interest for young families.

"Those who are looking for a controlled atmosphere with all the best features of a real city," Wheeler said, "will find Lake Hills the answer to their searching."

Wheeler is sure that the prospect of no future assessments will be a big attraction, he said. Although the two building companies have separate sales forces in Lake Hills, the rivalry is completely a friendly one.

Sites Saved For Construction Of New Churches

When they planned their new city, Lake Hills, the builders considered both with the Seattle Council of Churches and the Catholic Diocese of Seattle about sites for churches to serve the community. The Council of Churches expressed interest in the construction of at least four churches in the vicinity, and plans now are under way for building one of these near the main entrance to Lake Hills.

The builders are providing several good sites for proposed buildings to serve the religious needs of the community.

Basement Rooms Are Convertible

The tri-level house, most popular of all the house designs completed, can become five if an owner wishes to convert two large basement rooms.

Big Bathroom Mirrors

Big mirrors in the bedrooms of Lake Hills homes are incorporated in every design.

READY FOR THE FIRE: This brick fireplace in the Bell & Valdez model home open today in Lake Hills has a raised hearth of Wilkeson stone which is cantilevered from the face of the fireplace by sturdy wrought-iron supports. The attractive wall is redwood veneer. The house is completely finished.



Quality Homes
by **LEONARD**

have EXTRA FEATURES!

- Full Bath plus Half Bath
- Spacious Family Room
- Ultra-Modern Indoor Barbecue
- Recreation Room
- Brick-wall Fireplace
- Glass Sliding Doors to Patio
- Choice of your own Colors
- Select Hardwood Cabinets
- Large Wardrobe Closets
- Built-in Mahogany Vanity
- Huge Plate Glass Mirror
- Black-top Driveway
- Built-in Colored Kitchen Appliances by Westinghouse: Refrigerator, Oven, Range, Freezer, Dishwasher, Disposal, may be added to mortgage.

NO DOWN PAYMENT FOR QUALIFIED VETERANS

ALL OTHERS
LOWEST F.H.A. TERMS
LOWEST DOWN PAYMENT—LOWEST MONTHLY PAYMENTS

BEFORE YOU BUY—CHECK THE...

LEONARD

Quality Homes at Lake Hills



3-BEDROOM RAMBLER—FROM \$10,850

LEONARD HOMES are quality-built . . . planned, designed and constructed by top craftsmen in the building industry. Beautiful architecture, finest modern fixtures and high-quality workmanship are regular Leonard features, offered for the first time in budget priced homes. You will enjoy suburban living at its best when you own a Quality Home by Leonard . . . in picturesque Lake Hills . . . just 20 minutes from downtown Seattle.

OPEN HOUSE FROM 10 A. M. TO 10 P. M.

It's Open House every day at Lake Hills. Be sure to see the three completely furnished Leonard Model Homes. Free Balloon-Poodles Sunday, August 21!

REALTOR: Quality Homes by Leonard, Incorporated
14217 Lake Hills Blvd.—Bellevue, Wash.—Gibson 5011

YOU'LL ENJOY CONVENIENT SPACIOUS LIVING IN A LEONARD "QUALITY HOME"



The EVERGREEN

Illustrated: 3-bedrooms, recreation room, fireplace, carport, utility, inside and outside storage . . . \$12,750

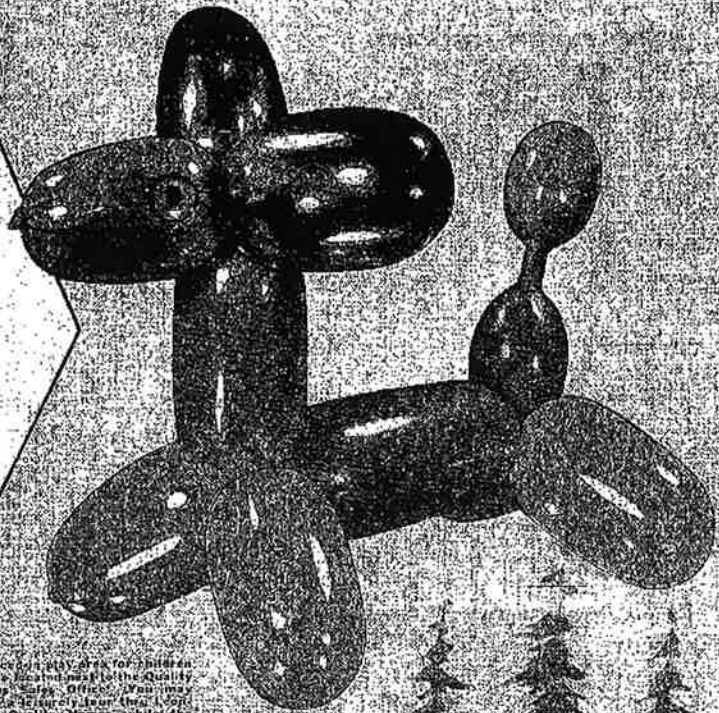
DIRECTIONS



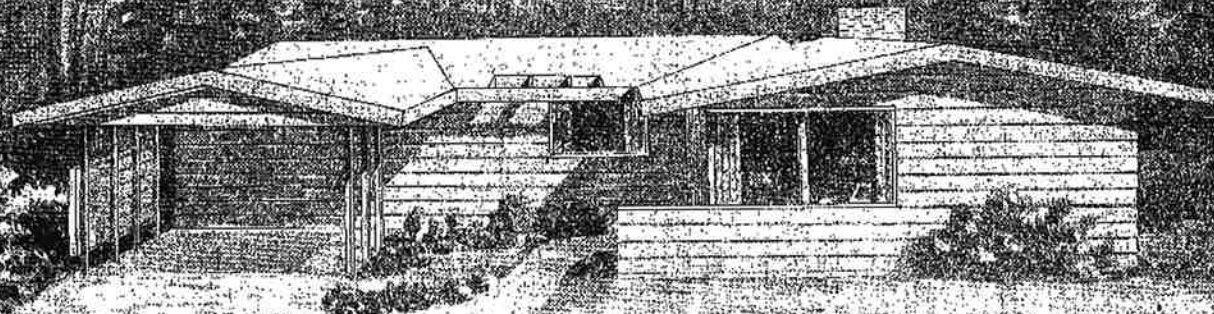
LEONARD ... the House that Quality built

BALLOON POODLES FOR EVERYONE!

While you are visiting Lake Hills on Sunday, you will receive one of these delightful Balloon-Poodles absolutely FREE! Bring the kiddos if you wish... there's a Balloon-Poodle for everyone. Children will love to see Magician Chris DiJulio make them in all the colors of the rainbow... at the special Quality Homes Balloon Booth all day Sunday, August 21st.



A large variety area for children will be available at the Quality Homes Sales Office. You may enjoy a leisurely lunch there. Soft drinks, Quality Homes "white" the "tree" and "bake" are also available.



THIS IS A
Quality Home
by **LEONARD**

OPEN HOUSE EVERY DAY
10 A.M. - 6 P.M.

AT BEAUTIFUL

Lake Hills

VISIT OUR MODEL HOMES

The LEONARD Homes Have Extra Features

- Full Bath plus Half Bath
- High Quality Interior Finish
- Carpet-colors your own choice
- Solid Hardware Cabinets
- Westinghouse Dishwasher, Disposal
- Rescue Outdoor Air Heating
- Sliding Glass Doors to Patio
- Built-in Freezer, Refrigerator, Sink and Drip

At Lake Hills, Quality Homes, Leonard's contemporary in design and quality built homes are priced from just \$10,450! When you look at the Leonard Model Homes, consistently designed and built for your enjoyment at beautiful Lake Hills, you will notice the care given to detail, including the high quality materials used for interior and exterior. The emphasis placed on convenience of floor plan, and best of all, the fact that many LEONARD Homes are built in a Leonard Home! It's a Quality Home for everyone.

NO DOWN PAYMENT TO QUALIFIED CREDITORS! Visit us at the Quality Homes Sales Office.



ON CEDAR VIEW

1,200 sq. ft. of living space, 2 bedrooms, 2 bathrooms, 2 closets, 1 car garage, and a finished basement.



A LEONARD HOME IS QUALITY-BUILT FROM THE GROUND UP!

FOUNDATION

Each home is built on a solid foundation of concrete.



ROOFING

Each home is built with a high quality roof.



WINDOWS & DOORS

Each home is built with high quality windows and doors.



EXTERIOR FINISH

Each home is built with high quality exterior finish.



DIRECTIONS

From the north, take Highway 101 South to Highway 102 East. Turn right on Highway 102 East and follow it to the end. Lake Hills is on the right.

LEONARD ... The House that Quality Built

REALTOR: Quality Homes by LEONARD, Inc.
14527 Lake Hills Blvd., Bellevue, Washington



The Pacific Northwest's First Model City

Completely planned to contain all the facilities of a self-contained city. Lake Hills... a model community designed for modern, convenient suburban living. Just 20 minutes from downtown Seattle!

Lake Hills

Here's what Lake Hills offers your family:



Schools

New elementary school, junior high and a high school will be convenient to the children of every Lake Hills home.



Shopping Centers

Plans provide for a modern shopping center with all the facilities necessary to serve a community of 17,000 persons. Several neighborhood shopping centers are also proposed.



Convenience

Your Lake Hills home is away from it all... yet just 20 minutes from downtown Seattle (15 minutes from industrial Seattle)... 15 minutes from Bellevue... 10 minutes from Kirkland... 5 minutes from Bellevue and Lake Washington... 12 minutes from Eastgate.



Modern Sewer and Water System

Lake Hills has its own modern sewer system... going away with the modern sewer lines which are installed in most suburban communities. A two million gallon water reservoir serves Lake Hills residents of adequate water supply and pressure.



Churches

The spiritual needs of the community will be provided for with churches of several denominations. Proposed sites are being made available for these churches.



Paved Streets and Parkways

Beautifully landscaped boulevards and wide, winding streets make Lake Hills a pleasant, traffic-free community. All streets will be paved with curbing and gutters included.



Playgrounds and Parks

Numerous playgrounds will be close to every Lake Hills family in schools are constructed. Large nearby parks offer facilities for picnic and recreation.



A Recreation Wonderland

Whether in the Lake Sammamish of Lake Washington for swimming, boating or fishing. Horseback riding on regular trails, horse trails or Equestrian golf courses, picnic grounds and other recreation points, Lake Hills is just minutes away from all that has to be an hour to mountain lakes and streams fishing, skiing and hiking.

EXPERTS ARE TO ASSIST IN LAKE HILLS DEVELOPMENT

Designs Are Result Of Long Study

John W. Fisher, the architect and builder of the new city, Lake Hills, have represented themselves with reports in many fields.

Two such men are John Anderson and Robert M. Anderson, both of whom are well known in the building industry. Anderson who has been with the firm for many years, is the architect and builder of the new city, Lake Hills. Anderson and Fisher, who are both well known in the building industry, have represented themselves with reports in many fields.



SUCCESS STORIES Three young men all in their 19's, all veterans of the Second World War, are working hard to make a name for themselves in the homebuilding industry. Serving their country with honor and distinction, they are now working hard to make a name for themselves in the homebuilding industry.



BUDGET The budget for the new city, Lake Hills, is estimated to be \$1,540,000. This budget is for the construction of the new city, Lake Hills, and includes the cost of the land, the construction of the buildings, and the cost of the utilities.



LANDSCAPING IN: C. W. City, head of Eastern landscaping, is shown at work on the new city, Lake Hills. The landscaping is being done by C. W. City, head of Eastern landscaping, and is being done in a very professional manner.

Bell, Valdez Climb Fast To Success

Behind the corporate success of Bell & Valdez is a story of hard work and determination. The two young men, Bell and Valdez, have worked hard to make a name for themselves in the homebuilding industry.

Leonard Homes a Tradition

They will arrange that the Leonard family name is a tradition in the homebuilding industry. Leonard Homes has a long history of building high-quality homes in the Lake Hills area.

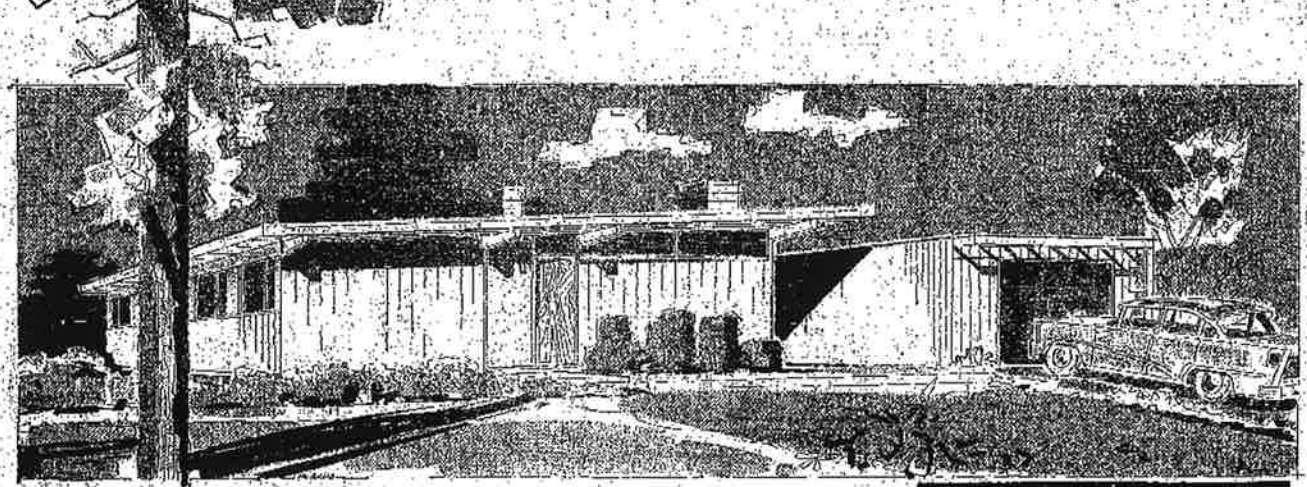


PROUD MOTHER: Mrs. Leonard, mother of the Leonard family, is shown in a professional setting. She is dressed in a dark dress and appears to be engaged in a discussion or looking at documents.

Convenience, Beauty Top Aims in Mademare Home

Convenience and beauty were the top aims in the building of the Mademare Home. The home is designed to be both functional and beautiful, with a focus on convenience and beauty.

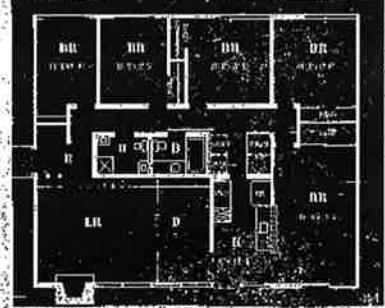
HAPPINESS FOR SALE in the spacious new Bell & Valdez "SUBURBAN"



1,540 square feet of modern living for \$14,450 . . . nothing down, G.I.!

HERE'S ONE of the new Bell & Valdez floor plans. The "Suburban" . . . designed for the large family, with four big bedrooms, two complete baths and large family room. You'll love this home, for it's crisscrossed full of wonderful new ideas to make life more comfortable . . . more enjoyable. It's built with easy-to-care-for materials that can stand up to rugged use. It's designed with a huge "windowwell" running the full width of the house,

bringing the outdoors inside for lighter, more spacious interiors. See it and learn why we say this home takes full advantage of the exciting progress in architecture. Yes, see all the new Bell & Valdez Lake Hills homes today. These homes are priced from \$11,750 to \$15,700 with nothing down to G. I. Leases, F. I. A. terms are also available. Don't miss the "Birth of a City" and the completely furnished Bell & Valdez homes this weekend.



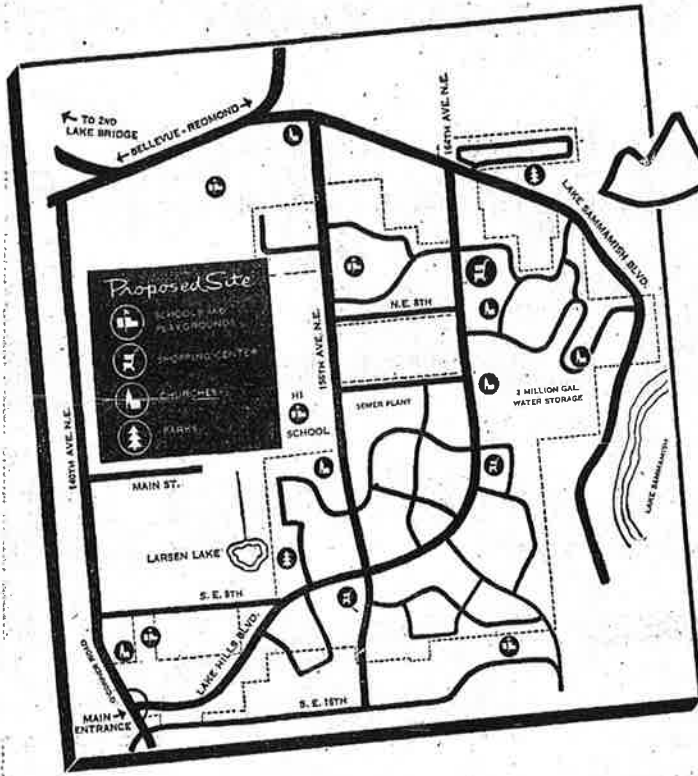
Lake Hills

Suburban Sales, Inc.
Exclusive agents for Bell & Valdez Lake Hills homes. Phone, Chicago 219-1737.

The "SUBURBAN" - 14,450 to \$15,700 - 3 1/2 baths, full, four bedrooms, full bath, large living room, family room, fully equipped, entry hall, circular floor plan, "windowwell" facing rear porch.

45,000 PEOPLE ACCLAIM

Lake Hills



THE BIRTH OF A MODEL CITY!

If you were among the thousands who could hardly get close to Lake Hills last Sunday on the amazing day of its birth, be sure to come out today and see what the shouting was about. Over 45,000 people have seen Lake Hills in the past 7 days.

SIX MODEL HOMES OPEN 10 A. M.-10 P. M. EVERY DAY

Lake Hills is not just a subdivision. It's an entirely new concept in residential planning. It's a model suburban community, a residential city, combining the convenience of urban life with the gracious ease of country living. In Lake Hills you and your family can have the best of two worlds. Lake Hills will contain 4,000 homes with an eventual population of 17,000. See Lake Hills today and join the scores of families who are already eagerly awaiting the completion of their Lake Hills homes. Six model homes are furnished and open for your inspection. Lake Hills homes are priced from \$10,800 to \$15,750.

HERE'S WHAT Lake Hills

OFFERS YOUR FAMILY:



Modern Sewer & Water System
Lake Hills has its own modern sewer system... doing away with inconvenient septic tanks which are standard in most suburban communities. A two million gallon water reservoir insures Lake Hills residents of adequate water supply and pressure.



SCHOOLS
New elementary schools, junior high and a high school will be convenient to the children of every Lake Hills home.



SHOPPING CENTERS
Plans provide for a modern shopping center with all the facilities necessary to serve a community of 17,000 persons. Several neighborhood shopping centers are also proposed.



CONVENIENCE
Your Lake Hills home is away from it all... yet just 20 minutes from downtown Seattle (15 minutes from industrial Seattle)... 15 minutes from Redmond... 10 minutes from Kirkland... 5 minutes from Bellevue and Lake Washington... 12 minutes from Issaquah.

CHURCHES

The spiritual needs of the community will be provided for with churches of several denominations. Sites are being made available for these churches.



PAVED STREETS & PARKWAYS

Beautifully contoured boulevards and wide, winding streets make Lake Hills a pleasant, traffic-safe community. All streets will be paved with curbing and gutters included.



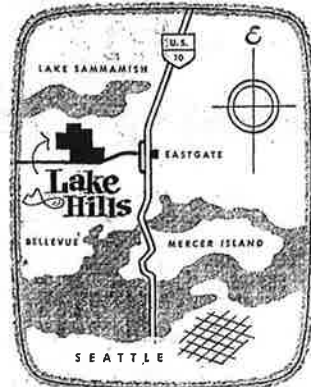
PLAYGROUNDS AND PARKS

Numerous playgrounds will be close to every Lake Hills family as schools are constructed. Large nearby parks offer facilities for picnics and recreation.



A RECREATION WONDERLAND

Whether it be Lake Sammamish or Lake Washington for swimming, boating or fishing; horseback riding on popular Eastside trails; or Eastside golf courses, picnic grounds and other recreation spots; Lake Hills is just minutes away from all! It's less than an hour to mountain lake and stream fishing, skiing and hiking.



DRIVING DIRECTIONS

Drive across the Floating Bridge... follow U. S. 10 four miles past Mercer Island. Turn left (following Lake Hills signs) onto 148th Ave. S. E. Follow signs just 1 1/2 miles to Lake Hills... the Birth of a City!

Date: Tuesday, October 16, 1955 Paper: Seattle Daily Times (Seattle, WA) Page: 14
This is a reproduction of a document from the collection of the National Archives and Records Administration.

Lake Hills Home Wins Contest Award

rk M.
meri-
t, will
the
ast
nitar-
rch.
at S
Thurs-
t.
not, a
esi-
held
sent
ince
He is
of
sachu-
enate
ember
Board
lyoke
Mass.
the
Frank
acific
Berke-
Josiah
King
Berke-
; the
Rev.
Ben
Seattle
Rev.
ure is

Leonard Homes, Inc., co-developer of Lake Hills, was notified today it won second place in the annual National Home Week contest sponsored by American Builders Magazine.

Ed Gavin, editor of the trade magazine, confirmed the award in a message to John C. Reuter, executive secretary of the Seattle Master Builders' Association.

The magazine originated National Home Week.

The Leonard home which won is known as the Westwood. It was on display during the Parade of Homes.

Designed by Ronald R. Campbell, architect, the Westwood contains three bedrooms, one and one-half baths, family and living rooms, brick fireplace and indoor barbecue. Sliding glass doors lead into a patio. It is priced at \$13,800, and contains 1,250 square feet of floor space.

Lake Hills is between Bellevue and Lake Sammamish. Co-builder with Leonard is Bell & Valdez, East Side building firm.

A final check showed a record coffee crop in Costa Rica.

Egypt
Russ
CAIR
Ambass
ferred
Premier
commen
Aske
were ti
ferred
Egypt,
heard

Handwritten scribble or signature.

[No Headline]

Date: 1955-11-06; Paper: Seattle Daily Times

This entire product and/or portions thereof are copyrighted by NewsBank and/or the American Antiquarian Society, 2004.

44 The Seattle Times Sunday, November 6, 1955

Suburban Comfort in Lake Hills Home

3 Bedrooms In One-Level House

By MARGERY R. PHILLIPS

Just when we think we've seen every way possible to arrange living room, dining space, bedrooms and baths in a one-level structure our attention is called to another twist and turn of ingenious architects and builders to provide more comfort, more convenience, thus happier living for owners seeking moderately priced homes.

Today's open house in Lake Hills designed by John Anderson and Robert Hobbie, architects, and constructed by Bell & Valdez, builder, has a versatile arrangement of the 1,330 square feet allocated to one-level living.

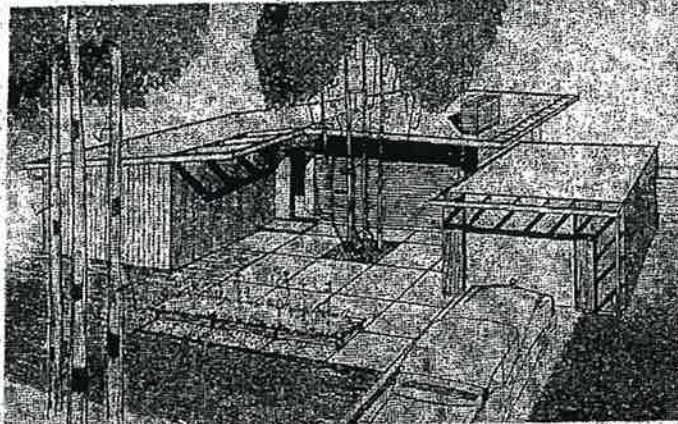
It is interesting to note the compact arrangement of the utility core which separates living area from sleeping area. This inside space has been put to good use allowing all living areas a maximum of natural light. Back-to-back are family bath and powder room, wisely planned for the family that needs three or four bedrooms. On one side of the half-bath and behind sliding panels is the heating unit; centrally situated, smartly vented through peg-board panel above the guest closet. The entry at one end of the core and the open utility space at the other provide excellent circulation.

Pleasing Courtyard

Now that we have seen in plan how the rooms are arranged let us note the details that make them so livable. At once, it's easy to see that this home is planned for parents with growing children or for an older couple that enjoys informal living. The projection of the garage and of the master bedroom form a pleasant courtyard and inviting approach to the house. "Whispering bamboo," evergreen shrubs and ground cover would give an easy-to-maintain landscape effect. The exterior finish of vertical cedar is painted gray-green and trimmed with brown insets and beams. A bright-yellow door almost says "Do come in."

The slate-floored entry has a generous coat closet for family and guests.

Living and dining are planned together, with the outdoor living and dining areas viewed through big windows; and reached through sliding glass doors. The fireplace is detailed neatly with red brick surrounding the opening and



OPEN HOUSE: Lake Hills is the suburban setting for today's open house featuring the newest in compact planning for a one-level home. Included in the 1,330 square feet of living space are living-dining area, kitchen with snack space, three bedrooms and a family room (or fourth bedroom) and a utility core containing family bath, powder room, laundry alcove. John Anderson and Robert Hobbie are the architects, Bell & Valdez, the builder. Open-house hours are from 9 a. m. to 5 p. m.

DRIVING DIRECTIONS

To reach Lake Hills drive across the Lake Washington Floating Bridge, follow U. S. 10 three miles east of Mercer Island, turn left into 148th Avenue Southeast and follow open-house signs for one and one-half miles.

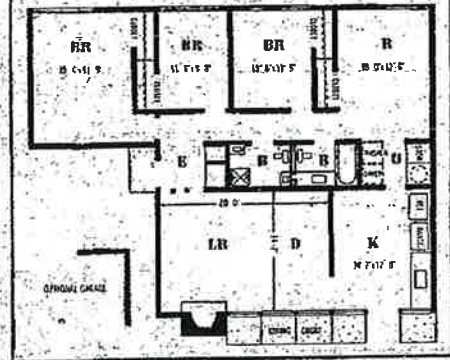
decorative oak panels in Savannah finish are set into a beveled frame.

Changes Are Possible

As the seasons change furniture may be grouped in a variety of ways. Dining is planned at one end of the room with a drop-leaf table placed in front of patio windows in the spring and summer, or set into the protected corner in fall and winter. Walls are beige, the partial wall between dining space and kitchen is oak-paneled.

From the dining space we step into a roomy kitchen planned with lots of informal eating space for growing children. The end wall contains refrigerator, table top range and sink with storage units above this work counter. The sink, although on a windowless wall, is well lighted by a fixed-glass panel facing the patio. Planning desk and built-in oven are on the inside wall. Space against a peg-board panel has been assigned as informal eating area. The peg-board wall is a wonderful place to display the children's drawings, post cards of the day, make designs with colorful yarn and golf tees. The walls are light green, cabinets of sên hardwood, floors of rust-toned tile.

From the kitchen we step



through the utility room—automatic appliances on one side, storage on the other—to the family room. This is the multipurpose room where many family activities take place. Walls are a warm beige. A closet can be used for games or become a wardrobe for garments; if this room is used as a fourth bedroom.

Two bedrooms are average size, each with a window wall and a good-sized wardrobe. One is in yellow, the other in soft green. The parents' bedroom, scaled for twin beds, is generous in proportions and also features a window wall and a wide wardrobe unit. A beige background allows a number of colorful or subdued color schemes.

Lake Hills is a planned community of some 17,000 persons when completed. Parkway-type boulevards and wide, winding streets make it a roomy, traffic-safe community with recreation points such as Lake Sammamish to the east, Lake

Washington to the west, golf courses, fishing, hiking, skiing, swimming and boating just minutes away.

From U. S. Highway 10 at 148th Avenue Southeast (three miles east of Mercer Island, follow Lake Hills signs to the open house, open from 9 a. m. to 5 p. m.



CC

A Seattle about Bic 3 o'clock way tion. story serve perso The full and North Street opera Mc and izatic ect. Plg draw archi be at provi a soc age) L On a lot tion dinin be us to m persc will i a lar Th clu' louni third for 2 a loc Th comm firma cializ tor's ment All Engi R. surar will Seatt city o'clock Trans will Auto)

SEE: 605 - 1637 DAVE 16210 - SE BTH.

Second Division Home by Northwest Firm

Date: Sunday, November 6, 1955 Paper: Seattle Daily Times (Seattle, WA) Page: 43
This entire product and/or portions thereof are copyrighted by NewsBank and/or the American Antiquarian Society, 2004.

CLICK'S property-management department negotiated the leases.

Homes Opened For Inspection At Lake Hills

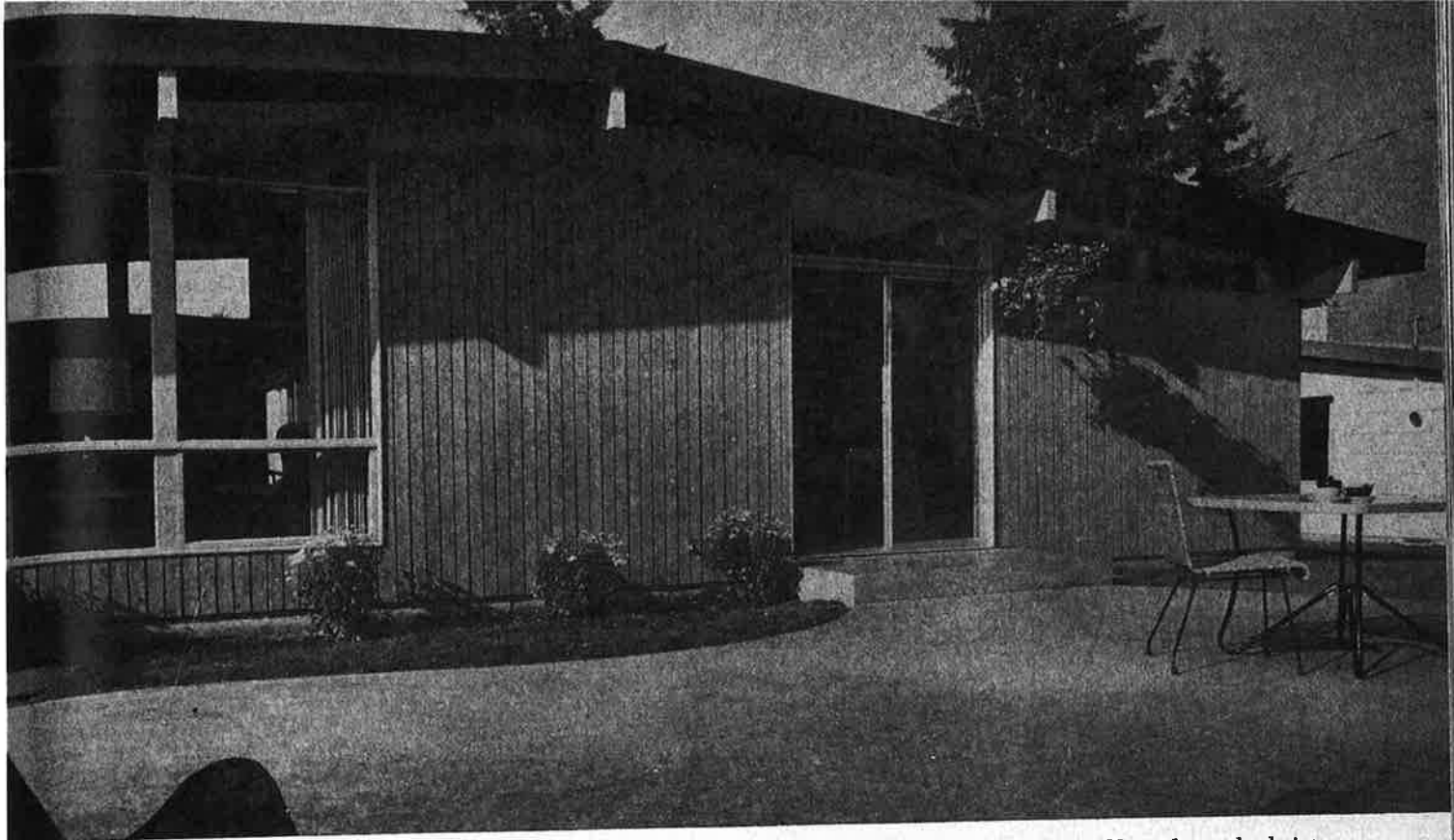
Two new contemporary homes, designed by Ronald R. Campbell, architect, will be open for public inspection today at the Leonard Homes, Inc., development at Lake Hills.

Both models have one-and-one-half baths, large closets, inside and outside storage facilities and living rooms with cathedral ceilings and large picture windows. An indoor barbecue is built into a full brick wall.

The houses, with more than 1,200 square feet of floor space, are priced at \$13,800. Nothing-down, G. I., and F. H. A. terms are available.

The houses are named the Skylark and the Cedarvue.

37



STRONG, LOW ROOFLINE is feature of the "Westwood", contest's second prize winner. Projecting beam ends indi-

cate post-and-beam construction. Glass doors lead into family room; window at left is in living room.

This was labeled "best buy"



2ND PRIZE

Kinney Leonard
Seattle, Washington

Here's how judges rated this house

DESIGN	82.5
FLOOR PLAN	87.5
SALES APPEAL	87.5
CONSTRUCTION	80
EQUIPMENT	72.5
PROMOTION	81

BALLOON POODLES were given away to all who visited the project; were credited with being a big drawing card by the builders. All the kids wanted them, and as shown above, made their parents stand in line to obtain them. ▶

This house was a strong contender from the start; when the judges saw the price tag on it—\$13,800—they quickly elevated it to second place.

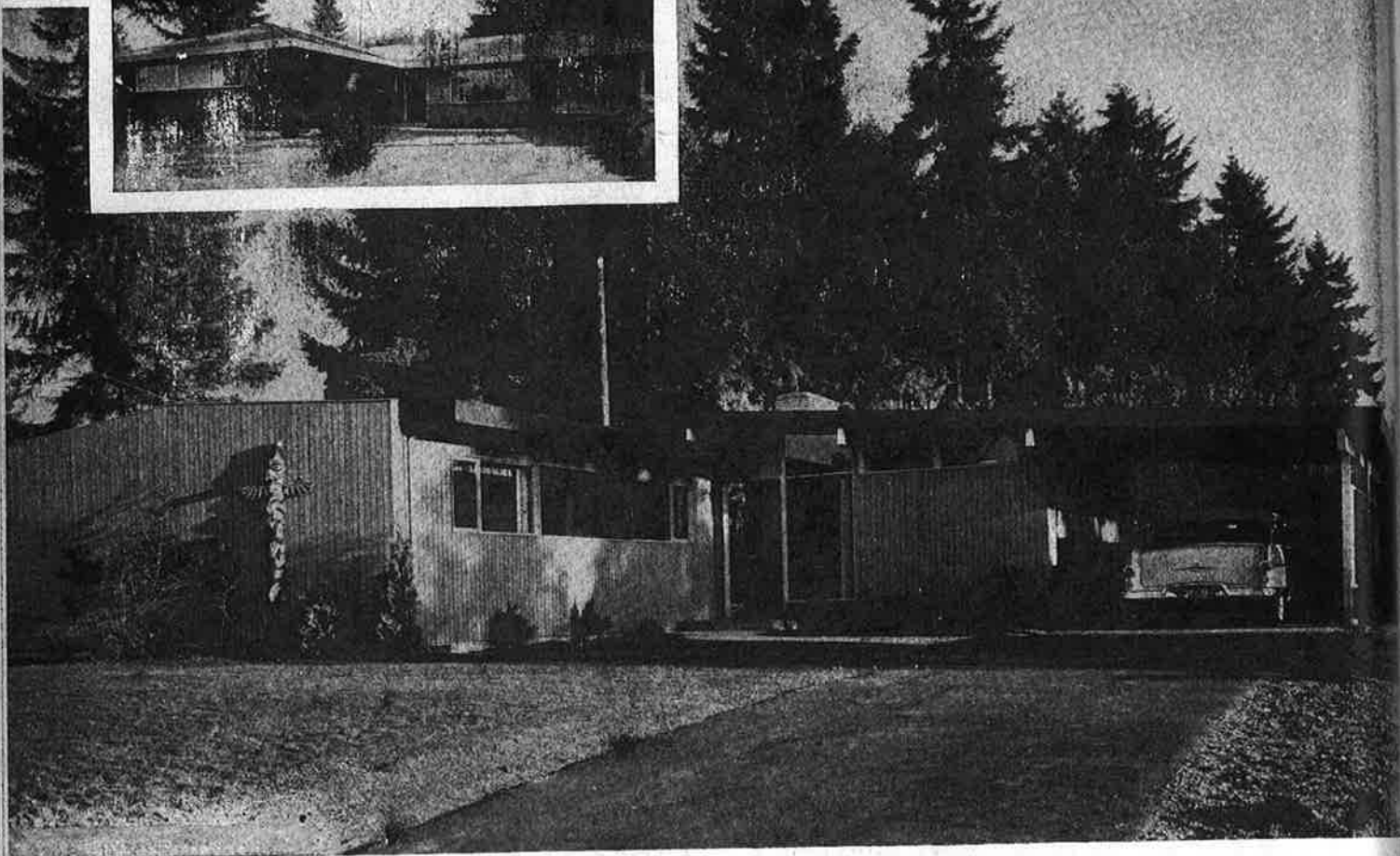
The "Westwood" is part of Lake Hills, a community in Bellevue, Washington, developed jointly by Leonard, and another builder, Bell & Valdez, and expected eventually to include some 4000 homes. The Pacific Northwest has been showing a fondness for contemporary styling, so architect Ronald Campbell made the "Westwood" strikingly modern. This was a strong reason for 100,000 people visiting the project during National Home Week, and for eighty-three of them coming away full fledged home owners.



HERE'S WHY IT WAS A BARGAIN ▶



MODERN VERSION was most popular, but for the more conservative, the model shown in inset was also available with the same floor plan and at the same price.



THIS HOUSE WAS LABELED BEST BUY continued

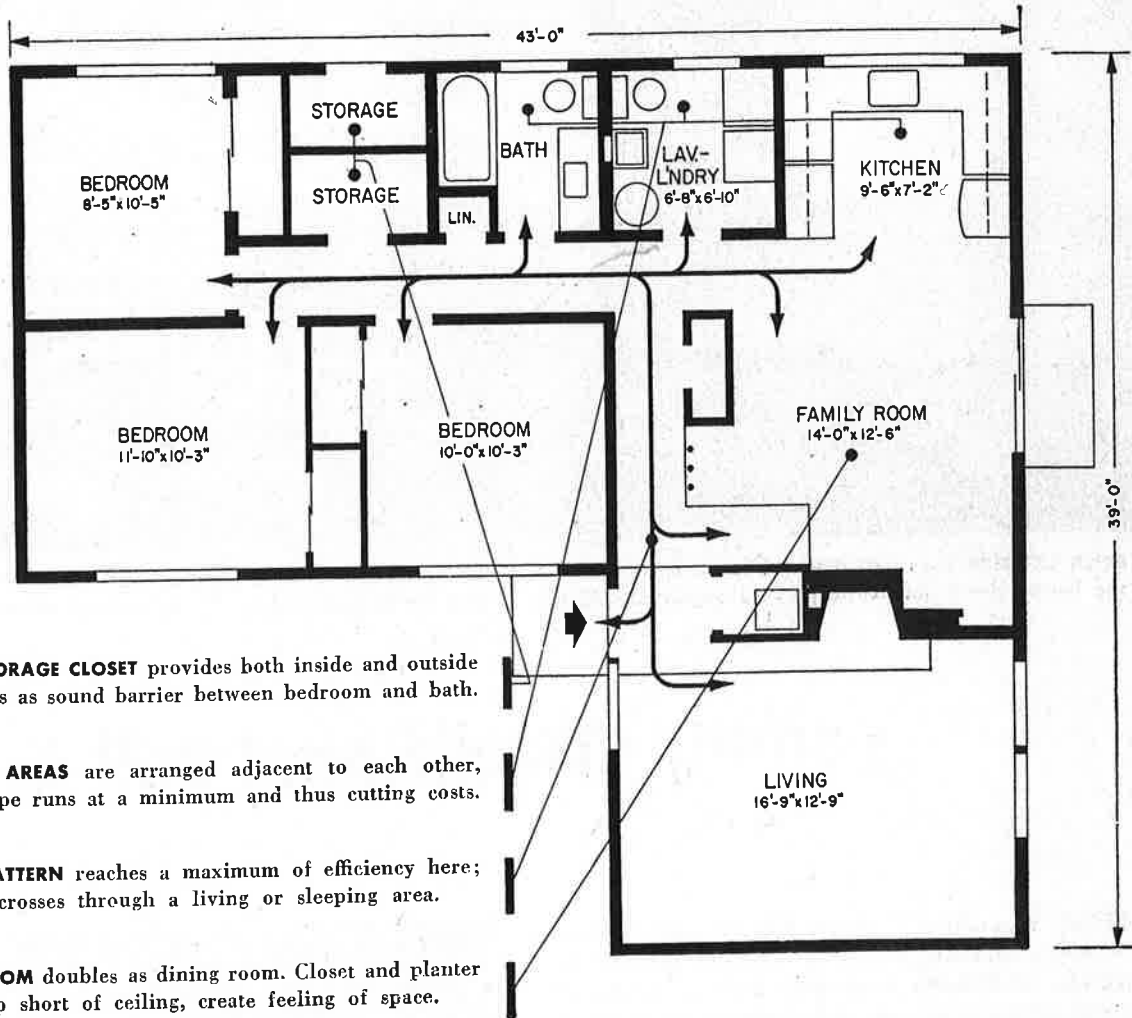
Outside, good looks

The judges agreed that the "Westwood" was an unusually attractive house, but they were even more enthusiastic about the floor plan, shown at the top of the next page. They liked these features:

- The dead-end living room, completely apart from the bedroom wing. Late entertaining would not keep the children awake, with this arrangement.
- The family room, placed where it can do the most good in a small house—beside the kitchen. During the day it acts as a playroom, supervised from the kitchen; at meals, it becomes a roomy dining room.
- The kitchen—compact, well designed, equipped with plenty of cabinets. A double sink eases the chore of dishwashing. Appliances are purchased as extras, but their cost can be included in the regular monthly mortgage payments.
- The half bath, which doubles as a laundry and utility room. Clothes washing can be done out of the kitchen, but at no great distance from it.

- The full bath, with a mahogany vanity, topped by a big plate glass mirror. It is backed up to the half bath to shorten plumbing lines, reduce cost.
- The double storage closet, accessible from both outside and inside, and situated between bath and bedroom where it provides extra sound insulation.
- The bedrooms—good sized, and provided with large sliding door closets.
- The corridor—long, but not too long, making possible the ideal traffic circulation. All major areas of the house can be reached independently.

Products featured—Westinghouse appliances; Armstrong floor coverings; American Standard plumbing fixtures; Sky Vue Aluminum sliding doors; United States Gypsum drywall; Roscoe Contour-Aire furnace; Basco tub enclosures; Feltrock wool insulation; Weiser hardware; Lamanart plastic drainboard; Trade Wind exhaust fan; Durwood Narrow Line windows; Formica counter tops.



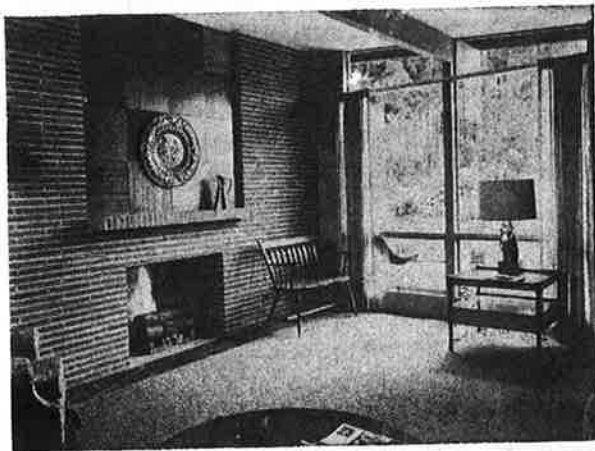
DOUBLE STORAGE CLOSET provides both inside and outside storage, acts as sound barrier between bedroom and bath.

PLUMBING AREAS are arranged adjacent to each other, keeping pipe runs at a minimum and thus cutting costs.

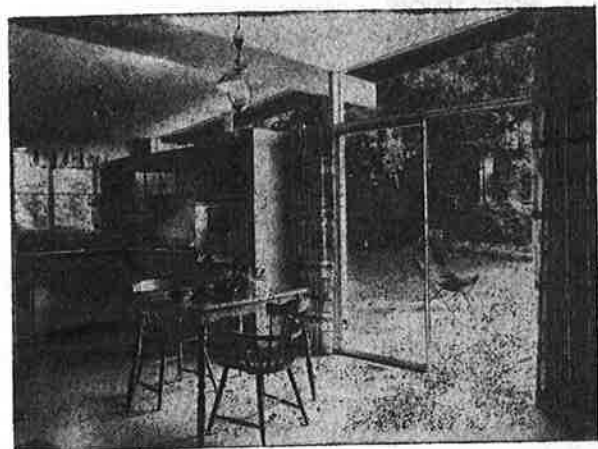
TRAFFIC PATTERN reaches a maximum of efficiency here; no traffic crosses through a living or sleeping area.

FAMILY ROOM doubles as dining room. Closet and planter at left stop short of ceiling, create feeling of space.

... inside, good living



LIVING ROOM, showing the fireplace and the attractive use of brick and wood paneling on the wall. The furnace is in a closet behind the wall at far left, where it can use a flue in the existing chimney.



THE KITCHEN, as seen from the family room. The sliding glass doors at the right open onto the terrace. Wall-oven and counter range are not included in purchase price, but their cost can be added to mortgage payments.

HIGHLIGHTS: "Lake Hills" Church.

SEE SEATTLE'S Spring Festival of Homes

It's America's finest display of outstanding
 model homes... completely furnished
 and landscaped is **EXHIBIT**

These are smart homes for all the eye to see. Smart, but not snooty. They are built by the best of Seattle and around the lake. They are built for the modern man and woman. They are built to please both in both appearance and common sense. Yes, it's America's greatest festival of model homes.



Modern Sewer System

The new sewer system is a modern system... completely furnished and landscaped is **EXHIBIT**

Islands - The beautiful island...
Shopping Centers - The shopping center...
Churches - The church... **EXHIBIT**

PRICED FROM \$11,225 TO \$18,000

AS LOW AS \$225 DOWN - GI

OPEN HOUSE 9 A.M. TO 9 P.M.

Lake Hills

DRIVING DIRECTIONS

Drive across the floating bridge on the Sunset Highway...
 For more information call Gibson 249 or Gibson 6127



L E F T

HIGHLIGHTS: "Lake Hills": Church.

find



LEONARD "WOODLANDER"

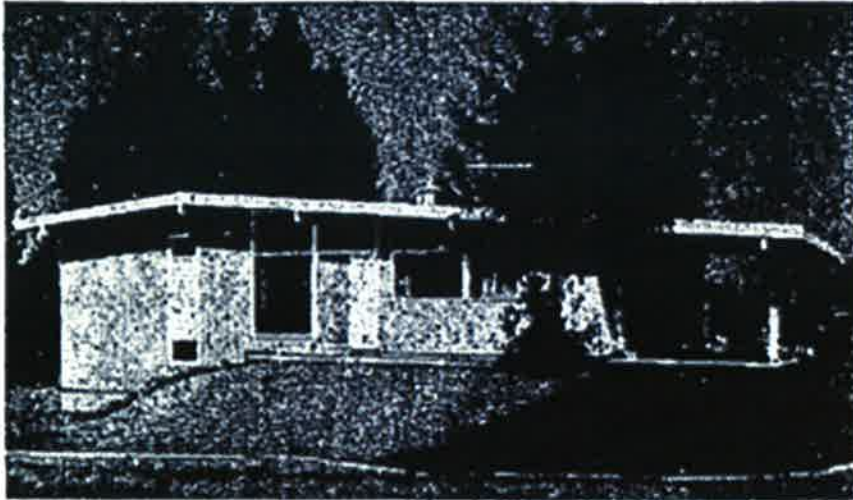


BELL and VALDEZ "MODERNAIRE"

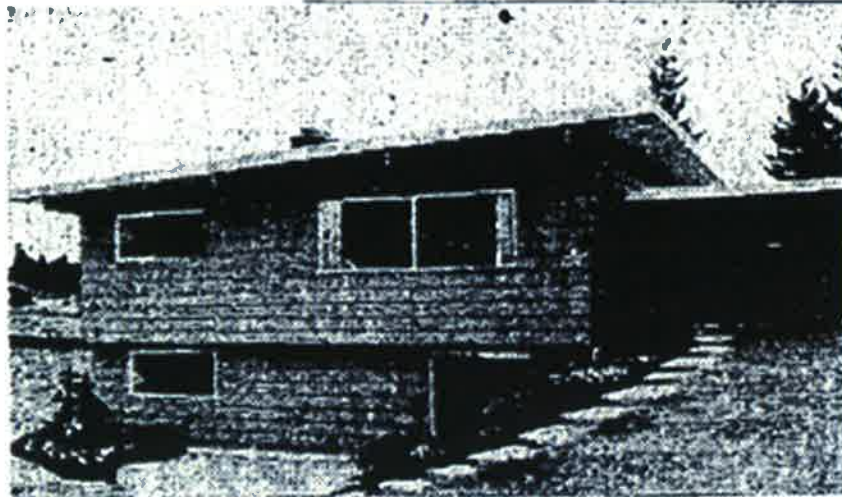
HIGHLIGHTS:  "Lake Hills": Church.

find

BELL and VALDEZ "SUBURBAN"



LEONARD "EVERGREEN"



BELL and VALDEZ "ALL-AMERICAN"

←
L
E
F
T
←

HIGHLIGHTS: "Lake Hills": Church.

find



LEONARD "TRI-LANDER"



BELL and VALDEZ "SUBURBAN"

LEFT

HIGHLIGHTS:  "Lake Hills": Church.

find



LEONARD "WESTWOOD"



BELL and VALDEZ "TRI-VUE"

←
L
E
F
T
←

Robinswood Home Stresses Comfort

Arrangement Features Privacy

By MARGERY R. PHILLIPS
Robinswood is a pretty East-side suburban community, with tall trees gracing the building sites and wide paved streets leading to the 230 building sites.

The builder, Gregg Wilson and Alton Phillips, have taken great care in developing a community that will give its residents gracious and comfort.

DRIVING INSTRUCTIONS
To reach Robinswood, drive across the Lake Washington Floating Bridge and follow the Sunset Highway to 18th Avenue Southeast. Turn north and follow the directional signs on mile to the Robinswood entrance.

able living and a well-founded pride in home-ownership in Robinswood.

The architect, Fred Rogers, has presented a plan which meets the requirements of comfortable, suburban living. Access to outdoor areas is well thought out, and interior traffic patterns allow privacy for the growing family.

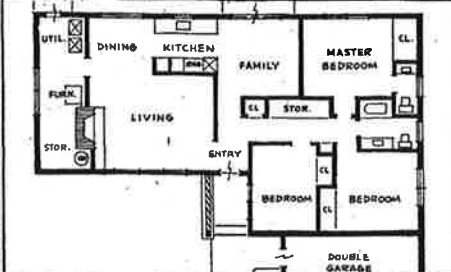
Entry Convenient
For example, the entry is conveniently placed so that living room, family room, bedroom wing and garage may be reached without interruption of any one activity area. The direct access from the entrance door to the family room and into the garden area is excellent where children run freely about.

The open plan combines living area, dining space, kitchen and family room. Part walls and screens define each area without enclosing it in a comparatively small space. It would be the case if each room were walled in.

The living area has two centers of interest—the large window that opens onto the entrance court and the sandstone fireplace with raised hearth.



OPEN HOUSE: Robinswood is the setting for today's open house, designed by Fred Rogers, architect, and constructed by Gregg Wilson and Alton Phillips. The house, of 1,380 square feet of living area plus 440 square feet of included garage, is nearing completion and will be open today from 10 to 6 o'clock. Included in the open plan is the popular family room opening onto the garden area.



The dining space has a large window opening onto the garden. Walls are a neutral tone, with mahogany woodwork bleached to a matching tone. To one side of the dining space a door opens into a combination utility-storage-laundry room.

In Pullman style. A part wall separates living area from the food-preparation center. Westinghouse appliances are set into birch cabinets in Pullman style. Sink, dishwasher and disposal are in the window wall. Built in refrigerator and oven and counter-top range are on the inside wall.

The kitchen opens into the family room—the informal area where children's play and family activities will be carried on in winter and flow, through sliding glass doors, into the garden in warm weather.

The bedroom passage way has storage units on one side adequate for this one-level house. Three bedrooms are well planned for the growing family. One room, with window wall and wardrobe built, is finished in soft green. The second and third bedrooms are painted a soft rose. Yellow predominates in fixtures and wall tones in the family bath. The large master bedroom, with generous wardrobe space, has light-beige walls. The adjoining half-bath is done in pink. The exterior of the house combines vertical and horizontal cedar siding, with brick planters. A covered walk leads to the two-automobile garage. The house, nearing completion, will be open from 10 to 6 o'clock.

Cleaning Plant, Business Site, Apartments Sold

Three commercial sales, totaling more than \$100,000 were completed last week for Henry Broderick, Inc., Jenellea Hensh, commercial sales manager, announced.

The sales included a dry-cleaning plant, a commercial site and an apartment.

Strom's Custom Cleaning Plant, at 1600 Jackson St., was sold to a national concern and will be converted into headquarters offices. It was sold for \$35,000.

Art Strom, president of the dry-cleaning establishment, said his company intends to establish six or seven small cleaning services in the Seattle area. The firm has been in business here since 1932.

A vacant commercial property at Sixth Avenue North and Ray Street was sold for \$40,000 to an investor for Marla A. Davis. A building is planned on the property. Jerry Ballantine conducted the negotiations.

Mc. and Mrs. W. P. Larsen purchased an eight-unit apartment house at 218 Belmont Ave. N. from J. A. Roberts for \$30,000. Roy DeLain conducted the sale.

Builder Groups To Hold Parley In Longview

Representatives of the Seattle Master Builders' Association will attend a regional conference of builder groups at Longview, Spokane.

Frank Chase, general manager for Rhodes 10c Stores, said the new store will be equipped with the latest designs in store fixtures and will be entirely a self-service operation. The store will feature a wide variety of merchandise, including food, goods and hardware.

Plans call for completion of the structure early in November. The variety store was founded in 1900 by the late W. L. Rhodes. The company operates five stores in the Seattle area, with the main store at



NEARING COMPLETION: This 26-unit apartment house, built and owned by A. J. Mully, is nearing completion at 3109 Ave. Ken Way. George Bolotin was the architect.

New Apartments Built on Avalon Way

A \$200,000 three-story and a two-story apartment building, is nearing completion at 3109 Ave. Ken Way.

The owner is A. J. Mully, who also is the general contractor. The 26 units will rent for around \$75 a month.

Designed by George Bolotin, architect, the apartment house is of fireproof reinforced-concrete and masonry construction. Built on a rise, the units will have a view of Elliott Bay and downtown Seattle.

The living rooms contain fireproof window walls. Individual entrances are from balconies in the rear, so planned to preserve the privacy of tenants.

The apartment house, the seventh built by Mully, will have baseboard electric heating, with individual thermostat control. Laundry facilities are provided on each floor. Ceramic tile is used in the bathrooms and plastic counters in the kitchens. Cabinets are of birch.

Pioneer Firm to Build Store in New Community Center

Rhodes 10c Store in a new community center is now under construction at 12th and East 17th St., in Lake City. It was announced yesterday.

Newly built adjacent stores are occupied by Albertson's Inc., food store, and the Marvel Morgan Drug store.

The suburban center is being developed by the Pioneer Investment Co., Walla Walla, W. Halvorson, Inc., is the general contractor. The architect for the project is C. C. Tolleson of E. D. McCarthy & Associates, Spokane.

Frank Chase, general manager for Rhodes 10c Stores, said the new store will be equipped with the latest designs in store fixtures and will be entirely a self-service operation. The store will feature a wide variety of merchandise, including food, goods and hardware.

Plans call for completion of the structure early in November. The variety store was founded in 1900 by the late W. L. Rhodes. The company operates five stores in the Seattle area, with the main store at

2 Subdivisions To Open Today In Bellevue Area

Two new residential subdivisions—Emerald Hills and Emerald Valley—will be open today. W. Lennox Scott, sales manager for John L. Scott, Realtor, announced.

The developments are adjacent to the new Glendale Golf course in Bellevue. The wooded tracts overlook the fairways and greens and offer a panoramic view of the country and mountains.

Both subdivisions will have paved streets, storm sewers and will meet all requirements of the Federal Housing Administration as the Veterans Administration for insurance purposes, said Scott.

Building restrictions will require a minimum of 1,500 square feet of floor space in single-level homes on the main floor in houses with basements. House plans are subject to the approval of an architectural committee.

Construction will begin soon in Emerald Hills, where prices will range from \$18,000 to \$35,000. Rates are offered to individual buyers or contractors, from \$3,000 each.

Scott said contemporary or modern architecture probably will predominate according to the demand. Lot purchasers may employ their own contractors.

Lots ranging from one half to three fourths of an acre in Emerald Valley are priced at \$8,500. A stream runs through many of the lots. Restrictions are more severe and houses will be larger and more expensive than in the Hills development.

The subdivisions, comprising 100 lots, are being developed by the Highland Development Co., with John L. Scott, Realtor, as adviser and general contractor. Carl F. Reith of the Scott office has been appointed tract manager.

New Judge To Sentence Officials

ST. LOUIS, July 14.—U.S. Federal District Judge Connor H. Nordbye of Minneapolis will sentence two former Truman administration officials convicted in a conspiracy to defraud the government.

Judge Nordbye was named yesterday to replace the late Federal District Judge Hubert M. Hulen on the case of Matthew J. Connelly, who was Mr. Truman's appointment secretary, and James Caudle, former head of the tax division of the Justice Department.

The judge ruled that a gunshot wound. A coroner's jury was unable to determine whether he killed himself accidentally or deliberately.

Real-Estate Firm In Bellevue In New Hands

The Don Peters Land Office, Bellevue, is operating under new management.

A long-term agreement between Don and Marjorie Peters, who have operated the business 15 years, and three other Bellevue real-estate men was completed last week.

The new operators are Bill Lynch, Alex Smith and Ray Smith. Lynch, broker for the new organization, said the company will continue to operate under its present name.

Smith, vice president, has been in the real-estate business in Bellevue two years.

Smith, vice president and broker, has been in the real estate field many years.

Lynch is secretary-treasurer. He is a former associate broker for the George Lister Co.



UNUSUAL DESIGN: This modernistic design of the nationally known architectural firm of Walton Beckert & Associates.

\$750,000 Store Being Built in Burien

A new \$750,000 store for Tradewell Stores, Inc. is being built in Burien. L. E. Henrie, the firm's general manager, announced yesterday.

The store will be between Southwest 150th and 152nd Streets, adjacent to the county playground at Fourth Avenue Southwest.

M. L. Bean, Tradewell president, said the store will be ready for occupancy about January.

Jennett & Forbes is the general contractor. The Selo Electric Co. and the West Coast Heating & Plumbing Co. hold the electrical and mechanical contracts.

Parking for 300 automobiles will be provided. The roof design, will be of thin-shell concrete.

The store will contain 23,000 square feet of floor space. A series of new departures in materials, color treatment and general layout will be featured.

A Van de Kamp bakery and large housewares and toiletries departments will be included.



OPEN HOUSE: This new Queen Villa Apartment building at 219 Queen Anne Ave. will be open for inspection today. Joseph A. Butcher is the owner.

Queen Villa Apartments to Be Open Today

Open house will be held today in the new Queen Villa Apartments, 219 Queen Anne Ave., Joseph A. Butcher, owner, announced.

Visitors will be welcomed from noon until 9 o'clock. The 22-unit structure, with apartments on three levels, is of fireproof reinforced concrete and masonry construction. One unit will be furnished for the occupant.

Floors to ceiling windows are provided in the living rooms. Walls are plastered with occasional masonry textured wall for contrast.

Kitchen and bathroom fans, ceramic tile baths, and overhead infrared sunlamps in the bathrooms are some features. Individual thermostat-controlled heat in living rooms and bedrooms, built-in telephones and television conduits and all-electric kitchens are included.

Storage, power and automatic laundry facilities are in the lower level.

Raymond H. Peck and John C. O'Brien, architects, have designed separate entrances off cantilevered open balconies for each unit. There will be three bachelor and 18 one-bedroom units and one two-bedroom unit.

5,755 Homes Are Financed By Housing Agency in Year

The Federal Housing Administration insured 5,755 home mortgages valued at \$63,283,000 in the Seattle metropolitan area in the past 12 months, C. W. Brown, F. H. A. director, reported yesterday.

The average new home was appraised at \$11,561, had an average of 2.3 rooms, including 2.8 bedrooms. About 91.1 per cent of the total properties had garage facilities of some type.

The average owner had a monthly income of \$243.18, and obtained a mortgage loan of \$1,255 payable over a period of 24.7 years.

The monthly mortgage payment averaged \$81.47. Estimated maintenance costs and operating expenses, together with the mortgage payment represented an average of 21.3 per cent of the family's monthly income.

There is a service station for every 236 automobiles, trucks and buses in the United States. The figures apply only to newly built homes.

Sir Galahad Apartments Sold to Investor

The sale of the three-story, Sir Galahad Apartments, 903 Bellevue Place, to a Seattle investor, was reported yesterday by West & Wheeler Associates, Inc. The building was held for \$200,000.

Mr. and Mrs. Ted Harnes were the sellers. The building, constructed about 1930, contains 19 one- and two-bedroom units. Tenant parking facilities are in the basement.

Negotiations in the sale were handled by Mrs. Fisher Ayer and Anker S. Haugen, of West & Wheeler.

SEE THE Bell & Valdez TRI-VUE

IN **Lake Hills**

a 1500 sq. ft. Tri-Level home \$287 DOWN G.I.

all models open daily 9 a.m. to 9 p.m.

No future assessments ALL SEWERS IN!

suburban sales, inc. Gibson 2419

DRIVING DIRECTIONS—Drive across the floating bridge on the Sunset Highway (U. S. 10). Turn left three miles past Mercer Island at Eastgate. Follow the signs to Lake View.

Mr. Horton Brown announces completion of two beautiful contemporary homes epitomizing the finest qualities of suburban living.

"THE SEQUOIA"

Two thousand square feet of grace and function—refreshingly, delightfully, different.

\$19,500

"THE MADRONA"

Exquisitely detailed throughout twenty-six hundred square feet of custom construction.

\$46,500

These two homes characterize the best in modern architecture, gracefully situated among trees and bridle trails overlooking mountains, lake and city.

Shown by appointment only.

Phone Van Dyke 3621 Bellevue

Date: Sunday, December 23, 1956 Paper: Seattle Daily Times (Seattle, WA) Page: 35

more of these needed additional funds . . ."

2 Lake Hills Model Homes Win Awards

Two model homes in Lake Hills, East Side residential community, have been named in the December issue of American Builder magazine as among the 23 best model homes in the country.

Homes by Leonard Homes, Inc., and Bell & Valdez, co-builders of Lake Hills, placed among the winners, selected by a panel of judges.

The winning homes reflect preferences noted in the recent report on the Women's Congress on Housing, the magazine said.

The "Skylark" by Leonard Homes won an award in the "under \$16,000" classification. The home was designed by Ronald R. Campbell.

The Bell & Valdez home, the "Olympian," won a special award in the \$16,000 bracket. It was designed by John Anderson and Robert Hobbie, Bell & Valdez architectural engineers.

More than 50 floor plans now are offered in Lake Hills. Homes range from \$13,000 to \$23,000.

Restaurant On Fourth Avenue

It will 1
noon unti

Twelve
built at P
more are

The ho
rooms, fu
sign, bea
rooms an
place wall

The dev
east 24th
Avenue S
Bellevue.
from \$12
are availa
G. I. fina

Realtor On Col

Realtor:
conventio
Associatio
Boards in
were told
money sit
to chan
year.

This wa
by Mrs. J
Lynnwood
conventio
"realtor c

More m
be expect
on Feder
tration an
more flex
told.

Weath G.I.'s

[No Headline]

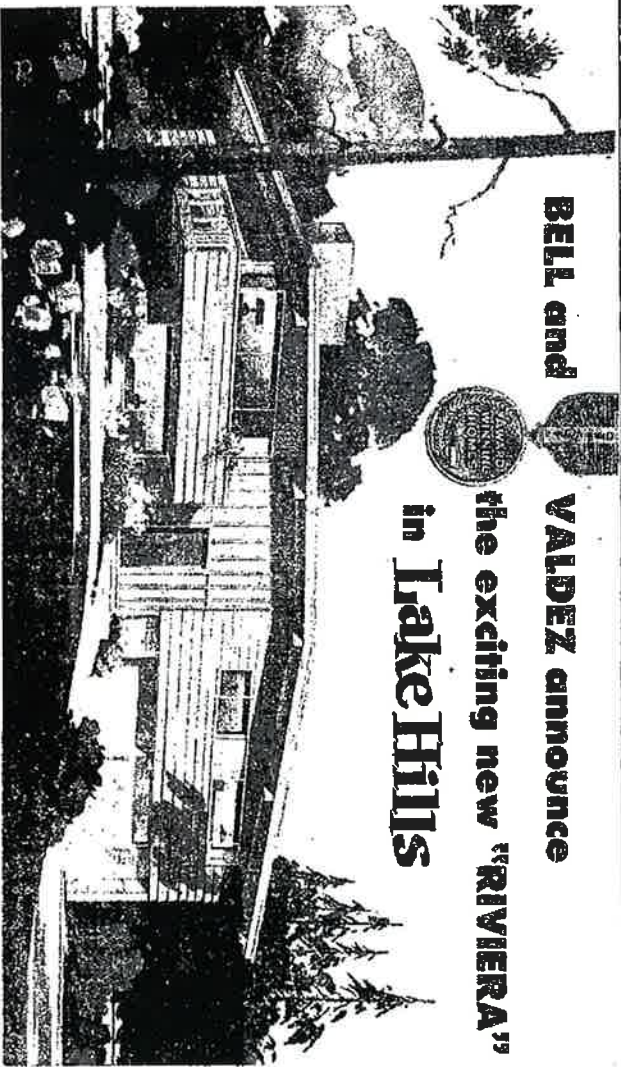
Date: 1957-03-31; Paper: Seattle Daily Times

This entire product and/or portions thereof are copyrighted by NewsBank and/or the American Antiquarian Society, 2004.

The United States Savings Bank, according to the report, has been authorized to sell the stock of the bank to the Federal Reserve Bank of New York.

Call Paul Ryland for information. EASTSIDE HOMES, Inc., Porter 0330

1041 1/2 or 12th St., S.W. - Eastside Peninsula Telephone HU. 2721



BELL and VALDEZ announce the exciting new 'RIVIERA' in Lake Hills

Open Today -- 1725 sq. ft. -- Minimum Down G. I.!

General Electric Kitchen . . . The Accents on Color!

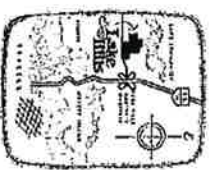
Wait until you see the "Riviera," bristling with modern General Electric kitchen appliances. Here is the latest and finest in modern home appliances . . . and designed to blend in with the design of the home. The "Riviera" features the "Porter" stainless steel General Electric appliances: complete top range and built-in oven, automatic dishwasher, garbage disposal, built-in refrigerator-freezer and automatic dishwasher and dryer.

Meet the "Riviera" -- a precision new two level home that is liberally loaded with the features you want in your new home: 3 bedrooms, second bath, off master bedroom, two fireplaces, recreation room, double garage, eating space in the kitchen, separate dining area, beam ceiling, split level entry, sleep area, space for third bath.

LOWEST G. I. AND F. H. A. TERMS
Priced from \$15,885 (including lot) the "Riviera" is available at ASSOLUTE MINIMUM G. I. and F. H. A. terms. Other 3 and 4 bedroom homes built 1 1/2 units now available for as little as \$300 DOWN G. I.

FURNISHED MODEL HOMES OPEN UNTIL 9 P. M. DAILY

EHI eastside homes, Inc. Phone PORTER 0330 or GIBSON 2419



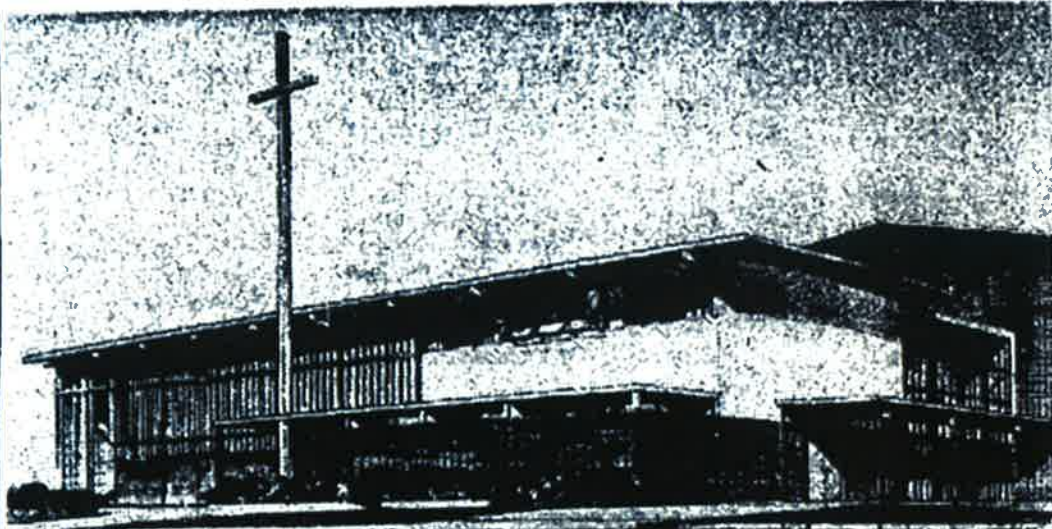
This shows the building site. Color photo shows the house. You can see the lake and the surrounding area. The lake is 1/2 mile long and 1/4 mile wide.

SEC 16046

564 TH AVE

HIGHLIGHTS: "Lake Hills" Church.

find



LAKE HILLS PLANS: The American Lutheran Church today announced plans to build this new church in Lake Hills. The

church is seeking a pastor to organize the congregation. W. G. Brust is the architect. A total of \$82,000 has been allocated.

Lutheran Church Is Planned

By LANE SMITH

A Lutheran church will be built in Lake Hills for a congregation that does not exist, it was announced today.

The Rev. L. Myron Lindblom, chairman of the Home Missions Committee of the Northwestern District of the American Lutheran Church, said the church would be built at Lake Hills Boulevard and 159th Place Southeast.

A call has been extended to the Rev. Charles E. Schmitz, Phoenix, Ariz., to serve as or-

A total of \$82,000 has been set aside for the Lake Hills congregation. This included \$15,000 for a site and \$17,000 for a parsonage. Mr. Lindblom said \$35,000 of the amount has been earmarked for the first unit of the church and \$15,000 has been reserved as a subsidy to aid the young congregation in meeting budgetary items.

The church, designed by W. G. Brust, will seat 160 persons

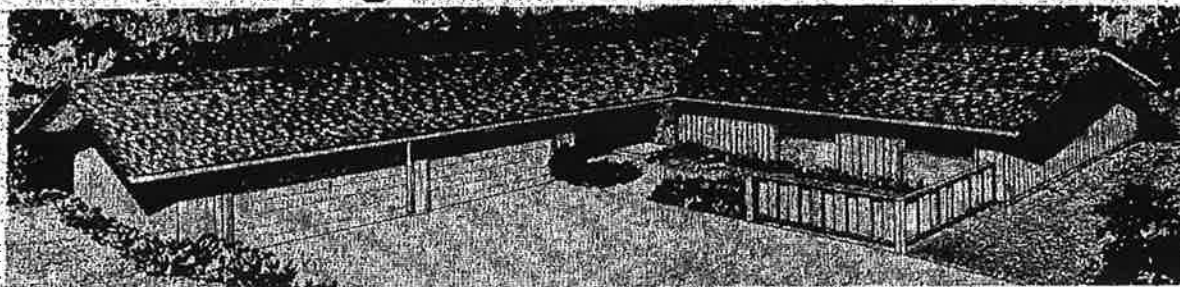
in the nave and an additional 120 in an overflow area which also can be used for education and fellowship purposes. Classroom, office and kitchen facilities also will be included.

Construction will be started as soon as a full-time pastor arrives. Mr. Lindblom said inquiries about forming the congregation could be directed to him at the Bethlehem Lutheran Church, 3750 Angeline St.

DOWN

24 The Seattle Times Sunday, May 5, 1957

New Building Ideas in Lake Hills Home



OPEN HOUSE: Lake Hills is the setting for today's open house of 1,450 square feet, planned on one level by Ronald R. Campbell, architect, and constructed by Leonard Homes, Inc.

Open-house hours today are from 10 a. m. to 8 p. m. at 15644 Lake Hills Boulevard. Many interesting building features are noted in the home.

3 Bedrooms In One-Level House

By MARGERY R. PHILLIPS

A new trend in one-floor house-planning in the 1,500-square-foot (more or less) class is the arrangement of a living room completely separate from the dining area and family room. The home is in the Lake Hills development.

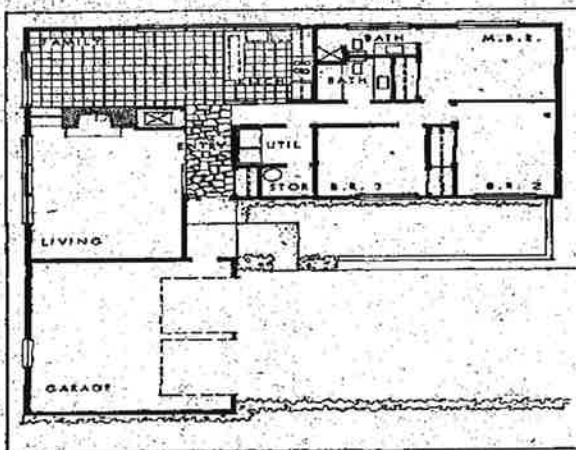
Today's plan, designed by Ronald R. Campbell, architect, has many desirable features in a one-level house. The L-shaped plan forms an inviting entrance court and the slate-floored entry is a gracious way to welcome guests.

One corner of the family room is planned for dining—a daily activity which, at the most, takes less than two hours. Why then devote a whole room to it when space is at a premium? Automatic laundry appliances are away from the food-preparation center and are placed in a separate utility room. The three bedrooms have two full baths to accommodate a growing family.

Exterior Is Cedar

The exterior of the house is finished in cedar siding in a warm, easy-to-maintain red-wood color. Panel insets are yellow. Note the recessed porch which opens into the house on the right and into the large two-car inclosed garage on the left.

The slate-floored entry has a



DRIVING DIRECTIONS

To reach Lake Hills drive east in the Sunset Highway to the Eastgate turn-off. Take the overpass and continue north in Southeast 16th to the Lake Hills entrance, then follow open-house signs.

wood grille with translucent panels to separate entrance door and guest closet from the living room. The slate continues to the opening into the family room, the kitchen and the bedroom passageway, forming an easy-to-maintain

floor covering where traffic is heaviest.

The living room is large, with a pretty picture window overlooking the garden and a raised fireplace with a cantilevered hearth. Walls are painted beachrock (beige); the floors are hardwood.

The family room is the center of activity in this plan. Sliding doors open onto a patio for children's indoor-outdoor play. There is a built-in barbecue for year-round use. One corner near the U-shaped food-preparation center is planned for family meals. (When parents entertain they may prefer

using a drop-down table in the living room or serving buffet style with trays.) Walls are green; the floor combines brown, beige, pink and yellow in the vinyl.

Appliances in the kitchen are in U-shaped plan. A long island counter holds the table-top range and a suspended storage cabinet separates dining space and work center. Stainless-steel sink and dishwasher are placed below the wide window wall. The refrigerator and built-in oven are on the third wall. Cabinets are finished in bleached mahogany; counters with rolled edges are pink.

Wardrobe Walls Noted

Two bedrooms and family bath and the parents' bedroom and shower-bath are planned in this wing of the L-shaped plan. Each bedroom has a window wall and a wardrobe wall. One bedroom is in pink, the other in green. The family bath is an inside room with ventilating fan. Fixtures are coral. Note the large storage cabinet with sliding mirrored doors over the built-in vanity and hand bowl.

Leonard Homes, Inc., have built this quality home on a site 80 by 100 feet in rapidly developing Lake Hills, a community of 700 new homes with a population of approximately 3,000 persons.

Ground just has been broken for the new elementary school in the middle of the community. Open-house hours today are from 10 a. m. to 8 p. m. The address is 15644 Lake Hills Boulevard.

Par
Hor
Pro
May
has p
Septen
Parade
Seattle
The
spons
ers' A
Seattle
is the
Nation
tional
by the
Home
Seattle
affiliate.
In h
Clinton
this an
nation-
ented
Better
A ti
the we
this ar
through
Clinton
"The
clation
be com
tion to
of our
ing Se
Week."
Busin
Both
Ben
a retail
38 Ho
Dick
sales f
sociate
The p
\$49,000
Law
sociate
estate
New
Offi
Estal
br a n
Homes
annour
Willarc
Char
named
compa
Lake J
Bellev

Two-Week Festival of Fine Arts Covers Wide F

HIGHLIGHTS: "Lake Hills" Church.

find



LAKE HILLS PLANS: The congregation of the Evangelical and Reformed Church has approved plans for the church building shown in this sketch by the architectural firm of Lindahl & Bacon. The first unit will cost about \$30,000.

Church to Be Constructed in Lake Hills

The new **Lake Hills** Community Church yesterday announced plans to begin construction of the first unit of a church building in the summer.

The unit, including a small chapel and church-school facilities for an enrollment of 220 pupils, will cost about \$30,000. The church will be built on a two-and-a-half-acre site at 14250 S. E. 13th Place, a block from the main entrance to **Lake Hills**.

The design of the **church**, by the Bellevue architectural firm of Lindahl & Bacon, provides for multiple use of the lower floor for other activities of the congregation and its organizations, said the Rev. P. L. Eisenhower, pastor. The congregation, affiliated

with the Evangelical and Reformed Church, began meeting last July. It was organized last December. Its membership now is 68. Services are held in the Lake Hills Community Club Building.

The denomination's Board of National Missions is helping the congregation provide financing. Andrew T. McGarry is chairman of the church's building committee.

R
of i
ren
7
wo
B
rc
hi
th
out
on
lak
C
bel
no
ity
cor
vie
wi
hic
ou

HIGHLIGHTS: "Lake Hills" Church.

fin

Lake Hills Lutheran Pastor Named

The Rev. Albert H. Tietz, Spokane, has accepted a call as first pastor of the new **Lake Hills** Lutheran Mission.

Mr. and Mrs. Tietz and their four children will move into the parsonage, 15441 S. E. 9th St., August 1.

Mr. Tietz was graduated from Wartburg Seminary, Dubuque, Iowa, in 1937.

Mr. Tietz has been pastor of Spokane's St. Peter's Lutheran Church since 1950.

Under his leadership, the Confirmed membership has grown from 135 to 500, the baptized membership from 280 to 1,000 and the Sunday-school enrollment from 100 to 450.

The **Lake Hills** congregation is building a church at Lake Hills Boulevard and 150th Place Southeast.

rence
who
ed at
her
obate
Court
e.
37th
hn B.
L
airy-
T
ts of
of
2,000
ome
Chil-
tal.
uded
hters
Agen
ands;
Santa
ames
and
rence
f.
1,000
hters

HIGHLIGHTS: "Lake Hills": Church.

2 Congregations To Move Into New Buildings

group
some-
near
will
ment
ester-
nning
L
E
F
T
West
the
g the
high-
dence
y. It
-resi-
have
under
y for
s an
perty,
to re-
Abel
ecting
n fair.
zon-

Two **Lake Hills** congregations will move into new church buildings tomorrow.

The **Lake Hills** Lutheran congregation will hold a family worship service at 9:30 o'clock in its church at Lake Hills Boulevard and 159th Place Southeast.

Children will be baptized at a service at 11 o'clock. Sunday-school sessions are scheduled for 9:30 and 11 o'clock. The congregation, whose pastor is the Rev. Albert H. Tietz, has been meeting in the Phantom Lake Elementary School.

The congregation of the **Lake Hills** Community Church will meet in its chapel for the first time at 11 o'clock tomorrow. Sunday-school classes will be held at 9:30 o'clock. The Rev. P. L. Eisenhauer is the pastor.

The congregation was organized last December and has been meeting in the Lake Hills Community Club.

Lect
On
Of I

The
St. L
and I
series
tures
practic
cation
ligion
day li
morro
Church
Trut
Third
Dr.
minist
First
Church
Loui
speak
day se
ber
Holme
Dr.
sales
ance c

Car
Spe
Pre

Date: Sunday, February 16, 1958 Paper: Seattle Daily Times

This entire product and/or portions thereof are copyrighted by NewsBank and/o

HIGHLIGHTS: "Lake Hills": Church,

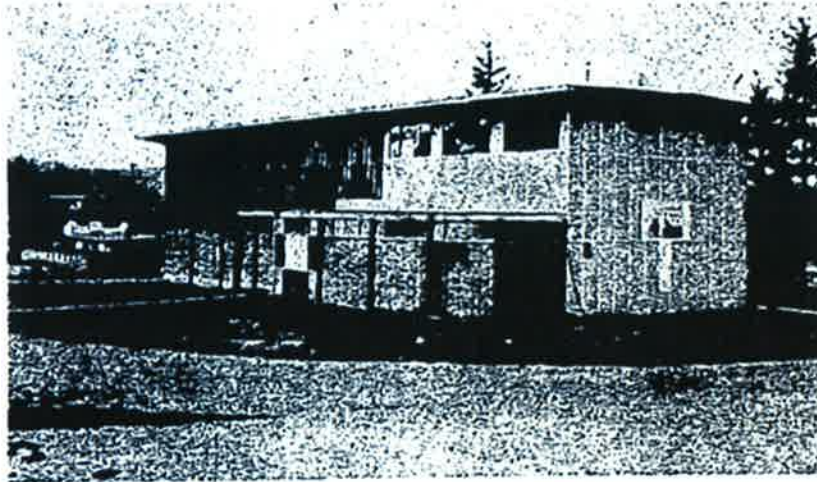
find



DEDICATION TONIGHT: Members of the **Lake Hills** Community Church put in 1,000 hours of volunteer labor in helping build this **church**, which will be dedicated at 8 o'clock tonight. The **church**, Southeast 13th Street and 142nd Avenue Southeast, is affiliated with the United Church of Christ. The structure, valued at \$48,000, was built at a cost of \$36,000, the Rev. Philip L. Eisenhower, pastor, said. The church was designed by the architectural firm of Lindahl & Bacon. Rosmussen & Funk held the building contract.

HIGHLIGHTS: "Lake Hills" Church.

find



Lake Hills Lutheran completed this building at 707 159th Place S. E. in November. It seats 250. The Rev. Albert T. Tietz, pastor, said the church is worth \$61,000, but volunteer labor kept the cost down to \$37,000.

Architect: W. G. Brust & Associates

[No Headline]

Date: 1959-03-22; Paper: Seattle Daily Times

This entire product and/or portions thereof are copyrighted by NewsBank and/or the American Antiquarian Society, 2004.

34 The Seattle Times Friday, March 20, 1959

New-Home Design in Lake Hills

Wide Variety Of Styling Offered

Flexible is the word for today's open house, the Alpine, a new model in Lake Hills. Designed by John Anderson and constructed by Bell & Valdez, the home is in the moderate-price range. It is not for sale but is shown with suggestions for the many ways it can be built on other sites with variations to suit the buyer.

The large upstairs of the house could be finished as a playroom and boy's bedroom, as a family room or studio, or as two bedrooms. Several plans will be displayed to show these and other variations.

Another flexible feature is the two-car attached garage which could be built as a single-garage and bedroom.

Development Is Rapid Lake Hills, opened in August, 1955, already has more than 1,350 families. Its rapid growth has included construction of a complete shopping

DRIVING DIRECTIONS

The new-design home in Lake Hills, featured as today's Seattle Times open house, is reached by driving in the Sunset Highway across Mercer Island and east to the Lake Hills overpass. There go north approximately two miles to the Lake Hills entrance and follow signs to the Trendsetter Lane office. The home will be open all day.

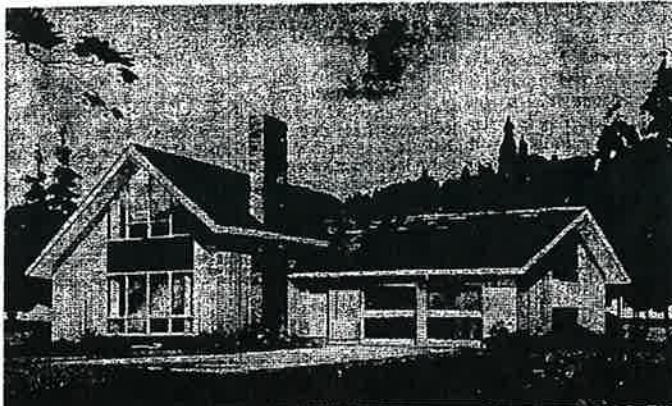
center and other assets for the community. Today's Lake Hills buyers, for instance, get a free membership in the swimming-pool club opened last September. They can enjoy the large pool and clubhouse.

Average lot size in Lake Hills is 75 by 105 feet.

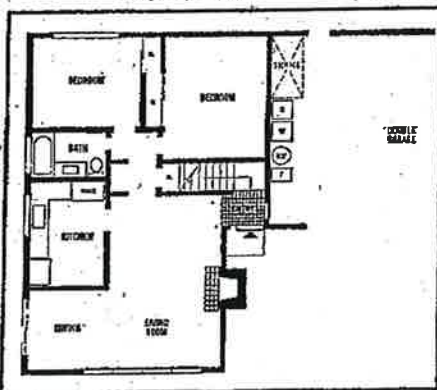
Bleached English-channel cedar siding, a shingle roof and the colonial red brick of the Alpine's chimney fit the woody atmosphere of the development.

Slate Used in Entry

The slate-floored entry leads directly to a large ell-shaped living-dining-room area. Here the painted walls are linen white. The fireplace, set in the red-brick chimney, is raised from the slate hearth.



OPEN HOUSE: The Alpine, to named because of its steep pitched roof, is the newest home design by John Anderson, chief designer for Bell & Valdez, builder of the home and hundreds of others in Lake Hills.



FLOOR PLAN: An ell-shaped first floor contains two bedrooms and a large two-car garage that could be divided into a single garage, with another bedroom next to the living area.

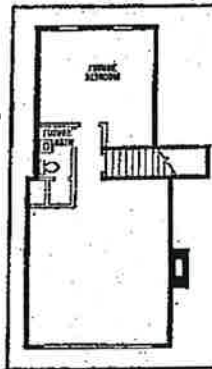
The fireplace wall is paneled with blond birch, matching the blond mahogany of the doors and woodwork throughout the home.

Large wood-framed windows are draped with white pull curtains, part of the interior decor planned by Doce's Majestic Furniture Store. Contemporary dark walnut, thin scale furniture is shown in the living rooms. The floors are carpeted.

Doors Lead to Patio

From the dining room, sliding glass doors permit access to the patio area.

In the kitchen, blue tile counters are a nice contrast to the blond sea-wood cabinets. There are a counter range and wall oven and space for a dishwasher. Extras here include magnetic



UPPER FLOOR: Two large rooms and bath are shown in the upper floor. In the model completed for today, they are finished as a bedroom and recreation room but could be adapted easily for other purposes if the Alpine design is chosen by a prospective buyer for construction elsewhere in Lake Hills.

has matching draperies with a gold motif.

Up the carpeted stairs we find the larger room finished as play area, its open beams dark brown, its clerestory windows wood-framed, and a double wardrobe installed. The smaller back room has yellow walls. Both rooms are floored with linoleum, heretofore pattern.

Utilities in the model will be installed in the garage which also will house the gas furnace and a large storage area.

Publisher-Analyst Will Be

UN
bul
Str
sid
Str
Vic

N.
Pu
Re

Ni
new
Hink
ann
yeste
Th
whi
oper
many
the
Hink
6722
N. Y
con
opera
the F

son
i
busin
Mrs.
widow
deale

Pa
man
brok
years
dent
in c
fairs
real-
year
in th

Th
resid
ertie
Nort
tion
Esta
As
are l
Thor
Wall

M
Fili

SEE: 16510 NE: 5TH ST.

HIGHLIGHTS: architect.; Church.; Latter; Day find

will be owned by Mr. and Mrs. J. Goodman. The construction was awa

New Model Boulevard Being Shown

A new model suburban boulevard with six furnished homes, named Storybook Homes, will be open for public inspection in Lake Hills today. George Bell, a partner of Bell & Valdez, announced.

The homes were decorated by C. Tony Pereria, Los Angeles interior decorator. Pereria has decorated Disneyland Hotel, the Gourmet Bar and Restaurant in California, and homes for Hollywood celebrities.

Included in the new homes is a decoration shop with samples of colors and materials to aid the home-buyer.

The street of homes, which cost about \$250,000, features one U-shaped floor plan called The Cinderella. The house has glass walls facing an inner-court—sliding glass doors and floor-to-ceiling windows. It has a slate entry, wall-to-wall carpets and built-in kitchen appliances.

Real Oper Depc

South real-esta an ince departm presiden

The managed and Joe associat firm, ha investm He atte sity an Colorad

Kussr End res has bee business: owned fore joi

The t of the First Av other o

1888 Being

A sm at 324 torn dc

L
E
F
T

At W Building

Chalet-Type Home in Lake Hills

4 Bedrooms In Two-Level House

The charm of steep roofs, dark-brown wane-edge siding and other details reminiscent of Europe's mountain houses marks the Chalet, a new model home designed by John Anderson and constructed by Bell & Valdez in Lake Hills, the large community east of Bellevue.

Anderson has chosen the dark brown of Swiss floors and basalt stone to resemble Swiss chimney breasts but he has included in the house a multitude of today's latest conveniences and has added such rooms as a pantry, huge storage over the double garage and a half bath on the first floor.

Contrasting with the dark siding is off-white trim on fascia boards and on the herring-boned, double front doors. The roof is shake, the exterior chimney adobe brick.

Entry Sheltered

The deck across the front of the home provides shelter for the entry with its four-foot overhang. The deck is paved.

Mica flooring in the entry matches the hearth below the raised firebox in the living room. A new-type divider between entry and living room permits light from the living room into the entry; two sheets of plastic with maiden-hair fern compressed between them are framed in wood.

All the wood on the lower floor is mahogany, stained fruitwood color. Upstairs, the wood is natural-color birch. Tweedy-brown-and-beige carpeting covers stairways and upstairs floors.

Windows in the living room are wood-stopped, the better to match the architecture of the home. Elsewhere windows are aluminum-framed. Ceilings throughout are acoustical plaster, sprayed on.

Rooms Aren't Divided

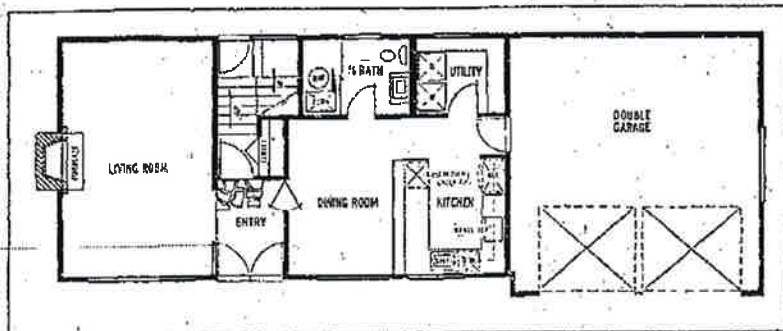
The kitchen and family dining room are not divided providing a feeling of spaciousness. Other homes built on this basic plan could have wall or cupboard dividers between the two rooms.

In the kitchen, cocoa-color appliances include a counter range, dishwasher and wall oven. The sink is a matching cocoa, the range hood is copper. The oatmeal tile on the counters is a good light contrast to the brown of the room. Kitchen cupboards,



OPEN HOUSE: This model home, a two-story, Chalet type that will accommodate a large family, is open in Lake Hills today for the first time as The Seattle

Times house of the week. The architect is John Anderson, who does all the home design for the building firm, Bell & Valdez.



FIRST-FLOOR PLAN: New to Lake Hills housing is the addition of a pantry which does double duty, serving as a utility room as well as for food storage and other pantry uses. The designer believes many women will appreciate this addi-

tional workroom space. Because the home is on a site that slopes back, the back entry is one-half flight up from the first floor. On another site the model could be adapted otherwise.

DRIVING DIRECTIONS

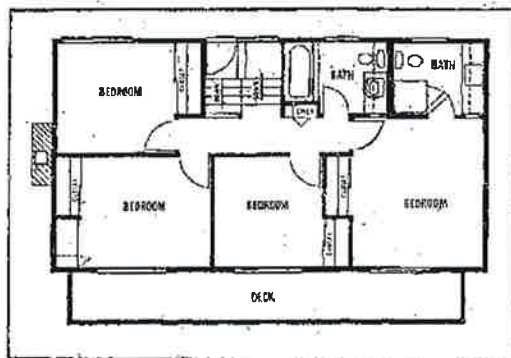
Lake Hills, where today's new model house is situated, is reached by driving in the Sunset Highway to the Lake Hills overpass, approximately two miles east of the Mercer Island East Channel Bridge. Drive north from the overpass to the entrance to Lake Hills, then following Seattle Times signs east and north to the intersection of North East Fourth Street and 164th Avenue North East near where the house is situated. Hours today will be noon to dark.

with magnetic catches, need no hardware. There is indirect light over the sink.

The gas furnace and hot-water tank are tucked into a small room next the half bath.

Vanity Is Birch

Upstairs, the family bath, with its birch vanity, has brown ceramic tile and brown



SECOND-FLOOR PLAN: Four bedrooms and two baths are found on the Chalet-model upper floor. There also is large storage space over the double garage, not shown on the plan. The long deck faces a rolling woodsy view. It is accessible only from the master bedroom, a safety feature that will appeal to parents.

vinyl floor. The master bath is finished in white tile with a built-in birch desk for a student.

Hours today will be noon to dark. Because tomorrow is a holiday the open house will continue at the same hours.

There are four large bedrooms, each with sliding-door wardrobes. One bedroom has a built-in birch desk for a student.

Pr
Fc

Four cepted life's c achiev lity w fruitie moder

Gler is the for tu Home sponst State ican I and T Alps fessor of W: course terests The

tranqu face o plexiti of wit bovine Alps fi Life, conti nces riums, sures princip growth

Life, artistic "living thing," "twisti ways i Alps terials, monpk in any Delicat ged cc

Real Adds

Mrs. who n dential erick real - firm, caliz the Baker, Park lands

Mrs. began estate with Davis 1954. she c in To of wh and s her in month

Mrs Seattle Unive

Kirk Firm Wir

SEC: 217-165TH AVE NE

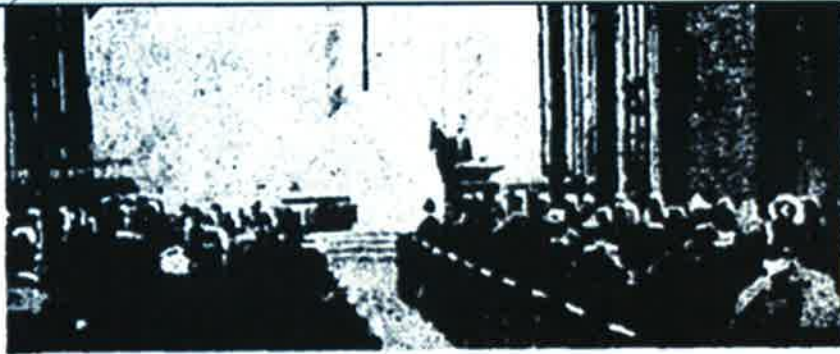
Sales of Six

Apartments Nearly Ready

Farm Sold

HIGHLIGHTS: "Lake Hills": Church.

find



NEW SANCTUARY: This drawing, by the architectural firm of Mithun, Ridenour & Cochran, shows the interior of the proposed sanctuary for the **Lake Hills** Community Church. Preliminary plans have been approved by the congregation. The Rev. P. L. Eisenhower is pastor.

Preliminary expansion plans: church school. have been approved by the congregation of the Lake Hills Community **Church**. P. L. Eisenhower, pastor, announced. The expansion also calls for enlargement of fellowship, office, kitchen and storage space. More parking will be developed in the two-and-one-half-

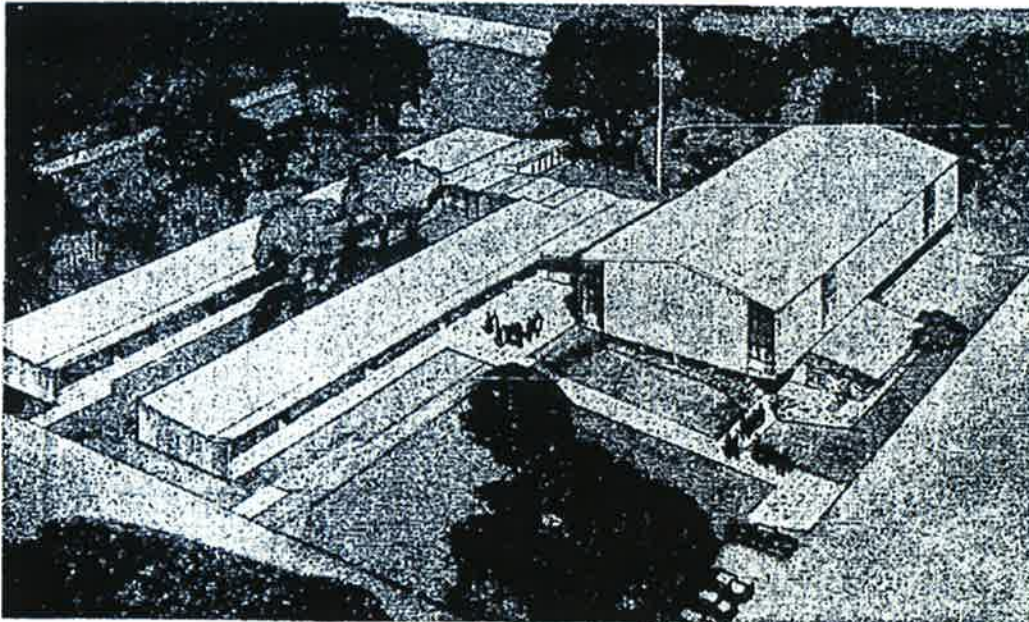
acre site. The architectural firm of Mithun, Ridenour & Cochran was commissioned to make the plans before it split into two firms. The former partnership will complete the plans. Robert McAbee, building-committee chairman, said present facilities are so taxed that church services and church school are on a two-shift basis.

A new sanctuary will be built with a seating capacity of 250. The existing structures will be converted for church-school facilities. The area below the sanctuary also will be used for the. The building committee is conducting a fund drive to finance the building. Serving with McAbee are Celia Goldsberry, Hal Nicholas, Vic Malen and Doug Loth.

HIGHLIGHTS: "Lake Hills", Church.

find

200H



LAKE HILLS CHURCH: This is an architect's sketch of church, parish hall, school and convent being built for St. Louise's Catholic Parish at Lake Hills. The project, designed by the architectural firm of

Gotteland & Koczarski, is costing \$550,000. The church plant is being built on a ten-acre site at 156th Avenue Southeast and Main Street. The Rev. Howard D. Lavelle is the pastor.

P
b
C
a
v
h
1:
T

HIGHLIGHTS: "Lake Hills": Church.

Lake Hills Baptists To Dedicate Wing

The First Baptist Church of Lake Hills will dedicate a \$30,000 educational wing at a service at 3 o'clock tomorrow.

The church is next to Sammamish High School in 140th Avenue Southeast.

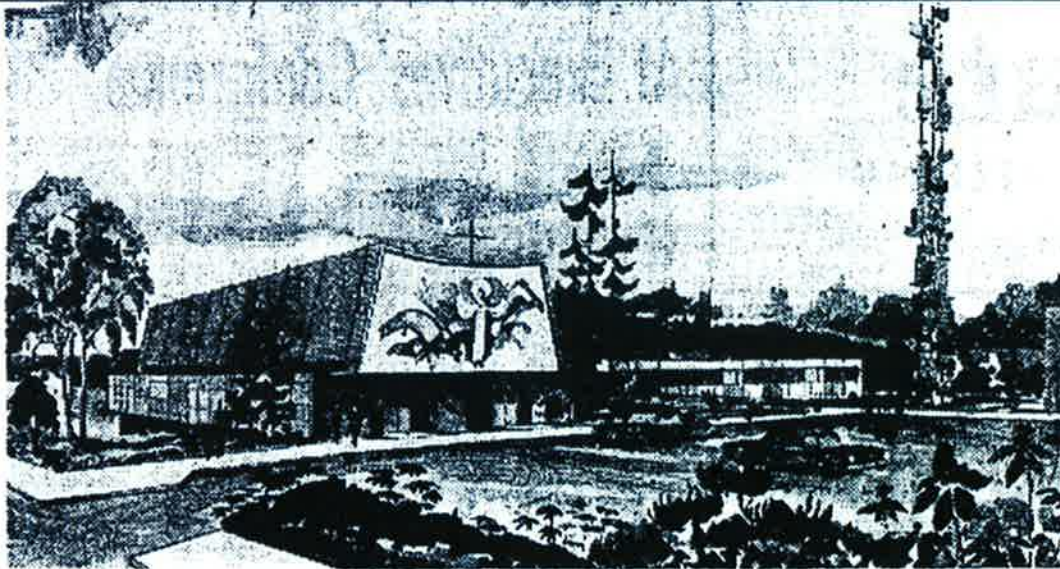
The Rev. Orion T. Rhodes, pastor, said the building provides two assembly rooms, 12 junior and intermediate classrooms, two nurseries and two beginning and primary rooms.

Vi
O
T
and
Pre
Cla
con
o'cl
the
Chu

HIGHLIGHTS: Lake Hills' Church.

find

200M



PLANNED: The Episcopal Church of the Resurrection, including a chapel, social hall and educational building, will be constructed on a five-acre site at 152nd Place Northeast and Main Street in Lake Hills. It was designed by the architectural firm of Johnston-Campanella. Bids for the first phase, the church, will be opened in

January. The chapel will have a full daylight basement, which will be used initially for a hall and Sunday School. The exterior will be in stone, marble-stucco, glass, and mosaic. John Munk, Harris McCarley, Phil Howard and Porter Lewis head the building committee. The Rev. Herbert McMurtray is pastor.

HIGHLIGHTS: "Lake Hills": Church.

find

THE BELL AND VALDEZ "CITATION" on-the-level luxury at a down-to-earth price



The CITATION—An open lot for the owner. Total lot 1/2 acre including lot 2000 sq. ft.

The Citation has features you'd expect to find in a much more expensive home. It's a happy mix of the best of the Bell and Valdez designs, with the full range of features of the modern look. The kitchen with the breakfast room, the best of the modern design combination. The all-around floor. The Citation is a great one. The price is low, the design is modern, and the quality is high.

Even beyond the price, the Citation is a real value. With 1,500 sq. ft. of living space, a 2 1/2 car garage, a large living room, kitchen, and a full bath, the Citation is a real value. The price is just \$17,900 including lot.

Why not drive and see the Citation for yourself? For the other Bell and Valdez featured model homes, see them in person and making the price low in Lake Hills. **Anderson, Brundage** is now building the other homes featured in this advertisement. Located in Lake Hills.

Anderson, Brundage has built and is building the best in modern design. The price is low, the design is modern, and the quality is high.

LAKE HILLS



The CITATION—An open lot for the owner. Total lot 1/2 acre including lot 2000 sq. ft.



The CITATION—An open lot for the owner. Total lot 1/2 acre including lot 2000 sq. ft.



The CITATION—An open lot for the owner. Total lot 1/2 acre including lot 2000 sq. ft.



The CITATION—An open lot for the owner. Total lot 1/2 acre including lot 2000 sq. ft.

LEFT

HIGHLIGHTS: "Lake Hills" Church.

find



ON ONE LEVEL TAKING AS A DOWN TO EARTH PRICE



The CITATION 1,150 square feet plus carport. Priced from \$17,250 including lot. \$700 down.

The Citation has features you'd expect to find in a much more expensive home. Why not drive out and see the Citation for yourself? See the other Bell

HIGHLIGHTS: "Lake Hills" Church.

find



DRIVING INSTRUCTIONS: From Seattle, drive across the floating bridge, turn north on overpass three miles east of Mercer Island and follow the signs to Lake Hills. For information call Interlake Realty, SHarwood 6-0330, exclusive agents for Bell & Valdez homes.

LAKE HILLS



The GREENBRIER 1,513 square feet plus attached double garage. Priced from \$17,450 including lot. \$695 down.



The WESTWOOD 1,988 square feet plus carport. Priced from \$17,500 including lot. \$700 down.

HIGHLIGHTS: "Lake Hills", Church.

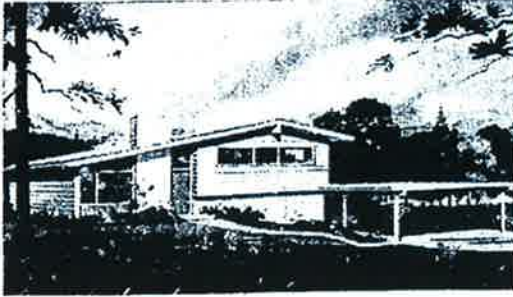
find

00000
zoom

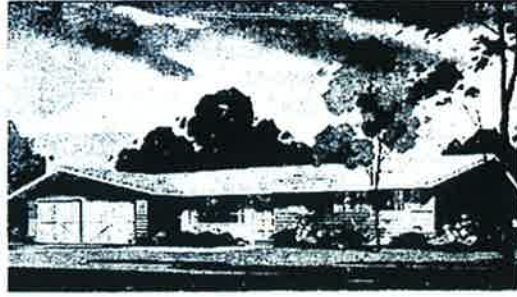


Print

dining area and family room. All for just \$17,250 including lot. \$700 down. [Click to](#)

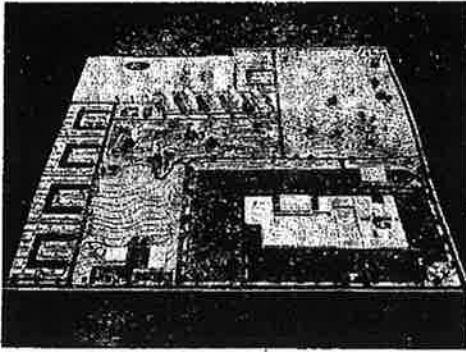


The CONTINENTAL 1,427 square feet plus carport.
Priced from \$17,500 including lot. \$700 down.



The BELLAIRE 1,180 square feet plus double garage.
Priced from \$15,650 including lot. \$615 down.

There's Magic Afoot At Crossroads Site



Here is a Model of the 105-acre community, Crossroads, Now under Construction.

If you want to see the way a piece of ground is transformed into a living, breathing community, drive out to the area of Northeast Eighth Street between 156th and 164th Avenues Northeast. Watch what happens when \$11,000,000 is put to work!



JACK WOODMAN

First of all there is a 40-acre shopping center that is being built and in which space already has been leased. Very soon there will be 562 town houses suitable for older people or for young couples. The first group of these, for retired couples, is finished. These are one-story, attractive, white-brick buildings convenient to bus service, but which are separated from the business area by a par-3, nine-hole golf course and a driving range.

THE SHOPPING center will include a covered ice-skating rink, a bowling alley, a play-barn theater, and professional offices, and secluded shopping courts. A site has been reserved for a civic center and for other recreational activities when needed.

Jack Woodman is the archi-

tect for Crossroads. A graduate of the University of Washington in 1949, Woodman taught at Montana State College. He returned to set up an office in Bellevue three years ago. He designed the medical clinics in Lake Hills and assisted with the community development.

AL SMITH, architect, designed the Village Green golf course, driving range and clubhouse. The latter will include a lounge, snack bar and pro shop. Marty Raab will be the pro. Visiting the Village Green recently you would have seen acres of leveled ground, scattered pine trees, stacks and stacks of enormous bags filled with grass seed and the foundation of the clubhouse.

Unseen were the water pipes that had been installed, so that shortly after the grass seed planting, a constant spray of water will turn the bare earth into a smooth, velvety green. The clubhouse, is scheduled for completion in record time.

GEORGE BELL, president of Bell & Valdez, is secretary-treasurer of Crossroads. Dick Willard is president of Crossroads. Financing is through Securities Mortgage Co., with Ruskin Fisher & Associates as engineer, Interlake Realty and Vincent D. Miller Co., the leasing agents.

National Magazines Cite Builder-Architect Team

When it comes to awards, John Andersen & Associates along with Bell & Valdez are probably the number one builder-architect team in Northwest history.



JOHN ANDERSEN

Among the national magazines carrying articles and presenting awards over the years have been American Home, McCall's, Life, Parents' Magazine, Better Homes and Gardens, the Saturday Evening Post, Living for Young Homemakers and Good Housekeeping.

Home-building trade-publication citations also have been

presented by American Builder, House and Home and Practical Builder.

Among Bell & Valdez's most recent honors are the Good Housekeeping Citation presented earlier this year, the McCall's Congress on Better Living home awards, and the Saturday Evening Post Blue Ribbon Award.

Home design and quality of construction have been the primary considerations in the majority of the honors and magazine articles each of which has furthered the national acclaim for the Bell & Valdez homes and John Andersen designs.

Bell & Valdez officers also have participated in national activities. George Bell, a director of the National Association of Home Builders, recently attended a housing conference in Washington, D. C.

Schools Reflect Lake Hills Growth

Because the population of the Lake Hills area has grown to 18,000 in six years, it is natural that there are many new schools. Where once there were no schools, six new elementary schools now stand. Pupils are taken by bus outside the area to two junior high schools and one high school.

Lake Hills is in the Bellevue School District. (The district will have 22 schools in the Fall.) Four of these are new and Sammamish High School has a 16-room addition. This reflects the population growth in the district.

LAKE HILLS' elementary schools are: Lake Hills, Sherwood Forest, Phantom Lake, Robinswood, Highland and a new school just opening, Hillaire. The first built was Highland in 1956 and in January, 1961, it had 556 pupils.

Phantom Lake was built next and in January its enrollment reached 717. Then came Lake Hills in 1958, with a 1961 enrollment of 721; Sherwood Forest with 479 and Robinswood with 422 were erected in 1960. Hillaire will absorb some pupils from each of these schools.

All the school buildings are attractive. Hillaire is long and low with colors of brown, white and gold. It has an amphitheater for outdoor entertainment.

IN ADDITION to the public schools, there is a new parochial school in the St. Louis Parish at 156th Avenue Southeast and Main Street. Included on the property are a parish hall, church and convent. These will be dedicated in October. Classes will begin for the first time in September.

Interlake Realty Leader in Field

The stature of Interlake Realty, East Side real estate firm, is reflected in the fact

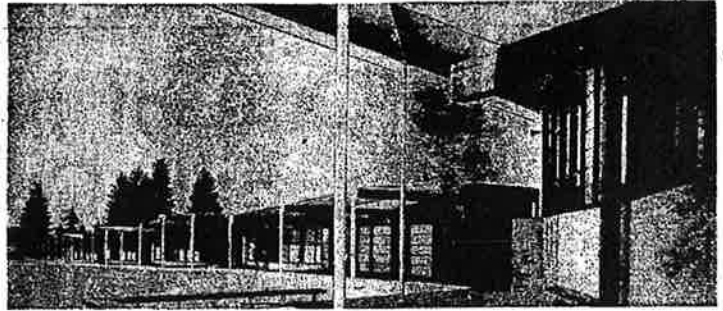
that the home-building and real estate industry looks to Interlake as a leader in up-to-date methods of presenting and selling homes.

Dick Willard, president, is a member of Life magazine's exclusive

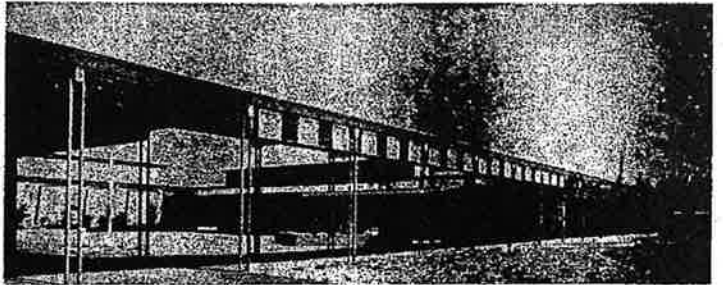
DICK WILLARD national home-building marketing council. The firm's progressive sales programs and activities are often featured in leading home-building and real-estate trade publications.

ACCORDING to Willard, the important reason for Interlake's success is "that our people do not try to sell a person a home, but rather we try to aid a family in selecting the proper home to suit their needs". This attitude has a great deal to do with Interlake attracting some of the most competent personnel in the business, Willard feels. Interlake has 22 persons on its staff.

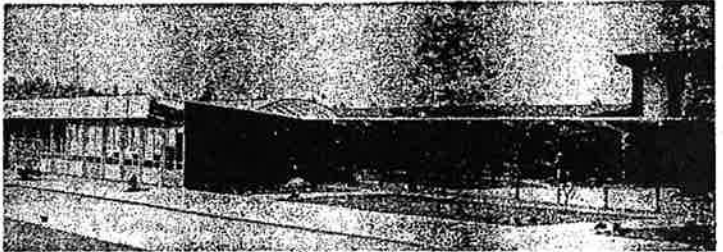
Although Interlake Realty maintains several sales offices on the Eastside, the main office is in the Lake Hills Shopping Center.



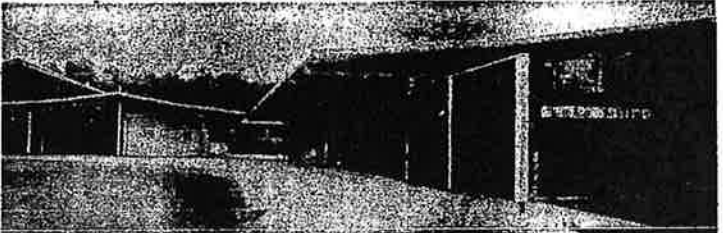
Hillaire Elementary School Will Open in September



Robinswood Elementary School is Near the Lake Hills Community



The Phantom Lake Elementary School is Conveniently Situated



Lake Hills Elementary School was one of the First Constructed



The Highland Junior High School is Near the Highland Elementary School



Lake Sammamish High School Serves Pupils From Lake Hills

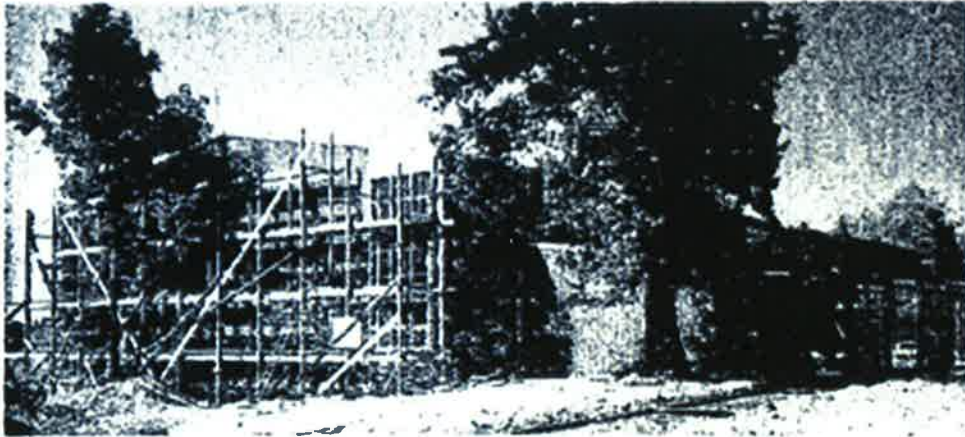
HIGHLIGHTS: "Lake Hills" Church.

find

40 The Seattle Times Sunday, August 20, 1961

(Paid Advertisement)

Many Churches Serve Area



The Saint Louise Elementary School Will Open in September

LEFT

Church congregations are being formed in Lake Hills almost as rapidly as houses are being built. In addition there are churches in adjoining areas, such as Eastgate, that serve Lake Hills residents.

The Lake Hills Community Church built their first unit in 1957 for use as a chapel, fellowship hall and classrooms. Mithun, Ridenour & Cochran was the architectural firm. Plans are being drawn for another section and the present building will become classroom space.

THE REV. Philip Eisenhauer is pastor of the congregation of about 250 members. The building is at 14200 S. E. 13th Place.

The Lake Hills Lutheran Church at Lake Hills Boulevard and 159th Place Southeast, also has erected its first building. The pastor is the Rev. Albert Tietz.

The Church of the Resurrection, an Episcopal parish, has purchased five acres of land near 15th Avenue Southeast and Main Street. The Rev. Herbert C. McMurtry, pastor of St. Margaret's in Eastgate, is the minister.

The congregation numbers about 175 families. Johnson & Camponella, architectural firm, is working on plans for a building. The group now meets in a school building.

A LARGE Presbyterian con-

gregation is meeting in the Phantom Lake School. This group hopes to build shortly. The Church of Christ also has been formed, a Lake Hills resident said.

St. Louise's Catholic church will have dedication services for their school, church and convent building in October. The church is already in use and the school will open in September.

The Rev. Howard Lavelle is in charge of the parish, assisted by the Rev. Thomas Murphy.

Some of the other churches serving the area are the Free Methodist, the Lutheran Church of Christ the King and the First Baptist Church of Lake Hills.

CHURCHES SERVE AREA

HIGHLIGHTS: "Lake Hills": Church,

find

The two-story gray block "little chief," Darnell said.

Homes Use Concrete

Enough concrete has been poured into the production of Bell & Valdez homes the past six years to build a hydroelectric dam or lay an average sidewalk from Seattle to Eureka, Calif.

The Lakeside Gravel Co., the firm that handles the majority of Bell & Valdez concrete needs, said the average

home with a basement includes about 40 cubic yards of concrete in its foundation, driveway and other parts of the home.

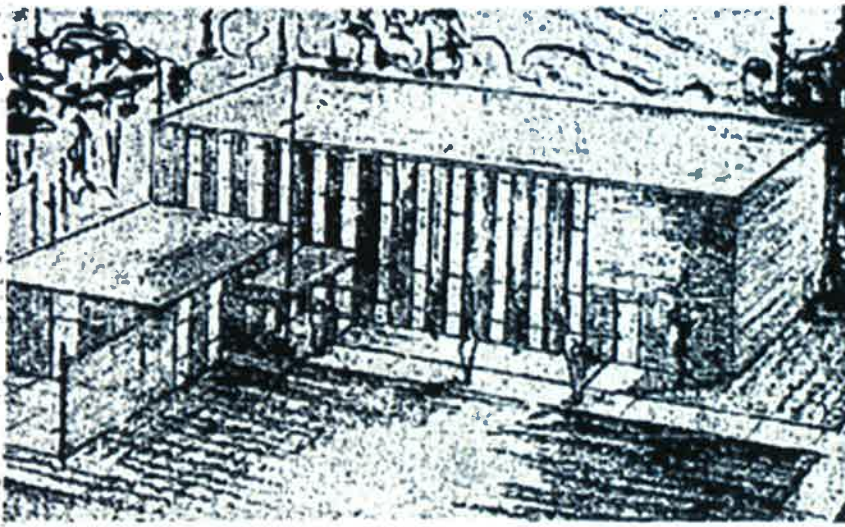
In all the construction in Lake Hills, Ivanhoe Park and Lochmoor, a total of approximately 120,000 cubic yards of concrete has been used in six years.

HIGHLIGHTS: "Lake Hills": Church.

find

FIRST SERVICE SET:

Lutherans to Build Lake Hills Church



PLANNED LUTHERAN CHURCH OF THE GOOD SHEPHERD AT LAKE HILLS

A church is being built for a Lake Hills congregation that has yet to hold its first worship service.

The first service of the Lutheran Church of the Good Shepherd will be held at 10:30 o'clock tomorrow in the Highland Junior High School.

The Rev. Harry T. Sorenson, who is developing the congregation under sponsorship of the Board of Home Missions of the Lutheran Free Church, said the church and parish-education facilities will be ready for use about November 1.

The church is at 164th Avenue Northeast and Northrup Way.

Mr. Sorenson, former pastor of the First Lutheran Church of Ellensburg, came here in July to organize the congregation.

M
Ch
Alt
the
nor
V
an
for
cei
Ch
Be
Sci
7
use
Fir
ter
7
na:
tio
roc
7
tic
mu
inc
tio
str
Th
the
Mi
wil
cia

O

HIGHLIGHTS: "Lake Hills": Church,

find

St. Louise Dedication Tomorrow

The new St. Louise Parish plant in **Lake Hills** will be dedicated tomorrow by the Most Rev. Thomas A. Connolly, Catholic archbishop of Seattle.

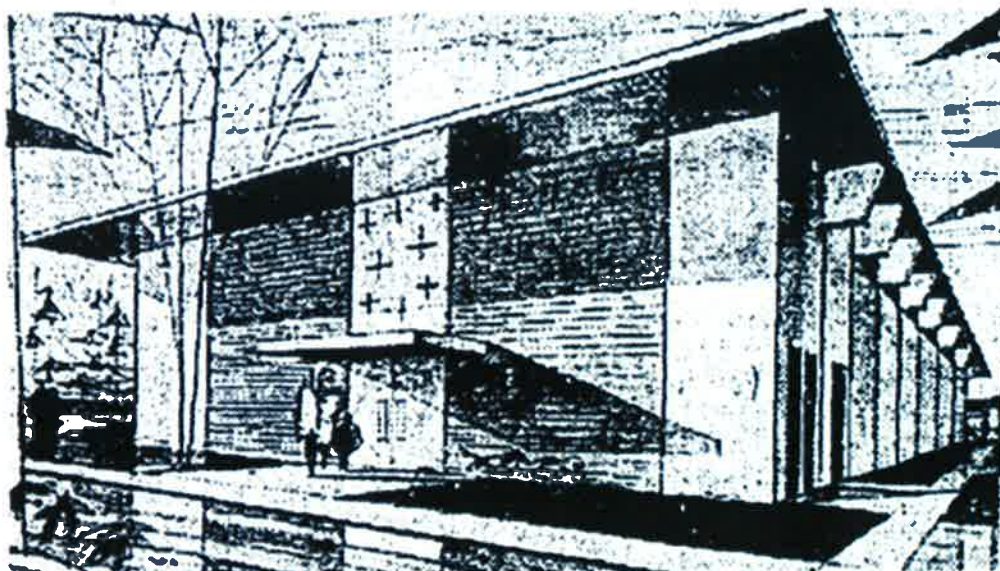
The facilities, costing \$550,000, include a church seating 840, an auditorium, school and convent.

The ceremonies will begin at 10:30 o'clock, followed by a Solemn High Mass, at which the archbishop will preside.

The Rev. Howard Lavelle, pastor, will be celebrant of the Mass and will preach the sermon.

Solemn benediction will be celebrated after Stations of the Cross are put in place at 4:30 o'clock. A dinner for the clergy is scheduled at 6:30 o'clock.

HIGHLIGHTS: "Lake Hills": architect.: Church,



NEW PARISH HALL: Construction of this parish hall and temporary church for the Episcopal Church of the Resurrection in **Lake Hills** is expected to begin next week. Parish offices, temporary church quarters, kitchen and lounge will be included in the 50-by-120-foot building, designed by Johnston-Campanella & Co., architect. A sanctuary, educational building and rector's residence will be built later.

HIGHLIGHTS: [icon] "Lake Hills": Church.

CEREMONY: Church Dedicated In Lake Hills



PARTICIPANTS: These ministers and laymen participated yesterday in the dedication of the \$110,000 Lake Hills Community Church. They were, from left, the Rev. Dr. Howard Stone Anderson, superintendent of the Southern California and Southwest Conference of the United Church of Christ; the Rev. P. L. Eisenhauer, pastor; W. R. Uhlte, a lay leader, and Victor Malen, a member of the building committee.

Jur
In I
Sla'

A ju
nine r
in th
trial a
\$2, of
of Rob
erton.

Supp
Stunt
side a
capital

MRS
free u
has be
chair
an old
Deps
E. Dis
ing wi
Turab
Mny J
ber in
N. E..

Coc
barten
tavern
three
a 38-
Mrs
Rober
the de
the ju
ing th
monia
from
or his
newsc

red
oto-
rid-
at
2nd
lock
e 2.
con
leg
the
frs.
18.
ker
ing
with
Er-
gh-
at
The
34.
red
ken
oto-
t a
reet
me
p. 55,
was
chs,
in
situa
ture
an
his
ons.
and
St.
ary
reet
Riv-
in-
ing,
balt
ing.

HIGHLIGHTS: "Lake Hills" Church,

find

000000+
ZOOM



the down payment and trade-in allow- UP time time balance.

Lake Hills Church to Open New Facilities

Four years of planning will be climaxed with the dedication by the **Lake Hills** Community Church of a new nave and remodeled facilities at 4 o'clock this afternoon.

The \$130,000 building is on a 2½-acre site at 142nd Avenue Southeast and Southeast 13th Place.

The nave will accommodate 300 worshippers. Facilities also include a social hall and kitchen.

An older unit houses church school classrooms, the pas-

tor's study and administrative offices.

The Rev. Dr. Howard Stone Anderson, superintendent and minister of the Southern Cali-

Boeing Man In Advisory Post

Dr. Nathan L. Krisberg, chief of technical staff for The Boeing Co.'s aerospace division, has been appointed to the Air Force Office of Aerospace Research Scientific Advisory Group.

The office is responsible for Air Force scientific research,

fornia and Southwest Conference of the United Church of Christ, will be the dedicatory speaker. The Rev. P. L. Eisenhauer is the pastor.

which is carried out in university and Air Force laboratories and by industrial research organizations.

Krisberg, a Military Academy graduate, joined Boeing in 1961 after his retirement from the Air Force.

Building At Lake Hills Dedicated

The new educational building of the Church of the Resurrection in **Lake Hills** will be dedicated by the Rt. Rev. Ivol Ira Curtis, bishop of the Episcopal Diocese of Olympia, at 11 o'clock tomorrow.

Bishop Curtis also will confirm a class at the 9:30 o'clock service.

The Rev. Allan Curtis Parker, Jr., is vicar.

The building will be named St. James Hall in honor of St. James. James F. Hodges, is treasurer of the diocese. Hodges, honored for his assistance to the **church**, will participate in the service.

The two-story building, containing classrooms, a nursery, library and rest rooms, cost about \$36,000.

LAUREL HIRST

HIGHLIGHTS: "Lake Hills": architect., Chi



tal
Frank
will pre-
sno and
o'clock
Mount
ch, 19th
Madison
well, or
of the
mber, is
eds will
s build-

L
E
F
T



CUTTING
David
honored
ption to
in the
Church
or of the

2 New Church Buildings To Be Used

Two area congregations will conduct services in new buildings tomorrow.

The Panther Lake Community Church (American Baptist) will hold opening services at 11 o'clock in its new building at 10630 S. E. 21st St. This first unit of church complex will seat 220 for worship and 150 for church school and fellowship.

The church was organized in 1951. Its first full-time minister, the Rev. R. Carl Reynolds, has been with the congregation seven years.

Mithun & Associates, Bellevue architect, designed the church. The J. D. Stewart Co. of Kent was the general contractor.

Cross of Christ Lutheran Church in Bellevue is moving into its new building at 411 136th St. N. E. and will conduct services there at 9:30 and 11 o'clock tomorrow.

The building near the Crossroads Shopping Center, was designed by Grant Copeland & Chervanek, Seattle architectural firm, and was constructed by the R. A. Hawkins Construction Co.

Dedication will be April 23.

During the past year, the congregation shared facilities with the Ner Tamid congregation which has purchased a Lake Hills church for a synagogue.

Youth For Christ Picnic Chairman

Rowland Johnson elected chairman board of the Great Youth for Christ. Party was secretary board.

Johnson, a cc photographer, is a of the First Conven

Other officers ar Gwinn and Marky vice president; Ker secretary, and Emmett, Jr., treasurer. Beckwith, a Bellevue, was elected board.

Lutherans To Service Special



REV. MARS

The Rev. Dr. M. Minneapolis, of the llum department American Lutheran will speak at service row through Weds Denny Park Church, 765 John

Dr. Dale will sp o'clock tomorrow 7:30 o'clock each His theme will be

HIGHLIGHTS: "Lake Hills": architect., Church,

an
ex-
on-

e a
he
not
thy

not
the
ts.
ate
ber,
the
vid-
ps"
We
rily
ake
ive
the

L
E
F
T

15,
the
b a
ock
reet
y.
fol-
cer
ac-
but
any

oy,
tol.

Multiple-Unit Housing Area Is Planned

Construction will begin next week in Bellevue on the area's largest privately financed multiple-housing complex for moderate-income families.

The \$2.1 million Spiritwood Manor will contain 130 units in 14 two-story buildings on a 7-acre site at 148th Avenue Southeast and **Lake Hills** Boulevard.

Hebb & Narodick, Inc., the builder, expects to have the one-, two- and three-bedroom apartments ready by the end of this year.

All units will have single baths and will be equipped with ranges and refrigerators. Rentals will be \$101, \$120 and \$138 a month.

To qualify, tenants must have gross incomes below \$9,450 for the three-bedroom units; under \$8,200 for the two-bedroom, and under \$6,950 for the one-bedroom units.

The project is being financed under a Federal

relhurst c
the Pres
Judge Wi

The Re
Trinter
church b
Francisc
nary in S
was aske
yesterday
servative
main wil
tion an
historic
sion of fa
1967 conf

"Such
I know m
Trinterud
The the
the Seatt
complical
matter."

Dr. Tri
stand ag
ness for
was his f
ness.

No. At Fe Treat

Army
Payton,
landed ir
terday al
P. treatr
few days

Payton
Lewis Ar

HIGHLIGHTS: "Lake Hills": architect., Church, (

apartments ready by the end of this year.

All units will have single baths and will be equipped with ranges and refrigerators. Rentals will be \$101, \$120 and \$138 a month.

To qualify, tenants must have gross incomes below \$9,450 for the three-bedroom units; under \$8,200 for the two-bedroom, and under \$6,950 for the one-bedroom units.

The project is being financed under a Federal Housing Administration program, which offers a 40-year loan at 3 per cent interest. The mortgage will be covered by the Federal National Mortgage Association.

Th Securities Inter-Mountain Co. provided interim financing.

Laurence S. Higgins & Associates is the architect. The cedar structures will surround a central pavilion which will provide space for a day nursery, Dan Narodick of the building firm said.

No. At I Tre

Army
Payton.
landed
terday
P. trea
few da;

Payt
Lewis .
ter Mc
before
where
with th
Compa

When
bus at
tagged
seas

through
opened

Payt
an esc
steak
special
wardes
charter

15,
the
b a
ock
reet
y.
fol-
cer
ac-
but
any

oy,
tol.

inch
gar
bott
lect
eet-
row

ary,
ing-
viter



Lake Hills Elementary School



First Baptist Church – 506 140th Ave NE

See: St. Andrews Lutheran Church; Church of the Resurrection (1962), LDS Church



15651 SE 8th St - "The Suburban" model - 1959



16510 NE 5th St - "The Alpine" model - 1959



217 165th Ave NE - Chalet Type _ 1960



16205 SE 8th Street – Thunderbird model



14240 Lake Hills Blvd – Tri-View Model



14231 Lake Hills Blvd – Thunderbird / Westwood Model



14271 Lake Hills Blvd – Thunderbird Model