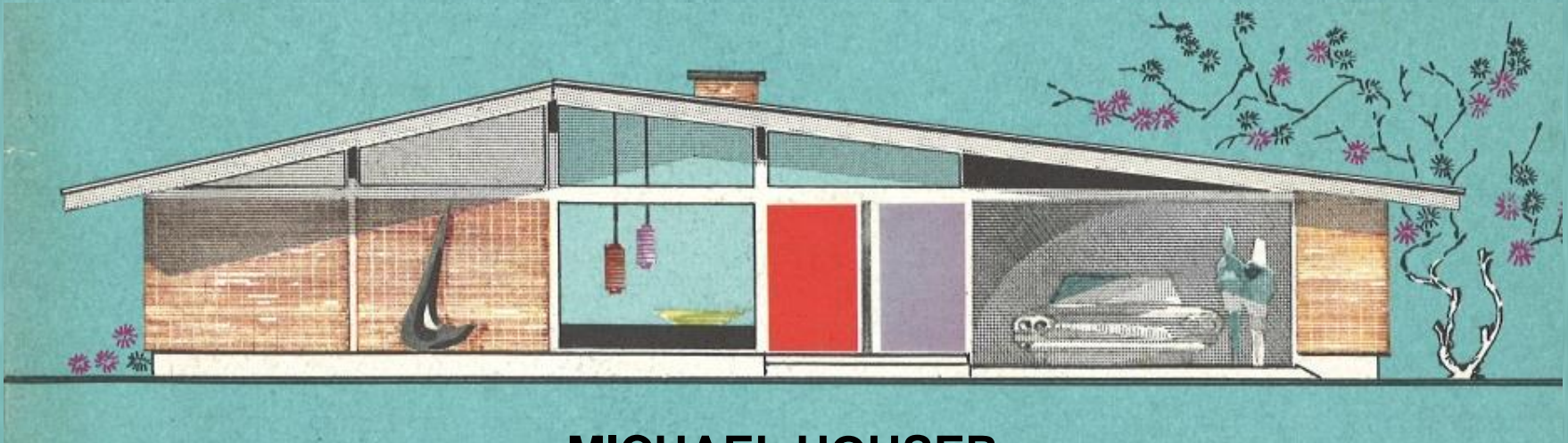




MID-CENTURY MODERN ARCHITECTURE

IN WASHINGTON STATE



MICHAEL HOUSER

State Architectural Historian

DAHP - Olympia, WA

June 2014

WRIGHTIAN

1950-1990

Flat or shallow pitched roof with dentillated
our outward projecting fascia boards

Clearstory windows

Sheathing can
range from
horizontal
wood siding
to brick, stone
and/or
concrete
block

Corner,
butt
jointed
windows

Emphasis on
horizontality

Plan
developed
using strong
geometric
shapes
arranged in
distinct
zones



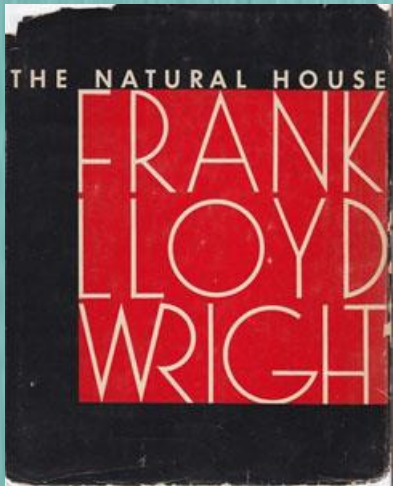
Broad deep
overhanging
eaves

De-emphasised
entry

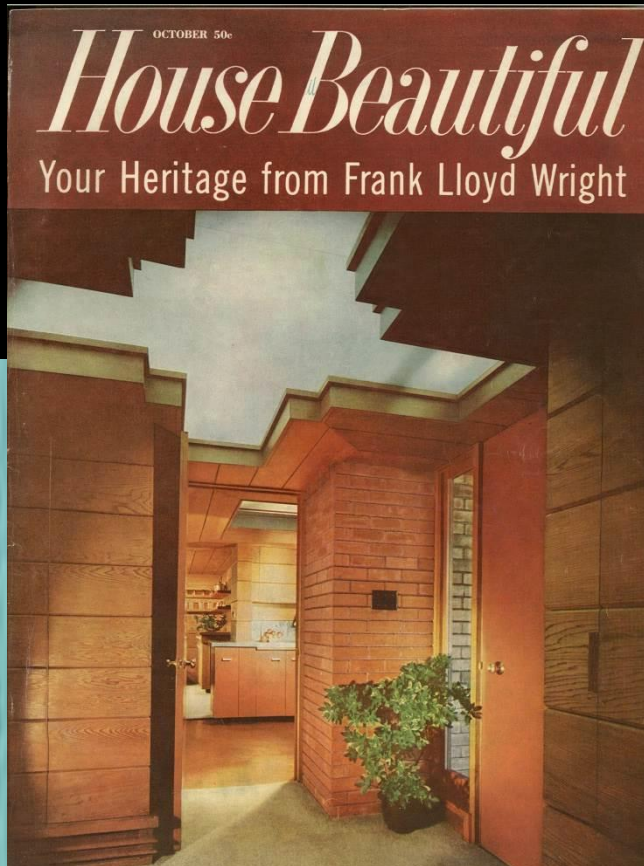
Stricker House | Seattle, 1968

WRIGHTIAN

History



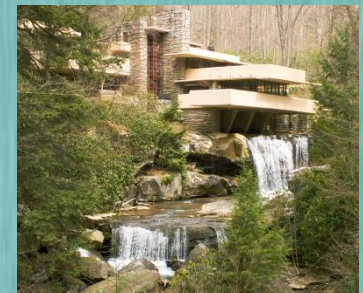
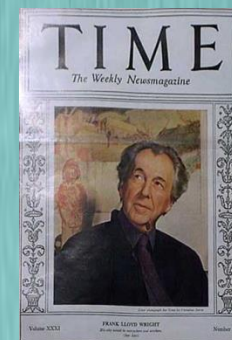
The Natural House 1954



House Beautiful
October 1959



Taliesin Fellowship 1941





WRIGHTIAN

Residential Examples



Brandes House Issaquah, 1952



Tracey House Normandy Park, 1955



Redfern House Seattle, 1962



Riley House Seattle, 1965

WRIGHTIAN

Residential Examples



Meakowa House
Seattle, 1967



Taylor House Sammamish, 1965



House University Place, c.1965



Kurus House Ridgefield, 1970



WRIGHTIAN

Multi-Family Examples



Drumlin Apartments Tacoma, 1965



Four Unit Townhouse Seattle, 1978

WRIGHTIAN

Ecclesiastical Examples



Faith Lutheran Church Sequim, 1974



LDS Church
Tacoma, 1968



LDS Institute of Religion Seattle, 1961



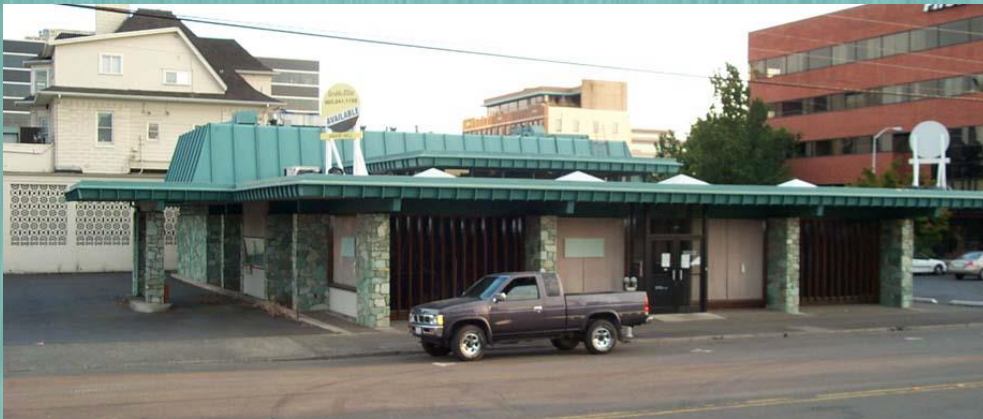
LDS First Ward Bellevue, 1962

WRIGHTIAN

Commercial Examples



Building Kennewick, c.1975



Bank of Vancouver Vancouver, c.1969



Theater Federal Way, c.1970



National Bank of Commerce Aberdeen, 1969