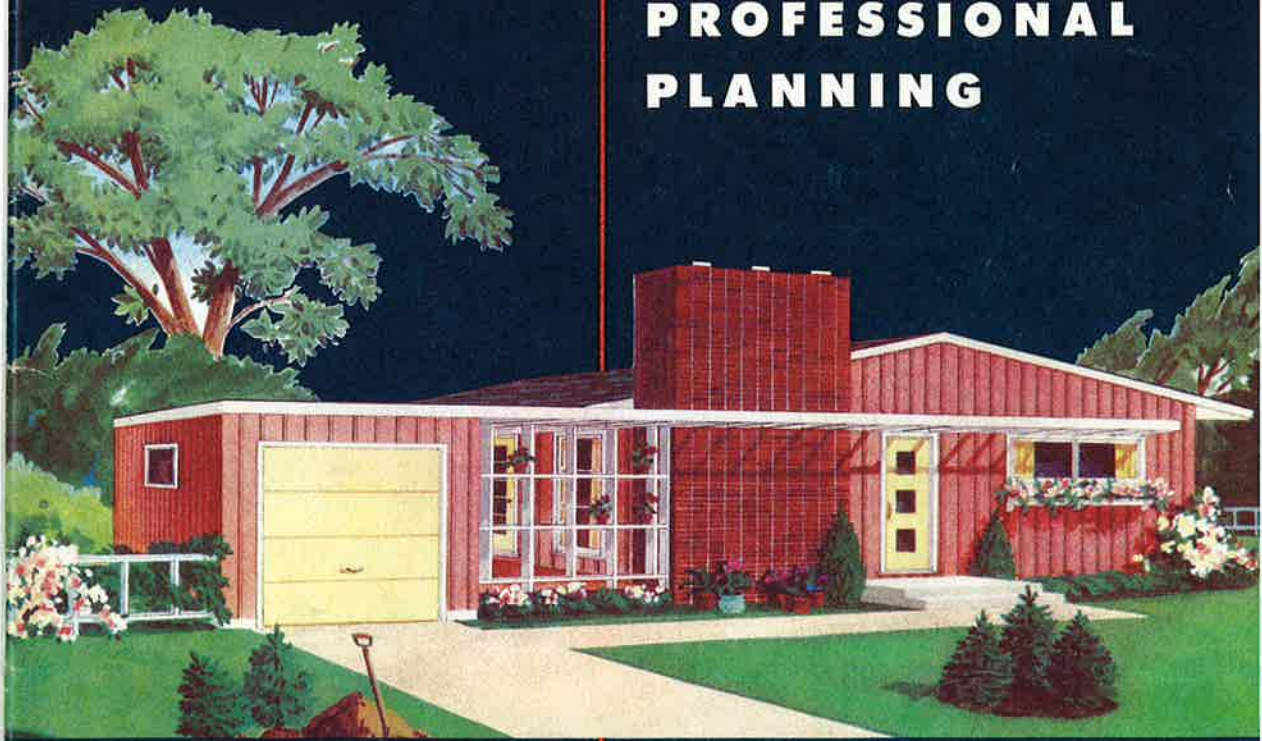
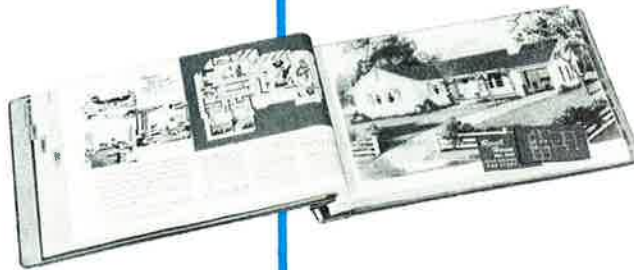


Masterpieces

**OF
PROFESSIONAL
PLANNING**



from the
Weyerhaeuser 4-Square Home Building Service



Index

FOUR ROOMS—ONE STORY	
Design No.	Page
4121	17
4123	7
4130	12
4132	13
4133	26
4144	19
4145	4
4148	21
4158	9
41-A	20
41-H	8
41-M	23
FIVE ROOMS—ONE STORY	
5118	25
5127	10
5130	14
5133	15
5134	24
5136	22
5139	11
5142	3
5146	5
FIVE ROOMS—TWO STORY	
5210	16
SIX ROOMS—ONE STORY	
6102	18
THREE ROOMS—ONE STORY	
31-B	6

Homes of Distinction

FROM THE WEYERHAEUSER 4-SQUARE HOME BUILDING SERVICE

The designing of a distinctive small home requires skill—architectural and engineering skill. Working within cost limits, the objective of experienced architects is to provide for maximum home value . . . through good design . . . efficient utilization of available space . . . and correct selection of materials for economy, sound construction and beauty. The architect provides convenient room arrangement for happy, comfortable living.

Among the scores of small home designs in the Weyerhaeuser 4-Square Home Building Service, the twenty-four designs shown on the following pages have earned exceptional popularity. As you study these homes, you will see how professional men create great home values.

Your 4-Square Lumber Dealer will be glad to help you in planning your home. Through him you can obtain blueprints of any of the modern designs in the Service—together with sound counsel in the selection of good building materials, financing, and other phases of home building.

WEYERHAEUSER SALES COMPANY

4-SQUARE LUMBER AND BUILDING SERVICES
SAINT PAUL 1, MINNESOTA





Design No. 5142

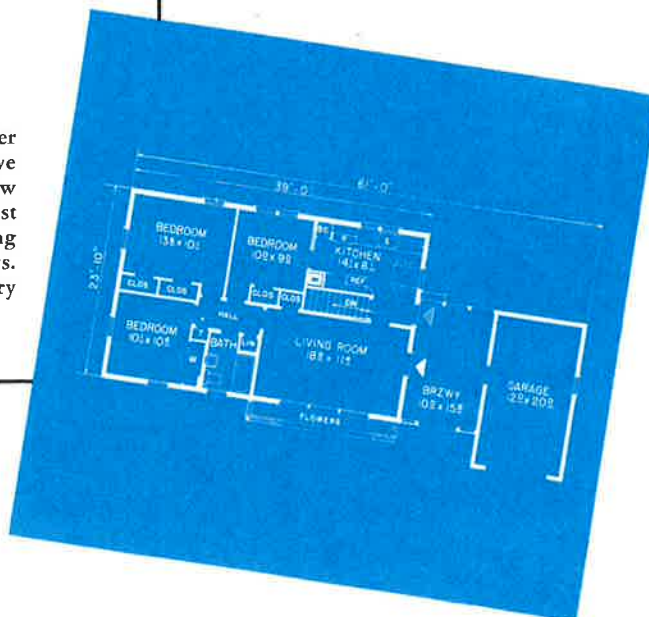
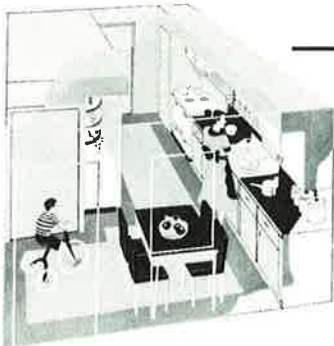
FIVE ROOMS • ONE STORY

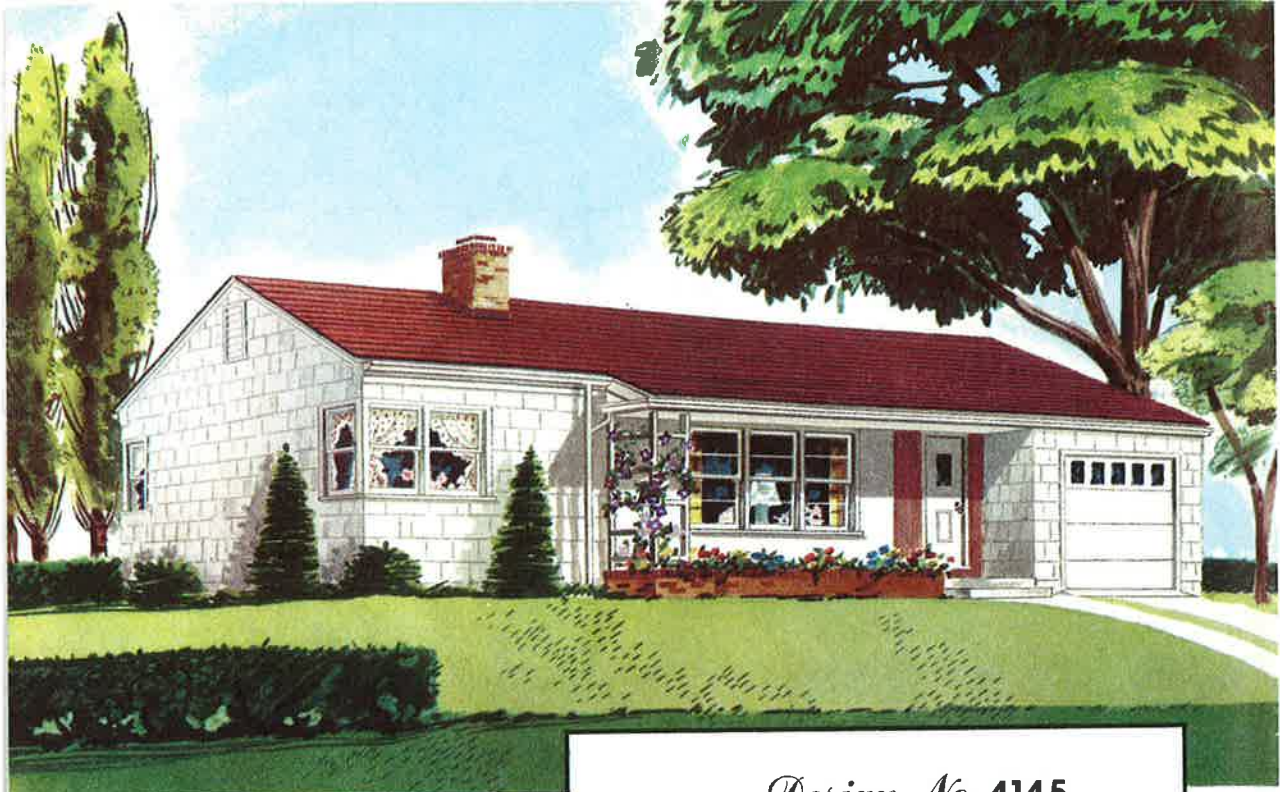
Dimensions—Including Breezeway and
Garage: 61'-0" x 28'-2"

17,864 Cubic Feet (House Only)

928 Square Feet (House Only)

This sunny, cheerful, country style rambler is designed along broad lines to achieve a free, open atmosphere, with just a few choice decorative elements to add interest and individuality. The wide roof overhang shields the living room wall of windows. The Breezeway provides a sheltered entry to both the living room and kitchen.





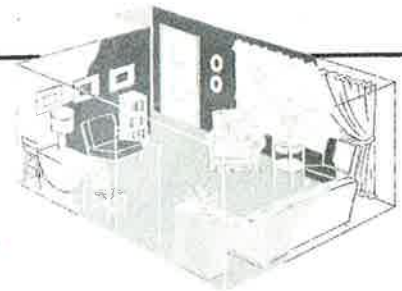
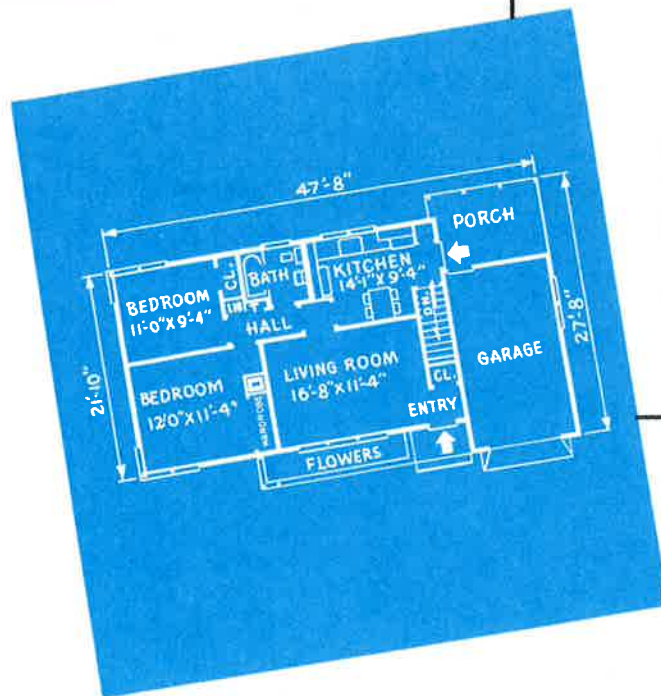
Design No. 4145

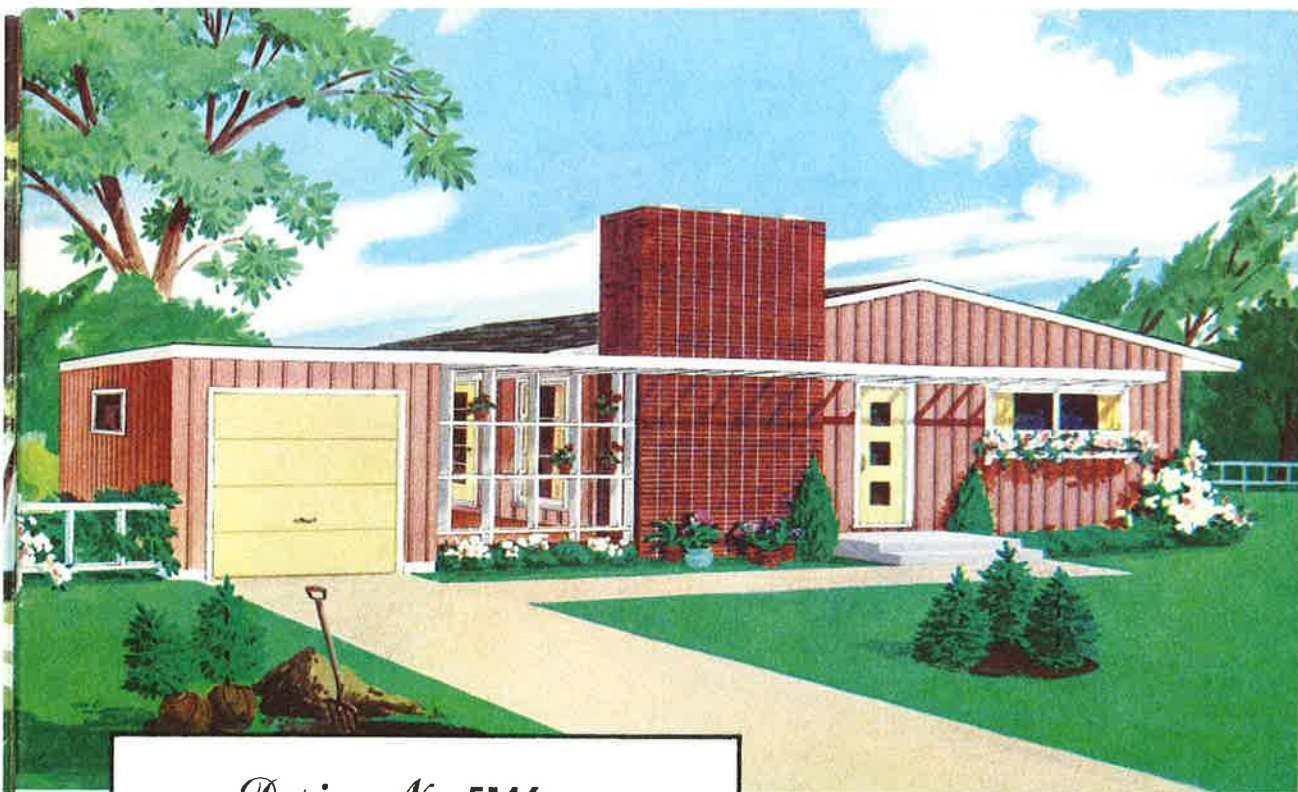
FOUR ROOMS • ONE STORY

Dimensions: 47'-8" x 27'-8"

17,144 Cubic Feet—788 Square Feet

A pleasing blend of materials, textures, and color are incorporated in this delightful 4-room home—a small home that possesses the merits of true comfort, convenience, and privacy. Two interesting alternates enable the builder to adapt this design to any building site.





Design No. 5146

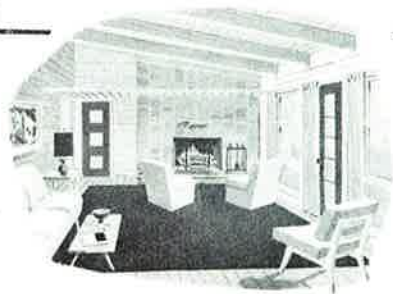
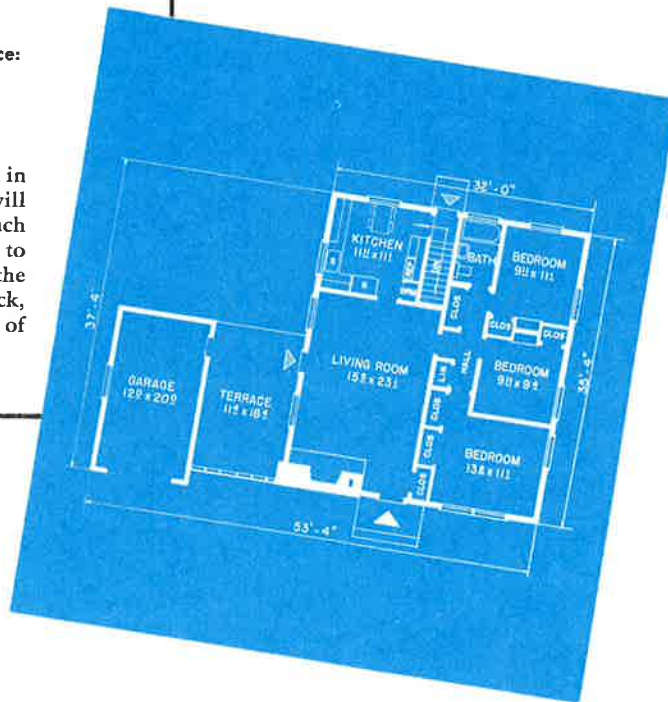
FIVE ROOMS • ONE STORY

Dimensions—Including Garage and Terrace:
53'-4" x 37'-4"

21,131 Cubic Feet (House Only)

1,130 Square Feet (House Only)

The enduring beauty of wood, featured in this colorful home, is assurance that it will wear well . . . that it will give as much satisfaction and comfort in the years to come as now. The crisp white trellis, the massive chimney of stacked Roman brick, and the modern terrace are all marks of distinction.



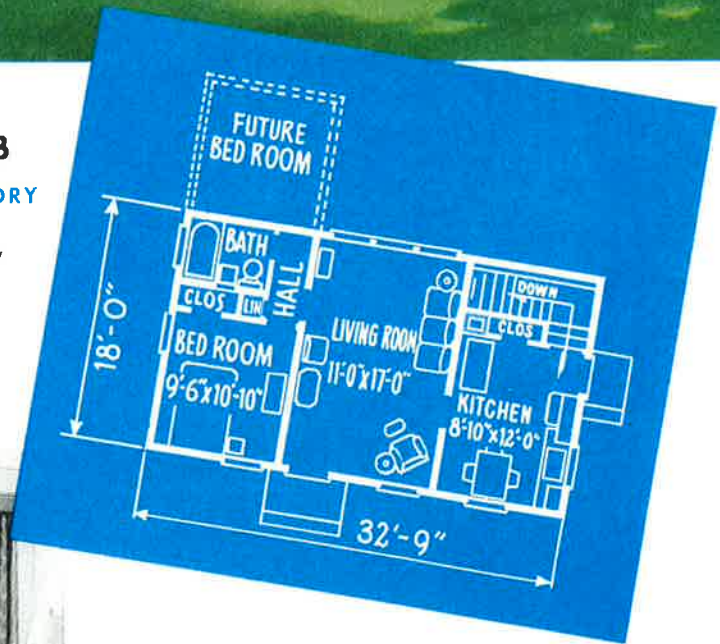


Design No. 31-B

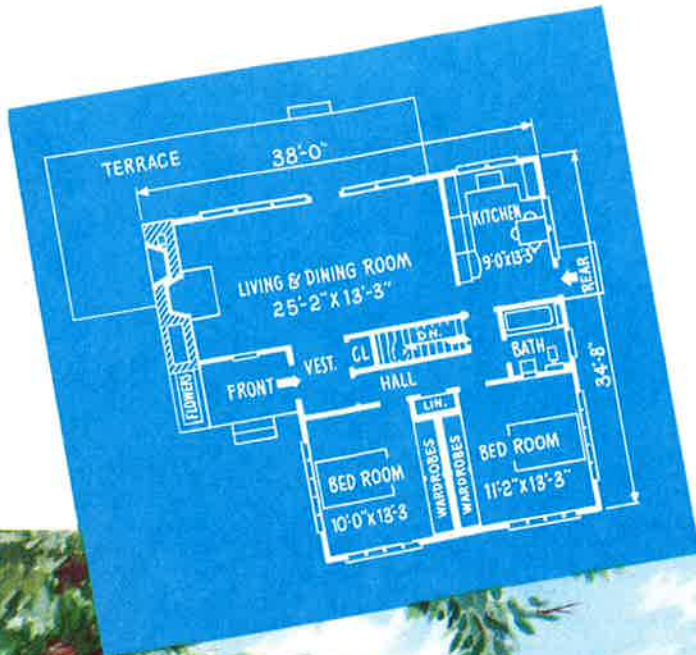
THREE ROOMS—ONE STORY

•
Dimensions: 32'-9" x 18'-0"

•
11,200 Cubic Feet
589 Square Feet



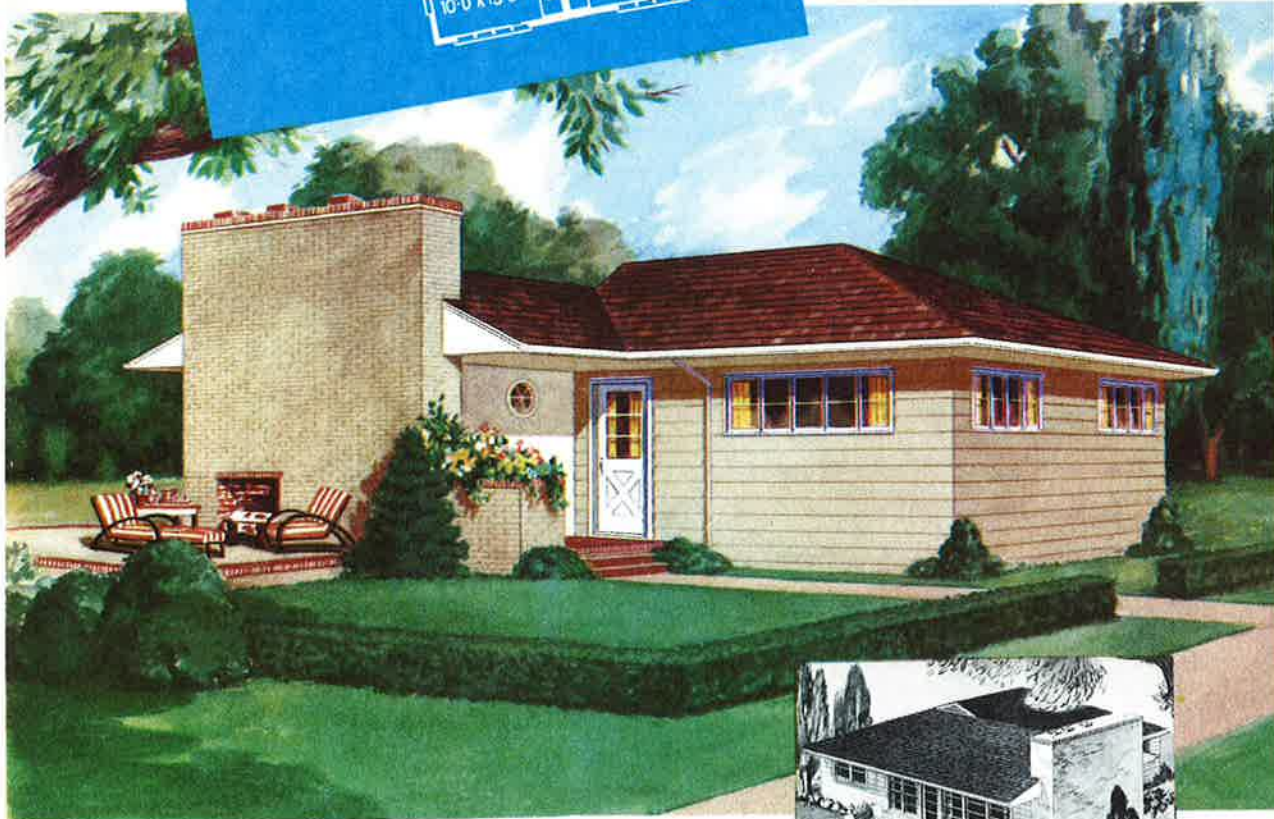
● Outwardly, the quiet dignity of this home, with its pleasant roof line and sheltered stoop, bespeaks comfortable living. Inwardly, the large living room is the outstanding feature. If desired, another bedroom can be added later.



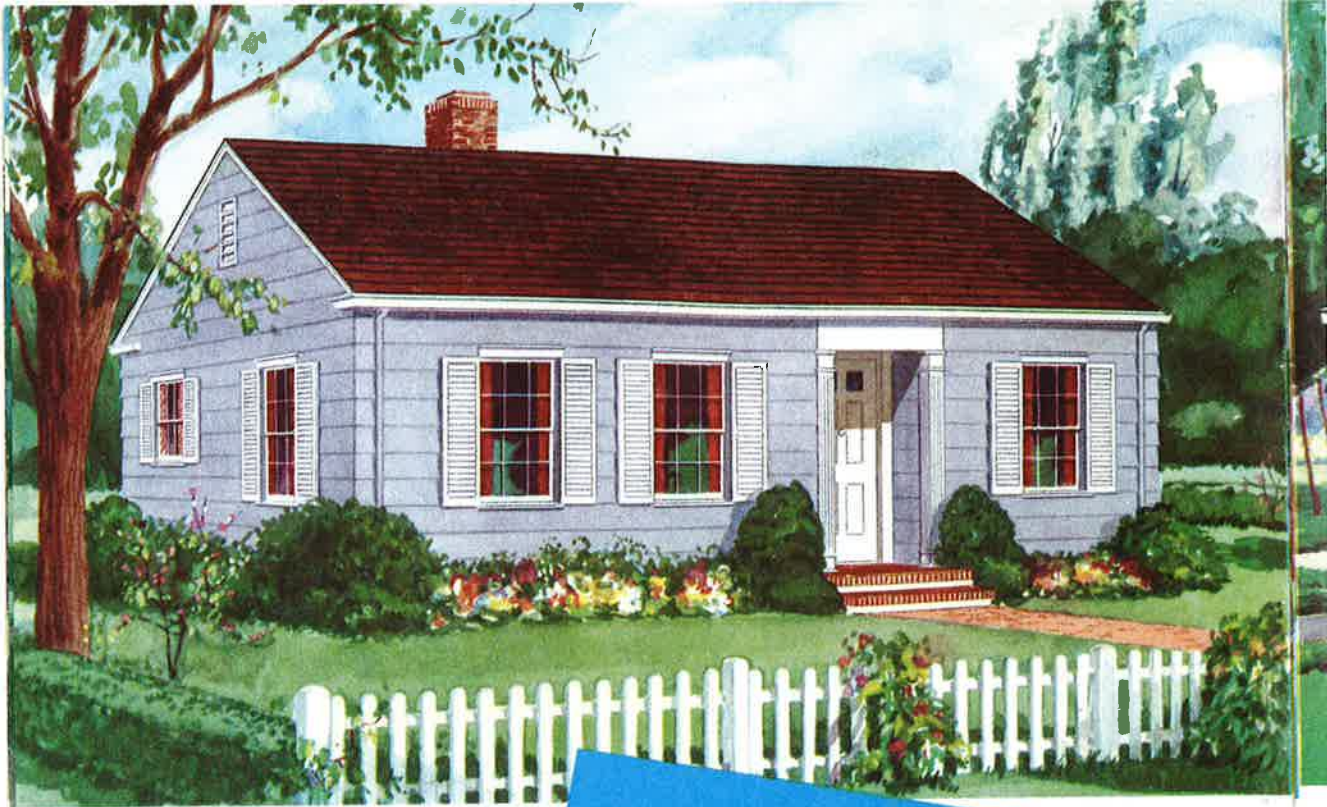
Design No. 4123
 FOUR ROOMS—ONE STORY

•
 Dimensions: 38'-0" x 34'-8"

•
 20,739 Cubic Feet
 1,050 Square Feet



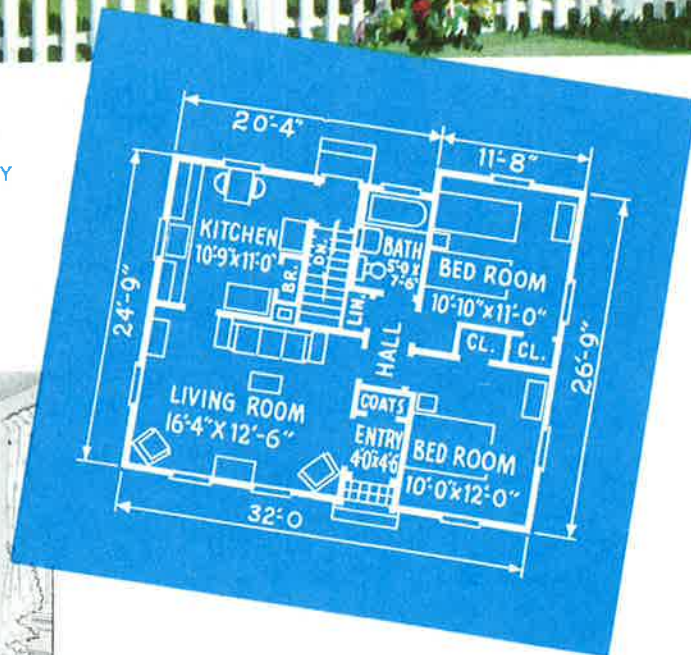
● This is a solar home, with a broad expanse of glass on its southern exposure. The overhanging eaves shut out the hot summer sun. In winter, warming sunlight is free to enter because the sun hangs low in the sky.



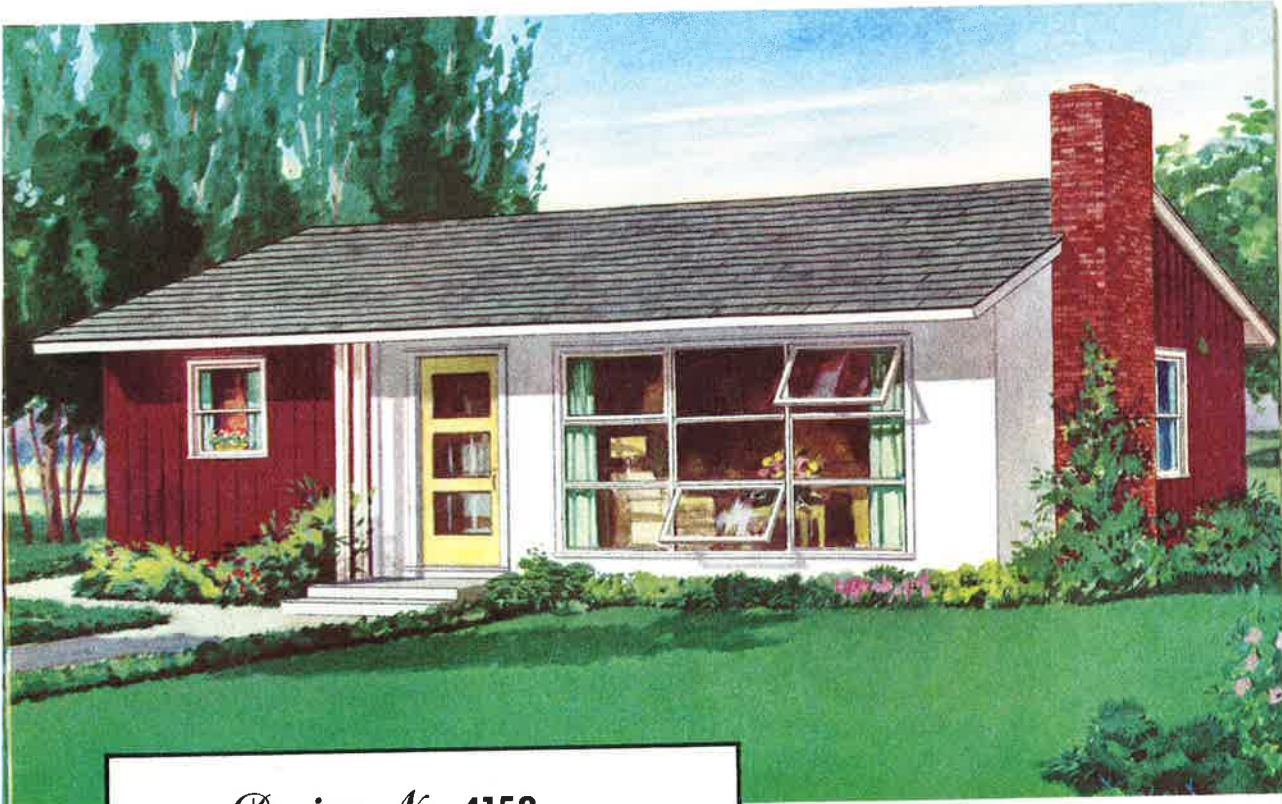
Design No. 41-H
 FOUR ROOMS—ONE STORY

•
 Dimensions: 32'-0" x 26'-9"

•
 16,281 Cubic Feet
 808 Square Feet



● Wherever this home is built, it invariably becomes the pride of the neighborhood—because it is good looking—wisely planned—carefully engineered, with many thoughtful extras that assure comfort, low maintenance cost and sound construction.



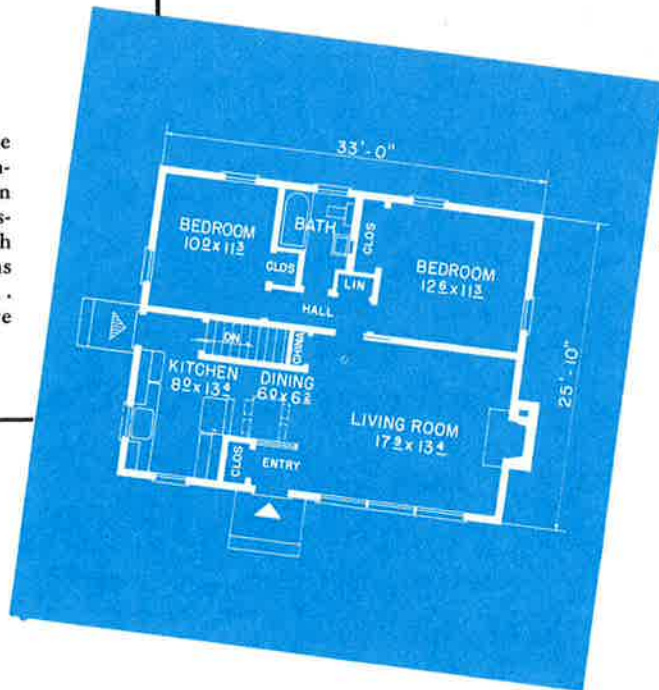
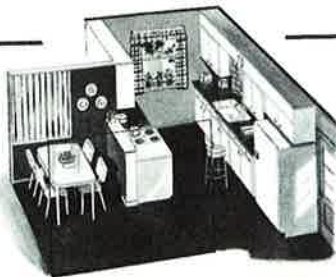
Design No. 4158

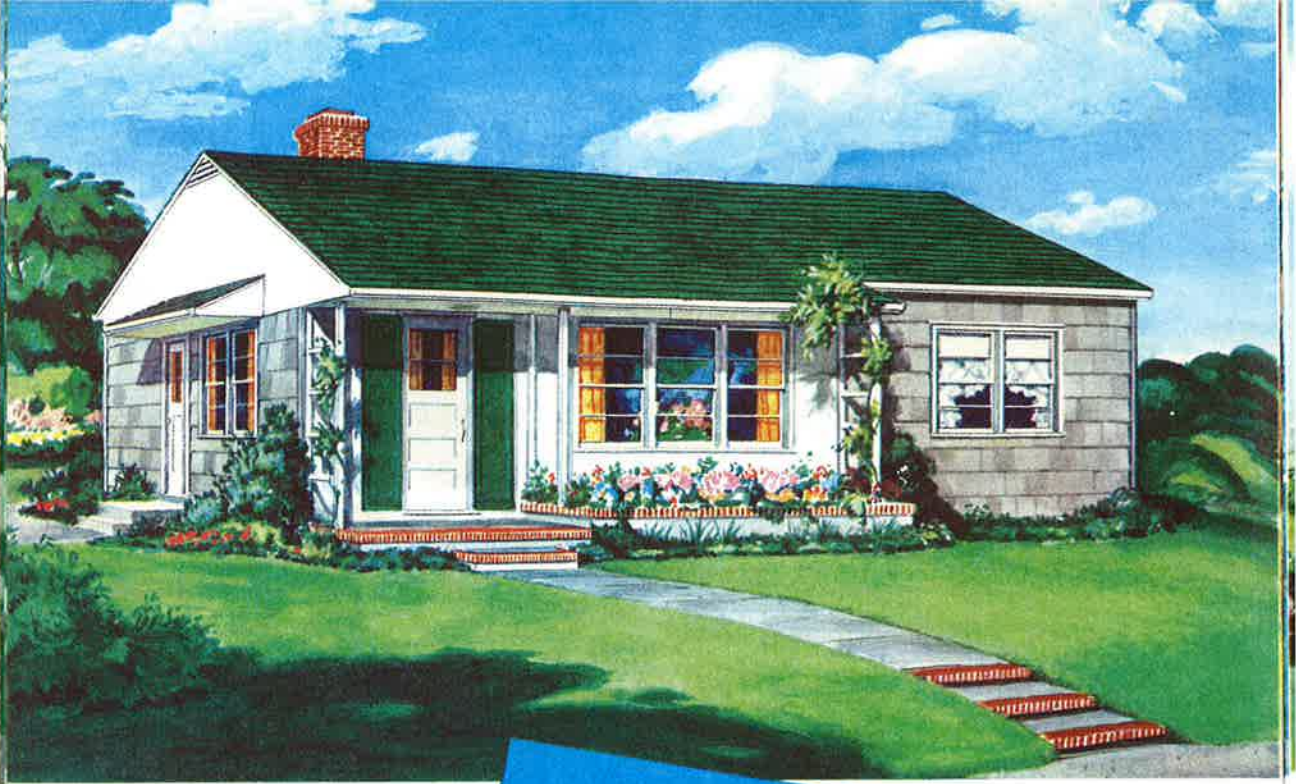
FOUR ROOMS • ONE STORY

Dimensions: 33'-0" x 25'-10"

16,245 Cubic Feet—855 Square Feet

This appealing small home combines the modern principle of gracious, open informality with practical family privacy. An economical rectangular plan is given distinctive handling through the use of flush siding combined with boards and battens . . . the protective, wide roof overhang . . . the large window wall, and the massive chimney.

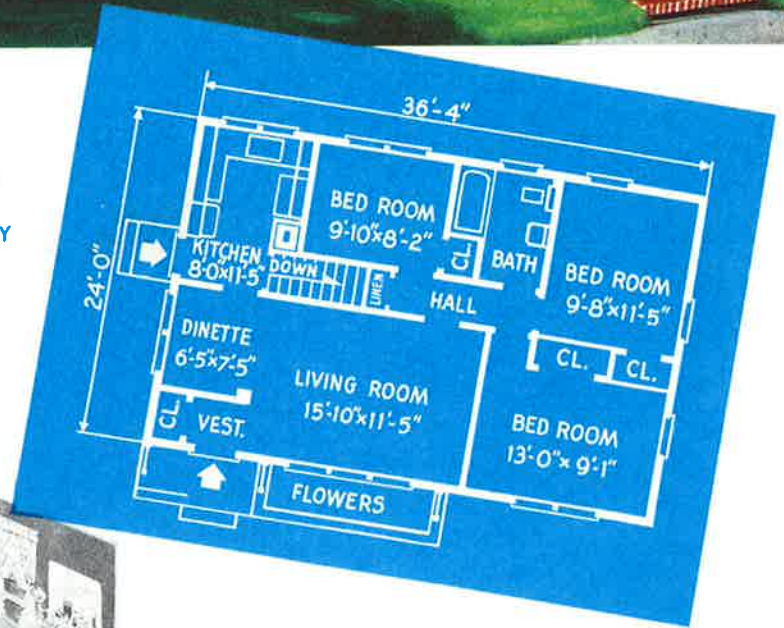




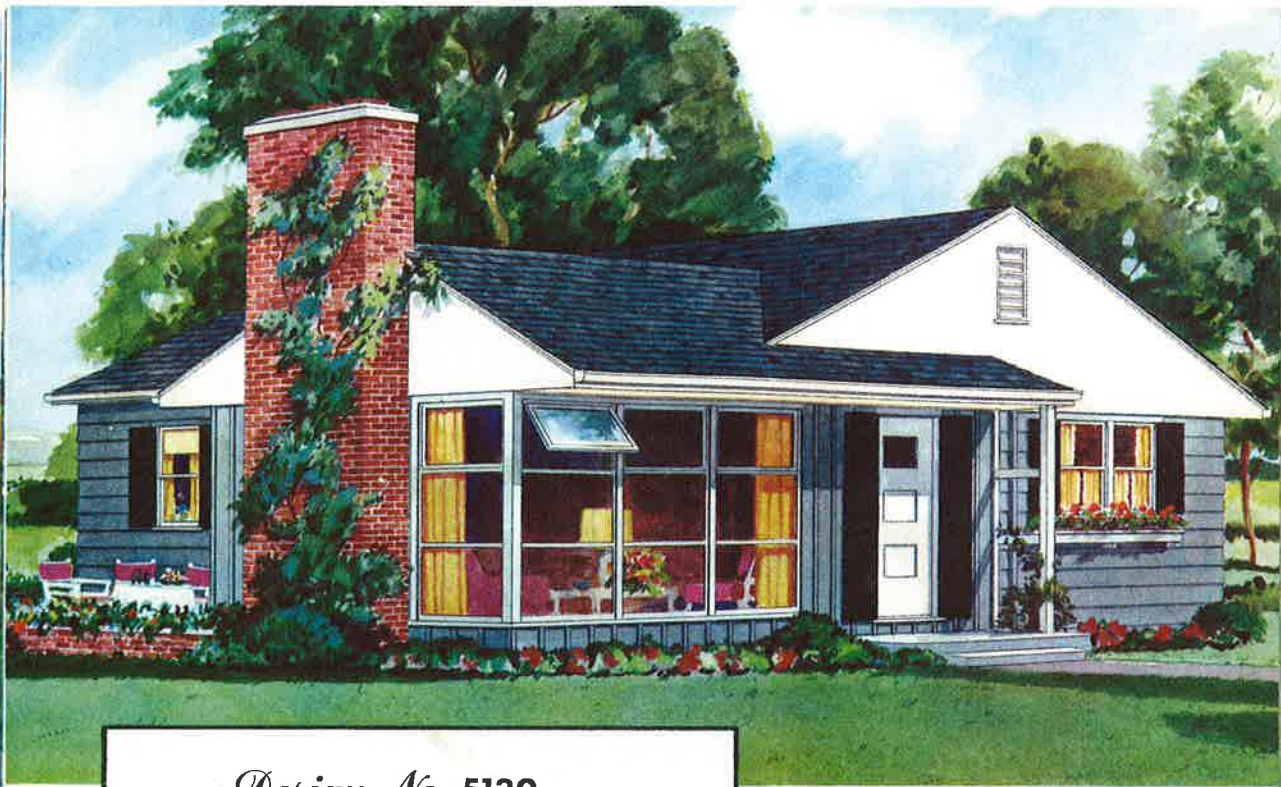
Design No. 5127
FIVE ROOMS—ONE STORY

•
Dimensions: 36'-4" x 24'-0"

•
16,780 Cubic Feet
872 Square Feet



● The front entrance expresses the spirit of the entire house. It is beautiful—it is hospitable. The handy vestibule closet, the spacious living room, the bright and cheery dinette fulfil the inviting promises of the exterior.



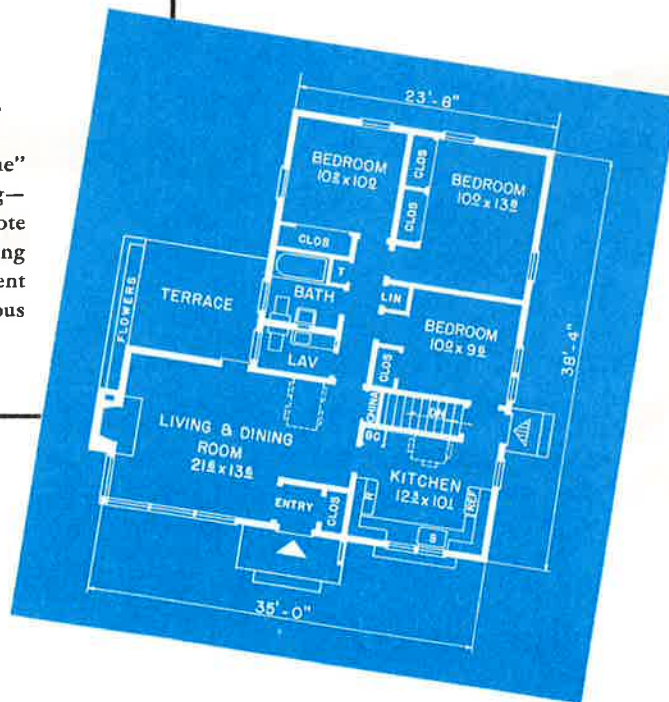
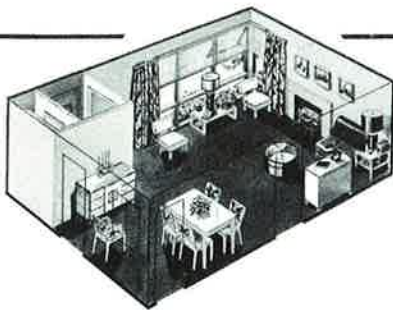
Design No. 5139

FIVE ROOMS • ONE STORY

Overall Dimensions: 37'-0" x 38'-4"

20,668 Cubic Feet—1,069 Square Feet

Features that make a "house" a "home" are the result of professional planning—skillfully expressed in this design. Note the brightly lighted, spacious living-dining room with adjoining terrace, the efficient kitchen, the double bath and the generous wardrobe and storage space.

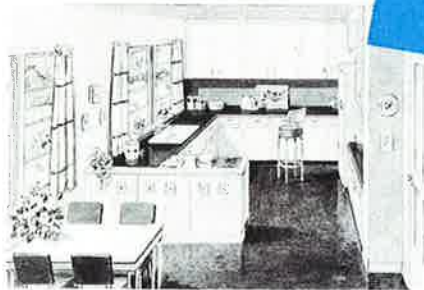
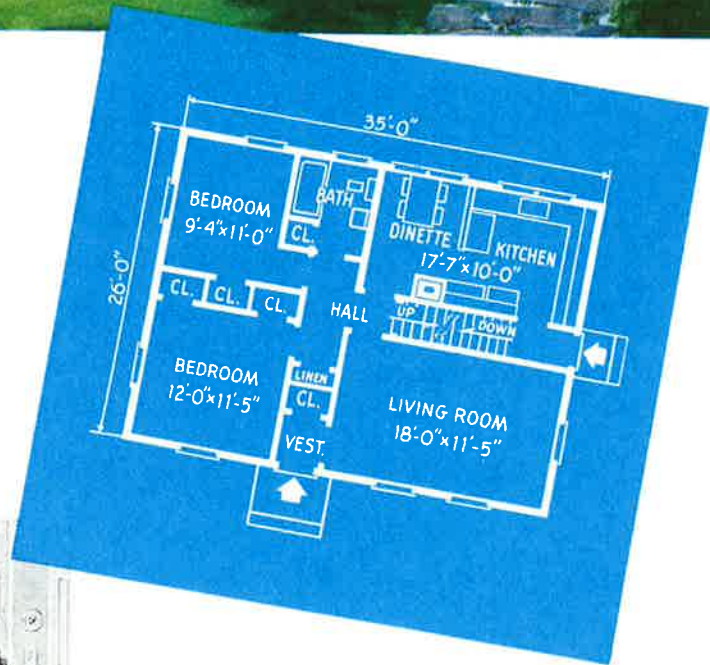




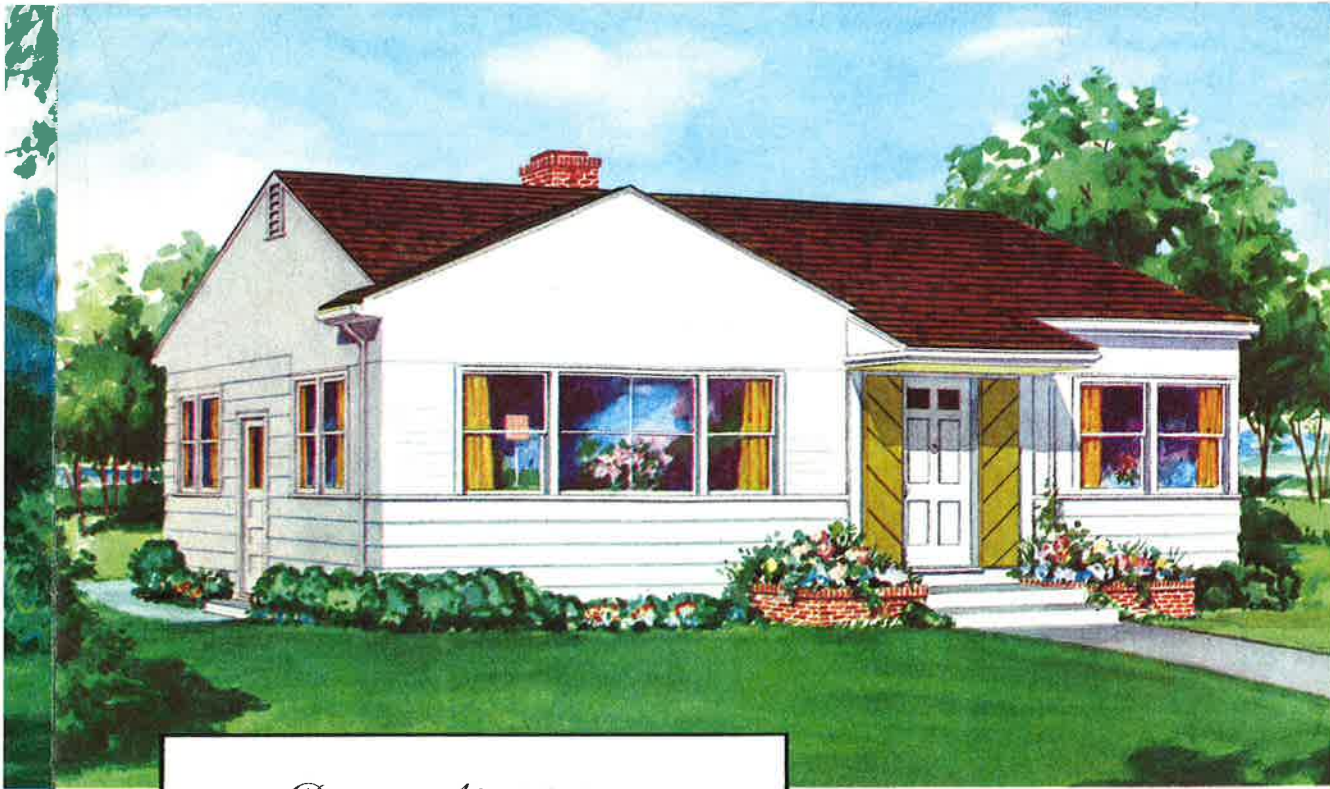
Design No. 4130
FOUR ROOMS—ONE STORY

•
Dimensions: 35'-0" x 26'-0"

•
20,020 Cubic Feet
910 Square Feet



● Here is a home for pleasant, orderly, uncrowded living. And as the family grows, there's ample unfinished space upstairs waiting for easy conversion into a third bedroom and lavatory.



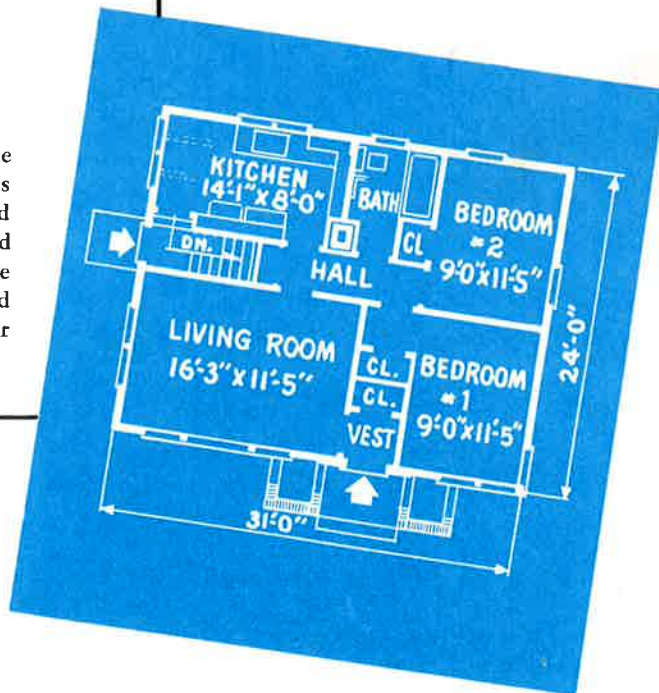
Design No. 4132

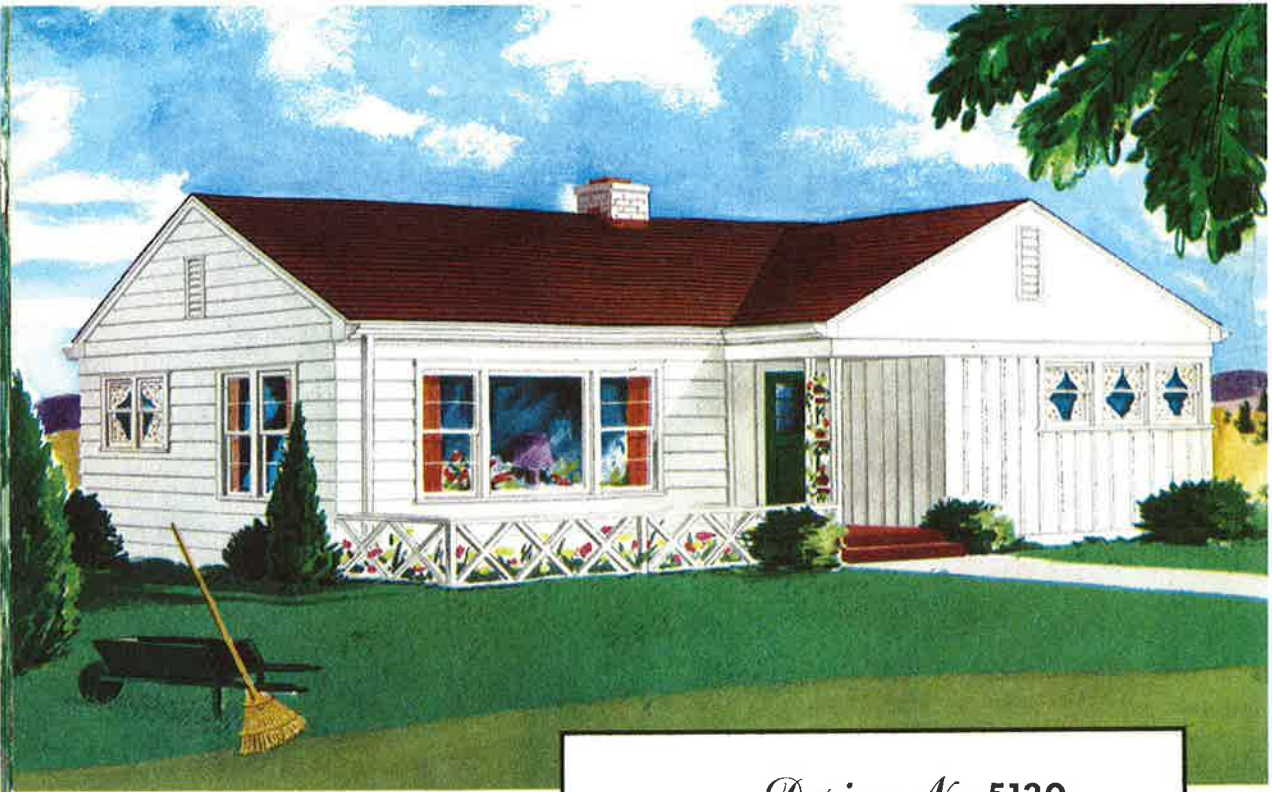
FOUR ROOMS • ONE STORY

Dimensions: 31'-0" x 24'-0"

14,560 Cubic Feet—744 Square Feet

The simple, inviting lines of this home set it apart from the ordinary. With its rectangular shape, economical to build and heat, the architect has fully utilized all available floor area. Note how the window areas have been wisely located—not only for beauty but to allow for good furniture placements.





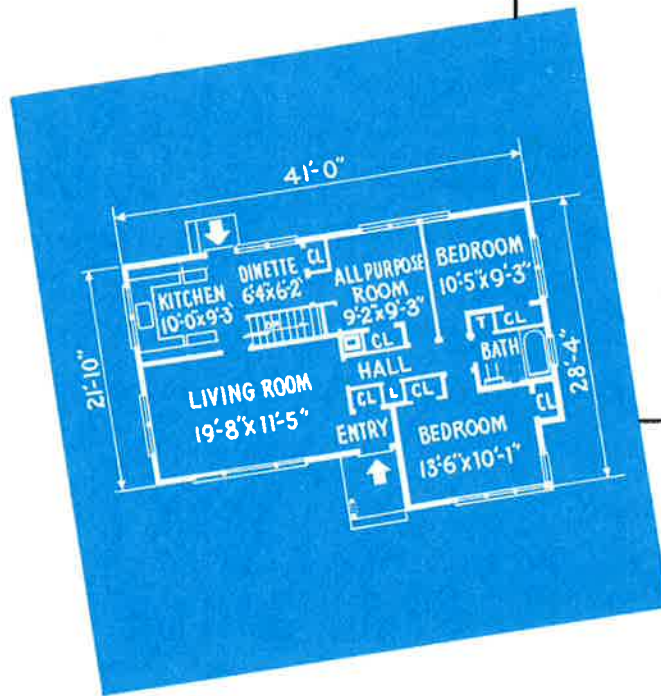
Design No. 5130

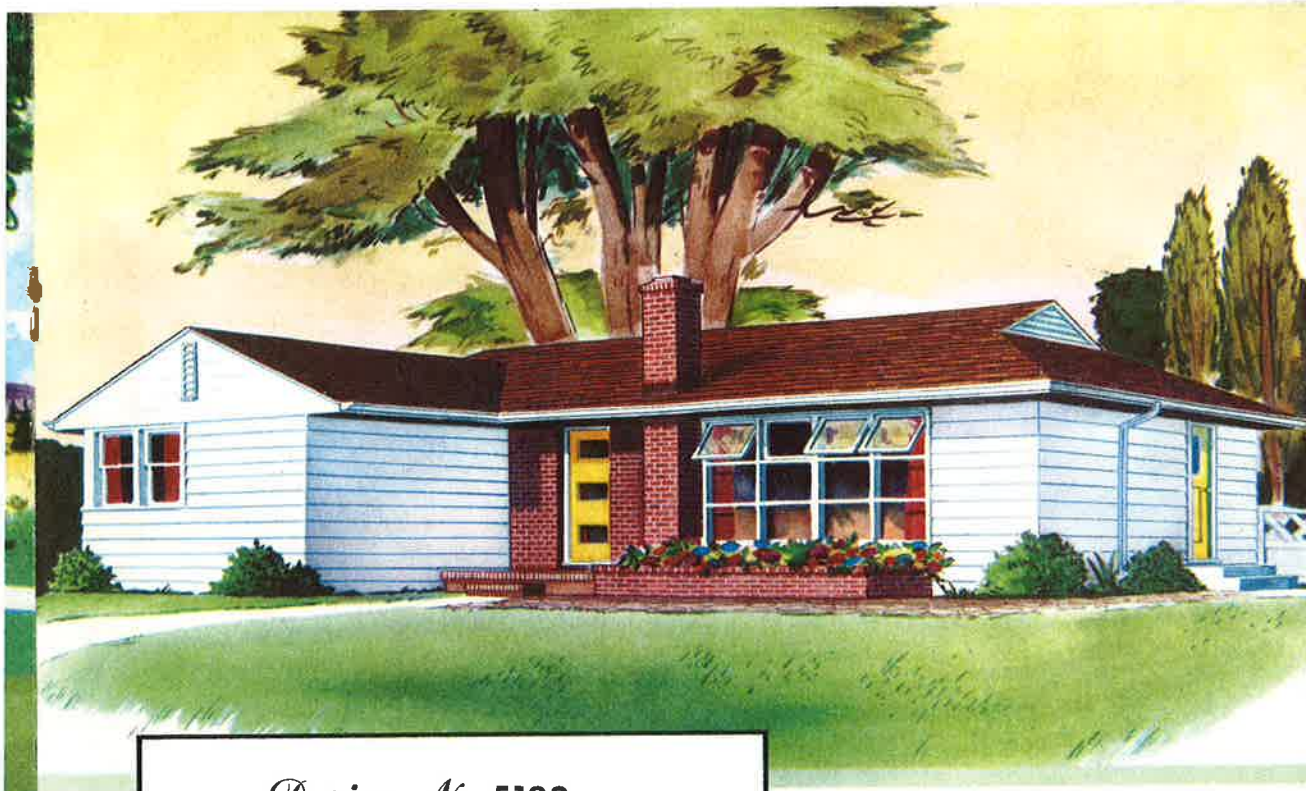
FIVE ROOMS • ONE STORY

Dimensions: 41'-0" x 28'-4"

19,280 Cubic Feet—988 Square Feet

The architect has skilfully blended durable wood in vertical and horizontal application, with flush siding in the front gable, to give an interesting, modern flavor to this attractive home. The step-saving convenience of the U-shaped kitchen, the cheery dinette, and the spacious living room are examples of good planning. An alternate basementless plan is available.





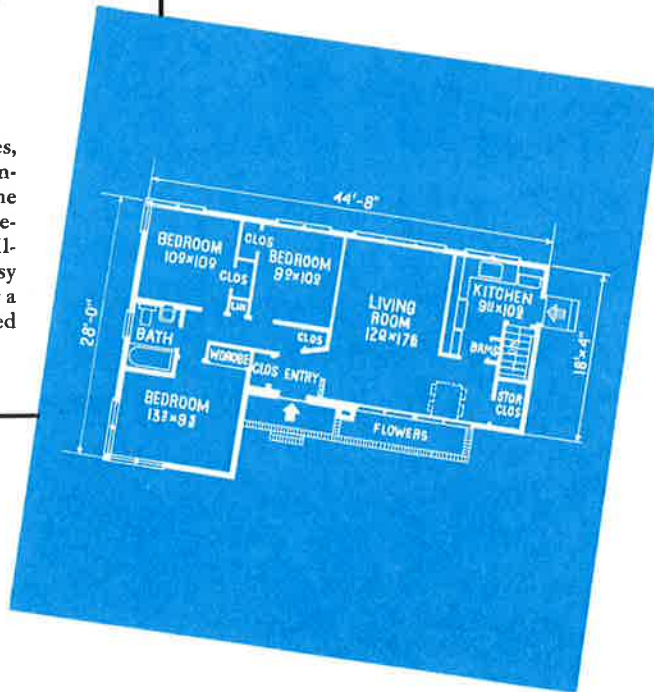
Design No. 5133

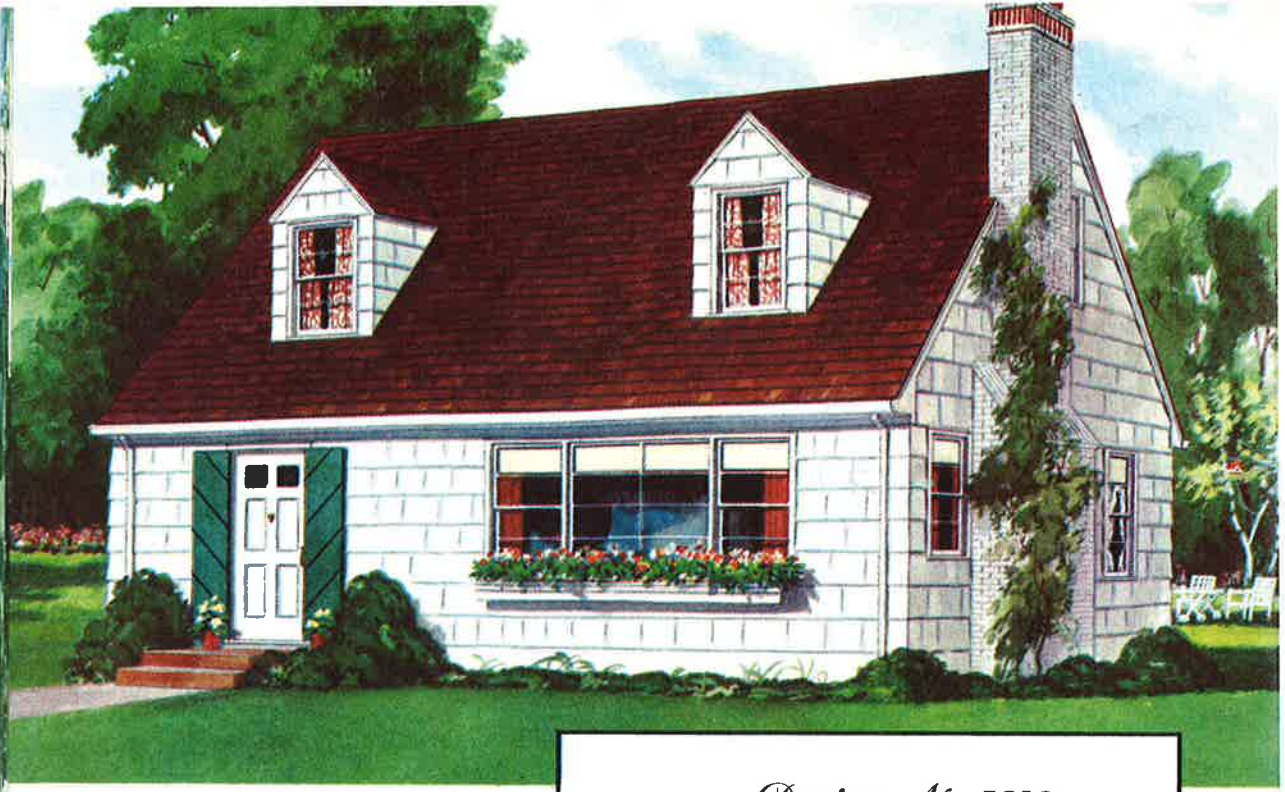
FIVE ROOMS • ONE STORY

Dimensions: 44'-8" x 28'-0"

17,627 Cubic Feet—955 Square Feet

Long and low, with many exciting features, this distinctive rambler combines the enduring elements of good design with the wise selection of modern building materials. The L-shape plan, with rooms skilfully arranged, is tailored for the busy housewife. Suggested alternate plans for a basementless variation and for an attached garage are available.





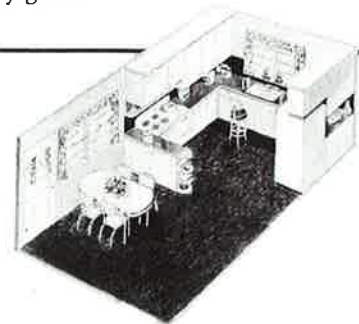
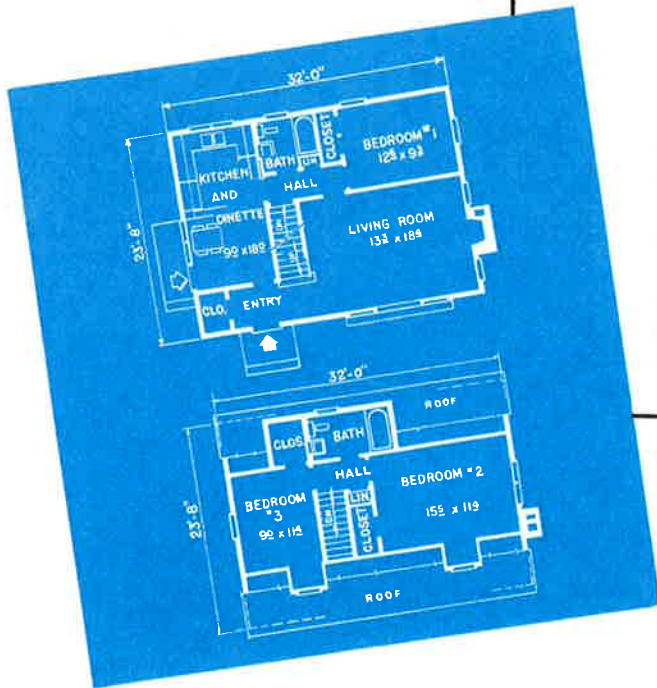
Design No. 5210

FIVE ROOMS • TWO STORY

Dimensions: 32'-0" x 23'-8"

17,926 Cubic Feet—1,242 Square Feet

This design is especially popular among young families. The first floor is a complete unit in itself—with living room, kitchen-dinette, one bedroom and bath. The second floor, designed for two additional bedrooms and bath, may be finished immediately, or later as the family grows.



Design No. 4121

FOUR ROOMS—ONE STORY

•
Dimensions as illustrated:

56'-0" x 29'-7"

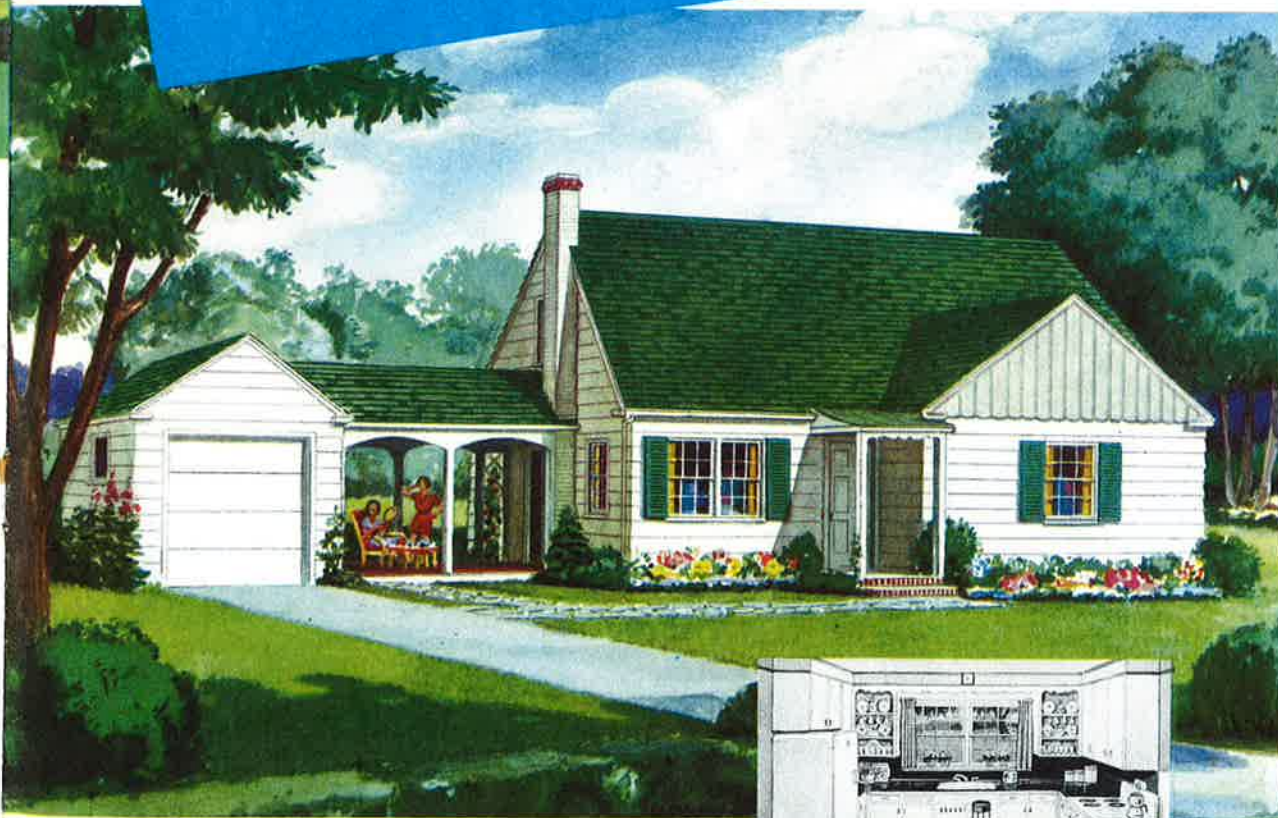
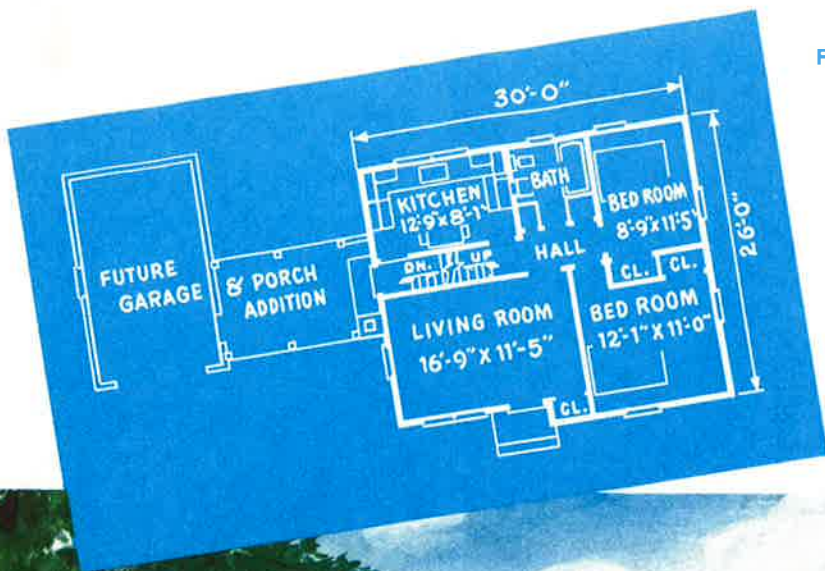
19,064 Cubic Feet

Dimensions of House Only:

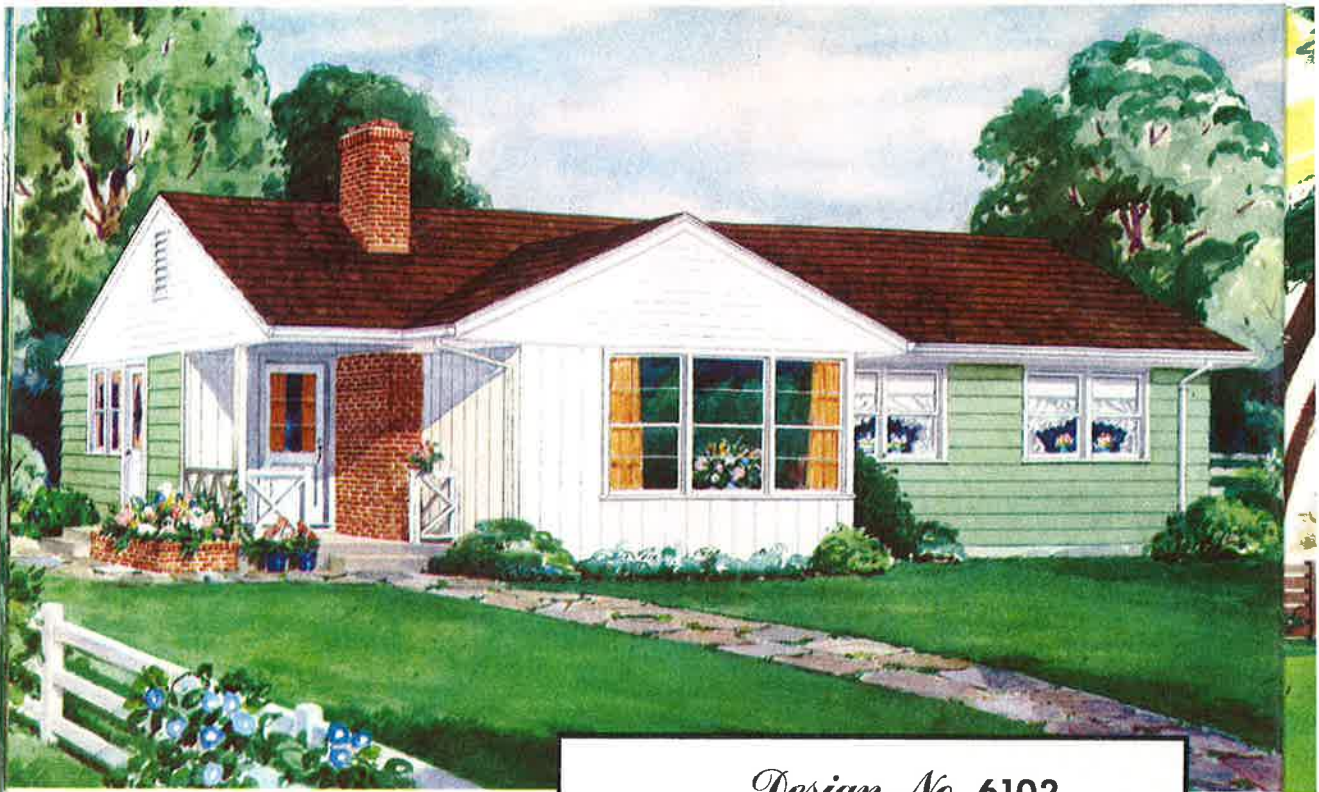
30'-0" x 26'-0"

16,850 Cubic Feet

753 Square Feet



● This design was developed so that, if desirable, the house alone may be built first. Then, as circumstances permit, the garage and breezeway can be added. This interesting feature appeals to many families.



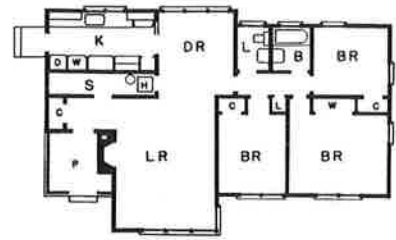
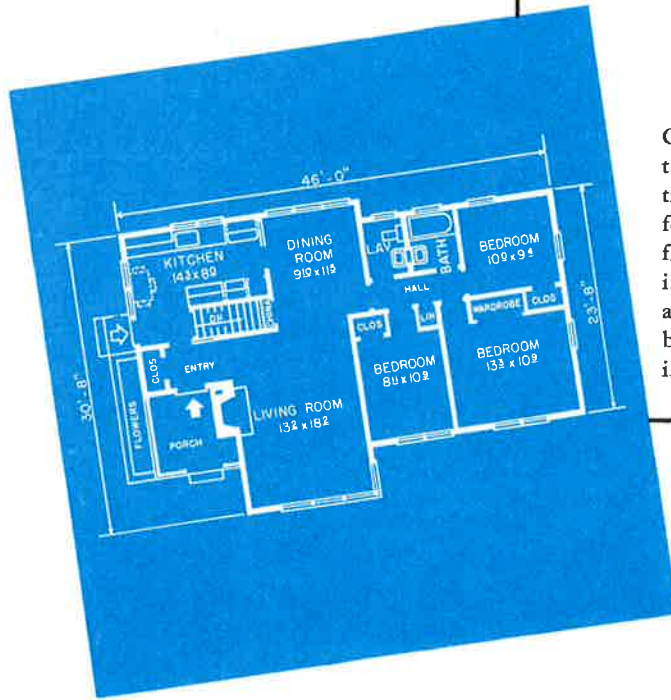
Design No. 6102

SIX ROOMS • ONE STORY

Dimensions: 46'-0" x 30'-8"

22,925 Cubic Feet—1,226 Square Feet

Good space planning and sound architectural styling, reflecting modern trends, are combined with many "luxury" features in this attractive design . . . the friendly fireplace, a built-in china cabinet, an efficient corridor type kitchen and a handy divided bath. A suggested basementless alternate floor plan is illustrated below.





Design No. 4144

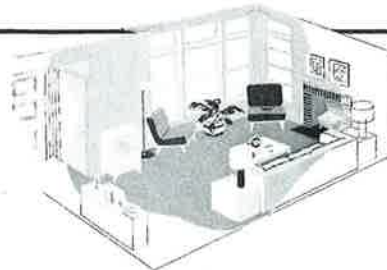
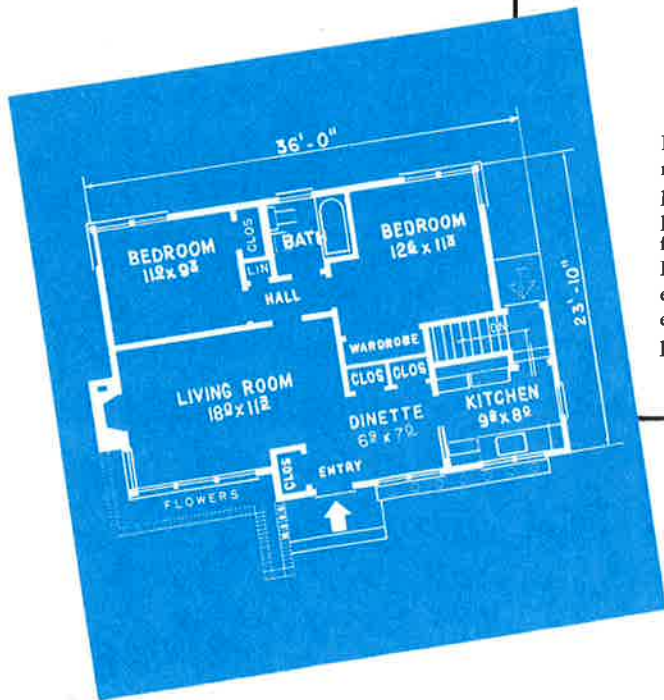
FOUR ROOMS • ONE STORY

Dimensions: 36'-0" x 23'-10"

14,691 Cubic Feet—785 Square Feet

Dramatically new, this home combines modern, attractive simplicity with efficient, practical arrangement. Skillful interior planning provides an atmosphere of cheerful spaciousness.

For the family preferring a traditional exterior, while enjoying the same convenient interior arrangement, the architect has prepared a gable roof alternate design.





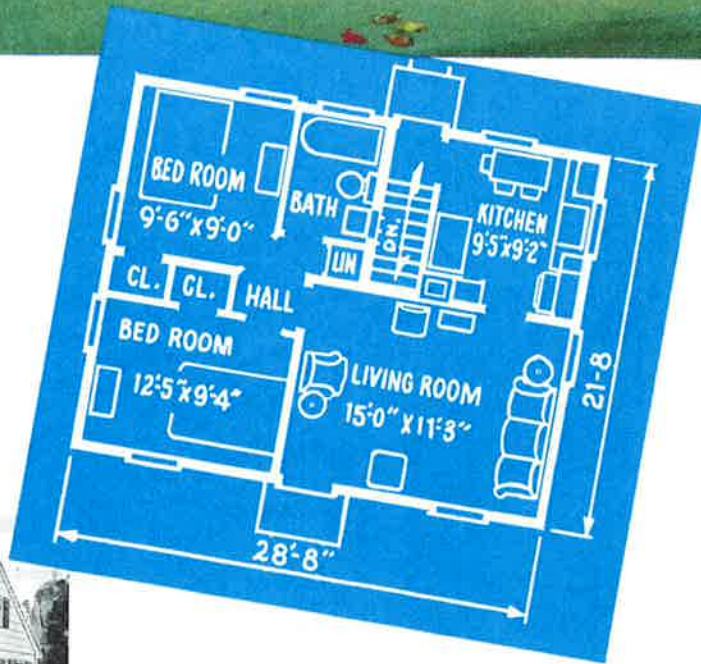
Design No. 41-A

FOUR ROOMS—ONE STORY

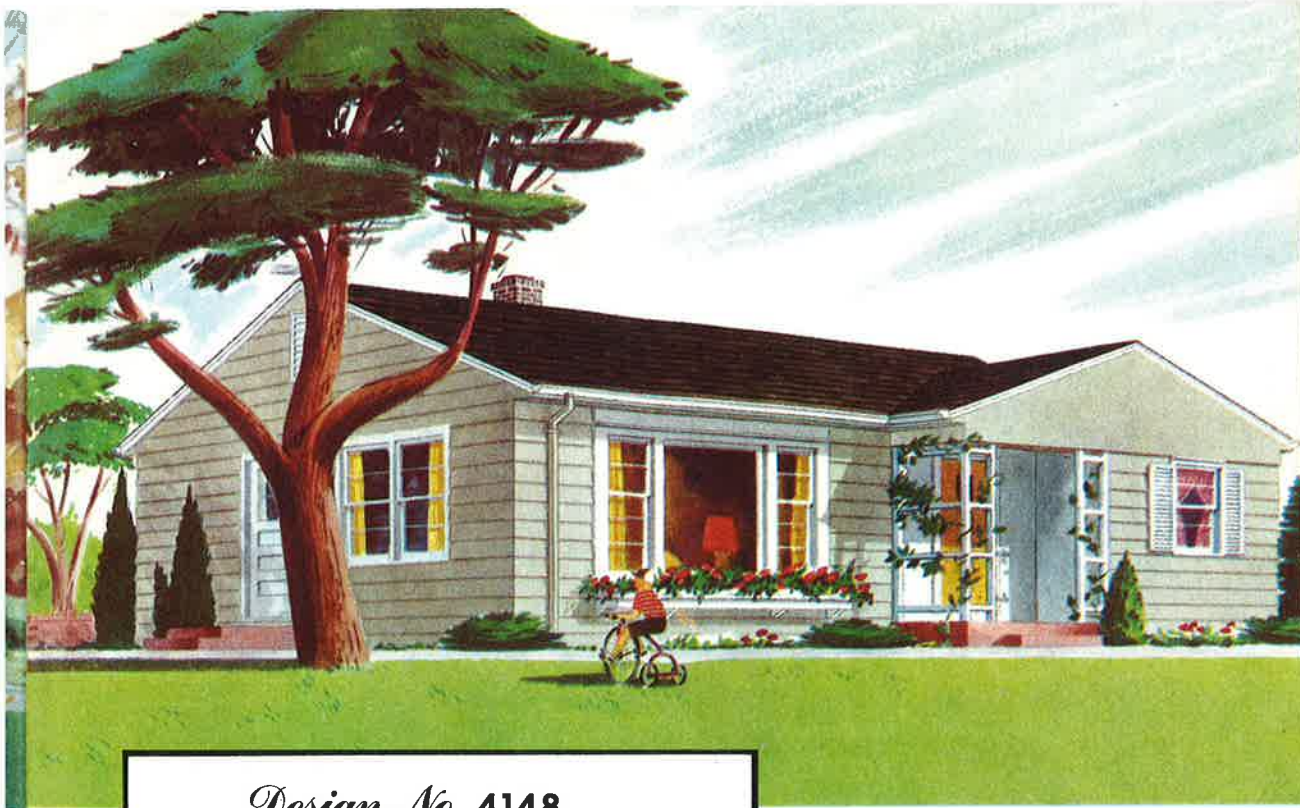
•
 Dimensions: 28'-8" x 21'-8"

•
 12,515 Cubic Feet
 621 Square Feet

•
 VARIATION—NO. 41-A-6



● This home illustrates how a tiny plan can be a miniature gem of design. Note the pleasing harmony of window openings, and the dignity of the front entrance. It's a small house—but a beautiful house.



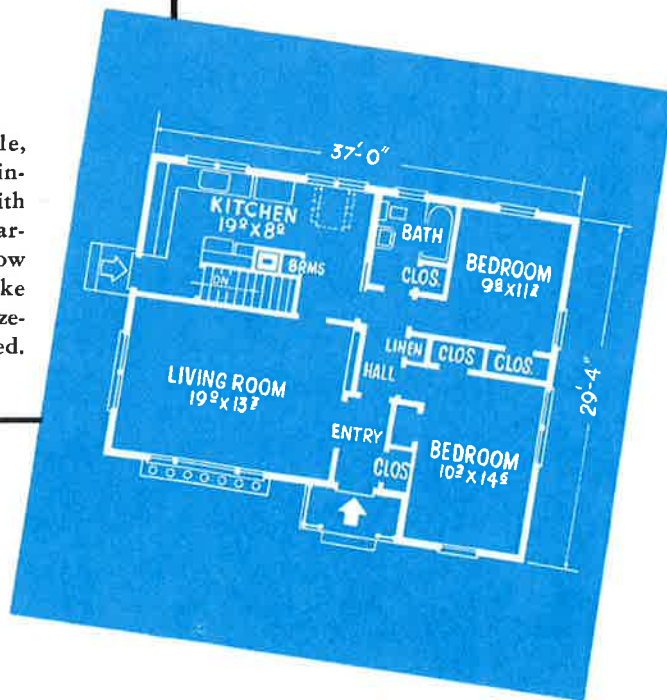
Design No. 4148

FOUR ROOMS • ONE STORY

Dimensions: 37'-0" x 29'-4"

19,522 Cubic Feet—992 Square Feet

The instant appeal of this simple, beautiful home is the result of combining traditional Colonial elements with modern design features. Efficiently arranged storage space, generous window areas, and the central hallway make housekeeping a joy. If desired, a breezeway and garage may be easily added.





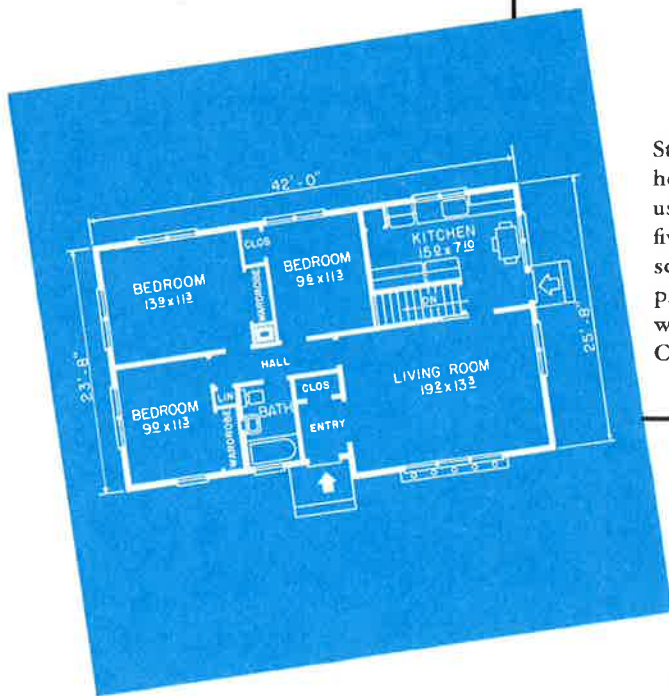
Design No. 5136

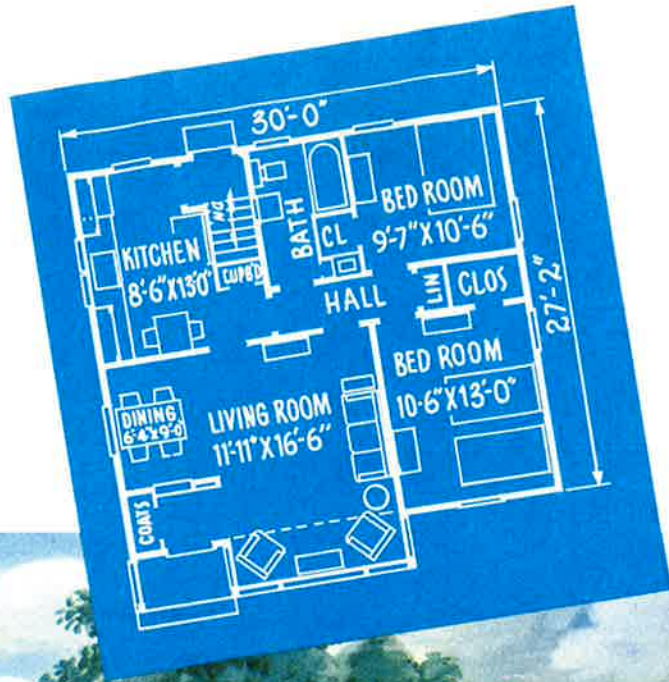
FIVE ROOMS • ONE STORY

Dimensions: 42'-0" x 25'-8"

18,691 Cubic Feet—1,034 Square Feet

Stimulating and dramatic is this modern home. The architect has made skillful use of all available space to provide five commodious rooms within 1,034 square feet. The wide roof projection provides summer shade and is painted white to contrast with the Western Red Cedar siding.





Design No. 41-M
FOUR ROOMS—ONE STORY

•
Dimensions: 30'-0" x 30'-8"

•
16,700 Cubic Feet
850 Square Feet



● If you are among those who prefer the traditional in exterior home design, but want the benefit of modern interior planning, you will enjoy studying this design. Practically square, this home is easy to heat as well as to build.



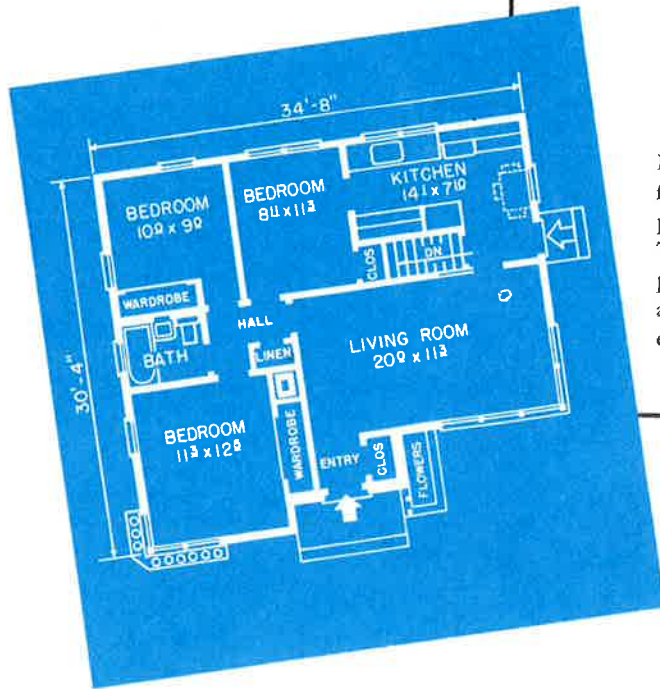
Design No. 5134

FIVE ROOMS • ONE STORY

Dimensions: 34'-8" x 30'-4"

18,190 Cubic Feet—938 Square Feet

Every feature of this pleasing home reflects the value of practical, professional planning for comfort and convenience. The architect has developed a compact plan with simplicity of line . . . creating a house that is economical to erect and easy to heat, ventilate, and maintain.





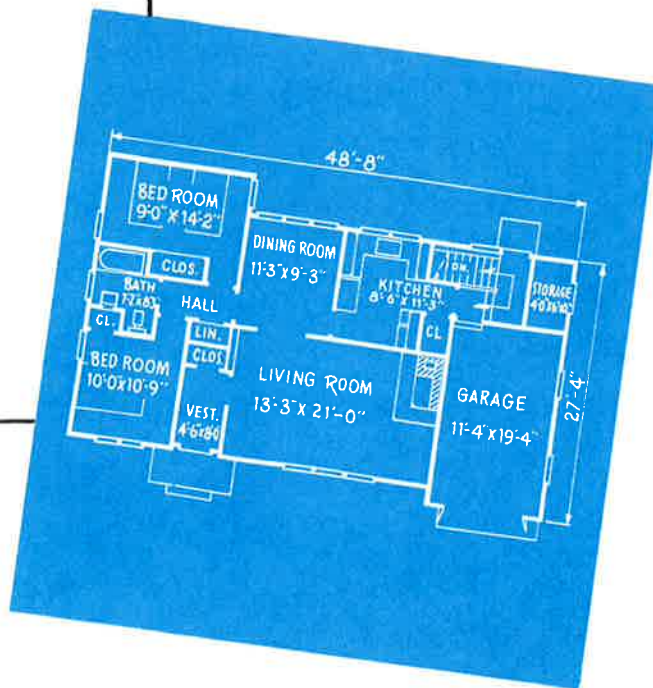
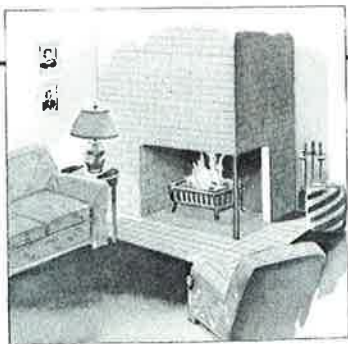
Design No. 5118

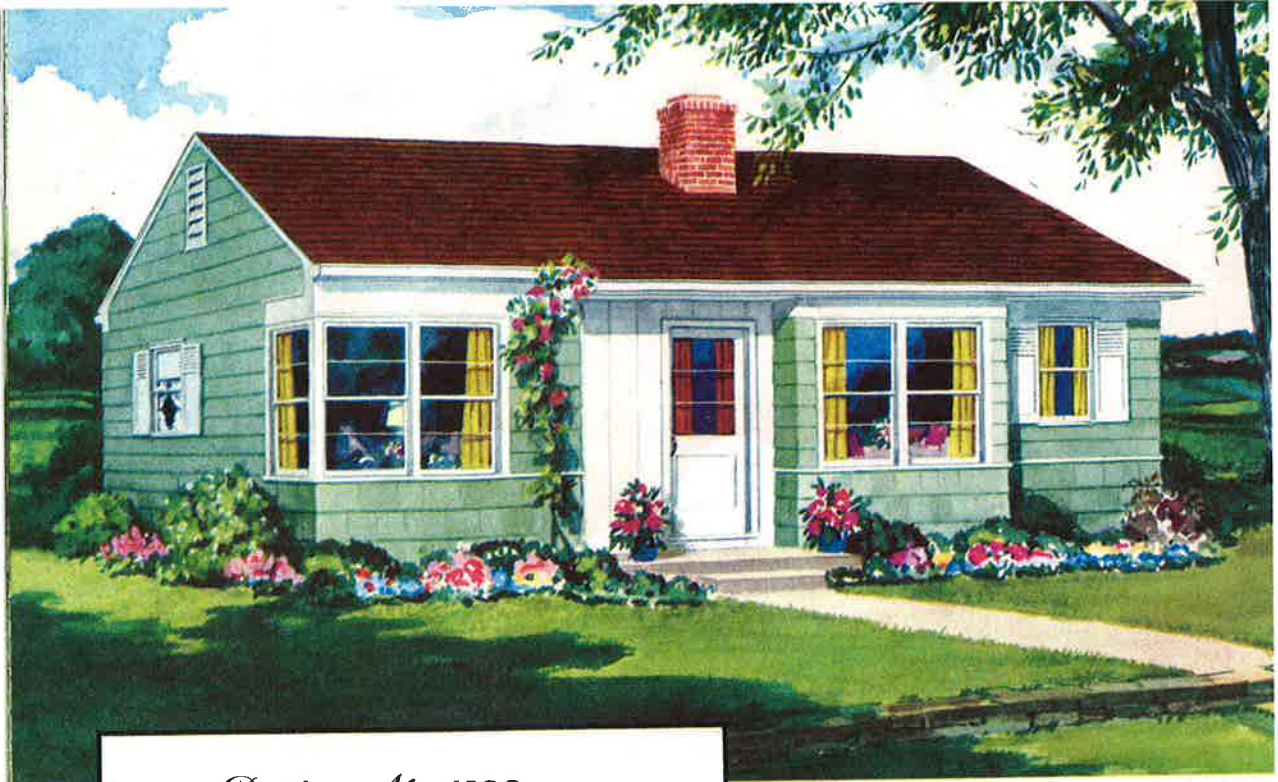
FIVE ROOMS • ONE STORY

Dimensions: 48'-8" x 31'-4"

25,260 Cubic Feet—1,093 Square Feet

The strong horizontal lines of this design, together with the attached garage, create an appearance of spaciousness. The architect has adhered to principles that time has established as guides to true and lasting beauty. From the efficient U-shaped kitchen, to the quiet, comfortable bedrooms, this is a home for pleasant living.





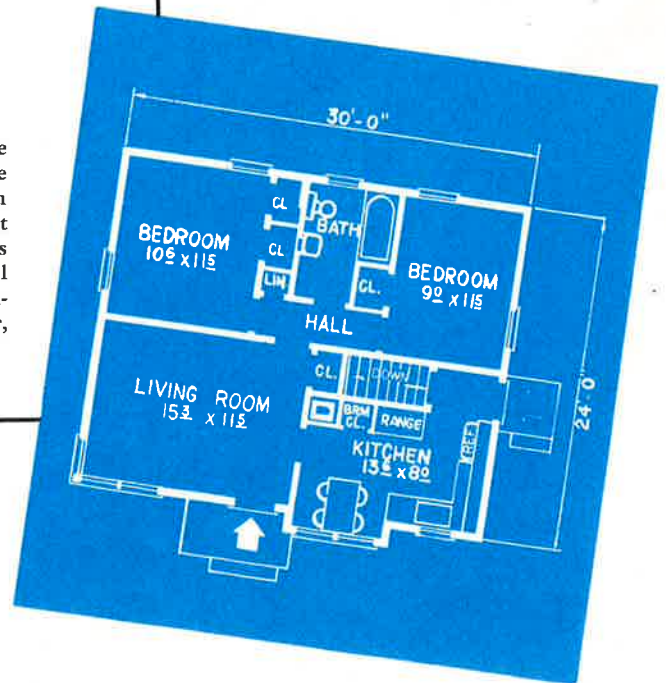
Design No. 4133

FOUR ROOMS • ONE STORY

Dimensions: 24'-0" x 30'-0"

13,500 Cubic Feet—720 Square Feet

Charming in appearance, this home reveals care in planning for genuine livability. From the distinctive Western red cedar shingle siding to the efficient step-saving kitchen, you will find this home far more than "just another small home." If required, an additional bedroom can be finished on the second floor, as shown in the alternate plan.



From the forest comes Lumber, America's best and most economical building material. A forest is a living, growing resource. As mature trees are harvested, a new growth of trees takes the place of the old.

Modern forestry management, as practiced by Weyerhaeuser and other producers, treats timber as a crop and the forests as tree farms. Through planned logging programs which promote and safeguard timber regrowth . . . through improved control of fire, insects, and disease, we are approaching the time when timber growth will equal or surpass timber harvest.



As one of the large producers of lumber and other building products, Weyerhaeuser desires to help the users of those products obtain better buildings by recommending the correct selection and application of lumber in construction. There are certain fundamentals of good design and good construction which, when followed, result in truly livable homes of lasting durability and low maintenance costs.

To illustrate these fundamentals . . . to help home planners to secure such benefits in the homes they build, the Weyerhaeuser 4-Square Home Building Service was developed. Feel free to use this Service at the office of your retail lumber dealer.

TIMBER
IS A CROP,
GROWING
LUMBER FOR
TOMORROW



BETTER HOMES
THROUGH
CORRECT
USE OF WOOD



Masterpieces

**OF
PROFESSIONAL
PLANNING**



from the

Weyerhaeuser 4-Square Home Building Service