



Modern Living
HOMES

**NEW
EDITION**

THE CHANDLER & MAPS COMPANY, Inc.

Established 1890

Building Materials of Quality

"Service & Satisfaction"

Telephones:

Long Branch 6 - 2700 - 2701

70 South Broadway

LONG BRANCH, N. J.

The "Rambler"

leads in National popularity

★ Modern living is exemplified by the tremendously popular one-story home. Its convenience, beauty, and efficiency are instantly recognized by the modern home builder and the homes shown on the following pages have been designed and engineered to present for your consideration a wide range of "Rambler" type homes.

★ Notice the many conveniences and innovations that these homes offer. Most of them provide a superabundance of sunlight and ventilation, achieved through the use of picture, bay and corner windows. Homes of this type are singularly adapted to the many modern advancements in millwork and other building materials. Most of the homes in this book could be classified as the rambling type, yet each has a decided individuality of its own. All of these homes have three things in common . . . attractiveness, economy, and efficiency. Efficiency and economy in the construction of these homes are achieved by:

- (1) Efficient engineering of the plans for use of stock lumber sizes and standardized materials and equipment.
- (2) Dimensioning of plans for use of framing lumber in even lengths, thereby minimizing waste of material and labor.
- (3) Engineering for the use of modular millwork and other modular coordinate products.

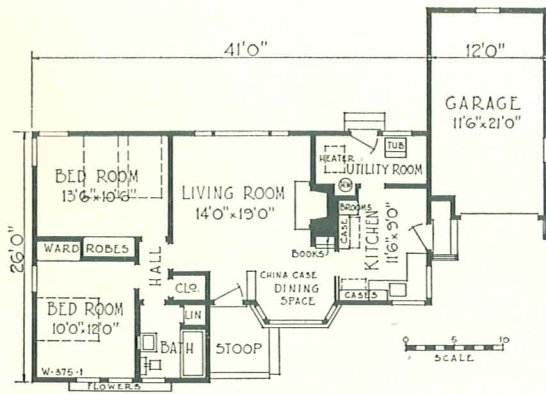
★ Study the designs and floor plans carefully for they contain many innovations that have been carefully worked out by experienced specialists in home design and construction. It is our hope that the home which will bring your family the utmost in happiness, health, convenience, and comfort may be among them.

★ We shall consider it a privilege to discuss your home building requirements with you and all of the facilities and materials of our entire organization are at your disposal.

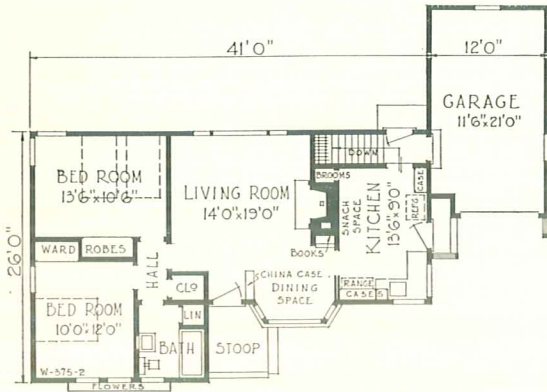


w-375

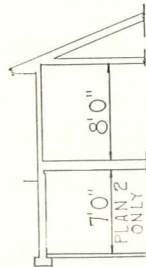
Almost everything one could ask is offered in this Western home design, with its canopied flower box and garage entrance and its very unusual window arrangement. The exterior construction is of wood shingles, with brick employed beneath the large bay at the dining space. An unusual breeze-way effect is created through the design of the kitchen stoop, which adds appreciably to the Ranch atmosphere of this home.



PLAN 1, WITHOUT BASEMENT



PLAN 2, WITH BASEMENT

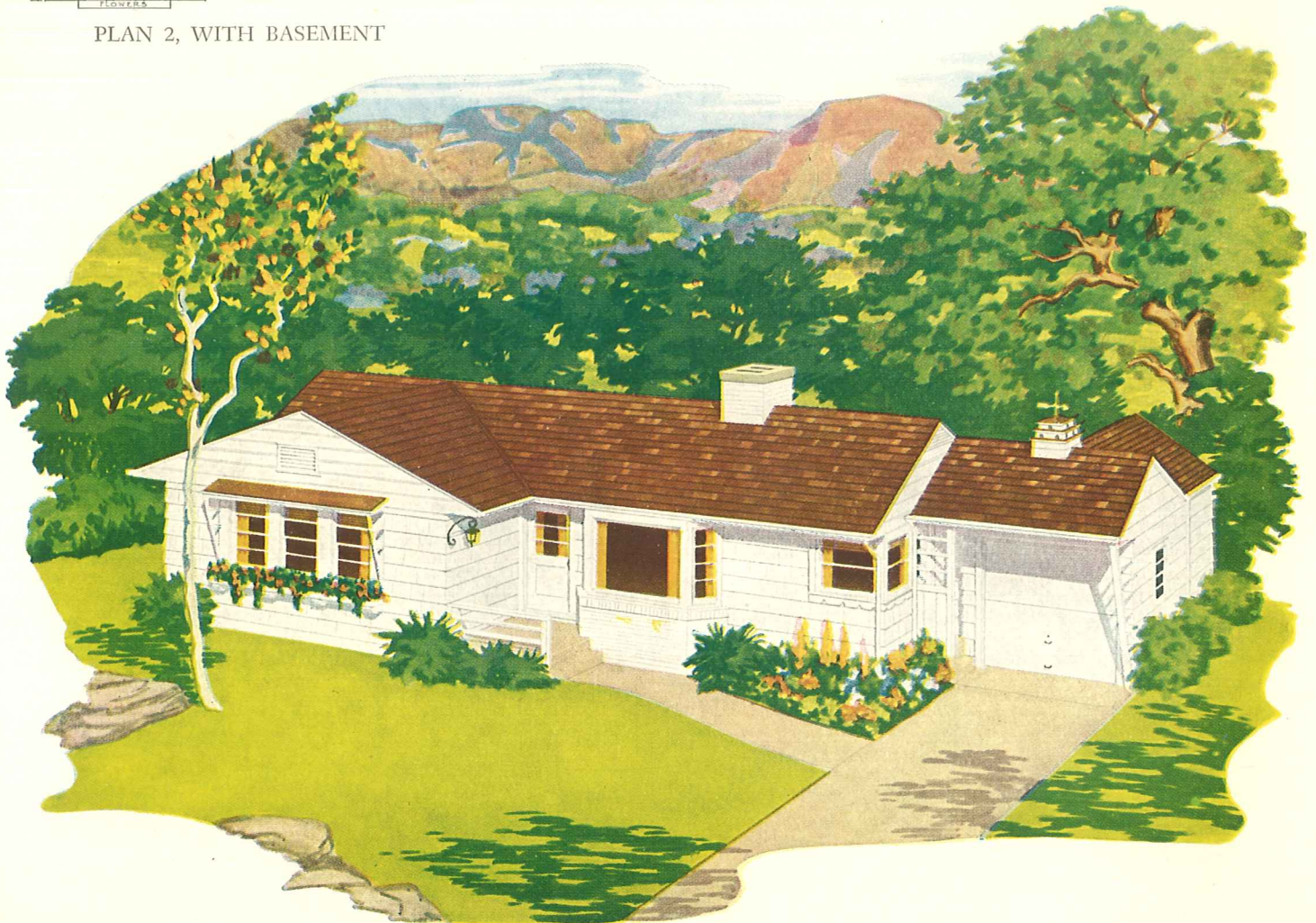


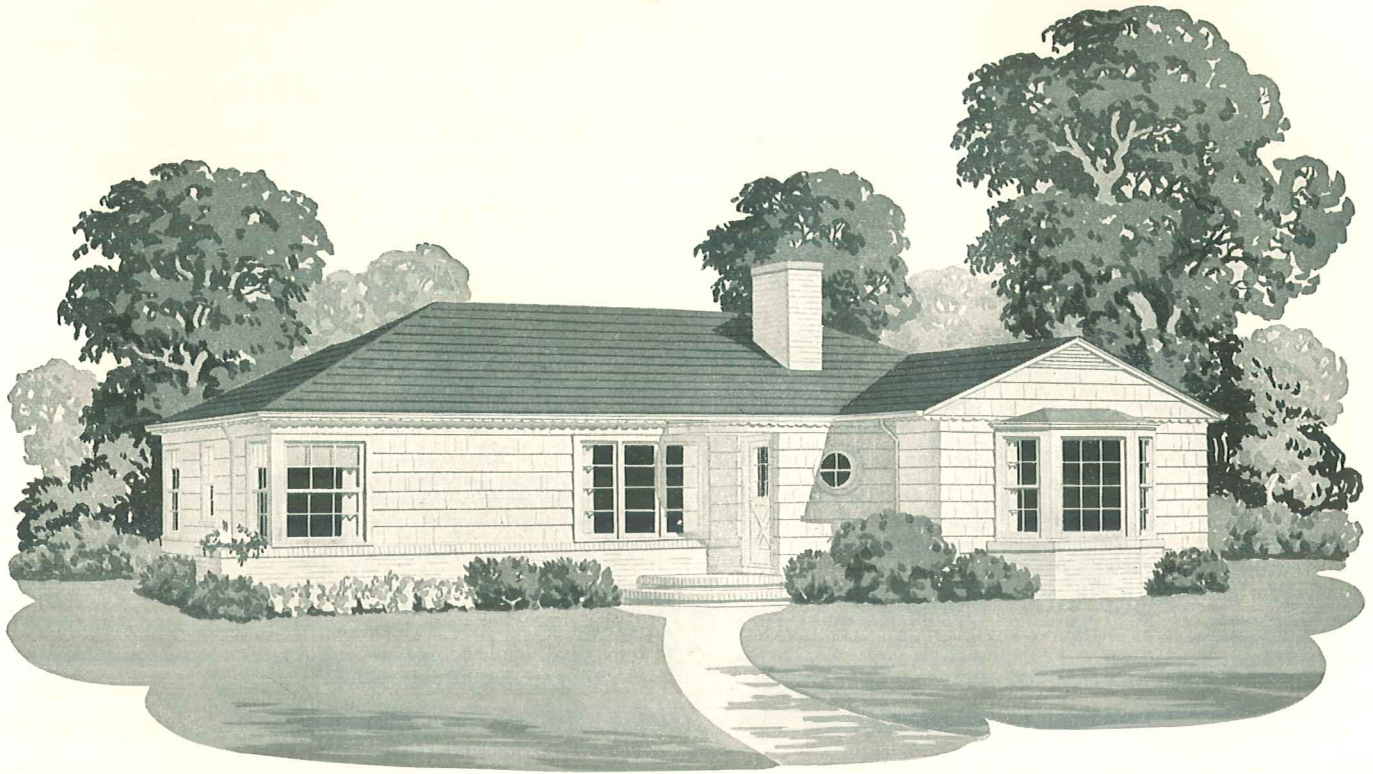
CUBAGE

Plan 1.....	14,580 Cu. Ft.
Plan 2.....	19,300 Cu. Ft.

SQUARE FEET

Living Area,	
Plan 1 and 2.....	900
Garage Area,	
Plan 1 and 2.....	275





w-376



CUBAGE

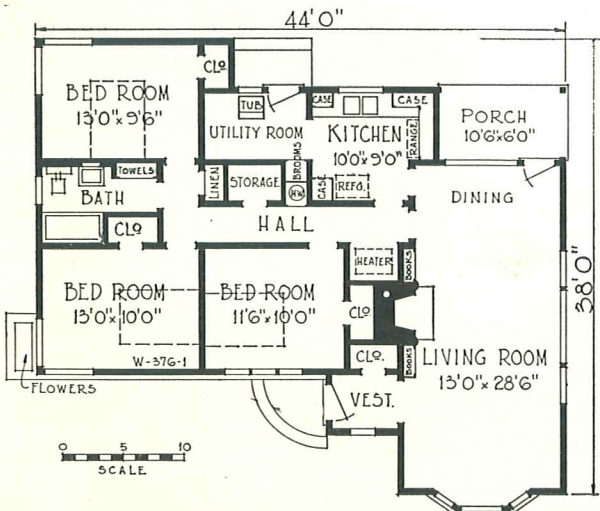
Plan 1..... 16,970 Cu. Ft.
 Plan 2..... 23,140 Cu. Ft.

SQUARE FEET

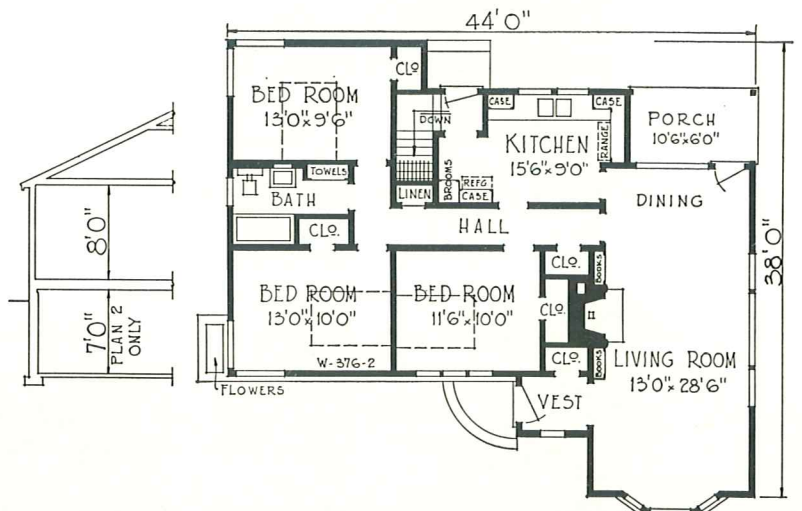
Living Area, Plan 1 & 2..... 1234
 Porch Area, Plan 1 & 2..... 63



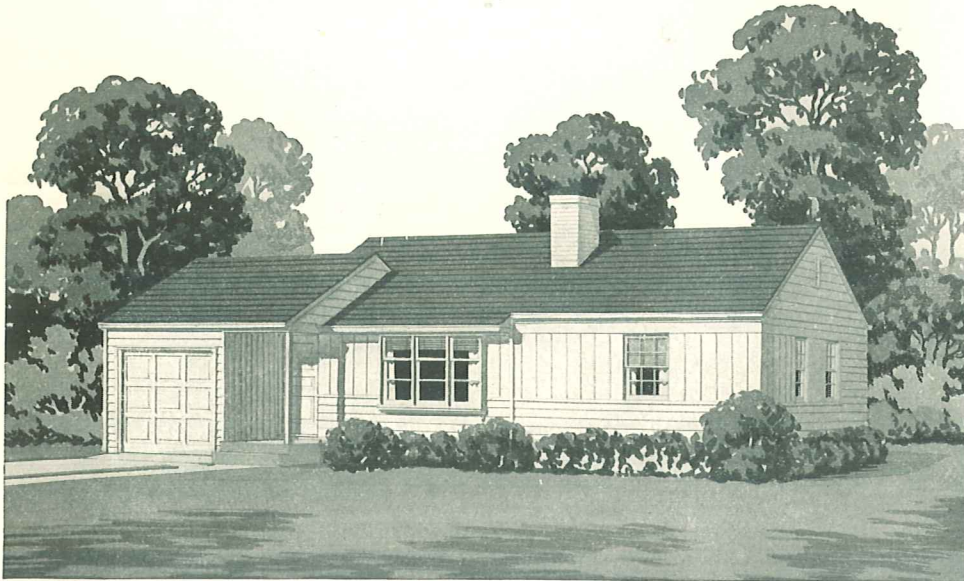
This unusually attractive home employs shingles, combined with brick at the base of the front exterior. The large bay window, the corner windows, and the front bedroom casement windows prove how interesting and inviting a judicious combination of windows may be. The living and dining area extends the entire width of the house, opening on a large porch at the rear. The three bedrooms are all easily accessible through the central hall.



PLAN 1, WITHOUT BASEMENT



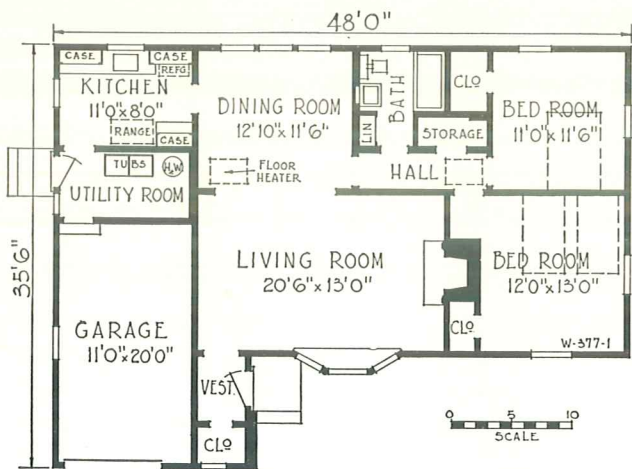
PLAN 2, WITH BASEMENT



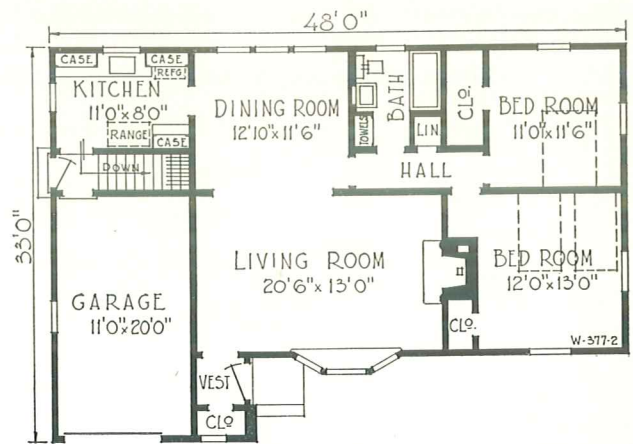
w-377

Both of these home designs have the same floor plan. Each exterior is equally attractive and practical and a choice is given so that you may choose the one to your liking and most suitable to the neighborhood in which you intend to build. Be sure to specify Design A or B, and Plan 1 or 2.

DESIGN A



PLAN 1, WITHOUT BASEMENT



PLAN 2, WITH BASEMENT

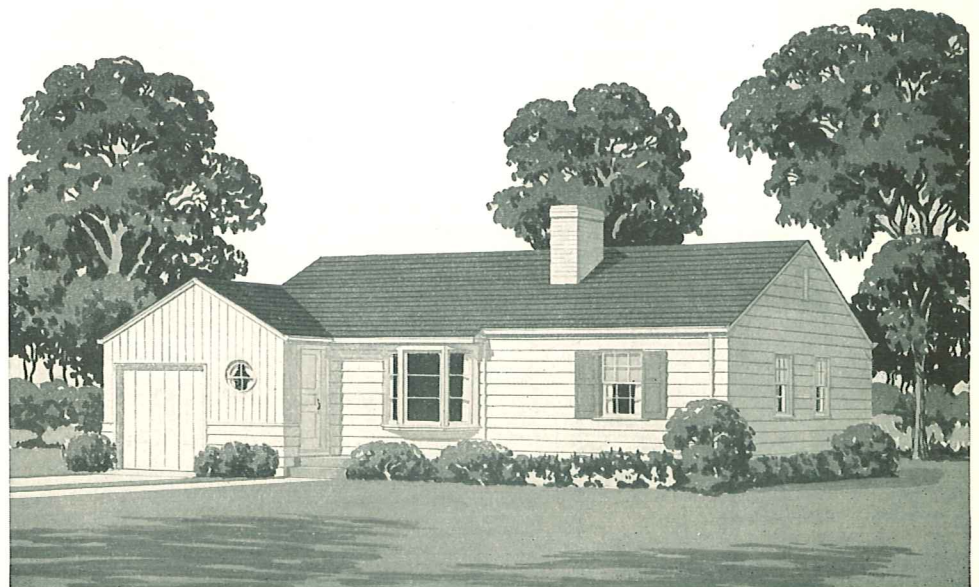
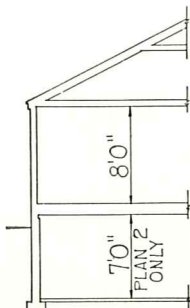


CUBAGE

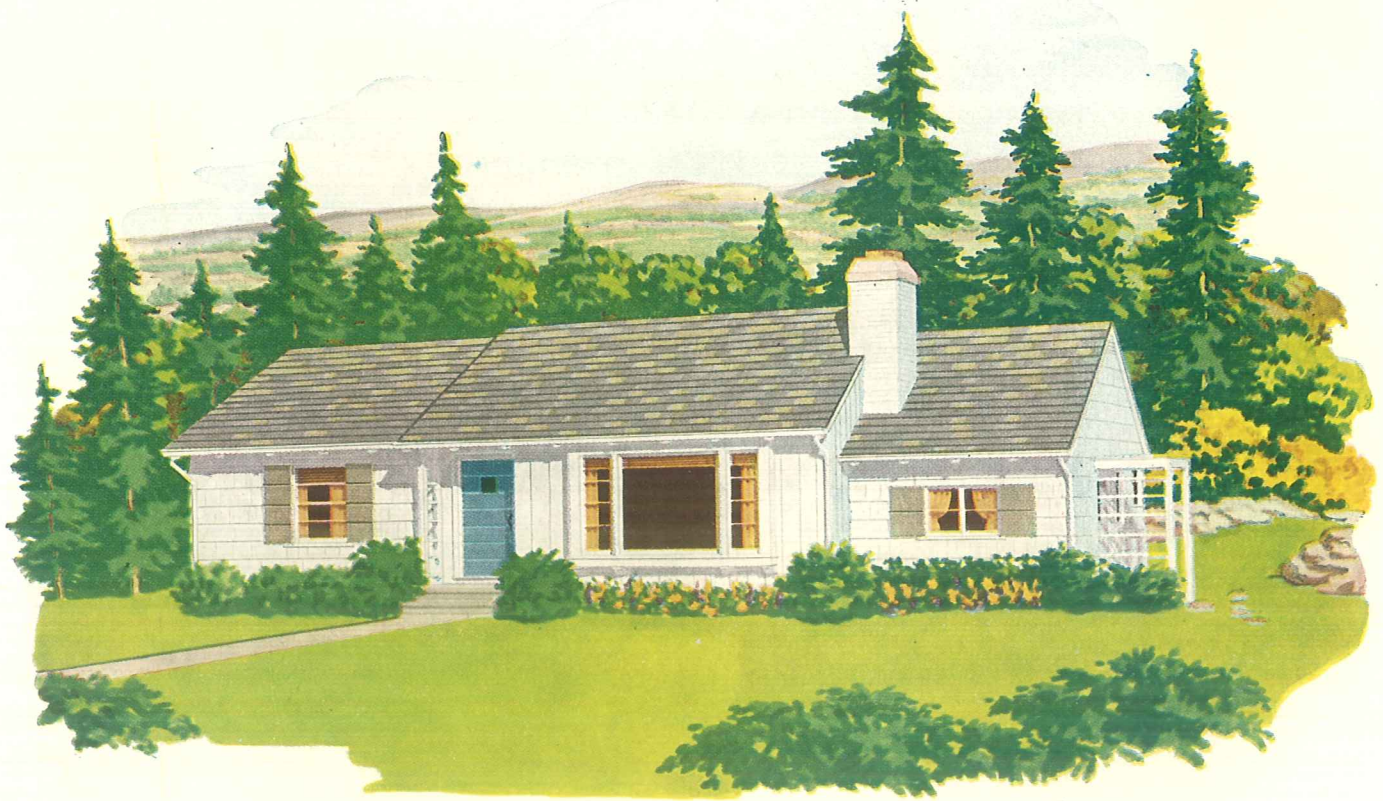
Plan 1.....19,715 Cu. Ft.
 Plan 2.....24,600 Cu. Ft.

SQUARE FEET

Living Area, Plan 1.....1169
 Living Area, Plan 2.....1128
 Garage Area, Plan 1 & 2.. 240

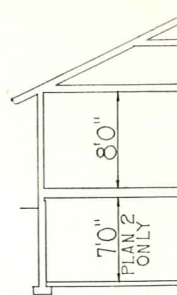


DESIGN B



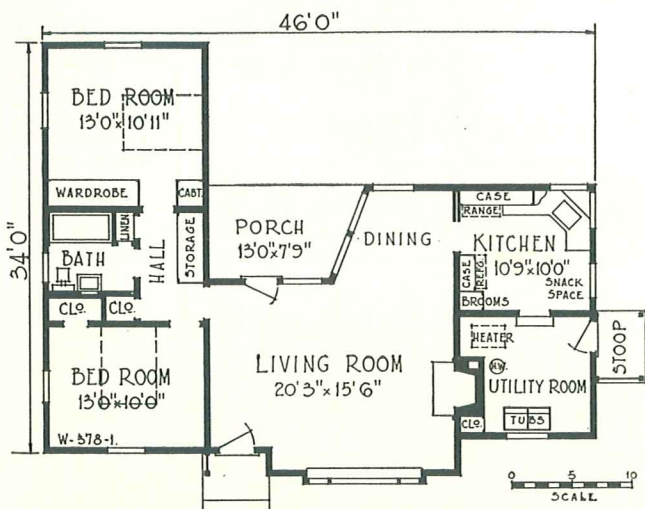
w-378

Vertical siding and wood shingles combine to create the attractive exterior of this rambling home, with a color note introduced through the blue door at the entrance. A large picture window adds to the cheeriness and charm of the huge living-dining room area which, large as it is, is increased during many months of the year by the porch which may be screened or glazed. This home design is available either with or without basement.

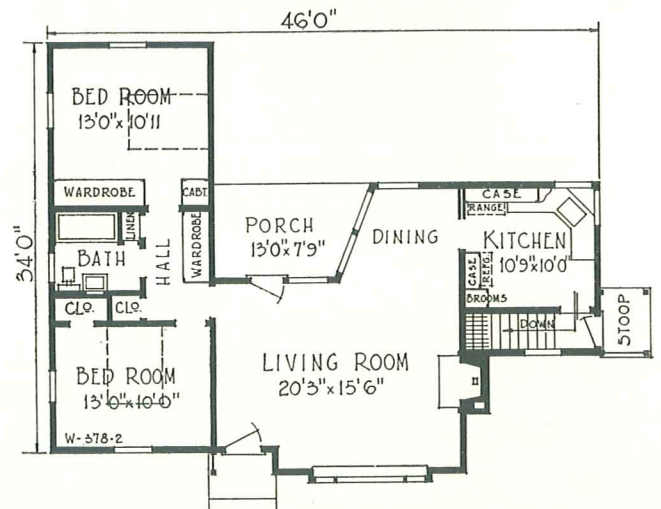


CUBAGE
 Plan 1 15,335 Cu. Ft.
 Plan 2 19,710 Cu. Ft.

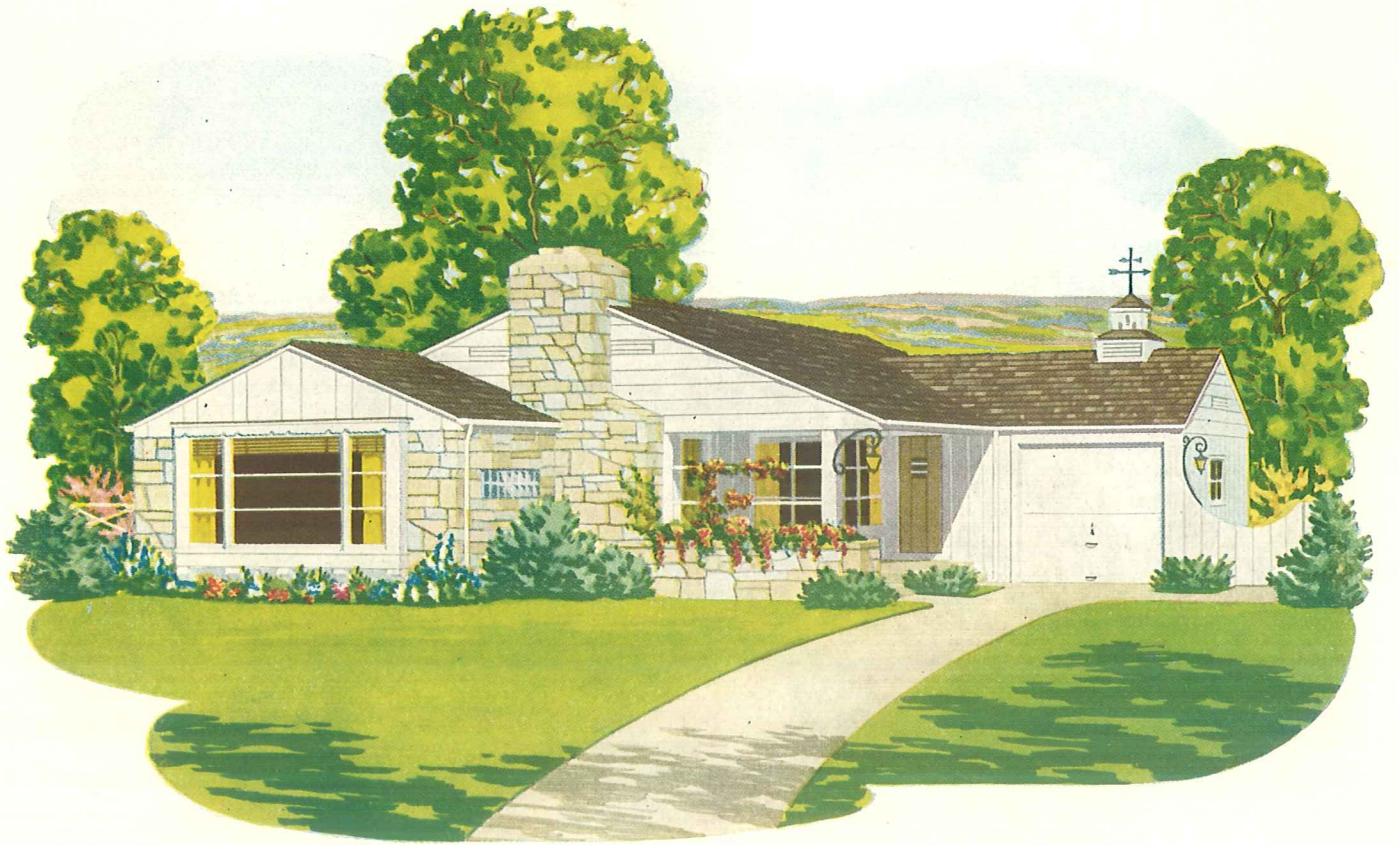
SQUARE FEET
 Living Area,
 Plan 1 1113
 Living Area,
 Plan 2 1036



PLAN 1, WITHOUT BASEMENT

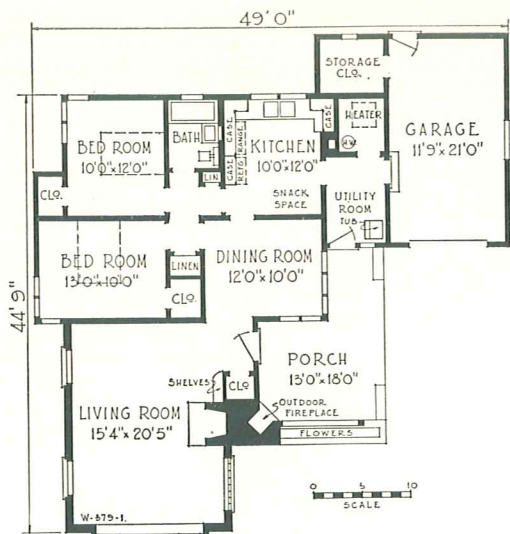


PLAN 2, WITH BASEMENT



w-379

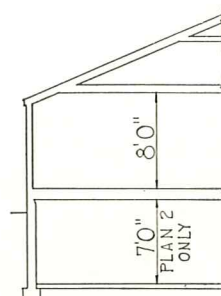
The judicious use of stone can add greatly to the appearance of the exterior of a home, as this design proves. The outdoor fireplace protected by the large porch is an unusual feature that will encourage luxurious outdoor dining. The large picture window bay occupies almost the entire front wall of the living room and both vertical and horizontal siding are employed in the exterior construction. Available with or without basement.



PLAN 1, WITHOUT BASEMENT

CUBAGE

Plan 1.....	20,080 Cu. Ft.
Plan 2.....	25,075 Cu. Ft.

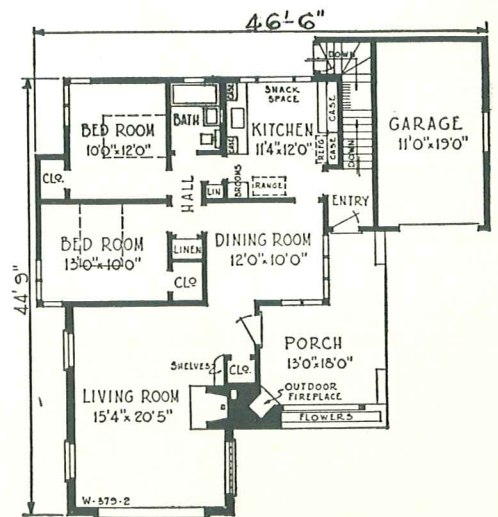


★
SQUARE FEET

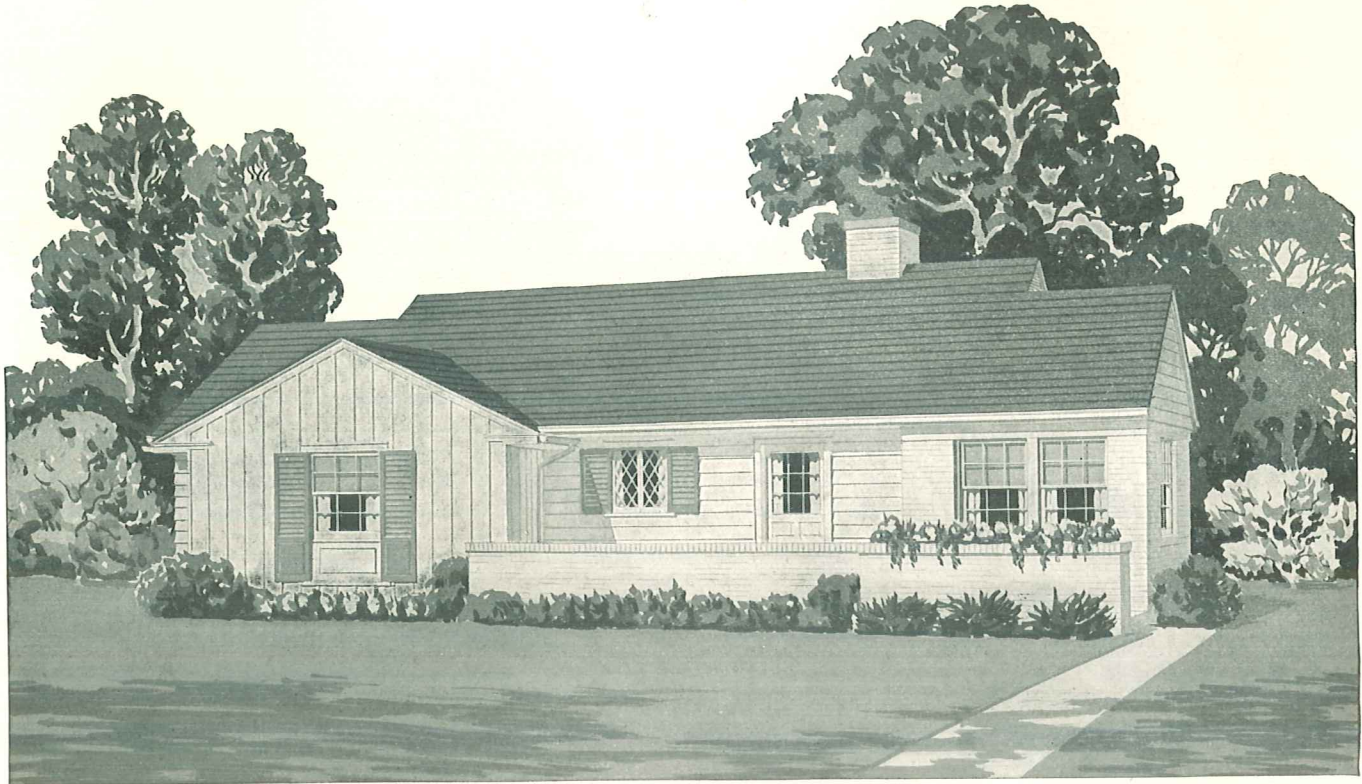
Living Area, Plan 1.....	1224
Living Area, Plan 2.....	1179
Garage Area, Plan 1.....	270
Garage Area, Plan 2.....	230
Porch Area	187



Blueprint plans are available for all homes illustrated.

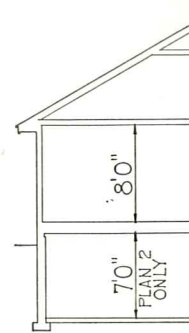


PLAN 2, WITH BASEMENT



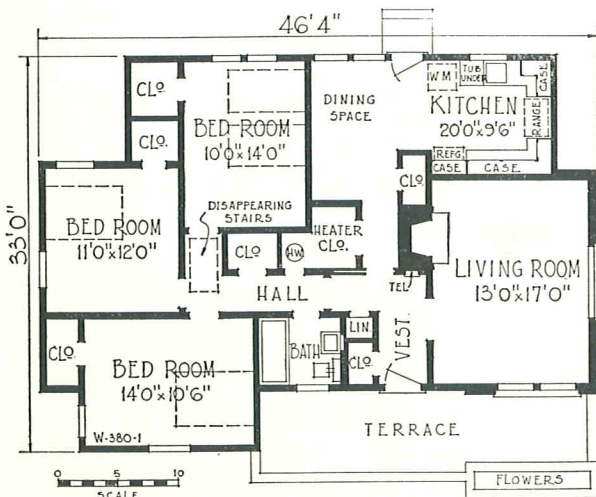
w-380

This three-bedroom ranch type home has a most individual exterior. Vertical and horizontal siding is employed, harmonizing with the brick wall of the terrace and around the entire living room. Plan 1, without basement, features the "U" shape kitchen and Plan 2 the "L" shape. Both provide a large dining space.

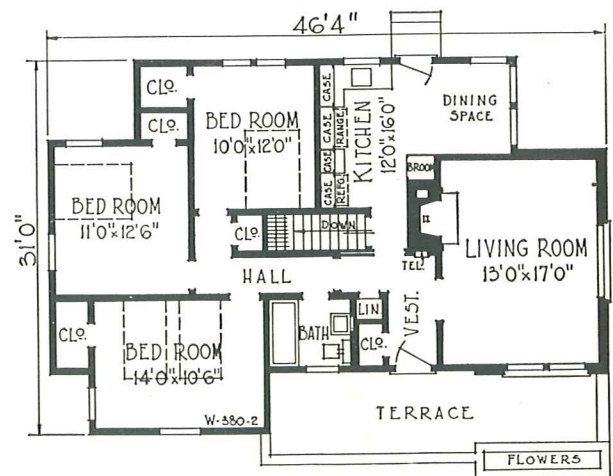


CUBAGE
 Plan 1 .. 19,400 Cu. Ft.
 Plan 2 .. 20,765 Cu. Ft.

SQUARE FEET
 Living Area,
 Plan 1 1283
 Plan 2 1181



PLAN 1, WITHOUT BASEMENT



PLAN 2, WITH BASEMENT



CUBAGE

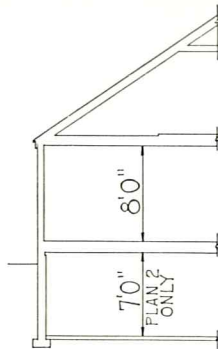
Plan 1 19,415 Cu. Ft.
 Plan 2 22,645 Cu. Ft.

SQUARE FEET

Living Area,
 Plan 1 979
 Plan 2 907

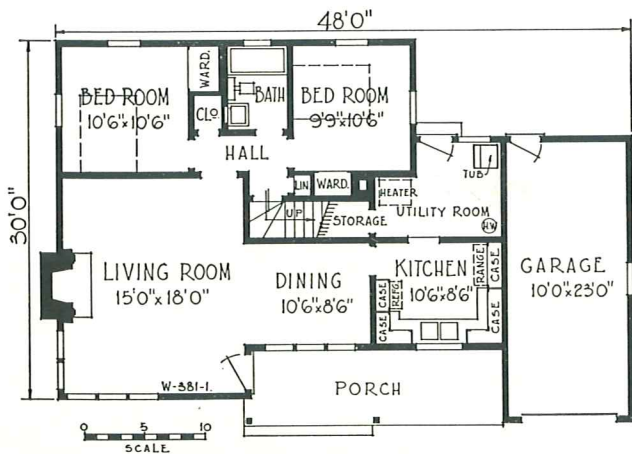
Garage Area,
 Plan 1 255
 Plan 2 225

Porch Area,
 Plan 1 126
 Plan 2 131

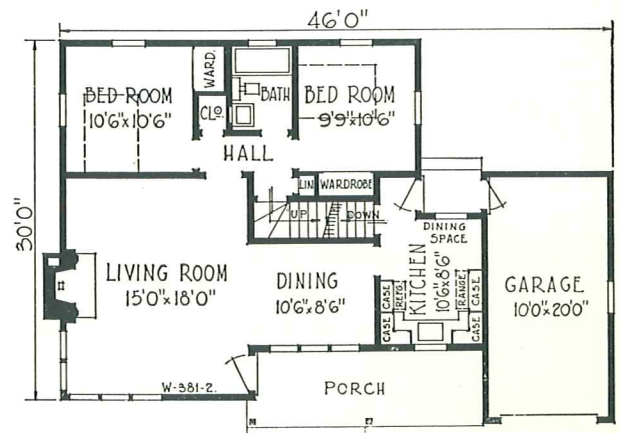


w-381

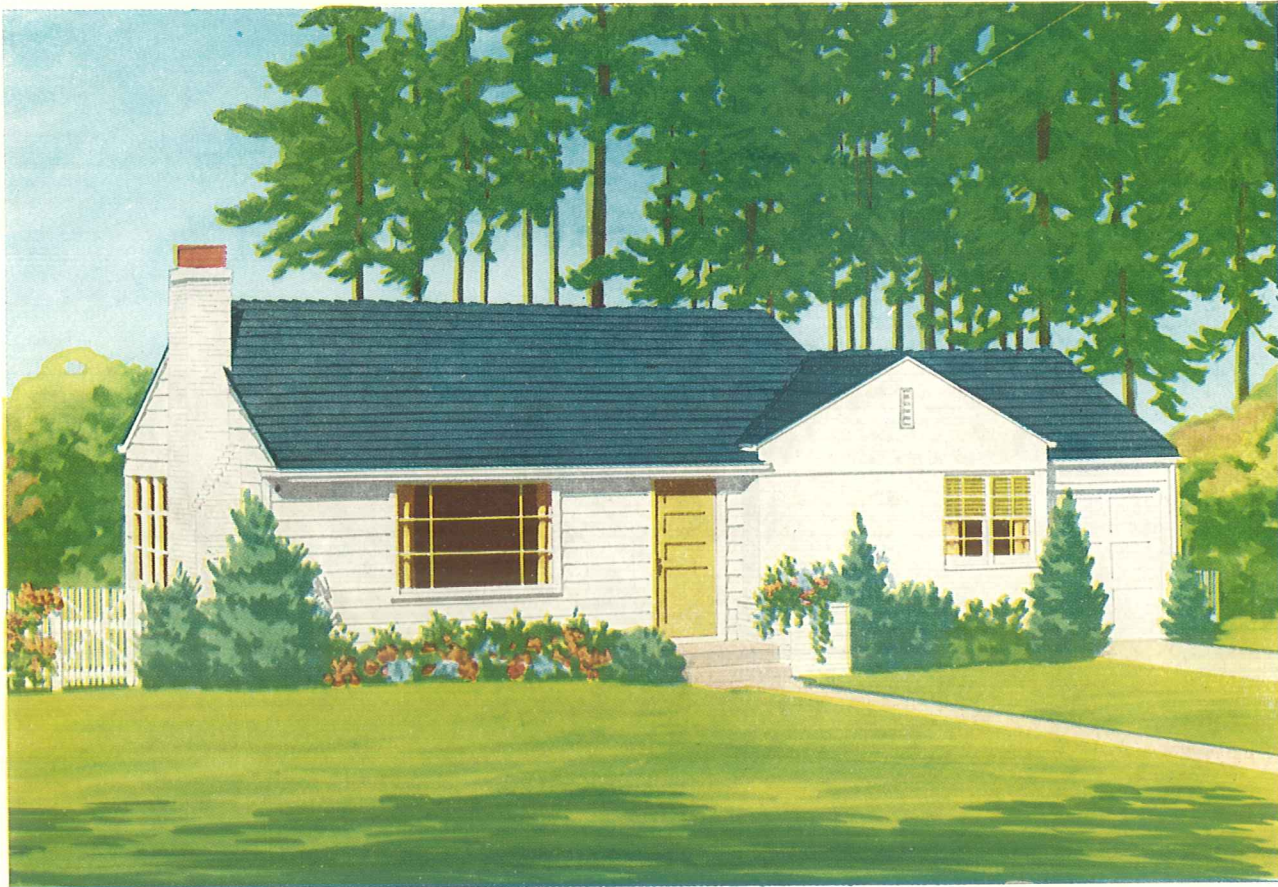
The living room, dining area and kitchen extend across the entire front of this Western type home. This affords the utmost in spaciousness and convenience, and the many windows provide an unusual amount of light and ventilation. Plan 2, with basement, also has a dining space in the kitchen. The exterior construction is of contrasting vertical and horizontal siding. Specify Plan 1 or Plan 2.



PLAN 1, WITHOUT BASEMENT

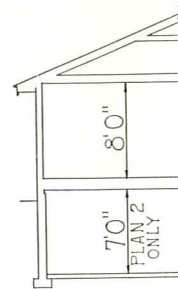


PLAN 2, WITH BASEMENT

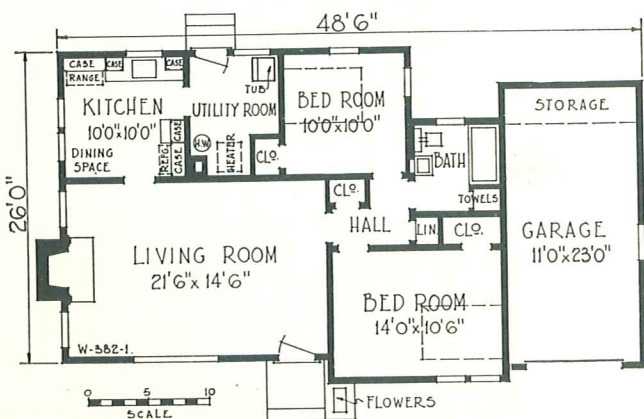


w-382

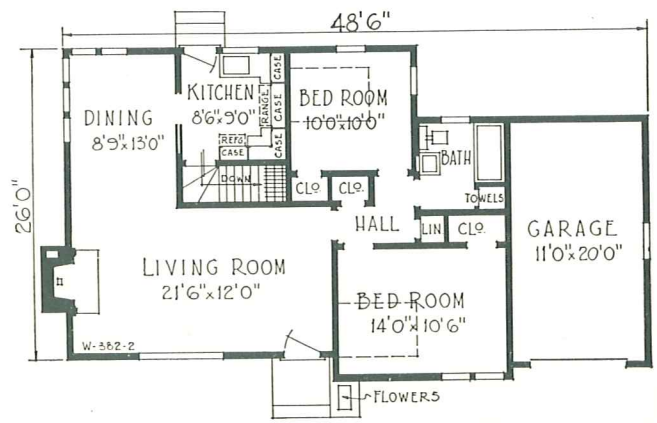
Horizontal frame siding, brick, and shiplap all contribute to the interesting appearance of this one-story Western type home. The blue roof and yellow entrance door very effectively set off the ever-popular white exterior. The picture window and the two side windows in the large living room provide plenty of sunlight and ventilation. In Plan 1, without basement, the garage is somewhat longer than in Plan 2, allowing additional storage space without increasing overall dimensions. When ordering, please specify Plan 1 or 2.



CUBAGE	
Plan 1	17,130 Cu. Ft.
Plan 2	21,490 Cu. Ft.
SQUARE FEET	
Living Area,	
Plan 1 and 2	945
Garage Area, Plan 1	276
Garage Area, Plan 2	241



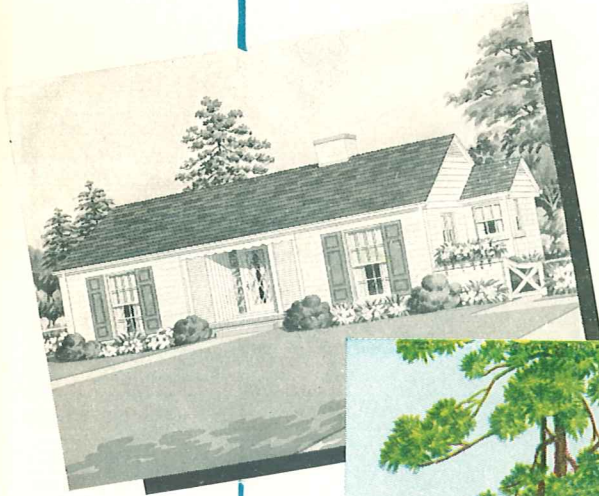
PLAN 1, WITHOUT BASEMENT



PLAN 2, WITH BASEMENT

w-336

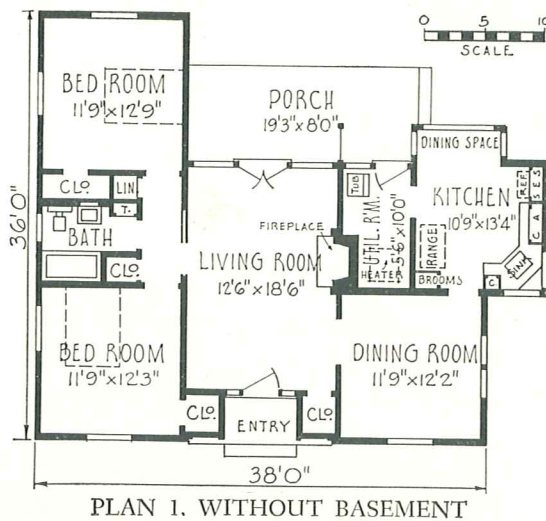
For those who desire a compact and fully equipped home, this design should suit all their needs. A selection of four different plan combinations is offered, two for frame and two for concrete block wall construction.



ALTERNATE
DESIGN B
IN
CONCRETE
BLOCK
CONSTRUCTION



DESIGN A
FRAME CONSTRUCTION

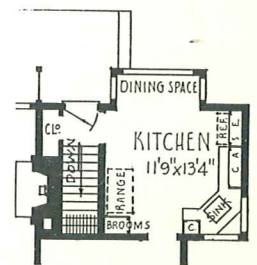


CUBAGE

Plan 1...14,500 Cu. Ft.
Plan 2...18,450 Cu. Ft.

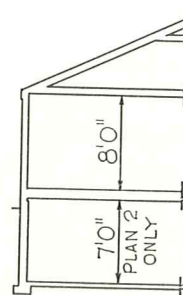
SQUARE FEET

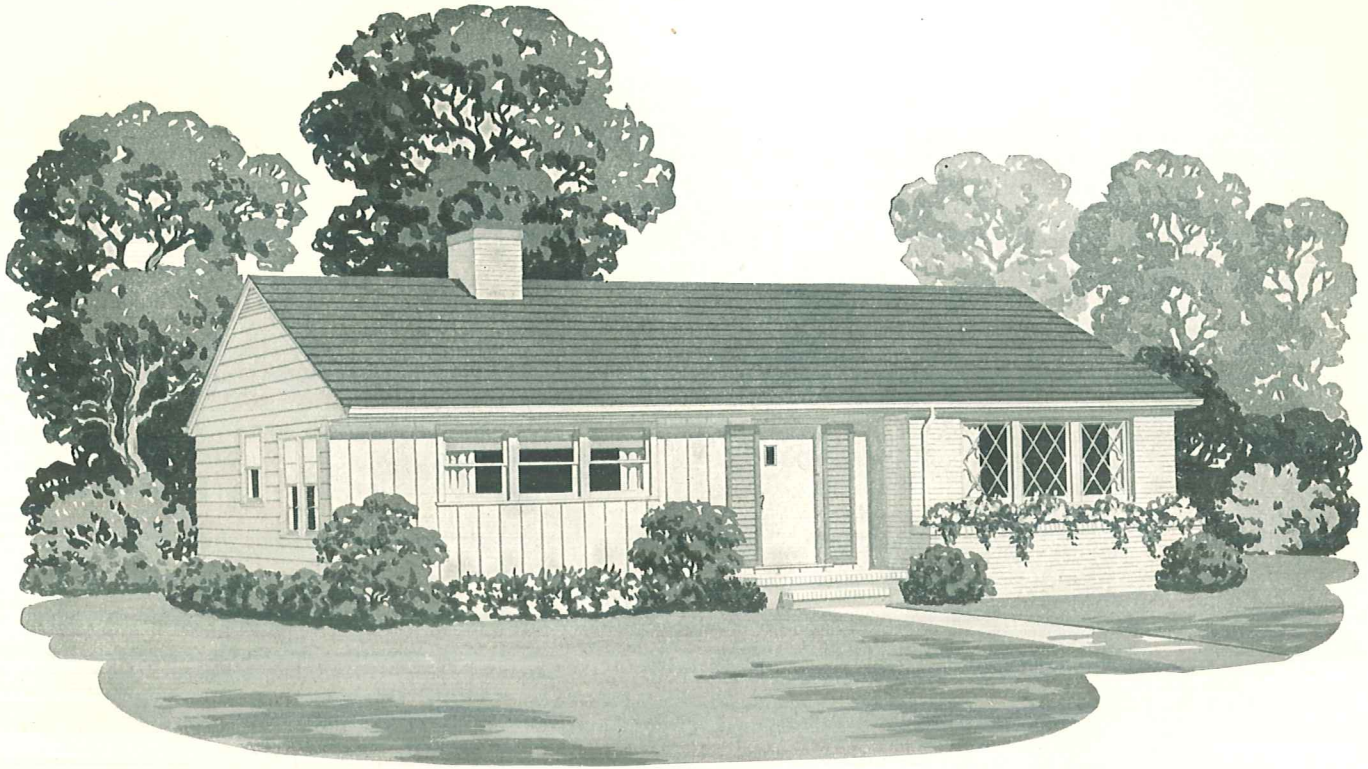
Living Area,
Design A1122
Living Area,
Design B1128
Covered Porch Area 79



PLAN 2,
WITH BASEMENT

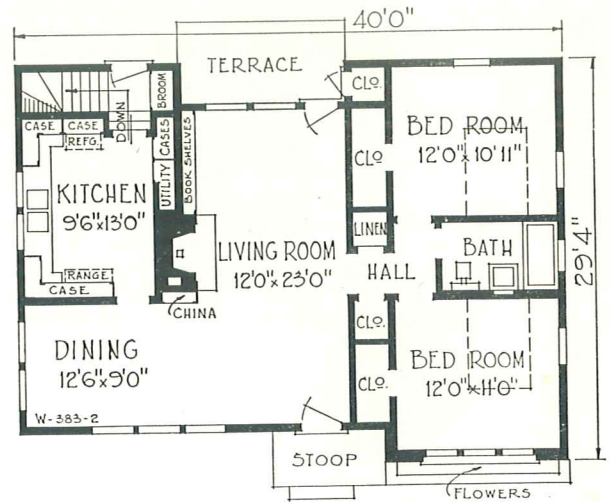
Note that basement stair has been substituted for utility room.



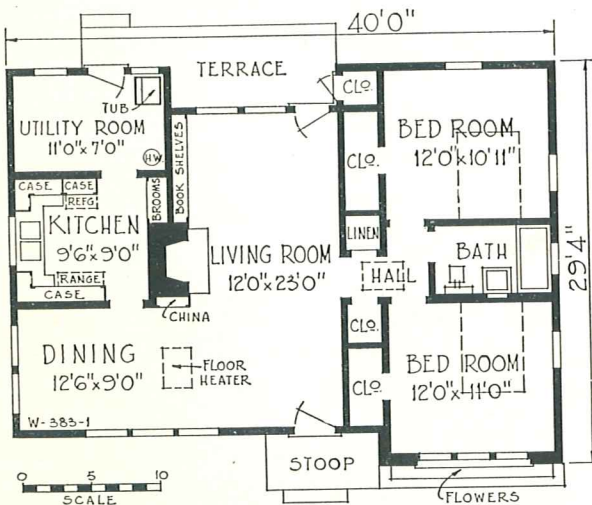


w-383

This ranch type home has a distinctive appearance that will make it outstanding in any neighborhood. Horizontal siding is used at the sides and under the eaves, and vertical siding is employed for contrast at the left side of the exterior. The right side of the front exterior, starting with the flower box at the bottom, is entirely of brick. The brick stoop and shutters set off the solid panel door. The living room and dining area is the typical spacious Western type, with a terrace at the rear.



PLAN 2, WITH BASEMENT



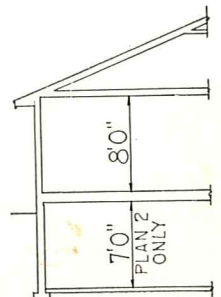
PLAN 1, WITHOUT BASEMENT

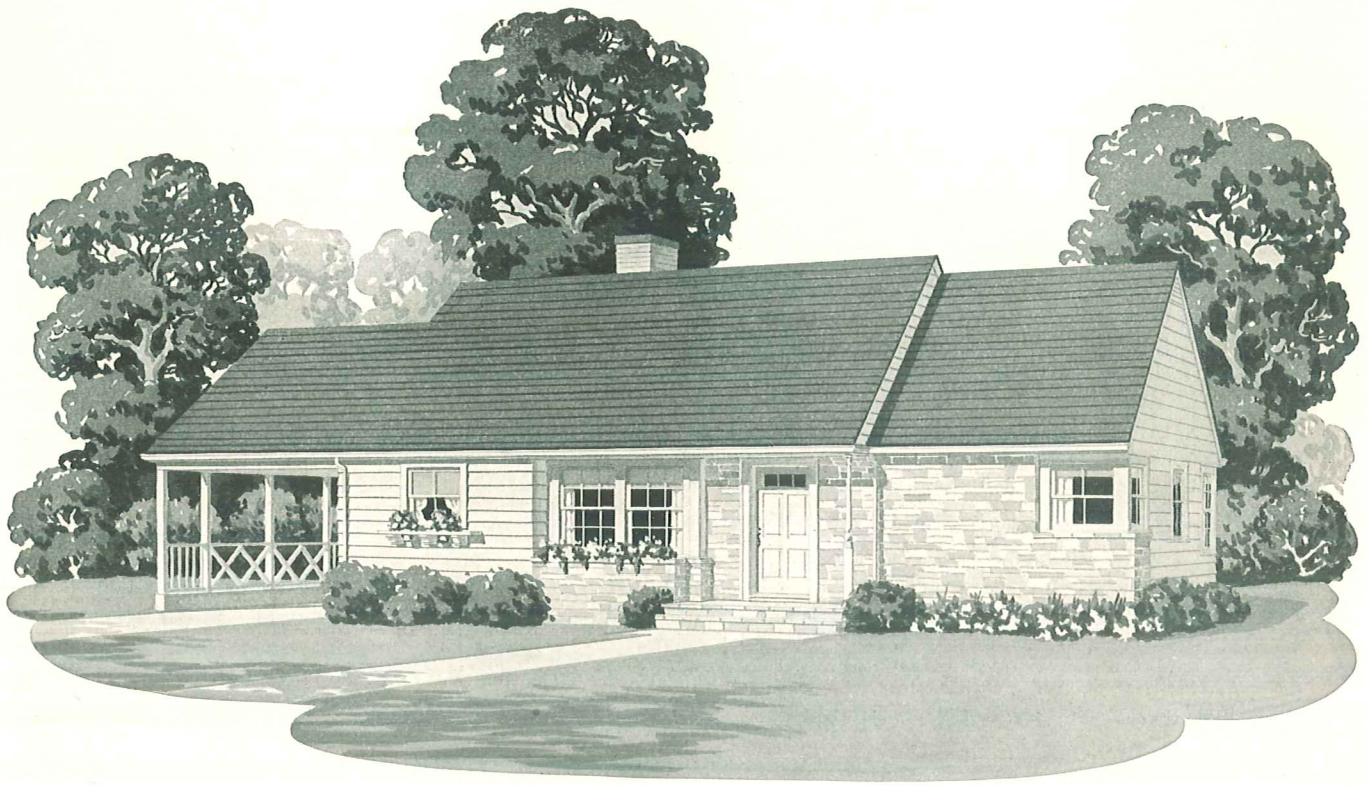
CUBAGE

Plan 1.....15,050 Cu. Ft.
Plan 2.....20,695 Cu. Ft.

SQUARE FEET

Living Area,
Plan 1 & 2.....1075





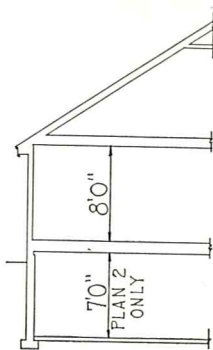
w-384

CUBAGE

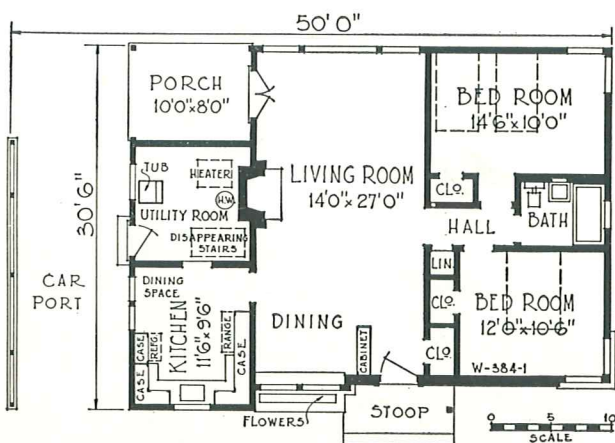
Plan 1.....18,075 Cu. Ft.
 Plan 2.....24,100 Cu. Ft.

SQUARE FEET

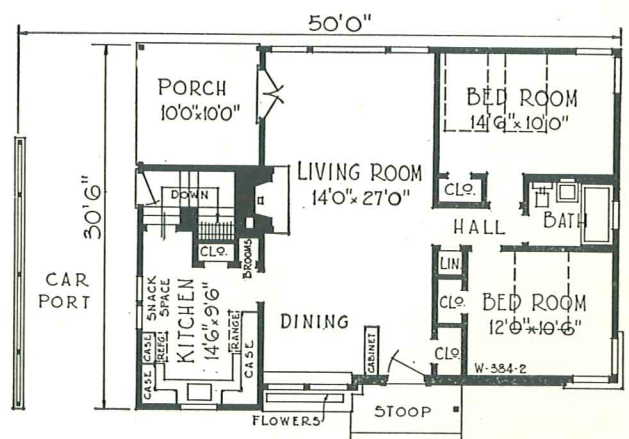
Living Area, Plan 1.....1071
 Living Area, Plan 2.....1051
 Covered Porch Area,
 Plan 1..... 98
 Plan 2.....118
 Car Port Area.....225



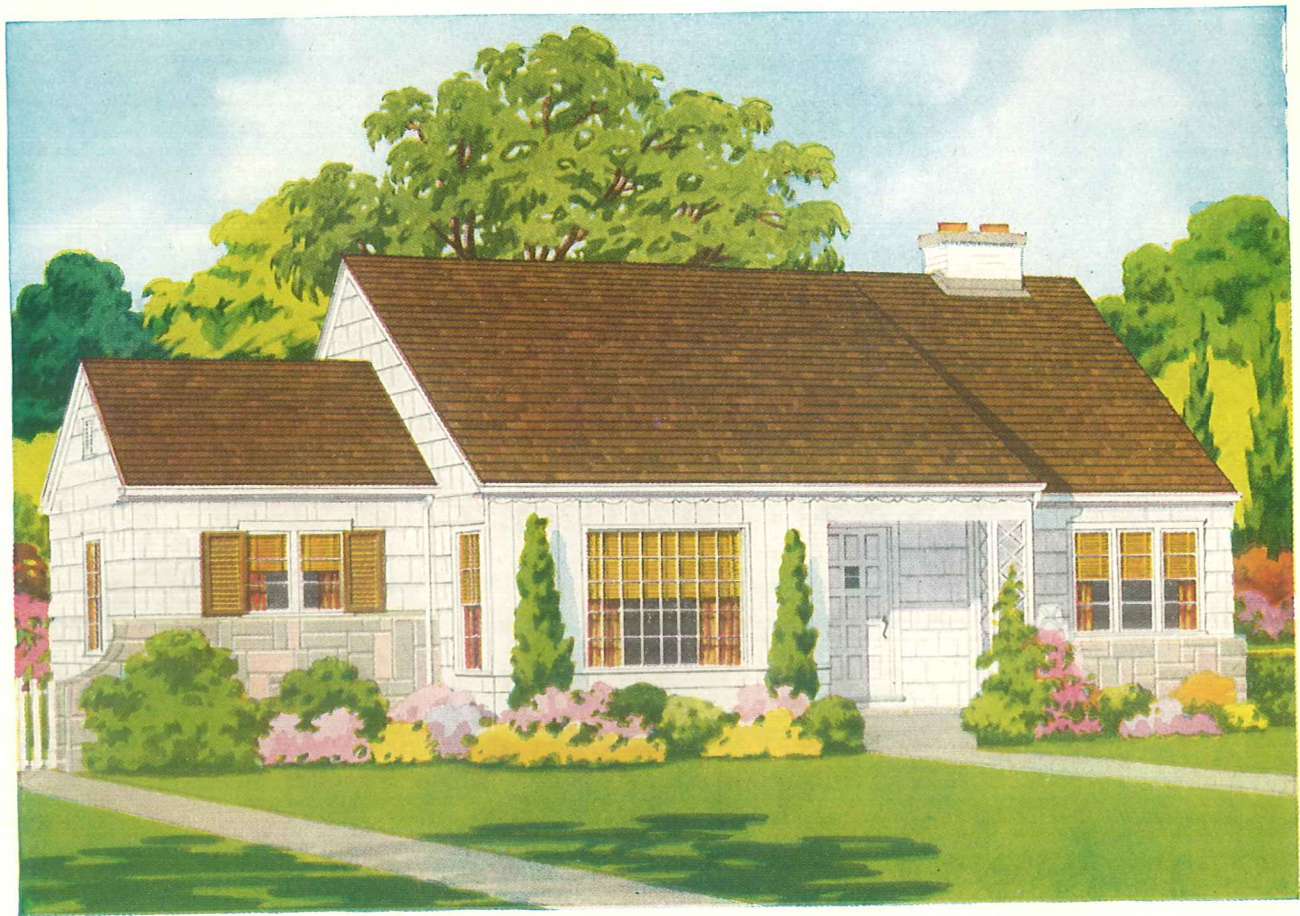
Here the combination of stone and siding is unusually colorful and attractive. Note the stone flower box. The decorative car port at the left adds considerably to the rambling ranch type effect, and it may also be used as a sheltered out-door dining or recreation area. Combining the dining area with the living room permits the use of a living area which runs the entire depth of the house. Specify Plan 1 or Plan 2.



PLAN 1, WITHOUT BASEMENT



PLAN 2, WITH BASEMENT

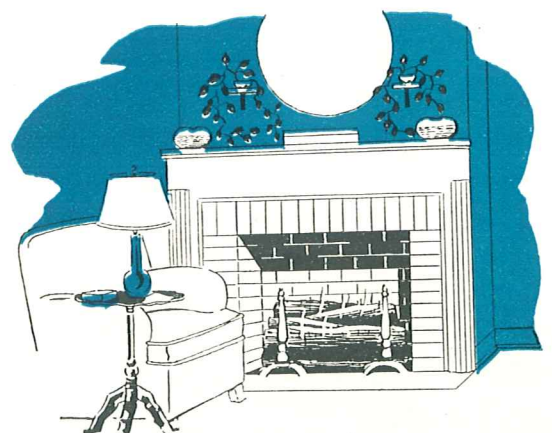
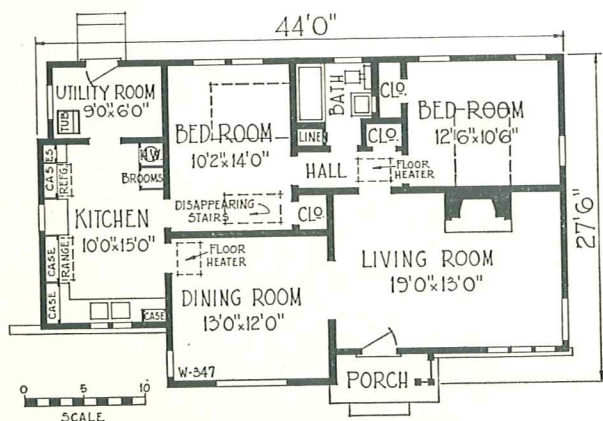
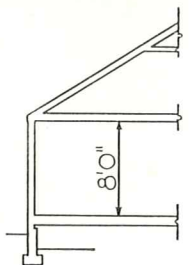


A complete five room home featuring all large rooms, a full dining room and a living room with natural fireplace. The ample kitchen is designed for efficiency and contains an abundance of cabinet facilities. While the exterior as shown is colorful, many other color schemes may be easily adapted.

w-347

CUBIC FEET
14,550

SQUARE FEET
Living Area1018
Covered Porch Area... 21

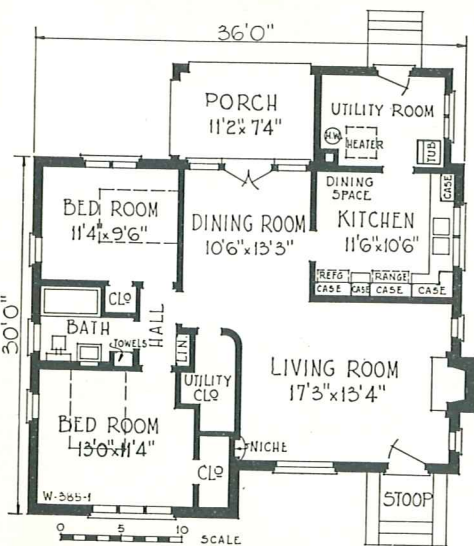
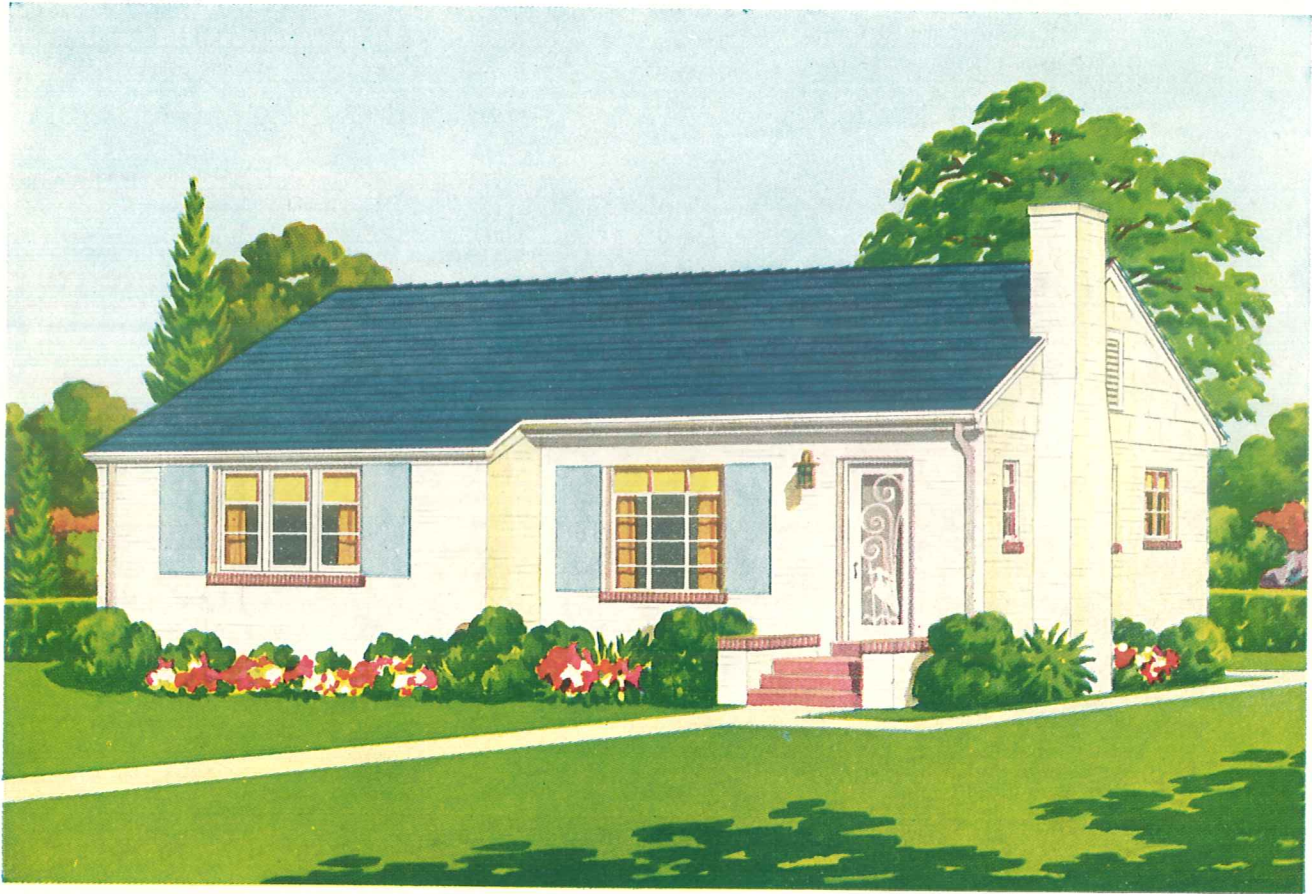


A Modern Fireplace

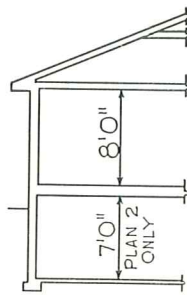
w-385

A trim small home designed with colorful roof, white painted brick walls and shingled gable. The interior provides five large well equipped rooms including the modern kitchen. The garden porch at rear is desirable. Concrete block walls could be used in place of brick.

Featuring a Towel Cabinet



PLAN 1, WITHOUT BASEMENT

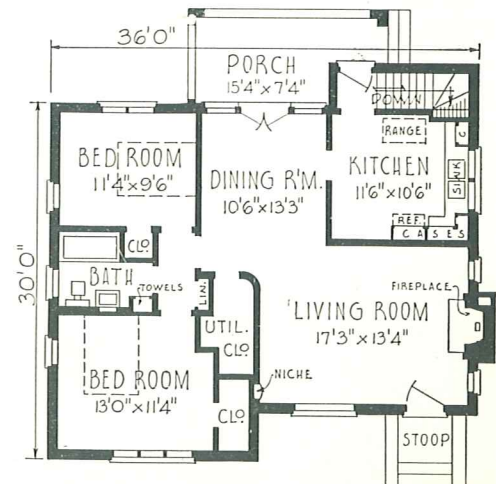


CUBAGE

Plan 1 15,112 Cu. Ft.
Plan 2 20,560 Cu. Ft.

SQUARE FEET

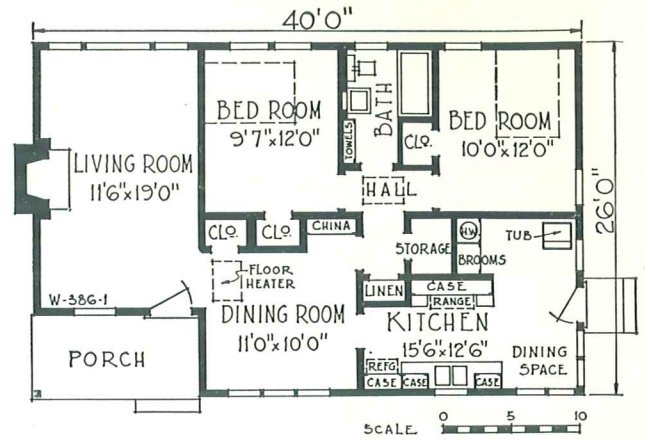
Living Area, Plan 1 1099
Covered Porch Area,
Plan 1 94
Living Area, Plan 2 1051
Covered Porch Area,
Plan 2 105



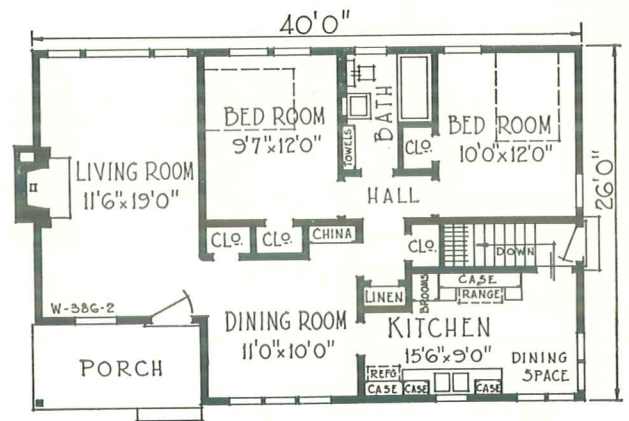
PLAN 2, WITH BASEMENT

w-386

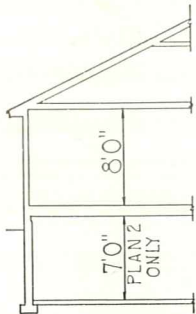
Colonial architecture and Western one-floor-plan rambling spaciousness combine to bring you this charming home design. Available with or without basement, both floor plans provide a dining space in the kitchen as well as a full dining room. Horizontal siding is used throughout in exterior wall construction.



PLAN 1, WITHOUT BASEMENT

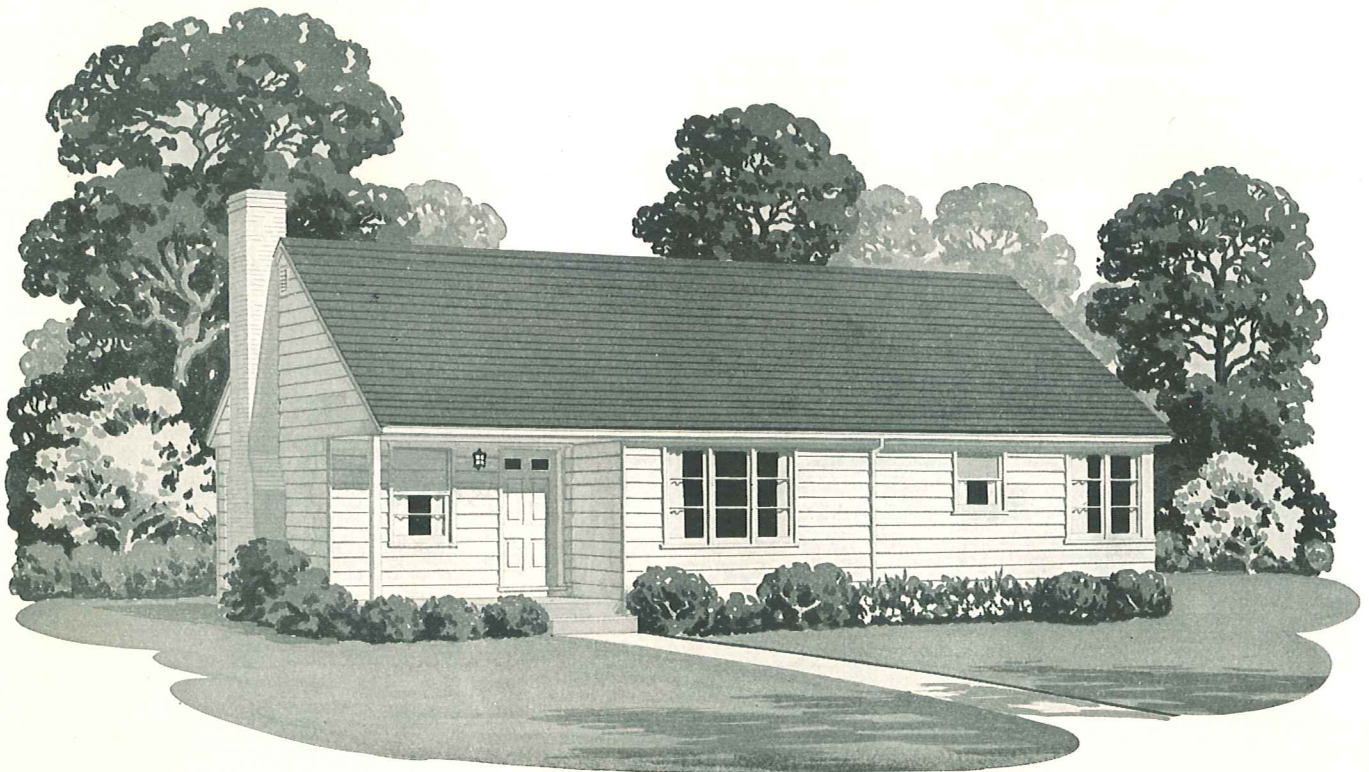


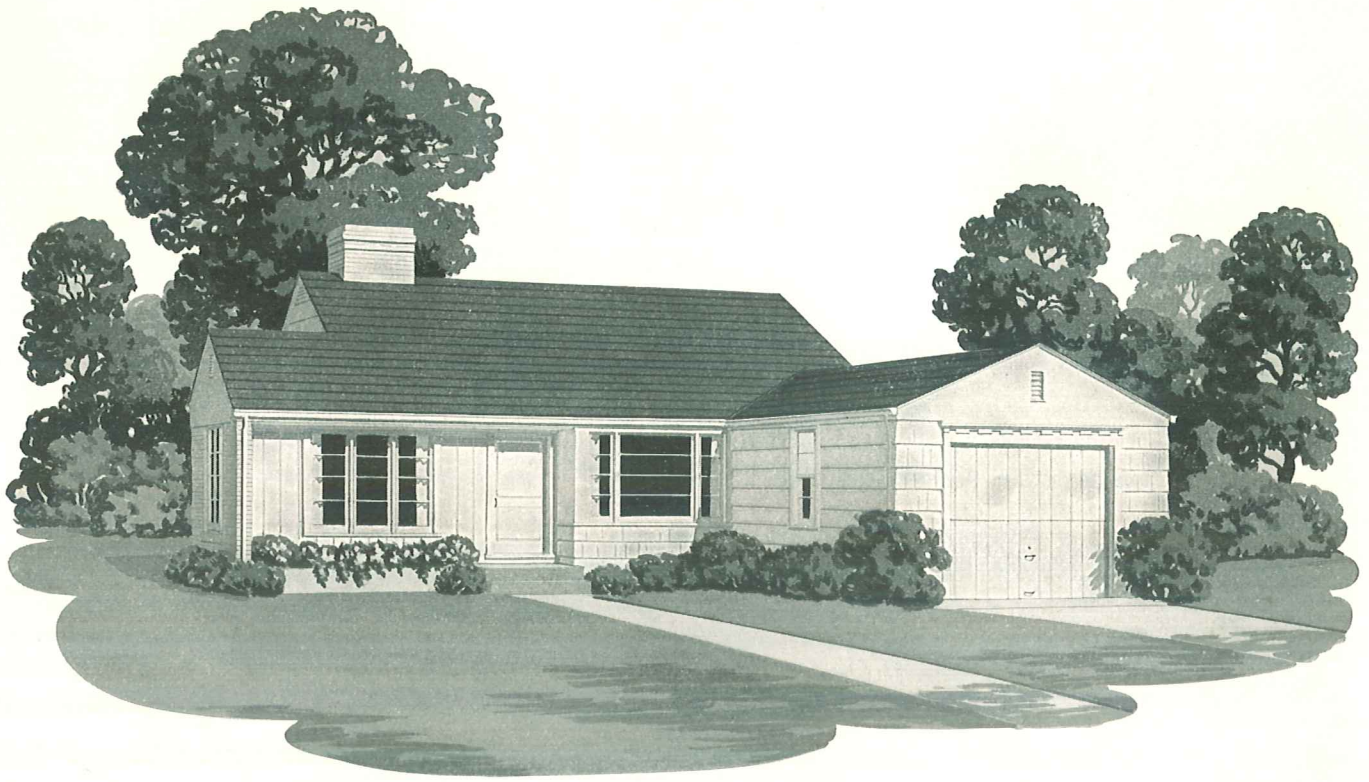
PLAN 2, WITH BASEMENT



CUBAGE	
Plan 1.....	14,915 Cu. Ft.
Plan 2.....	19,755 Cu. Ft.

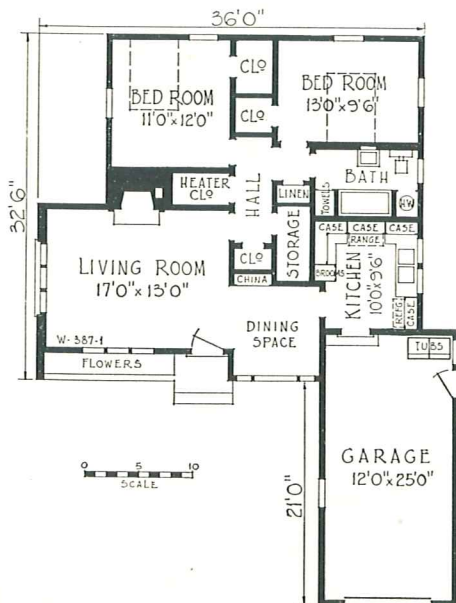
SQUARE FEET	
Living Area,	
Plan 1 & 2.....	968
Covered Porch Area,	
Plan 1 & 2.....	72



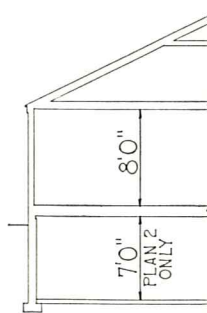


w-387

The generous and judicious use of glass, as evidenced by the two large picture windows, complete this home design. The home itself is built upon the economical rectangular principle, yet the attached garage gives the complete unit a pleasing "L" shaped ranch-type appearance. Specify plan 1 or plan 2.



PLAN 1, WITHOUT BASEMENT

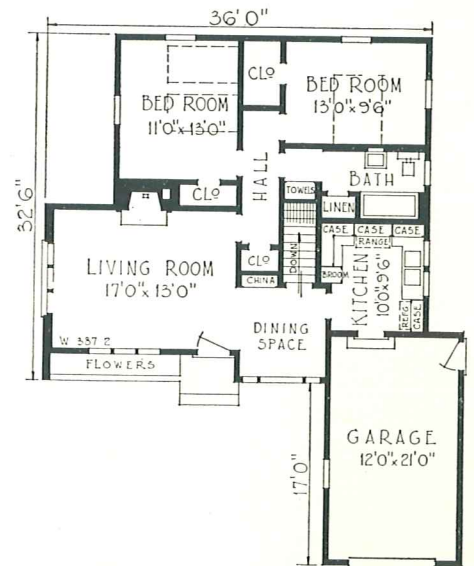


CUBAGE

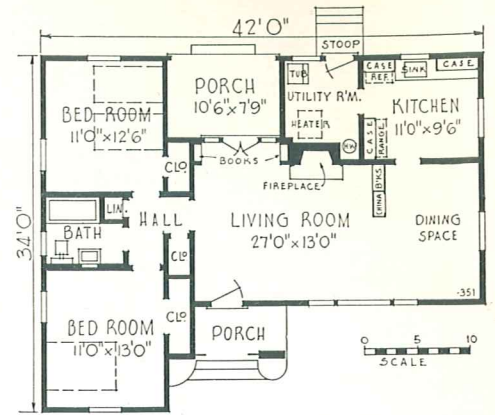
Plan 1 17,750 Cu. Ft.
 Plan 2 22,035 Cu. Ft.

SQUARE FEET

Living Area,
 Plan 1 & 2 981
 Garage Area,
 Plan 1 332
 Plan 2 280



PLAN 2, WITH BASEMENT

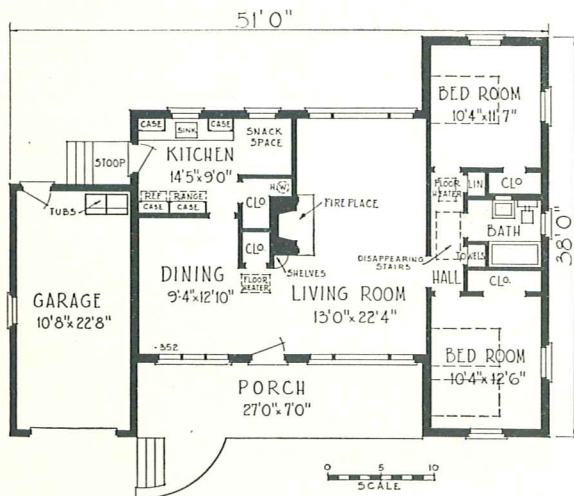


↙ **w-351** ↗
 Cubage 16,011 Cu. Ft.
 Living Area 1,059 Sq. Ft.
 Porch Area 125 Sq. Ft.



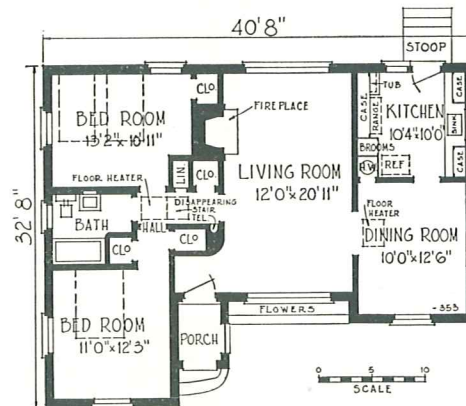
w-352 ↕

Cubage 16,425 Cu. Ft.
 Living Area 1,120 Sq. Ft.
 Porch Area 189 Sq. Ft.
 Garage Area 272 Sq. Ft.



w-353 ↗

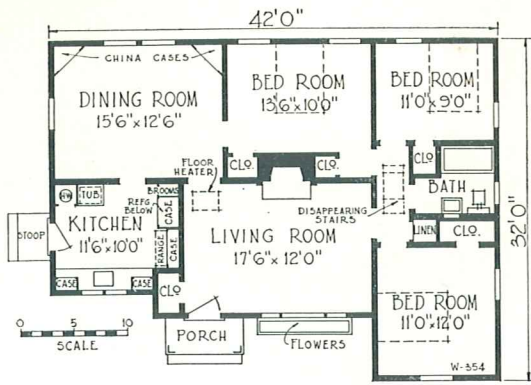
Cubage 14,860 Cu. Ft.
 Living Area 1,071 Sq. Ft.
 Porch Area 29 Sq. Ft.



Designs W-352 and W-353 have exterior walls of solid brick. However, concrete block wall construction could be substituted for brick if desired.

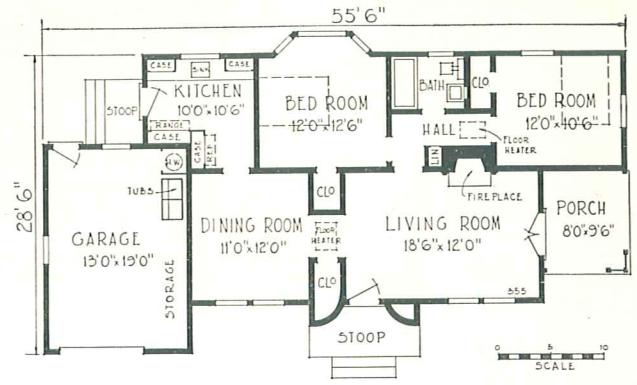
Complete blue-print plans are available for all homes illustrated in this book.

6 attractive Homes for Modern Living



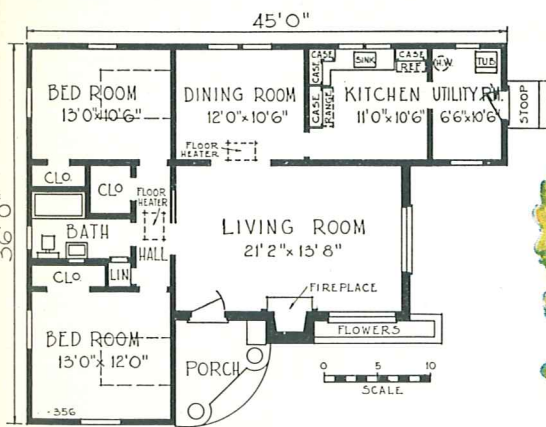
w-354

Cubage 16,190 Cu. Ft.
 Living Area 1,145 Sq. Ft.
 Porch Area 21 Sq. Ft.



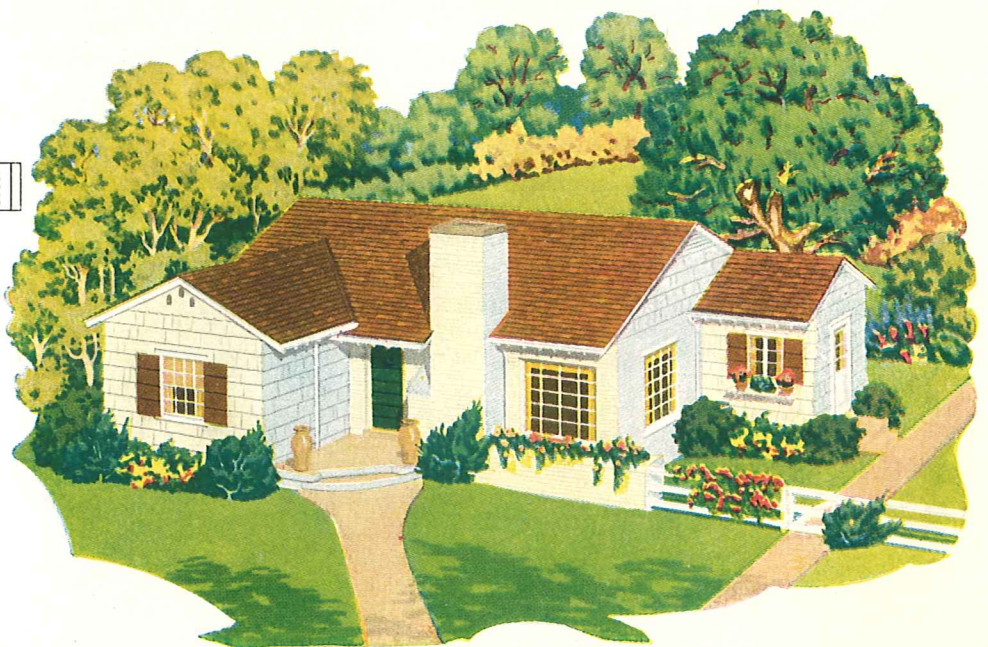
w-355

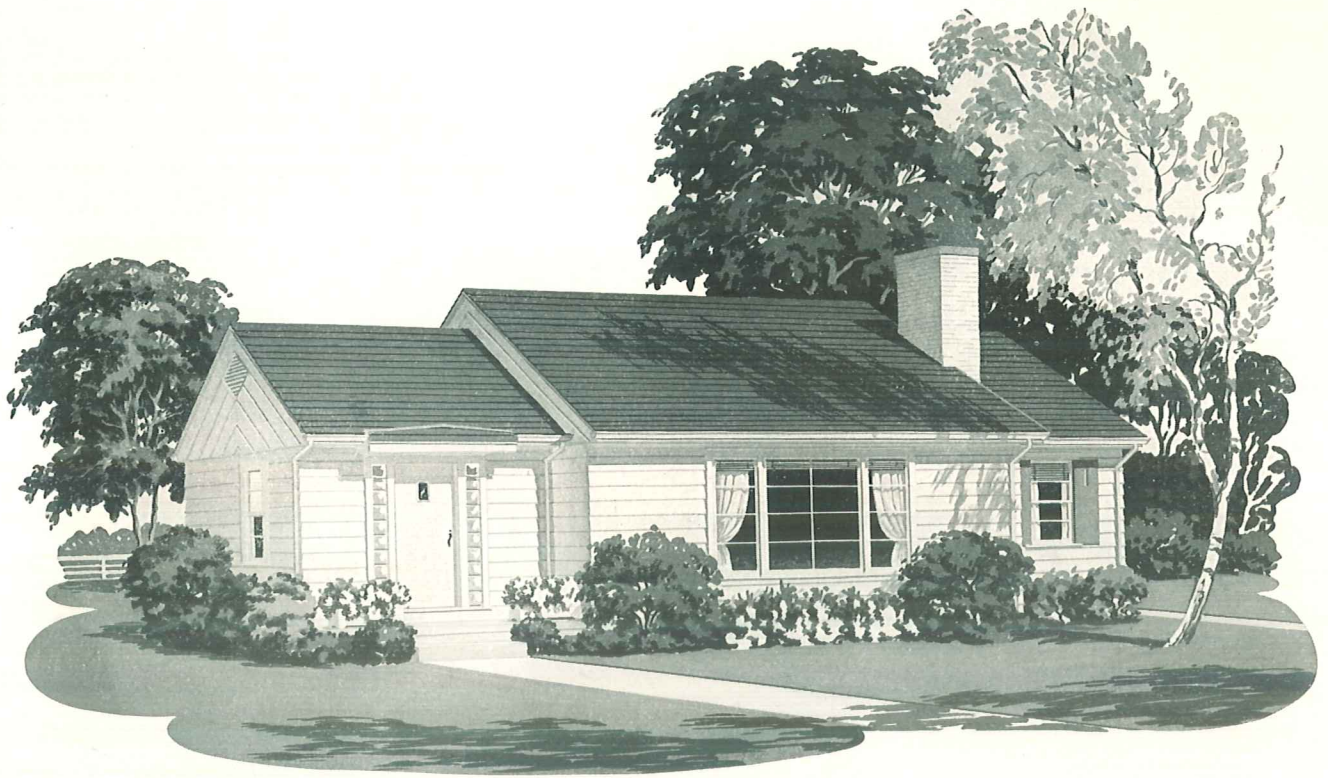
Cubage 17,000 Cu. Ft.
 Living Area 962 Sq. Ft.
 Porch Area 76 Sq. Ft.
 Garage Area 270 Sq. Ft.



w-356

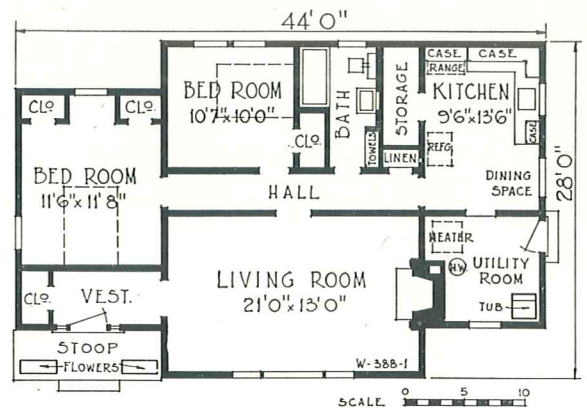
Cubage 15,380 Cu. Ft.
 Living Area 1,183 Sq. Ft.



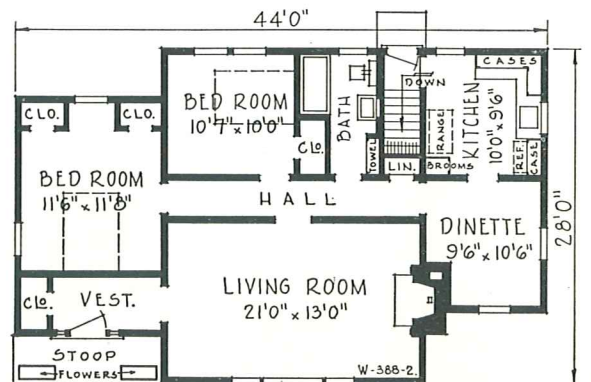


w-388

Convenience and utility are the keynotes of this home design. Every inch of space is utilized to the fullest advantage to produce an effect of spaciousness. The large picture window and the use of glass blocks at each side of the entrance add especial interest to the front exterior. Available with or without basement. Be sure to specify Plan 1 or 2.



PLAN 1, WITHOUT BASEMENT



PLAN 2, WITH BASEMENT

CUBAGE

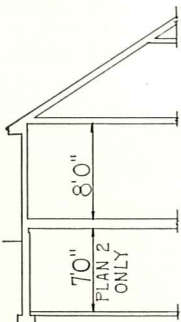
Plan 1.....15,490 Cu. Ft.
Plan 2.....20,870 Cu. Ft.

SQUARE FEET

Living Area, Plan 1.....1096
Living Area, Plan 2.....1076



The kitchen layout shown here saves many steps and minutes. On the opposite page, three typical modern arrangements are shown.

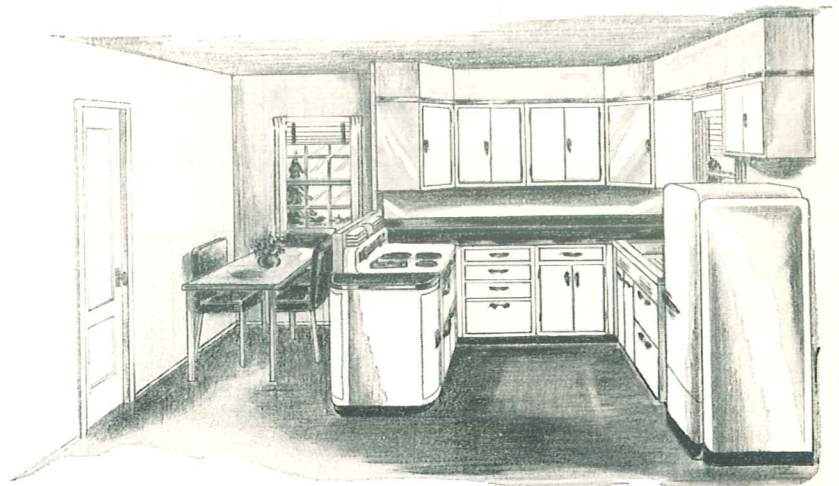


Your Kitchen . . .

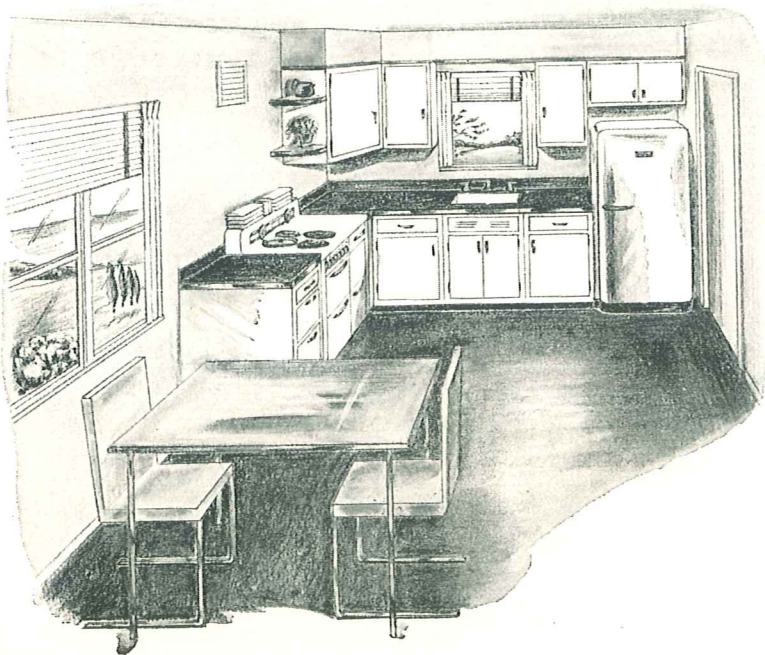


This is an L-SHAPED KITCHEN. The three main work centers are conveniently arranged along two walls, with the refrigerator nearest the entry door.

The U-SHAPED KITCHEN is ideal for larger homes and fits in well with plans which include breakfast rooms and extra cabinet space.



When only two walls are available, this kitchen is the answer. This type of plan provides space for a table and does not require much walking or reaching.



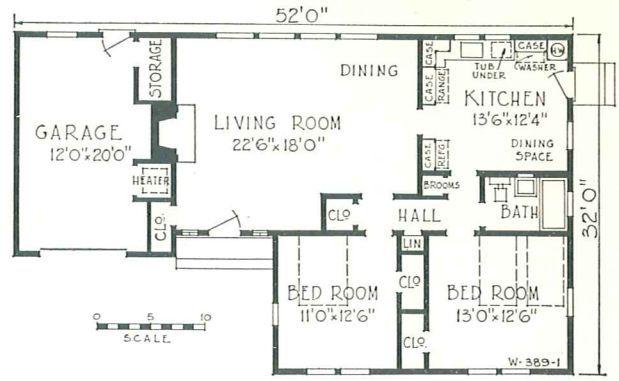
There are many ways of planning kitchen arrangements, but some major principles should be followed to save time and effort and allow greater convenience—

- (1) Include counter tops or working space beside the sink, the range, and the refrigerator.
- (2) Place the sink so that it is convenient to the range and refrigerator.
- (3) Include a food-mixing center, beside the refrigerator preferably, or beside a range.

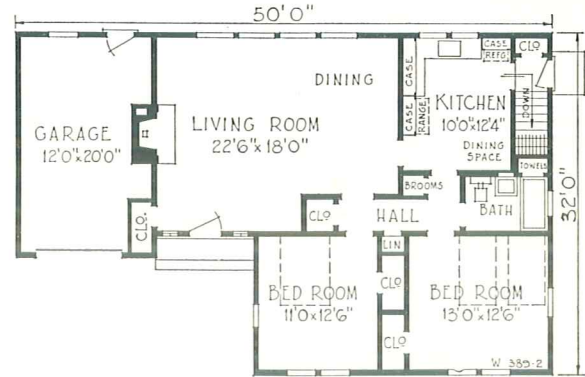
Store foods and equipment nearest the place where they are used — within arm's reach whenever possible.

w-389

The attached garage carries out the wide, rambling, typical Ranch type effect of this design. Floor Plan 1, without basement, is 2 feet wider than Plan 2, with basement. The living room and dining area are combined to furnish a spacious room, with natural fireplace. Glass blocks are very effectively used at each side of the entrance to present an inviting and attractive exterior.



PLAN 1, WITHOUT BASEMENT



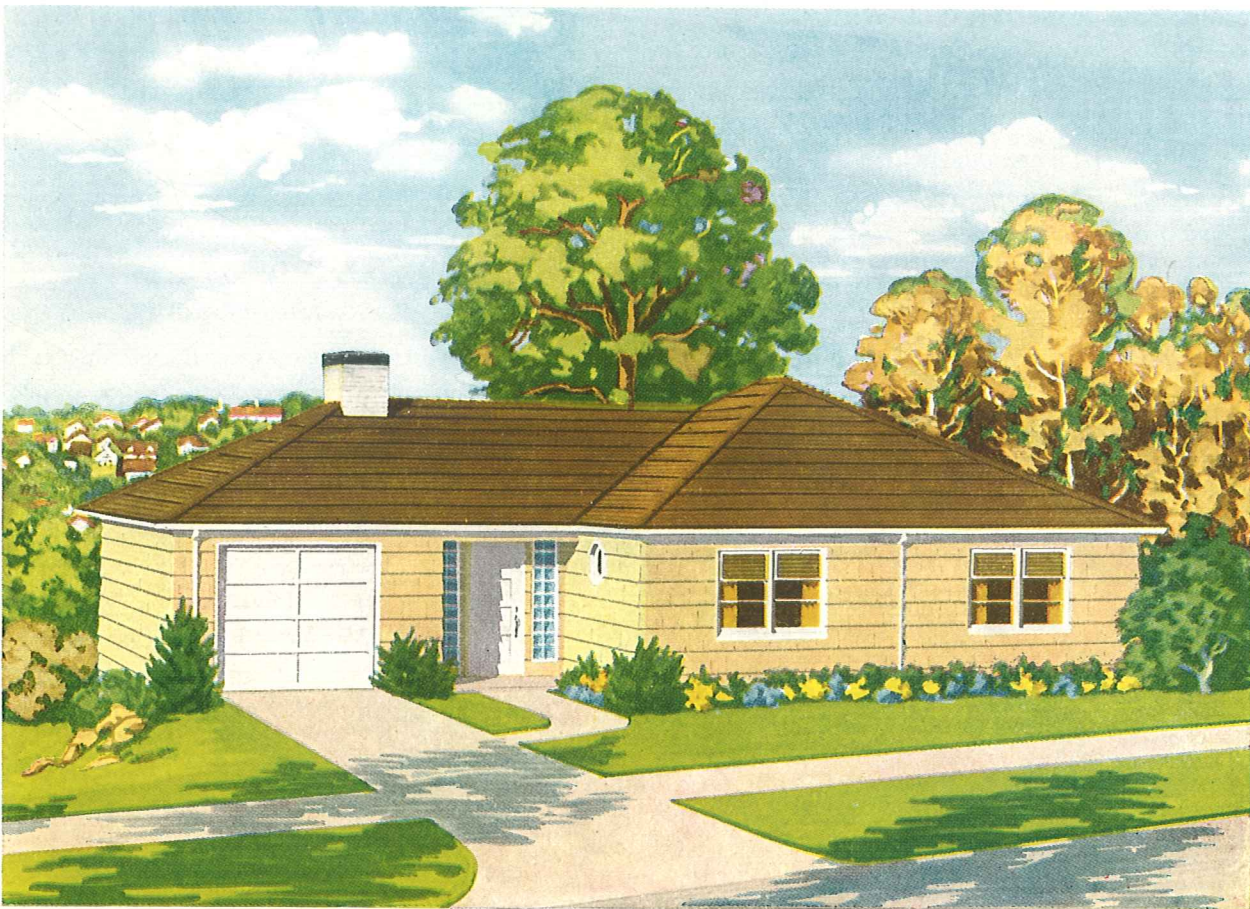
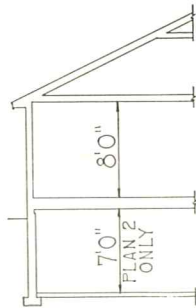
PLAN 2, WITH BASEMENT

CUBAGE

Plan 1.....	19,385 Cu. Ft.
Plan 2.....	23,680 Cu. Ft.

SQUARE FEET

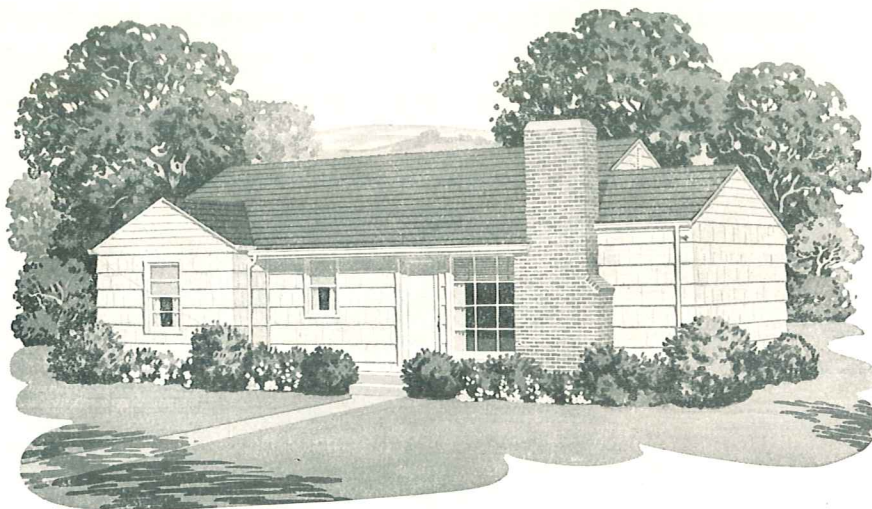
Living Area, Plan 1.....	1128
Living Area, Plan 2.....	1088
Garage Area, Plan 1.....	247
Garage Area, Plan 2.....	251





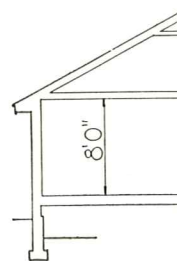
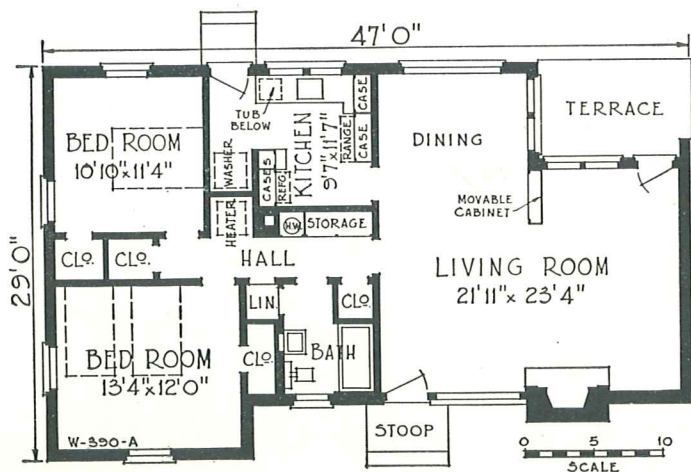
DESIGN A, BRICK CONSTRUCTION

w-390



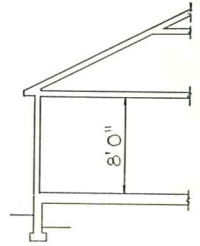
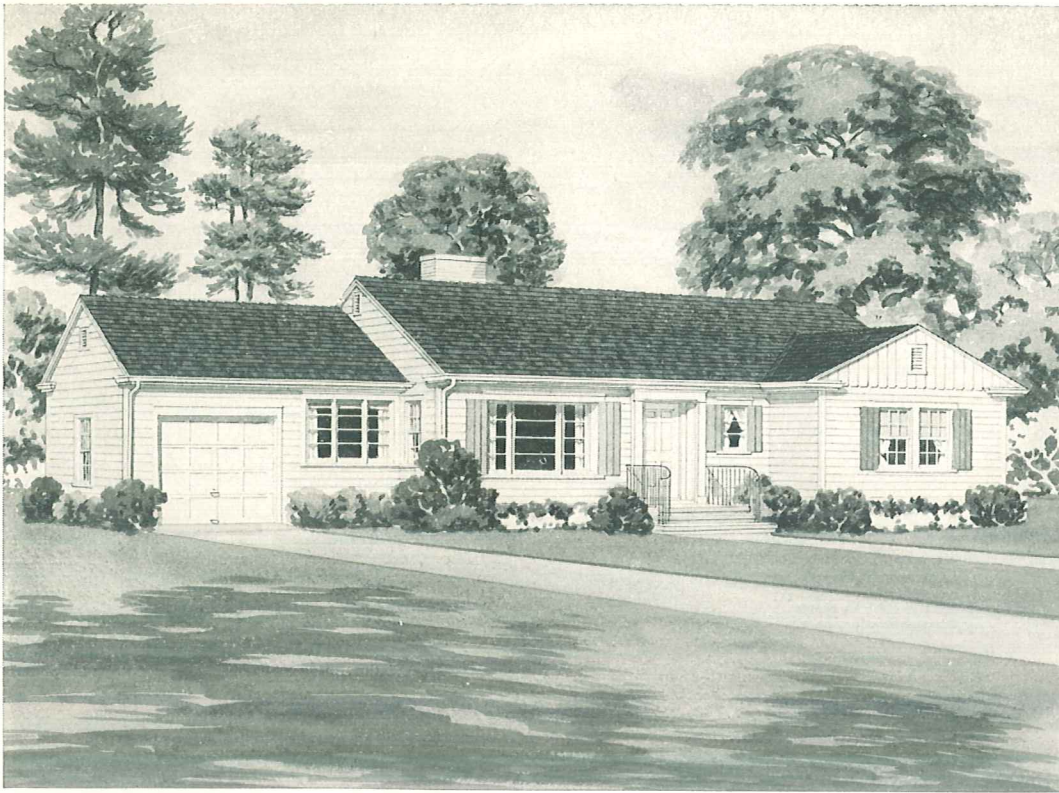
DESIGN B, FRAME CONSTRUCTION

It should be very difficult to make a decision between these two attractive homes. The floor plan is the same but the exterior effects are entirely different. Design A is of full brick construction while Design B has a wood shingle exterior. This home design incorporates the many desirable features that are typical of Western or ranch type homes, with the living and dining area occupying almost fifty per cent of the floor space. Note the natural fireplace and terrace.



★
 CUBIC FEET
 16,443
 SQUARE FEET
 Living Area 1158



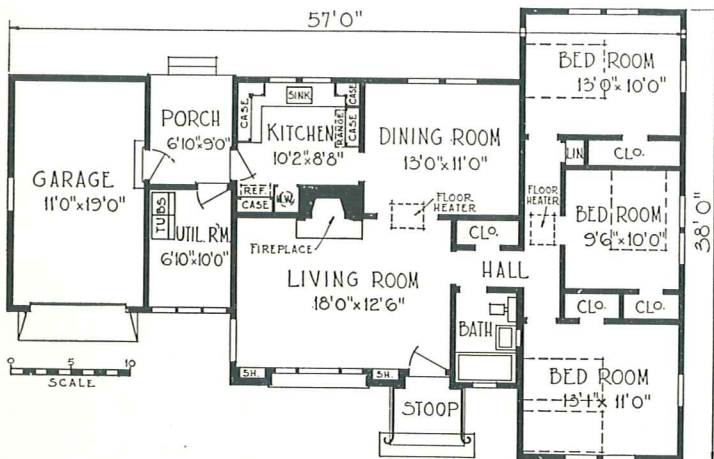


CUBAGE
19,575

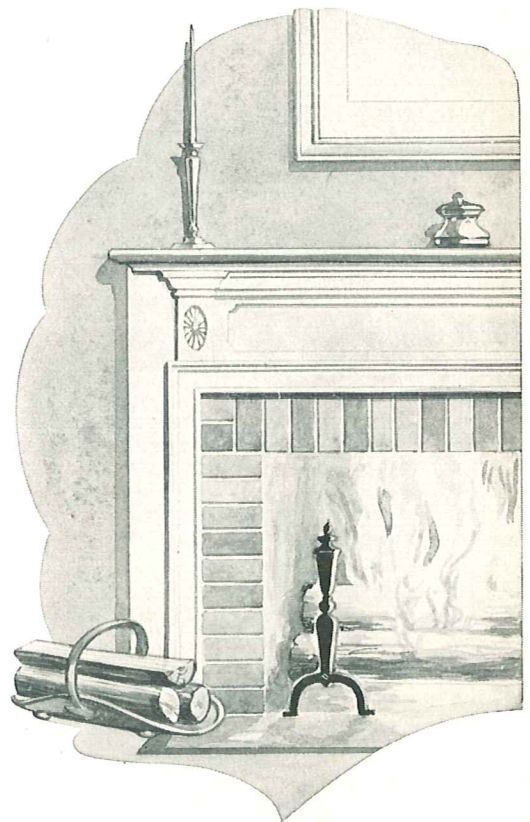
SQUARE FEET
Living Area 1160
Covered Porch Area 61
Garage & Utility
Area 315

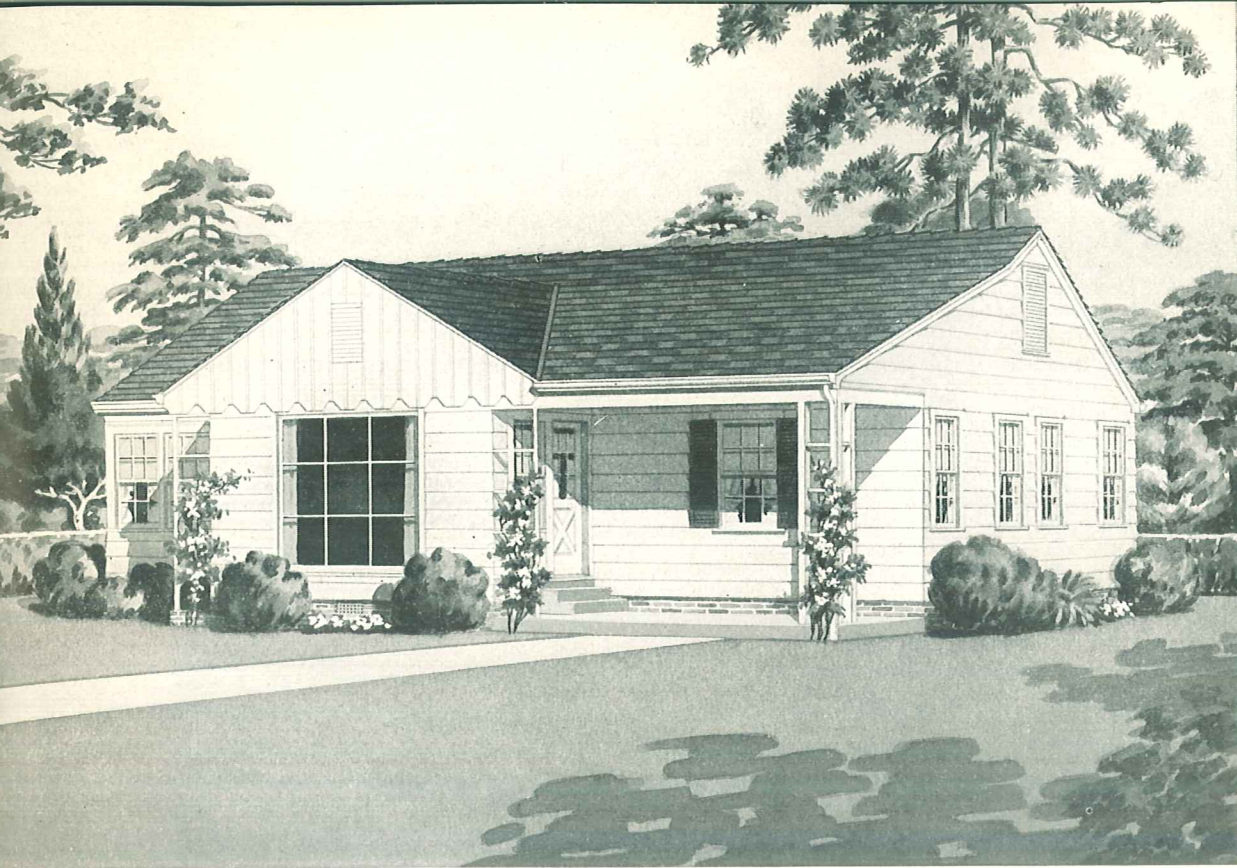
w-337

A low structure designed along conventional Colonial lines for a wide lot. The right wing contains three large bed rooms compactly grouped and with ample closet facilities included. A modern "U" type kitchen arrangement and a large dining room are provided.

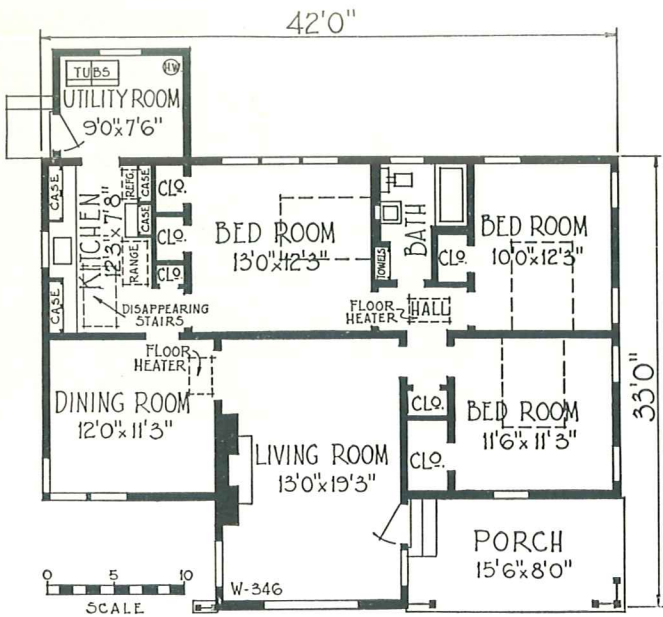


The Colonial
Fireplace

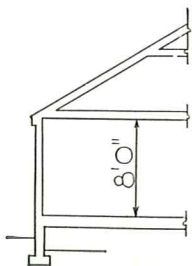




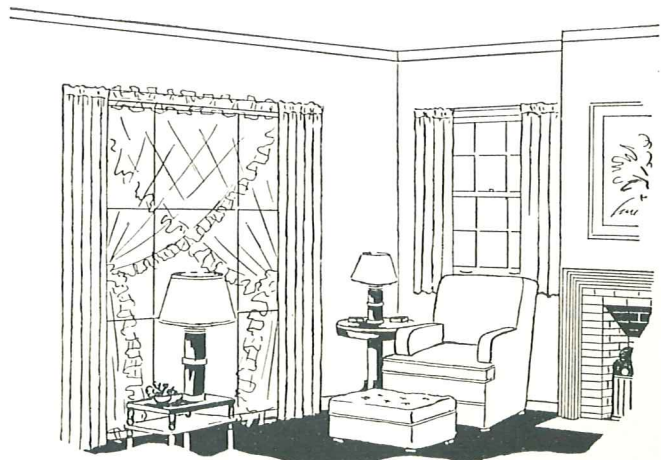
w-346



What could be more attractive and desirable than this charming six room home? Do not overlook the comfortable porch, large living room, three bed rooms and modern equipped utility kitchen. Note the large picture window.



★
 CUBIC FEET
 17,550
 SQUARE FEET
 Covered Porch
 Living Area 1242
 Area 124

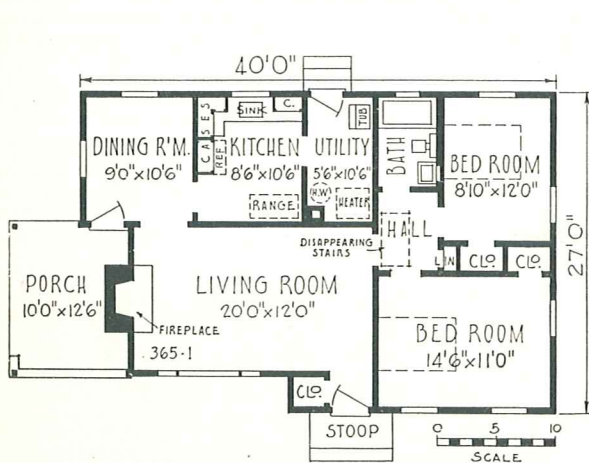
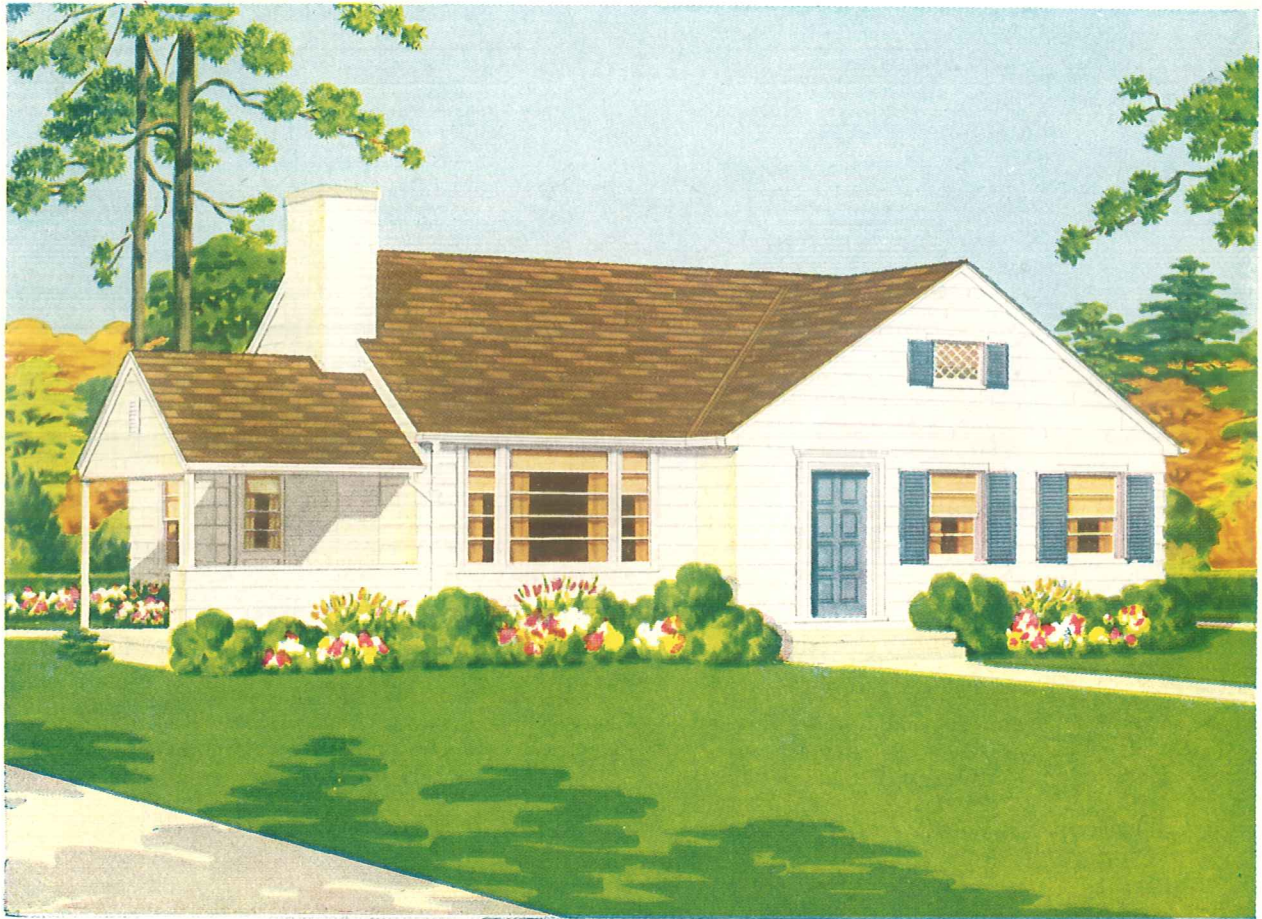


Living Room — Picture Window

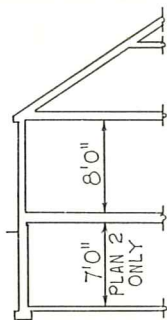


w-365

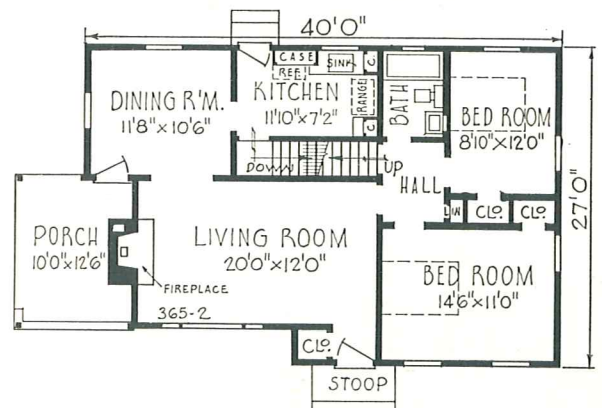
There is a lot of living comfort in this well planned small home. The exterior is unusually attractive—the interior arrangement both practical and convenient. The large view window and porch are pleasing features.



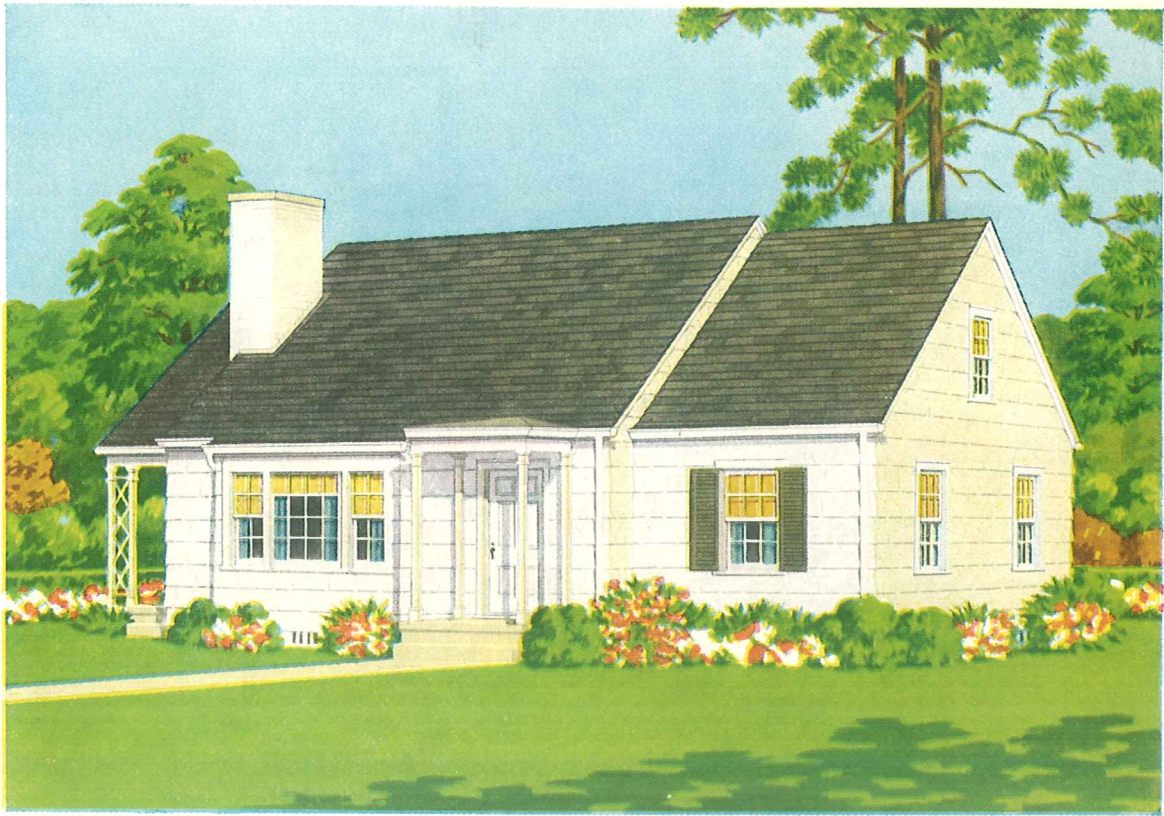
PLAN 1, WITHOUT BASEMENT
Living Area.....978 Sq. Ft.



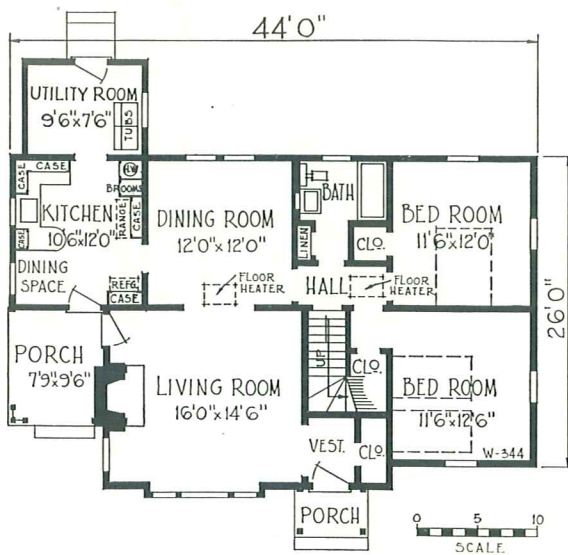
CUBAGE
Plan 1,
14,100 Cu. Ft.
Plan 2,
19,960 Cu. Ft.
Covered Porch
Area, 130 Sq. Ft.



PLAN 2, WITH BASEMENT
Living Area.....978 Sq. Ft.

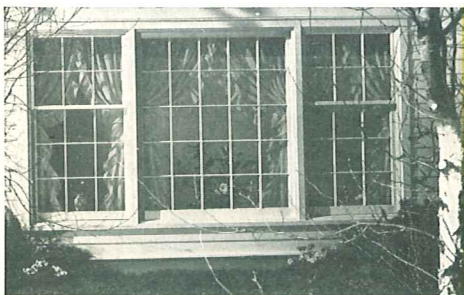
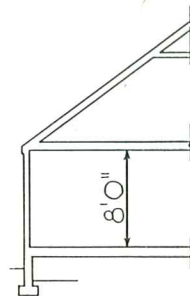


w-344



This home, designed along traditional Colonial lines, is not only modern in exterior appointment, but up-to-the-minute in its interior plan. Five large rooms, arranged conventionally, form a practical living area. A stair to attic is provided.

★
CUBIC FEET
 17,740
SQUARE FEET
 Living Area 1179
 Covered Porch Area... 78

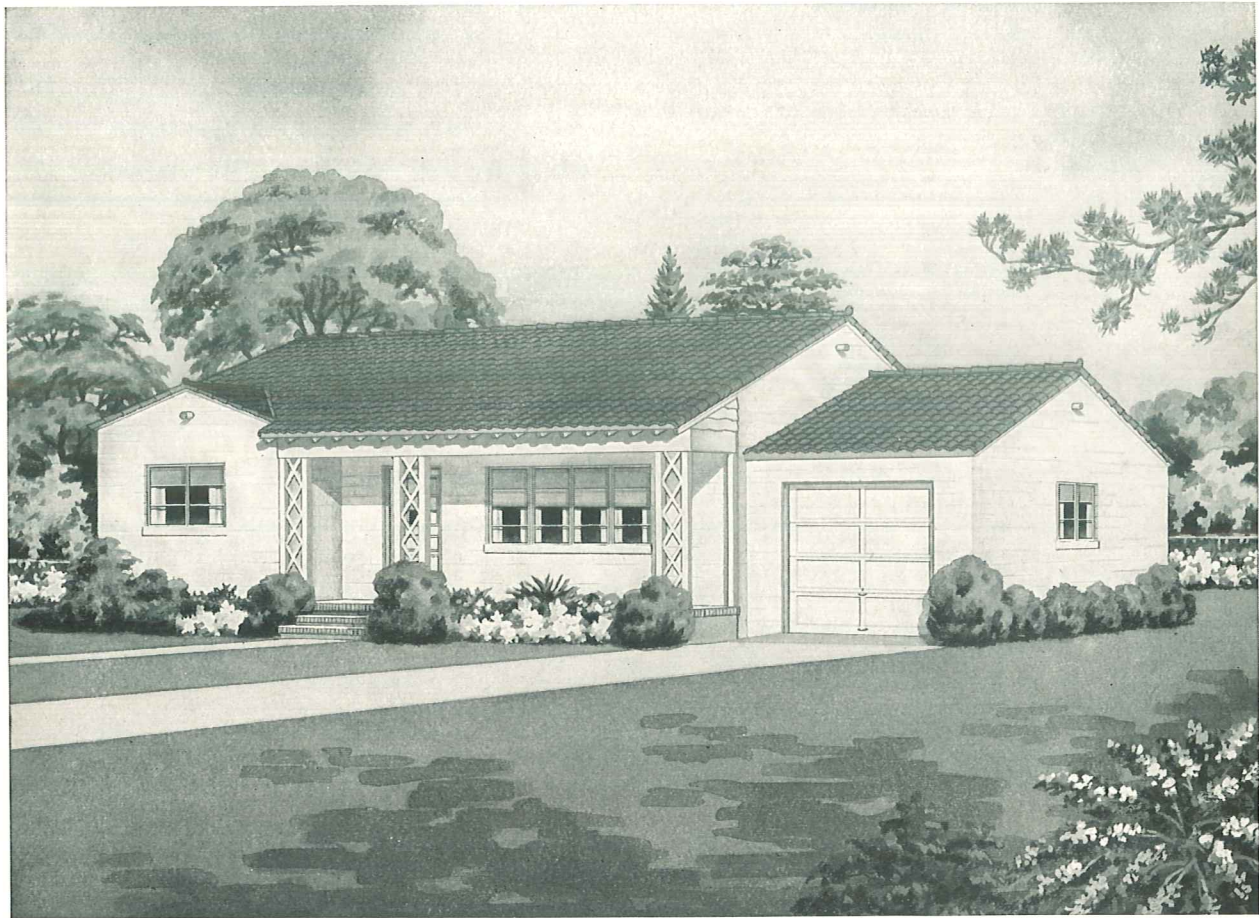
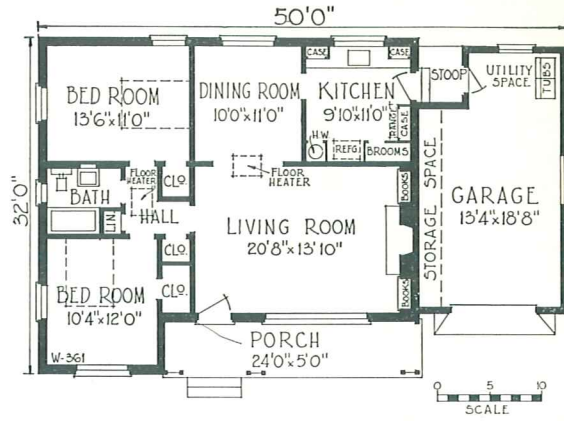


★ PICTURE WINDOWS ★

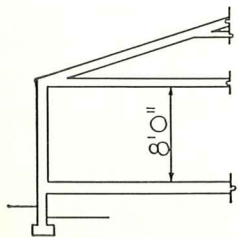
Great stress is placed on the inclusion of picture windows in modern homes. Because of their larger size, these windows let in more light and afford an unbroken picturesque, intriguing view which contributes more to the livability of a room than paintings or tapestries could ever do. Today, they are standard items and may be had at a cost within moderate reason.

w-361

This attractive, modern "Ranchy" home is out of the ordinary because it emphasizes charming individuality. Yet it is designed on simple and practical lines with well placed rooms of ample size. Featured are the large comfortable porch and the convenient attached garage. OUTSIDE WALLS ARE OF CONCRETE BLOCKS.



At right —
the Fireplace Wall.



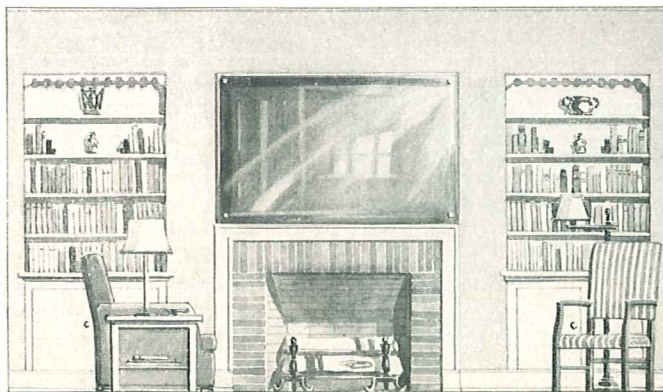
★

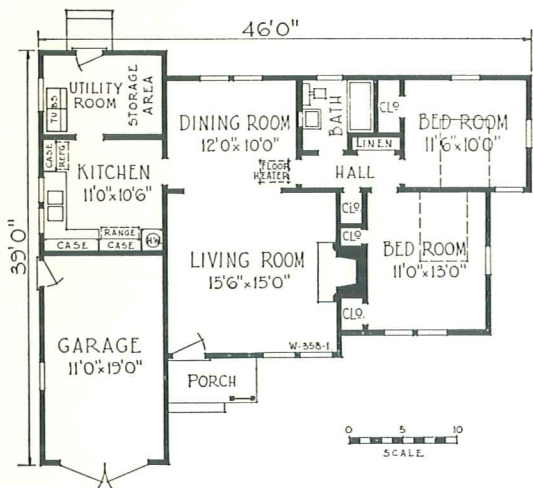
CUBIC FEET
14,475

SQUARE FEET

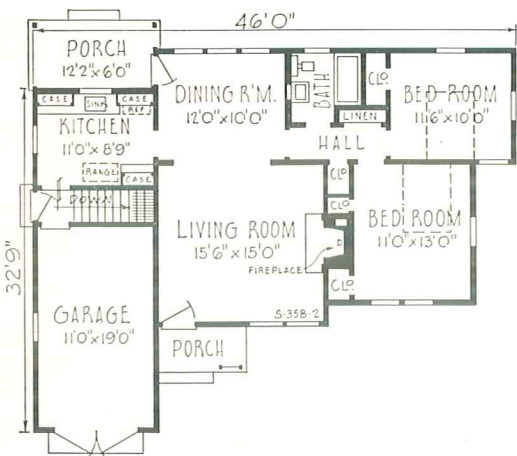
Living Area	1032
Covered Porch Area...	120
Garage Area	356

★

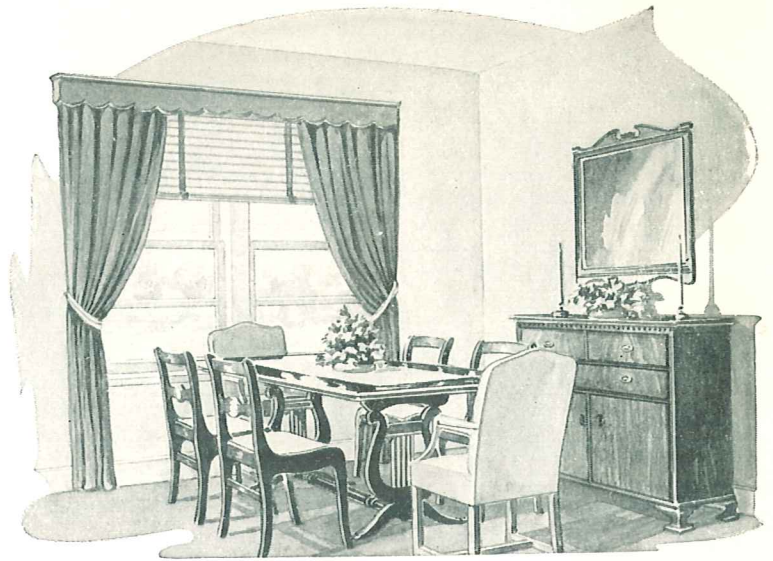




PLAN 1, WITHOUT BASEMENT



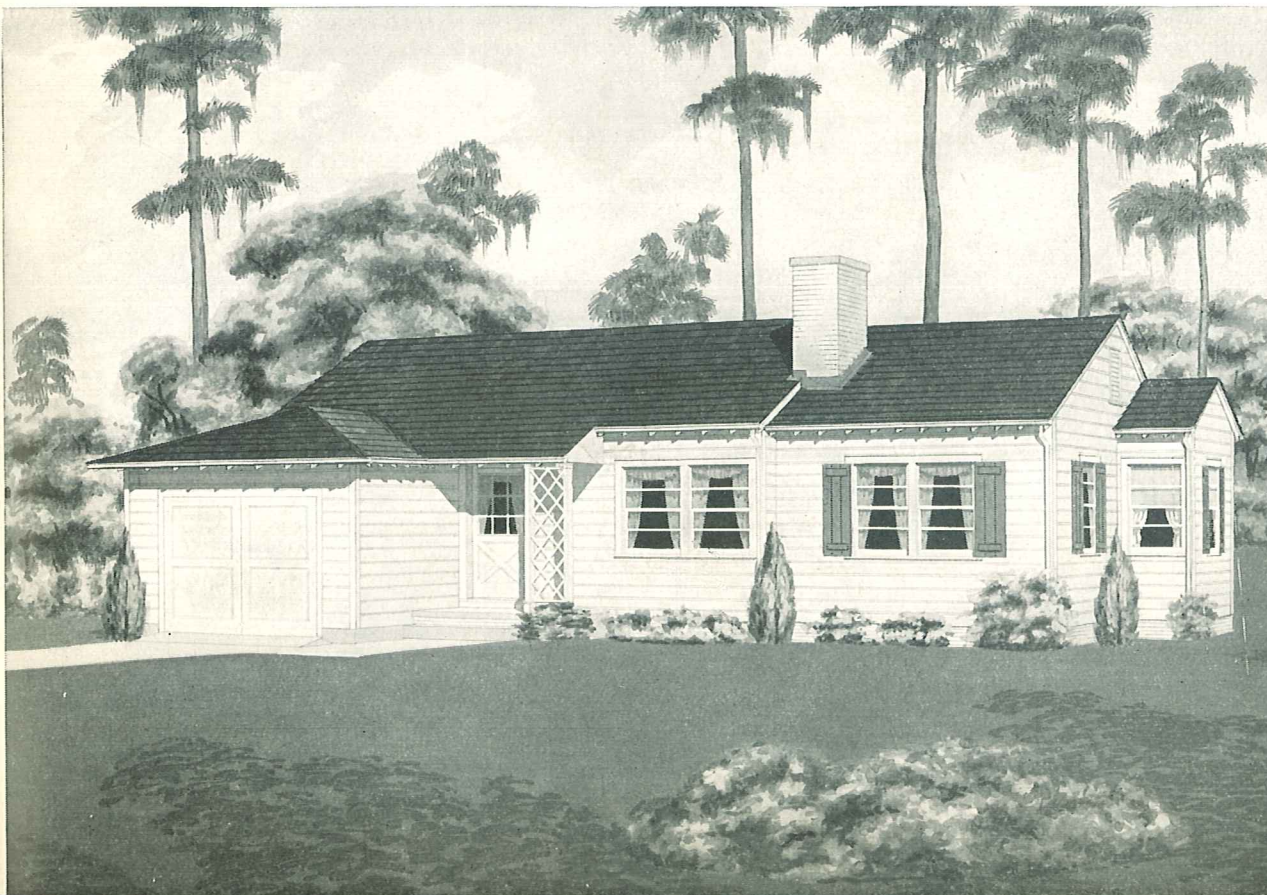
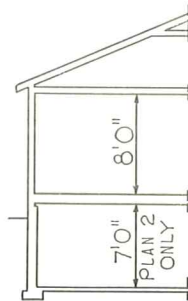
PLAN 2, WITH BASEMENT



The Dining Room

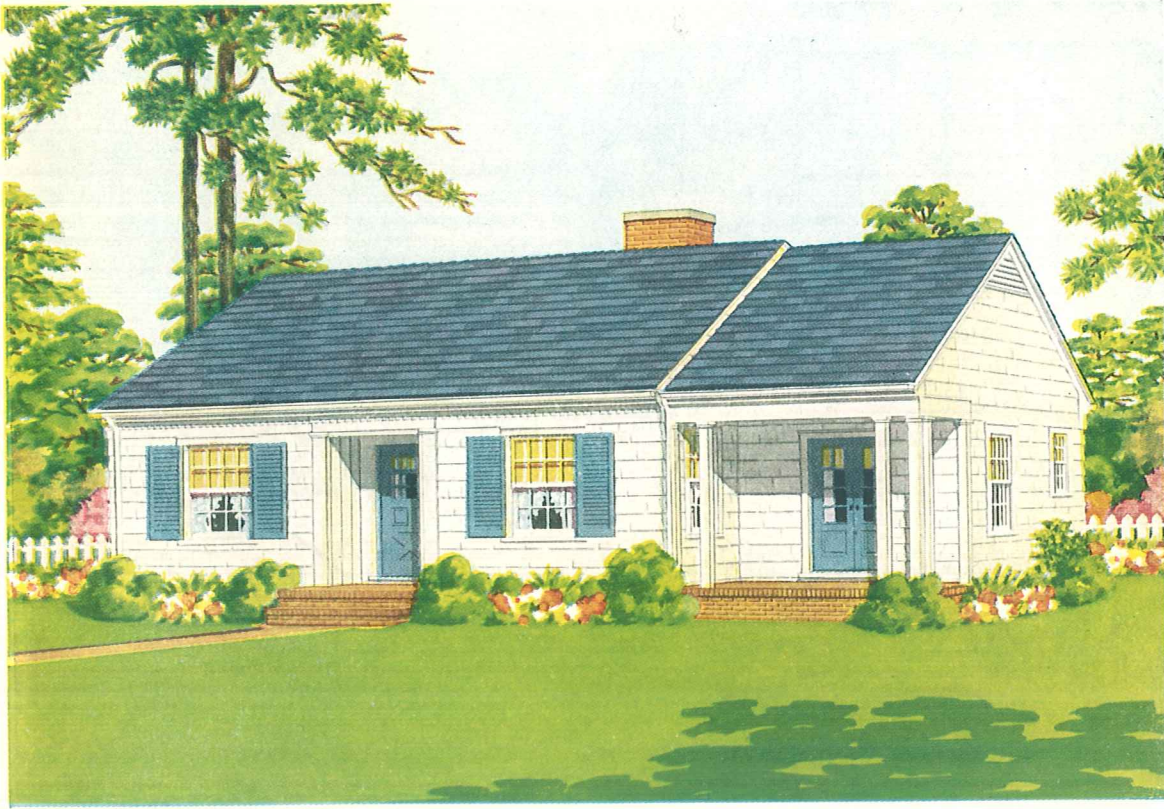
w-358

This five room home with its conveniently attached garage, has width and low lines characteristic of modern spreading ranch types of homes. Simple roof lines and practical planning make this a model home of efficiency at a minimum cost of construction.



CUBAGE
 Plan 1,
 17,360 Cu. Ft.
 Plan 2,
 21,790 Cu. Ft.

SQUARE FEET
 Living Area,
 Plan 11052
 Living Area,
 Plan 2980
 Covered Porch
 Area, Plan 1 . . 32
 Area, Plan 2 . .104
 Garage Area . . .229

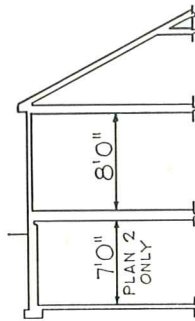


w-339

The above colorful home brings out the simple yet admirable features of the effective Colonial design. Each plan provides three bed rooms combined with practical efficiency for comfortable living. A home worthy of careful study.



Corner China Cabinet

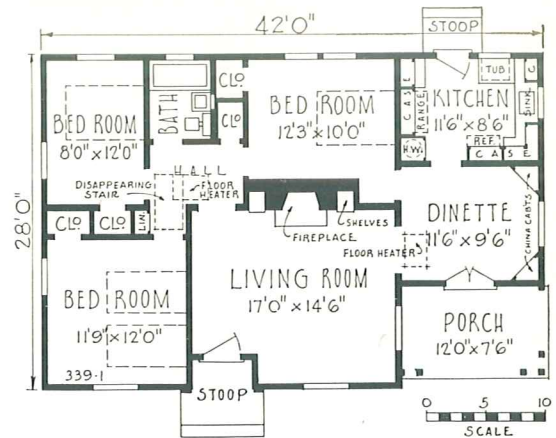


CUBAGE

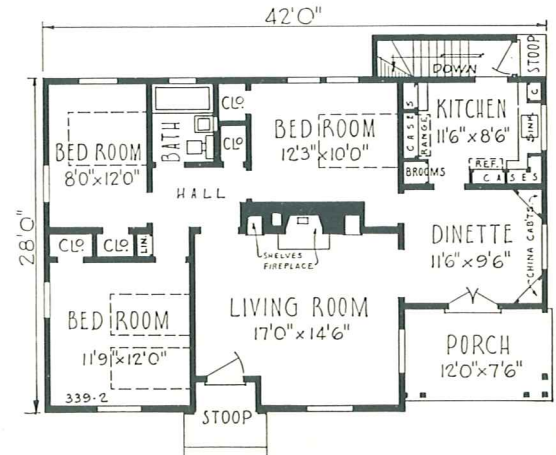
Plan 1...15,680 Cu. Ft.
Plan 2...22,225 Cu. Ft.

SQUARE FEET

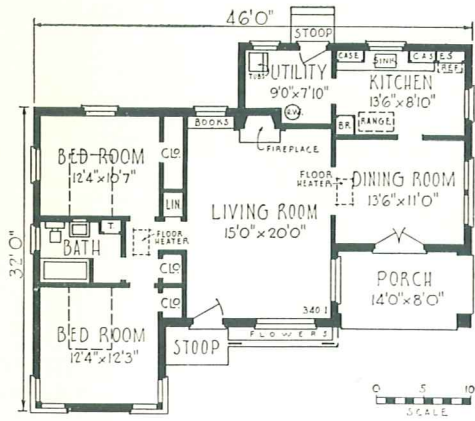
Living Area, Plan 1.1061
Living Area, Plan 2.1101
Covered Porch Area,
Plan 1 & 2..... 103



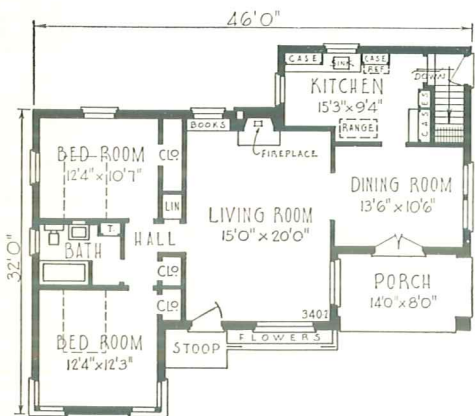
PLAN 1, WITHOUT BASEMENT



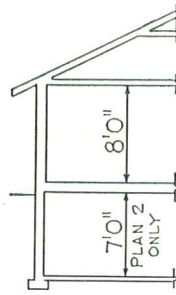
PLAN 2, WITH BASEMENT



PLAN 1, WITHOUT BASEMENT



PLAN 2, WITH BASEMENT

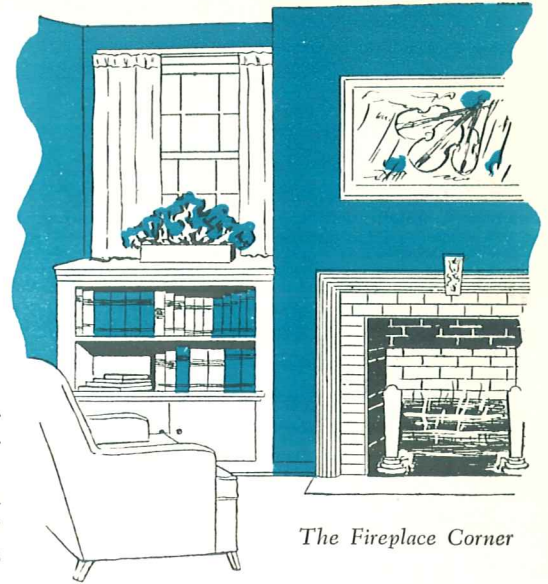


CUBAGE

Plan 1 15,640 Cu. Ft.
 Plan 2 20,730 Cu. Ft.

SQUARE FEET

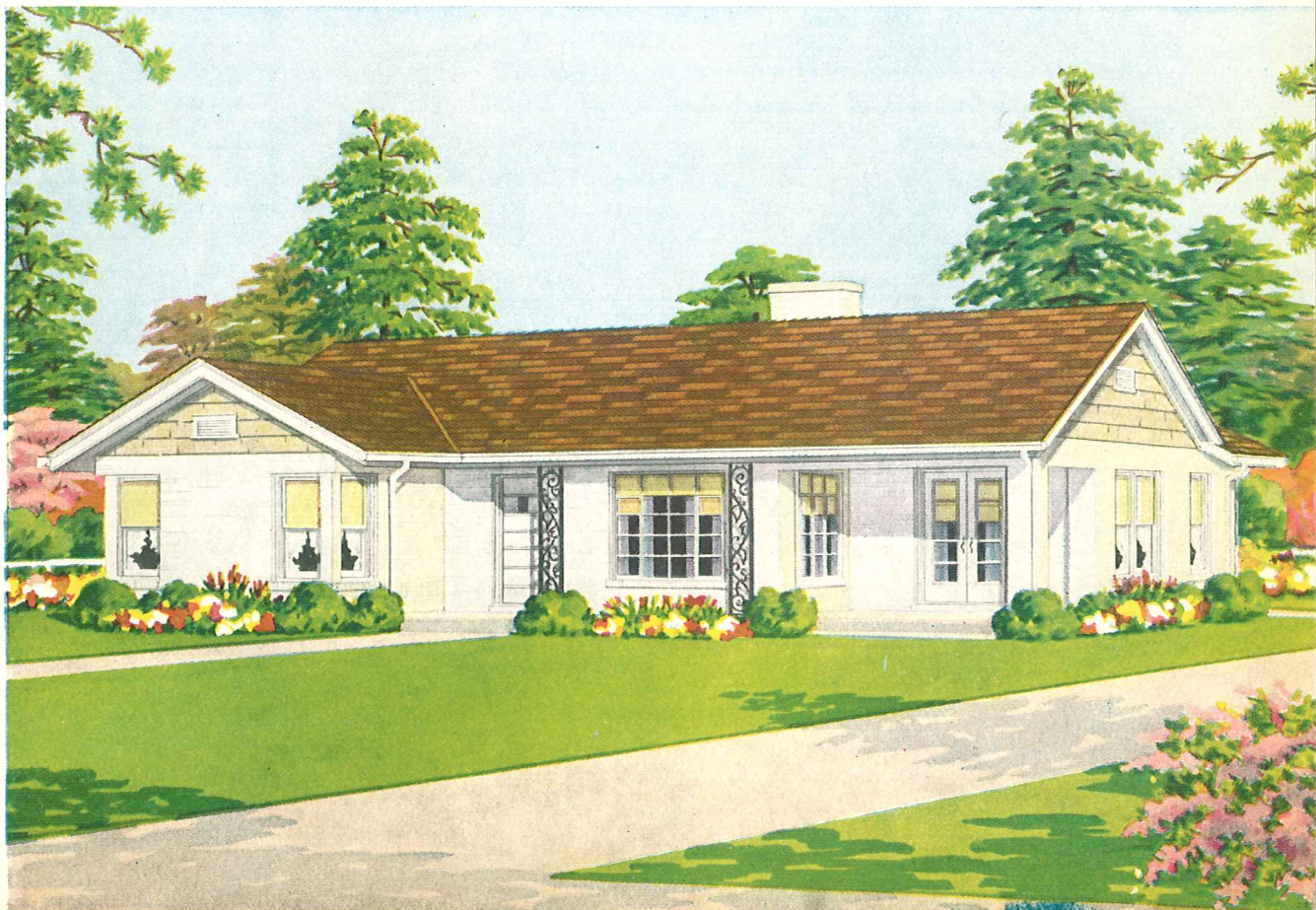
Living Area, Plan 1 1354
 Living Area, Plan 2 1327
 Covered Porch Area 113

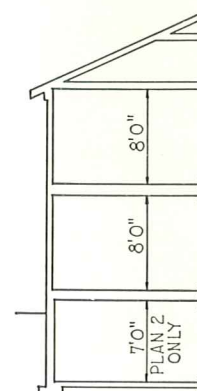
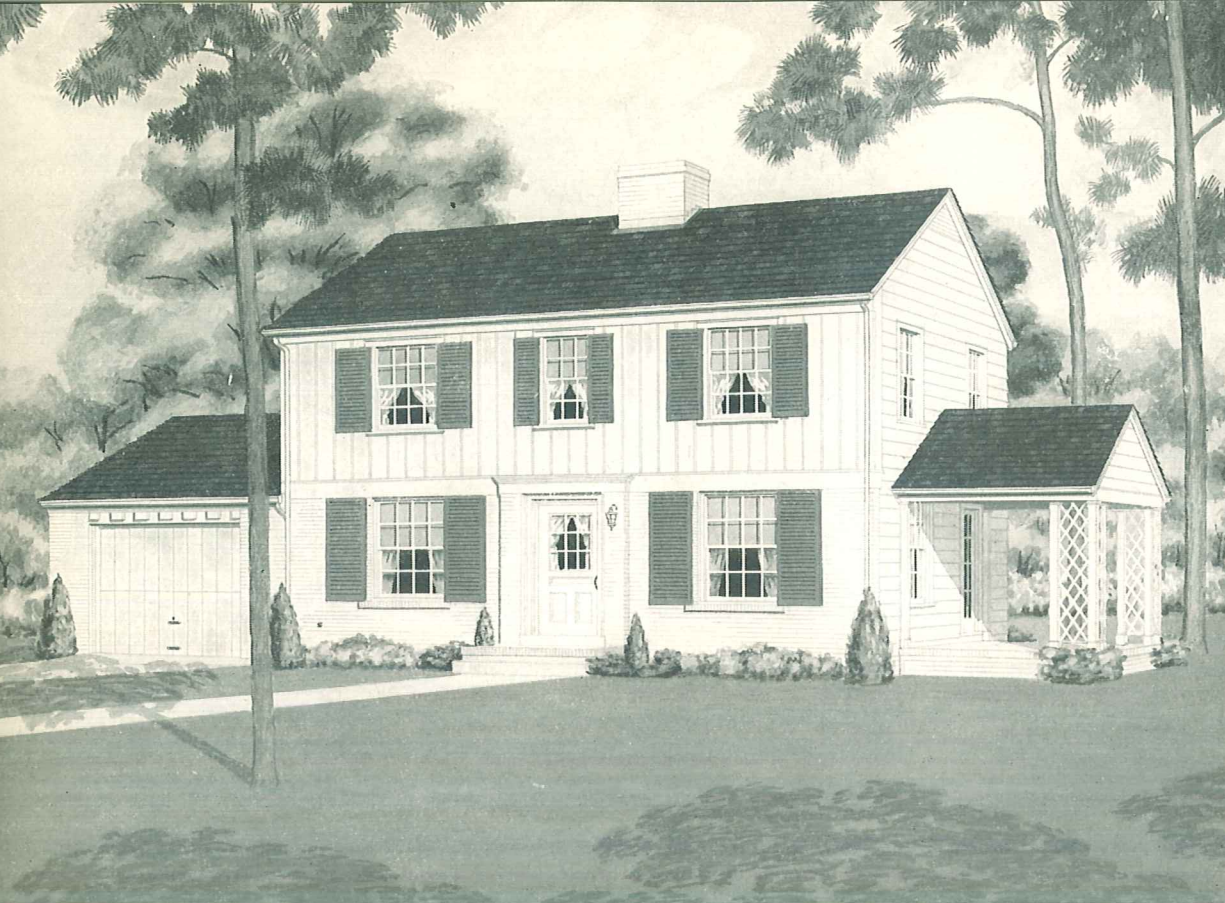


The Fireplace Corner

w-340

A home designed for exterior charm and hospitality. Five-room interior comfort and efficiency are provided. The outside walls are brick with shingled gables making an effective combination for this spreading ranch house.



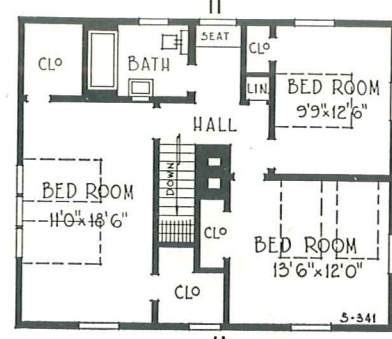


CUBAGE
 Plan 1, 18,300 Cu. Ft.
 Plan 2, 23,300 Cu. Ft.

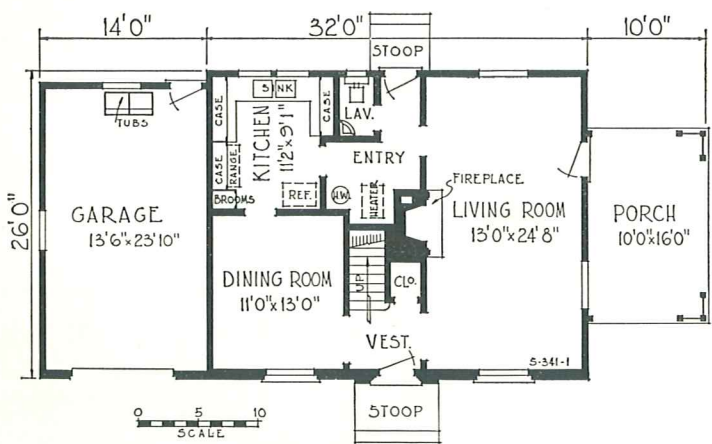
SQUARE FEET
 Living Area,
 1st Floor.....832
 Living Area,
 2nd Floor.....832
 Covered Porch
 Area160
 Garage Area.....350

w-341

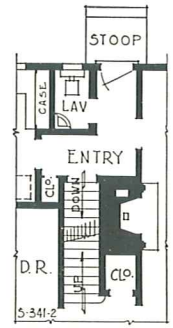
One never grows tired of a home such as this early American type. It is pleasing in appearance, comfortable in its roominess and convenient in arrangement, even to the inclusion of an attached garage and large porch.



SECOND FLOOR

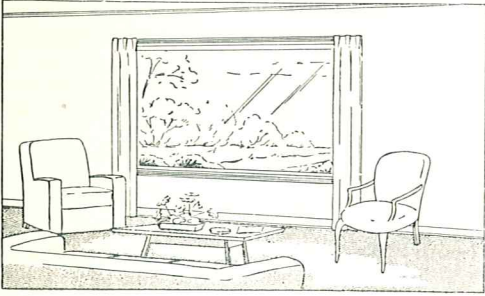


FIRST FLOOR - PLAN 1, WITHOUT BASEMENT

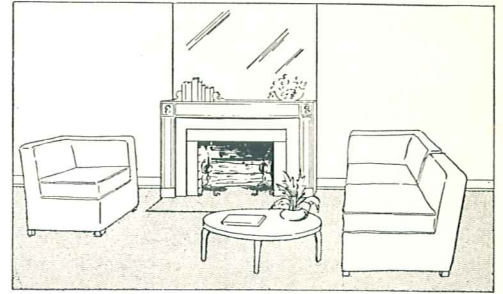


PLAN 2, WITH BASEMENT
 Note that basement stair has been substituted for heater space.

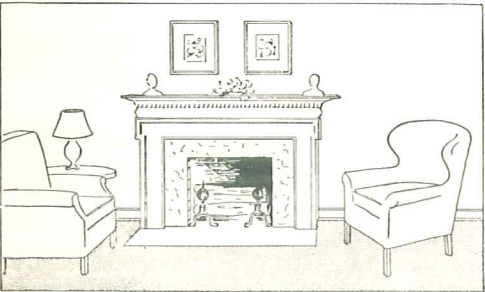
Your Home Interior



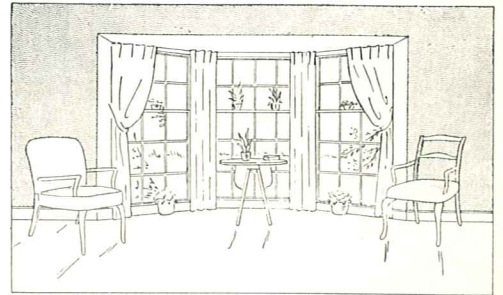
The picture window adds interest from both outside and in.



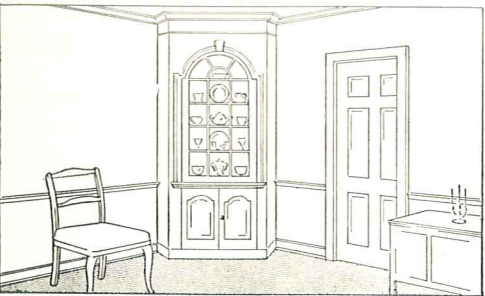
Mirrors add life, charm and spaciousness to your living room.



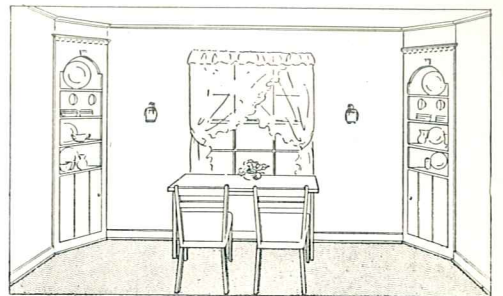
The fireplace imparts hospitality and a sense of gracious living.



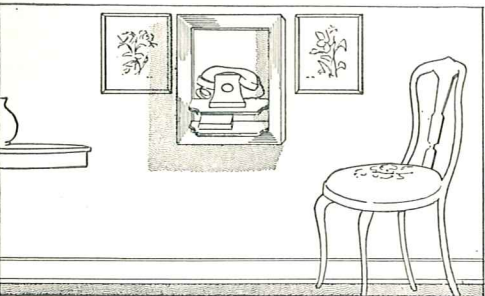
Large bay windows transform and enlarge the appearance of any room.



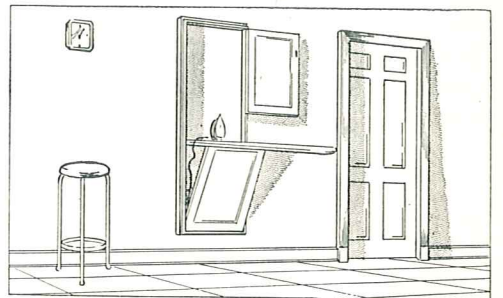
Useful corner china cabinets reflect the good taste and individuality of the owner.



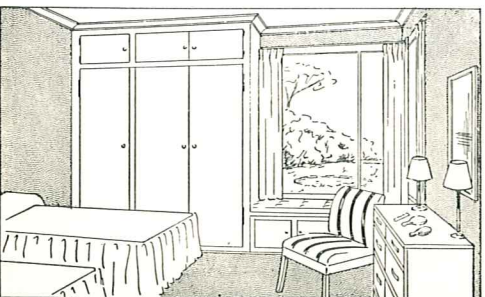
A small dinette can be very attractive, saving much dining room space.



A telephone cabinet is practical and decorative.



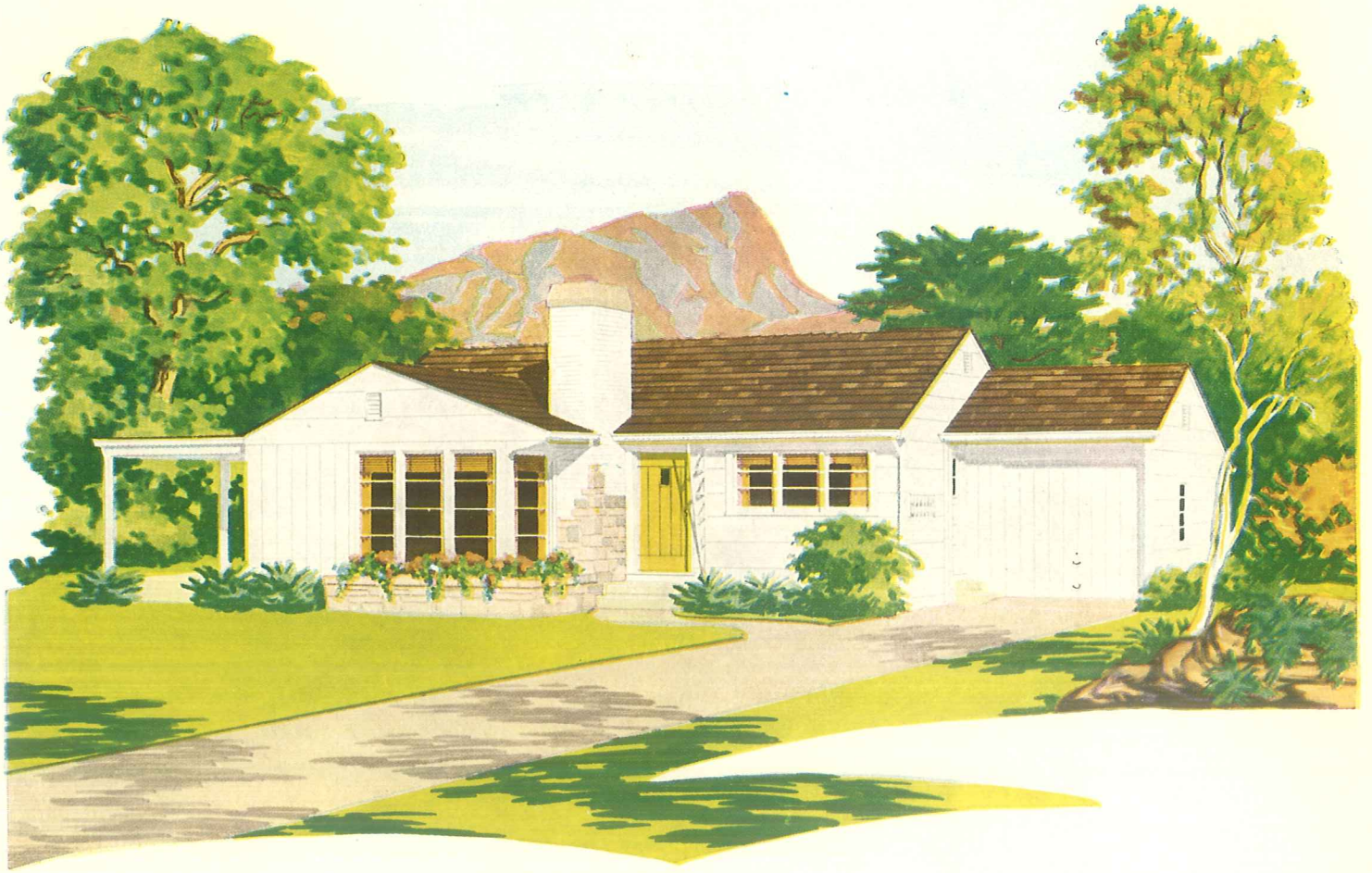
A built-in ironing board is a convenience that should not be overlooked.



Bedroom wardrobes and window seats replace closet space.

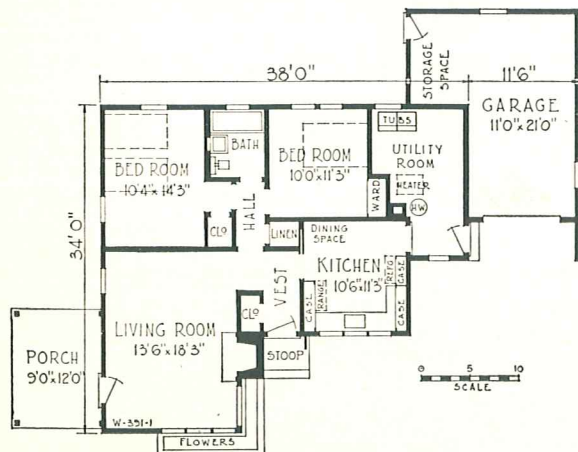


Built-in linen and towel cabinets efficiently utilize available bathroom space.

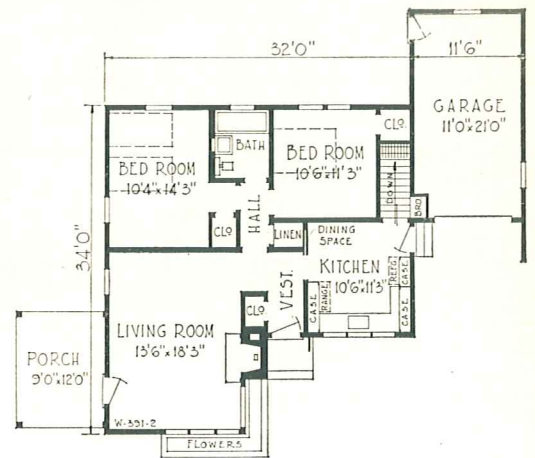


w-391

The attached garage and the porch at the left add greatly to the effect of extreme width of this relatively small home. An unusual effect is created through the four living room windows that look out upon the stone flower boxes. Stone is used also to decorate the chimney. The use of a colored door at the entrance, such as the yellow one illustrated, adds charm and individuality. Available with or without basement. Please specify Plan 1 or 2.



PLAN 1, WITHOUT BASEMENT



PLAN 2, WITH BASEMENT

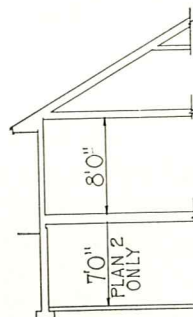


CUBAGE

Plan 1.....	17,010 Cu. Ft.
Plan 2.....	19,770 Cu. Ft.

SQUARE FEET

Living Area, Plan 1.....	1011
Living Area, Plan 2.....	913
Garage Area, Plan 1.....	318
Garage Area, Plan 2.....	260
Covered Porch Area.....	108



INDEX

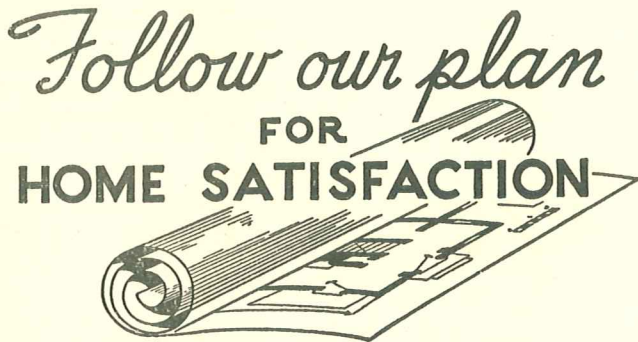
TO 61 HOME DESIGNS

Design Number	No. of Plans	Page
W-336	(4)	9
W-337	(1)	22
W-339	(2)	28
W-340	(2)	29
W-341	(2)	30
W-344	(1)	25
W-346	(1)	23
W-347	(1)	12
W-351	(1)	16
W-352	(1)	16
W-353	(1)	16
W-354	(1)	17
W-355	(1)	17
W-356	(1)	17
W-358	(2)	27
W-361	(1)	26
W-365	(2)	24

Design Number	No. of Plans	Page
W-375	(2)	1
W-376	(2)	2
W-377	(4)	3
W-378	(2)	4
W-379	(2)	5
W-380	(2)	6
W-381	(2)	7
W-382	(2)	8
W-383	(2)	10
W-384	(2)	11
W-385	(2)	13
W-386	(2)	14
W-387	(2)	15
W-388	(2)	18
W-389	(2)	20
W-390	(2)	21
W-391	(2)	32



FEATURES: "PICTURE WINDOWS," PAGE 25; "YOUR HOME INTERIOR," PAGE 31; "YOUR KITCHEN," PAGE 19



● **HOME BUILDING** is a complicated process in which a mistake means a loss in time, money and satisfaction. To build a satisfactory home — with no after regrets — we strongly recommend the use of carefully made, accurate blue-print working plans. It is essential, safe and economical to first construct the house on paper. Accurate plans and specifications must be submitted to a loaning agency for its approval when you apply for a mortgage loan on a new home.

● **EXPERIENCED DESIGNERS.** Years of experience in house planning and construction and an architectural department composed of skilled draughtsmen, architects, and engineers, are the elements upon which plans of the utmost accuracy and completeness in regard to design, strength, durability, and comfort and home conveniences, are created.

● **BLUE PRINT PLANS.** Our blue print plans include the following complete drawings for each design: Basement or foundation plan, first floor plan, second floor plan, front elevation, right side elevation, left side elevation, rear elevation, sections and detailed drawings, all necessary framing plans. All working plans are drawn to standard scales. Blue prints for each design are available.

● **REVERSED PLANS.** Obviously, a plan designed for a lot facing east will not result in the best exposure when your lot fronts to the west. Plans of homes as illustrated in this book are available either as shown or reversed, as may be required.

● **SUPPLEMENTARY DETAILS.** Further supplementary details for any of our plans will be furnished upon request.

● **SPECIFICATIONS** are statements of particulars which tell what you are going to receive in materials and workmanship. Building contract forms are also available.

