



Designating  
**HISTORIC  
RESOURCES**

Your **KEY** to what it means to be  
declared a historic property!

Michael Houser, State Architectural Historian  
October 2019



# Historical Designation of Properties

## Seeks to

- Identify and locate important properties
- Makes a case for Historical Significance and Integrity
- Explains how a resource meets the criteria



# Levels of Listing

Historic Designations

**National Historic Landmark**



**National Register of Historic Places**

Level of Significance: Local, State & National



**State Register**



**Local Register**



# Jurisdiction

## Historic Register

### National Register of Historic Places

- National Park Service designates
- **Honorary** - no protection
- Incentives - property values increase, grant fund eligibility, tax incentives (commercial)



### Washington State Heritage Register

- Advisory Council on Historic Preservation designates
- **Honorary** - no protection

### City/County Register of Historic Places

- Local Historic Preservation Commission designates
- **Regulatory**- design review
- Incentives - Special Valuation, Adaptive Use Permits,
- protection for perpetuity

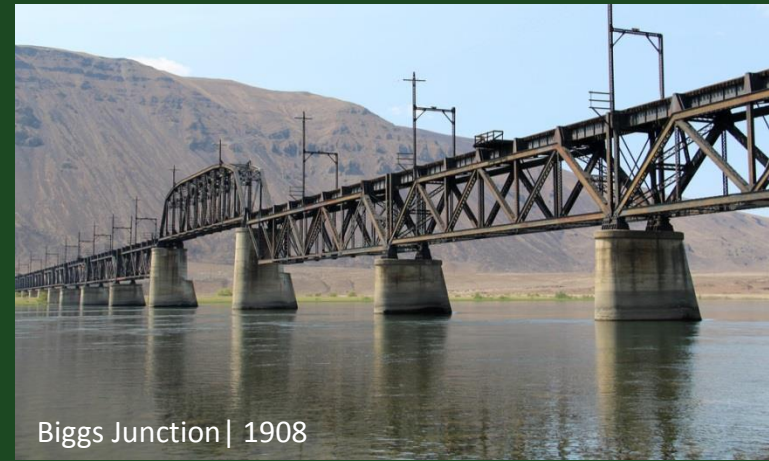


THE

50

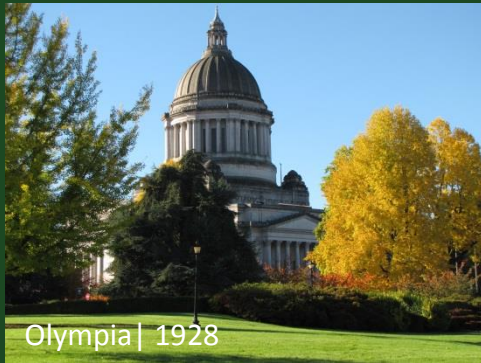
RULE

Historic  
Properties are  
those which are  
**more than**  
**50 years old**



# Historic Properties

1966 - 1916



# Historic Properties

2019-1969



Bellevue | 1969



Sea Tac | 1963



Montlake Terrace | 1967



Mercer Island | 1971



Olympia | 1957



# Resource Types

## Eligible for Listing

### Districts

Significant concentration, linkage, or continuity of resources united historically or aesthetically

### Buildings

Created principally to shelter any form of human activity

### Structures

Functional construction made usually for purposes other than creating human shelter



### Objects

Primarily artistic in nature, small in scale and maybe movable

### Sites

Location of a significant event where the location itself presents value



# Three Basic

# Concepts

to be listed on a Register.



01

Historic Integrity



02

Historic Context



03

Historic Significance |  
Criteria



# 01

## Historic Integrity is

The authenticity of a property's historic identity, evidenced by the survival of physical characteristics that existed during the property's historic period.

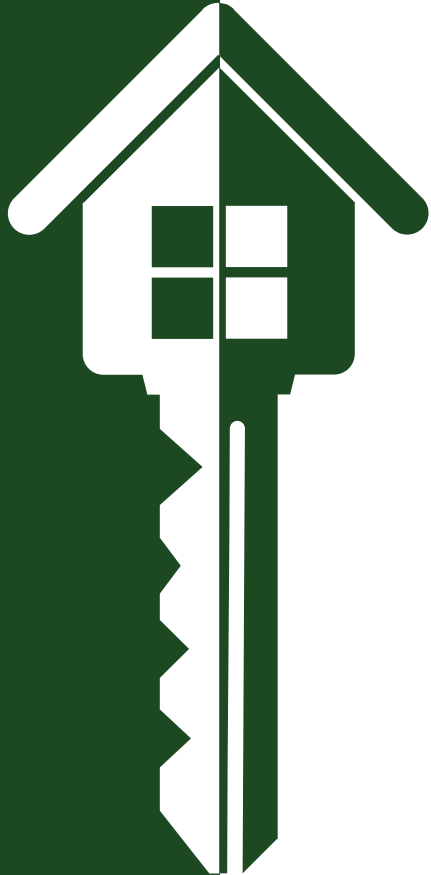
Historic integrity is the ability of a property to convey its significance.

# Seven Qualities of Integrity

All seven qualities do not need to be present for eligibility as long as the overall sense of past time and place is evident



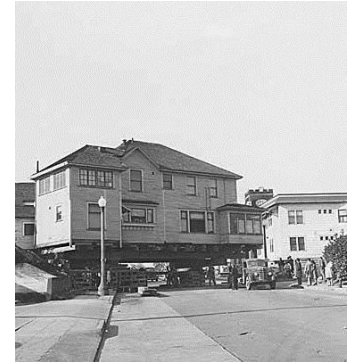
- 1) Location
- 2) Design
- 3) Setting
- 4) Materials
- 5) Workmanship
- 6) Feeling
- 7) Association

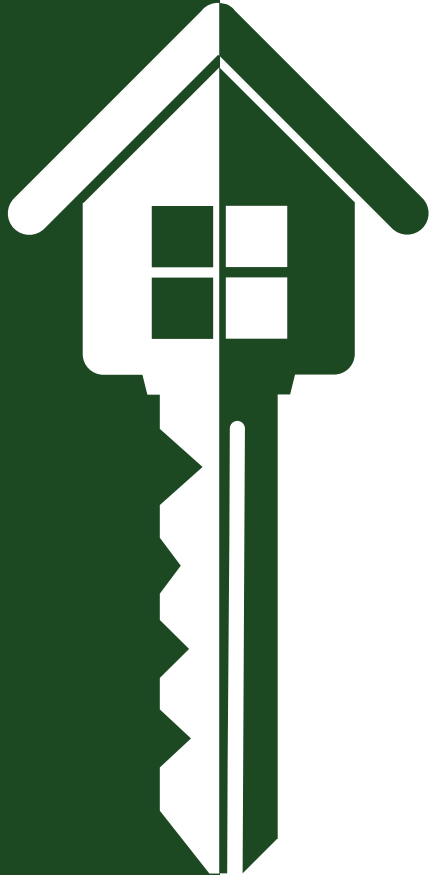


# 01.1

## Location

The place where the historic property was constructed or the place where the historic event occurred.



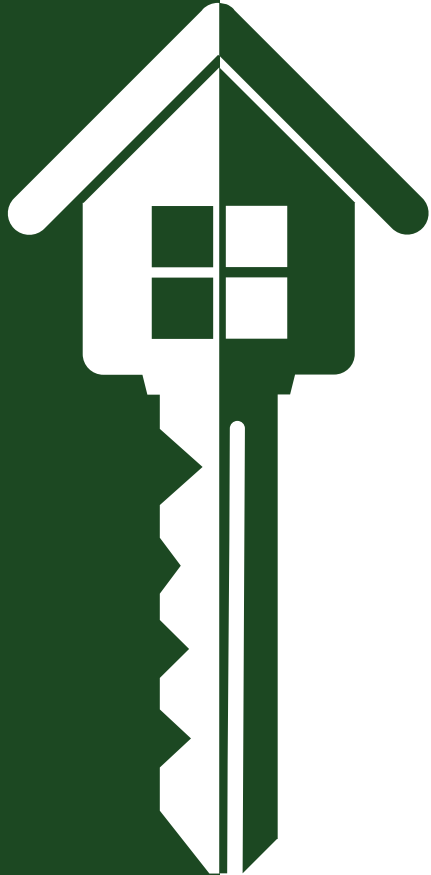


# 01.2

## Design

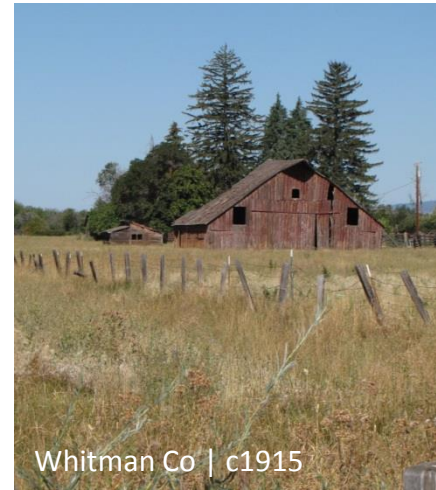
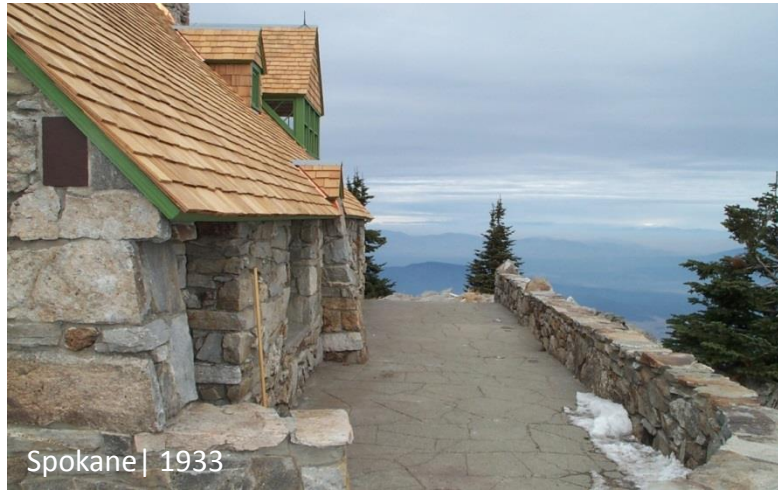
The combination of elements that create the form, plan, space, structure and style of a property.

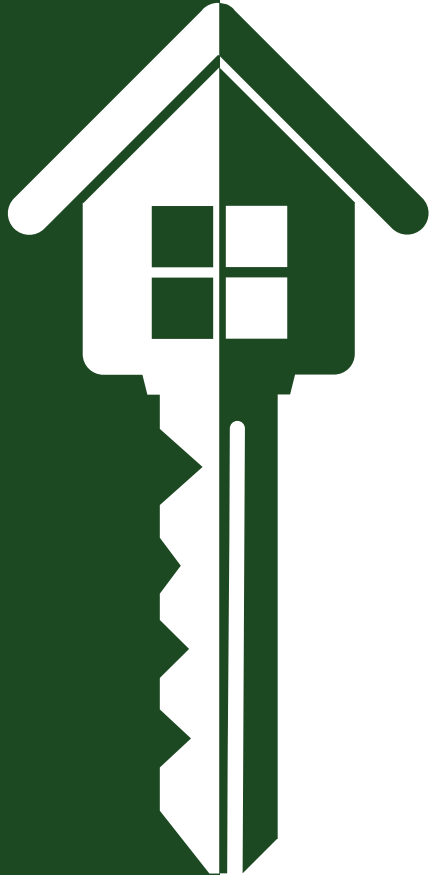




# 01.3 Setting

The physical environment of a historic property.

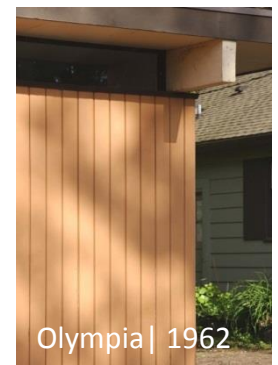




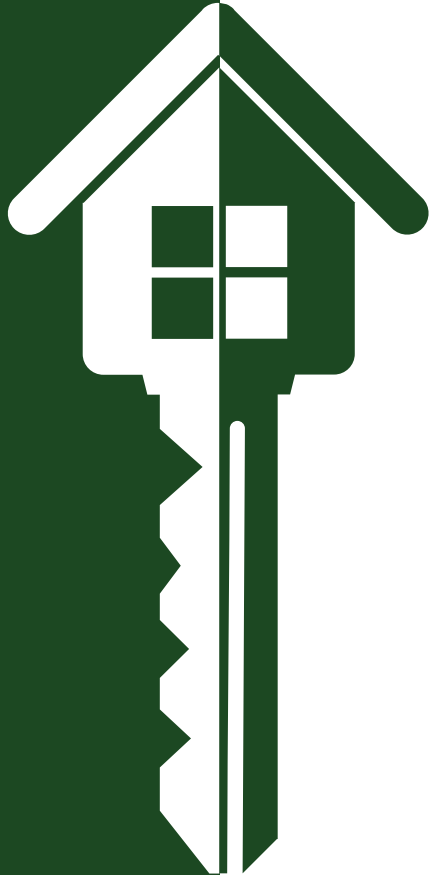
# 01.4

## Materials

The physical elements that were combined or deposited during a particular period of time and in a particular pattern or configuration to form a historic property.





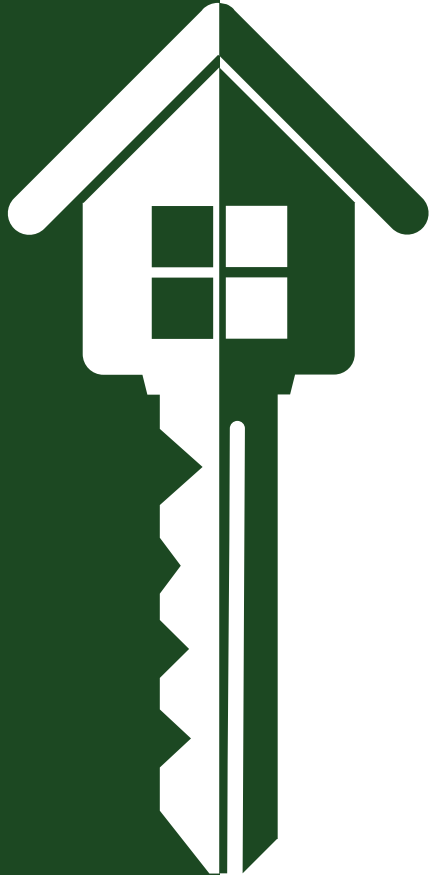


# 01.5

## Workmanship

The physical evidence of the crafts of a particular culture or people during any given period in history or prehistory.



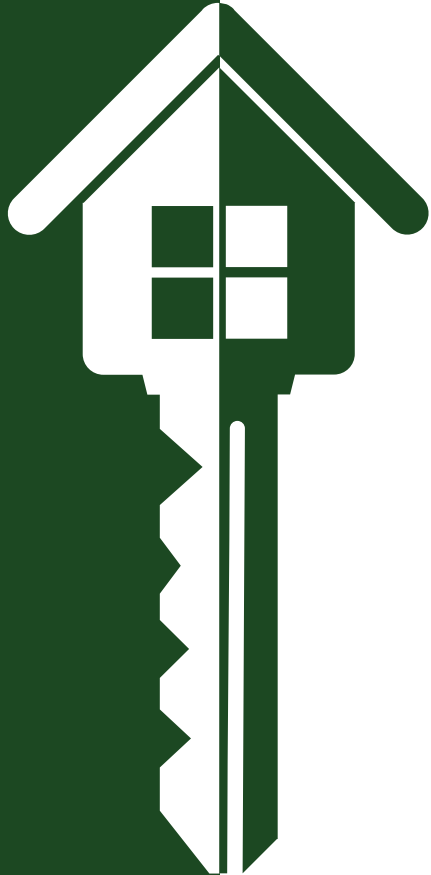


# 01.6

## Feeling

A property's expression of the aesthetic or historic sense of a particular period of time.



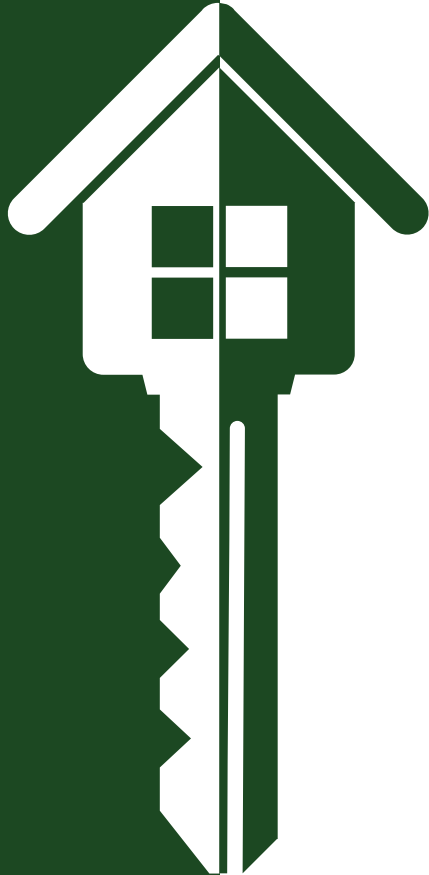


# 01.7

## Association

The direct link between an important historic event or person and a historic property.





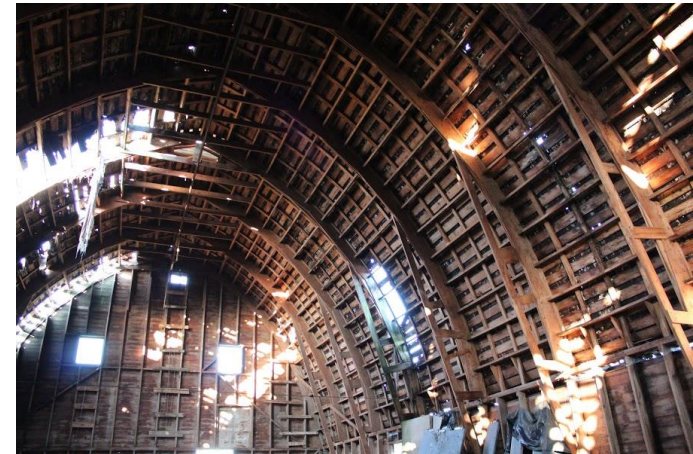
# Changes over time

Can become significant in their own right



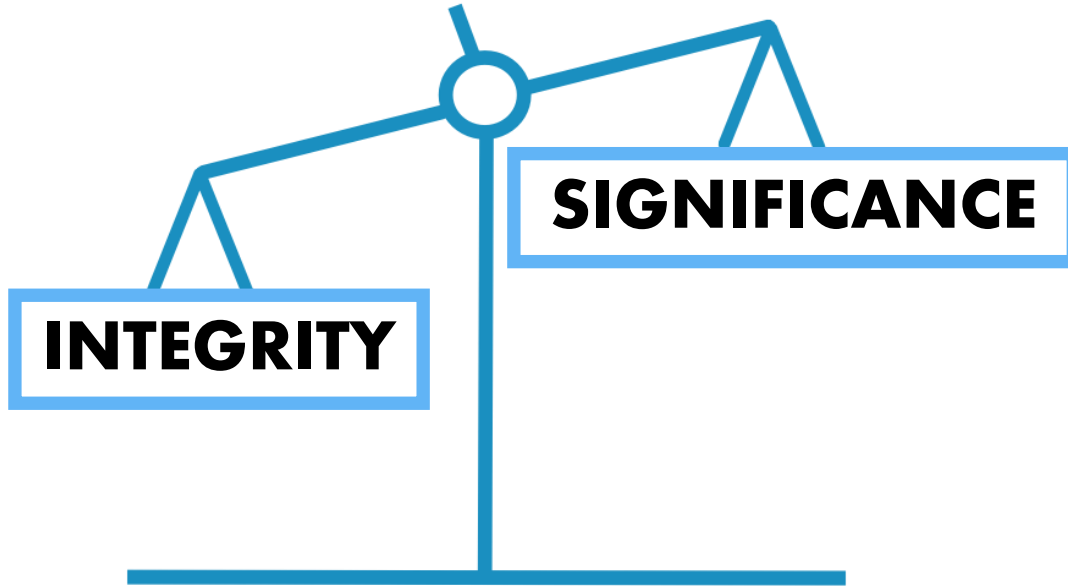
# Condition

is not a factor in **most** cases



# ELIGIBLE OR NOT ELIGIBLE

That is the Question!



# The Assessment

## Four basic questions



### Age

Is the Resource over 50 years old?



### Period of Signif.

Length of time when a property was associated with important events, activities, or persons, or attained the characteristics which qualify it for listing.



### Character Defining

What are the Character Defining Features of the resource during its period of significance?



### What is left

Which Character Defining Features are still present?



## 02

### Historic Context

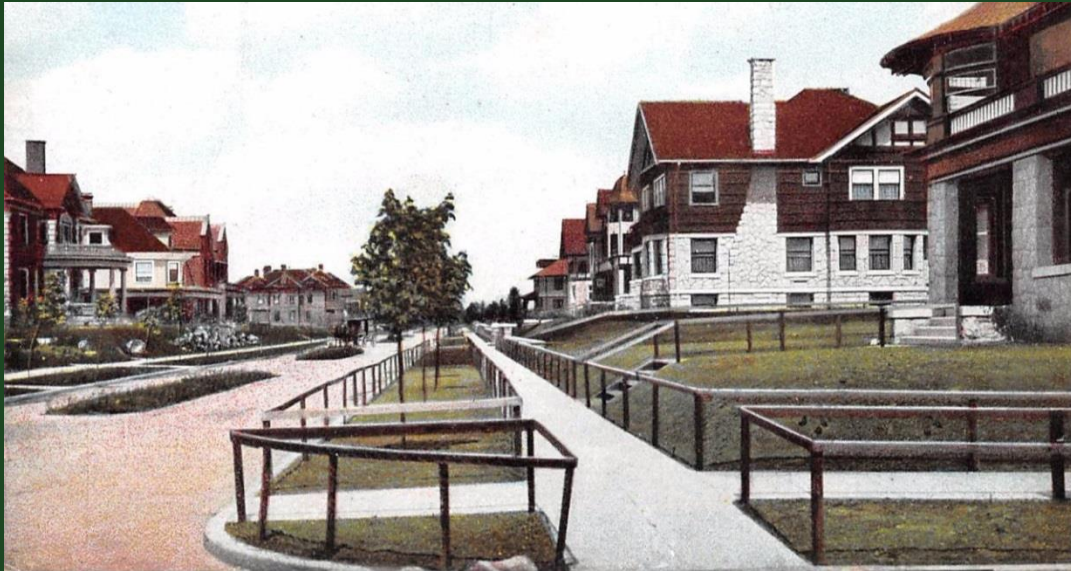
The refers to the social, religious, economic, and political conditions that existed during a certain time and place.

Historic Context helps us understand what motivates people to behave as they did.



# Historic Context

Identify what the property represents:  
the theme(s), geographical limits, and chronological  
period, that provide a prospective from which to  
evaluate the property's significance.



# 03

## Historic Significance

The Criteria  
for listing on a  
historic register

# Criteria A

Properties that are associated with events that have made a significant contribution to the broad patterns of our history



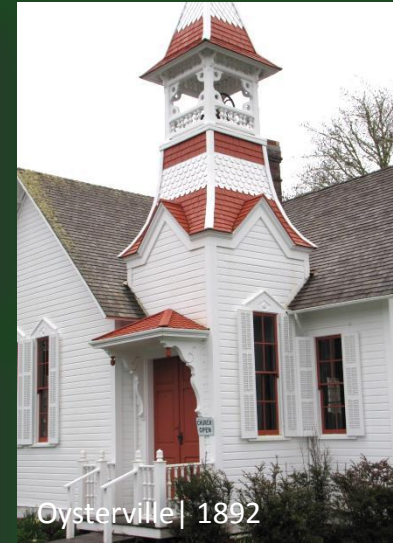
Mukilteo | 1906



Yakima | 1952



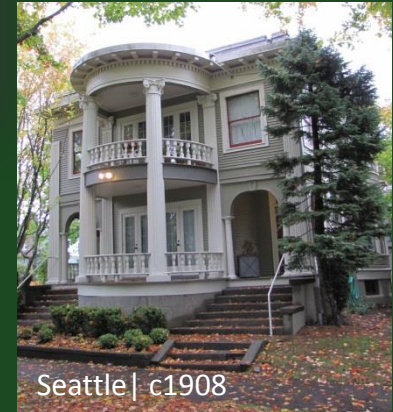
Deception Pass | 1934



Oysterville | 1892



Seattle | 1961



Seattle | c1908

- Type of event
- Association of the property
- Significance of the association

# Criteria B

Properties that are associated with the lives of **persons** significant in our past.



Seattle | 1975



Tacoma | 1908



Spokane | 1913

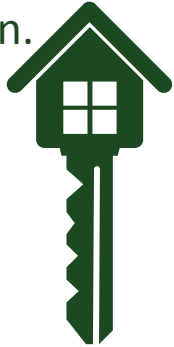


Newport | 1914

- Must be individually significant within a historic context
- Associated with a person's productive life

# Criteria C

Properties that embody the distinctive characteristics of a type, period, or method of construction or represent the work of a master, or possess high artistic values, or represents a significant and distinguishable entity whose components lack individual distinction.



Rosalia | 1923



Spokane | 1926



Richland | 1964

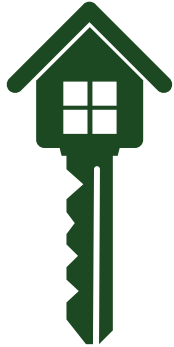


Shelton | 1930

- Patterns of features
- Example within context
- Expressive of career

# Criteria D

Properties that have yielded, or may be likely to yield, information important in prehistory or history.

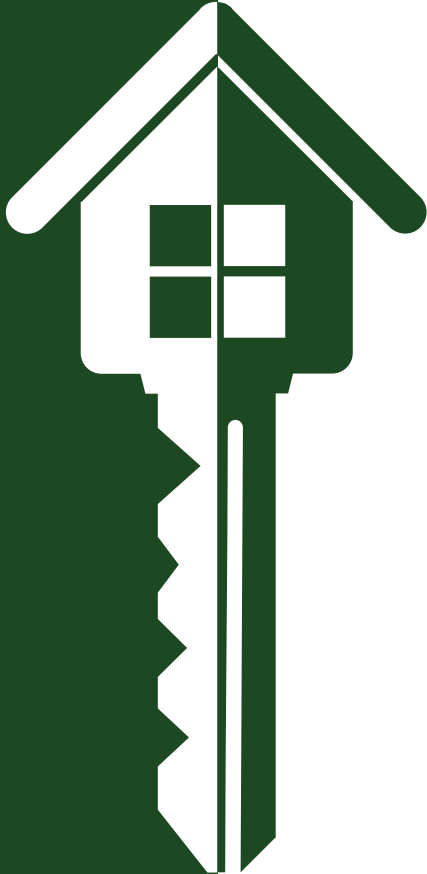


# Who may complete a Register Nominations



**Anyone**

**Consultant**



# Owner Consent

to LIST you need....

- No Consent for Public Property
- Consent for Private Property
  - Districts Need  
Majority of approval by property owners (notarized letter)
    - One “Vote” per owner.
    - Notice posted in newspaper (Fed requirements)
    - Additional notice / public outreach  
(WA State requirement)



LaConner | c1895



# Listing Timeline / Process

- Staff level review – 2 drafts, 4 months before ACHP meeting
- Gov Advisory Council Review & Recommendation
  - 3 review meeting per year
- NPS 45 to 60 day review
- Listing!



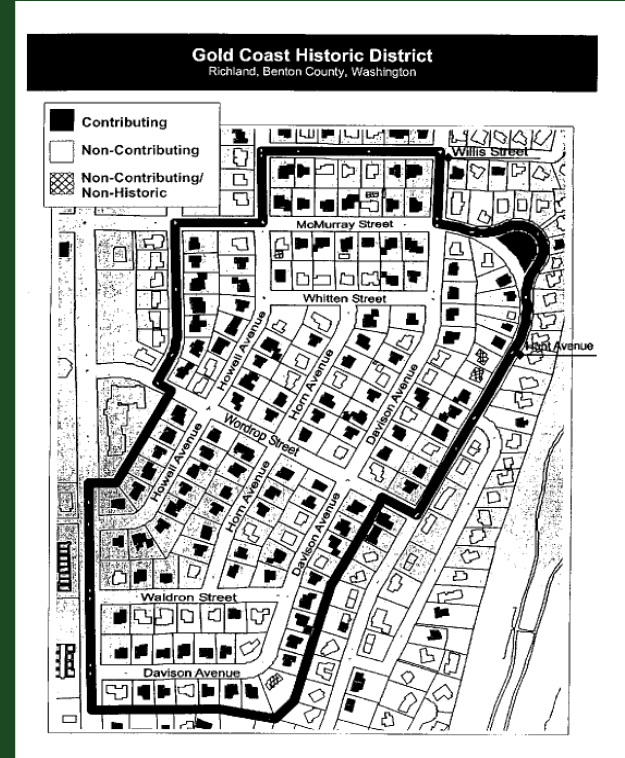
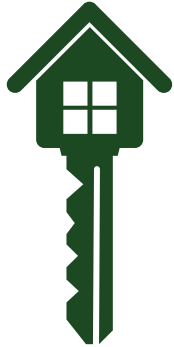
# Establishing Historic Districts



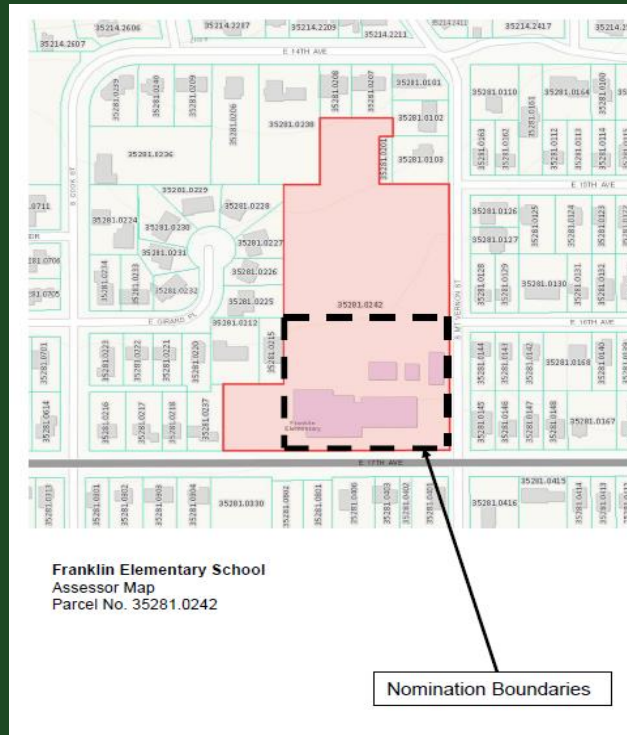
Based On:

- Age
- Integrity

Contributing  
vs.  
Non-Contributing



# Defining Boundaries of Individual Properties & Historic Districts



Based On:

- Significance
- Integrity

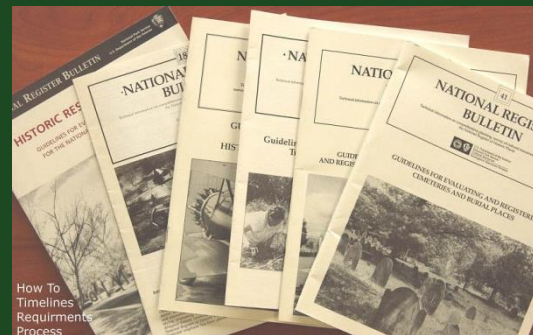
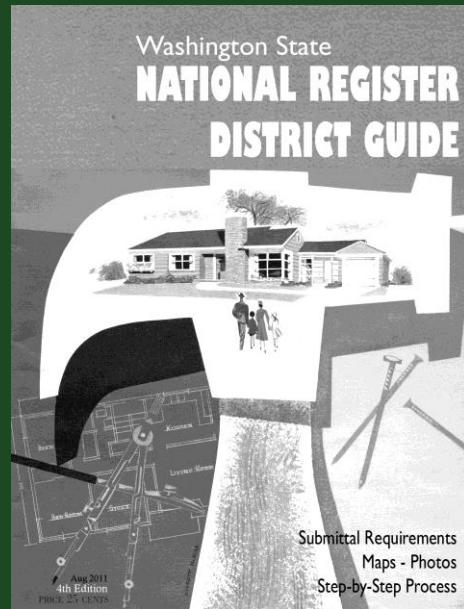
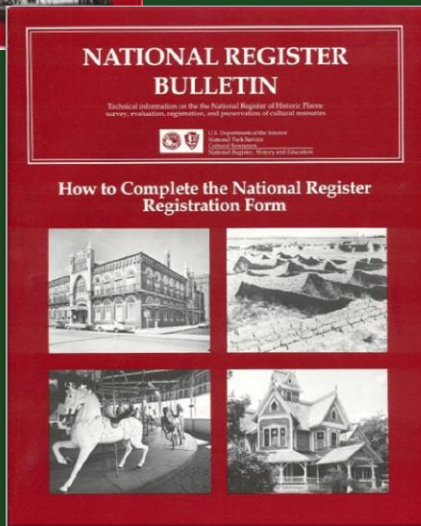
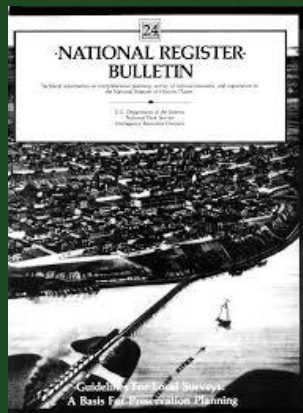
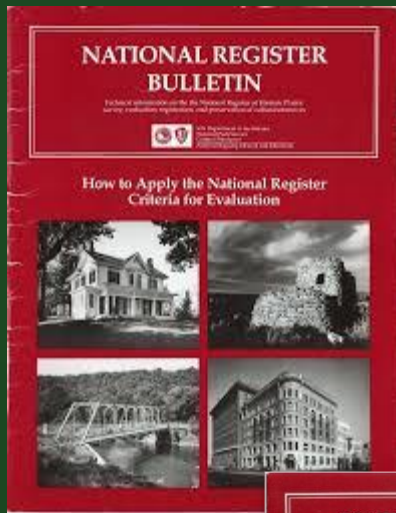


Cama Beach State Park



Oysterville

# NATIONAL REGISTER Guidebooks



# The Myths

of listing on the National Register of Historic Places

My property  
value will go down



Someone is going to tell me  
what I can and can't do with  
my own property

You get a bronze plaque  
that says your property  
has been listed



# The Myths

of listing on the National Register of Historic Places

You have to restore the property once its listed



If my property gets listed I have to open it up to the public

If my property is listed, I can't demolish the building



# The Myths

of listing on the National Register of Historic Places

There are grant funds available to help me restore my historic property once its listed



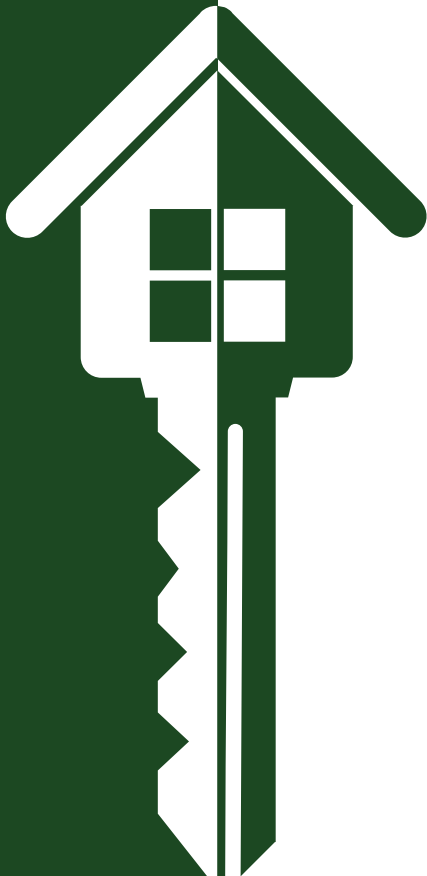
I won't be able to change anything





# Results

of listing on the National Register of Historic Places



**01** Eligibility for federal tax provisions.

**02** Consideration in planning for federally funded, licensed, or assisted projects (Sec 106)

**03** Consideration in issuing a surface coal mining permit.

**04** Qualification for federal historic preservation grants.

**05** Special Consideration with regard to Building Code Requirements.



# Results of Listing

on the National Register of Historic Places

Formal  
Documentation



Recognition  
Raising the  
Public Profile



Individual &  
Community Pride

Inspire better  
design of infill  
& alterations



# Results of Listing

on the National Register of Historic Places

Increased  
Tourism



Enhance Business  
recruitment



Spur zoning  
Changes

Increased  
Resale Values



# National Register of Historic Places

**VS**

# Locally Designated Historic Properties

- Specific/detailed application procedure.
- Offers no real protection of historic resources in a community.

- Local designation is usually more lenient than National Register - this allows it to be more inclusive.
- Local designation offers protection of a community's historic resources by allowing for a fair design review process.

# National Register of Historic Places

VS

# Locally Designated Historic Properties

- No review of alterations and/or additions unless federal undertaking is part of project.
- No protection against demolition
- Great, if you are only interested in an honorary designation.

- Review of exterior alterations via a local review board.  
(some have voluntary compliance, but mandatory review)
- Some protection against demolition.
- Better, if you really want to protect your community.

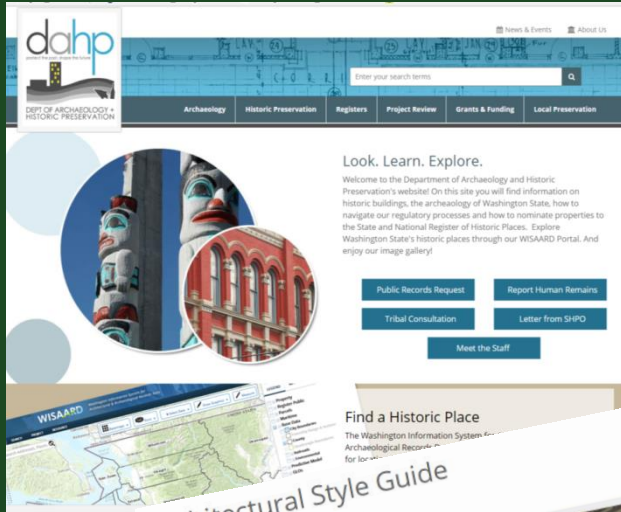
# Designated Historic Sites - Statewide

- **1,700+** listings on the National Register of Historic Places statewide.
- **600+** listings just on the Washington Heritage Register of Historic Places.
- **25** National Historic Landmark listings.
- **734** Heritage Barn Register listings



# Technical Assistance

We are here to help you!



## Architectural Style Guide

Late Victorian: 1860-1900



Carpenter Gothic



Chateaufort



Italianate



Queen Anne



Richardsonian



Second Empire



Shingle Style



Stick Style

- Architectural Style Guide
- Financial Assistance
- Technical Preservation Guidance
- WISAARD
- Architects Biographies
- BLOG
- Education & Training
- Preservation Laws

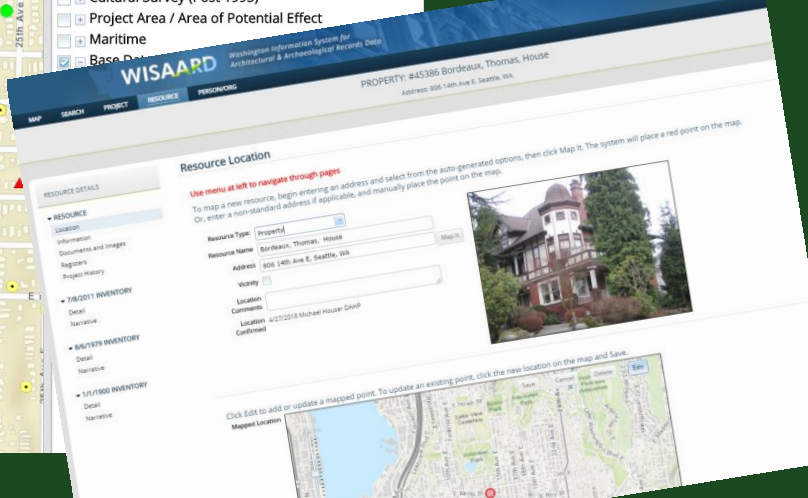
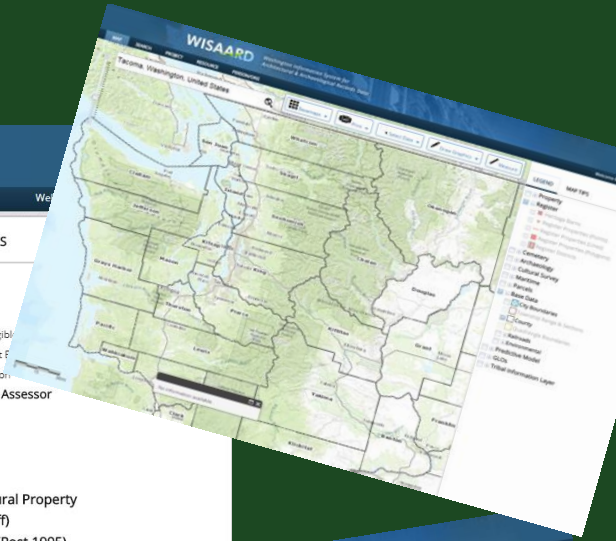
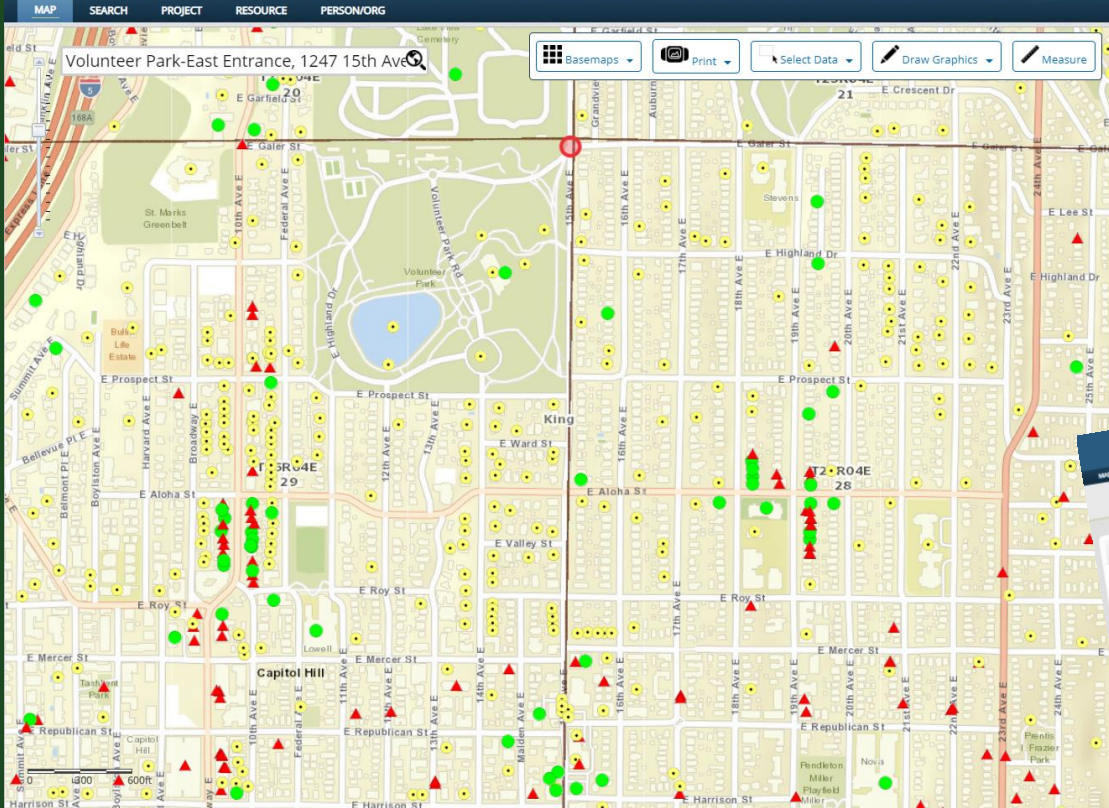


Find us at  
[www.dahp.wa.gov](http://www.dahp.wa.gov)

# WISAARD

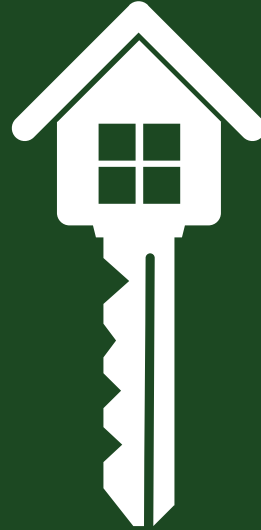
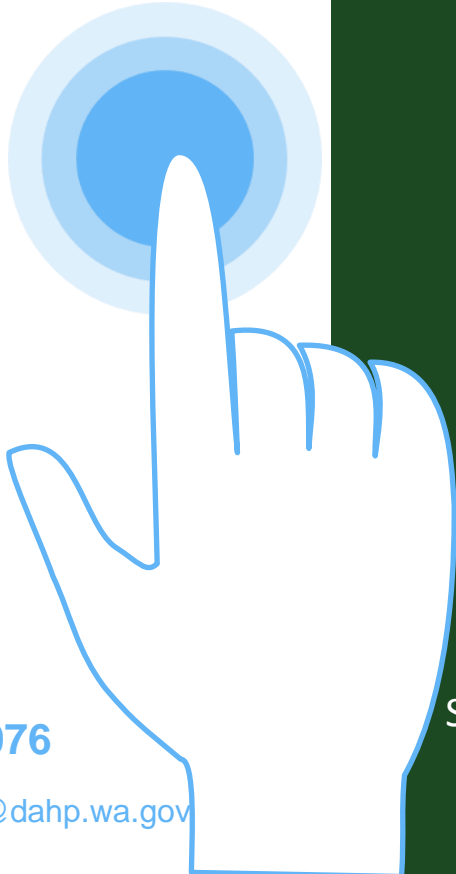
WISAARD

Washington Information System for  
Architectural & Archaeological Records Data



# Michael Houser

*State Architectural Historian*



## Questions?

Send me a note, text, letter,  
twitter, snapchat , call,  
message, etc.....

**(360) 586-3076**

[Michael.houser@dahp.wa.gov](mailto:Michael.houser@dahp.wa.gov)



Puyallup | 1889