

# Natcor

**EXTRUDED METAL**



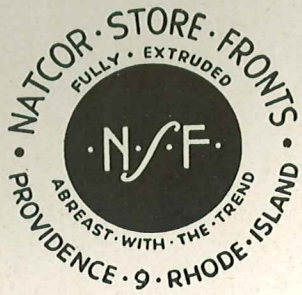
**Store Fronts**

**NATCOR—Providence 9, R. I.**

1947



# NATCOR EXTRUDED GLASS SETTINGS



## NATCOR SECTIONS

Beautifully designed Extruded Alumilited Aluminum Sections are built for years of service, in fluted and square interlocking mouldings which are interchangeable. They assure clearly defined lines and smooth surfaces that can be obtained only in Extruded Metal.

## ACCEPTANCE

Natcor Extruded Alumilited Aluminum Metal Store Fronts have won the acclaim and endorsement of Architects throughout the country.

## ECONOMICAL

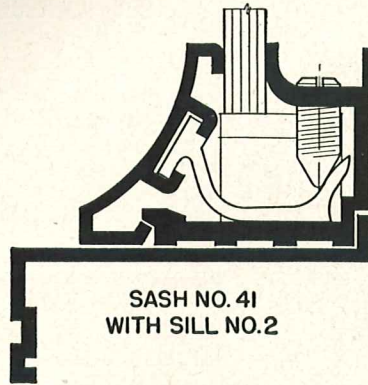
Store Fronts can be completed with a combination of just a few sections due to the interlocking feature, and are easily installed with minimum labor costs.

## HOW FURNISHED

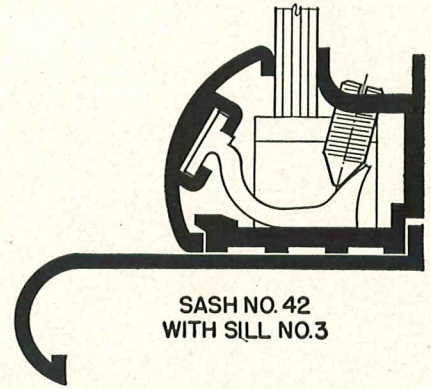
All glass settings and accessory mouldings are made only in Extruded Aluminum in full 21' stock lengths and shipped to the glass trade throughout the U.S.A., Canada and Mexico, from our new and exclusive plant located in Providence, R. I.

## PRICE

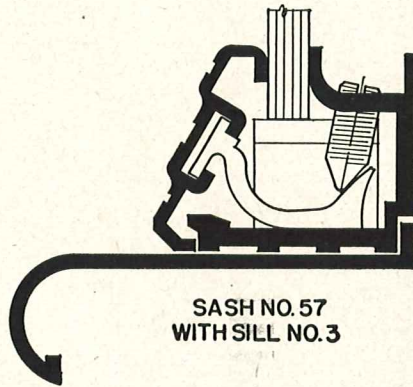
Natcor Extruded Alumilited Aluminum Store Front Mouldings are of the highest quality and priced to meet competition of other glass settings of a like quality.



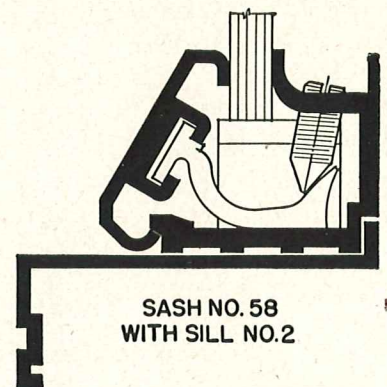
SASH NO. 41  
WITH SILL NO. 2



SASH NO. 42  
WITH SILL NO. 3



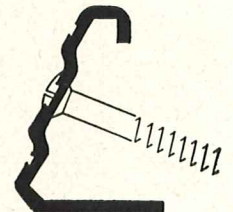
SASH NO. 57  
WITH SILL NO. 3



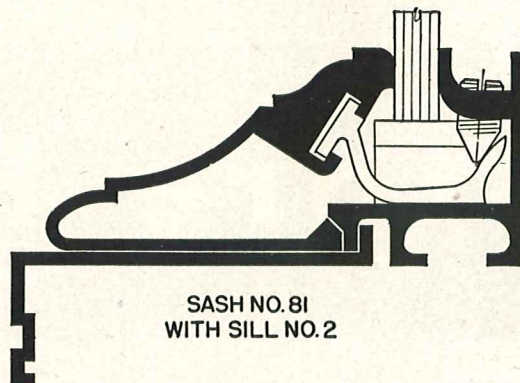
SASH NO. 58  
WITH SILL NO. 2



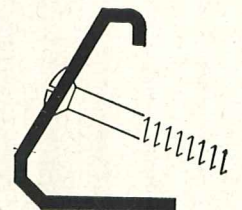
SASH NO. 80  
WITH SILL NO. 3



SASH NO. 19



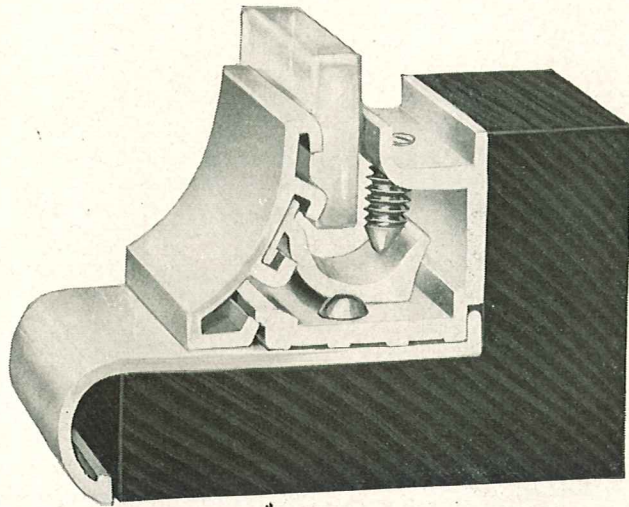
SASH NO. 81  
WITH SILL NO. 2



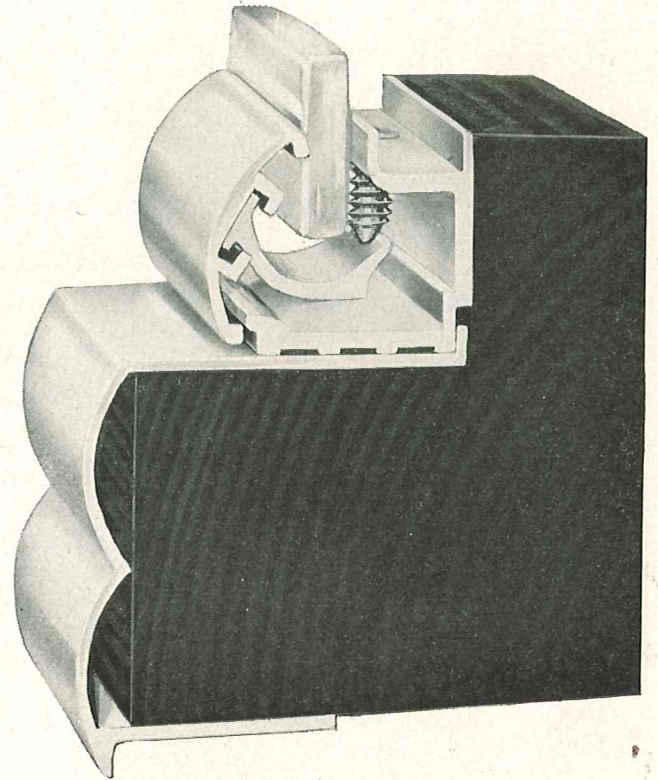
SASH NO. 58A

Details Full Size





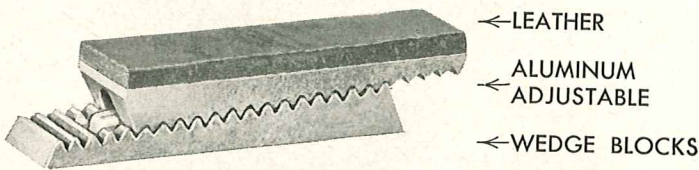
SASH NO. 41 WITH SILL SECTION NO. 3



SASH NO. 42 WITH SILL MOULDING NO. 22 S&T

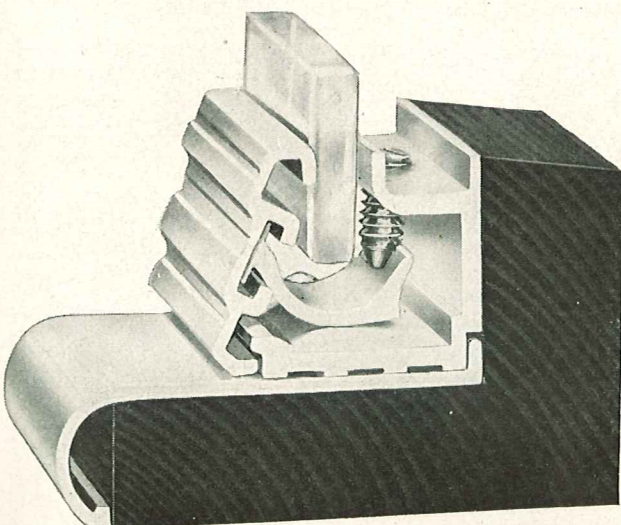
### NATCOR GLASS SETTINGS

Our glass settings have the following features. They will support varying thicknesses of glass, are easy to mitre, wide trough permits drainage of excessive moisture from glass, invisible indirect screw pressure, screw can not possibly touch glass. Wide solid aluminum, adjustable setting blocks with supporting leather cushion, permits quick setting of the glass, and are secure and dependable. Both inside and outside sections of sash are fully extruded.

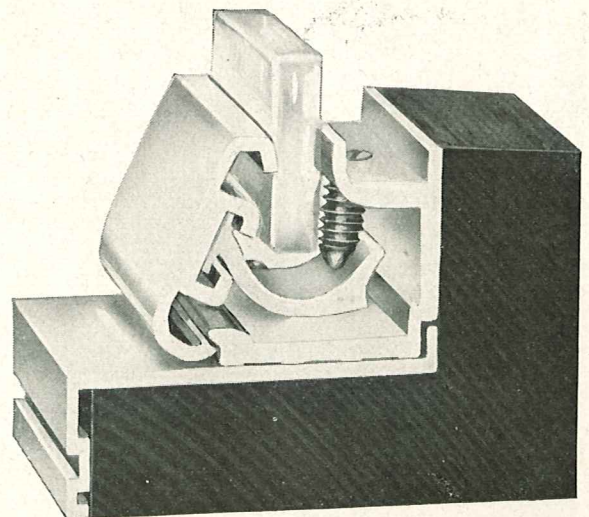


**NATCOR ADJUSTABLE SETTING BLOCK**  
(Illustration slightly less than full size.)

For other Sill Mouldings  
see Pages: 2, 6, 7, 10 and 11



SASH NO. 57 WITH SILL SECTION NO. 3



SASH NO. 58 WITH SILL SECTION NO. 2

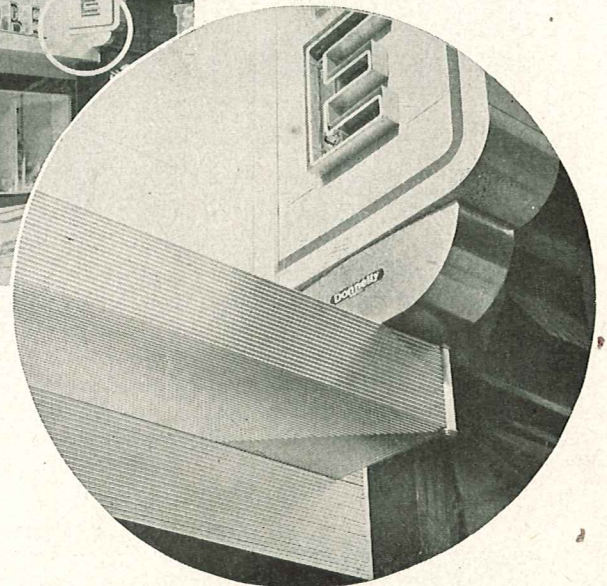


TYPICAL NATCOR INSTALLATIONS



*Below:* Detail at end corner of cornice as shown in circle.

*Above:* Cornice as illustrated shows a combination of no. 8 and no. 9 sections. No visible fastening necessary.



*Above:* Glass block panel framed with a combination of no. 22, no. 23 and no. 24. Display cases fabricated from a combination of no. 1 and no. 12.

*Below:* No. 189 concealed awning hood cover, shown partly open, made from a combination of no. 3, no. 8 and no. 12.

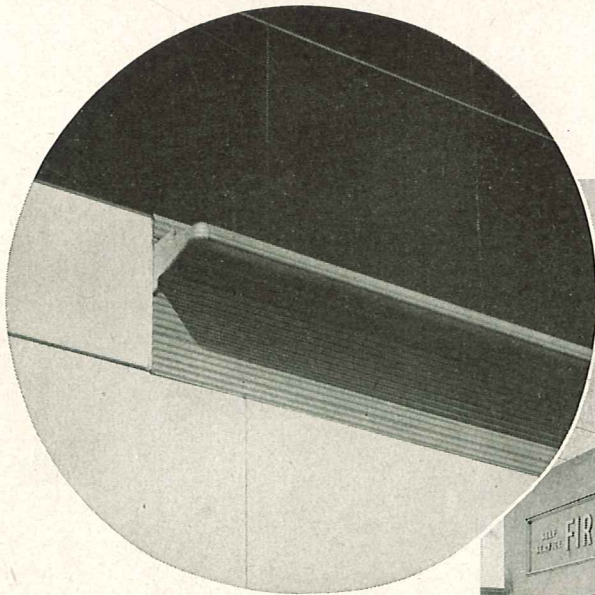




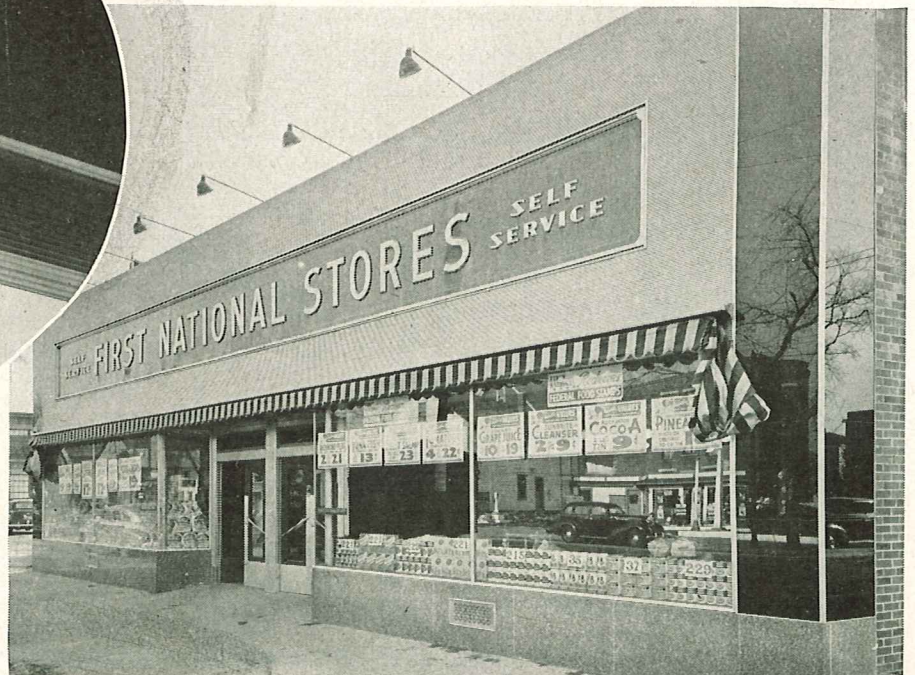
Right: Reeded bulkhead and spandrel sections made from a combination of no. 3, no. 8 and no. 12.



Left: Typical front showing no. 1011 awning hood cover, no. 3 and no. 30 structural glass hanger moulding.



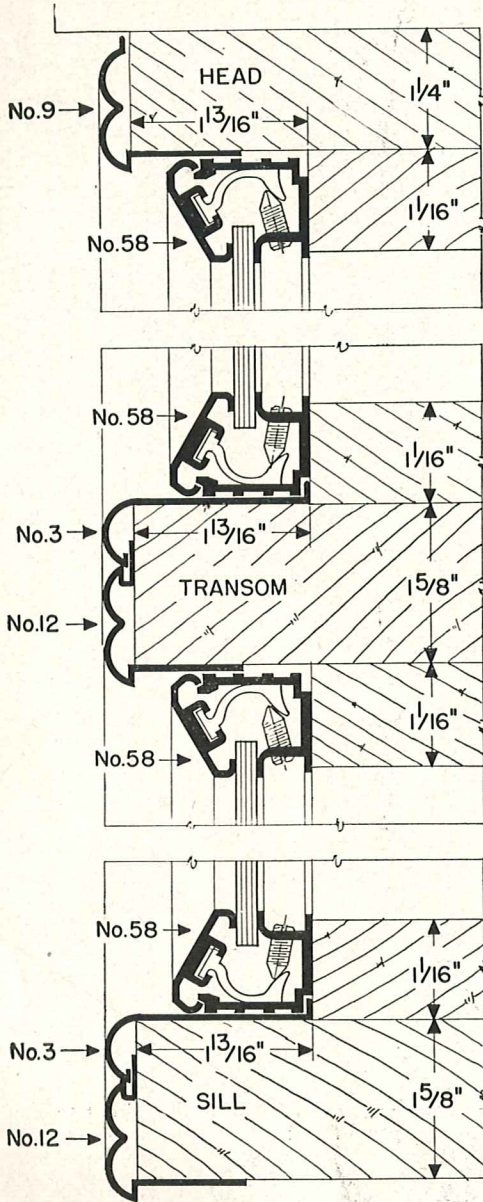
Below: The entire wall surface above glass front to the parapet except for the sign panel faced with no. 8 reeded moulding.



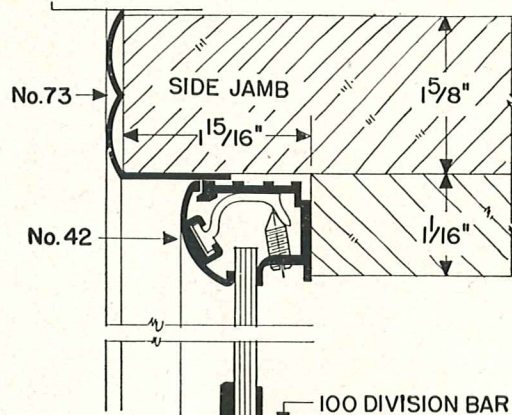
Above: Detail of no. 1011 awning hood and end cap with no. 8 continuous facia.



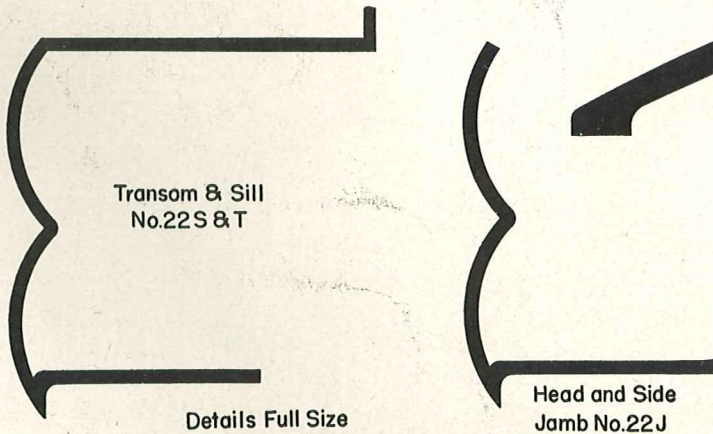
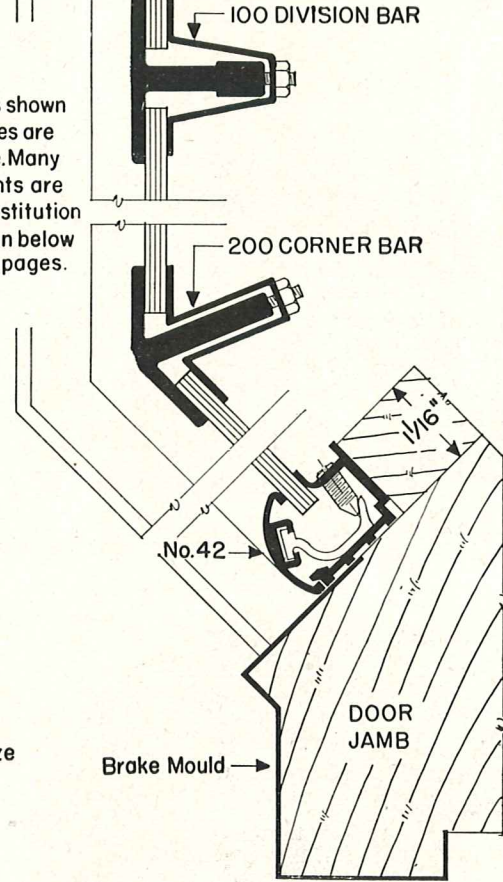
# TYPICAL GLASS SETTING CONSTRUCTION



Details 1/2 Full Size



**NOTE**  
The combinations shown on these two pages are merely suggestive. Many other arrangements are possible by the substitution of mouldings shown below or on succeeding pages.

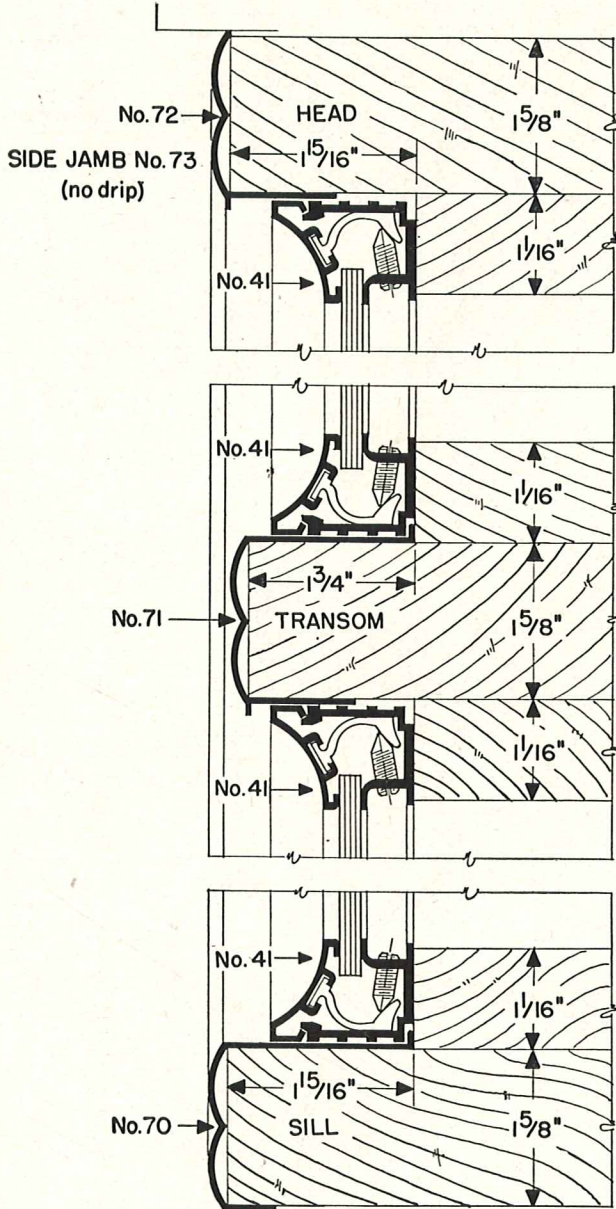


Details Full Size

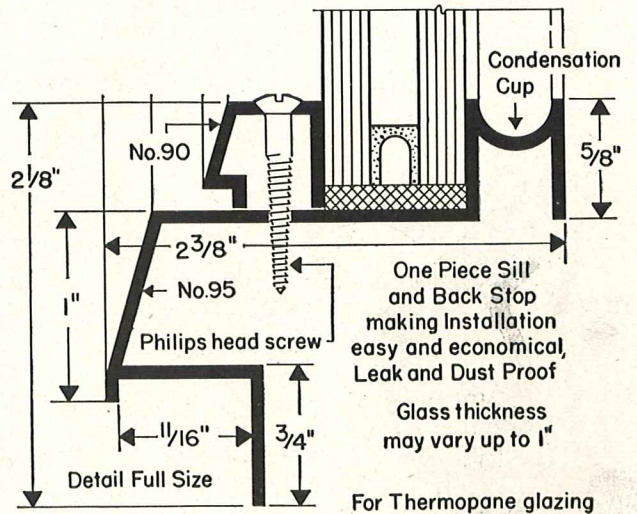
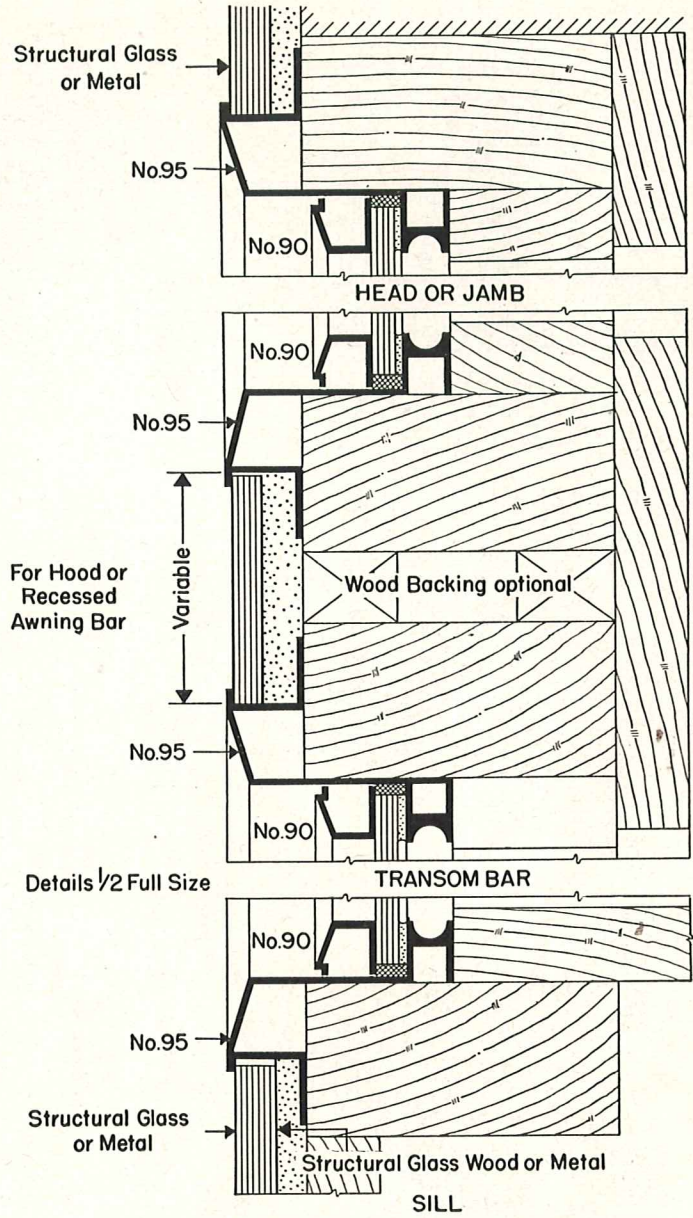
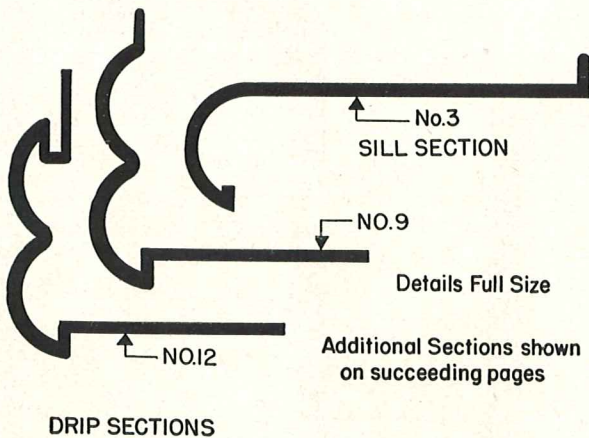
Details Full Size

SADDLE  
Widths vary from 4" to 7 1/2"





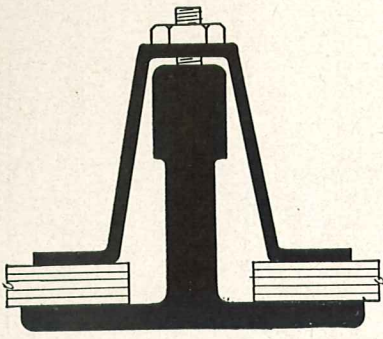
Details 1/2 Full Size



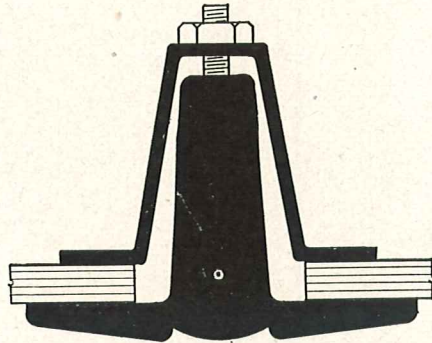


DIVISION AND CORNER BARS, VERTICAL AND HORIZONTAL MOULDINGS

STANDARD DIVISION BARS



DIVISION BAR 100



HEAVY DIVISION BAR 100A



No.22

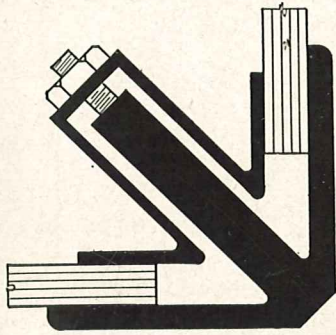


No.8



No.16

MOULDINGS FOR PILASTERS,  
COLUMNS AND ALL VERTICAL  
AND HORIZONTAL CONDITIONS



CORNER BAR 200

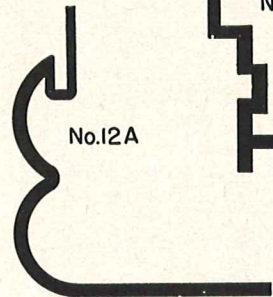


No.60B

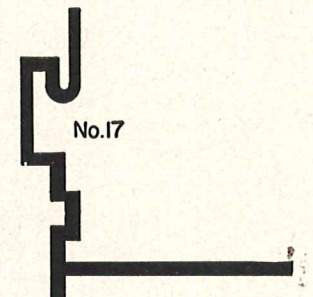


No.90

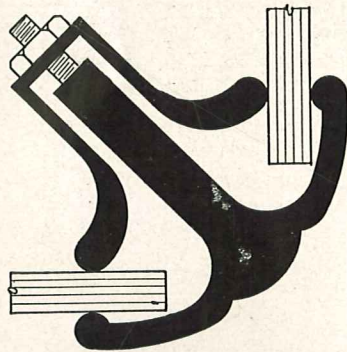
GLASS BEADS



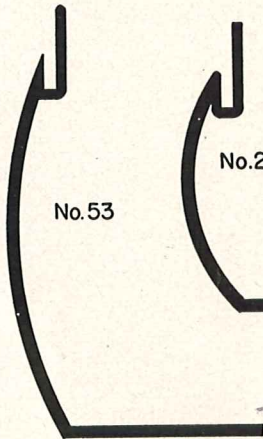
No.12A



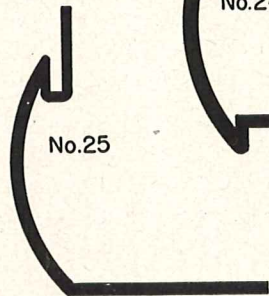
No.17



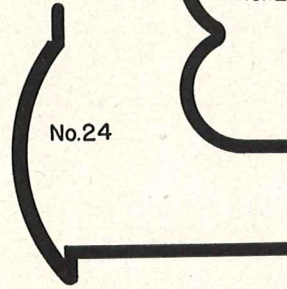
UNIVERSAL 700  
CORNER BAR



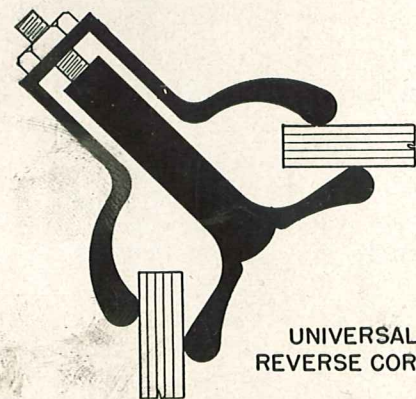
No.53



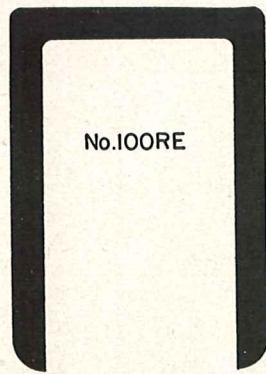
No.25



No.24

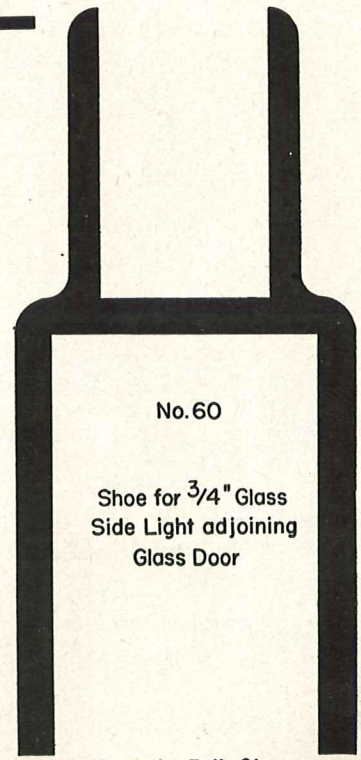


UNIVERSAL 750  
REVERSE CORNER BAR



No.100RE

BAR REINFORCING

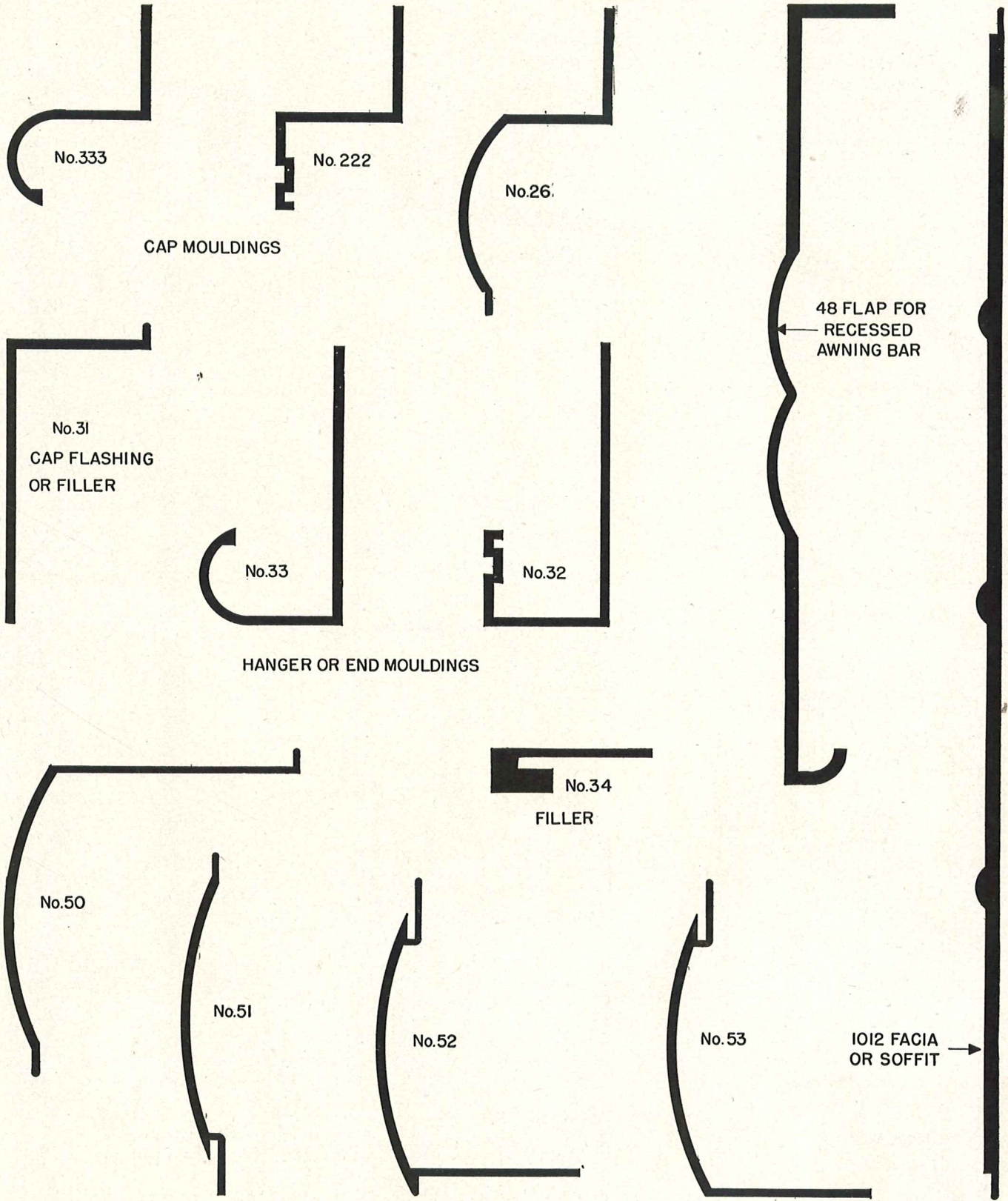


No.60

Shoe for 3/4" Glass  
Side Light adjoining  
Glass Door

Details Full Size





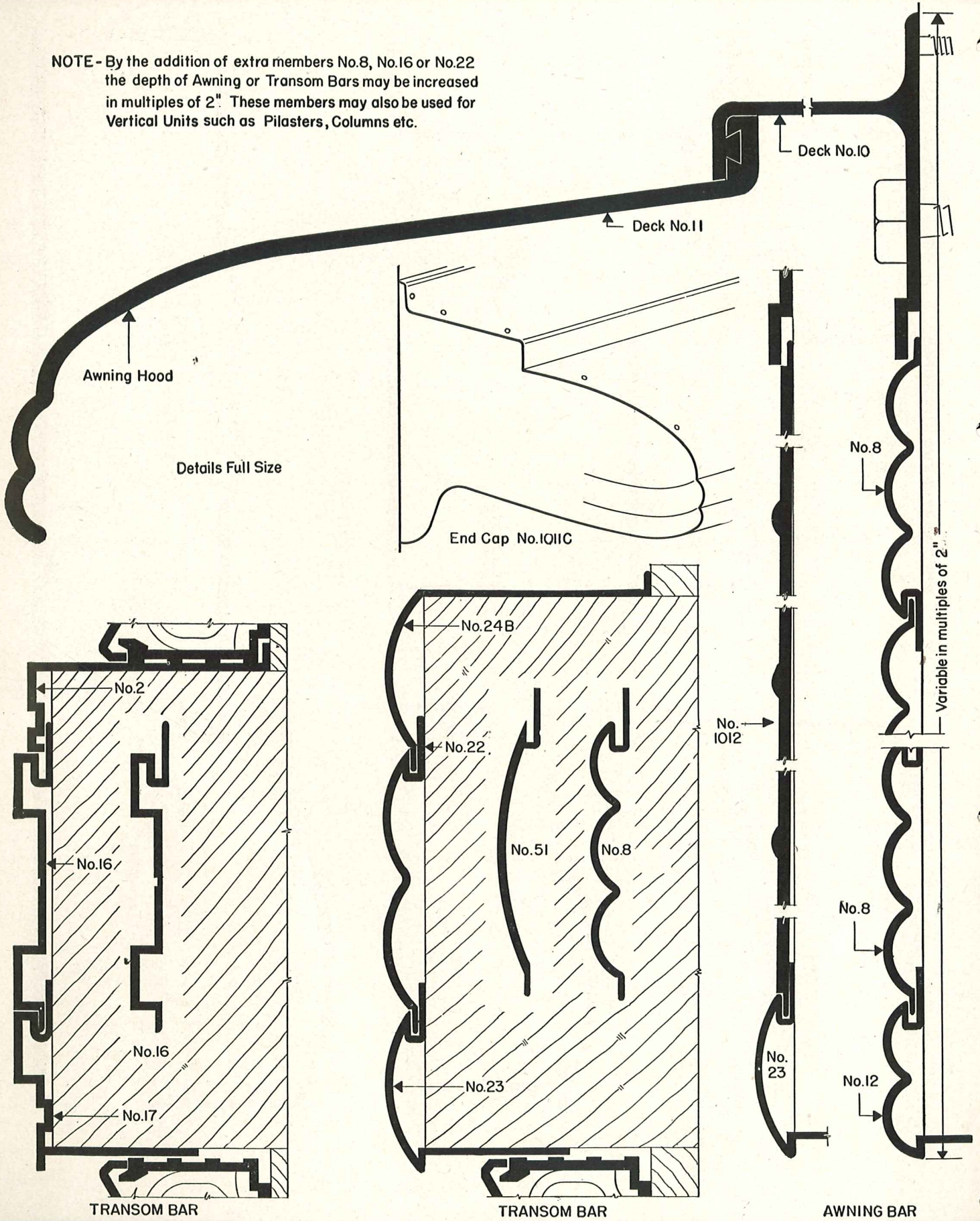
2" SINGLE REED MOULDINGS

Details Full Size

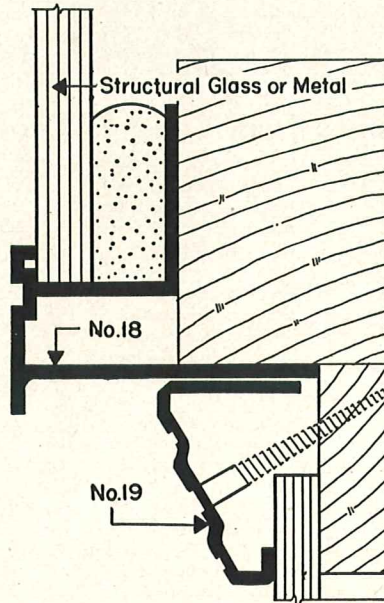
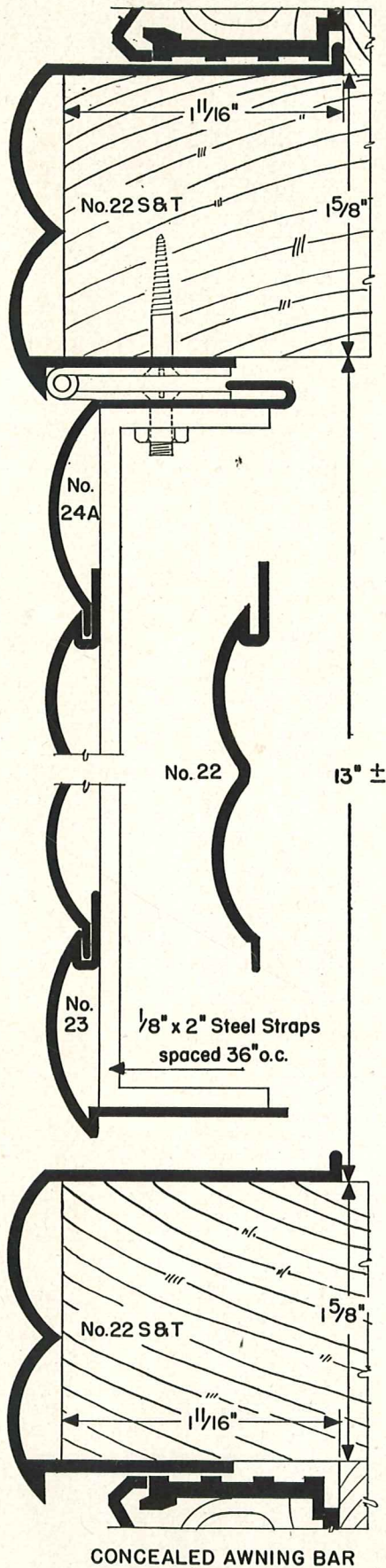


# TYPICAL NATCOR AWNING AND TRANSOM BARS

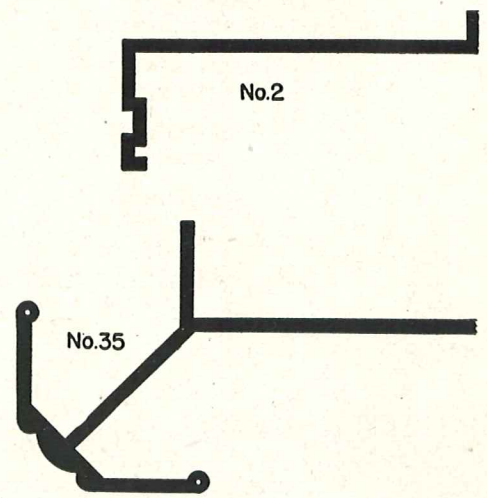
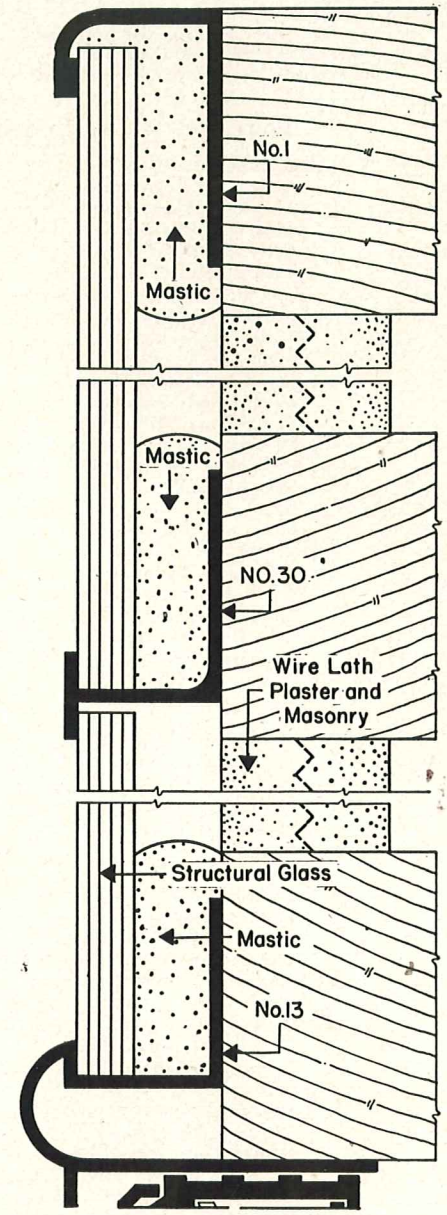
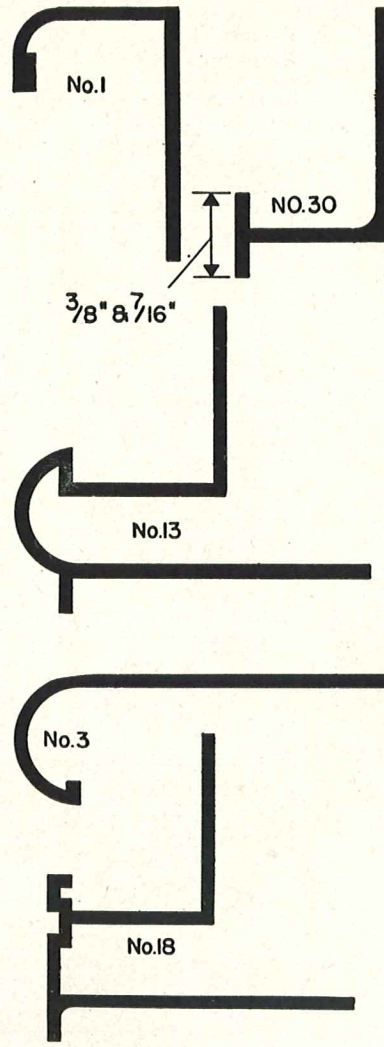
NOTE - By the addition of extra members No.8, No.16 or No.22 the depth of Awning or Transom Bars may be increased in multiples of 2". These members may also be used for Vertical Units such as Pilasters, Columns etc.







These mouldings are available in Alumilite, Red, Black and Bronze.



SECTIONS FOR USE WITH STRUCTURAL GLASS



# natcor distributors

## Located in Principal Cities from Coast to Coast

Albany, New York  
Alexandria, Louisiana  
Allentown, Pennsylvania  
Altoona, Pennsylvania  
Anderson, Indiana  
Asbury Park, New Jersey  
Atlantic City, New Jersey  
Augusta, Georgia  
Austin, Texas  
Baltimore, Maryland  
Barrington, Rhode Island  
Baton Rouge, Louisiana  
Battle Creek, Michigan  
Beaumont, Texas  
Bellingham, Washington  
Binghamton, New York  
Birmingham, Alabama  
Bloomington, Illinois  
Boston, Massachusetts  
Bridgeport, Connecticut  
Brighton, Massachusetts  
Brockton, Massachusetts  
Brooklyn, New York  
Burlington, Iowa  
Cadillac, Michigan  
Cambridge, Massachusetts  
Canton, Ohio  
Central Falls, Rhode Island  
Champaign, Illinois  
Charleston, South Carolina  
Chattanooga, Tennessee  
Chelsea, Massachusetts  
Chicago, Illinois  
Cincinnati, Ohio  
Clarksburg, West Virginia  
Cleveland, Ohio  
Columbia, South Carolina  
Columbus, Georgia  
Corona, L. I., New York  
Dallas, Texas  
Danville, Illinois  
Denver, Colorado  
Detroit, Michigan  
East Chicago, Indiana  
Eldorado, Illinois  
Elizabeth, New Jersey  
Elmhurst, L. I., New York  
Fall River, Massachusetts  
Floral Park, New York  
Fort Wayne, Indiana  
Fort Worth, Texas  
Freeport, Illinois  
Gadsden, Alabama  
Gainesville, Florida  
Galesburg, Illinois  
Gary, Indiana  
Greenville, South Carolina  
Hannibal, Missouri  
Hartford, Connecticut  
Hartford City, Indiana  
Hastings, Nebraska  
Hicksville, L. I., New York  
Hoboken, New Jersey  
Holyoke, Massachusetts  
Hot Springs, Arkansas  
Houston, Texas  
Hyannis, Massachusetts  
Indianapolis, Indiana  
Jackson, Michigan  
Jackson, Mississippi  
Jacksonville, Florida  
Jacksonville, Illinois  
Jersey City, New Jersey  
Kankakee, Illinois  
Kansas City, Missouri  
Kenosha, Wisconsin  
Kingston, New York  
Knoxville, Tennessee  
Kokomo, Indiana  
Lake Charles, Louisiana  
Lakeland, Florida  
Lansing, Michigan  
Lawrence, Massachusetts  
Lewiston, Maine  
Lexington, Kentucky  
Little Rock, Arkansas  
Los Angeles, California  
Louisville, Kentucky  
Lynn, Massachusetts  
Macon, Georgia  
Manchester, New Hampshire  
Memphis, Tennessee  
Meridian, Mississippi  
Miami, Florida  
Michigan City, Indiana  
Minneapolis, Minnesota  
Mobile, Alabama  
Monroe, Louisiana  
Mt. Vernon, New York  
Muskegon, Michigan  
Muskegon Heights, Michigan  
Nashville, Tennessee  
New Albany, Indiana  
Newark, New Jersey  
New Bedford, Massachusetts  
New Brunswick, New Jersey  
Newburgh, New York  
Newport, Rhode Island  
New York, New York  
New Orleans, Louisiana  
Norwich, Connecticut  
Oklahoma City, Oklahoma  
Omaha, Nebraska  
Orange, Texas  
Ottawa, Illinois  
Ottumwa, Iowa  
Paris, Illinois  
Passaic, New Jersey  
Patterson, New Jersey  
Pawtucket, Rhode Island  
Peoria, Illinois  
Perth Amboy, New York  
Pensacola, Florida  
Philadelphia, Pennsylvania  
Pine Bluff, Arkansas  
Pittsburgh, Pennsylvania  
Plymouth, Pennsylvania  
Port Arthur, Texas  
Port Richmond, New York  
Poughkeepsie, New York  
Providence, Rhode Island  
Quincy, Illinois  
Quincy, Massachusetts  
Racine, Wisconsin  
Raleigh, North Carolina  
Richmond, Indiana  
Richmond, Virginia  
Richmond Hill, L. I., New York  
Rockford, Illinois  
Rock Island, Illinois  
Roxbury, Massachusetts  
Royal Oak, Michigan  
Saginaw, Michigan  
St. Joseph, Missouri  
St. Louis, Missouri  
St. Petersburg, Florida  
Salt Lake City, Utah  
San Angelo, Texas  
San Antonio, Texas  
Savannah, Georgia  
Schenectady, New York  
Scranton, Pennsylvania  
Sheboygan, Wisconsin  
Shreveport, Louisiana  
South Bend, Indiana  
South Boston, Massachusetts  
Spokane, Washington  
Springfield, Illinois  
Springfield, Massachusetts  
Streator, Illinois  
Syracuse, New York  
Tacoma, Washington  
Tallahassee, Florida  
Tampa, Florida  
Taunton, Massachusetts  
Terre Haute, Indiana  
Texarkana, Texas  
Trenton, New Jersey  
Troy, New York  
Tulsa, Oklahoma  
Utica, New York  
Valdosta, Georgia  
Vicksburg, Mississippi  
Washington, D. C.  
Wausau, Wisconsin  
West New York, New Jersey  
Westerly, Rhode Island  
West Palm Beach, Florida  
Wheeling, West Virginia  
White Plains, New York  
Wilkes-Barre, Pennsylvania  
Woonsocket, Rhode Island  
Worcester, Massachusetts

## Represented in Foreign Cities

Bombay, India  
Heliotropo, Mexico  
Johannesburg, South Africa  
Juneau, Alaska  
Manila, Philippine Islands  
Montreal, Canada  
Quebec, Canada  
Regina, Saskatchewan, Canada  
Toronto, Canada

**NATCOR — Providence 9, Rhode Island**