

Natcor

EXTRUDED METAL



Store Fronts

NATCOR—Providence 9, R. I.

1949

NATCOR EXTRUDED GLASS SETTINGS



NATCOR SECTIONS

Beautifully designed Extruded Alumilited Aluminum Sections are built for years of service, in fluted and square interlocking mouldings which are interchangeable. They assure clearly defined lines and smooth surfaces that can be obtained only in Extruded Metal.

ACCEPTANCE

Natcor Extruded Alumilited Aluminum Metal Store Fronts have won the acclaim and endorsement of Architects throughout the country.

ECONOMICAL

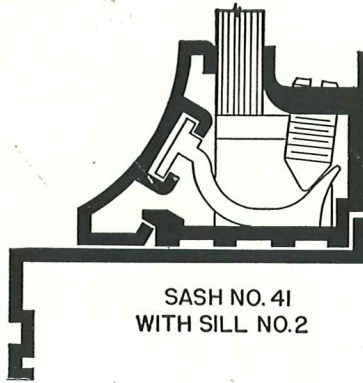
Store Fronts can be completed with a combination of just a few sections due to the interlocking feature, and are easily installed with minimum labor costs.

HOW FURNISHED

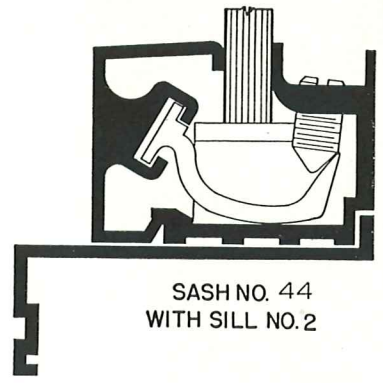
All glass settings and accessory mouldings are made only in Extruded Aluminum in full 21' stock lengths and shipped to the glass trade throughout the U.S.A., Canada, Mexico and other foreign countries from our new and exclusive plant located in Providence, R. I.

PRICE

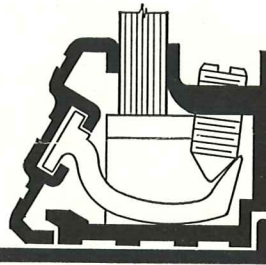
Natcor Extruded Alumilited Aluminum Store Front Mouldings are of the highest quality and priced to meet competition of other glass settings of a like quality.



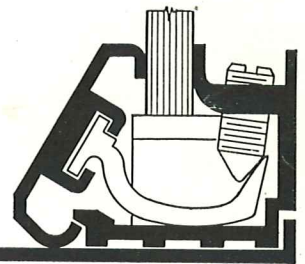
SASH NO. 41
WITH SILL NO. 2



SASH NO. 44
WITH SILL NO. 2



SASH NO. 57
WITH SILL NO. 74



SASH NO. 58
WITH SILL NO. 2



WIDE FACE SASH NO. 180
WITH SILL NO. 3



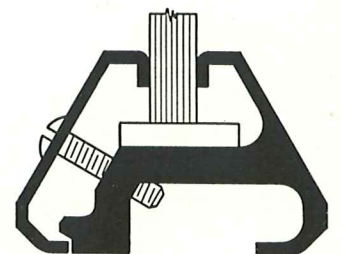
SASH NO. 58A



SASH NO. 190
WITH SILL NO. 2



SASH NO. 19



DOUBLE FACE SASH NO. 59

Details Full Size



NATCOR STORE FRONTS

Extruded Aluminum

"ACCLAIMED THE STORE FRONT OF TO-DAY"

PROVIDENCE 9, RHODE ISLAND, U.S.A.

February 22, 1949

Cooperative Housing Associates
57-A Wavecrest Ave.
Winfield Park (Linden)
New Jersey

Attention: Mr. Paul Buhl

Gentlemen:

As per your request on your post card of February 21, 1949 we are pleased to enclose herewith a copy of our 1949 catalog and we are this day sending you under separate cover a set of our 1949 Half Size Details.

The NATCOR line is today acclaimed the outstanding Store Front Construction and is being used daily on some of the most impressive and imposing structures throughout the country. We are certain that you will be completely satisfied on any work where you may specify the NATCOR line.

NATCOR is sold through leading glass dealers in practically every principal city of the United States.

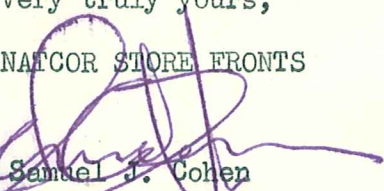
For your consideration we take the liberty of pointing out that some of the features of NATCOR Fully Extruded Alumilited Aluminum Sections for Store Fronts are: comparability in price with the thinner gauge rolled metals; greater durability than rolled metals because NATCOR products are heavier in gauge; beauty of design; ease and economy of installation because of interlocking and interchangeable combinations; beauty of anodized finish.

A copy of this letter is being sent to our sales representative, Mr. Walter R. Bopp of 140 78th Street, North Bergen, New Jersey for whatever additional assistance he may be able to render you.

Thank you very much for your interest in NATCOR.

Very truly yours,

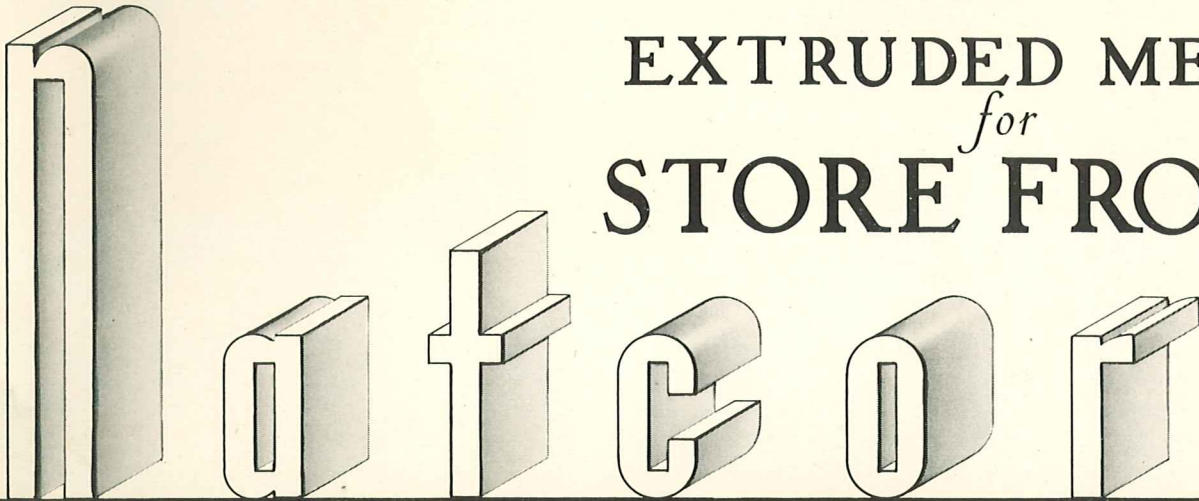
NATCOR STORE FRONTS


Samuel J. Cohen
Sales Promotion Manager

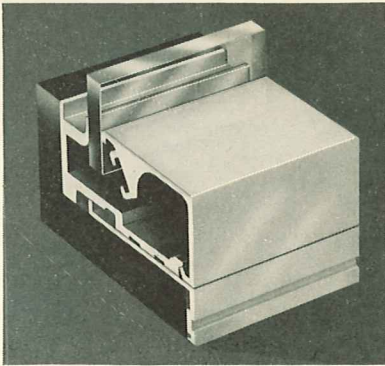
SJC:NMS
cc. Mr. Walter R. Bopp



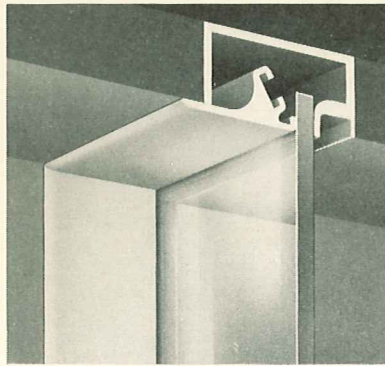
EXTRUDED METAL *for* STORE FRONTS



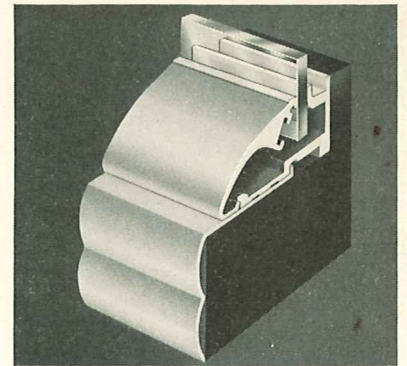
NATCOR ALUMINUM TRIM CREATES OUTSTANDING RESULTS



SASH No. 190 • With Sill Section No. 2



FLUSH SASH No. 192



SASH No. 180 • With Sill Section No. 74

ABREAST WITH THE MODERN TREND, the NATCOR line of Fully Extruded Alumilited Aluminum Store Front Construction has won the acclaim of the architect, the builder, the glass distributor and the store owner.

Built for years of service, NATCOR is beautifully designed and styled in square and fluted sections. Due to the interlocking and interchangeable features of NATCOR mouldings, the architect and builder have a wide choice and complete flexibility in combining various NATCOR parts to secure various combinations and designs. Further, by combining just a few interlocking NATCOR members the store front is complete, resulting in ease and economy of installation.

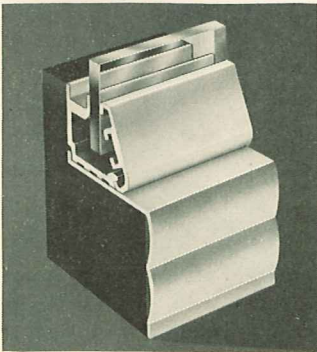
With a rich, smooth finish, easy to maintain, NATCOR extruded, rugged and durable Store Front Metal assures the very best in quality.

NATCOR glass settings have the following features: they will support varying thick-

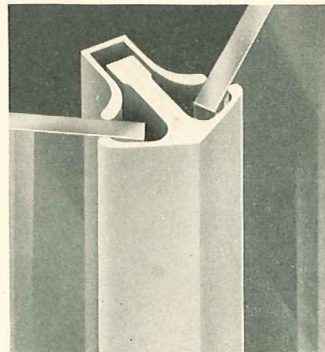
nesses of glass; are easy to miter; wide trough permits drainage of excessive moisture from glass; invisible indirect screw pressure; screw can not possibly touch glass. Wide solid aluminum adjustable setting blocks, with supporting leather cushion, permit quick setting of the glass, and are secure and dependable. Both inside and outside sections of sash are fully extruded.

NATCOR is of the highest quality and beautifully designed with symmetrical lines . . . smart . . . modern . . . "Attracting the Eye of the Passer-by" and thus helping to increase sales for the store owner.

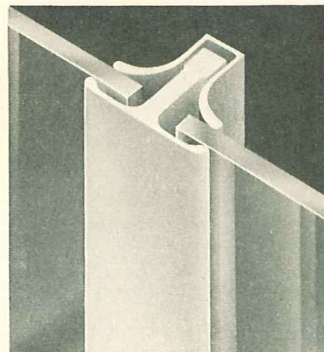
The new NATCOR Corner Bar Series combine beauty, strength, utility and economy. With the NATCOR series of four corner bars you can obtain angles varying from 88 to 180 degrees. These corner bars are rugged and can be used with our Bar Reinforcements, depending on job conditions.



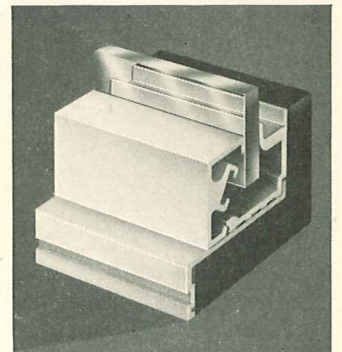
SASH No. 58 • With Sill Section No. 80



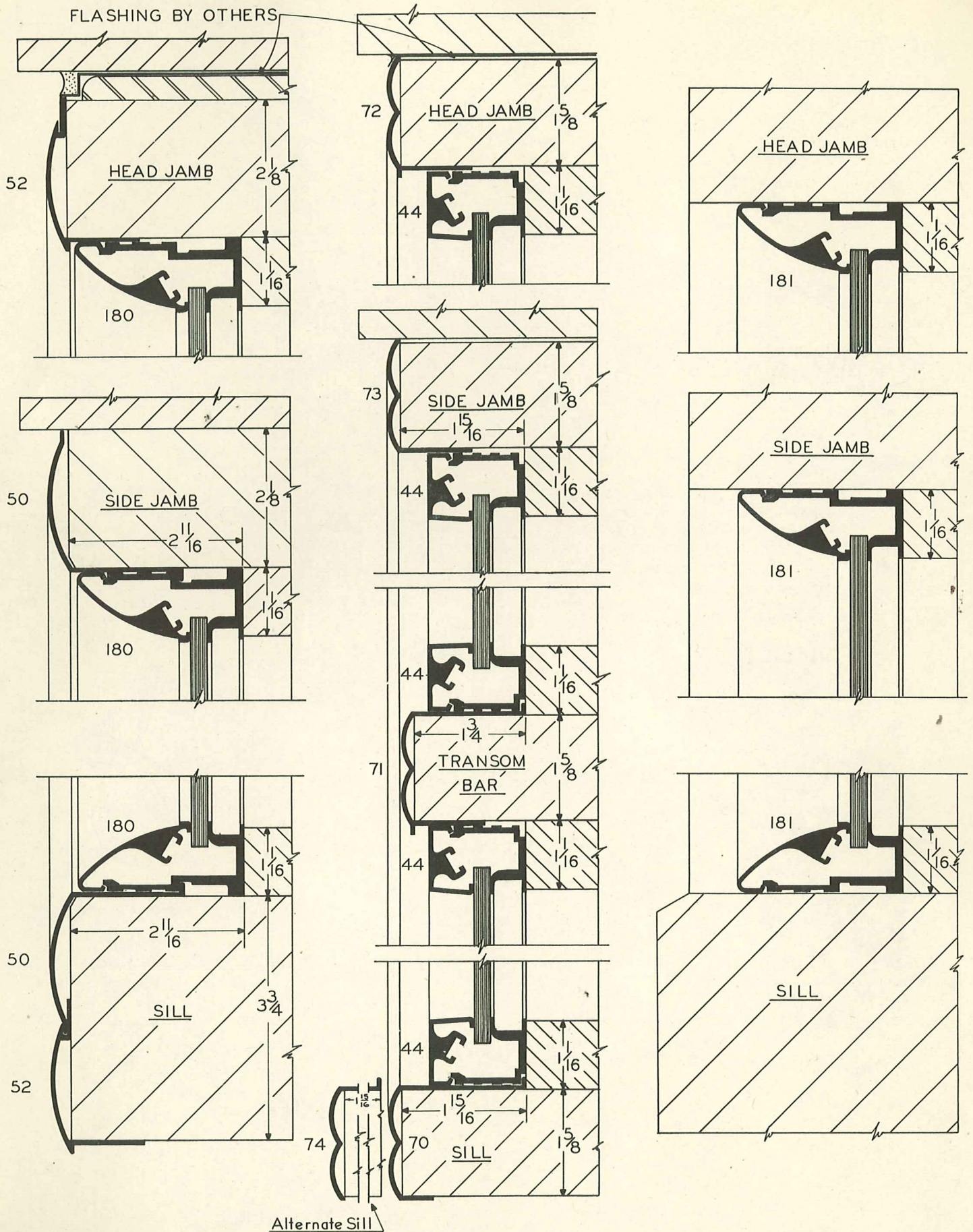
CORNER BAR No. 710



DIVISION AND CORNER BAR No. 740



SASH No. 41 • With Sill Section No. 2

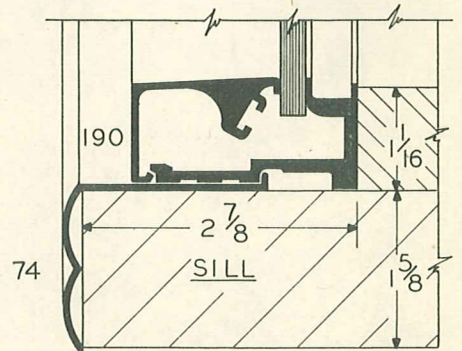
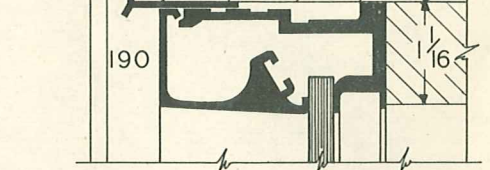
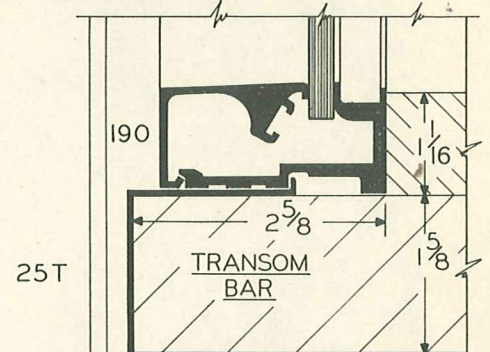
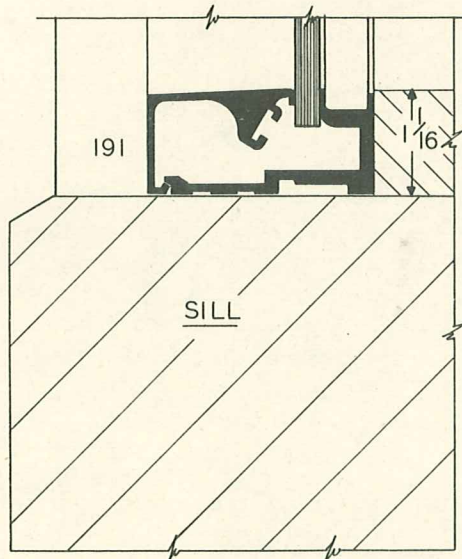
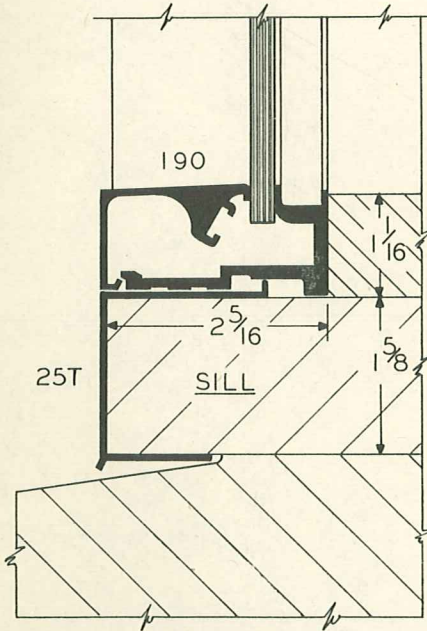
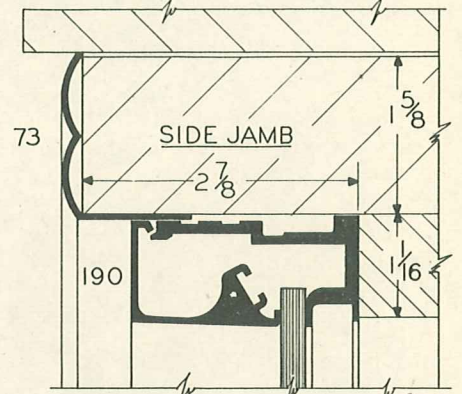
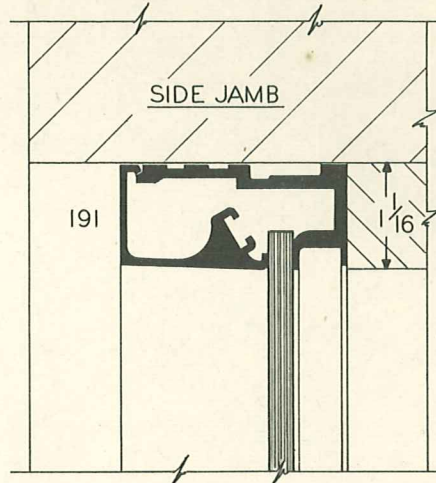
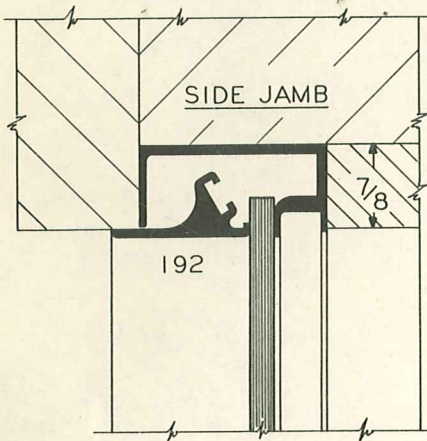
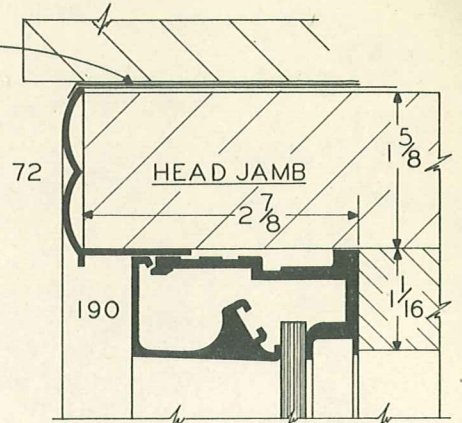
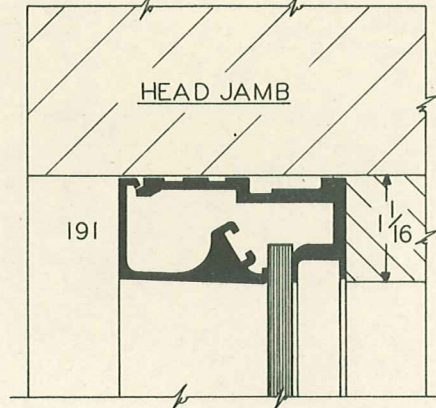
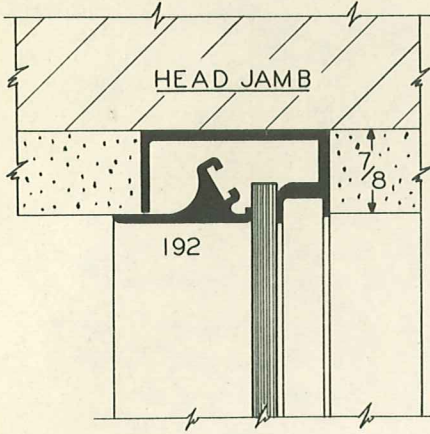


HALF SIZE DETAILS

NATCOR STORE FRONTS

PLATE
I
1949

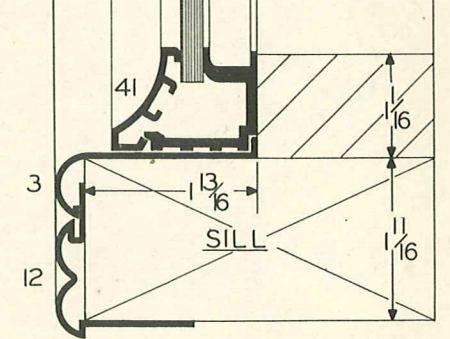
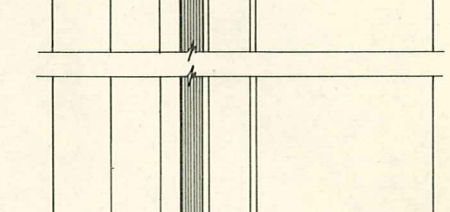
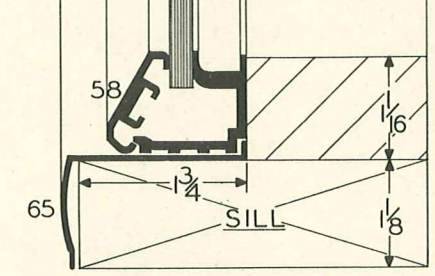
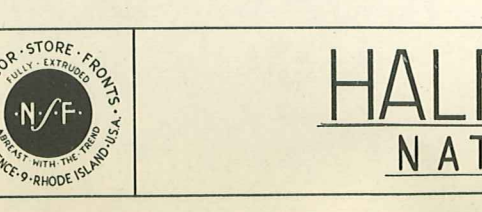
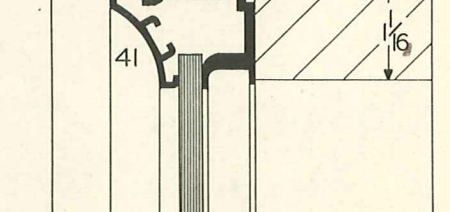
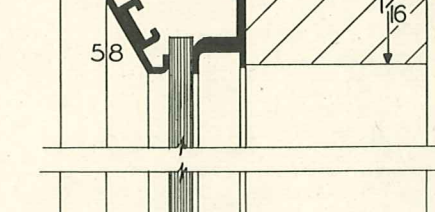
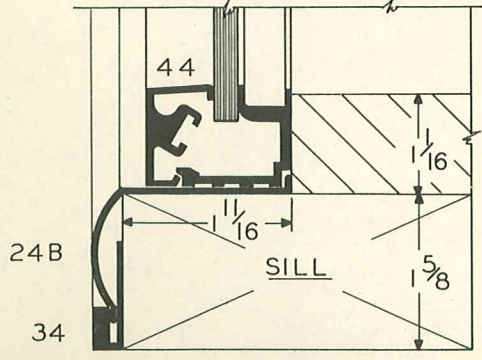
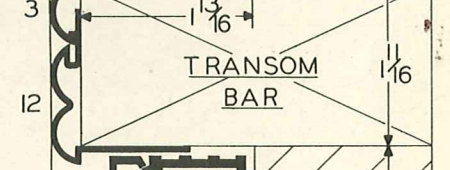
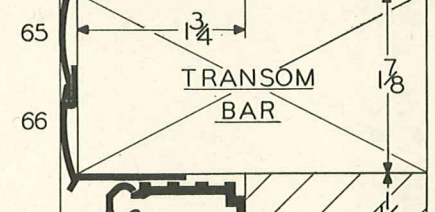
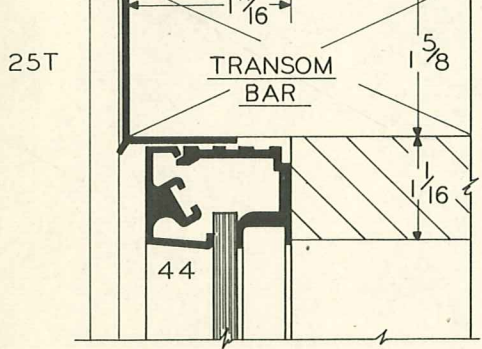
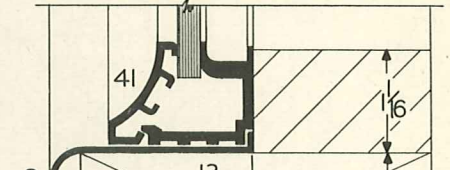
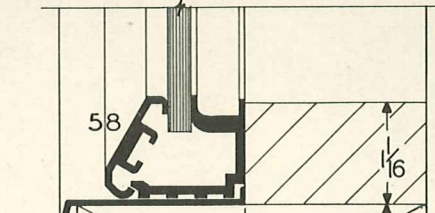
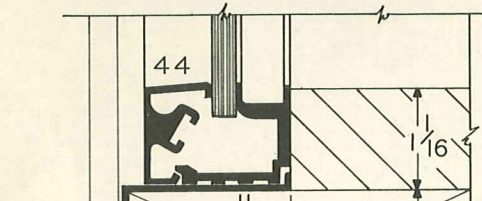
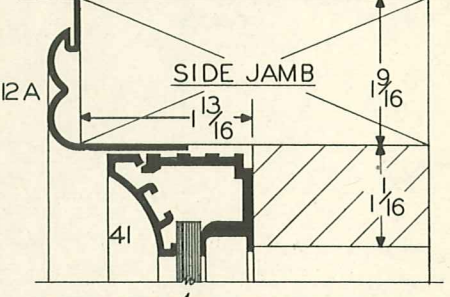
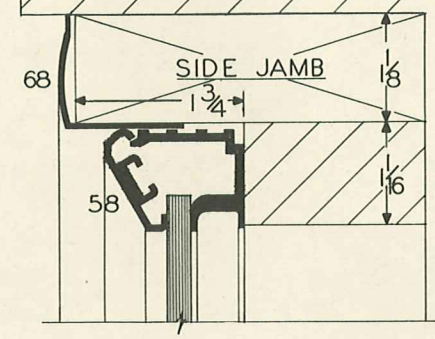
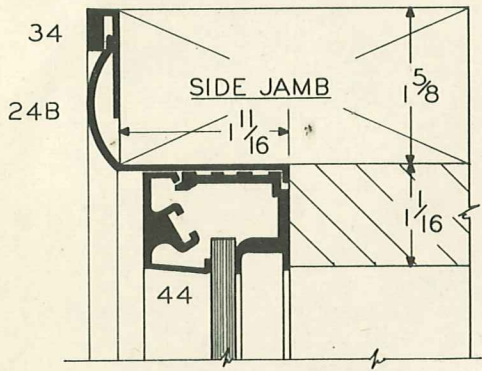
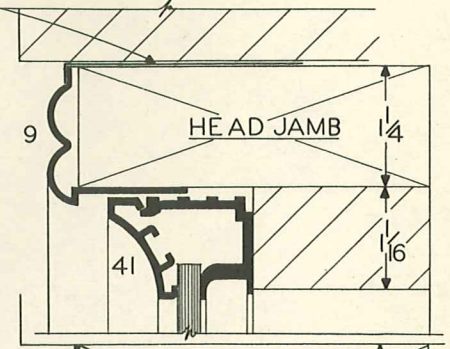
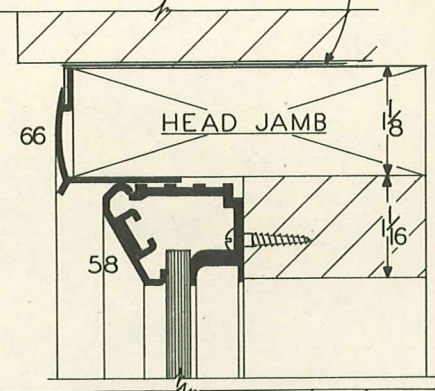
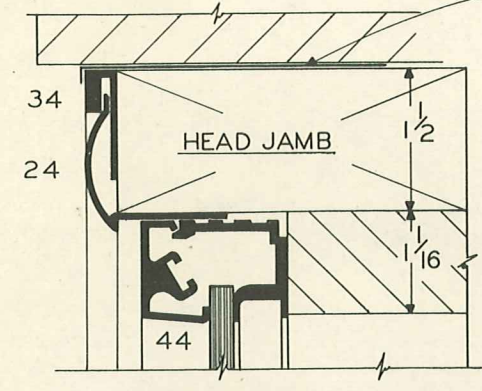
FLASHING BY OTHERS



HALF SIZE DETAILS

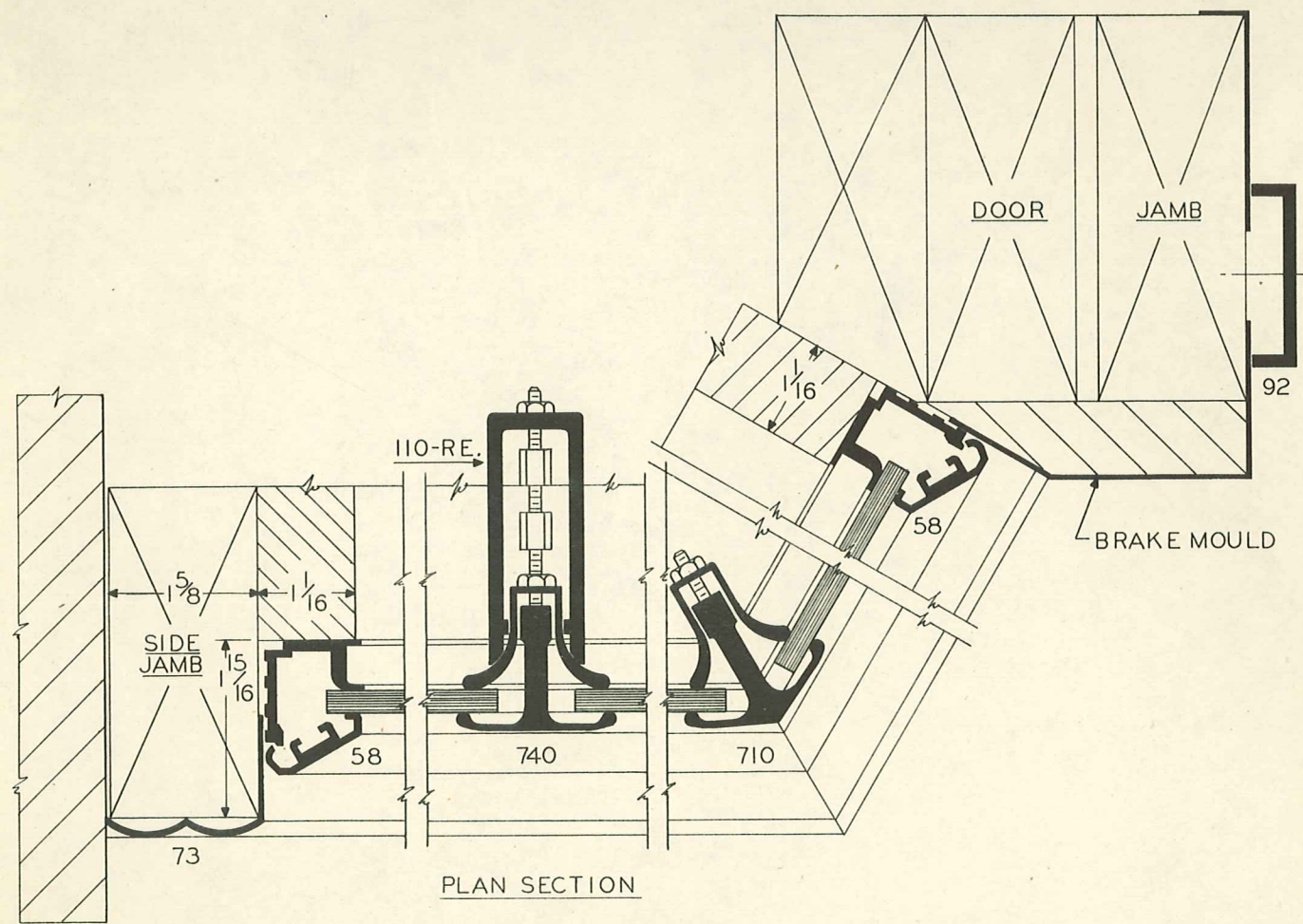
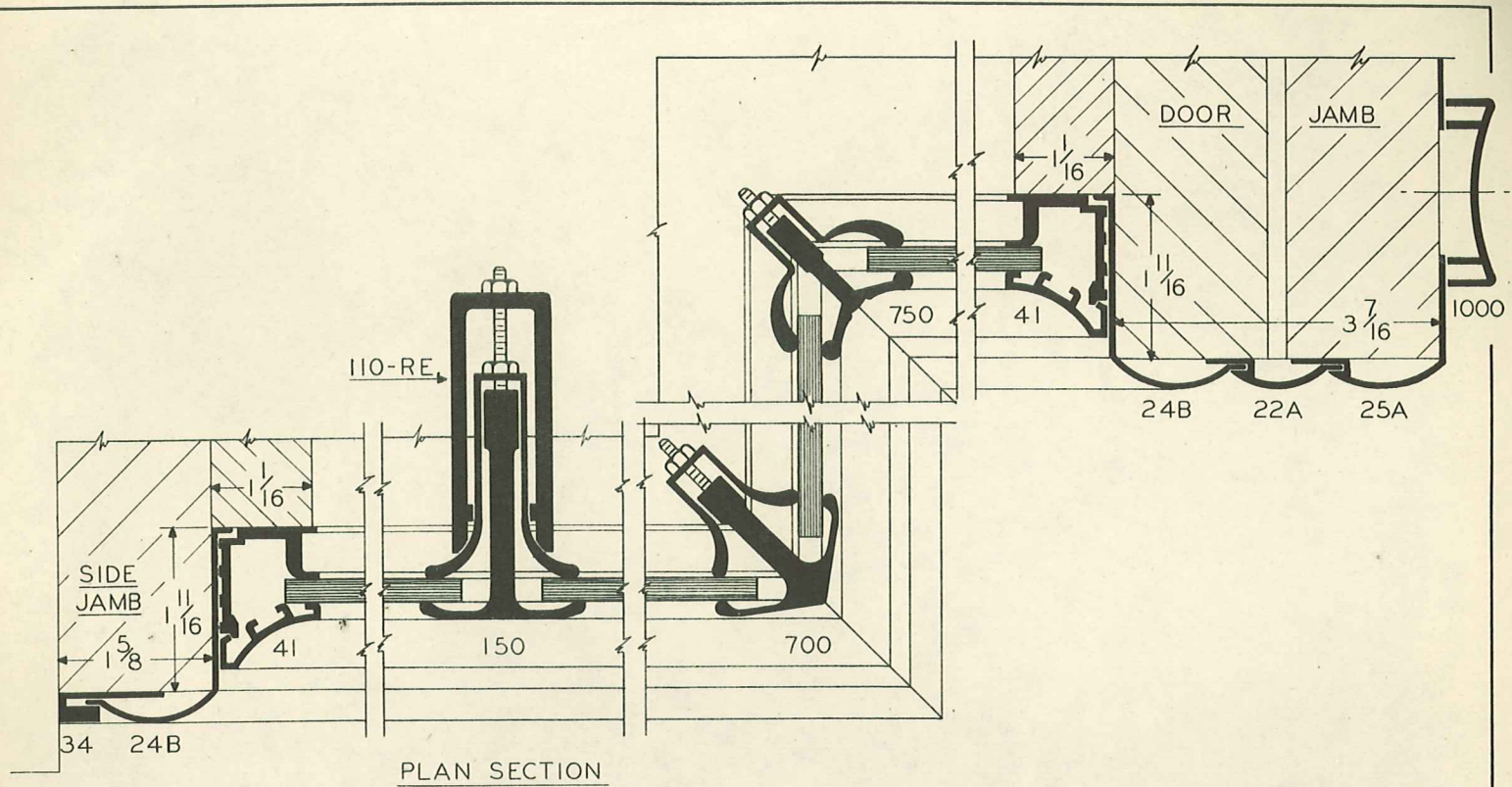
NATCOR STORE FRONTS

FLASHING BY OTHERS



HALF SIZE DETAILS

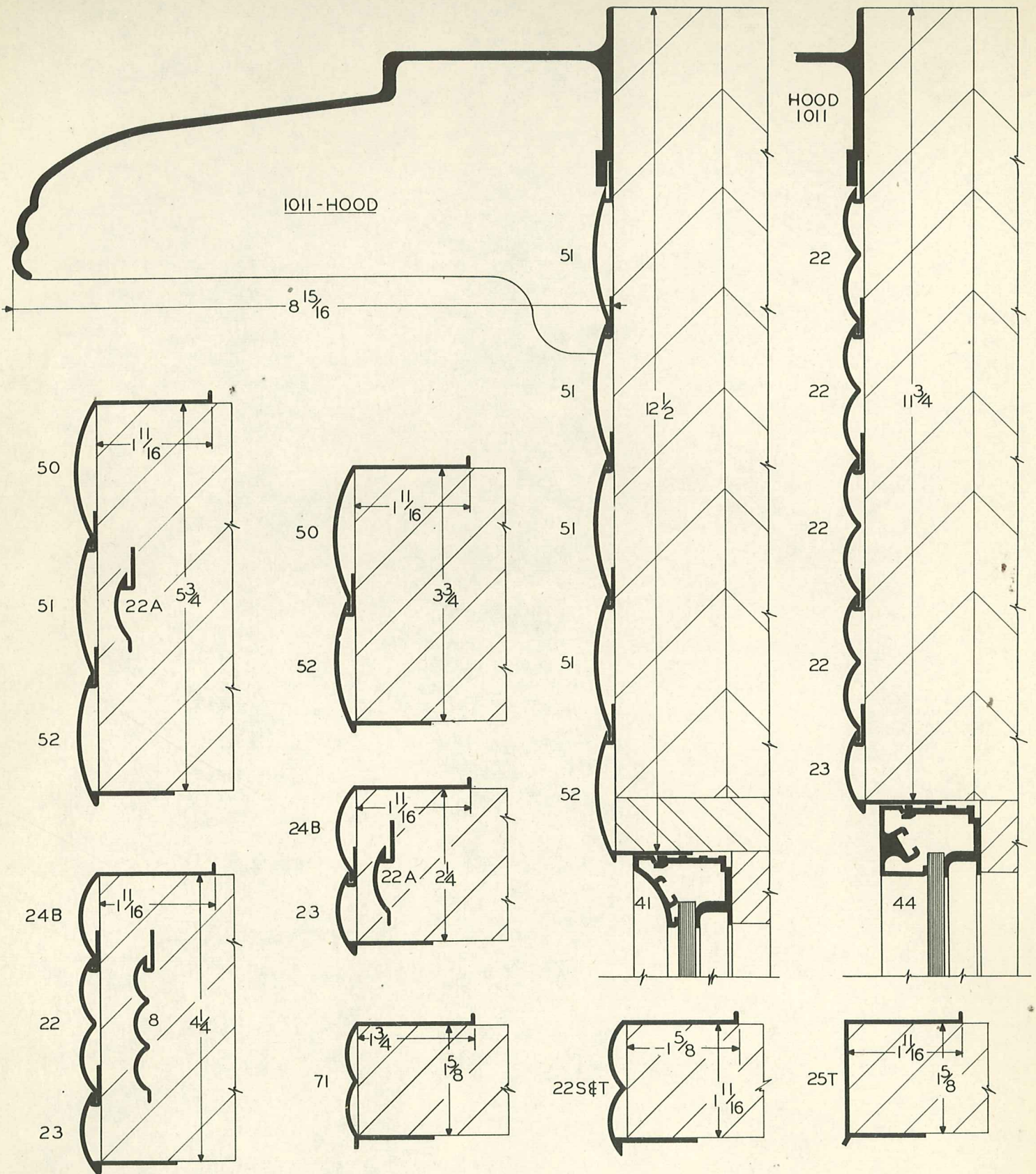
NATCOR STORE FRONTS



HALF SIZE DETAILS

NATCOR STORE FRONTS

PLATE
4
1949



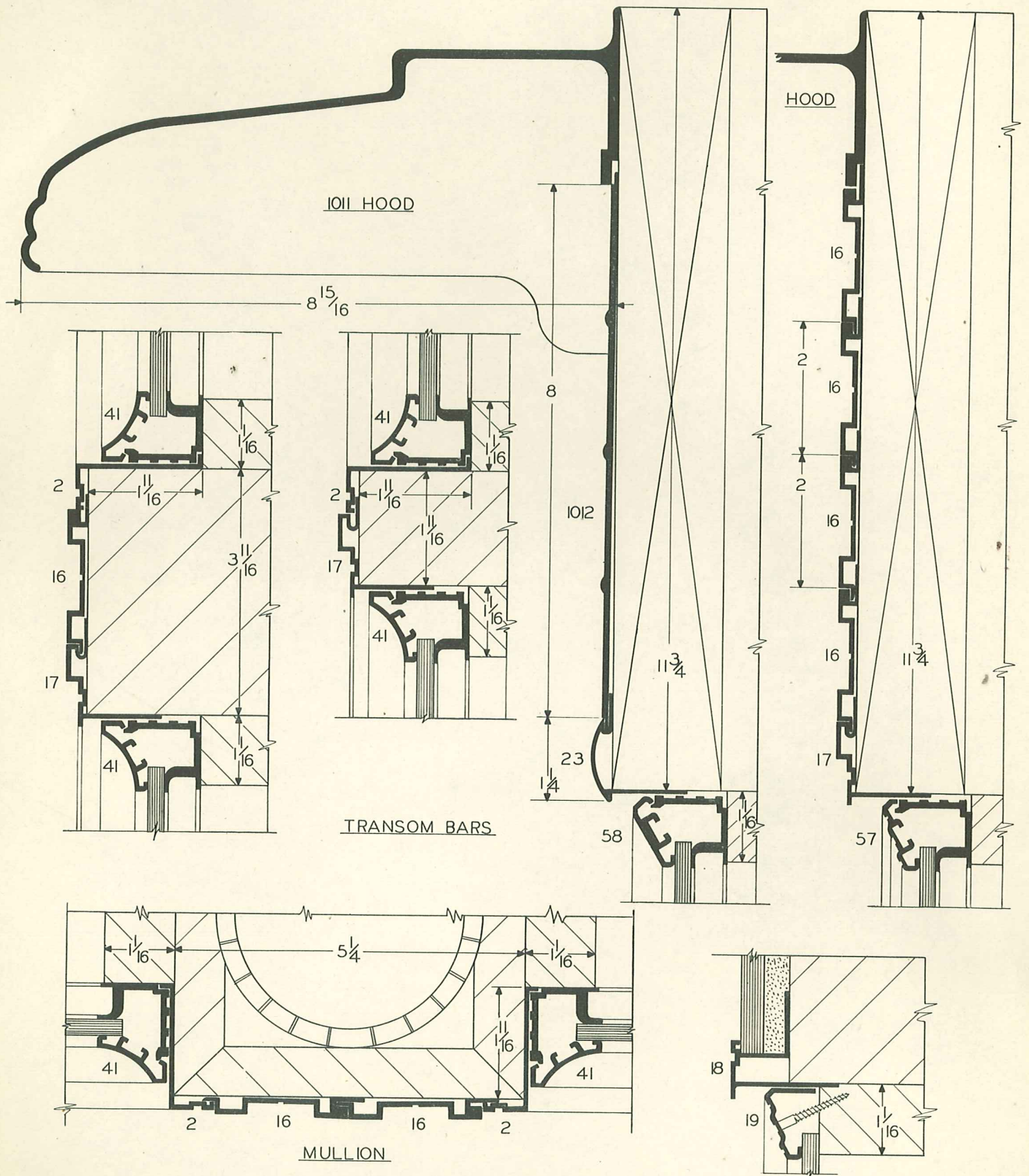
- T R A N S O M - B A R S -

HALF SIZE DETAILS

NATCOR STORE FRONTS

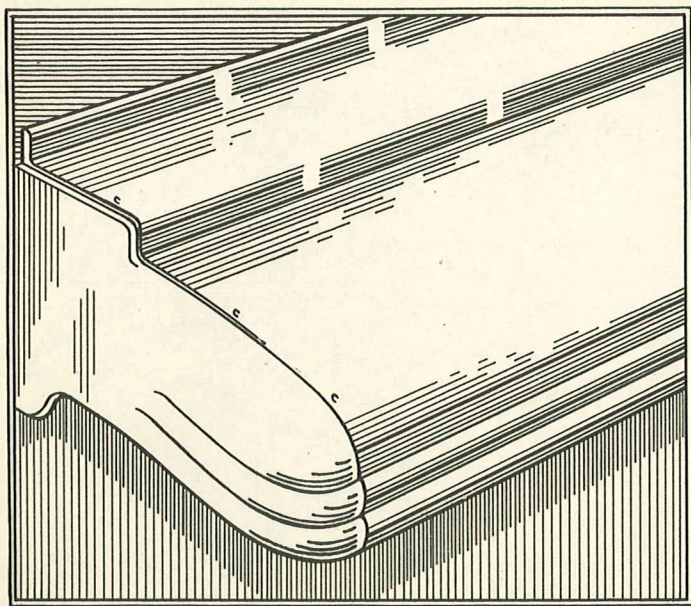
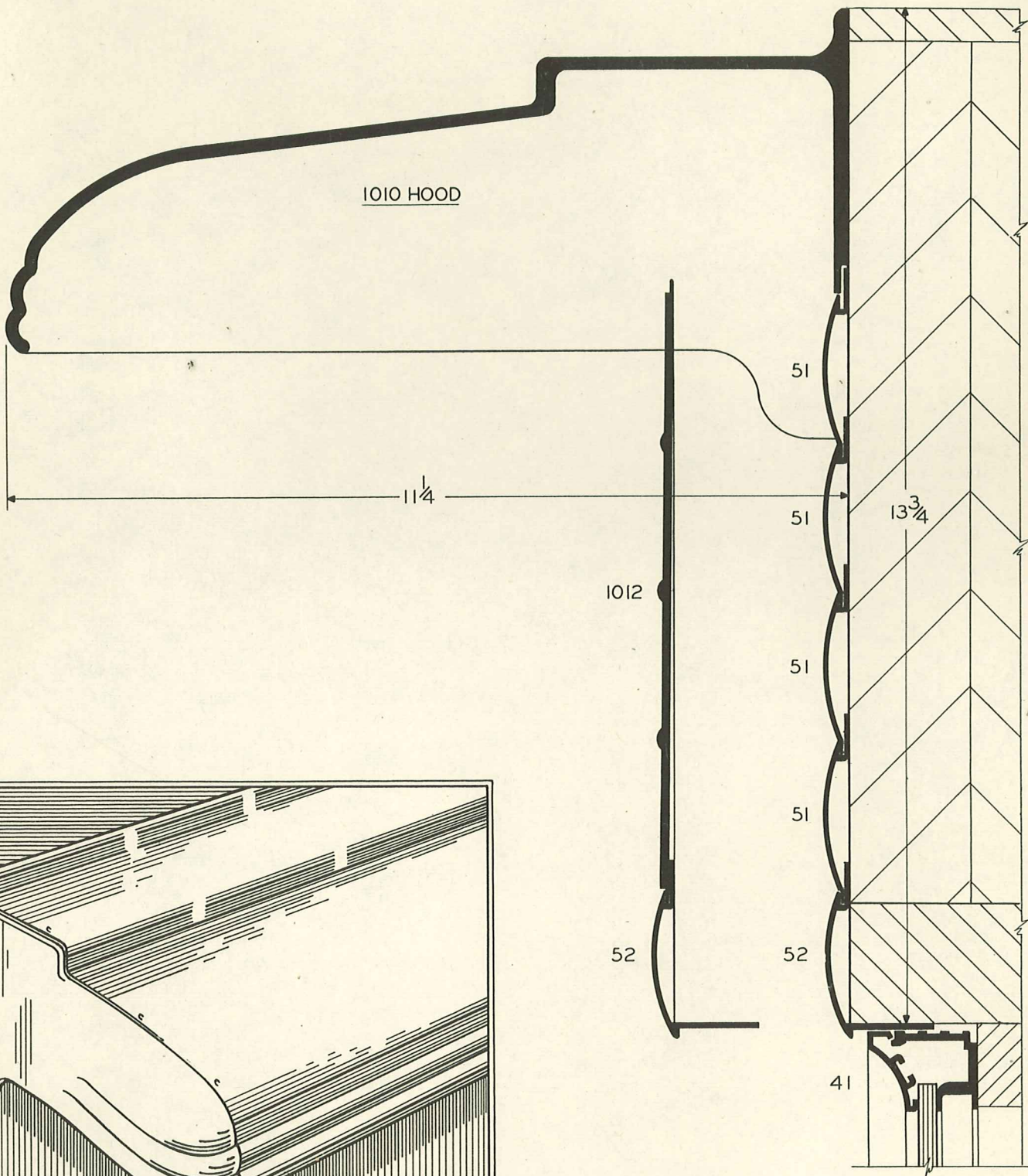
PLATE
5
1949





HALF SIZE DETAILS

NATCOR STORE FRONTS



PERSPECTIVE-NO. 1010C & NO. 1010IC CAST END CAPS.

HALF SIZE DETAILS

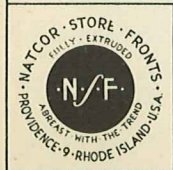
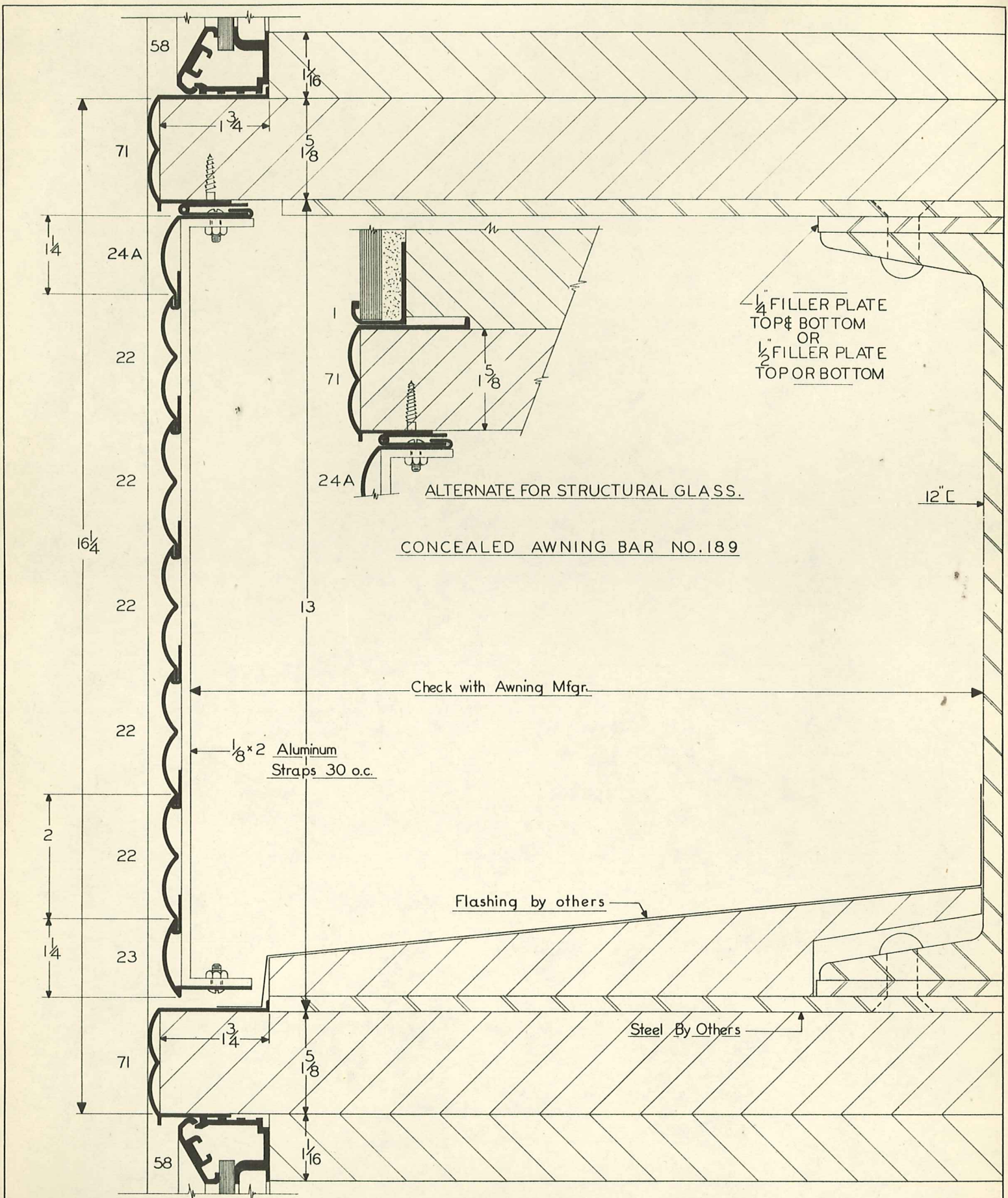
NATCOR STORE FRONTS

PLATE

7

1949

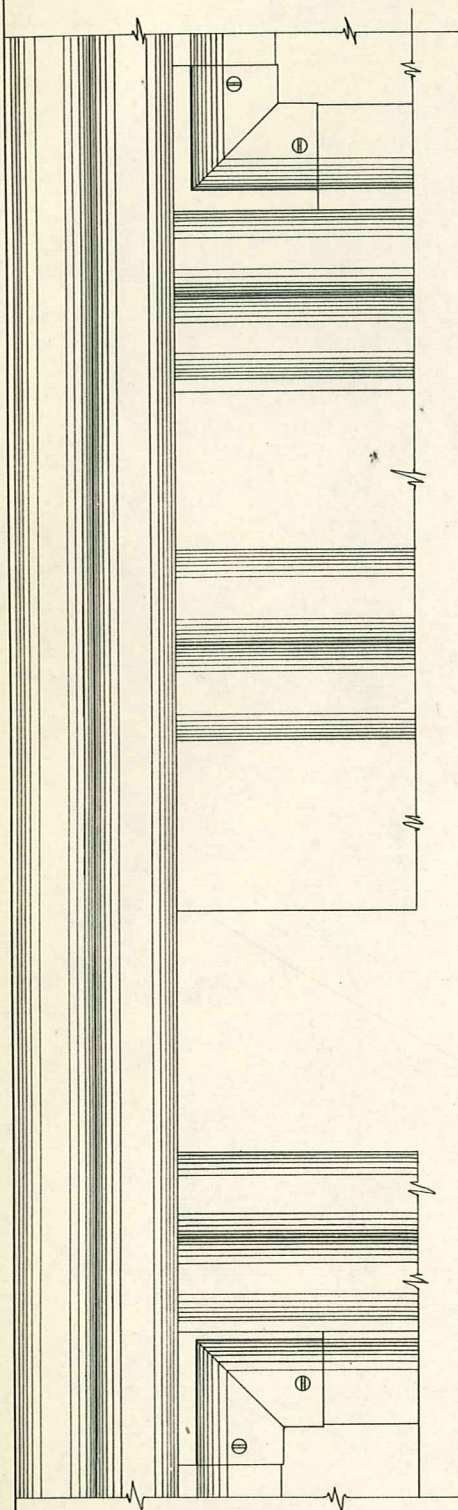




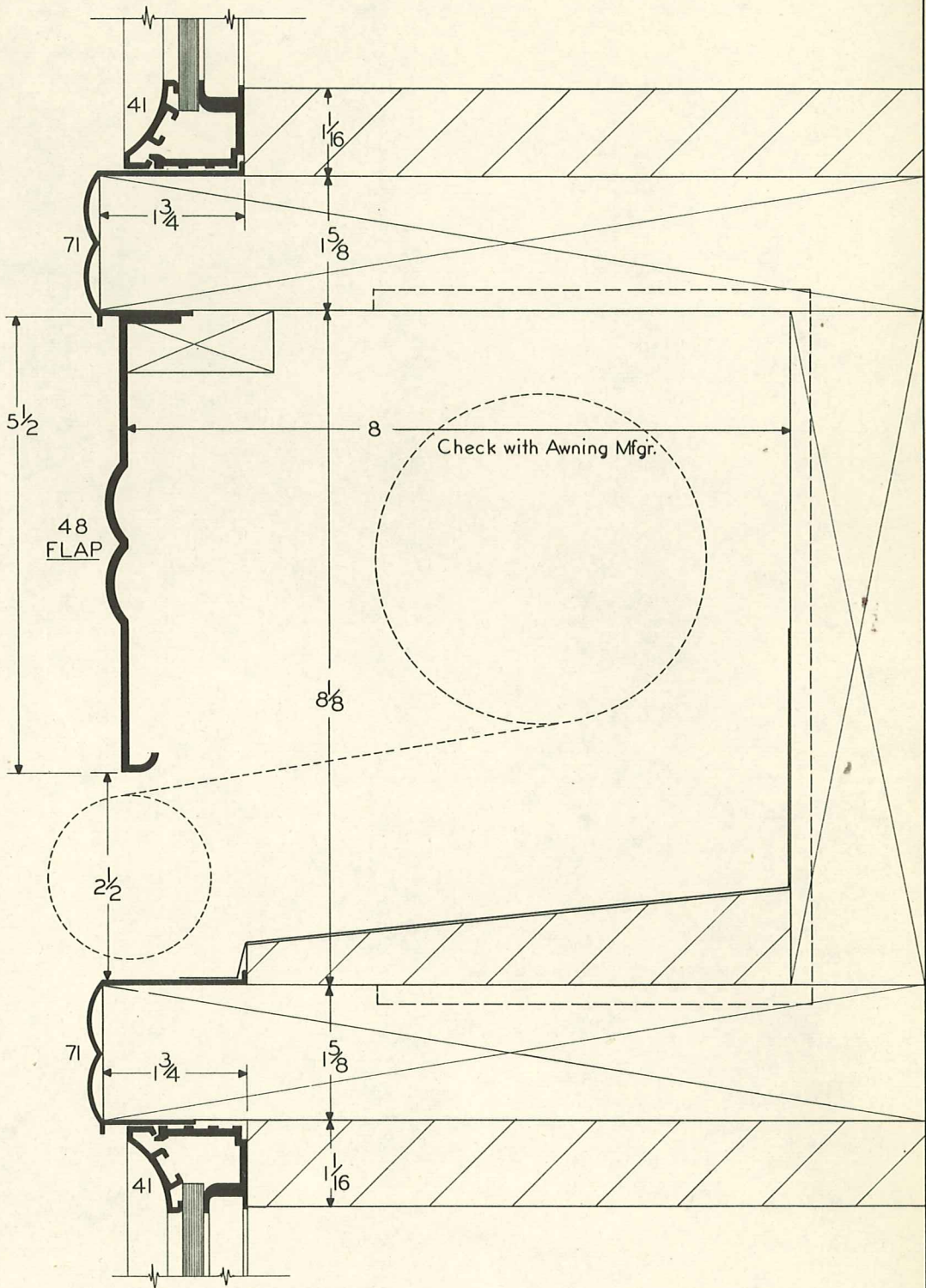
HALF SIZE DETAILS

NATCOR STORE FRONTS

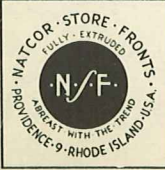
PLATE
8
1949



ELEVATION



RECESSED AWNING BAR



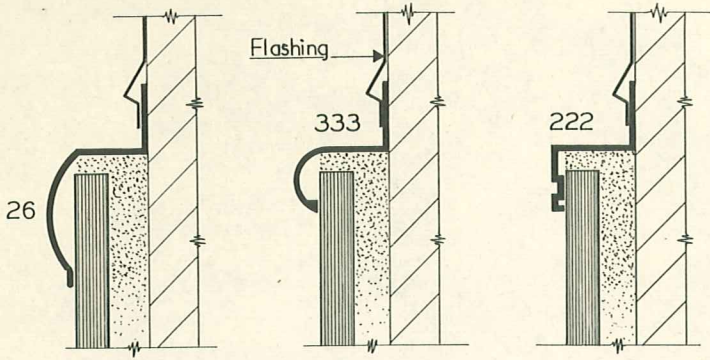
HALF SIZE DETAILS

NATCOR STORE FRONTS

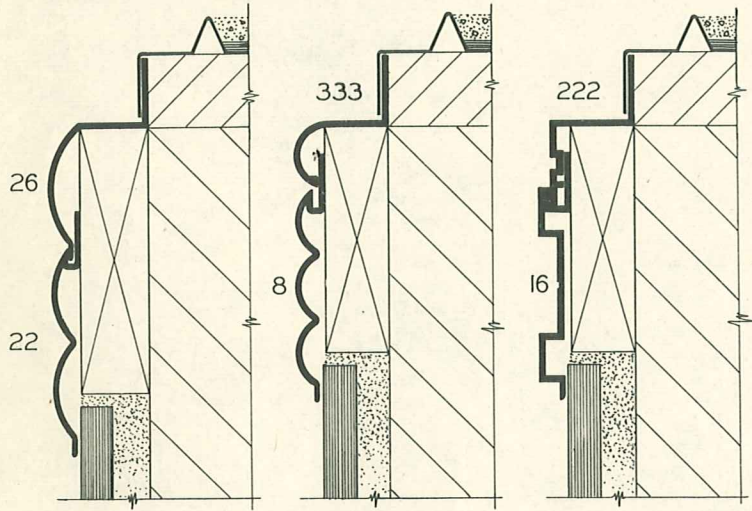
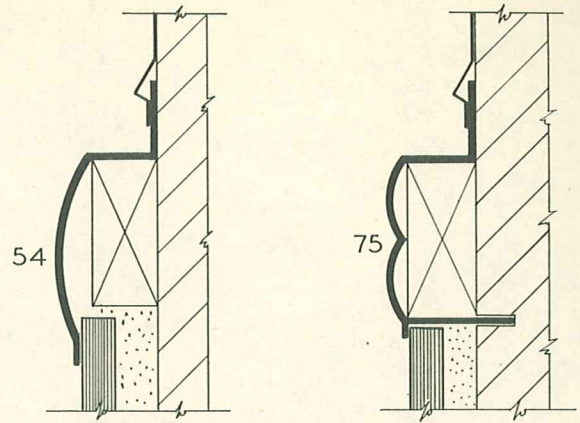
PLATE



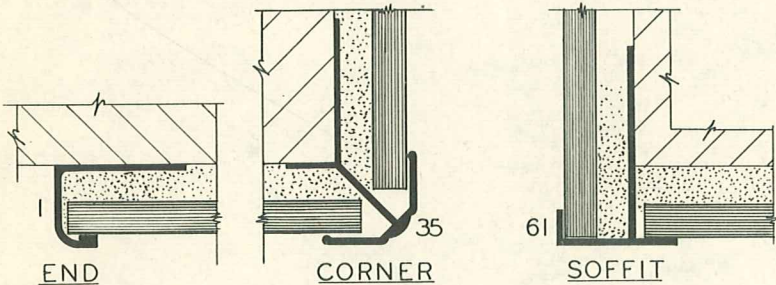
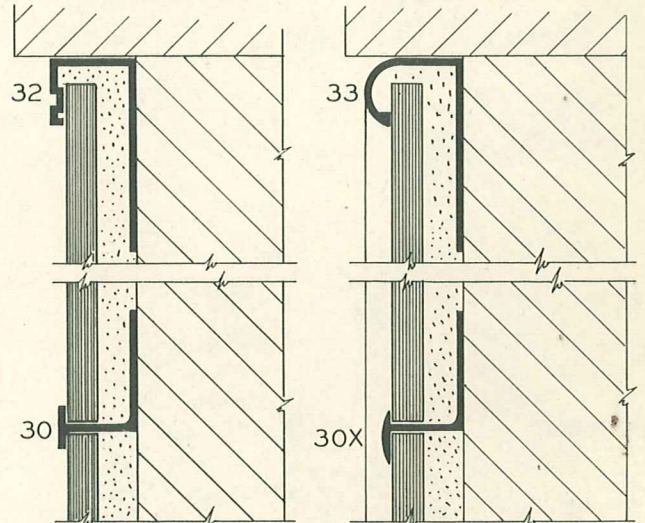
1949



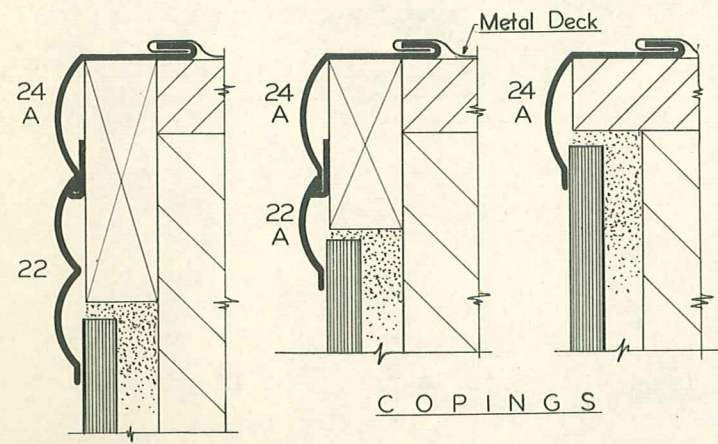
C A P P I N G S



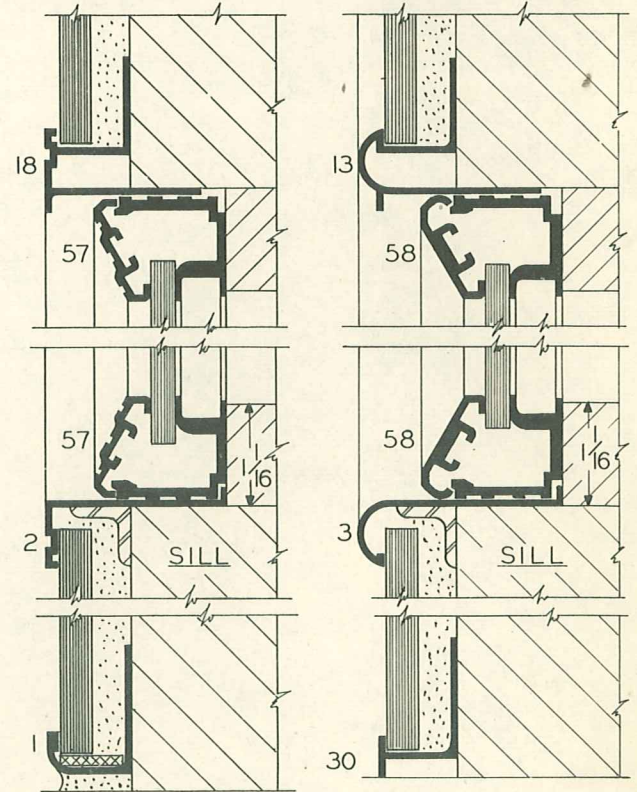
C O P I N G S



END CORNER SOFFIT



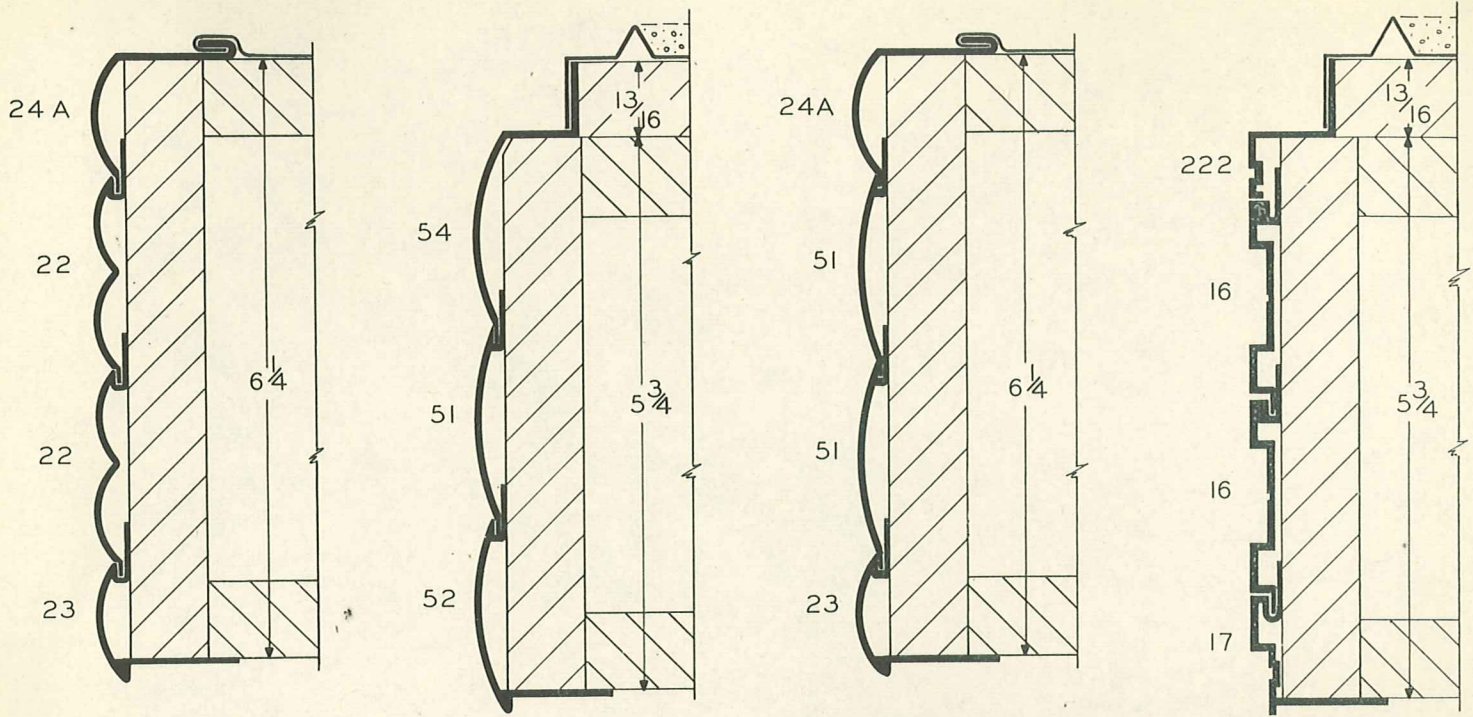
C O P I N G S



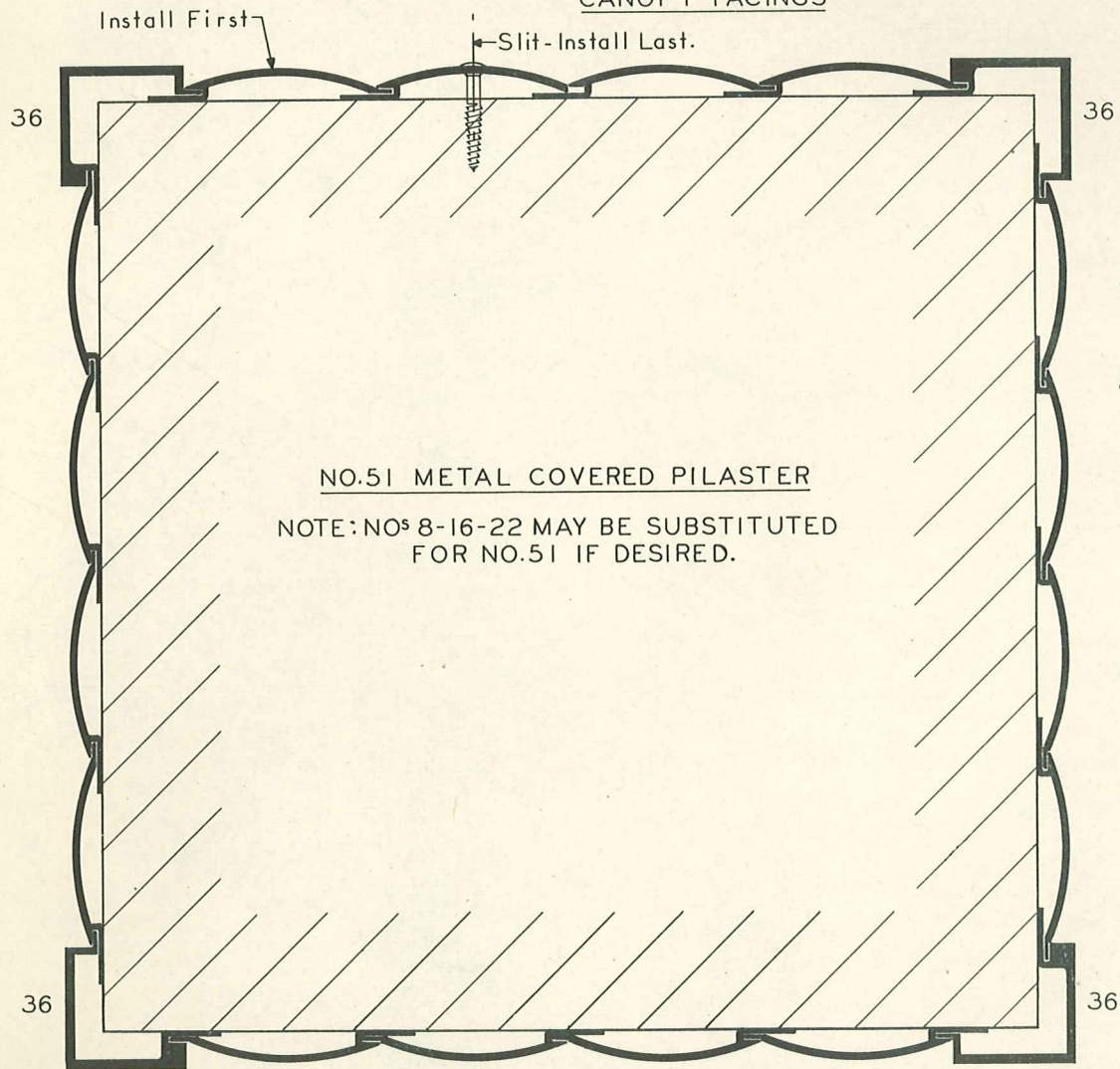
HALF SIZE DETAILS

NATCOR STORE FRONTS

PLATE
10
1949

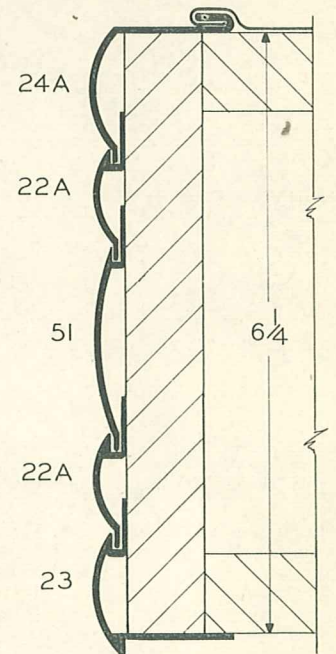


CANOPY FACINGS



NO.51 METAL COVERED PILASTER

NOTE: NOS 8-16-22 MAY BE SUBSTITUTED FOR NO.51 IF DESIRED.



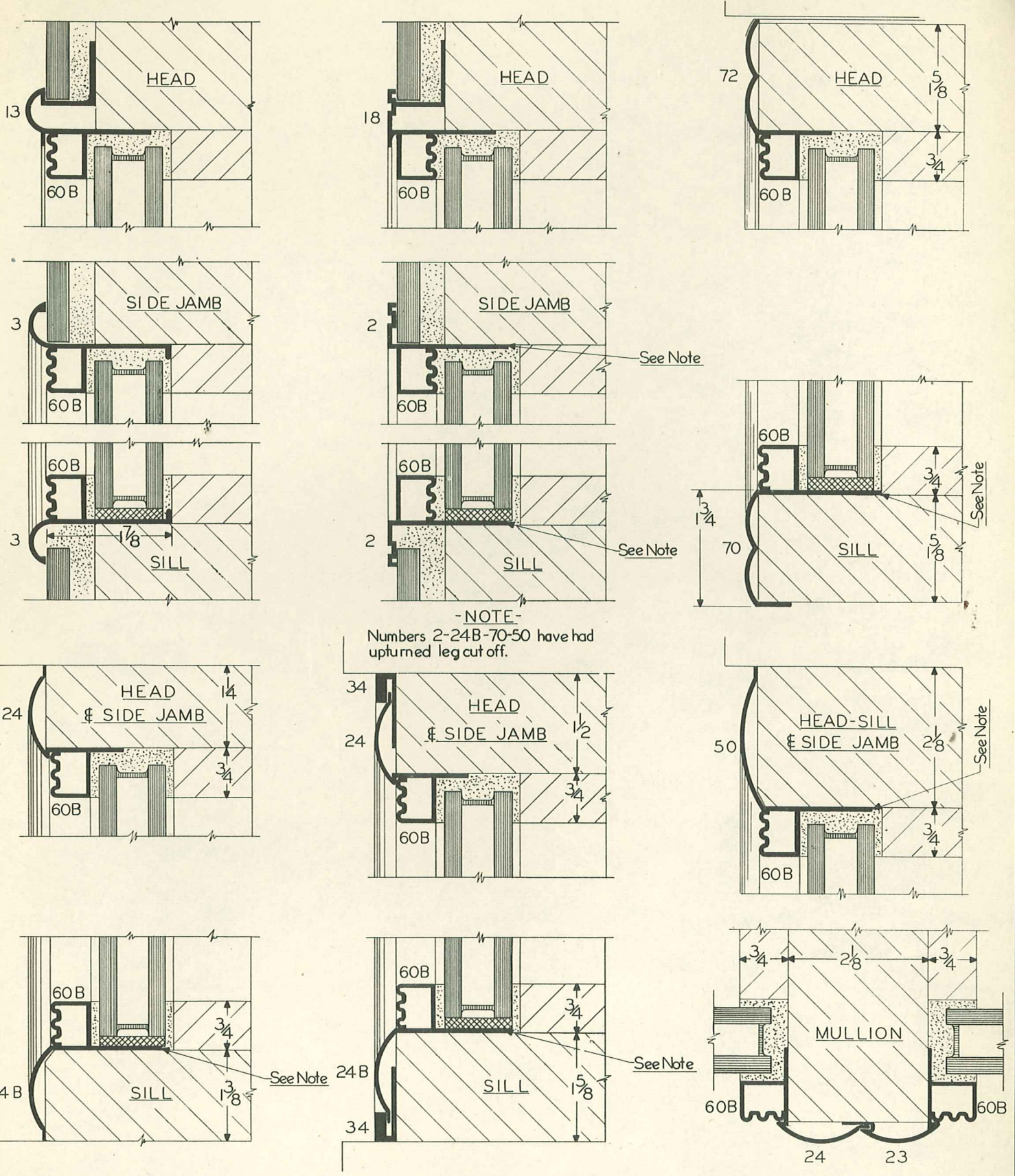
HALF SIZE DETAILS

NATCOR STORE FRONTS

PLATE



1949



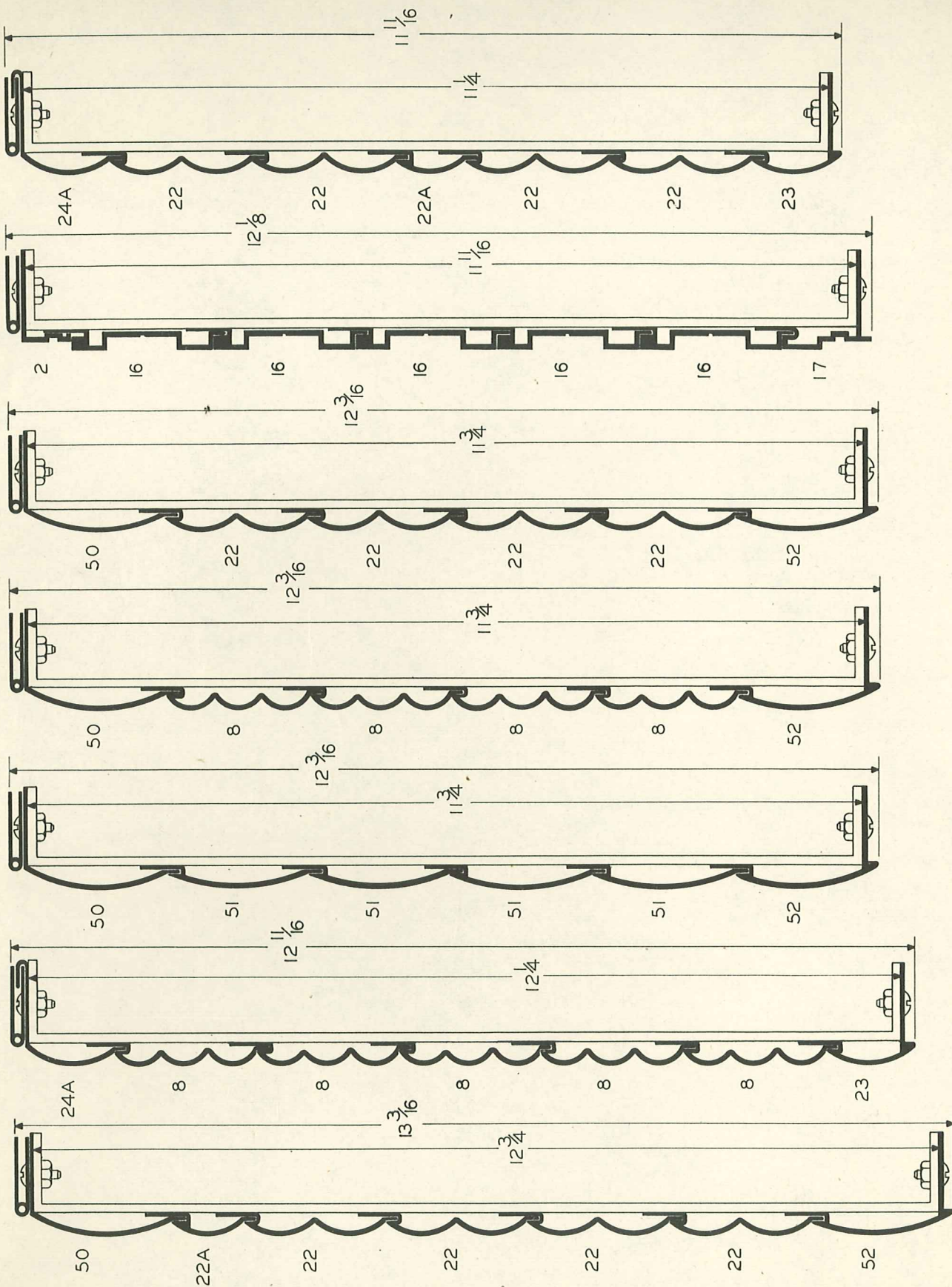
FOR THERMOPANE OR TWINDOW INSTALLATIONS

HALF SIZE DETAILS

NATCOR STORE FRONTS

PLATE
12
1949

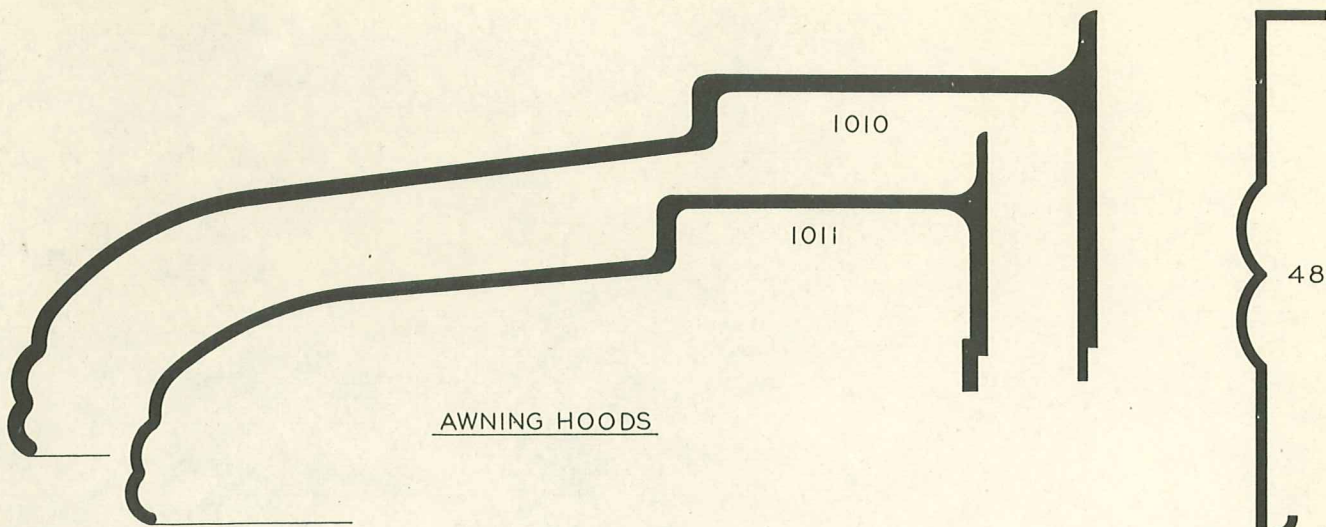




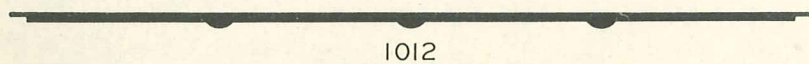
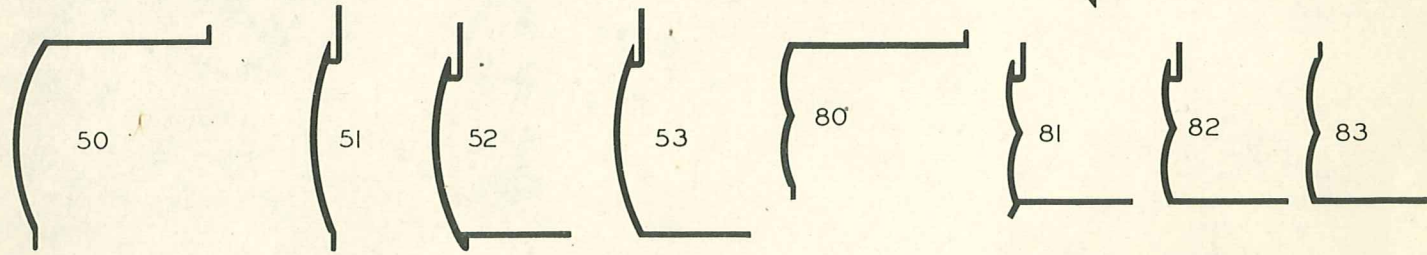
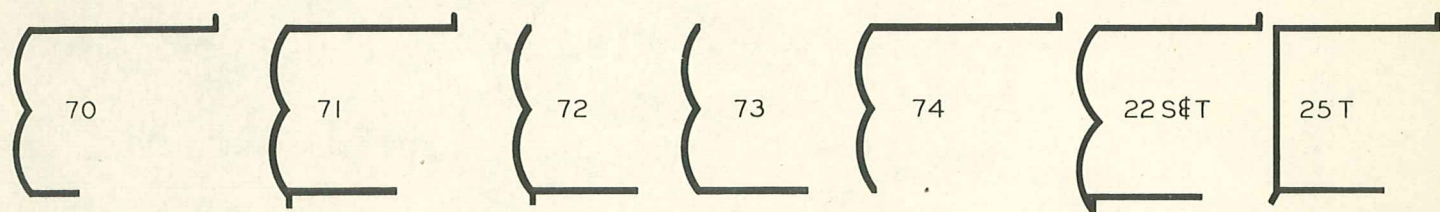
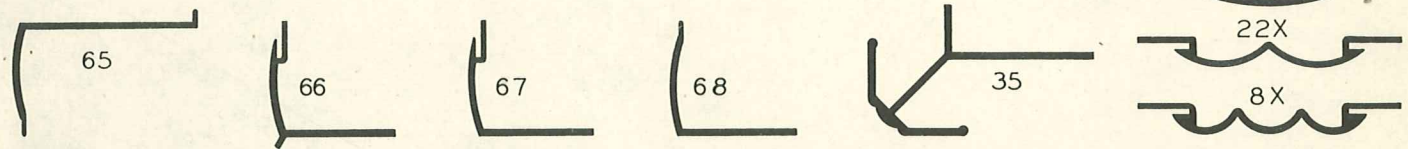
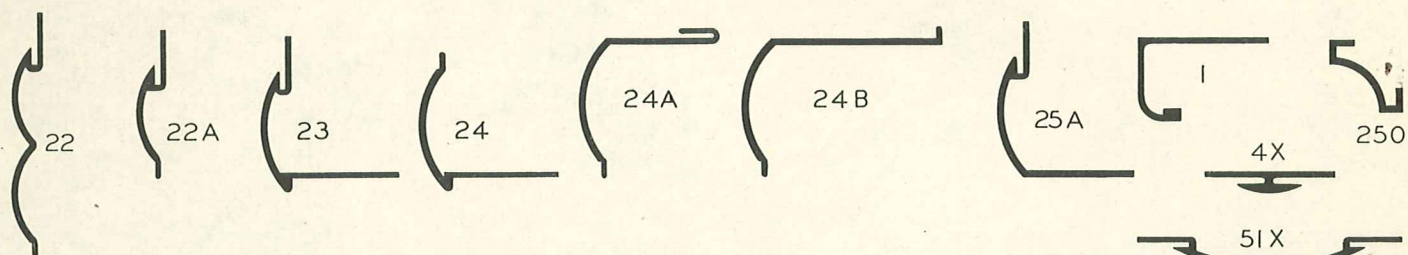
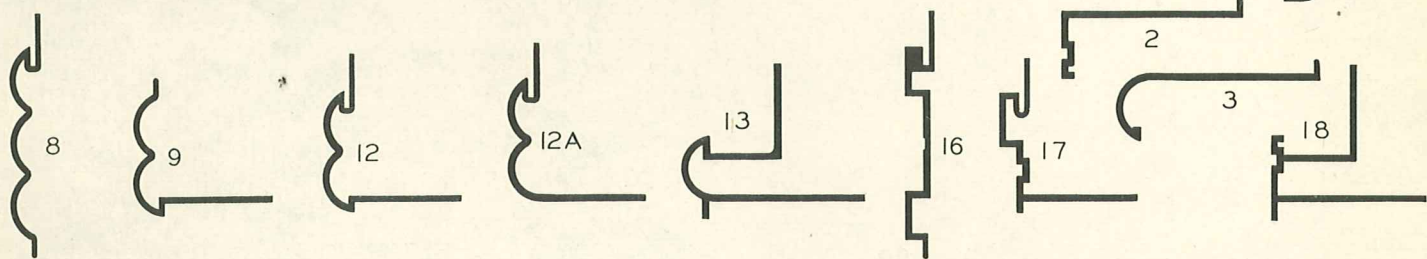
HALF SIZE DETAILS

NATCOR STORE FRONTS

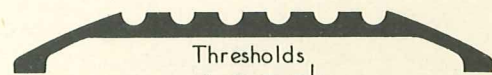




AWNING HOODS



1012



Thresholds
4-5-6-7 1/2



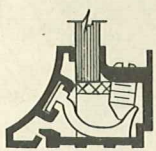
HALF SIZE DETAILS

NATCOR STORE FRONTS

PLATE

14

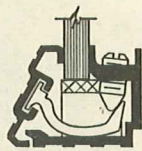
1949



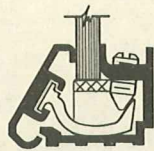
41



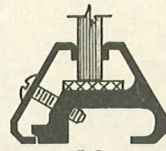
44



57



58



59

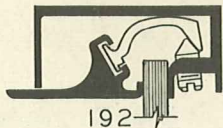


19

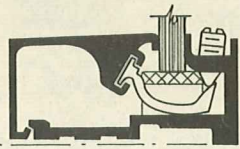


58A

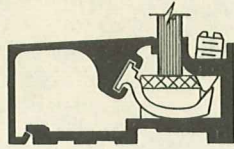
FACE ONLY



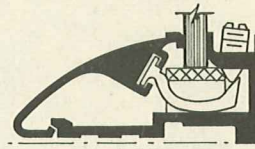
192



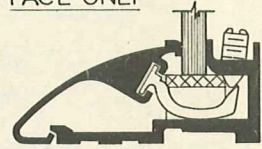
190



191

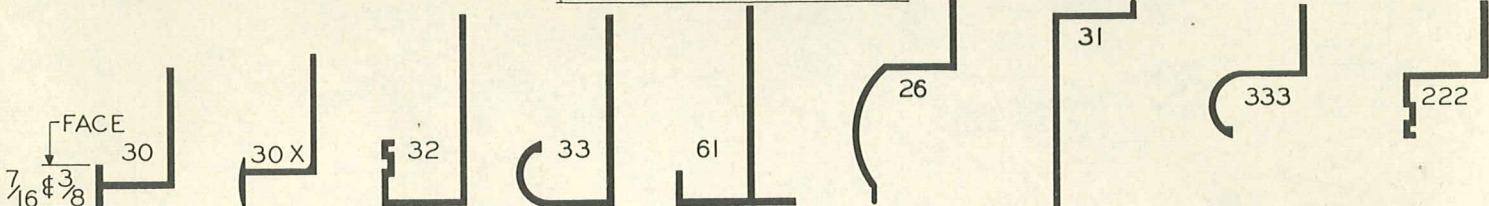


180



181

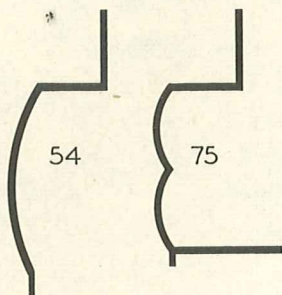
INVISIBLE FASTENING SASH



FACE
7/16 3/8

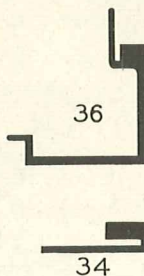


60 N
Shoe for 3/4
Glass Door
Side Light.



54

75



36

34



1000



92



91



90

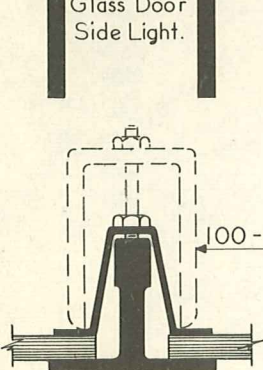


60B



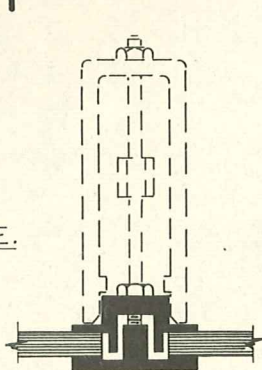
100-RE.

BAR
REINFORCING

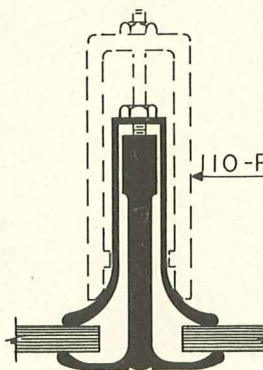


100-RE.

100
DIVISION BAR

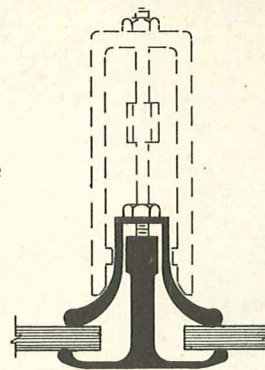


120
MUNTIN BAR



110-RE.

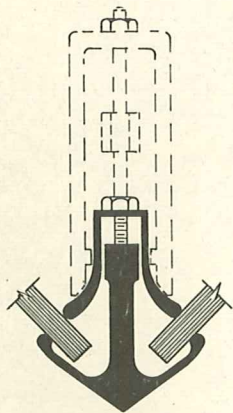
150
DIVISION BAR



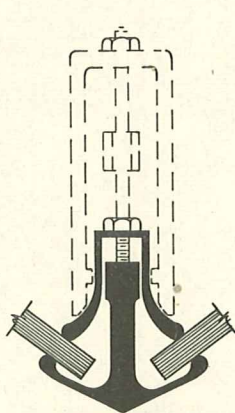
740
DIVISION BAR



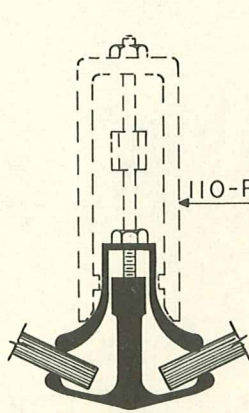
110-RE
BAR
REINFORCING



700
Angles 88°-106°

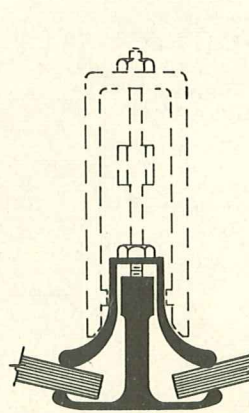


710
Angles 106°-128°

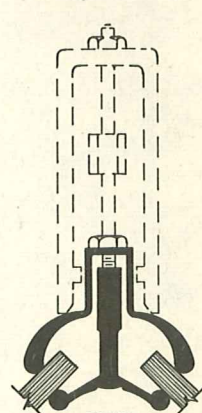


110-RE.

720
Angles 128°-152°



740
Angles 152°-180°



750
All Angles
REVERSE CORNER BAR

CORNER BARS

HALF SIZE DETAILS
NATCOR STORE FRONTS

PLATE

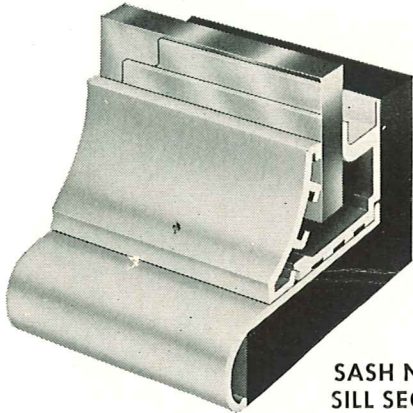
15

1949



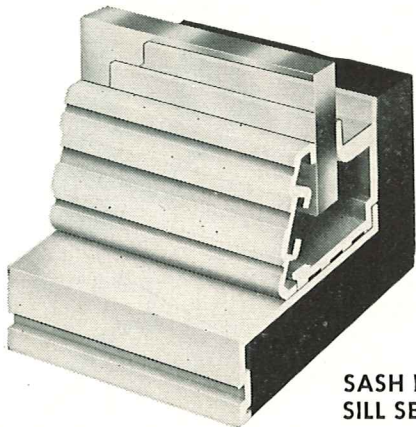
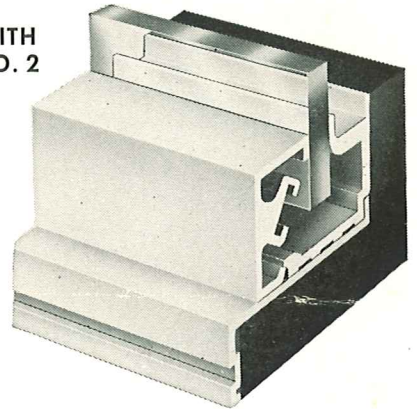
NATCOR GLASS SETTINGS

Our glass settings have the following features: they will support varying thicknesses of glass; are easy to mitre, wide trough permits drainage of excessive moisture from glass; invisible indirect screw pressure; screw can not possibly touch glass.



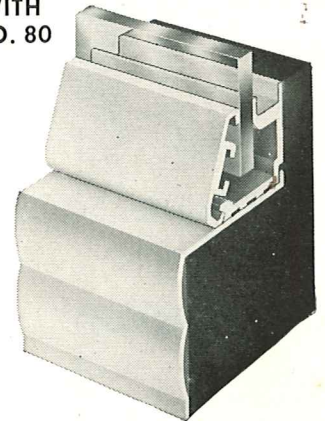
SASH NO. 41 WITH
SILL SECTION NO. 3

SASH NO. 44 WITH
SILL SECTION NO. 2

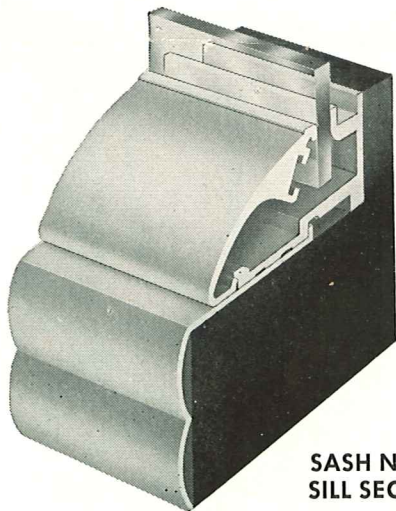


SASH NO. 57 WITH
SILL SECTION NO. 2

SASH NO. 58 WITH
SILL SECTION NO. 80

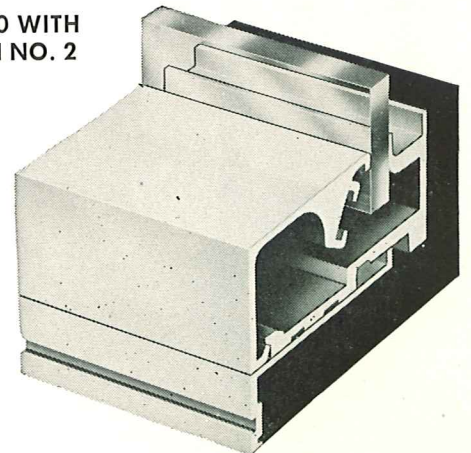


For other Sill Mouldings
see Pages: 6, 7 and 8

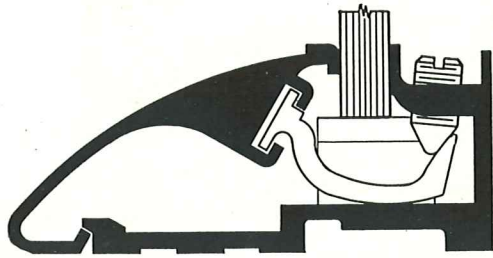


SASH NO. 180 WITH
SILL SECTION NO. 74

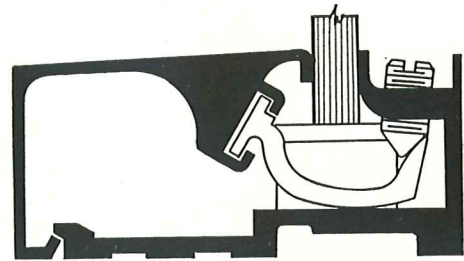
SASH NO. 190 WITH
SILL SECTION NO. 2



NATCOR EXTRUDED GLASS SETTINGS, BAR REINFORCEMENTS

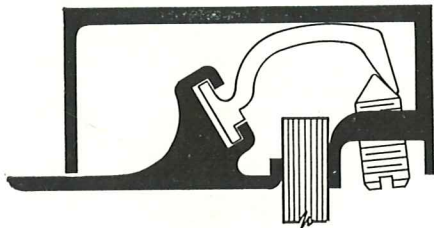


WIDE FACE SASH NO.181



WIDE FACE SASH NO.191

For Use Without Sill or Jamb Coverings



FLUSH SASH NO. 192

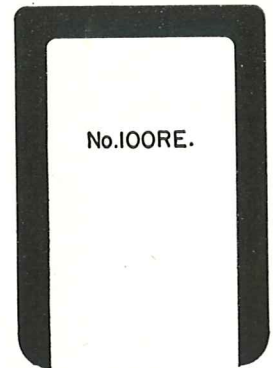


No.90

GLASS BEADS



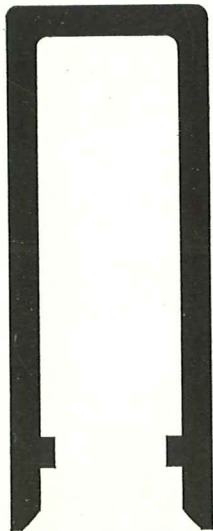
No.60B



No.100RE.

BAR REINFORCING

FOR NO. 100 BAR



NO.110 RE.
BAR REINFORCING

FOR ALL BARS
EXCEPT NO.100



NO.1000
DOOR JAMB

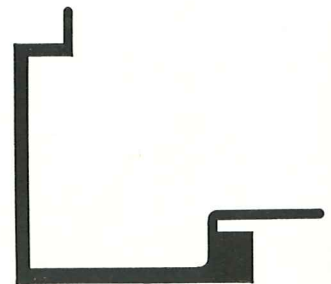


NO.92
DOOR STOP

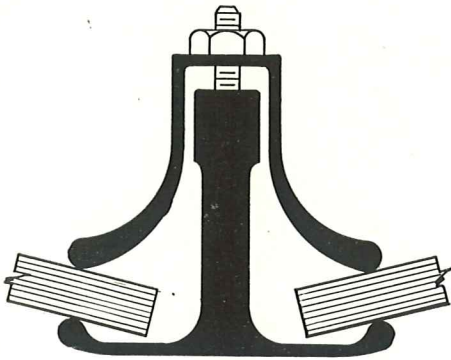
Details Full Size



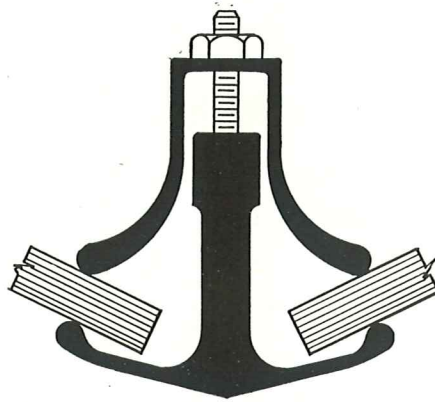
NO.250



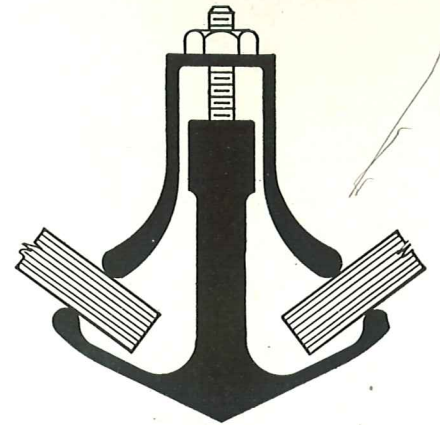
NO.36
CORNER MOULDING



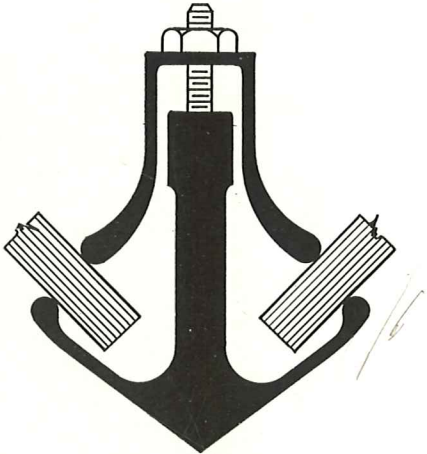
NO. 740
ANGLES 180°-152°



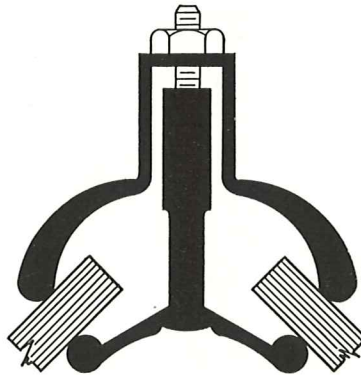
NO. 720
ANGLES 152°-128°



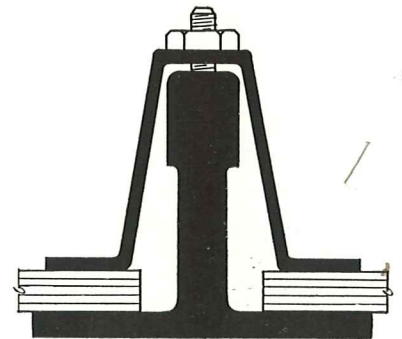
NO. 710
ANGLES 128°-106°



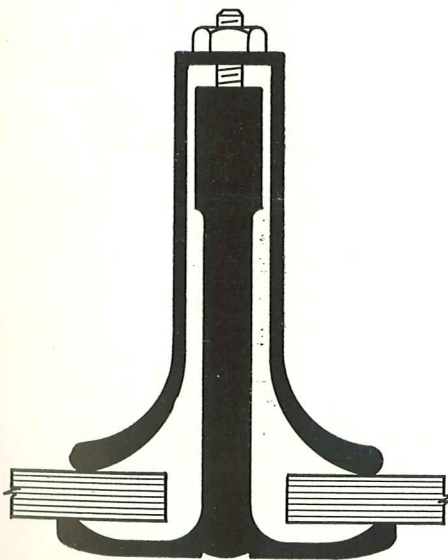
NO. 700
ANGLES 106°-88°



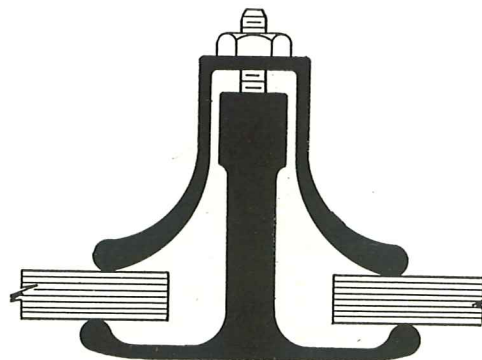
UNIVERSAL NO. 750
REVERSE CORNER BAR



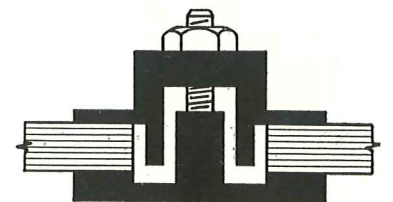
DIVISION BAR 100



DEEP DIVISION BAR 150



LIGHT DIVISION BAR 740

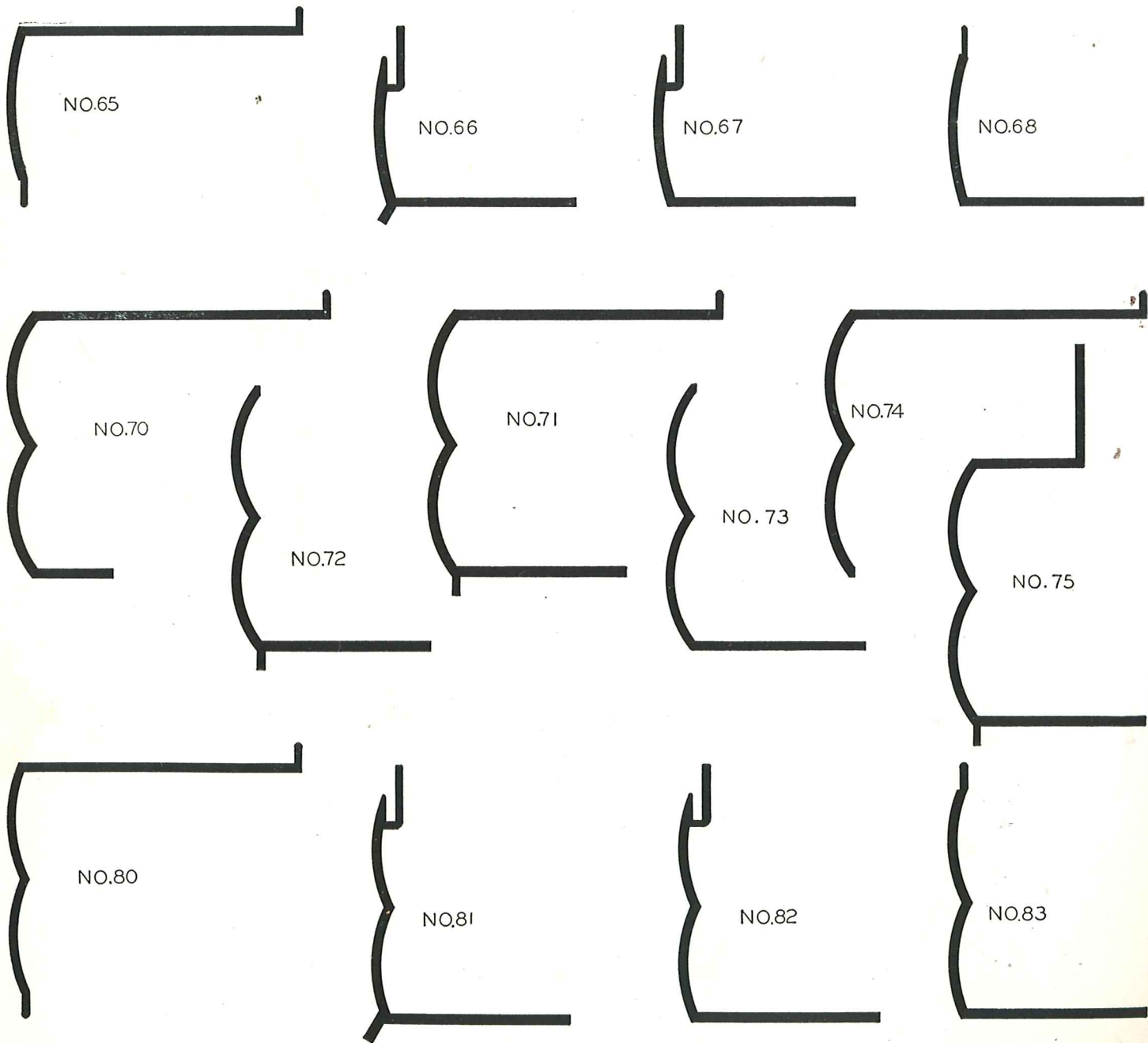


MUNTIN BAR 120

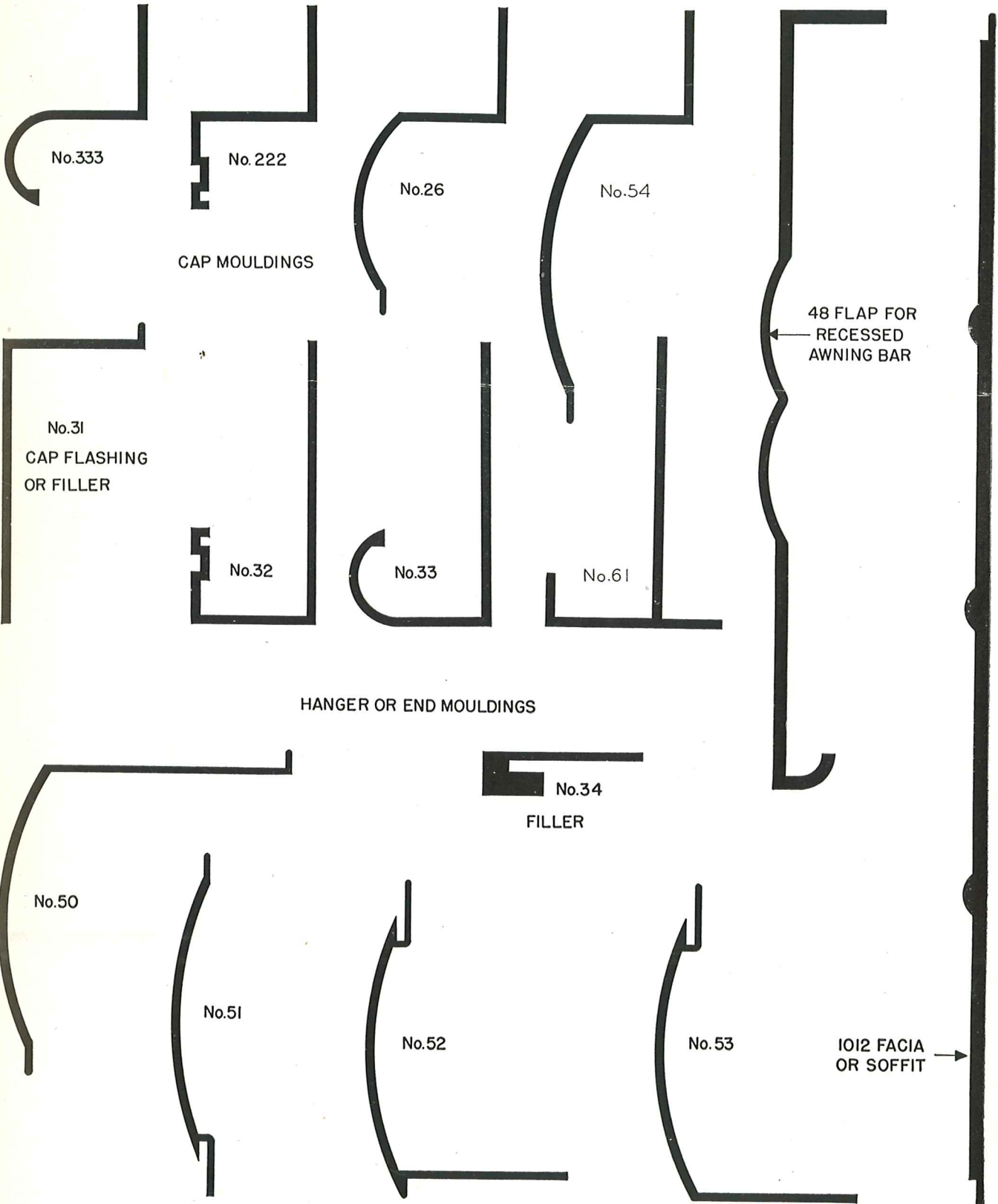
Details Full Size

TO ARCHITECTS

We shall be pleased to send you complete full size detail sheets of NATCOR Extruded Metal for Store Fronts. Write to NATCOR, Providence 9, R. I. There is no charge for this service.



Details Full Size



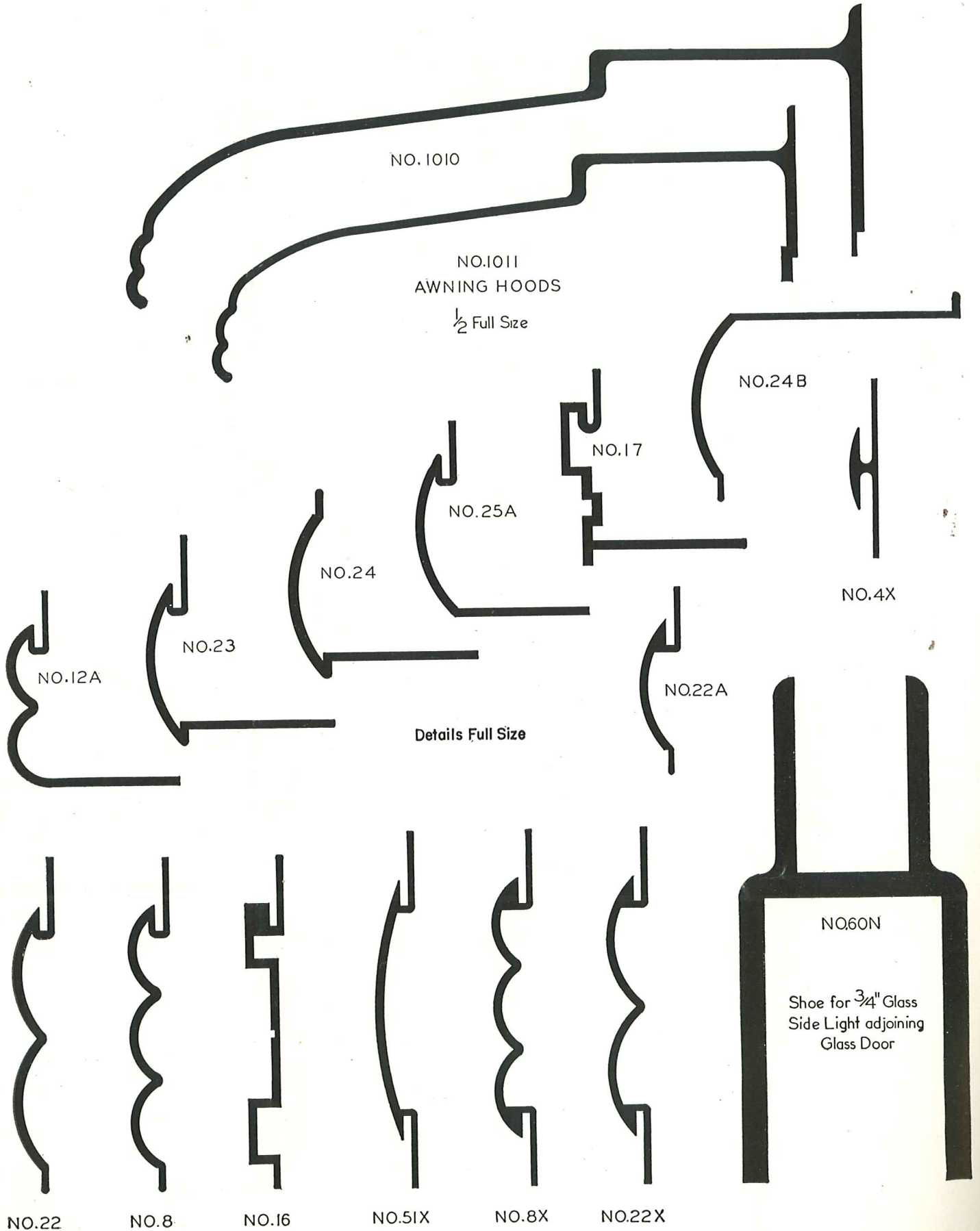
CAP MOULDINGS

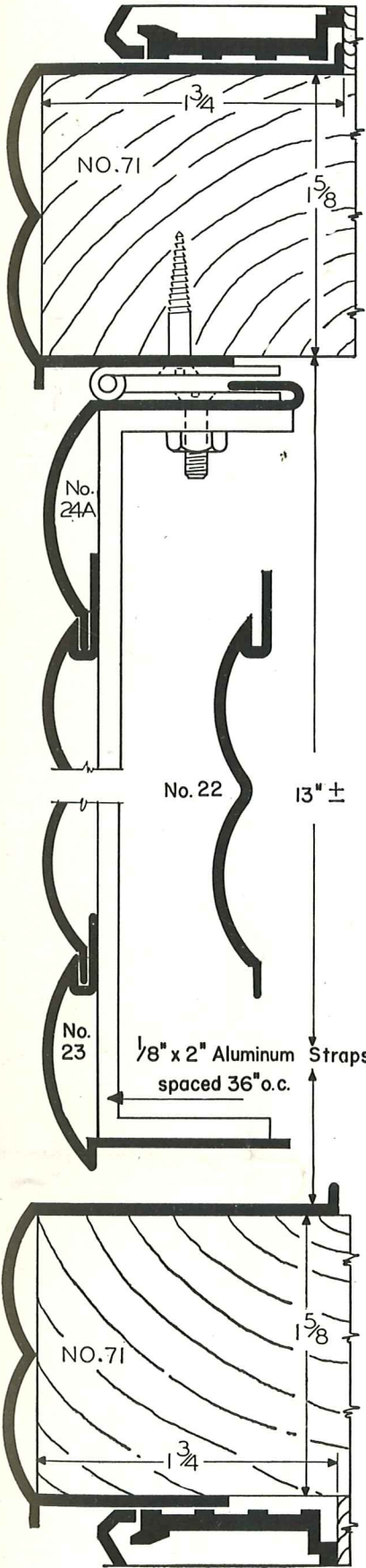
HANGER OR END MOULDINGS

2" SINGLE REED MOULDINGS

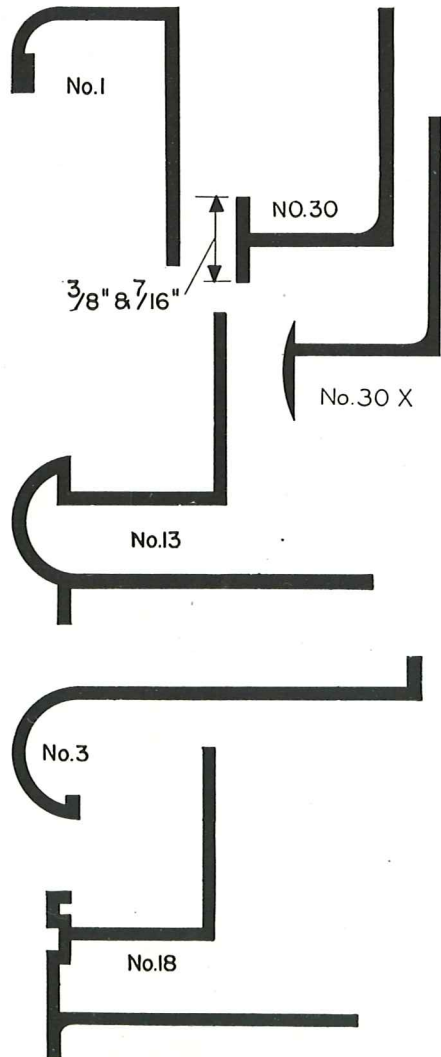
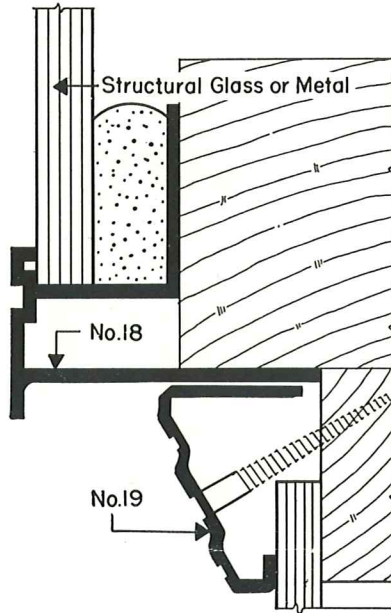
Details Full Size

AWNING HOODS VERTICAL AND HORIZONTAL MOULDINGS

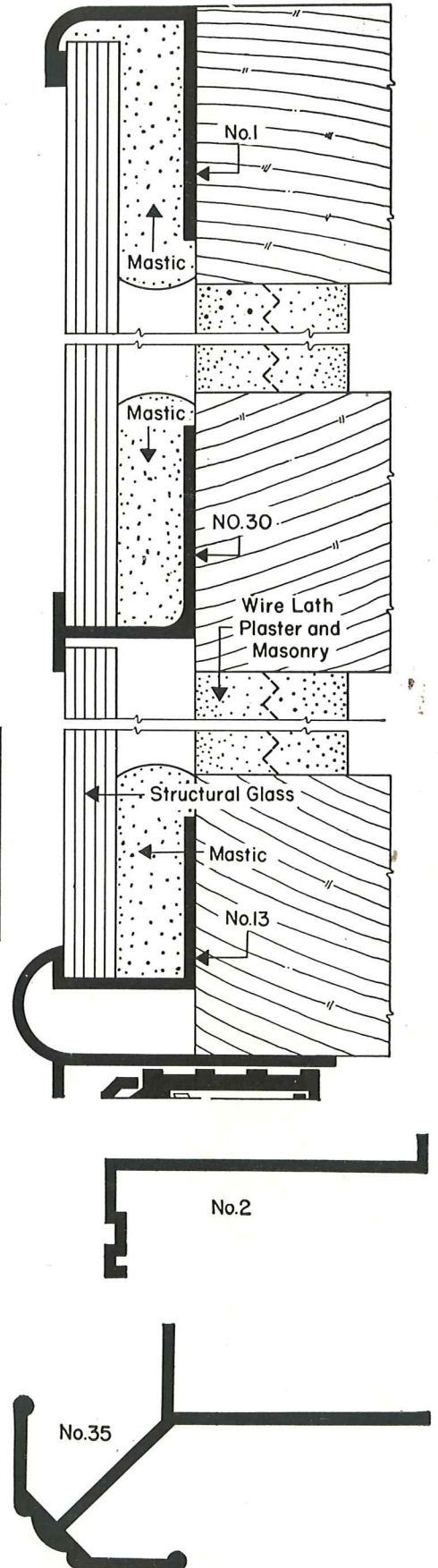




CONCEALED AWNING BAR

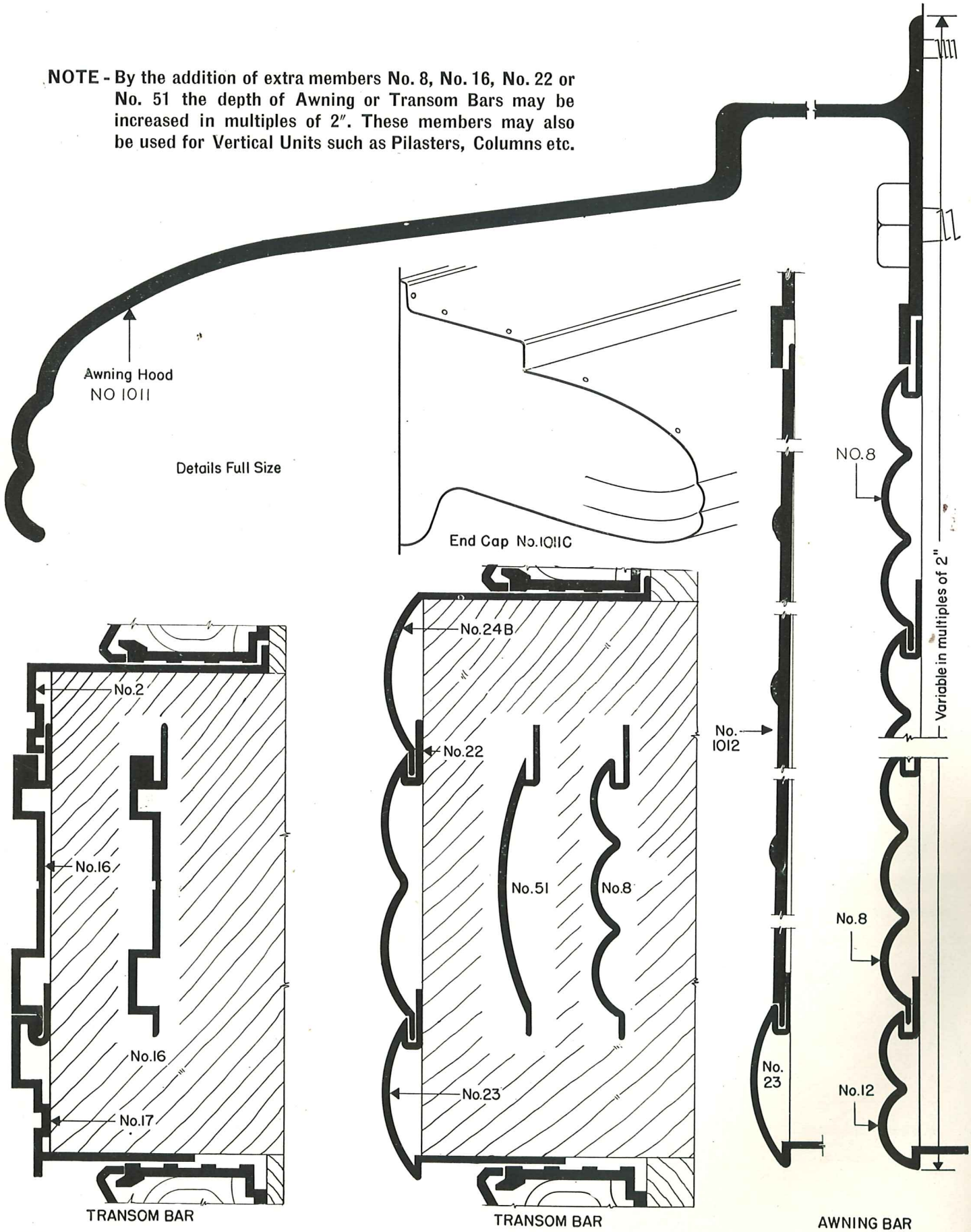


SECTIONS FOR USE WITH STRUCTURAL GLASS



TYPICAL NATCOR AWNING AND TRANSOM BARS

NOTE - By the addition of extra members No. 8, No. 16, No. 22 or No. 51 the depth of Awning or Transom Bars may be increased in multiples of 2". These members may also be used for Vertical Units such as Pilasters, Columns etc.



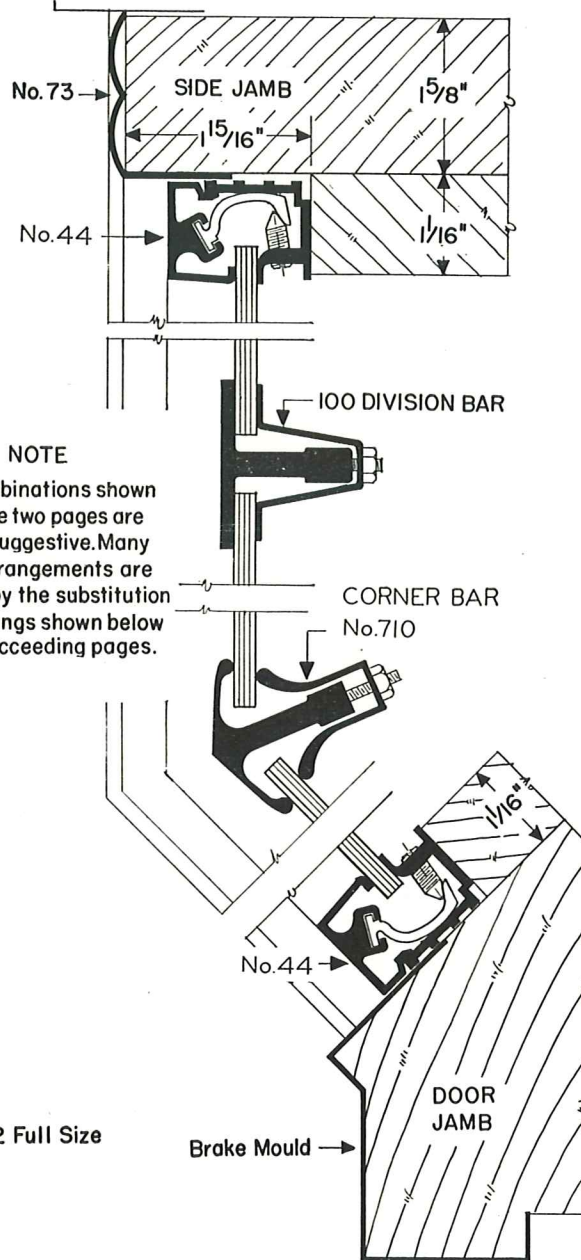
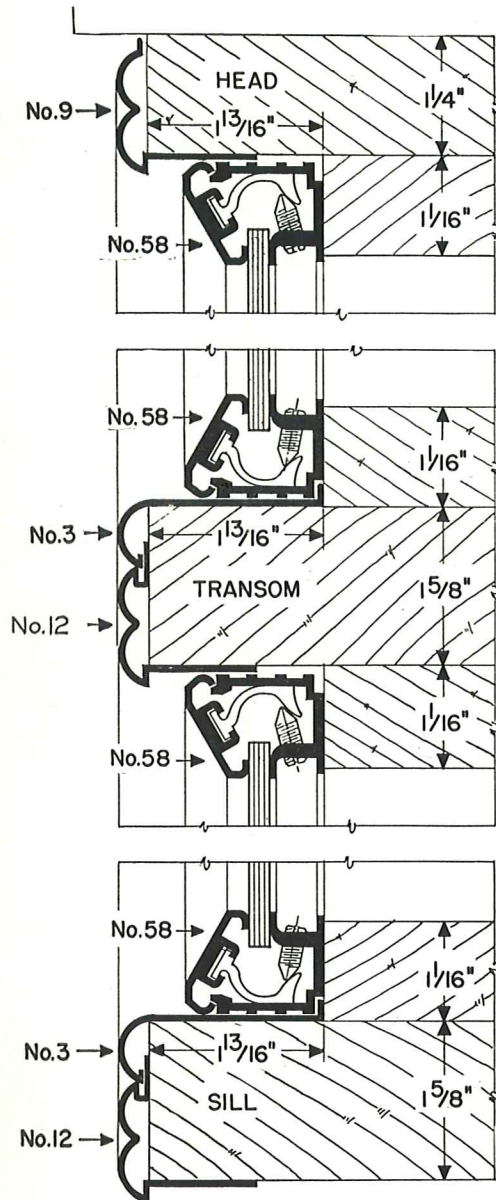
Details Full Size

End Cap No. 1011C

TRANSOM BAR

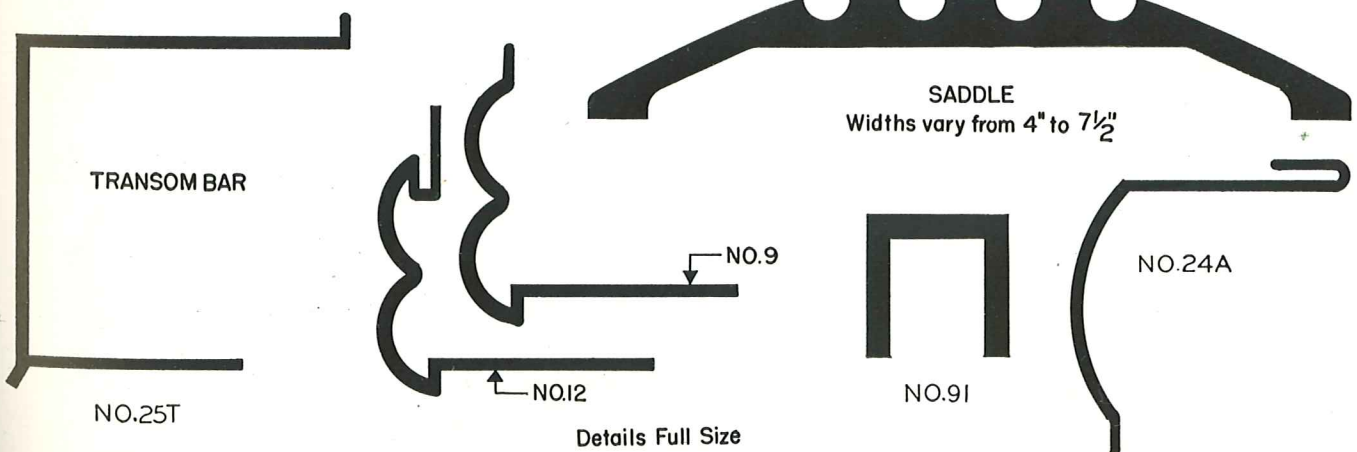
TRANSOM BAR

AWNING BAR



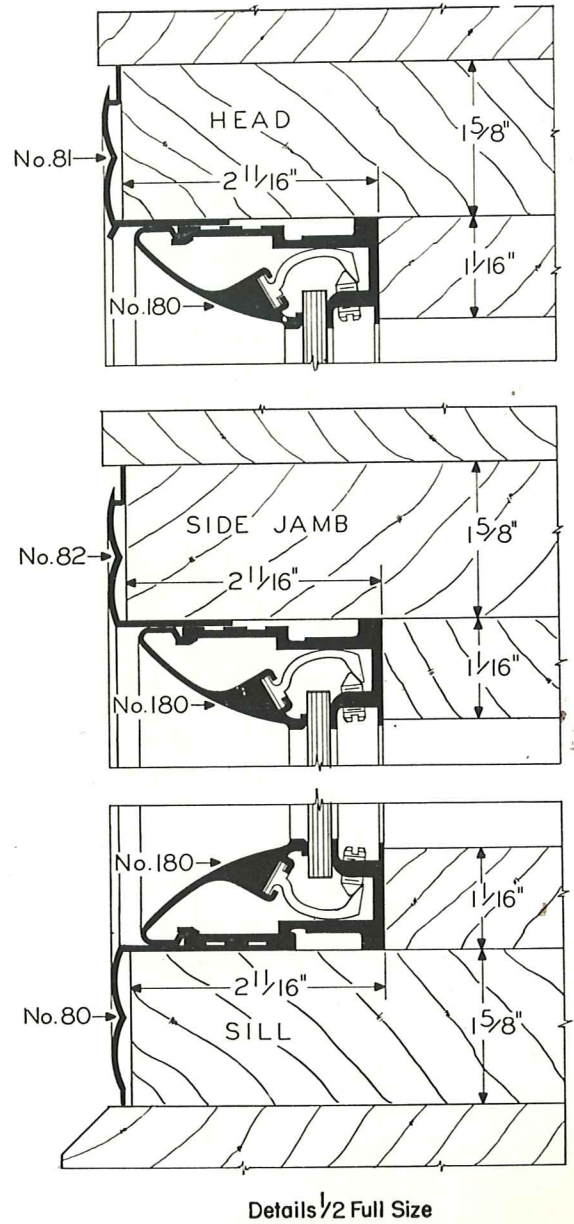
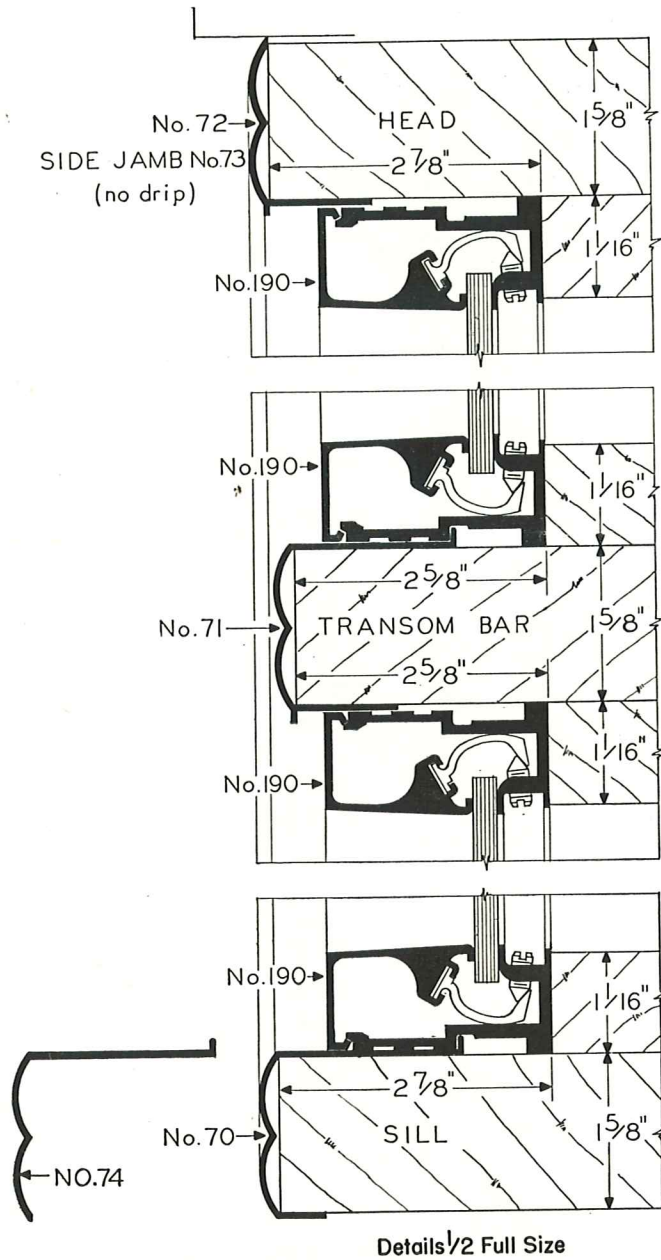
NOTE
The combinations shown on these two pages are merely suggestive. Many other arrangements are possible by the substitution of mouldings shown below or on succeeding pages.

Details 1/2 Full Size



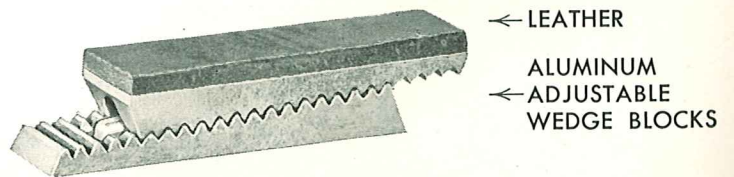
Details Full Size

TYPICAL GLASS SETTING CONSTRUCTION

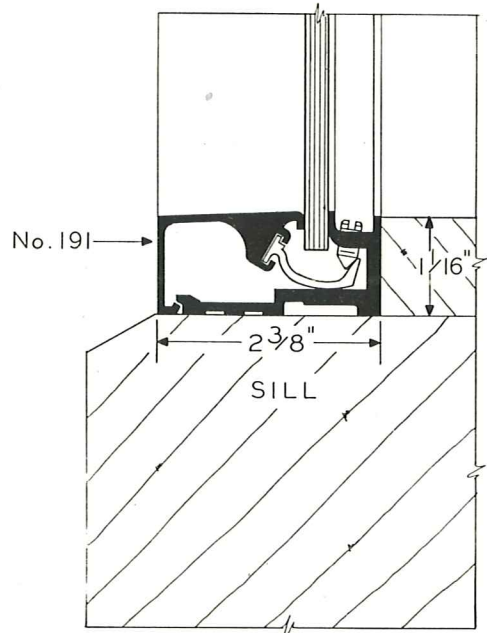
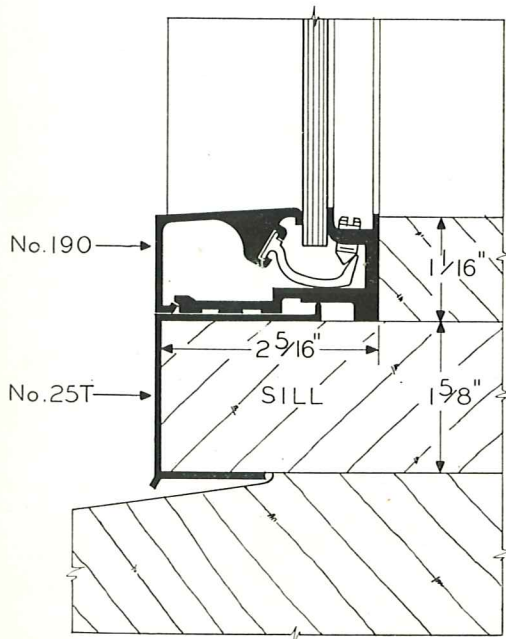
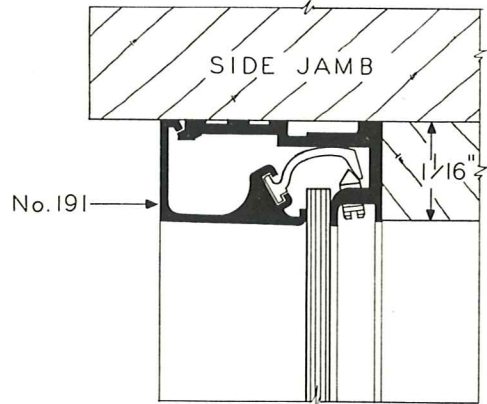
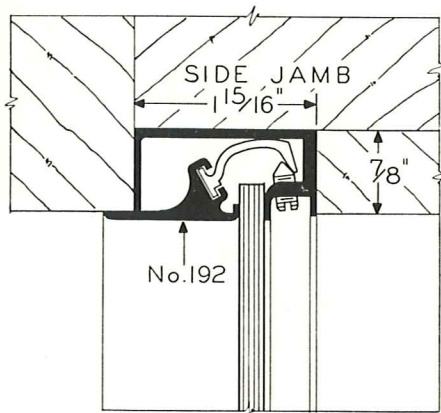
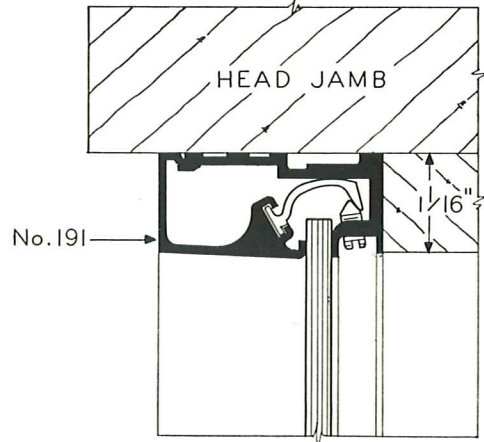
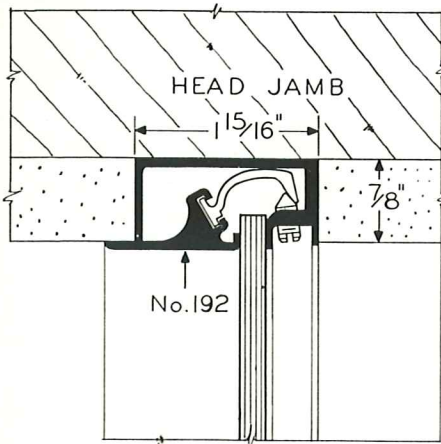


NATCOR

Wide solid aluminum adjustable setting blocks, with supporting leather cushion, permit quick setting of the glass, and are secure and dependable. Both inside and outside sections of sash are fully extruded.

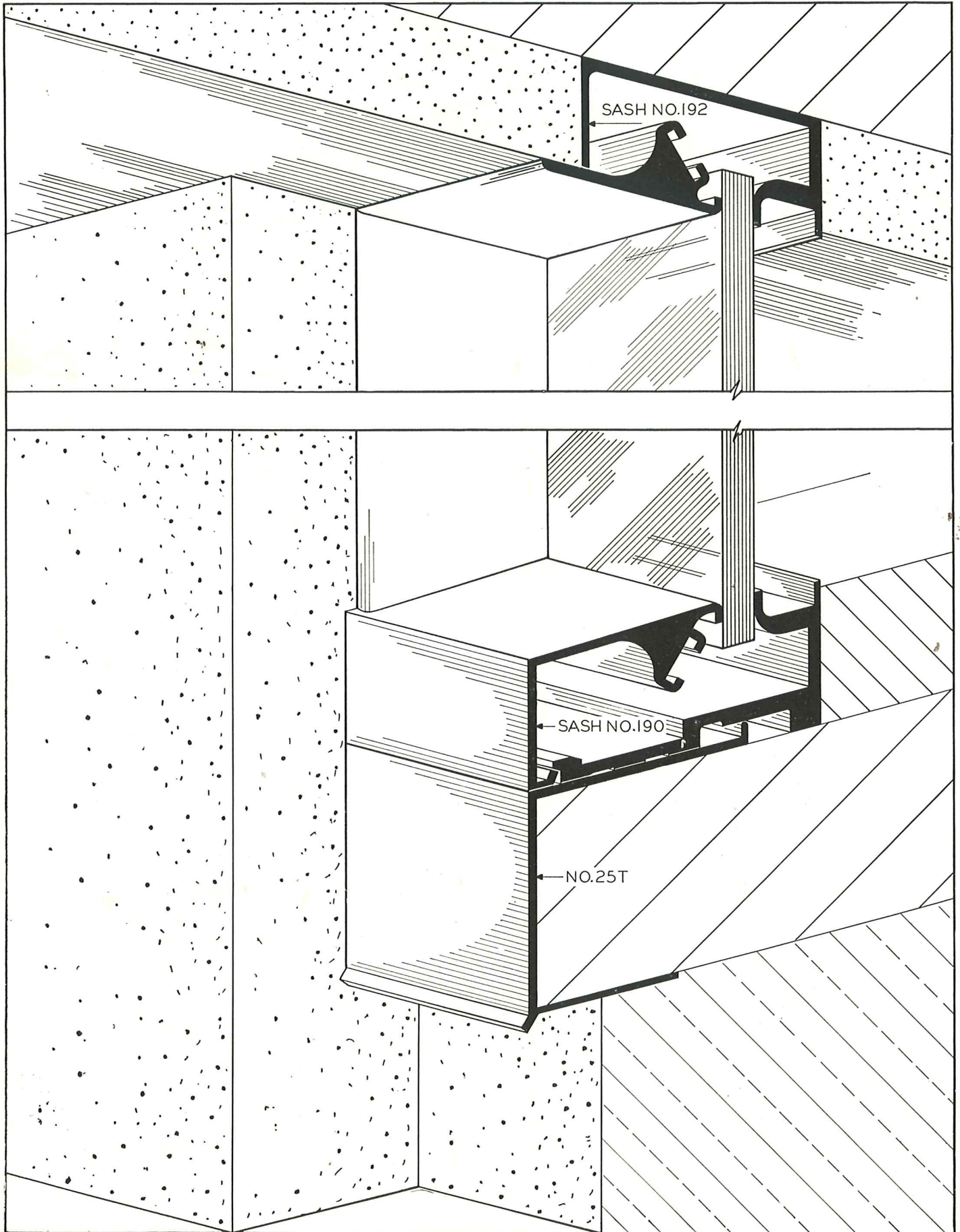


NATCOR ADJUSTABLE SETTING BLOCK
(Illustration slightly less than full size.)



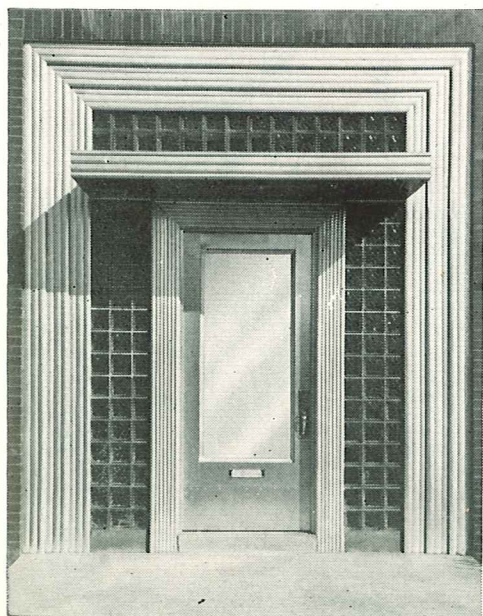
Details 1/2 Full Size

TYPICAL FLUSH GLASS SETTING CONSTRUCTION





Architect, Oliver O. Gauvin, A.I.A.



Architect,
D. Thomas Russillo, A.I.A.



Architect, Louis D. Richardson, Jr., A.I.A.

NATCOR distributors

Located in Principal Cities from Coast to Coast

AKRON, OHIO
ALBANY, N. Y.
ALEXANDRIA, LA.
ALLENTOWN, PA.
ALTOONA, PA.
AMARILLO, TEXAS
ANAHEIM, CAL.
ANDERSON, IND.
ANNISTON, ALA.
ASBURY PARK, N. J.
ASHLAND, KY.
ATLANTA, GA.
ATLANTIC CITY, N. J.
AUGUSTA, GA.
AURORA, ILL.
AUSTIN, IND.
AUSTIN, TEXAS
BAKERSFIELD, CAL.
BALTIMORE, MD.
BATON ROUGE, LA.
BATTLE CREEK, MICH.
BAY CITY, MICH.
BEAUMONT, TEXAS
BEAVER FALLS, PA.
BECKLEY, W. VA.
BELLINGHAM, WASH.
BELLWOOD, ILL.
BINGHAMTON, N. Y.
BIRMINGHAM, ALA.
BLOOMINGTON, ILL.
BLUEFIELD, W. VA.
BOSTON, MASS.
BOWLING GREEN, KY.
BRADENTON, FLA.
BRIDGEPORT, CONN.
BROCKTON, MASS.
BROOKLYN, N. Y.
BROWNSVILLE, TEXAS
BUFFALO, N. Y.
CADILLAC, MICH.
CAMBRIDGE, MASS.
CAMDEN, N. J.
CANTON, OHIO
CAPE GIRARDEAU, MO.
CEDAR RAPIDS, IOWA
CHAMPAIGN, ILL.
CHARLESTON, W. VA.
CHATANOOGA, TENN.
CHICAGO, ILL.
CINCINNATI, OHIO
CLARKSBURG, W. VA.
CLEVELAND, OHIO
CLIFTON, N. J.
COLUMBIA, S. C.
COLUMBUS, GA.
COLUMBUS, OHIO
CONCORD, N. H.
CORONA, L. I., N. Y.
CORPUS CHRISTI, TEXAS
DALLAS, TEXAS
DANVILLE, ILL.
DAYTONA BEACH, FLA.
DENVER, COLO.
DES MOINES, IOWA
DETROIT, MICH.
DUBUQUE, IOWA
DULUTH, MINN.
DOVER, N. H.
EAST CHICAGO, IND.
ELDORADO, ILL.
ELIZABETH, N. J.
ELMHURST, L. I., N. Y.
EL PASO, TEXAS
ELYRIA, OHIO

ERIE, PA.
EUGENE, ORE.
EUREKA, CAL.
EVERETT, WASH.
FAIRMONT, W. VA.
FALL RIVER, MASS.
FAYETTEVILLE, N. C.
FITCHBURG, MASS.
FLINT, MICH.
FLORAL PARK, N. Y.
FLUSHING, N. Y.
FORT DODGE, IOWA
FORT MYERS, FLA.
FORT SMITH, ARK.
FORT WAYNE, IND.
FORT WORTH, TEXAS
FREEPORT, ILL.
FREEPORT, L. I., N. Y.
FREMONT, OHIO
GADSDEN, ALA.
GARY, IND.
GOLDSBORO, N. C.
GRAND RAPIDS, MICH.
GREEN BAY, WIS.
GREENVILLE, MISS.
GREENVILLE, S. C.
HARTFORD, CONN.
HARTFORD CITY, IND.
HAVERHILL, MASS.
HOLYOKE, MASS.
HOT SPRINGS, ARK.
HOUSTON, TEXAS
HUNTINGTON, W. VA.
HUNTINGTON PARK, CAL.
INDIANAPOLIS, IND.
JACKSON, MICH.
JACKSON, MISS.
JACKSON, TENN.
JACKSONVILLE, FLA.
JACKSONVILLE, ILL.
JEFFERSON CITY, MO.
JERSEY CITY, N. J.
JOHNSTOWN, PA.
JONESBORO, ARK.
JOPLIN, MO.
KALAMAZOO, MICH.
KANKAKEE, ILL.
KANSAS CITY, MO.
KANSAS CITY, KAN.
KENOSHA, WIS.
KNOXVILLE, TENN.
LAKE CHARLES, LA.
LAKELAND, FLA.
LANSING, MICH.
LA PORTE, IND.
LAWRENCE, MASS.
LAWTON, OKLA.
LEWISTON, ME.
LEXINGTON, KY.
LINDEN, N. J.
LITTLE ROCK, ARK.
LOCKPORT, N. Y.
LONG BEACH, CAL.
LONGVIEW, TEXAS
LONGVIEW, WASH.
LORAIN, OHIO
LOS ANGELES, CAL.
LOUISVILLE, KY.
LOWELL, MASS.
LYNN, MASS.
MACON, GA.
MADISON, WIS.

MANCHESTER, N. H.
MANSFIELD, OHIO
MASSILLON, OHIO
MEDFORD, ORE.
MEMPHIS, TENN.
MERIDIAN, MISS.
MIAMI, FLA.
MIAMI BEACH, FLA.
MICHIGAN CITY, IND.
MIDDLETOWN, OHIO
MILWAUKEE, WIS.
MINNEAPOLIS, MINN.
MOBILE, ALA.
MONROE, LA.
MORGANTOWN, W. VA.
MOUNT VERNON, N. Y.
MUNCIE, IND.
MUSKOGEE, MICH.
MUSKOGEE, OKLA.
NASHUA, N. H.
NASHVILLE, TENN.
NEVADA, MO.
NEW ALBANY, IND.
NEWARK, N. J.
NEW BEDFORD, MASS.
NEW BRUNSWICK, N. J.
NEW HAVEN, CONN.
NEW LONDON, CONN.
NEW ORLEANS, LA.
NEWPORT, R. I.
NEW ROCHELLE, N. Y.
NEW YORK, N. Y.
NORFOLK, VA.
NORWICH, CONN.
OAKLAND, CAL.
OKLAHOMA CITY, OKLA.
OMAHA, NEB.
OTTAWA, ILL.
OWENSBORO, KY.
PALM SPRINGS, CAL.
PALO ALTO, CAL.
PAMPA, TEXAS
PASADENA, CAL.
PASSAIC, N. J.
PATERSON, N. J.
PAWTUCKET, R. I.
PENSACOLA, FLA.
PEORIA, ILL.
PERTH AMBOY, N. J.
PHILADELPHIA, PA.
PHOENIX, ARIZ.
PITTSBURG, CAL.
PITTSBURGH, PA.
PITTSFIELD, MASS.
PLAINFIELD, N. J.
PORT ARTHUR, TEXAS
PORTLAND, ME.
PORTLAND, ORE.
PORT RICHMOND, S. I., N. Y.
PORTSMOUTH, N. H.
PROVIDENCE, R. I.
QUINCY, ILL.
QUINCY, MASS.
RACINE, WIS.
REDWOOD CITY, CAL.
RENO, NEV.
REYNOLDSVILLE, PA.
RICHMOND, CAL.
RICHMOND, MASS.
RICHMOND, IND.
RICHMOND, VA.
RIVERSIDE, CAL.
ROANOKE, VA.

ROCKFORD, ILL.
ROCK ISLAND, ILL.
ROYAL OAK, MICH.
SACRAMENTO, CAL.
SAGINAW, MICH.
ST. JOSEPH, MO.
ST. LOUIS, MO.
ST. PAUL, MINN.
ST. PETERSBURG, FLA.
SALEM, MASS.
SALINA, KAN.
SALINAS, CAL.
SALISBURY, MD.
SAN ANGELO, TEXAS
SAN ANTONIO, TEXAS
SAN BERNARDINO, CAL.
SAN DIEGO, CAL.
SAN FRANCISCO, CAL.
SAN JOSE, CAL.
SAN MATEO, CAL.
SANTA ROSA, CALIF.
SAVANNAH, GA.
SCHENECTADY, N. Y.
SCRANTON, PA.
SEATTLE, WASH.
SELMA, ALA.
SIOUX CITY, IOWA
SOMERVILLE, MASS.
SOUTH BEND, IND.
SPOKANE, WASH.
SPRINGFIELD, ILL.
SPRINGFIELD, MASS.
SPRINGFIELD, MO.
SPRINGFIELD, OHIO
STAMFORD, CONN.
STUBENVILLE, OHIO
SUNBURY, PA.
SYRACUSE, N. Y.
TAMPA, FLA.
TAUNTON, MASS.
TERRE HAUTE, IND.
TEXARKANA, TEXAS
TOLEDO, OHIO
TRENTON, N. J.
TROY, N. Y.
TUCSON, ARIZ.
TULSA, OKLA.
TUSCALOOSA, ALA.
TYLER, TEXAS
UTICA, N. Y.
VALDOSTA, GA.
VALLEJO, CAL.
VICKSBURG, MISS.
WACO, TEXAS
WASHINGTON, D. C.
WARSAW, VA.
WATERBURY, CONN.
WATERLOO, IOWA
WATERTOWN, MASS.
WATERTOWN, N. Y.
WAUSAU, WIS.
WAYCROSS, GA.
WEST NEW YORK, N. J.
WEST PALM BEACH, FLA.
WILLIAMSON, W. VA.
WHEELING, W. VA.
WHITE PLAINS, N. Y.
WILKES-BARRE, PA.
WILMINGTON, N. C.
WOONSOCKET, R. I.
WORCESTER, MASS.
YOUNGSTOWN, OHIO

Represented in Foreign Cities

BRANTFORD, ONTARIO, CANADA
HAVANA, CUBA
HALIFAX, N. S., CANADA
HAMILTON, ONTARIO, CANADA
JOHANNESBURG, SOUTH AFRICA
JUNEAU, ALASKA
LONDON, ONTARIO, CANADA
MAYAGUEZ, PUERTO RICO
MEXICO, D. F., MEXICO

MONTREAL, P. Q., CANADA
NEW WESTMINSTER, B. C., CANADA
OTTAWA, ONTARIO, CANADA
PANAMA, REPUBLIC OF PANAMA
QUEBEC CITY, P. Q., CANADA
ST. CATHERINES, ONTARIO, CANADA
SAN JUAN, PUERTO RICO
SANTURCE, PUERTO RICO

SARNIA, ONTARIO, CANADA
SHERBROOKE, P. Q., CANADA
TROIS RIVIERES, P. Q., CANADA
TORONTO, ONTARIO, CANADA
VANCOUVER, B. C., CANADA
VERDUN, P. Q., CANADA
WELLAND, ONTARIO, CANADA
WINDSOR, ONTARIO, CANADA

Printed in U. S. A.

NATCOR — Providence 9, Rhode Island