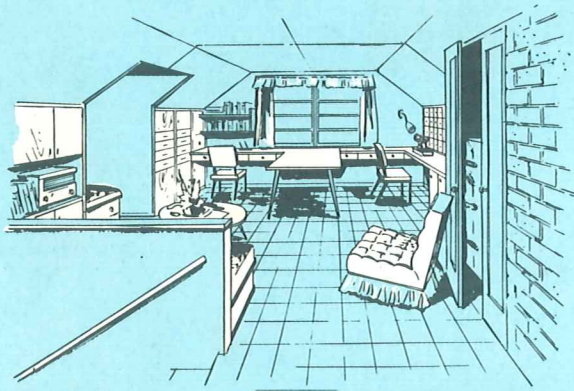
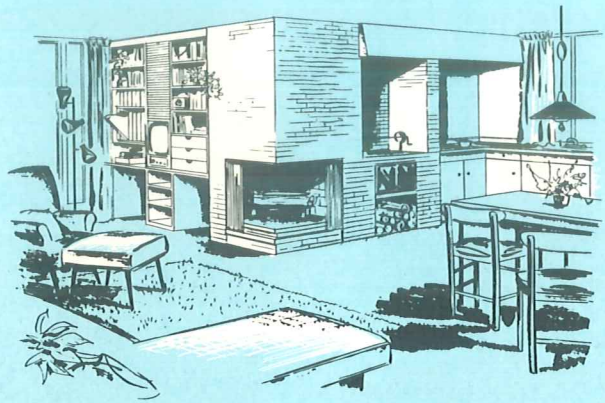


multi-level
HOMES

FE, G.



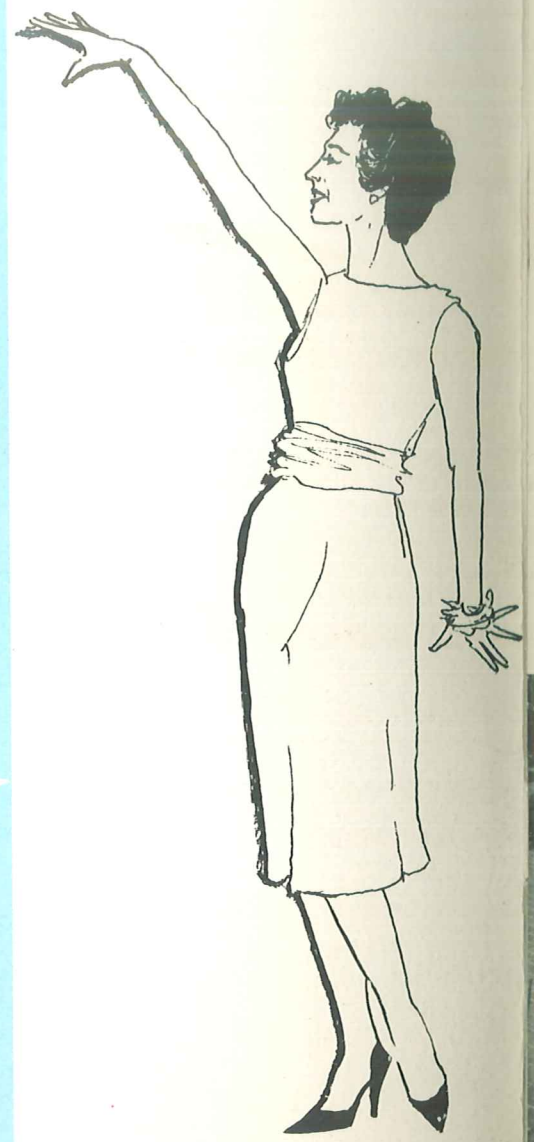
from attic to basement



...plan "built-ins" for

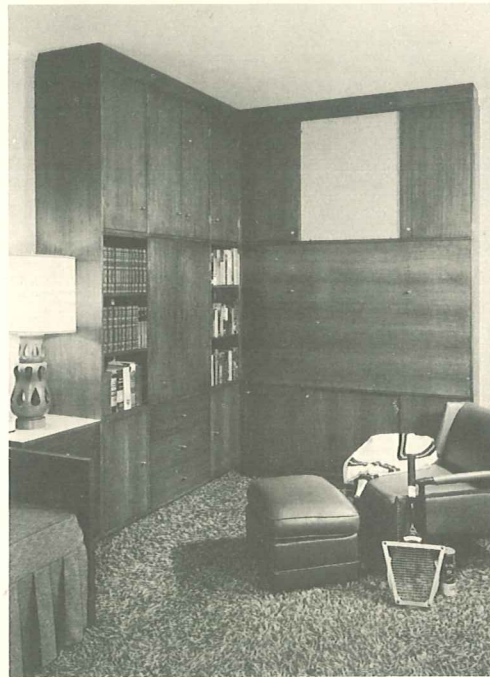


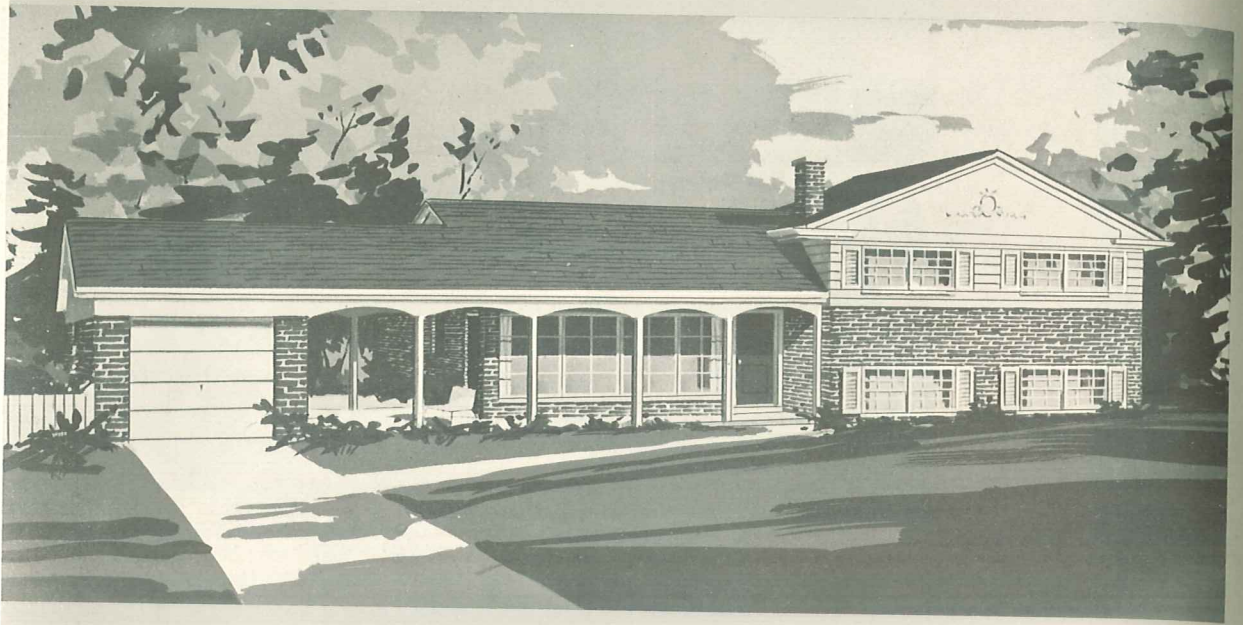
convenience and storage





bright ideas for your home...





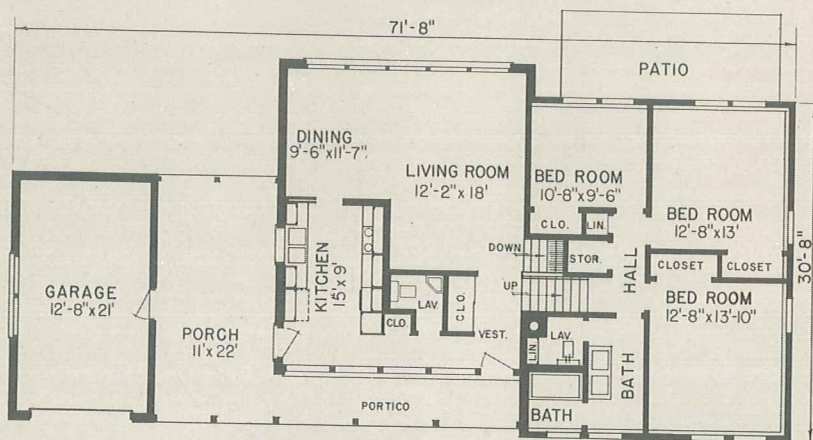
N P S 700

FEATURES: An exciting compartmented bath, a powder room close to both kitchen and front entrance . . . Big, roomy corridor kitchen . . . window wall all across the back of the living-dining area . . . Three big bedrooms . . . Sheltered portico between garage and entry . . . Exterior has solid traditional look.

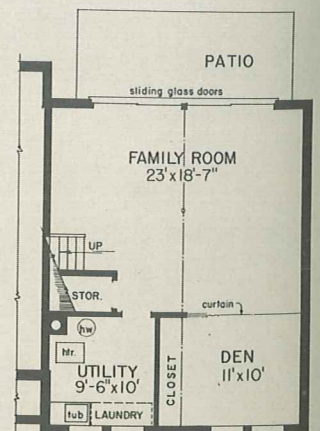
Living Area

Main and Upper Levels — 1,307 sq. ft.

Lower Level — 705 sq. ft.

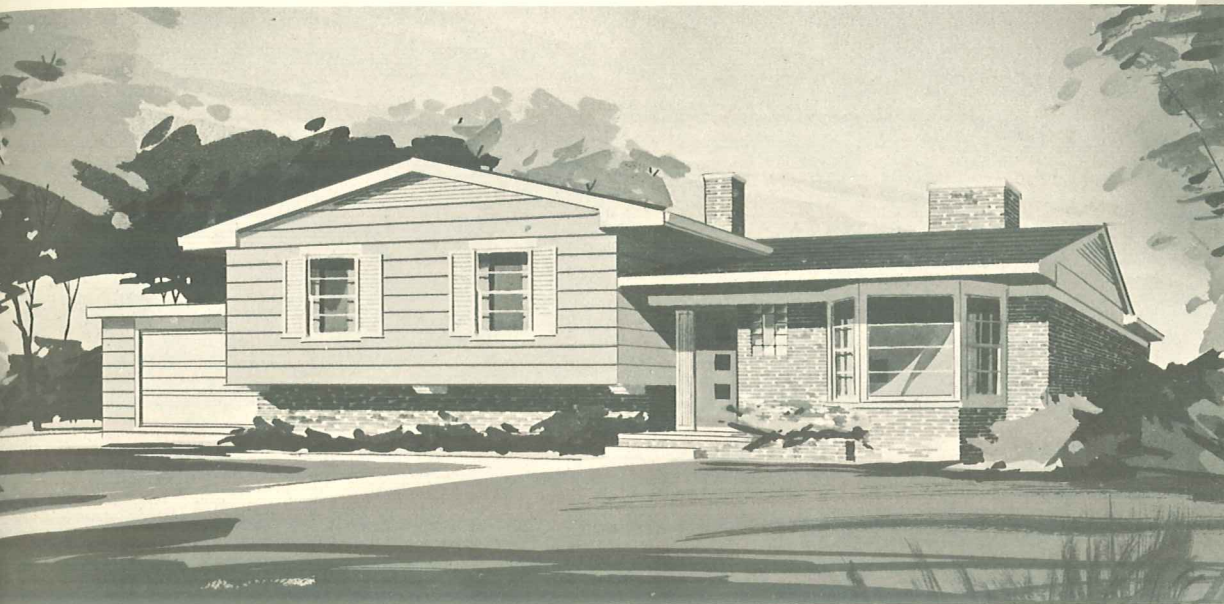


MAIN AND UPPER LEVELS



LOWER LEVEL

Blueprint plans are available for all homes illustrated in this book either as shown or in reverse position, if desired.



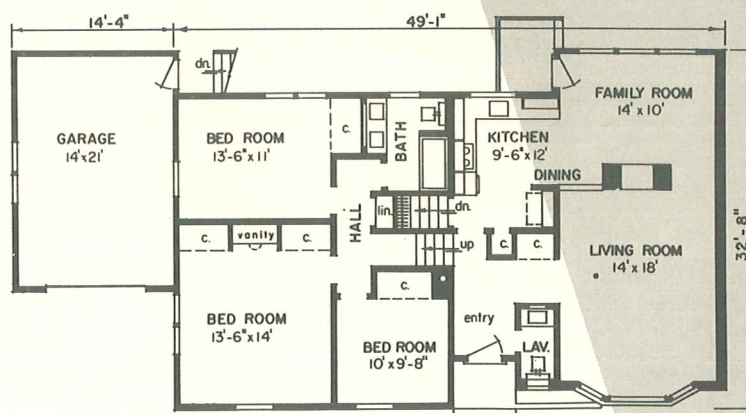
N P S 701

Living Area

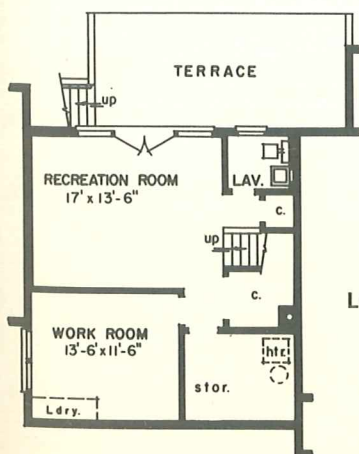
Main and Upper Levels — 1,408 sq. ft.

Lower Level — 656 sq. ft.

FEATURES: Outdoor living and family activities are highlights of this beautiful split-level home . . . Recreation room, terrace and family room are all included in this plan . . . Two-way fireplace serves both family and living rooms . . . Built-in vanity and “his” and “her” closets in master bedroom.

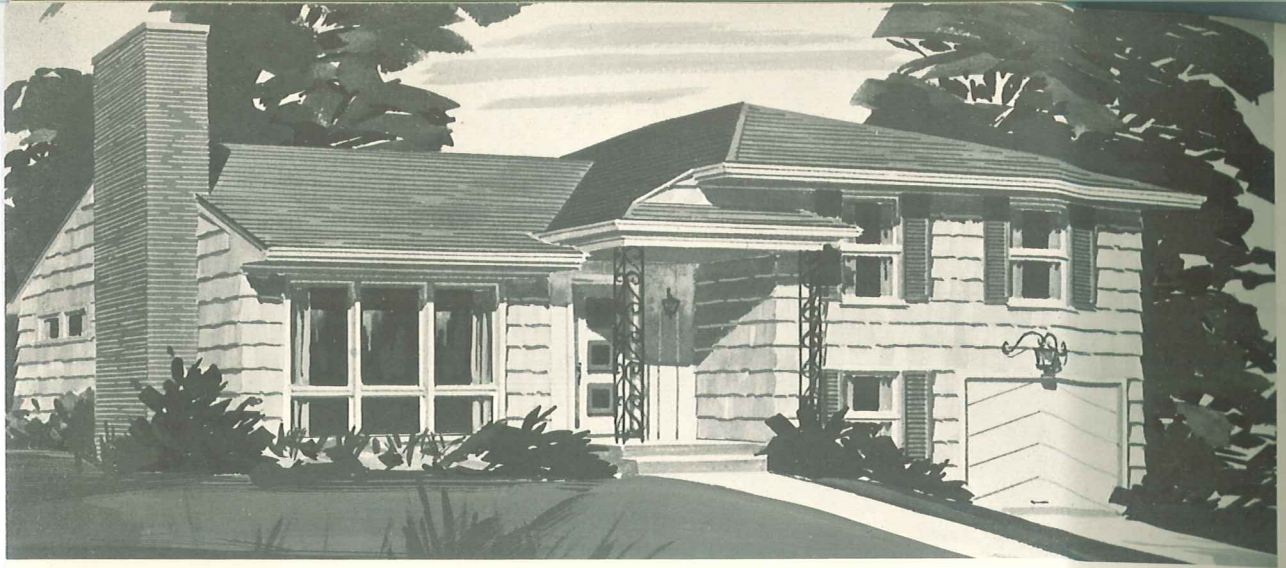


MAIN AND UPPER LEVELS



LOWER LEVEL

Blueprint plans are available for all homes illustrated in this book either as shown or in reverse position, if desired.



N P S

702

Living Area . . . Main and Upper Levels — 1,369 sq. ft. | Basement Level — 702 sq. ft.
 Recreation Room and Garage Level — 667 sq. ft.



N P S

703

Living Area . . . Main and Upper Levels — 1,442 sq. ft.
 Lower Level — 638 sq. ft.



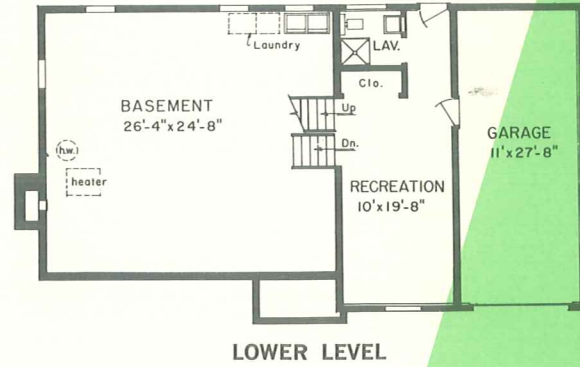
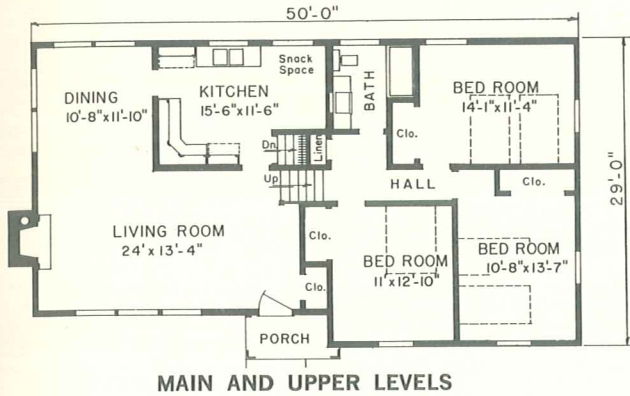
N P S

704

Living Area . . . Main and Upper Levels — 1,480 sq. ft.
 Lower Level — 715 sq. ft.

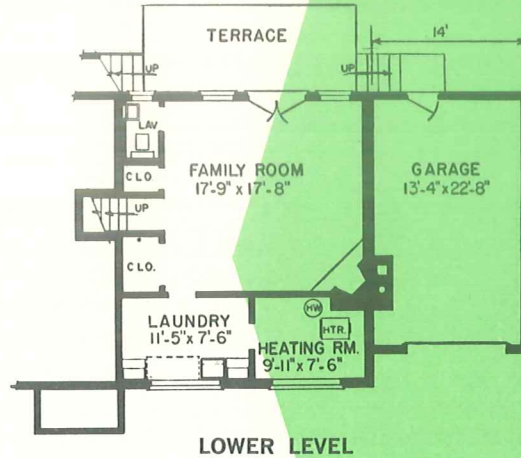
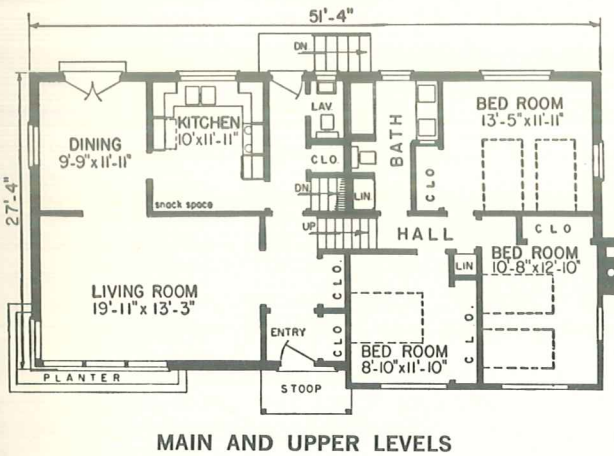
FEATURES: A recreation room and bath in the lower level adds to the over-all comfort of this three bedroom multi-level design . . . Living-dining area is

spacious, kitchen includes snack space . . . Natural fireplace . . . Direct access from garage to house is a real advantage in bad weather.



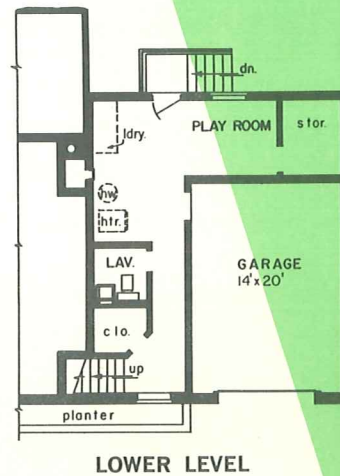
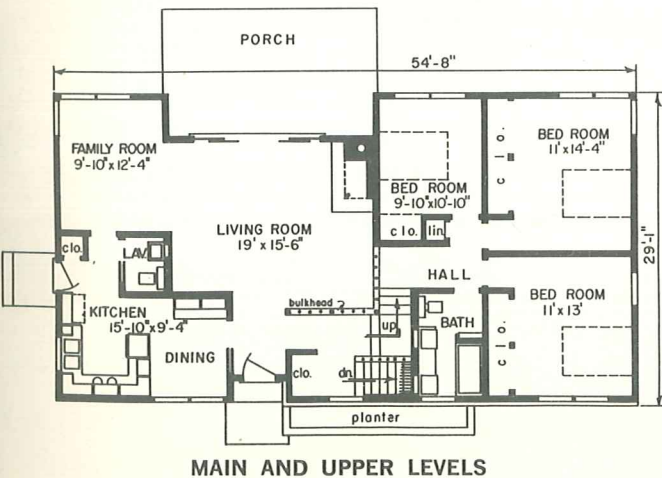
FEATURES: Lower level family room, with corner fireplace and double doors opening to a terrace . . . Bath space is generous — with half bath at rear entry,

another for exclusive use from family room or laundry, a full bath with twin lavatories at the bedroom level.



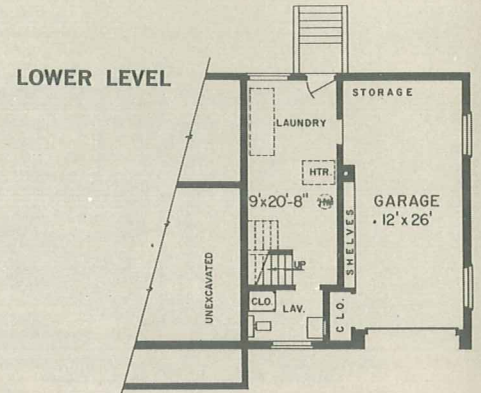
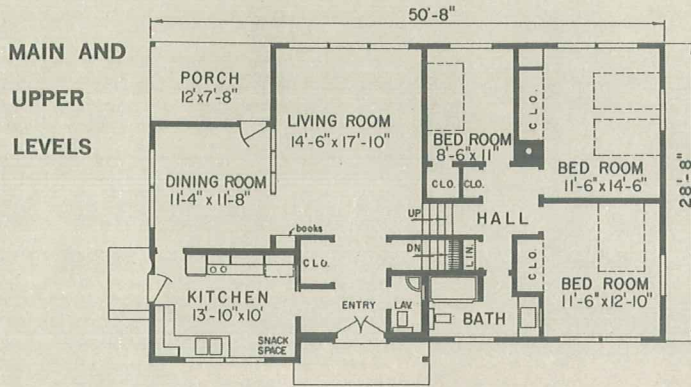
FEATURES: A practical home for sloping terrain . . . Beautifully planned kitchen-dining area and family room . . . Garden view living room and porch is an

attractive indoor-outdoor living arrangement . . . Corner fireplace . . . Playroom and lavatory in lower level



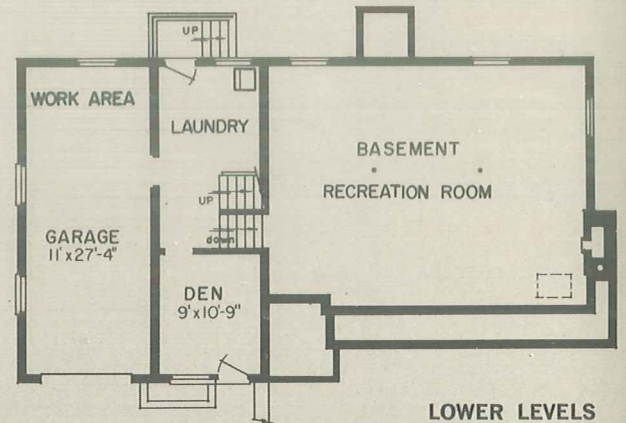
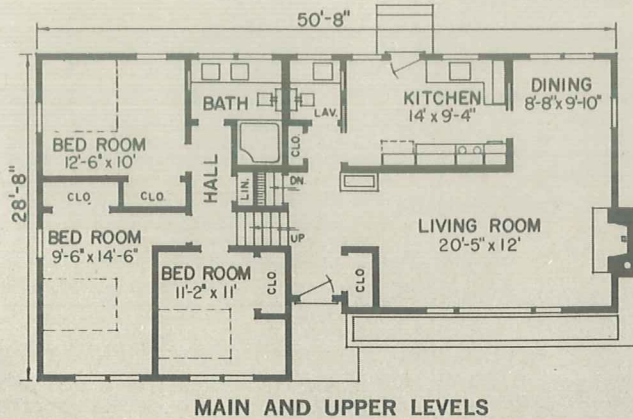
FEATURES: Exceptionally modern exterior and easy-to-live-in interior . . . In the lower level are laundry facilities, lavatory and garage with plenty of storage space . . . Main level lavatory and vanity bath in

upper level are back-to-back for economy . . . Built-in oven and range . . . Snack space in kitchen.



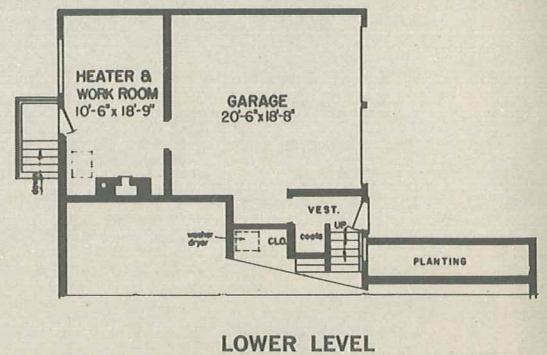
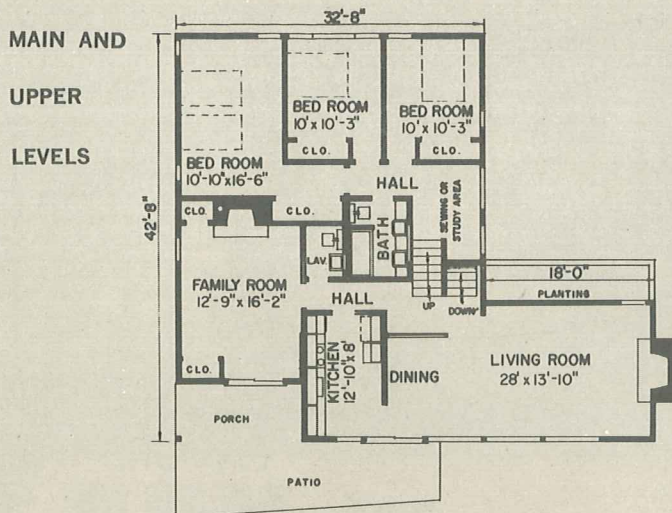
FEATURES: This split-level design conserves every possible square inch of space . . . Kitchen is planned for convenience and serving for either breakfast nook

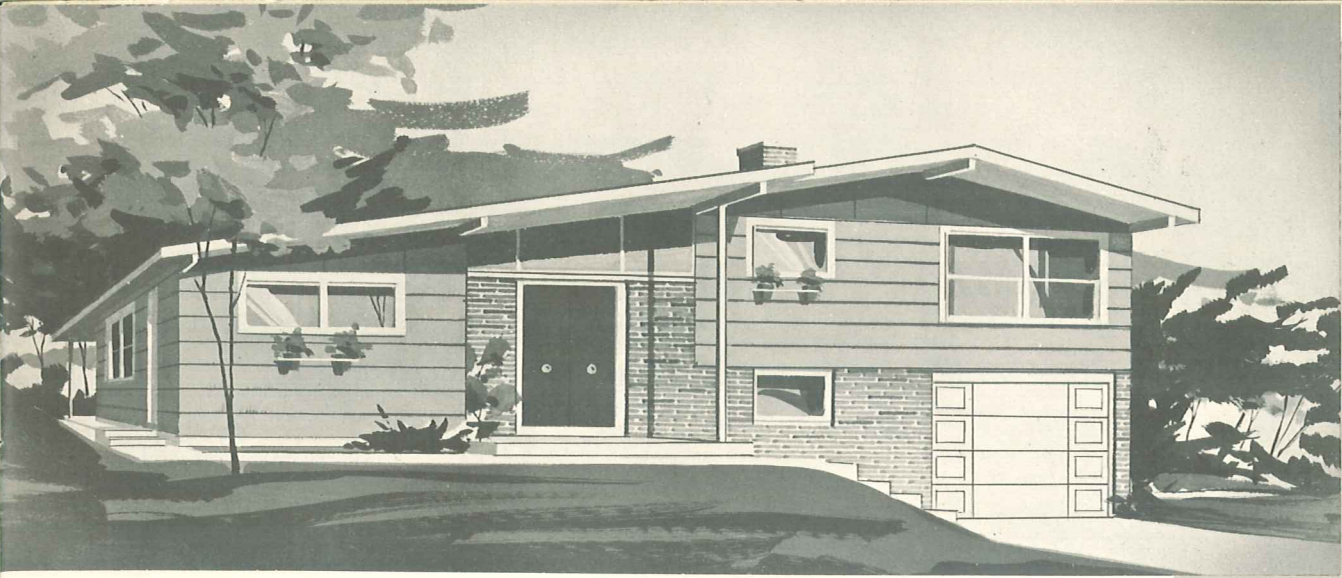
or dining room requires the fewest possible steps . . . Den at garage level could function as fourth bedroom . . . Natural fireplace . . . Work area in garage.



FEATURES: Separate living rooms for youngsters and adults . . . Kitchen pass-through to the younger set's living room . . . Bath and a half economically placed

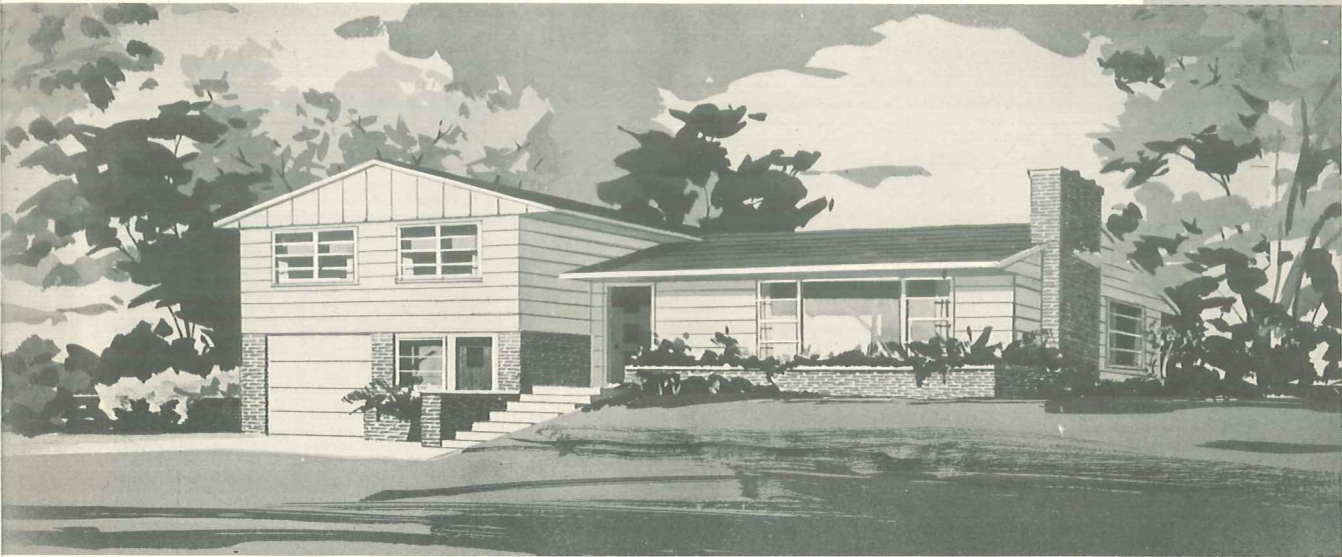
next to each other at different levels . . . Sewing corner or study at end of upper hallway . . . Natural fireplace in both family and living rooms.





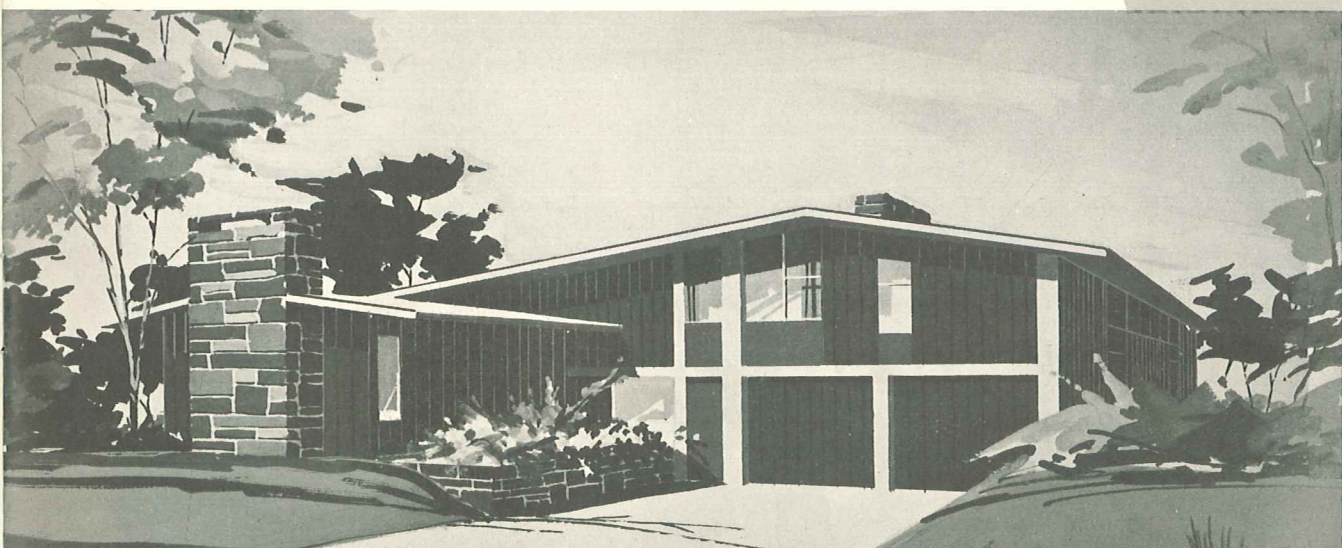
N P S 705

Living Area . . . Main and Upper Levels — 1,381 sq. ft.
Lower Level and Garage — 646 sq. ft.



N P S 706

Living Area . . . Main and Upper Levels — 1,280 sq. ft.
Garage Level — 630 sq. ft. Basement — 650 sq. ft.



N P S 707

Living Area . . . Main and Upper Levels — 1,497 sq. ft.
Lower Level (Incl. Garage) — 685 sq. ft.



N P S 708

Living Area . . . Main and Upper Levels — 1,648 sq. ft.

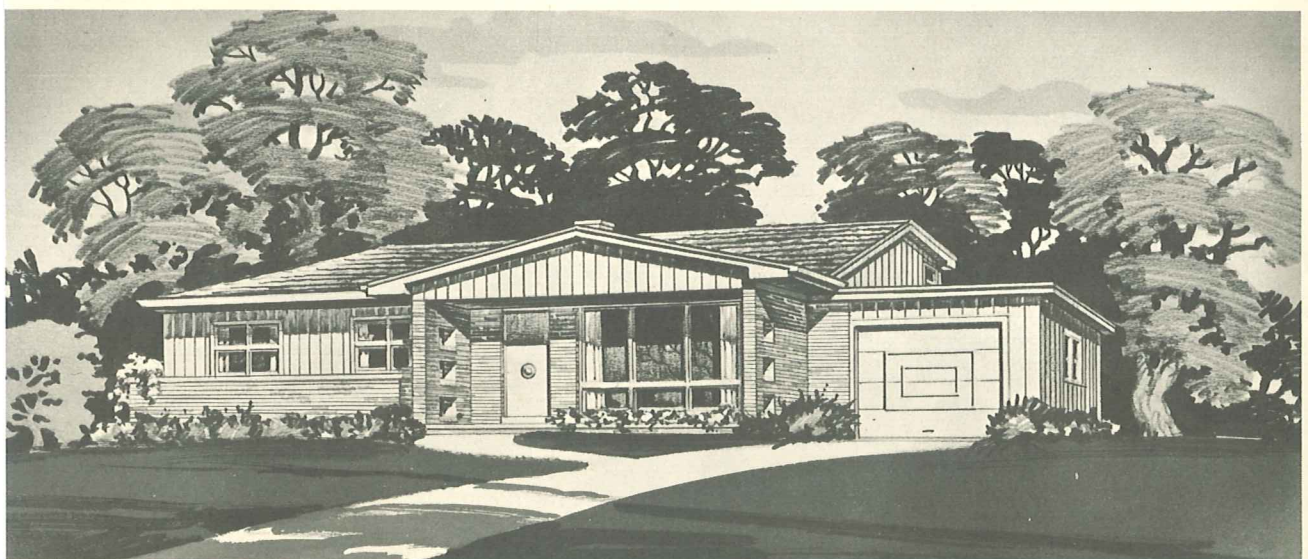
Lower Level — 829 sq. ft.



N P S 709

Living Area . . . Main and Upper Levels — 1,195 sq. ft.

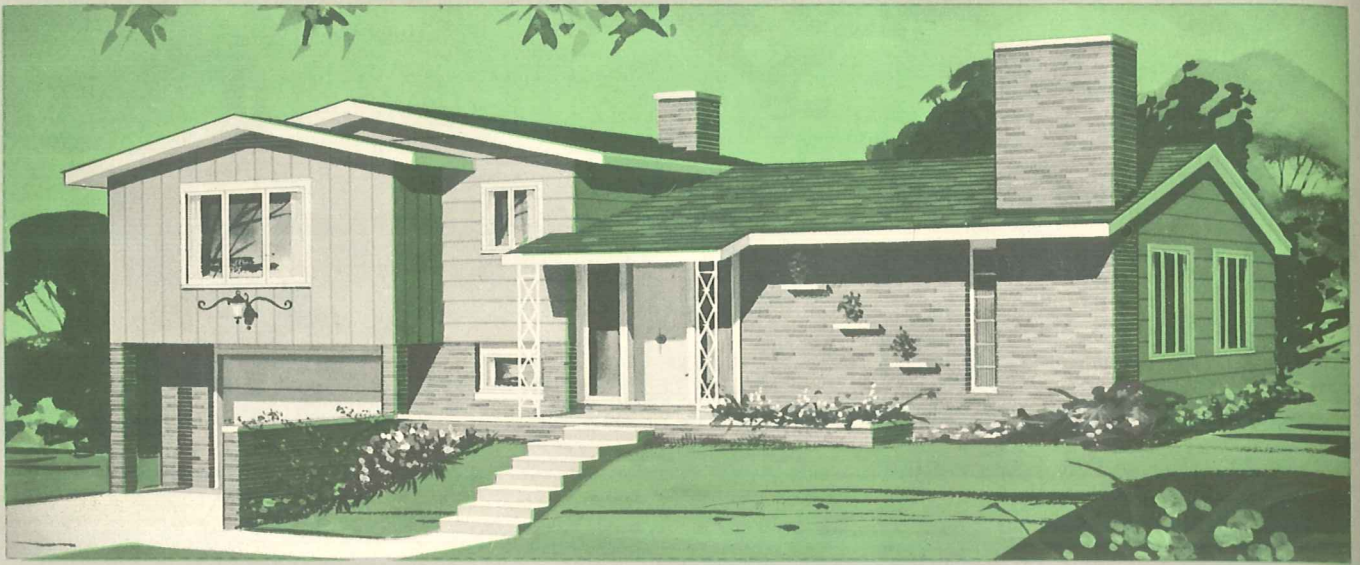
Lower Level — 606 sq. ft.



N P S 710

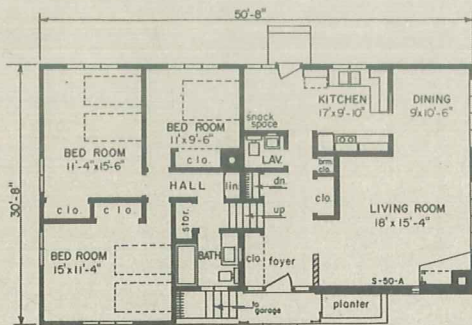
Living Area . . . Main and Upper Levels — 1,385 sq. ft.

Lower Level — 739 sq. ft.

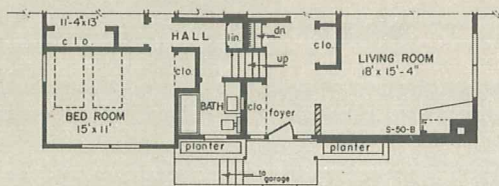


DESIGN A

N P S 711



MAIN AND UPPER LEVELS — DESIGN A



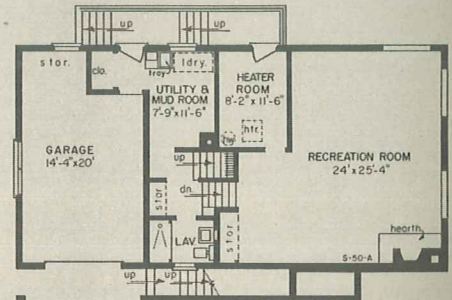
MAIN AND UPPER LEVELS — DESIGN B

FEATURES: Choice of two exteriors — contemporary or conventional design . . . On the upper level are three bedrooms and a bath with the kitchen, dining area, living room and lavatory being included in the main level . . . A garage, mud room with laundry, second bath and recreation room are found in the lower levels.

LOWER LEVELS

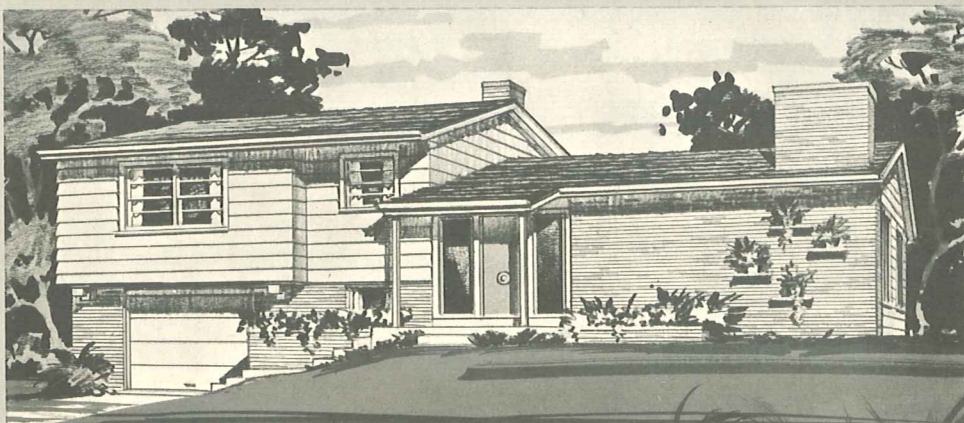
DESIGN A

AND B



When ordering blueprint plans, please specify

Design A or Design B



Living Area
Main and Upper Levels
Elevation A — 1,422 sq. ft.
Elevation B — 1,375 sq. ft.
Garage Level — 630 sq. ft.
Recreation Level - 735 sq. ft.

DESIGN B

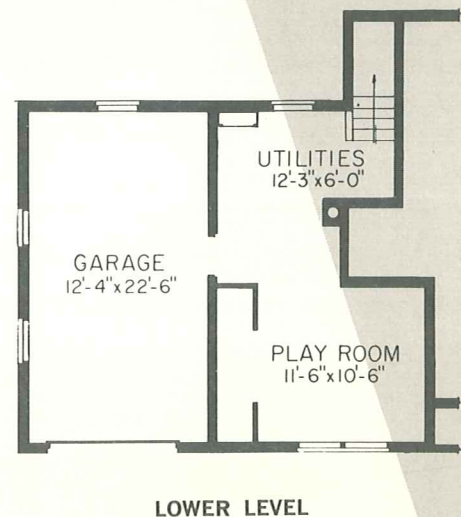
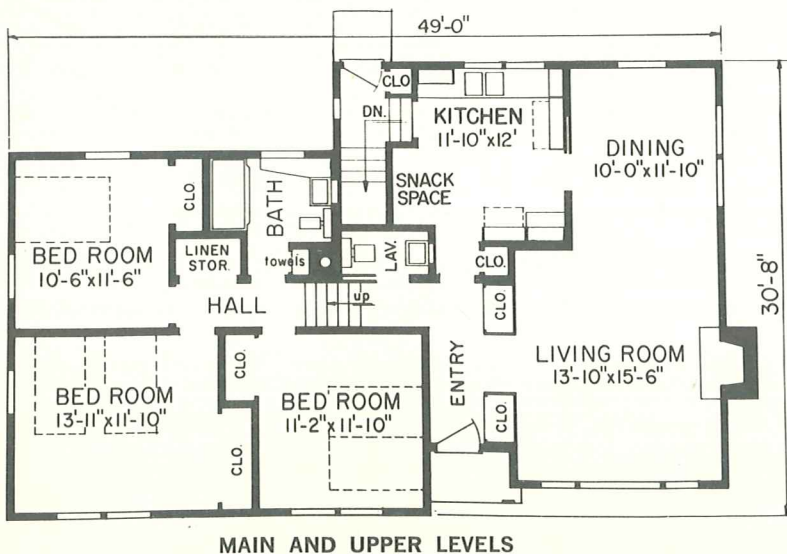


N P S 712

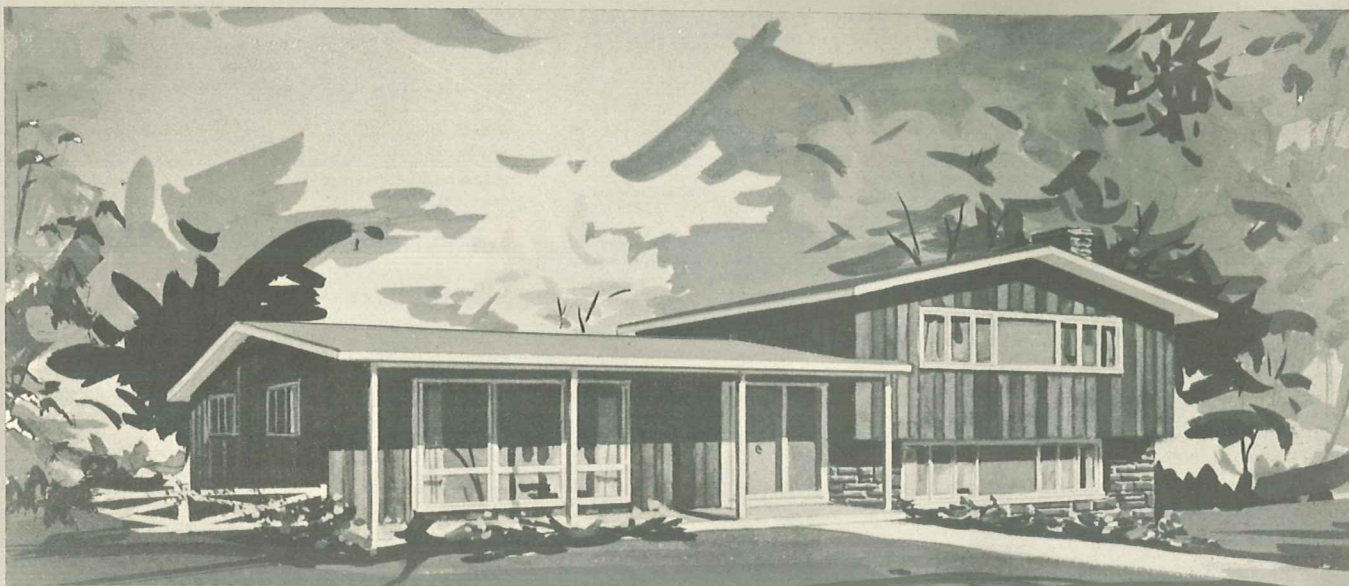
Living Area . . . Main and Upper Levels — 1,309 sq. ft.

Lower Level (Incl. Garage) — 647 sq. ft.

FEATURES: Unusually attractive and practical . . . Living-dining area, kitchen and powder room on ground level . . . Three bedrooms and bath on upper level . . . Garage, space for utilities and laundry, storage, and playroom on lower level . . . Note twin closets in entry hall, closet adjacent to kitchen, large linen storage.



Blueprint plans are available for all home designs illustrated, either as shown or in reverse position.



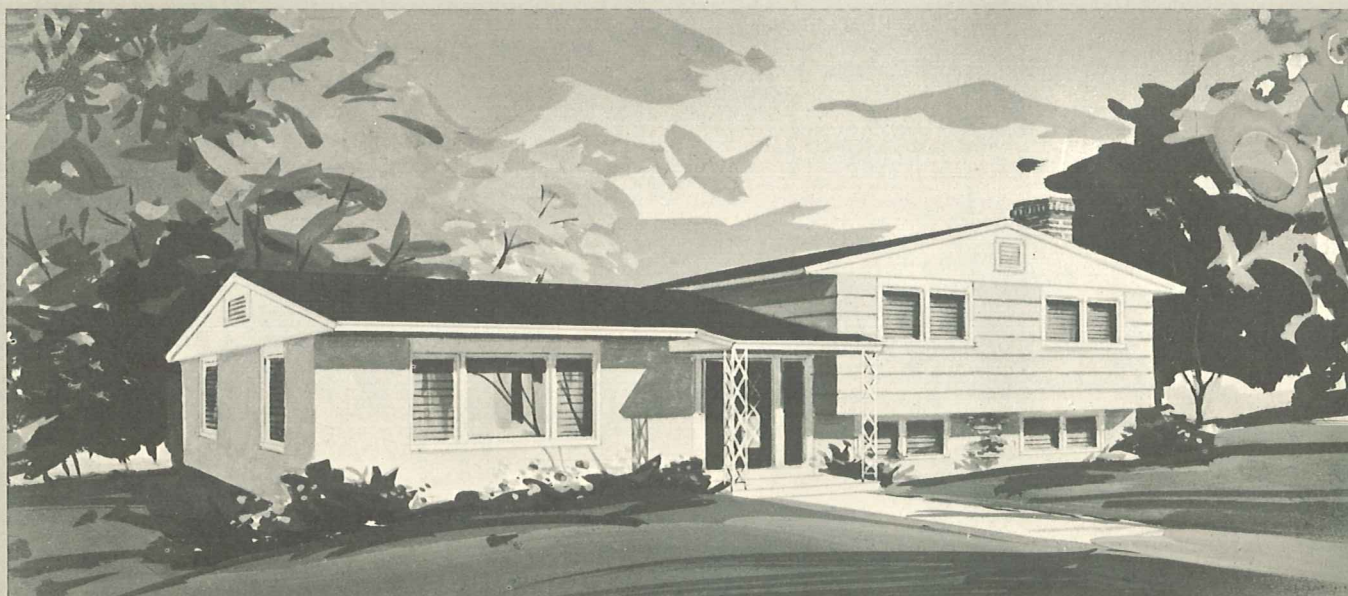
DESIGN B

Living Area . . . Main and Upper Levels — 1,391 sq. ft.

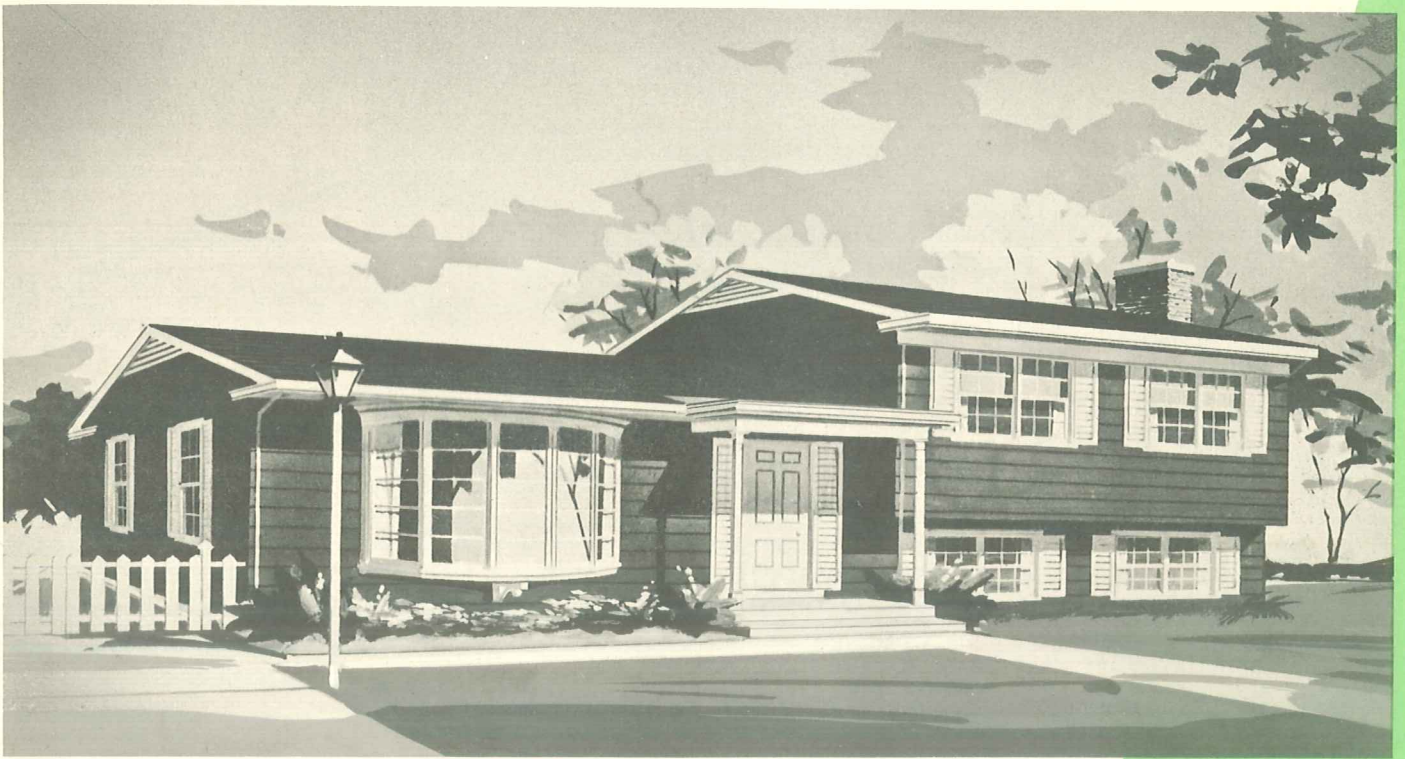
Lower Level — 601 sq. ft.

FEATURES: This attractive tri-level design ideally provides division of the home into various zones . . . Lower level for recreation, informal entertaining and family group activities . . . Ground floor for busiest

area — kitchen, dining room, living room and half bath . . . Three bedrooms and bath on upper or sleeping level.



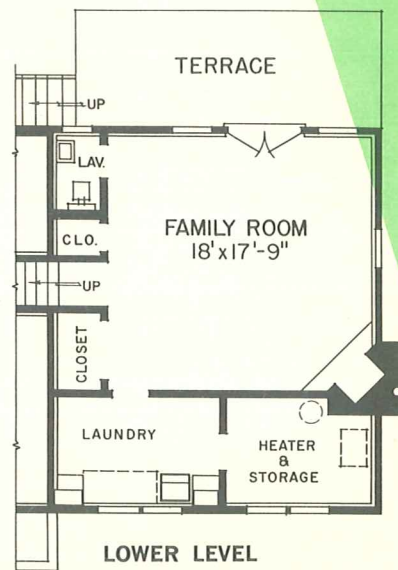
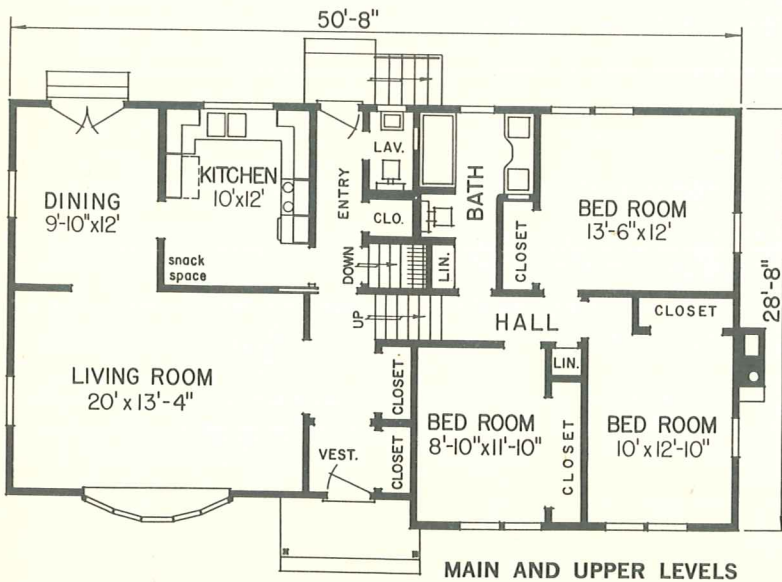
DESIGN C — HORIZONTAL SIDING AND STUCCO ON CONCRETE BLOCKS



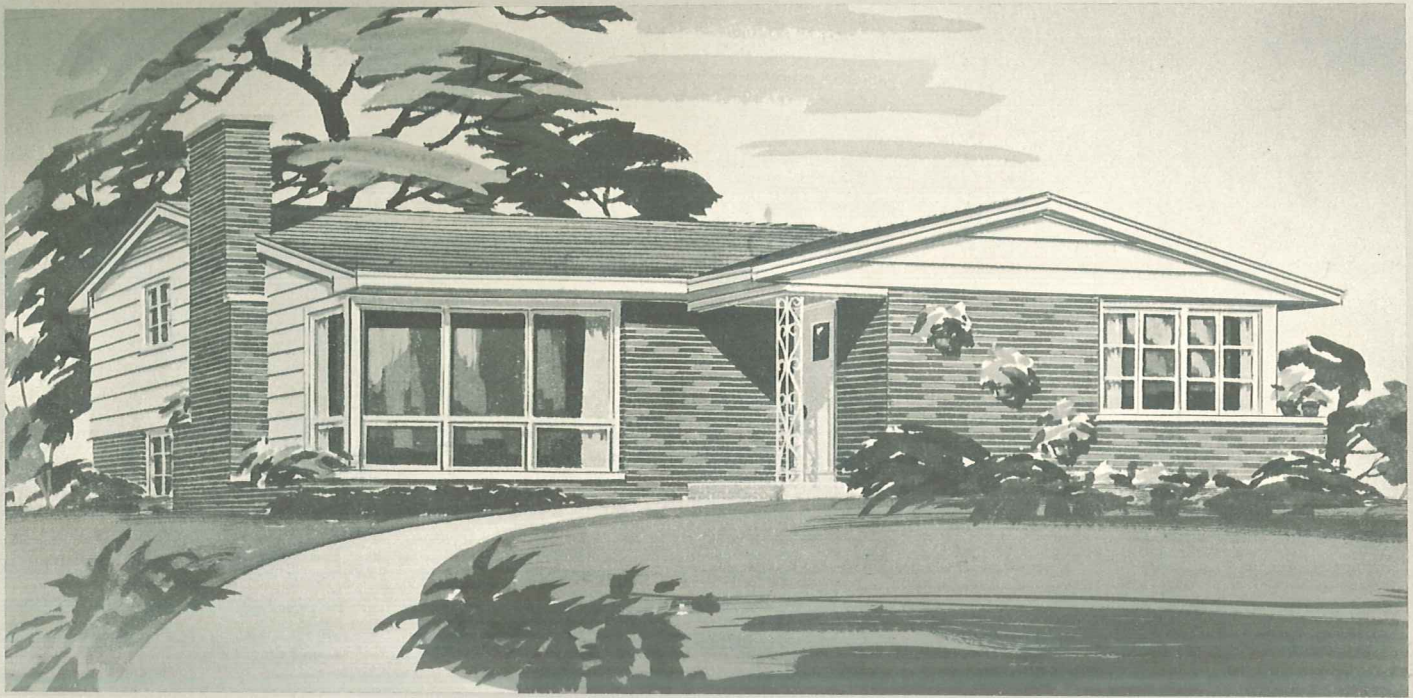
DESIGN A

N P S 713

When ordering blueprint plans, please specify design desired.



Blueprint plans are available for all home designs illustrated, either as shown or in reverse position.

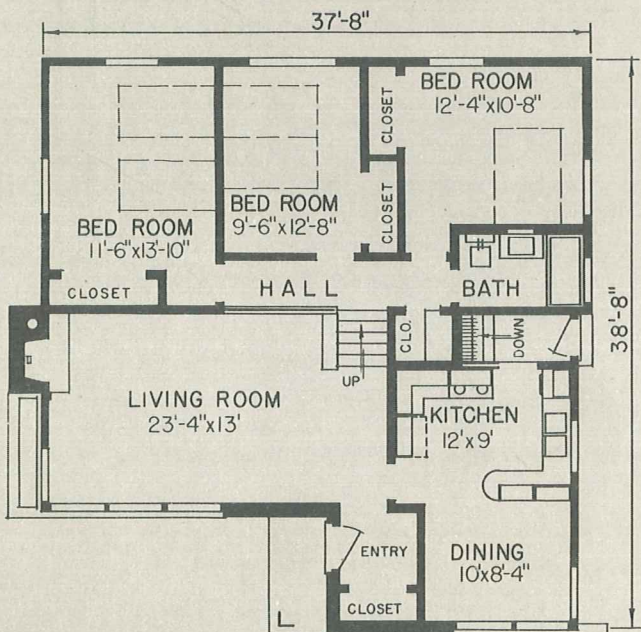


N P S 714

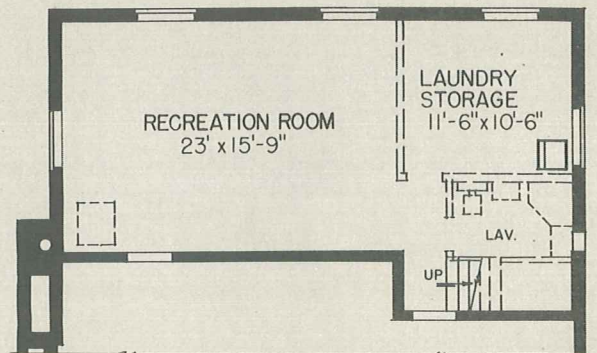
Living Area . . . Main and Upper Levels — 1,283 sq. ft.

Lower Level — 674 sq. ft.

FEATURES: This three bedroom design is a good example of practical multi-level planning . . . Recreation room, laundry and storage area and a lavatory are included in the lower level . . . Main and upper levels provide spacious living area . . . Natural fireplace . . . Exterior is ranch-like in appearance.



MAIN AND UPPER LEVELS



LOWER LEVEL

Blueprint plans are available for all home designs illustrated, either as shown or in reverse position.

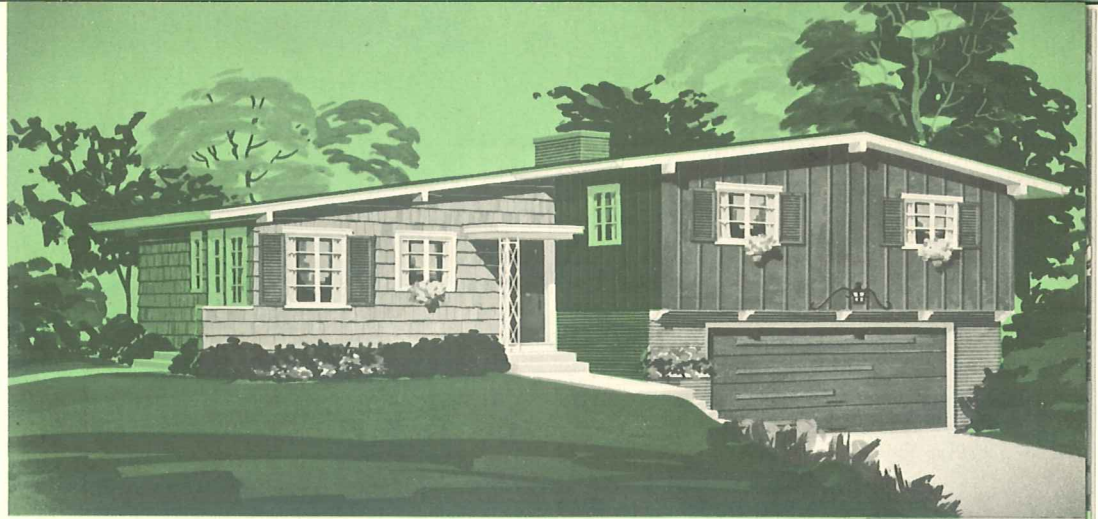
Living Area

Main and Upper

Levels — 1,433 sq. ft.

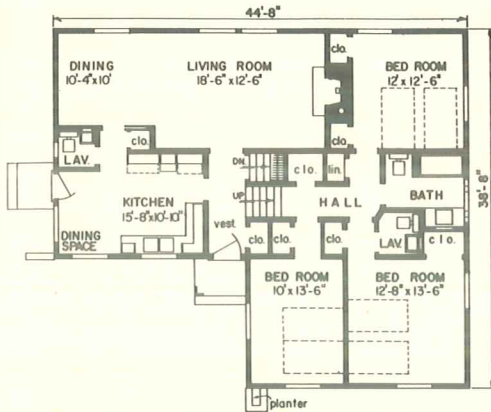
Lower Level — 615 sq. ft.

Garage Level — 793 sq. ft.

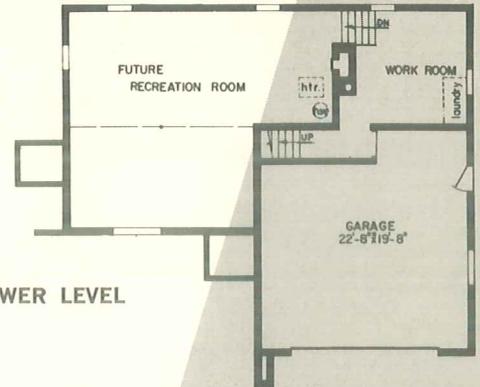


FEATURES: Perfect for a sloping site . . . Three big bedrooms, super closet space and a bath and a half on upper level . . . A well placed lavatory, dining

space in kitchen and a large living-dining area are located on the main level . . . Contrasting colors and materials are used effectively on exterior.



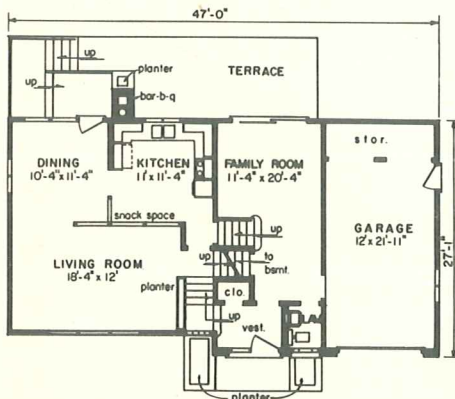
MAIN AND UPPER LEVELS



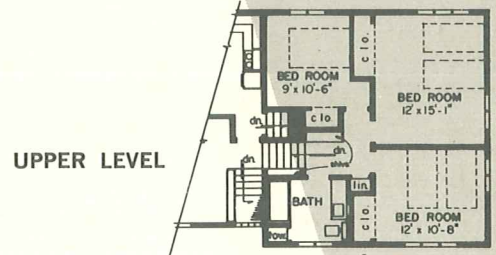
LOWER LEVEL

FEATURES: Family activities and outdoor living set the pattern for this unusual multi-level home . . . Terrace with barbecue and adjoining family room

are well separated from the main and upper levels of the house . . . Comfort and roominess are other delightful characteristics of this three bedroom design.



MAIN AND LOWER LEVELS



UPPER LEVEL



Living Area

Main and Lower Levels
1,216 sq. ft.

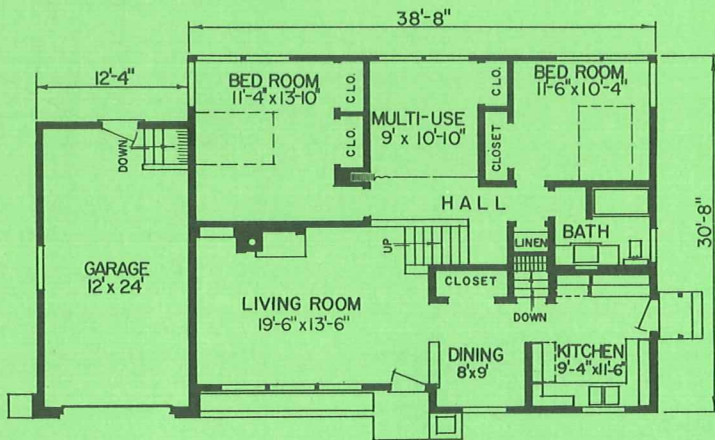
Upper Level — 670 sq. ft.



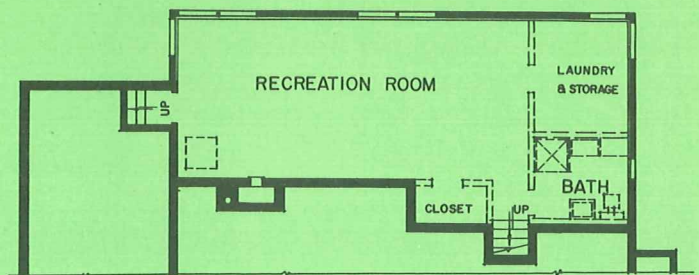
N P S 717

Living Area . . . Main and Upper Levels — 1,135 sq. ft.
Lower Level — 642 sq. ft.

FEATURES: Just a few steps up from the main level, with its kitchen, dining and living rooms, are two bedrooms and a multi-use room which can serve as a third bedroom . . . In the lower level are recreation room, laundry and storage and a bath . . . Natural fireplace . . . Attached garage has entry to house.



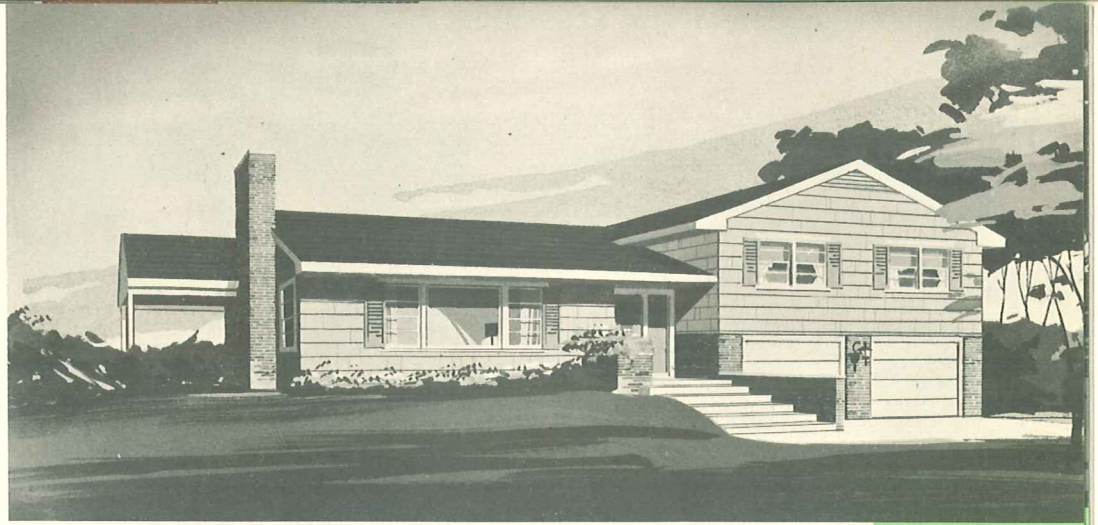
MAIN AND UPPER LEVELS



LOWER LEVEL

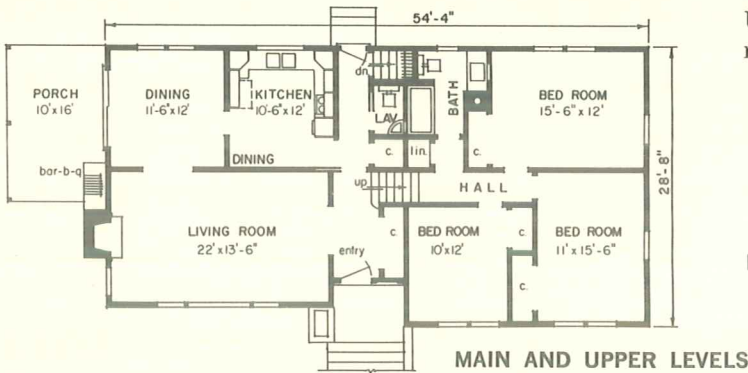
Blueprint plans are available for all home designs illustrated, either as shown or in reverse position.

N P S 718

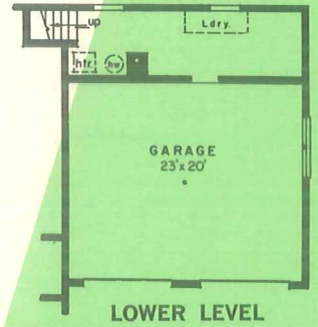


FEATURES: The clean, simple exterior complements the modern living plan of this design . . . Two car

garage is located directly under the three bedroom upper level . . . Barbecue makes the porch an inviting outdoor living area the entire family will enjoy . . . U-kitchen with dining space . . . Separate dining room.

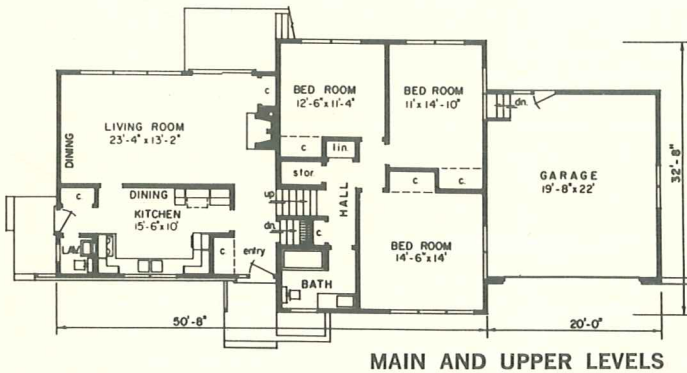


Living Area . . .
 Main and Upper Levels
 — 1,494 sq. ft.
 Lower Level — 687 sq. ft.

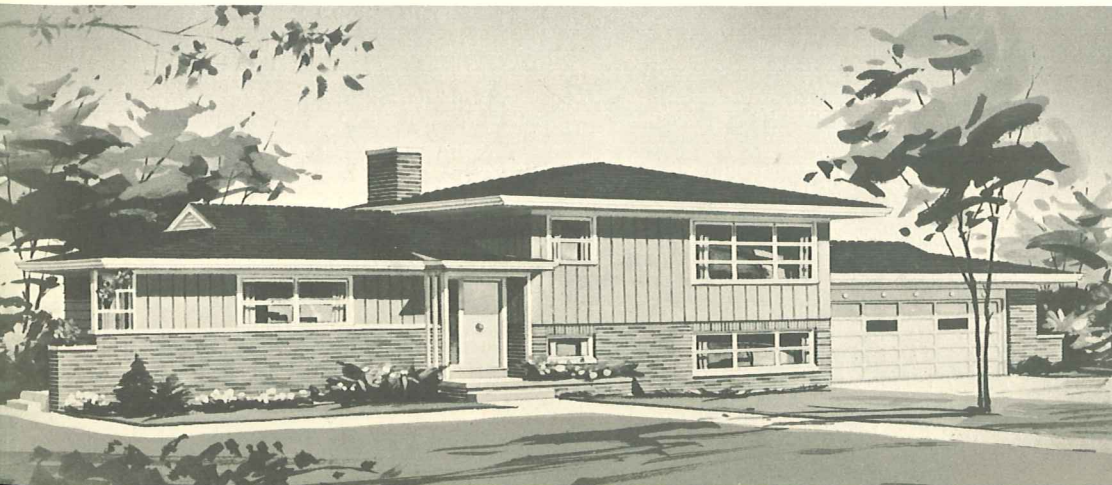
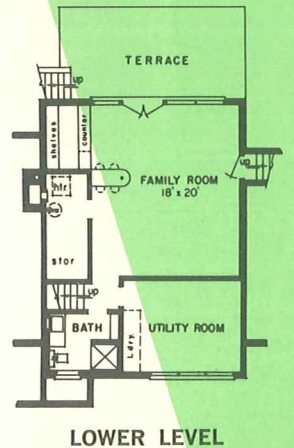


FEATURES: Distinctive—both inside and out . . . Beautifully planned kitchen, dining area and living

room . . . Lavatory convenient to kitchen and side entrance . . . Lower level family room and adjacent terrace is excellent for informal entertaining and family activities . . . Vanity bath in both lower and upper levels.



Living Area . . .
 Main and Upper Levels
 — 1,442 sq. ft.
 Lower Level — 812 sq. ft.



N P S 719



Living Area

Main and Upper Levels

1,196 sq. ft.

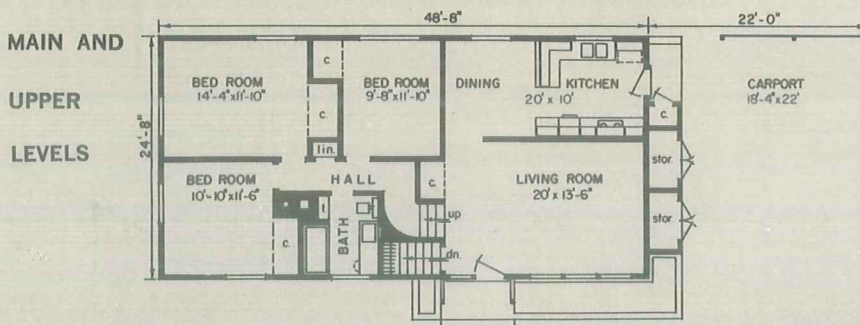
Lower Level — 704 sq. ft.



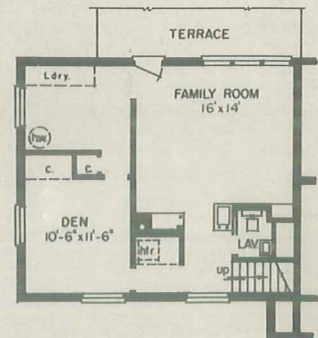
720

FEATURES: Another multi-level home that is perfect for a sloping site . . . Main and upper levels are well planned for comfort . . . The family room, well separated from the quiet areas of the home, is ideally

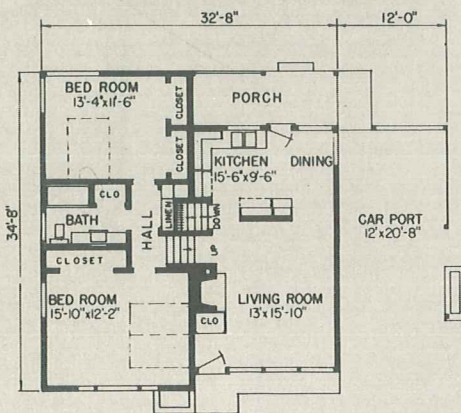
located a half flight down from the kitchen level . . . Den . . . Natural fireplace . . . Terrace off family room.



LOWER LEVEL



MAIN AND UPPER LEVELS

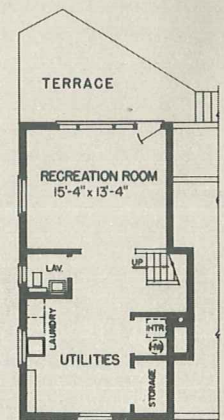


FEATURES: A practical plan for the small family . . . The two bedrooms or quiet area is sharply separated from the active part of the house . . . Main level consists of open planned living room, kitchen, dining area and a rear porch . . . In the lower level are laundry, storage, lavatory, and recreation room .

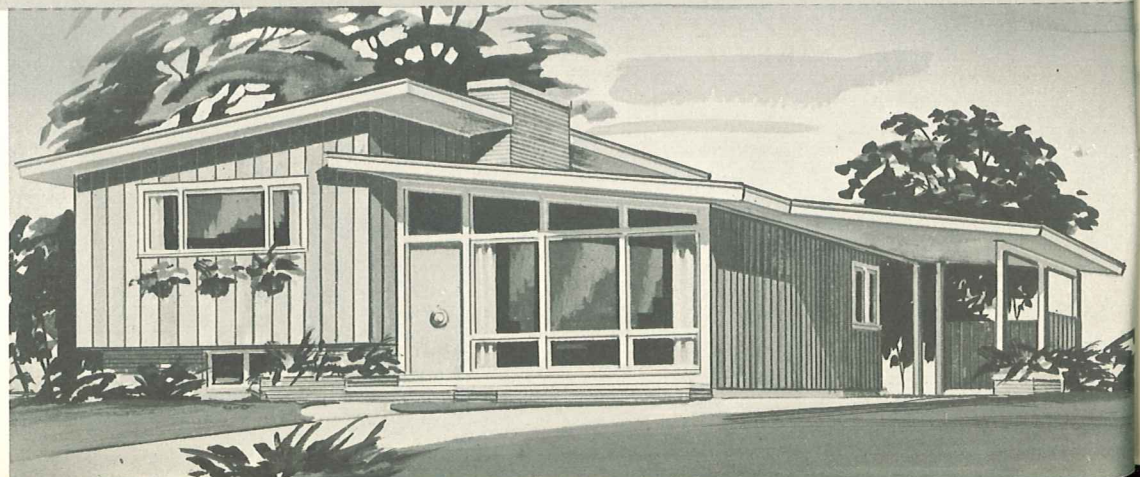
Living Area . . . Main and Upper Levels — 1,000 sq. ft.

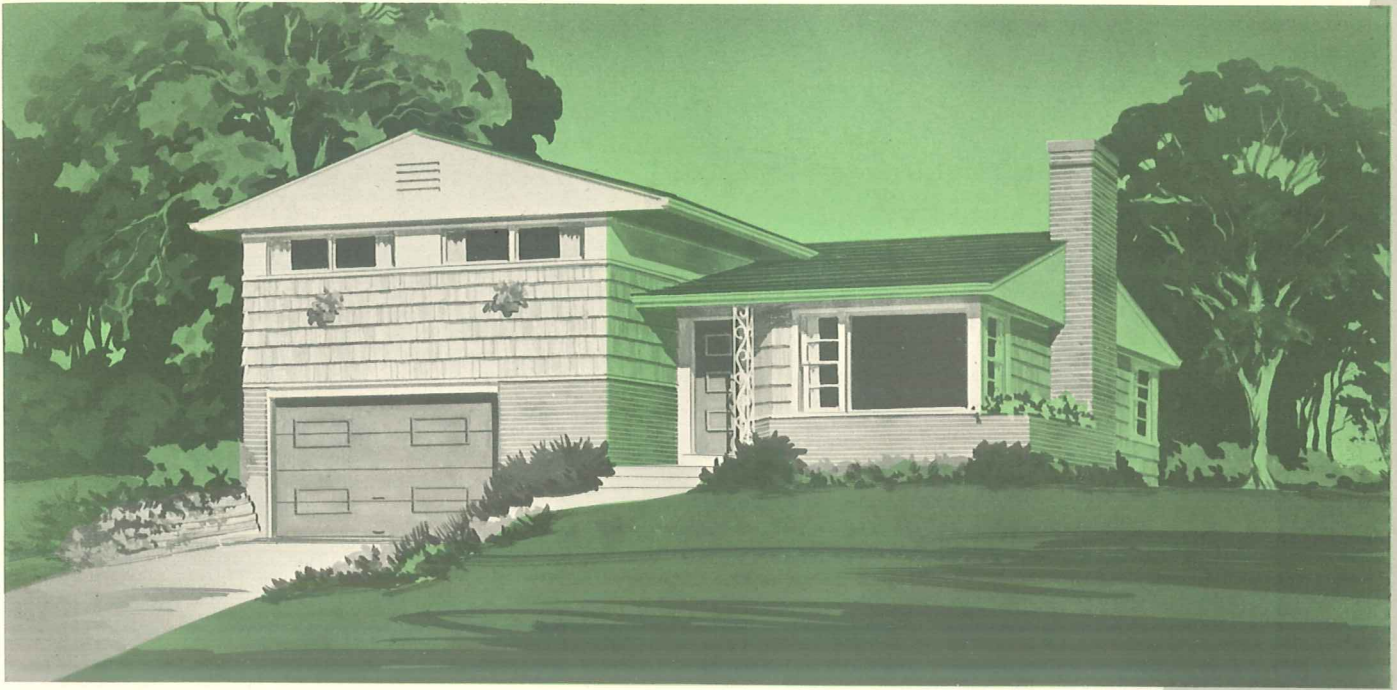
Lower Level — 541 sq. ft.

LOWER LEVEL



721



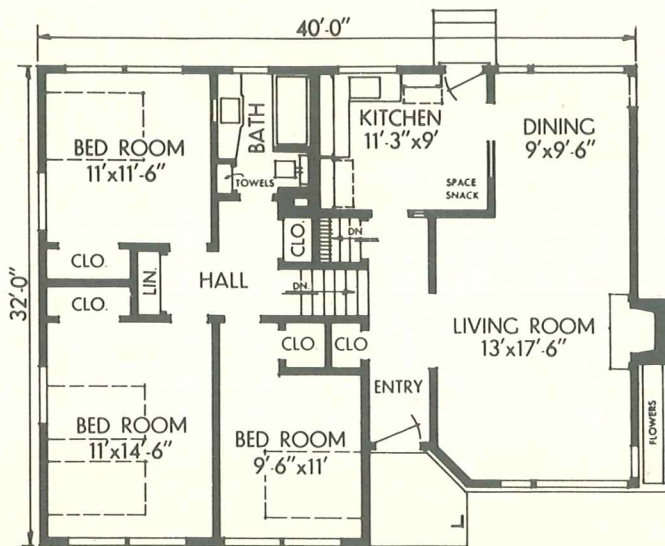


N P S 722

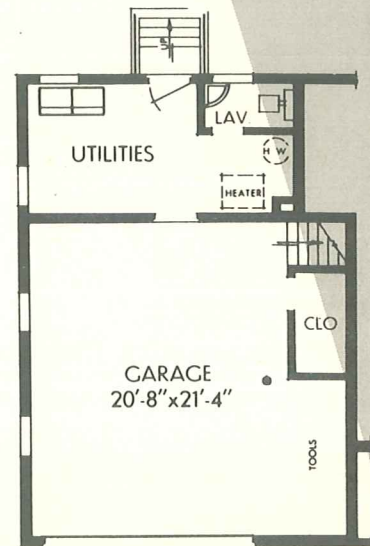
FEATURES: Orderly planned and comfortable interior . . . Vanity bath . . . Three bedrooms . . . Fireplace in living room . . . Lower level consists of large garage, utilities area with access to yard, storage space and lavatory . . . Beautifully handled exterior of shingles and brick.

Living Area . . . Main and Upper Levels — 1,195 sq. ft.

Lower Level — 672 sq. ft.

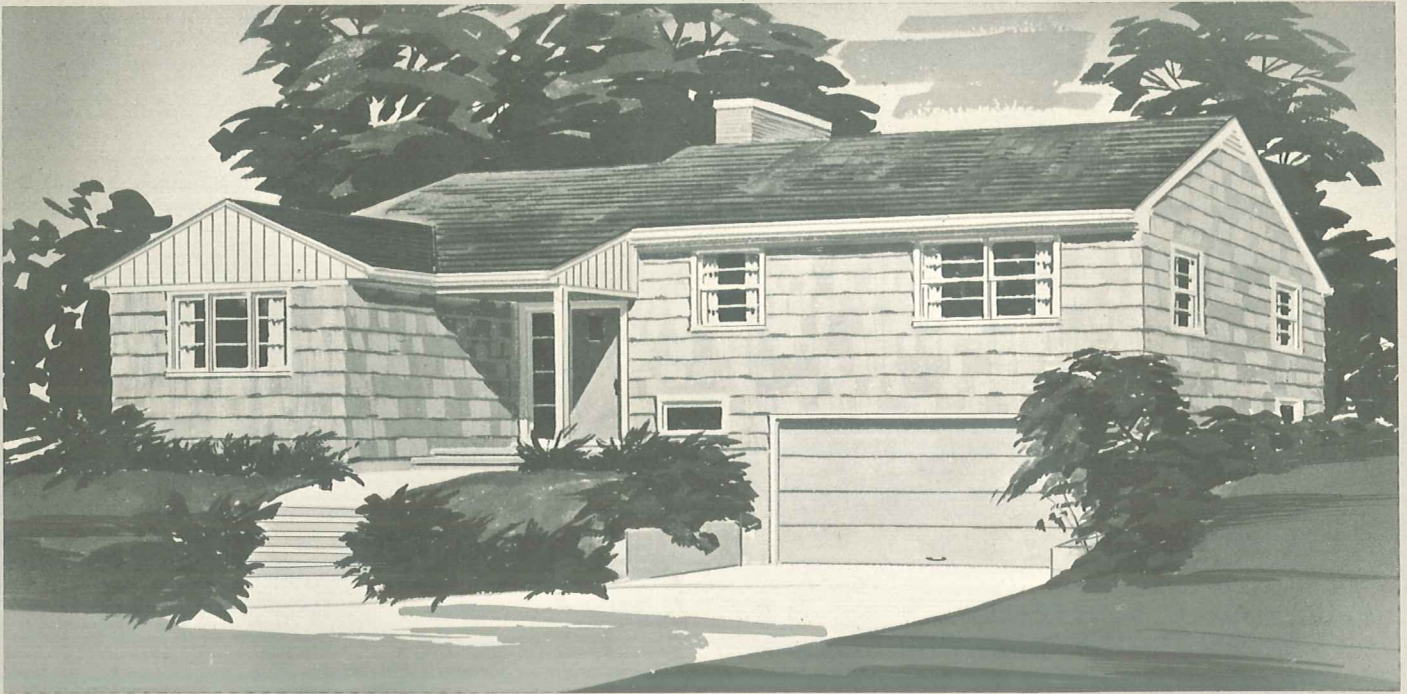


MAIN AND UPPER LEVELS



LOWER LEVEL

Blueprint plans are available for all home designs illustrated, either as shown or in reverse position.

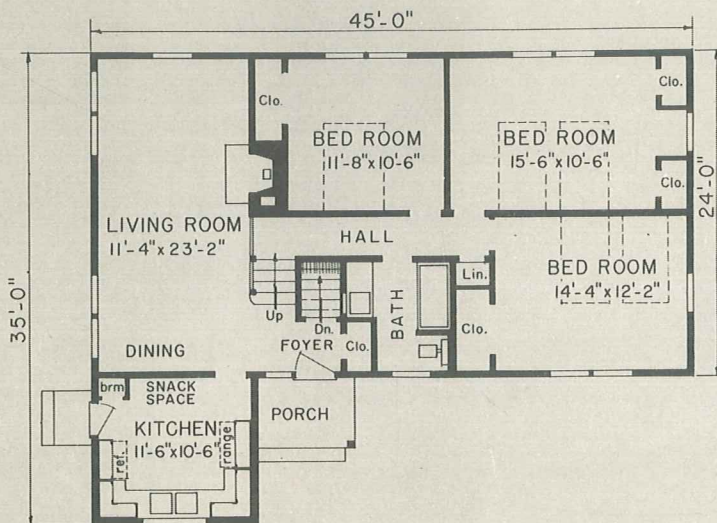


N P S 723

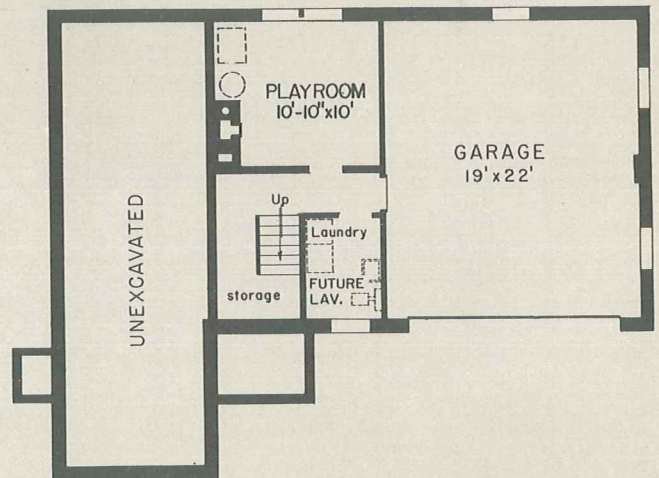
Living Area . . . Main and Upper Levels — 1,218 sq. ft.

Lower Level (Incl. Garage) — 792 sq. ft.

FEATURES: Designed to appeal to the larger family . . . Upper level includes three bedrooms, of which two are of the twin bed size, and vanity bath . . . Down a few steps is the main level with living room, dining area and U-kitchen . . . Natural fireplace . . . Garage, storage and laundry areas are provided on lower level.

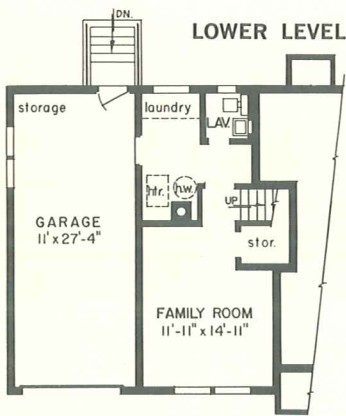


MAIN AND UPPER LEVELS



LOWER LEVEL

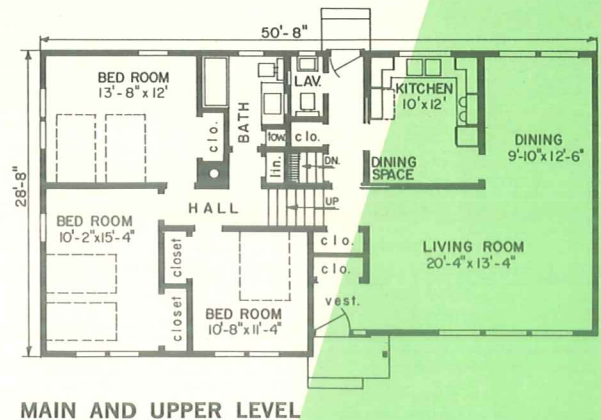
Blueprint plans are available for all home designs illustrated, either as shown or in reverse position.



N P S 724

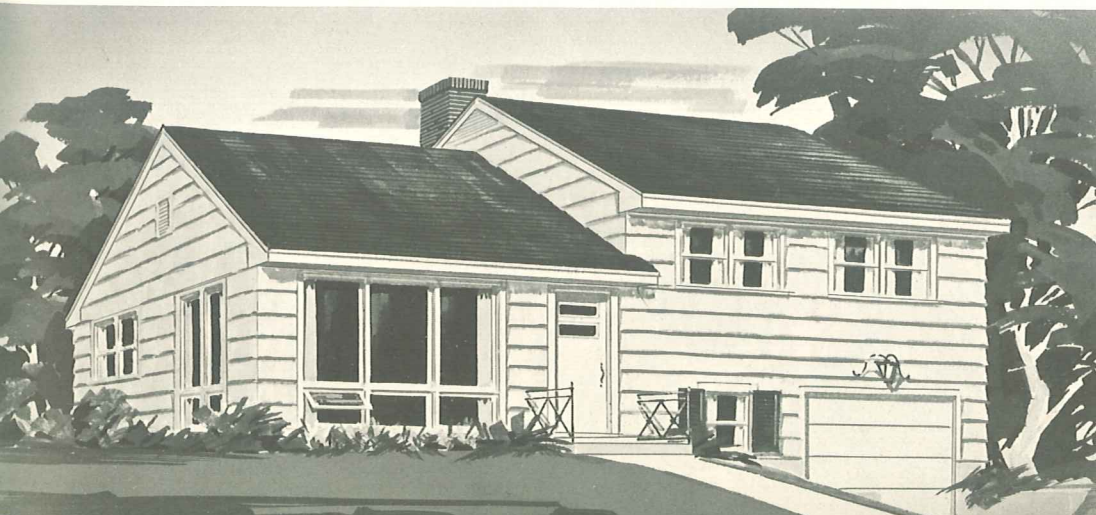
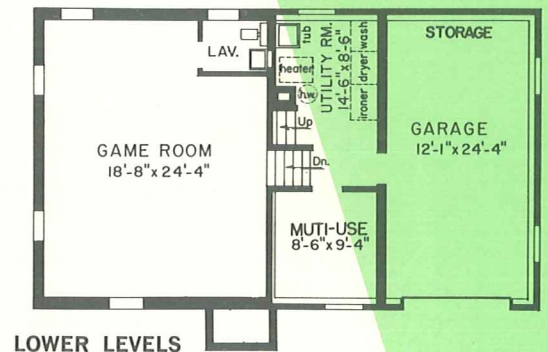
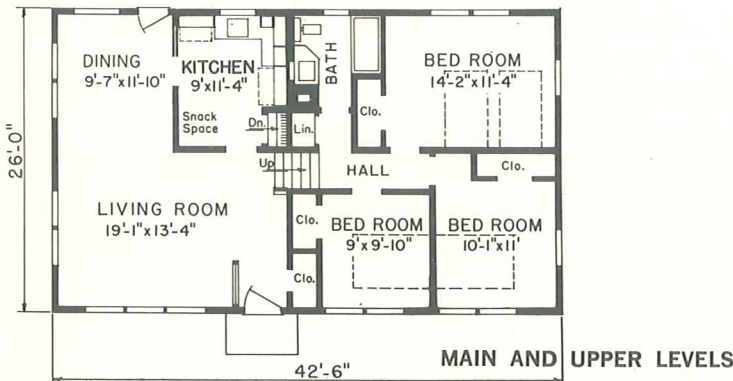
FEATURES: Separate dining room adjacent to kitchen . . . Three bedrooms in the quiet area of the upper level . . . Plenty of closet and storage space . . . A main level lavatory convenient to service entrance with another one serving family room and laundry in lower level . . . Contemporary exterior.

Living Area . . . Main and Upper Levels — 1,395 sq. ft.
Lower Level — 705 sq. ft.



FEATURES: Designed with every member of the family in mind, provides every possible living benefit . . . Game room and lavatory are part of the lower levels

which also include storage area, utility room and garage . . . On the main and upper levels are living-dining area, kitchen, three bedrooms and bath.



N P S 725

Living Area
Main and Upper Levels — 1,105 sq. ft.
Garage Level — 598 sq. ft.
Game Rm. Level — 507 sq. ft.

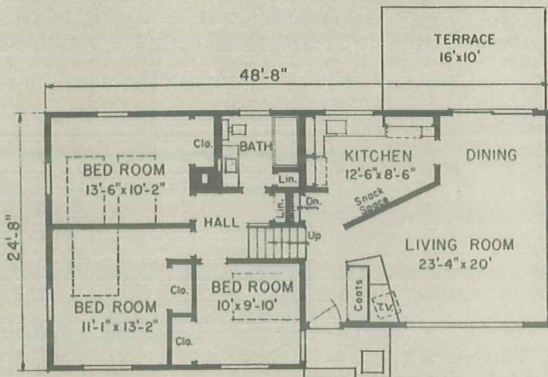


Living Area
Main and Upper
Levels — 1,104 sq. ft.
Lower Level
(Incl. Garage) — 598 sq. ft.

N P S 726

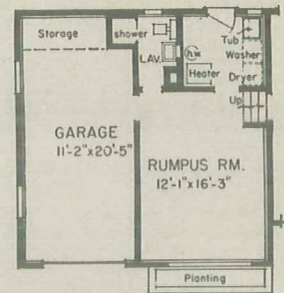
FEATURES: Each level of this home was designed to give you the utmost in comfort for your building dollars . . . Note the TV corner and unusual ar-

range of living room and dining area . . . Kitchen, too, is different . . . Lower level provides another better living bonus — rumpus room and bath . . . Pleasing exterior.



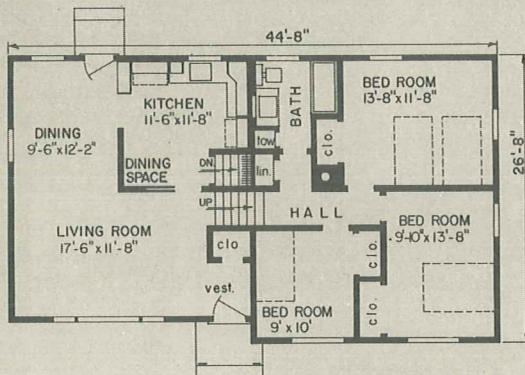
MAIN AND UPPER LEVELS

LOWER LEVEL

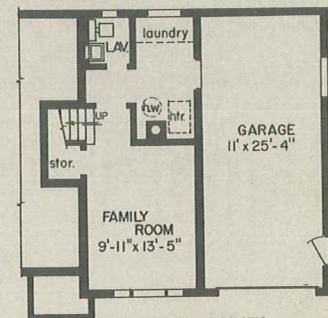


FEATURES: Plan is compact and well designed . . . Kitchen is L-shaped and serving the dining space or

dining room requires just a few steps . . . In the lower level are family room, lavatory, laundry facilities and garage . . . Inside entrance from garage to laundry room is another good idea.



MAIN AND UPPER LEVELS



LOWER LEVEL

N P S 727

Living Area
Main and Upper
Levels — 1,143 sq. ft.
Lower Level — 602 sq. ft.



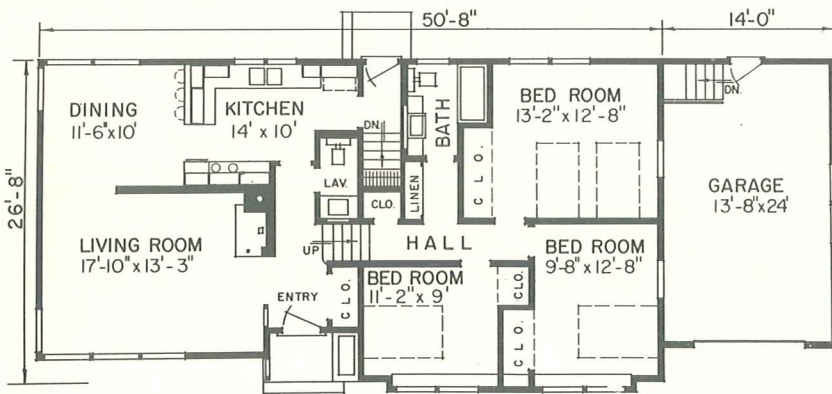


N P S 728

Living Area . . . Main and Upper Levels — 1,280 sq. ft.

Lower Level — 756 sq. ft.

FEATURES: Big, comfortable and beautiful . . . Over 2,000 square feet of well planned living area . . . Loads of closet and storage space . . . Snack bar between kitchen and dining room . . . Lavatory on main level, large vanity bath on upper level . . . Family room and lavatory are in lower level . . . Future patio.

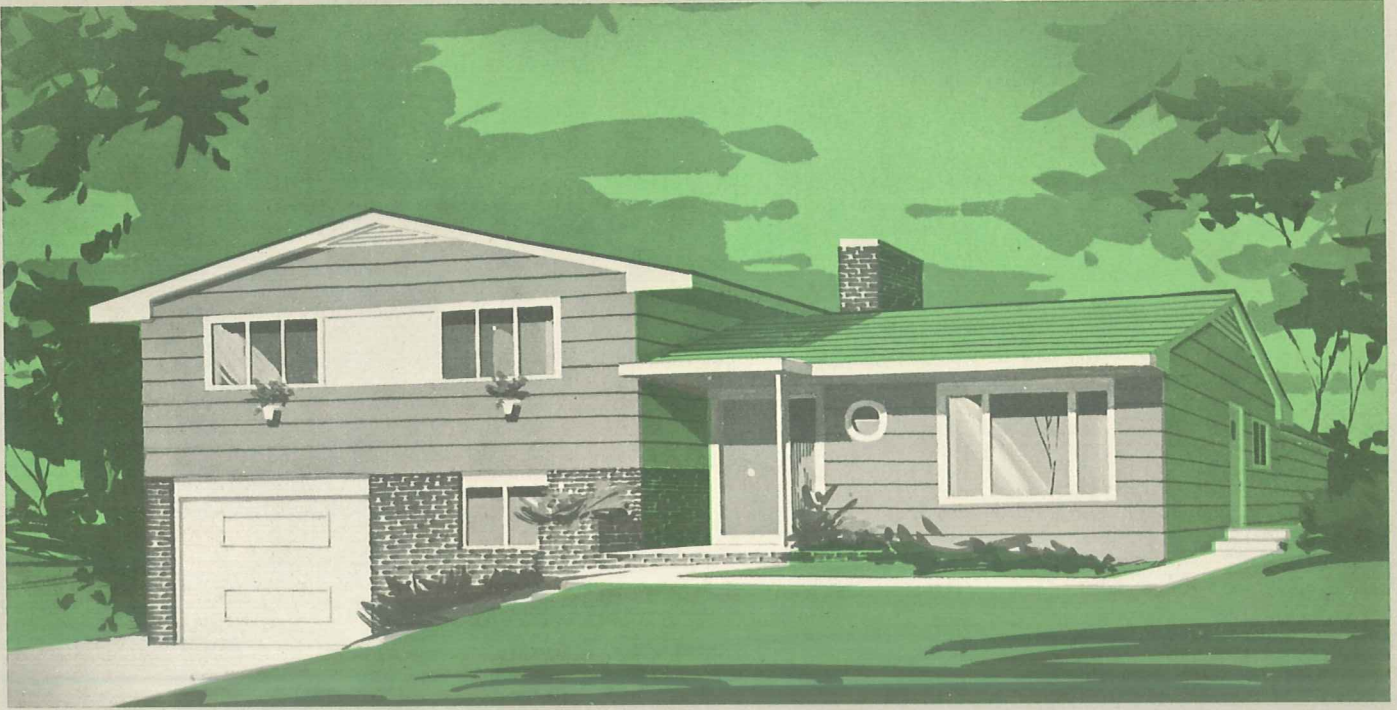


MAIN AND UPPER LEVELS

LOWER LEVEL



Blueprint plans are available for all homes illustrated in this book either as shown or in reverse position, if desired.

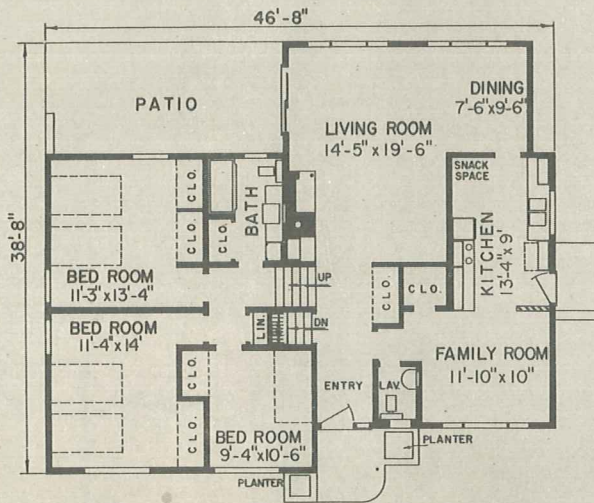


N P S 729

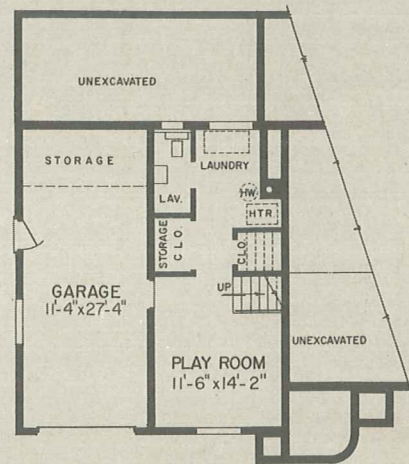
Living Area . . . Main and Upper Levels — 1,471 sq. ft.

Lower Level — 704 sq. ft.

FEATURES: Here again is a big home offering the best in comfortable living . . . Lavatory, family room, kitchen with snack space, garden view living-dining room and adjoining patio form an attractive and easy-to-live-in main level . . . A lavatory is included in the lower level and a vanity bath serves upper level bedrooms.



MAIN AND UPPER LEVELS



LOWER LEVEL

Blueprint plans are available for all home designs illustrated, either as shown or in reverse position.



OUR ACCURATE BLUEPRINT PLANS ASSURE HOME SATISFACTION

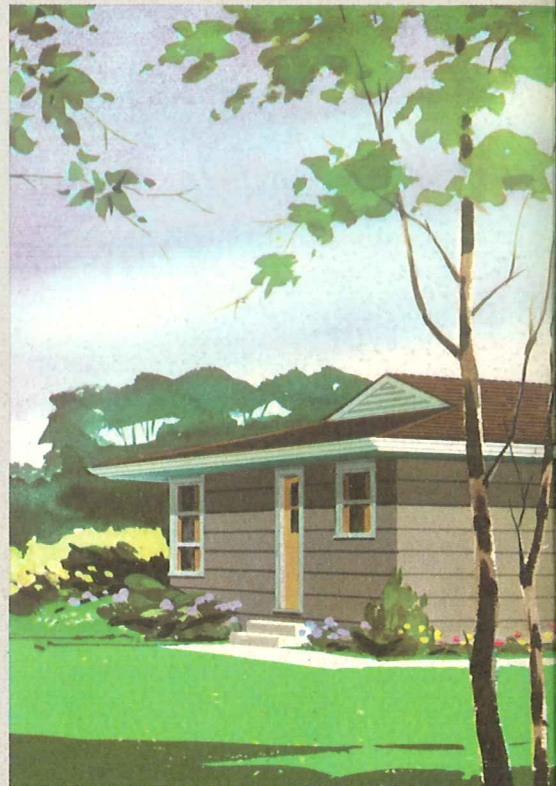
We welcome this opportunity to be of service to you. The complete facilities of our Home Planning Center are at your disposal without obligation . . . it is a pleasure to offer you all that is new, all that is best in modern living homes.

Whether you are planning to build a new home or remodel your present one, our trained personnel can give you many helpful suggestions. Our knowledge of local building practices and quality materials to do the job efficiently and economically is only a small part of the service available at our office.

The home designs in this book have been prepared and engineered by architects and technicians experienced in the home planning field.

Blueprint working drawings accurately show all essential information and include: basement or foundation plans, floor plans, front, rear and two side elevations, wall sections and all necessary details. All plans are available either as shown or reversed to fit your site. Blank specification and contract forms are included with blueprint plans.





MITCHELL NEWHOUSE LUMBER CO.

Telephone 732-2177 910 Woodlawn Road

LINCOLN, ILL.