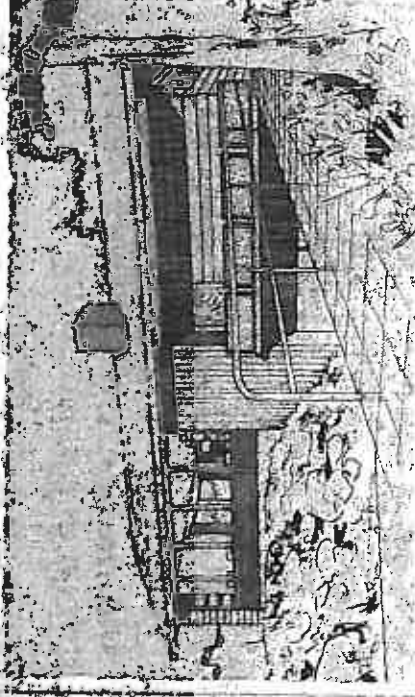
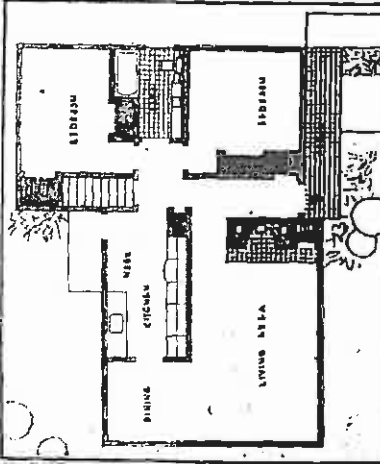


Quality Features North Side Home



OPEN HOUSE: A well-planned and quality-constructed two-bedroom house with full basement. It opens during National Home Week at 2211 N. 148th. H. J. Hagwood is the designer, Tri-Square Construction Co. the builder.



H. J. Hagwood, designer, has weather conditions in mind in the design of this two-bedroom house at 2211 N. 148th. The simplicity of design and trim and well-considered use of materials adds greatly to its acceptance as a desirable small house. Tri-Square Construction Co., quality builder, is pleased to place this house on the market. It is a most beautiful as they age, and they acquire the rich color and sheen of a fine finish that only comes with age. The quality of the materials used in the construction of this house is such that it will stand up to the test of time. The living area, dining area, kitchen, and bedrooms are all well-planned and finished to the highest quality. The full basement provides a convenient place for storage and a place for a furnace or boiler. The house is a true example of quality construction and is a most desirable home for a small family.

PLASTERING
 in
PAUL COOK'S
X-RAY HOUSE
 2609 S. W. 164th Place
 (OPEN TODAY)
 done by
C. W. WRIGHT
 6719 S. 124th St.
 Lander 0754

FOR Better Building
 USE
 SANDSTONE BRICK
 ROMAN BRICK
 MUTUAL MORTAR
 GLASS BRICK
 PLASTER MATERIALS
 CALL
Mutual Materials Co.
 1220 2nd Ave. S.E. 62-2222

INSURED SAVINGS
HOME LOANS

You are cordially invited to finance the purchase of your home through Union Federal Savings and Loan Association.

UNION FEDERAL SAVINGS & LOAN ASSOCIATION
 Henschel R. Hart, Pres.
SECOND FLOOR 1411 FOURTH AVE. BLDG.

View Stressed In Northwest Home Designing

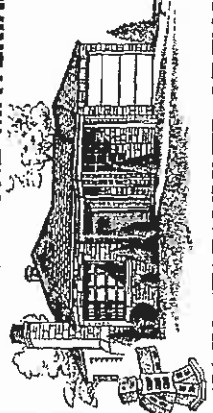
In the Pacific Northwest we acquire our lovely panoramic views through the trees and hillsides through great picture windows. But, do not overlook the importance of the furniture and consideration of the front of these walls and outdoor doors.

Today's furniture emphasizes the horizontal line. Sofas and chairs have low backs so that we can see the view. Tables are low enough to allow a clear view of the view. Some tables have exposed legs. Some tables have exposed legs. Some tables have exposed legs. Some tables have exposed legs.

Sofas are sectional in design and are sectional in design. They are sectional in design. They are sectional in design. They are sectional in design. They are sectional in design.

WE ARE PROUD TO
the PLUMBING in
PAUL COOK'S
X-Ray House
 2609 S. W. 164th Place - 1945
 South Seattle Plumbing Co.
 1345 - 1st Ave. S. E. 10-1811

Modern Styling
 with **LAYSTONE MATERIAL**
EASY STREAMLINED LIVING
 with **LAYRITE'S LAYSTONE**
 COME TO
OPEN HOUSE SUNDAY, SEPT. 9
 2609 S. W. 164th Place
 See the Layrite masonry constructed home in all its beauty. See the easy streamlined living Laystone material can give you. With Layrite masonry construction you enjoy beauty and durability.



Congratulations to Paul R. Cook, masonry contractor!
Concrete Products
 7265 E. MARGINAL WAY RAINIER 9801

"Colorful as the Grand Canyon"
 A perfect description of KAIBAB Arizona Sandstone. Nature's most colorful stone. Used by contractors such as Paul Cook. KAIBAB is now part of more and more beautiful country homes and patios in the Pacific Northwest.
 For the finest in hospitable Western living, specify KAIBAB Arizona Sandstone for your new home or patio.
Seattle Granite Center
 1315 RAINIER AVE. FRANKLIN 8200

WILKESON SANDSTONE
 Used by Builder Paul Cook
 QUARRIED BY
Walker Cut-Stone Company, Inc.
 P. O. Box 68
 Wilkeson, Washington
 Seattle Sales Office:
 4020 Aurora Avenue
 EVERGREEN 2532
 We Specialize in Split-face Ashlar—Patio Stone—Wall Rock and Cut Stone

fully constructed and finished as shown. The exterior finish is a combination of brick and concrete block. The interior finish is a combination of brick and concrete block. The house is a true example of quality construction and is a most desirable home for a small family.

TODAY'S FRONT PAGE FEATURE HOME
 INTRODUCING
Paul Cook Homes
 "as new as tomorrow"
 OPEN TODAY AT
2609 S. W. 164th PLACE
YEAKEL
 Realty
 Exclusive Agents for Paul Cook Homes
 CHERRY 0757
 826 S. W. 152nd
 BURIED, WASH.

"as new as tomorrow!"
 open today for your inspection
PAUL COOK HOMES
 2609 S. W. 164th PLACE
 MASONRY ONLY . . . no other construction material used in Paul Cook homes! You'll see colorful beauty and modern construction combined in the world's most successful building materials . . . slate, tile, stone and brick. Paul Cook homes are built for functional durability as well as smart appearance . . . in locations where the view is best!
 For Information Minor 4620

DO YOU NEED MORE ROOM?
 See what **MAGIC** unfolds
 with **"MODERNFOLD" DOORS!**
 Steel-framed, Vinyl covered "Modernfold" doors fold like an accordion to provide more area for furniture . . . happier, roomier living — save floor and wall space usually wasted by swinging doors. Large "Modernfold" doors are movable with that divide rooms easily, quickly and economically.



VISIT PAUL COOK'S
OPEN HOUSE TODAY
 2609 S. W. 164th Place
 See the practical application of Modernfold. A complete demonstration will be held in your own home. Open all day, today, Sunday, September 9th.
 See how **MODERNFOLD** Saves Space at the **HOME SHOW MODEL HOME**
 ARMORY—SEPT. 8 TO 16
Modernfold Doors, Inc.
 2915 1st Ave. S. MA. 2775

Care of Fine Wood Stressed

The proper care of wood furniture is so simple and so rewarding. The relationship of materials used in the construction of this house is such that it will stand up to the test of time. The living area, dining area, kitchen, and bedrooms are all well-planned and finished to the highest quality. The full basement provides a convenient place for storage and a place for a furnace or boiler. The house is a true example of quality construction and is a most desirable home for a small family.

Care of Fine Wood Stressed
 The proper care of wood furniture is so simple and so rewarding. The relationship of materials used in the construction of this house is such that it will stand up to the test of time. The living area, dining area, kitchen, and bedrooms are all well-planned and finished to the highest quality. The full basement provides a convenient place for storage and a place for a furnace or boiler. The house is a true example of quality construction and is a most desirable home for a small family.

No Mortar Needed For Brick Terrace
 Easy construction which must be done in a few days. The terrace is suspended from the wall of the house. Provides positional support and strength. The terrace is suspended from the wall of the house. Provides positional support and strength. The terrace is suspended from the wall of the house. Provides positional support and strength.

MR. McCALL of the South Seattle Lumber Co.
 is proud to have supplied all **LUMBER and FINE FINISHING MATERIALS**
 in PAUL COOK'S HOMES
 FOR YOUR INSPECTION
 Be sure to see the outstanding **PRIMA VERA SLAB DOORS**
SOUTH SEATTLE LUMBER CO.
 1499 S. 97th Ave. (Corner 91st)

INSURED SAVINGS HOME LOANS
 You are cordially invited to finance the purchase of your home through Union Federal Savings and Loan Association.
UNION FEDERAL SAVINGS & LOAN ASSOCIATION
 Henschel R. Hart, Pres.
SECOND FLOOR 1411 FOURTH AVE. BLDG.

Builders' New Headquarters To Be Opened Soon

Plans for the new headquarters building of the Seattle Home Builders' Association, according to A. N. Walker, president of the group, will be completed in the near future. The building, at Second Avenue and Mercer Street, was started early in the summer and is being erected by members of the association.

Ever E. Rogers, architect, designed the building with emphasis on horizontal lines and modern styling. A vertical concrete frame and reinforced concrete structure will be used in the building. The building will be a brick structure with a modern design. It will be a landmark building in the city.

Service in Material Shortage

CHICAGO, Sept. 5.—Swelling of the building market has become a big source of trouble for telephone manufacturers for telephones. The telephone industry is in a bind because of the shortage of materials. The industry is trying to find ways to get around the shortage. The industry is trying to find ways to get around the shortage.

Homewives Raise Fund for Children

BOSTON, Sept. 5.—A fund for children has been raised by the homewives of the city. The fund is for the benefit of children in need. The fund is for the benefit of children in need.

Community Parity For Shopping Trips

MADRID, Sept. 5.—(U.S. News.)—The community parity for shopping trips is being established. The community parity for shopping trips is being established.

Home Building Connection

The home building connection is being established. The home building connection is being established.

Air Force Reserve Offers Commissions To Businesswomen

The Air Force Reserve offers commissions to businesswomen. The Air Force Reserve offers commissions to businesswomen.

SEATTLE'S FINEST BUILDERS MAKE AVAILABLE Through A Package Mortgage Plan Complete

SEATTLE'S FINEST BUILDERS MAKE AVAILABLE Through A Package Mortgage Plan Complete

Farm-Family Programs To Be Considered

SPOKANE, Sept. 5.—Farmers and others interested in the farm family programs will have a chance to discuss them at a meeting. The meeting is for the benefit of farm families.

MEMBER

SEATTLE HOME BUILDERS ASSOCIATION

LOOK FOR THIS EMBLEM . . .

for IT IS YOUR ASSURANCE OF TOP QUALITY CONSTRUCTION

The Seattle Home Builders' Association

Includes the Following Members:

BUILDER MEMBERS:

The Seattle Home Builders' Association is comprised of a group of men with years of experience in the building field behind them. These men employ man supplied by the Seattle Trades Council, and have served the friendly and honest co-operation of the sub-contractor and materialmen.

Old Bardsahl HE. 5843
 Sam Beaton WE. 1618
 M. L. Blupack EM. 4505
 Stanley Bronken VE. 0385
 A. W. Brown RA. 5063
 R. B. Burtill DE. 3792
 A. Fred Carline EM. 9087
 Bernhard Dahl GA. 9480
 Herbert Dahl GA. 3166
 Elmer Dearing HO. 0913
 O. Ferreri & Son RA. 8239
 Hans Frosche HE. 8108
 H. E. Foreman ME. 1433

Robt. J. Garland GA. 5884
 Rex E. Gill EM. 9600
 Jack Gillespie VE. 5006
 W. W. Gordon EM. 3201
 Halter Lake Constr. Co. EM. 3781
 D. B. Harwood EM. 3400
 David Harvey EM. 1515
 Heggren Constr. Co. VE. 5028
 August Jackson ME. 2881
 O. Ferreri & Son SU. 8633
 Thom. Jacobson SU. 4538
 Gordon Johnson Rich. Bch. 183

Lee & Kirshbaugh LA. 3540
 Nels Nyberg FI. 3882
 L. Paulson DE. 2023
 Chas. Reisdorff, Jr. KIRK. 72478
 L. I. Seim CH. 6550
 Eric A. Spolander GA. 5211
 Axel Thornberg VE. 5028
 V & M Const. Co. KE. 4860
 A. N. Walker EM. 4444
 A. C. Webb & Co. HO. 1080
 Alfred Zemanan KE. 9028

Ask Your Builder for G. E. Appliances in Your Home

Stratoliner De Luxe Automatic Range

Finest features of any Range on the market today.

G-E ELECTRIC SINK

Best in automatic dishwashing and modern sink designed for installation of G-E Disposal.

SPACE MAKER REFRIGERATOR

with 43 lb. Across the Top Freezer. Famous G-E Quality for the best in Refrigeration.

G-E AUTOMATIC WASHER

Set the dial... automatically washes, rinses, dries and spins your clothes wonderfully fluffy, and dries itself off!

G-E STORAGE CABINETS

Give you the same fine quality found in all G-E Appliances.

Simply Amazing!

See how you can transform your OLD FURNITURE into the exciting new styles of today at the 'HOME SHOW'

ASSOCIATE MEMBERS

ACE Window Cleaning Co. VE. 6908
 Arnie Granite & Tile Co. EV. 0666
 Otto Adams The Co. SU. 8350
 Air Flo Inc., Heating AL. 3777
 Ametec Mfg. Corp. AL. 3581
 Anderson & Johnson, Excavating GL. 0340
 L. E. Ballou & Sons, Plumbing HE. 4600
 T. O. Benson, Flooring Contr. SE. 0700
 Briggs Mfg. Co. EA. 0733
 Builders Brick Co. ME. 7240
 Canal Ready Mix Concrete Co. ME. 2513
 Central Lbr. & Supply Co. GA. 5911
 Diamond Tile Co. WE. 8320
 Edw. E. DeLong, Architect EA. 4631
 Electric Home Service SU. 8123
 Ellis Shale & Limestone Co. HE. 6988
 Elliott Bay Lumber Co. EM. 8680
 Louie Engelhart & Sons EM. 0383
 Ernst Hardware Co. EL. 7260
 Fireproof Insulation Co. SI. 5000
 L. O. Franklin & Co., Sewer Contrs DE. 3670
 Gahrath & Co. ME. 8500
 General Electric Supply Corp. SE. 6100
 S. B. Greenwood, Plastering Contr. WE. 6267
 E. W. Greenleaf, Plastering Contr. EM. 6264
 G. Annell & McLean, Furniture ME. 3100
 E. Kuehlin, Hardwood Flooring DE. 1513
 Hayward Co. EL. 5010
 Henman Electric Service DE. 5900
 Herman & Schram Co. MA. 2214
 Ed Henson, Cement Work MA. 7000
 O. M. Jacobson, Painting Contr. WE. 3236
 Joe's Electric Co. EM. 3010
 R. Johnston & Son, Asphalt Paving EM. 3010
 Kelly Goodwin Hardwood Co. Edmonds, 2627 MA. 5663

THE SEATTLE HOME BUILDERS' ASSOCIATION OFFERS A FREE HOME BUILDING INFORMATION SERVICE!

CALL SE. 8390 or COME IN PERSON TO 905 LLOYD BUILDING

BLEACHED BLONDE NATURAL BRAIN DRIFTWOOD And Many Others

Choose the finish to match your present decorative scheme.

Use the Remover Kit for easy removal of old finish and the Bleaching Kit to obtain new finish desired. It's simple, safe and economical. Complete, detailed instructions included in each kit.

Never before has anything like this been offered the home-maker!

DALYS' REMOVER AND BLEACHER KIT

FREE DEMONSTRATIONS

Each Tuesday 8:30 and 7:30 p. m. at our showroom

1111 N. 20th St. ST. 9481

"Is the Finest Dime!"

SEATTLE'S FINEST BUILDERS MAKE AVAILABLE Through A Package Mortgage Plan Complete

SEATTLE'S FINEST BUILDERS MAKE AVAILABLE Through A Package Mortgage Plan Complete

SEATTLE'S FINEST BUILDERS MAKE AVAILABLE Through A Package Mortgage Plan Complete

SEATTLE'S FINEST BUILDERS MAKE AVAILABLE Through A Package Mortgage Plan Complete

SEATTLE'S FINEST BUILDERS MAKE AVAILABLE Through A Package Mortgage Plan Complete

SEATTLE'S FINEST BUILDERS MAKE AVAILABLE Through A Package Mortgage Plan Complete

SEATTLE'S FINEST BUILDERS MAKE AVAILABLE Through A Package Mortgage Plan Complete

SEATTLE'S FINEST BUILDERS MAKE AVAILABLE Through A Package Mortgage Plan Complete

62nd State Medical Association Convention Will Open Here Today

The 62nd annual convention of the Washington State Medical Association opens at the Olympic Hotel today with a meeting of the board of directors. The convention will continue through Friday and Saturday in the Mayflower Hotel.

The association is composed of 1,200 members from all parts of the state. The convention is held annually in a different city.



DR. KENNETH L. PARTLOW, president of the Washington State Medical Association, is seen at the Olympic Hotel at 8:30 a.m. today.

Dr. M. Shelby Jans, Seattle, is president of the board of directors. The board will meet at 10 a.m. today. The convention will continue through Friday and Saturday in the Mayflower Hotel.

Good Care Of Color-Television Heating Plant Is Advocated

NEW YORK, Sept. 8.—(AP)—Color moves back into the television set, and the other things which must be considered in the design of a color television set are the heating plant, the power supply, and the color control system.

Public relations of the medical profession will receive attention at the annual meeting of the American Medical Association, which will be held in Washington, D.C., from Sept. 15 to 19.

Home Builder Plans His Kitchen in Three Phases

When a home builder plans a kitchen, he considers three phases: the layout, the equipment, and the finishing. The layout is the most important phase, and it is the one that the builder spends the most time on.

At the building center, space is the key. The builder must consider the placement of the refrigerator, the sink, and the stove. The layout must be planned before the equipment is chosen.

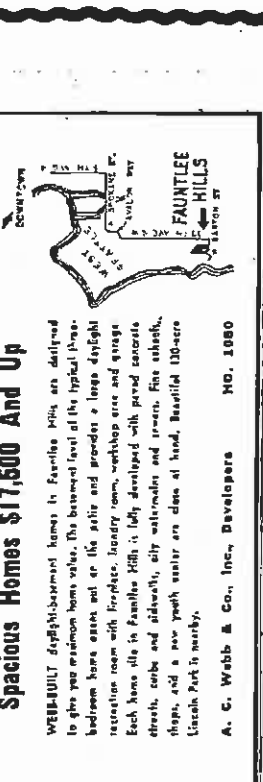
Utilities Today's streamlined mortgages can provide, within the scope of the owner's income, with utility equipment and labor saving the owner a great deal of money.

Utilities today's streamlined mortgages can provide, within the scope of the owner's income, with utility equipment and labor saving the owner a great deal of money. The mortgage is repaid through the utility bills.



Picture Your Family's Future in Beautiful Fauntlee Hills

An Exclusive Residential District
Fauntlee Hill is one of the Northwest's newest and finest planned residential communities. Each home site offers a sweeping view of the rugged snow-capped Olympics...



A. G. Webb & Co., Inc., Developers
1000

THERE'S PLENTY OF MORTGAGE MONEY AVAILABLE HERE!

That's right—there's plenty of mortgage money available at Puget Sound Mutual Savings Bank! If you plan to build or buy a new home, come to us for a discussion of your financial needs.



For a definite appointment, call us at MUtual 0424 and ask for Mr. M. Bean.
PUGET SOUND MUTUAL SAVINGS BANK
SECOND AT MADISON

3 bedrooms--plus den 2124 East 113th and 556 East 117th ROMAN BRICK \$14,750

- CLOSE TO NORTHGATE
- Large Living Room
 - Bath
 - Bar off Dinette
 - 10 Patio
 - Breakfast Nook
 - Plaster Walls
 - Den (kitchen plus)
 - Ceramic Tile Kitchen and Bath
 - Fireplace
 - Automatic Washer
 - Recessed Auto Heat (cas. room)
 - Attached Garage

ECKMANN HOMES, INC.
Owner-Builder
Phone JU. 7393 -JU. 6598

3 BEDROOM, PERMASTONE HOME 11552-24th N. E. 2 Bks. West of Bothell Way

OPEN HOUSE 10 A.M. '81 DARK AND ALL WEEK!
DON'T FAIL TO SEE THIS LOVELY HOME TODAY... with a beautiful view of sparkling Lake Washington and the towering Cascade Mountains, this gorgeous home fits perfectly into a background of natural trees and shrubs. Built and designed by a Master Craftsman this home is sure to be a feature of the "AD City Open House" show today, and all this week. You'll thrill at the "bed-room" size recreation room... with door leading to outside patio and an 18-ft. indoor flower box, a blaze of color winter and summer. Hardwood (hand-picked) floors throughout. Massive Swedish style "floor-to-ceiling" fireplace and "floor-to-ceiling" picture windows make the living room unbelievably attractive and different... in fact, every room of this outstanding home is worthy of your attention. Lath and plastered throughout and beautiful parquetry floor.

G. and S. Construction Water Builders
AL. 2640 1121 Elliott W. ME. 8694

Land Planning Important For Communities

The most important step in the development of a community is the planning of the land. This includes the location of schools, parks, and other public facilities. The planning must be done before the buildings are constructed.

Business men who are interested in the development of a community should consider the importance of land planning. It is the foundation upon which a successful community is built.

Convention Of Naturopaths To Open Here

The Washington State Naturopathic Association will hold its annual convention Friday and Saturday in the Mayflower Hotel. The convention will feature lectures, demonstrations, and a display of naturopathic products.

Speakers during the convention include Dr. J. B. Baxby, Dr. W. M. Blything, Dr. J. H. Rogers, and Dr. E. W. Rogers. The convention will be held from 9 a.m. to 5 p.m. on both days.

Adequate Wiring Desirable In Home

Efficient, convenient and economical wiring is essential for the safety and comfort of the home. Adequate wiring is also a requirement for the use of modern electrical appliances.

Members who have had their annual business meeting and adjourned at 10:30 a.m. on Saturday afternoon. The convention will be held from 9 a.m. to 5 p.m. on both days.

62nd State Medical Association Convention Will Open Here Today

The 62nd annual convention of the Washington State Medical Association opens at the Olympic Hotel today with a meeting of the board of directors. The convention will continue through Friday and Saturday in the Mayflower Hotel.

Public relations of the medical profession will receive attention at the annual meeting of the American Medical Association, which will be held in Washington, D.C., from Sept. 15 to 19.

Carpet Colors In Fashion-Wise Tones

The carpet colors for fall are the most important. The colors should be chosen to complement the other colors in the room. The most popular colors for fall are shades of brown, tan, and beige.

The carpet colors for fall are the most important. The colors should be chosen to complement the other colors in the room. The most popular colors for fall are shades of brown, tan, and beige.

LOOK AT THESE FEATURES...

- All Plastered
- Ceramic Tile
- Aluminum Window Sash
- Bar Tile (Life Time Roofing)
- 18 ft. of indoor
- 22x16 Recreation Room
- Large Patio
- Revolving
- "Sandstone" Plumbing
- Vinyl Ray Fixtures
- High Tile Bath

\$35,000
G. and S. Construction Water Builders
AL. 2640 1121 Elliott W. ME. 8694

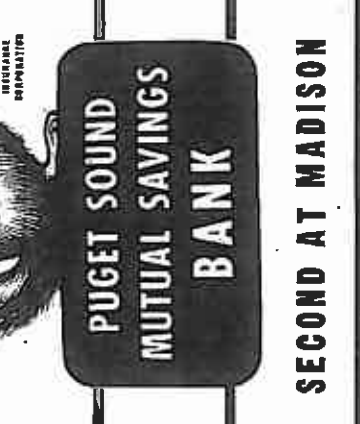
Home Builder Plans His Kitchen in Three Phases

When a home builder plans a kitchen, he considers three phases: the layout, the equipment, and the finishing. The layout is the most important phase, and it is the one that the builder spends the most time on.

At the building center, space is the key. The builder must consider the placement of the refrigerator, the sink, and the stove. The layout must be planned before the equipment is chosen.

Picture Your Family's Future in Beautiful Fauntlee Hills

An Exclusive Residential District
Fauntlee Hill is one of the Northwest's newest and finest planned residential communities. Each home site offers a sweeping view of the rugged snow-capped Olympics...



A. G. Webb & Co., Inc., Developers
1000

3 BEDROOM, PERMASTONE HOME 11552-24th N. E. 2 Bks. West of Bothell Way

OPEN HOUSE 10 A.M. '81 DARK AND ALL WEEK!
DON'T FAIL TO SEE THIS LOVELY HOME TODAY... with a beautiful view of sparkling Lake Washington and the towering Cascade Mountains, this gorgeous home fits perfectly into a background of natural trees and shrubs. Built and designed by a Master Craftsman this home is sure to be a feature of the "AD City Open House" show today, and all this week. You'll thrill at the "bed-room" size recreation room... with door leading to outside patio and an 18-ft. indoor flower box, a blaze of color winter and summer. Hardwood (hand-picked) floors throughout. Massive Swedish style "floor-to-ceiling" fireplace and "floor-to-ceiling" picture windows make the living room unbelievably attractive and different... in fact, every room of this outstanding home is worthy of your attention. Lath and plastered throughout and beautiful parquetry floor.

G. and S. Construction Water Builders
AL. 2640 1121 Elliott W. ME. 8694

Home Builder Plans His Kitchen in Three Phases

When a home builder plans a kitchen, he considers three phases: the layout, the equipment, and the finishing. The layout is the most important phase, and it is the one that the builder spends the most time on.

At the building center, space is the key. The builder must consider the placement of the refrigerator, the sink, and the stove. The layout must be planned before the equipment is chosen.

Picture Your Family's Future in Beautiful Fauntlee Hills

An Exclusive Residential District
Fauntlee Hill is one of the Northwest's newest and finest planned residential communities. Each home site offers a sweeping view of the rugged snow-capped Olympics...



A. G. Webb & Co., Inc., Developers
1000

When You Purchase This All New Fully Automatic ELECTRIC SINK

Youngstown Kitchen 48" Electric 314 Complete Automatic Dishwasher and Sink Combination. Priced at only \$399.95
Take 18 Months to Pay
VISIT MACKINNON'S ALL-STEEL YOUNGSTOWN KITCHEN DISPLAY AT SEATTLE HOME SHOW

When you visit the Seattle Home Show this week, be sure to see the working display of the all-new Youngstown Kitchen, at Mackinnon's display booth. Let us show you the time-saving, work-saving kitchen of today... All booked up and in working order...
OPEN WED. AND FRI. EVENINGS
MACKINNON'S FURNITURE & APPLIANCES
"IN THE HEART OF LAKE CITY"
12702 BOTHELL WAY — PHONE OL 1133

Power Shortage Will Hit All Classes in N. W.

...of the power shortage...
...will hit all classes in N. W....

Wedgwood Park Home Open



BASIC PLANNING—Quality construction and attractive interior decorations are featured in this home built by Albert Balch at 4062 East 87th St., N. E.

W ALLURE STAPLES—The kitchen, bath and basement. The bedrooms are done in the soft, warm tones of the Wedgwood Park home. The living room is a study in the art of modern living. The dining room is a study in the art of modern living. The kitchen is a study in the art of modern living. The bathroom is a study in the art of modern living. The basement is a study in the art of modern living.

Scholarship List For Summer Quarter At University Announced

Names of University of Washington students who received scholarships for the summer quarter were announced yesterday. A grand total of \$100,000 was available for the summer quarter. The following are the names of the recipients:

- Alfred A. Anderson
- John A. Baker
- Robert C. Baker
- William B. Baker
- James H. Baker
- Charles E. Baker
- Harold G. Baker
- Walter H. Baker
- George L. Baker
- Frank M. Baker
- Edward N. Baker
- Richard O. Baker
- Samuel P. Baker
- David R. Baker
- Joseph S. Baker
- Benjamin T. Baker
- Lucas U. Baker
- Robert V. Baker
- William W. Baker
- James X. Baker
- Charles Y. Baker
- Harold Z. Baker

Accident Rate High in Guam

U. S. M. S. S. (U. S. M. S. S.)—This territory in the Western Pacific with an area of 1,600 square miles has the highest accident rate in the United States. The accident rate in Guam is 20 times greater than in the United States. The accident rate in Guam is 20 times greater than in the United States. The accident rate in Guam is 20 times greater than in the United States.

Competitors Aid Man in Hospital

HOUGHTON L. A. K. M. B. is a man in a hospital. His competitors are helping him. They are helping him in many ways. They are helping him in many ways. They are helping him in many ways.

E. B. VICK..

Builder Specializing in Quality Homes in Southwest Seattle

1725 - S. 106th
Immediately North of Rainier Golf Club

1348 S. W. 175th
Streetcar Div. of Rainier Park

Telephone Cherry 6662

See it Today!

Home of the Week

WITH ELECTRICAL LIVING FEATURES

BY Westinghouse



THE CONTRACTOR BUILDS BEAUTIFUL

Wedgwood Park

Invites you to visit this outstanding house

4062 East 87th St.

- Roman brick front
- Hand-split cedar shake roof
- Hand-hewn cedar plank siding
- Beautiful ceramic tile kitchen and bath
- Imperted Swedish figured hardwood doors
- Attached garage... full concrete basement
- Sewers, curbs, paved streets, native trees

See the latest in home planning

...planned, equipped kitchen that looks smarter and saves miles of steps; planned automatic laundry that works while you rest; planned lighting that gives character and "easy to see" illumination to this home; planned wiring that provides full capacity and convenience for your future electrical needs as well as today's.

See the latest in appliances by Westinghouse

...outstanding products that reflect the latest design in electric ranges, refrigerators, automatic clothes washers, dryers and kitchen ventilation... superior construction and value of this home. You can be sure if it's Westinghouse. All these appliances can be included in your loan.

ALBERT BALCH

COMMUNITY BUILDER

8050 35th N. E.
Fl. 7900

YOU ARE INVITED TO COMPARE SIX OPEN MODEL HOMES TODAY!



Wedgwood Park

Beautifully furnished 3-bedroom rambler. The latest in architectural finish, combined with the latest trends in home furnishing and interior decorating.

Three Colonial fireplace with Roman brick facing

Birch cabinets with magnetic catch

Improved Swedish birch doors

Slide-away birch doors in kitchen

Youngstown Automatic Sink

Ceramic Tile kitchen and bath

5817 43rd N. E.

Youngstown Kitchens



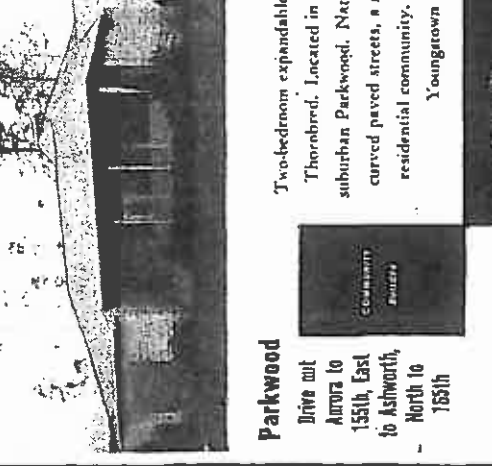
These 1951 master-built homes feature the wonderwork saver Youngstown automatic sink with scores of wonderful Youngstown features for 1951. You'll find efficiency plus pleasure living a Youngstown guarantee in these Albert Balch homes.

ALBERT BALCH

COMMUNITY BUILDER

8050 35th N. E.
Fl. 7900

YOU ARE INVITED TO COMPARE SIX OPEN MODEL HOMES TODAY!



Wedgwood Park

Two-bedroom expandable to four Thorebred. Located in beautiful suburban Parkwood. Native trees, curved paved streets, a restricted residential community. Features Youngstown kitchens.

Youngstown Kitchens



These 1951 master-built homes feature the wonderwork saver Youngstown automatic sink with scores of wonderful Youngstown features for 1951. You'll find efficiency plus pleasure living a Youngstown guarantee in these Albert Balch homes.

ALBERT BALCH

COMMUNITY BUILDER

8050 35th N. E.
Fl. 7900

Power Shortage Will Hit All Classes in N. W.

...of the power shortage...
...will hit all classes in N. W....

Wedgwood Park Home Open

...of the power shortage...
...will hit all classes in N. W....

YOU ARE INVITED TO COMPARE SIX OPEN MODEL HOMES TODAY!

ALBERT BALCH

COMMUNITY BUILDER

8050 35th N. E.
Fl. 7900

LOOK FOR THE BLIMP

12216 12th N. W.
Open All Day Sunday

BENTON'S REALTY

1717 4th Ave.
SE, 485

