

1955

McPHERSON'S SPECIAL
The Seattle Times
FRIDAY SEPTEMBER 3, 1955

Program



In this 16-page program you'll find a selection of wonderful new homes that will delight you in their futuristic approach to everyday living comfort. During the Parade of Homes they will be open for your inspection from 11 to 9 Sundays and from 12 to 8 on week-days.

Each home represents the efforts of a Master Builder to present—in a finished showcase model—a home that is the finest . . . at its price, size, quality construction and location.

Let this program . . . its information and directions . . . guide you to 270 of the best home buys of the year. Plan now to look and compare. There is no better investment than to buy your own home.

Miss Gail Wald
MISS McPHERSON REALTORS

FREE Refreshments and Balloons . . . See Page 10

SAVE
THIS PROGRAM
All Homes Open Daily
From Noon Till 9
5 Premium 10th
Through 14th

Parade Of Homes Tour Map

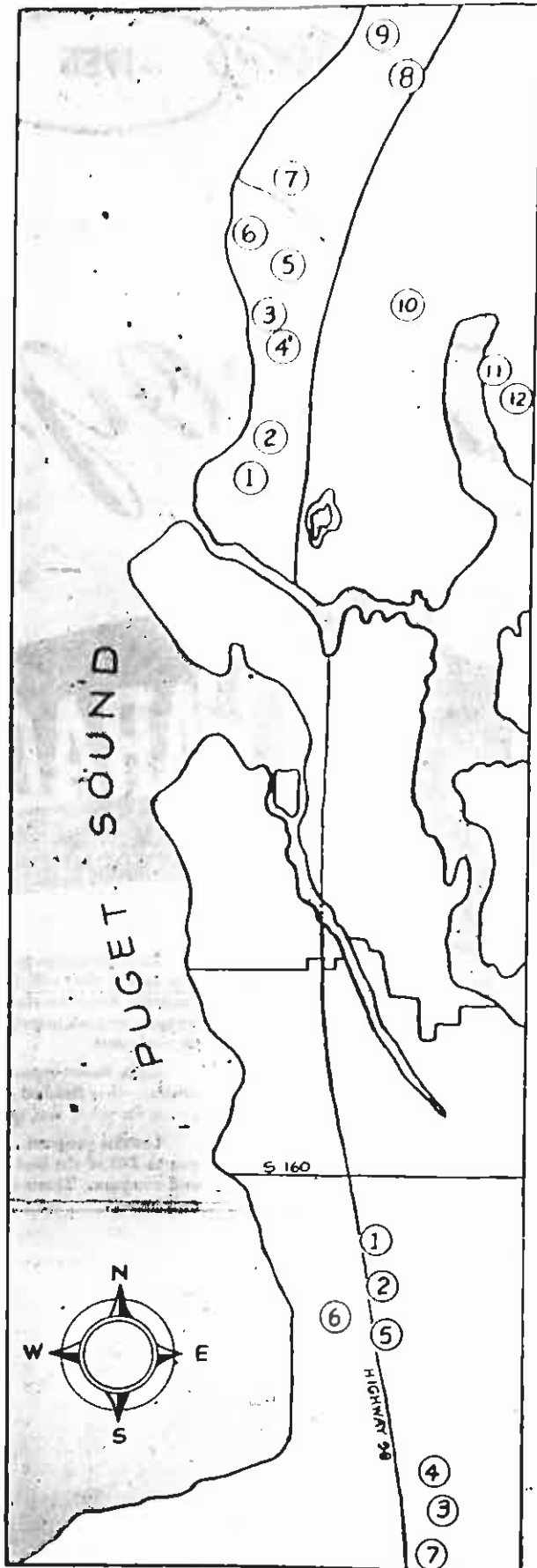
North or South . . . you can plan your tour on this map . . . and for your convenience these show homes are listed in order so that you will spend the least time driving . . . for more information turn to the builders page in this program.

North End

1. Sound View
2347 W. 98th
2. Green Arbor
10523 11th N. W.
3. Rosewood Terrace
104 N. 178th
4. Happy Doll
17306 1st N. E.
5. Glenmere
10334 1st N. E.
6. Richwood Suburbans
1881 W. 187th
7. Irv Weerner Homes
NW Edmonds Highway at W. 100th
8. Mungler Homes
7883 238th S. W.
9. Morrison Homes
6200 317th S. W.
10. The Northwind
143 E. 168th
11. Inglewood Manor
6400 N. E. 154th
12. The Hillman
18424 79th N. E.

South End

13. 1. Bowmont Terrace
3103 S. 170th
14. 2. Bow Vista
16601 36th S.
15. 3. Valley Vista
2002 S. 242nd
16. 4. Suburban View
3018 S. 238th
17. 5. Gillespie Homes
20000 22nd S.
18. 6. Normandy Vista
18200 2nd Ave. S.
19. 7. Seasidecrest



NORTH END
Entry No. 1 & 2

Sound View

PARADE OF HOMES



A truly magnificent example of fine craftsmanship by the Lagerquist Brothers... these beautiful stone and cedar mansions are enhanced even more by a captivating Sound view. Truly a "plus value" home, with 4 bedrooms, double plumbing, 2-car garage, and everything else and more that you're looking for.

\$26,500

Furnished by Buyers

DIRECTIONS:

From the corner of 24th N W. & West 85th, drive North on 24th N W to West 98th St. MacPherson signs will guide you to 2347 W 98th or call PL. 6300.



Lagerquist Model Homes Feature
KITCHEN APPLIANCES by
GENERAL ELECTRIC
for . . . Efficiency, Economy and Lasting Beauty!



Carl Arthur Clarence

GREEN ARBOR

DIRECTIONS:

Drive North on 15th N. W. to Holman Road. Follow Holman Road to 12th N. W. Turn on 12th N. W. Follow MacPherson signs to 10523 11th N. W., or call PL. 6300.



The Lagerquist Brothers' national prize winning homes . . . homes you would expect to cost thousands more . . . on winding streets, spacious with fireplaces, double garages, oil heat, ranch kitchens. Plan now to see these lovely 3- and 4-bedroom ramblers.

\$23,950

The Lagerquist Brothers

The Lagerquist brothers specialize in conservative built-to-last homes that respect sound construction principles.

Since 1927 when they went into business with their father, John G. Lagerquist who founded the company, they have constructed numerous apartment houses, churches, municipal and commercial buildings as well as homes.

We wish to thank these firms for their supplies and help in building Sound View and Green Arbor Homes

- B. A. Dawson, Plumbing
- Central Service Sales, Furnaces
- Electrical Home Service
- Herman & Schram, Floor Coverings
- Mutual Materials, Bldg. Stone
- Northwest Builders Hardware
- Salmon Bay Sand & Gravel Co.
- F. L. Hartung Glass Co.
- Ferber & Son, Plastering
- Moen Faucet

for sale by MacPHERSON REALTORS—
The Largest Selection of New Homes in Seattle

NORTH END
Entry No. 3

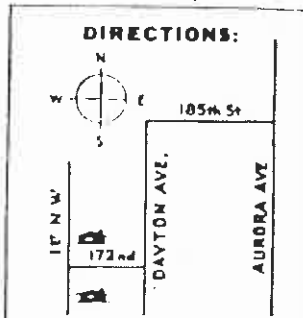
ROSEWOOD TERRACE



by . . . TOM ROSE
Seattle Master Builder who has built many fine homes in Maple and Broadway. His Rosewood Terrace best has tall native trees, black-topped streets and cement curbs. An ideal address for you!

16 Beautiful Homes
in 6-on-1 styles so popular with today's home buyers—These spacious 6-on-1 quality homes are available in 2 basic models in a perfect native setting. Some with full basements, others with extra rooms above the garage. See them today! Modern Heat with Oil Heat—Your Best Buy Always.

\$16,250 to \$17,000
Built under F. H. A. Supervision
Financing through Burwell & Morford Mortgage Co.
For their part, we wish to thank:
Herman & Schram, Floor Covering W. P. Fuller & Co.
Erv Parent Co., Floor Coverings John M. Nelson
Bayles Brothers, Inc., Furnaces Drywall
Gammes Plumbing & Heating Co. Moon Faucets



ROSEWOOD TERRACE:
Drive to 1st N. W. and 173rd St. and follow the MacPherson signs to model house at 106th N. 173rd, or call HE 4900.
Happy Dell:
Drive North on Aurora to 105th, turn left and follow the MacPherson signs to the Parade of Homes entry at 17306 1st N. W., or call HE. 4900.

NORTH END
Entry No. 4



Rose Marie Nelson
Mrs. Easter-Williams



Happy Dell \$13,950
to
\$14,750
FEATURES BASEMENT HOMES

Maximum space and beauty at minimum cost by Ralph Williams and Bud Easter. All FHA built homes featuring . . . 2 fireplaces, 3 bedrooms, open stairways, 2 baths, kitchen eating space and many more extras.
Be sure to see the model home today!



We thank the following firms and suppliers for their part in the building of Happy Dell.
F. L. Hartung Glass Co.
Erv Parent Co., Floor
Delman Plumbing
Western Bulldozing
L. E. Beck, Masonry
Maxfield's Lake City
Cabinet Shop
James Fuller
Match Electric
Reimier Apfahrt
Moon Faucets

for sale by MacPHERSON REALTORS — The Largest Selection of New Homes in Seattle

Decorative flourish **NORTH END**
Entry No. 5 *Decorative flourish*



Delores Sampson
Miss Glenmere

Bonnie

GLENMERE

 by Donald N. MacDonald

"The Tract With Atmosphere" is Glenmere where you find the best home buys on the market today. One look at these huge 6 on-1's and 7 on-1's will convince you that this is the place for happy home living. The extra large floor plans include the features you want: double plumbing, recreation rooms, full basements and double fireplaces. Visit Glenmere today amid lofty evergreens in a quiet setting. Big family? Glenmere features 3- and 4 bedroom models. Take a look see for yourself!

\$14,500 to \$14,950

DIRECTIONS:

Drive North on Aurora to N. 195th, turn left and follow the MacPherson signs to the show house at 19334 1st N. W., or call Li. 3164.



Seattle Master Builder, Donald MacDonald has been specializing in custom homes. Although a young builder, his background and experience qualifies him as a builder that knows how to build quality homes. He expects to complete 30 houses this year in Glenmere, a plat located at 195th and 1st N. W.

We wish to thank these firms who participated in the Glenmere addition: Asphalt Paving by Seattle Service Co. W. P. Fuller and Company, S&A Dry Wall, and Moon Faucet. Dean Eving, Brick Mason.

for sale by **MacPherson Realtors** - *The Largest Selection of New Homes in Seattle*
Members of North End Brokers Association



RICHWOOD SUBURBANS

Master built

by
W. T. and B. B. SLABAUGH

... a father and son team combination who have been building homes for many years in N. E. Seattle. Part of their past experience has been the construction of apartment houses and commercial buildings. The father-son team will complete 20 homes this year.

In Richwood Suburbans you will find beautiful 3 bedroom basement ramblers with large floor plans... in a home-like native setting. Built by Slabaugh and Son in a modern new plot close to Richmond Beach. Available in two basic floor plans with large family kitchens and full basements. See the stunning model home today or any day next week.



The ideal family home with basements and extra features for all members of the family. Bring family out today!

Financing by
Burwell & Merford

\$15,250

We wish to thank the following firms:
W. P. Fuller & Co. and
Eidem Lumber & Plywood Company

Richwood Suburbans:
Drive out Richmond Beach Road to 20th N. W., turn North to 197th and follow the MacPherson sign, or call LI 3164.

DIRECTIONS:

Irv Woerner View Home:
Drive North on Aurora to N. 185th, turn left to 8th N. W. then turn right and follow MacPherson sign, or call LI 3164.



MASTER BUILT VIEW HOMES

by

IRV WOERNER



Irv Woerner, Seattle Master Builder, for the past 18 years has built many of the city's finest homes. Woerner builds custom houses in the \$16,000 bracket. Be sure to attend his model home!

Master built 3 bedroom homes on level lots with sweeping territorial views gives you a better buy for your money. See the huge living rooms, dining room, rich ceramic tile in double baths and modern kitchen plus separate utility room... yours to see today!

from \$15,750



for sale by

MacPHERSON REALTORS

The Largest Selection of New Homes in Seattle

Decorative flourish NORTH END Entry No. 8 *Decorative flourish*

MUNGER HOMES

present

'56 Models!



Shirley Kraushar
Miss Munger Homes

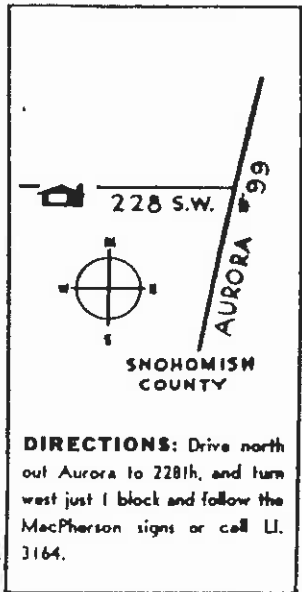
Help wanted! 56 families for 56 sparkling new ramblers by R. A. Munger. Spacious and bright, these 3-bedroom homes are on large lots ideal for your family. Utility rooms and air conditioned oil furnaces are features the wife will like. Show her a treat in a new Munger home today. Buy one completely furnished and pay nothing down.

R. A. Munger, Master Builder, has built many houses in Seattle even though only being in the building field 5 years. See the homes of this aggressive Seattle builder . . . you'll be glad you did.

Complete home furnishings by Nicholson's Furniture Co. **\$11,100**

We wish to thank the following for their part in presenting you the 1956 Munger homes:

- Bathroom Electric
- North Park Heating
- Asphalt Paving by SEATTLE SERVICE CO.
- W. P. Fuller & Co. Moon Faucets
- Warren D. Jones Drywall
- L. C. Drage Drywall
- Mallery & Compton, Bulldozing



Your Best Buy — Always

MUNGER HOMES

feature

WESTINGHOUSE APPLIANCES



See the Westinghouse appliances famous for economy and style. They're the best for easy modern living.



You Can Be Sure If It's Westinghouse

for sale by MacPHERSON REALTORS — The Largest Selection of New Homes in Seattle

NORTH END
Entry No. 9

PARADE OF HOMES

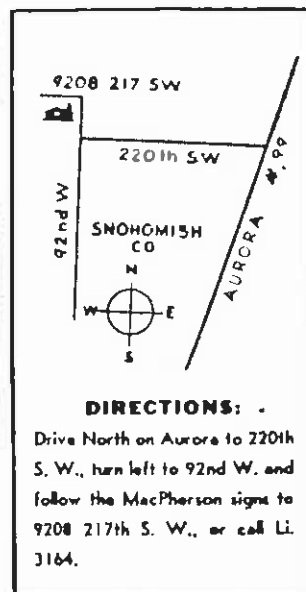
J. W. MORRISON'S

Del Mar Homes

Built by J. W. Morrison, these more-for-the-money homes are outstanding entries in the home parade of '55. Contemporary in design and practical in their approach to everyday living comfort. You'll find such features as beamed ceilings, fireplaces, Fenron picture windows . . . all in wonderful native setting surrounded two sides by towering evergreens. An area of safe, quiet streets perfect for your growing children. Just a few blocks from Aurora and minutes from downtown.



Velma Lee Bidden
Mrs. Del Mar



We wish to thank the following firms for their help in the construction of Del Mar Homes:
Myland Roofing, Bill's Millwork, Cabinets; Eastside Insulation, Asphalt Paving by Seattle Service, Harold Jahr, Masonry; Krogh-Nardin Lumber Co., Everett; North Park Heating, Midway Asphalt, Hatch Electric, Malloy & Compton, Building; S & A Drywall, Lintz & Mamon, Drywall; Moon Faucet.

\$9,450 to \$12,000



See famous
**WESTINGHOUSE
APPLIANCES**

In
Del Mar Homes

Choose Westinghouse and you choose the finest in modern home appliances. Available at slight extra charge in Del Mar homes.

You Can Be Sure If It's Westinghouse



for sale by MacPHERSON REALTORS — The Largest Selection of New Homes in Seattle

NORTH END
Entry No. 10

"The Northwind" . . . \$12,600

DIRECTIONS:
Drive North on 5th N. E. to 167th, turn left and follow the MacPherson signs or call EM. 4771.

The first of two striking entries by Edgewater Construction Co. . . . a luxurious contemporary with 3 massive bedrooms, beam ceilings, Fenron picture windows, patio, oil heat, huge fenced grounds, truly a model show home for you to see during the Parade of Homes.



EDGEWATER CONSTRUCTION CO.

MS05

**Modern Heat With OIL Heat
Your Best Buy—Always**

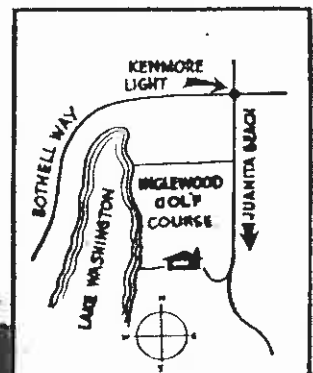
We wish to thank the following firms and suppliers for their part in the construction of the Northwind and Inglewood Manor Parade of Homes entries:

- Norman & Bohran, Floor Coverings
- Beckstrom Electric
- Erv Paroni Co., Floor Coverings
- Deimas Plumbing
- Ed Naight, Roofing
- Asphalt Paving by Seattle Service Co.
- Reese Mfg. Co., Furnaces
- Bronson-Stecher, Painting
- Frank Knox, Masonry
- S & A Drywall
- Moore Vanocis

NORTH END
Entry No. 11

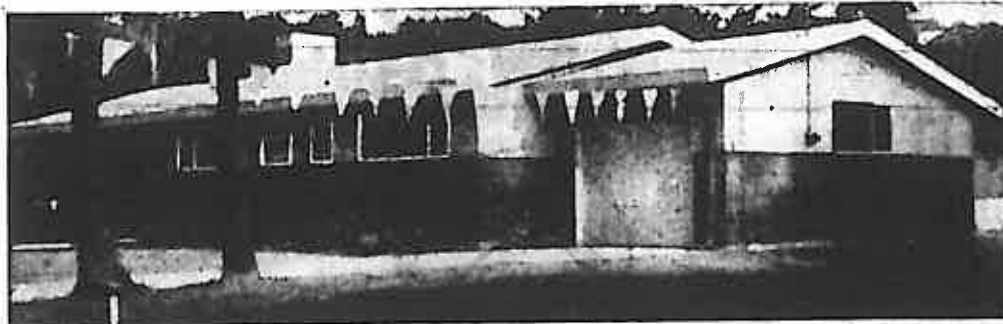
Inglewood Manor \$13,750 to \$20,000

The stunning "Tradewind" by Pat Martin, Gordie Swanson and L. Marble in the growing fairway community in Inglewood Manor. These spacious and modern homes designed and built for modern living have 3 bedrooms, aluminum sash, Sun Valley-picture windows, high tile bath, formica counter tops, birch cabinet kitchens, silent light switches and golden oak floors. 9 models to choose from . . . many sites available. See them today.



DIRECTIONS:

Turn South on Juanita-Kirkland cut-off from the Bothell Highway, drive past Inglewood Golf and Country Club, 1.5 miles, turn right at first road to the model home or call EM. 4771.



for sale by MacPHERSON REALTORS — The Largest Selection of New Homes in Seattle

NORTH END
Entry No. 12



THE HILLMAN

Northlake Home Builders present a new concept of farm-style home — "THE HILLMAN."

This suburban 3 Bedroom home has been beautifully adapted to the country side. It features a variety of stone, brick & cedar exteriors with out sized view windows, wide sweeping eaves and is available with or without recreation room, carport, garage, basement, second bath, and Modern Heat With Oil Heat.

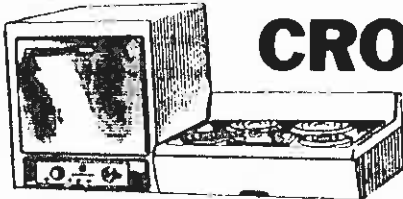
The Model home has a low pitch ceiling, a magnificent roman brick fireplace from floor to ceiling, full glass wall in the living area. The ranch kitchen is king size and has one unusual wall of exposed brick, a service bar and expensive birch-faced cabinets.

Master Built by Lawrence A. Berg, a substantial booster of the Kenmore Moorlands area; these homes are a must on your parade of homes inspection list.

\$12,500 to \$14,500

Easy FHA or GI Terms

ENJOY a more beautiful kitchen
more convenient cooking
with a new



CROSLEY

Copper
Built-in Oven &
Cooking Top

In the Northlake Home Builders Model Home

We wish to thank
CROSLEY CORPORATION
A complete new line of quality
home appliances and kitchen
equipment.

HART PLUMBING &
HEATING

BECKSTROM'S
ELECTRIC CO

LAKE CITY LINOLEUM

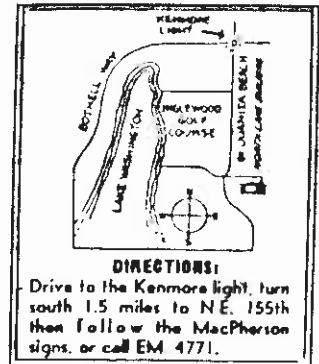
CROW LUMBER CO.

JERRY MYLAN
ROOFING CO.

MONTAG HEATING CO.

S & A DRYWALL
CONST. CO.

MOEN FAUCETS



... at all model homes

**FREE
Balloons**



MacPHERSON REALTORS — 5 Offices to Serve You

6201 University Way
PL. 6300

7400 Greenwood
HE. 4900

12715 Bothell Way
EM. 4771

18810 Aurora
LI. 3164

16848 Pacific Highway South
CH. 1000

Member of North End Brokers Association

SOUTH END
Entry No. 1

BOWMONT TERRACE

By Clarence H. and James Rigby



4 Bedrooms
2 Baths

\$9,000 to \$12,500



On large view lots . . . built to the specifications of your dreams . . . with double plumbing, french doors, fireplace, copper range hood and many other extras which give you more for your dollar. Convenient to both schools and bus transportation. Also enclosed garages and blacktop streets. A truly different house in this price bracket.

Finished by Scotland



*Dawn Fish
Miss Rigby Homes*

During the past 4 years, C. H. and James Rigby, father and son building team, have made rapid strides toward becoming one of Seattle's top construction firms. Their motto is "Comfortable living at a low cost."

BOWMONT TERRACE

Model Home

features

KITCHEN APPLIANCES

by

GENERAL ELECTRIC

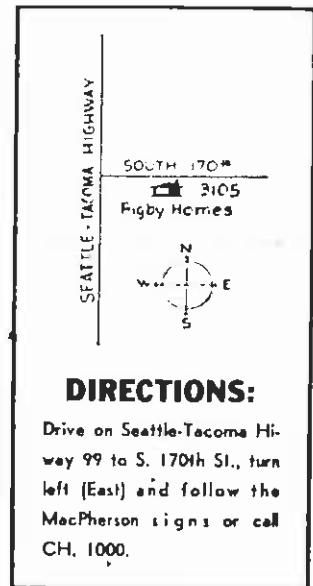
for

- ★ Efficiency
- ★ Economy
- ★ Lasting Beauty



We wish to thank the following for their part in the completion of Bowmont Terrace:

- Herman & Schram
- Thayer Floor Co.
- Erv Parent Co.
- Geddes Electric Co.
- W. P. Fuller & Co.
- Moore Faucet



DIRECTIONS:

Drive on Seattle-Tacoma Highway 99 to S. 170th St., turn left (East) and follow the MacPherson signs or call CH. 1000.

for sale by MacPHERSON REALTORS—The Largest Selection of New Homes in Seattle

SOUTH END
Entry No. 2

BOW VISTA

by
HEBB and NARODICK



Mary Gail Fisher
Miss Bow Vista

**GI or FHA TERMS
AVAILABLE**

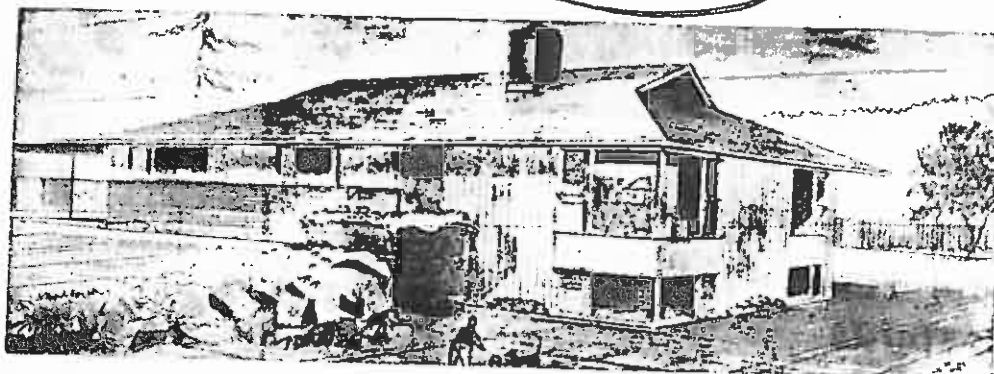


\$10,250 to \$12,600

A symphony of space and color . . . 7 sunburst rooms all on one floor . . . 3 bedrooms, 10-ft. raised, hearth fireplace, rustic beam ceilings . . . all on large lots near wonderful new schools. These homes have a sweeping mountain and territorial view. Plus an area of winding paved streets.

2 Model Homes furnished by Southland

SOUTH END
Entry No. 3



VALLEY VISTA

by HEBB and NARODICK

\$10,250 to \$11,950*

* With Basement



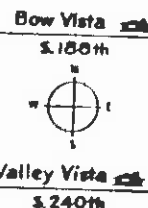
Dan Narodick



Ross Hebb

Two of Seattle's best known home-builders Ross Hebb and Dan Narodick, have teamed together to bring great new residential districts to Seattle's rapidly growing South End. Fine homes are their pride and joy.

SEATTLE-TACOMA AIRPORT
SEATTLE-TACOMA HIGHWAY



DIRECTIONS:

BOW VISTA: Drive south on Highway 99 just past the Seattle-Tacoma airport to S. 180th. Turn left (east) and follow the MacPherson signs or call CH. 1000

VALLEY VISTA: Drive south on Highway 99 to S. 240th Street. Turn left (east) on 240th and follow the signs to 2002 S. 242nd or call CH. 1000

We wish to thank the following firms and individuals for their part in the development of Valley Vista

- Herman & Schramm
FLOOR COVERINGS
- Mutual Materials
BUILDING STONE
- Thayer Floor Co.
- South Seattle Plumbing Co.
- Excellis Woodcraft Co.
- Northwest Kitchens, Inc.
- Domestic Mfg. Co.
FURNACES
- J. M. Guernsey & Co.
PAINTER
- Town & Country Dist.
GLIDE ALL DOORS
- W. P. Fuller & Co.
- Midway Asphalt Co.
- Graystone Concrete Products Co.
- Beckstrom Electric

Modern Heat With OIL Heat—

for sale by MacPHERSON REALTORS — The Largest Selection of New Homes in Seattle

SOUTH END
Entry No. 4

PARADE OF HOMES



Jeanne Miller
Miss Suburban View

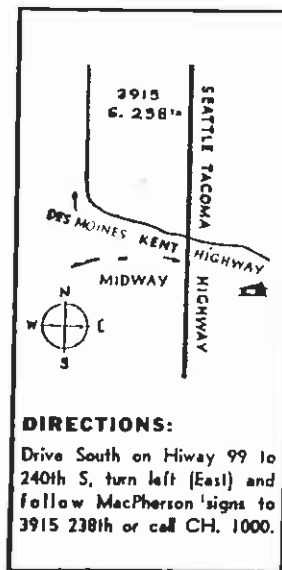


SUBURBAN VIEW

Monterey Ranch Ramblers
by
NELSE MORTENSEN & CO.

Suburban View . . . a beautiful new South End Community of 22 cedar ramblers on massive 1/4-acre view lots. These Monterey Ranch Ramblers have 3 bedrooms, den, glass beauty shower doors, tile baths, modern kitchens, carports. The tract has paved streets and circular driveways.

0 Down G. I. Old F. H. A. Terms
from **\$10,950** furnished by Iverson's



F. Henderson



Nelse Mortensen

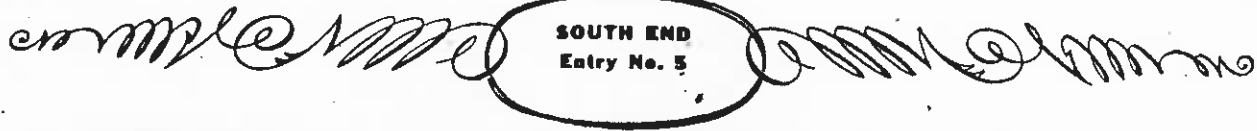


Cliff Mortensen

Nelse Mortensen & Co., Inc., one of Seattle's oldest and largest construction firms are back in the limelight of the city's home building picture. Best known for quality home construction this company is also known for the high standard of commercial and school construction both in the Northwest and Alaska.

We wish to thank the following firms for their part in the building of Suburban View home entry: W. P. Fuller & Co., Glendale Electric, Shoblud Lumber Co., Hollenbeck & Sather Co. Moen Faucets, Midway Asphalt Co., Schweiger & Herr Septic Tanks.

for sale by MacPHERSON REALTORS -- The Largest Selection of New Homes in Seattle



SPARKLING NEW DESIGNS

by Tom Gillespie

New homes with wide open rambling three bedrooms that feature the most revolutionary kitchen in Seattle and a must see for every housewife! Here you'll find all of the features of tomorrow for luxury living today. See a Gillespie home soon for sure!



0 Down GI FHA Terms \$11,950



Completely furnished and awaiting your inspection during the Parade of Homes!

TOM GILLESPIE

Seattle Master Builder, is noted for his high quality custom craftsmanship on all his sparkling designed homes. One of the top builders of the city, a visit to one of his open houses would be a highlight!

We wish to thank the following for their part in construction of these homes:

- Northwest Kitchens, Inc.
- Roscoe Manufacturing, Inc.
- Valley Glass Co., Kent
- Herman & Schram, Floor Coverings
- Moen Faucet

SEATTLE TACOMA HWY.

S. 200TH

DIRECTIONS:
Drive South on Hwy 99 to South 200th, turn left (East) and follow the MacPherson signs to 3048 S. 201st or call CH. 1000.

See KITCHEN APPLIANCES

by

GENERAL ELECTRIC

in

Tom Gillespie's Model Home

Famous for

- ★ Lasting Beauty
- ★ Efficiency
- ★ Economy

Modern Heat With OIL HEAT—Your Best Buy Always

for sale by MacPHERSON REALTORS — The Largest Selection of New Homes in Seattle

SOUTH END
Entry No. 6.

NORMANDY VISTA



\$14,250

Minimum G.I. or FHA Terms

See this completely furnished modern contemporary today. Built by Master Builder Lloyd E. Farrell, this spacious 3-bedroom home that's available at low, low terms, has beamed ceilings, cabinet kitchen with generous use of Formica, playroom and it's on large grounds in a wonderful new district.

Modern Heat With OIL Heat

Your Best Buy—Always

We wish to thank the following: Lomax Insulation; Smith-co Heating; Williams & Krone, Drywall; Glendale Lumber and Moen Faucet.

Lloyd E. Farrell

A member of the Master Builders, Farrell is one of the most qualified builders in the South Seattle area. Truly an artist in the quality construction of fine homes in the \$14,000 to \$14,000 price bracket, Farrell can build a small 2 bedroom contemporary for as low as \$4950.



Drive South on 1st Ave. South to South 192nd, turn left and follow MacPherson signs to the model home at 19209, 2nd S. Or call CH. 1000.

Drive South on 99 to South 312th, turn right (west) and follow MacPherson signs to the model home.

SOUTH END
Entry No. 7

Soundcrest by Marckx & Williams

NEW HOMES AT FEDERAL WAY

The newest and best planned development in the Northwest . . . a community of 3 and 4 bedroom homes adjoining the largest shopping center south of Northgate. Open this week-end for the first time . . . Don't miss seeing the finished display home at Soundcrest on your Parade of Homes tour.

***10,700 to *15,200 3 and 4 Bedrooms, Family Rooms**



We wish to thank Smith Brothers Heating Co. of Kent, Wash., and Midway Asphalt Company.

for sale by MacPHERSON REALTORS—

The Largest Selection of New Homes in Seattle

roken for Church

sum will serve as Eagle's Hall. The church has a seating place until membership of about 900. At the same time, the nave or steeple is being built. Its outline is when the first five it will cost \$400,000. Mr. O'Connor said the will separate the church from the school. The church has begun here in 1948 and is expected to be completed within a year.



in the strip being heights are photo.

S

oses

able sizes range in diameter. The elevation is supports of diff. They are placed when the black and the home modern and at moment of installation is almost

leted

7, 1953. During of 1953-54 work as sheet, snow, ro temperatures concrete pour-

ter' approached, contractor came proved to be a sixteen foot posts in a completed (ing ridgepoles set wide and 6) stretched over portable heaters t each end improved. (ing d in shirtsleeves nperatures were

was completed, as raised to the d hospital in 300 rooms, with able with thibbe ern "Stateside" res are an air d a helicopter between the hos ga are crumbl earthquake pro-

place blocks perfectly. But don't turn down the idea just because you go for modern. From floor to top the hatch is 31 inches. The unit is 14 inches deep and 46 inches long. And this size is just about perfect for placement in any room. It is large yet not too large. (Hill bedrooms having

Sale of 3 Duplexes Reported

The sale of three double brick duplex buildings was reported yesterday by John F. Blake, owner of A. A. Realty. Blake, president of the North End Brokers' Association, said there is a demand for luxury in some dwelling properties which are close to transportation and shopping areas. The firm specializes in quality income properties in the North End. The duplexes sold to single closed buyers, included one at 15116 W. 63rd St. sold for the number 1044 Hogan and two at 7716 48 24th Av. N.W. and 7359 14th Av. N.W. sold for August Waldeck. The buildings sold for from \$25,000 to \$28,000 each. Negotiations were by Mrs. Freda Lars, wife of the realty company.

Building Pace At Lake Hills Accelerated

Developers at Lake Hills a completely planned community which opened two weeks ago near Bellevue are stepping up their building pace to keep ahead of sales, they reported yesterday. A total of 75,000 persons have visited the housing development since it was opened. **Lowland Homes and Bell & Valdez** builders at the project, have 50 homes under construction. More than 50 homes have been sold in the two-week period. The builders are expediting the platting of the third division to be built there. Plans are being finished for the building of a second school in Lake Hills which may be a junior high school. **Ruskin Fisher**, land developer representative, said. Homes in the area are selling for prices between \$10,800 and \$15,700. Down payment terms under G. I. contracts still are available.

Prizes Offered School Teachers

A contest for elementary teachers, sponsored by the National Association of Home Builders, was announced yesterday by Ernest B. Norman, Jr., chairman of the association's education committee. National prizes of \$500, \$250, and \$100 will be awarded. The contest which opened Thursday and closes May 1, 1956, will be on reports from teachers on "How I Teach Housing in My Grade." Information may be obtained from the Seattle Master Builders Association, 1930 Sixth Av.

Water Project Begins

CAIRO, Egypt, Sept. 3 (AP) — A \$45,000,000 project is under way to bring clean water to Egyptian villages by 1958. Up hill (Today), architectural trade to now, the Egyptian peasant magazine published in Paris, has depended on Nile River, water for drinking and washing (ing were shown.

FOR STORAGE: This handsome provincial hatch is **DIH** Baker's easy-to-build project. It is the answer to the home's storage problem.

room (ditch them) and even drawers above the cavernous the kitchen might offer the right site in your home. The addition of two handy

12 Finalists In Builders' Queen Contests

Twelve finalists have been selected in the competition to select Miss Parade of Homes and Miss National Home Week. Harold C. Kahan, chairman of the Seattle Master Builders Association, sponsors, contest, an hour of yesterday. The 12 selected by a secret committee on a basis of its business, character and appeal. **EXA** Kenneth sponsored by Wilson Phillips, sponsored by Shalene Kuse, sponsored by Washington Electric Co., sponsored by Rose Marie Nelson, sponsored by Foster & Wadsworth, sponsored by Duane Schuster, sponsored by H. K. Strickland, sponsored by Guy H. Fisher, sponsored by Peterson & La Pierre, sponsored by James McDonald, sponsored by The Ragan Co., builder, Jackie McMahon, sponsored by Beckstrom's Electric Co., Barbara Nelson, sponsored by R. E. McCormick & Sons, Dolores Erickson, sponsored by Bell & Valdez, Gail Fisher, sponsored by Hebb & Nordick Construction Co., and Jackie Halbert sponsored by the Coast Mortgage & Investment Co.

Shopping Center Has Moving Walk

A \$15,000,000 shopping center in West Covina, Calif., will have a mechanical sidewalk, believed to be the first movable sidewalk in California. The 150-foot long six foot wide walk will travel in a 10 percent grade at one and a half miles an hour, reported **Architectural Record**, a trade publication.

Court Apartment And Commercial Building Sold

Two sales of income property made recently through the investment department of MacPherson Realty, were announced yesterday. A five-unit Roman brick court-apartment house at 7900 Eighth Av. N.W. was purchased by Carrie Ohn from Mr. and Mrs. Arthur J. Morris. The property was held for \$55,000. The **Lohman & Clark Building**, 13711 Bothell Way, was purchased as an investment by Earl C. White from the estate of Leona Maude Kandle. Burns, Poe, Tacoma attorney, is trustee. The one-story and basement concrete and block commercial building was priced at \$30,000. Ken DeShon, investment broker for MacPherson's, negotiated both sales.

Tree Won't Wait

GRAND RAPIDS, Mich., Sept. 3 (AP) — Charles B. Polason called a tree-service firm to send someone out to cut down a large box elder in his back yard. He had discovered the tree's trunk was rotted. The workmen arrived 15 minutes after the tree crashed, damaging Polason's roof, smashing a sun porch and breaking a rear window.

Seattle Building Noted in Paris

The Seattle architectural firm of Lawrence & Hazen came in for international notice recently when the firm's new offices at 8626 Roosevelt Way were featured in an article in **Aujourd'hui** (Today), architectural trade magazine published in Paris. Six photographs of the building were shown.

Easy-to-read instructions help you assemble the unit. A full material list, diagrams of most steps of the project and suggested materials are included. Only a few basic tools will be needed. (Copyright 1955)

Fix It Yourself: Fence-Post Repair Can Be Done Easily



For the second method, obtain a couple of pieces of 2-inch x 4-inch stock, sharpen one end and then drive them into the ground on each side of the post. These should go down far enough so they are solid. Hold a 2-inch x 4-inch board over the top and drill right through the center through the four post and through the 2x4 on the other side. Then long carriage bolts can be run through these holes and fastened tight with a washer and nut.

The exposed ends of the 2 x 4 should be cut off at an angle after they are installed so they will shed water and the wood should be treated with a preservative before it is installed.

In the case of the angle iron this should be cleaned with a solvent such as benzene before it is set into the ground and given a prime coat of red lead. After it is installed it can be given a coat of paint to match the post.



ENJOY fun and privacy on Treasure Island

Discover for yourself, this long Labor Day how little it costs to buy a beautifully wood

Restaura Ten-Year

A new ten-year old restaurant in the heart of the city is the new **Howard & A.** Howard & A. is a new and popular place to eat. It is the new of the city. It is a day evening in

Howard & A. is a new and popular place to eat. It is the new of the city. It is a day evening in

ASP PA

Established NORTH ASPLE RAINI (Formerly B)