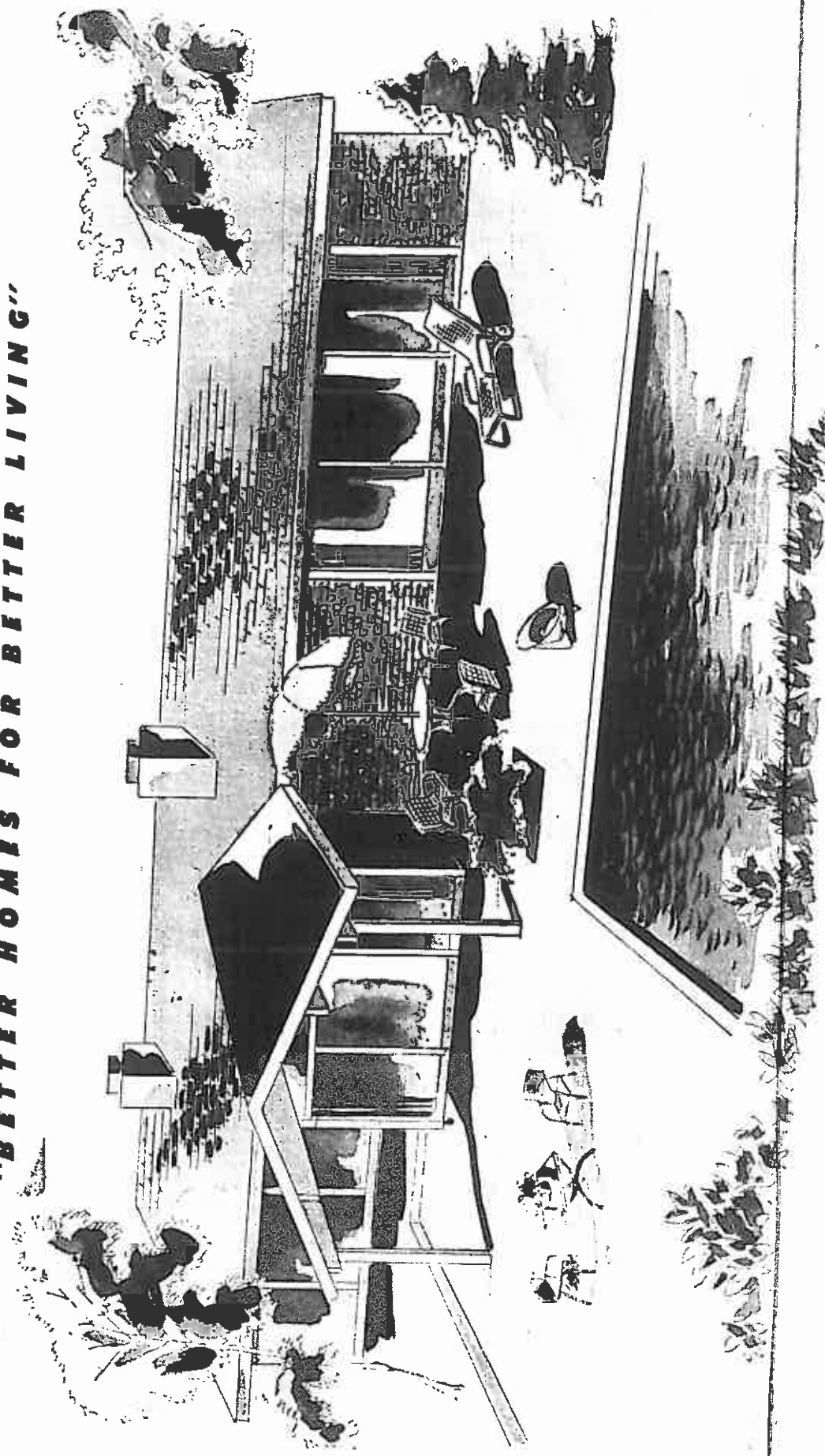


The Seattle Sunday Times
Sunday, September 7, 1958

1958 Parade of Homes

"BETTER HOMES FOR BETTER LIVING"



Building Progress Gives Best in Living

BY MARGERY R. PHILLIPS

THE 1958 Parade of Homes, contributing to the economy of the Pacific Northwest by presenting better living to its residents, is fortunate in being the support of the Seattle Real Estate Board, the American Institute of Architects, the American Institute of Decorators and the Seattle Public Schools through its co-sponsoring program sponsored by the Home Builders' Association of Greater Seattle and The Seattle Times.

Leader in these groups continually interested in the development of our beautiful Pacific Northwest, unsurpassed in scenic topography, rolling landscapes, magnificent vistas and moderate climate, have worked together to achieve the very best in residential design and construction. For the past ten years members in these professional and business groups have appreciated the home owners' need for individuality in design, distinctive site planning, attractive community developments and quality construction methods which assure a family rich dividends in happy living and wise investing.

Recognition Won

These leaders have harnessed their talents and their knowledge and produced residential areas of outstanding quality, as indicated by national recognition accorded time and again in various exhibitions and competitions.

The home owners' desire for better living has been recognized. Architects, designers, builders and real-estate men alike have endeavored to guide home buyers not only in the sites of their homes but in the selection of acceptable design, adequate living facilities and good construction. Many have sensed the need for economical construction without sacrificing quality in construction.

A variety of designs and plans have been produced, reflecting individual tastes and relating pleasingly to the particular home-building site. Residential communities, ranging from a handful of homes to several-hundred dwellings, have been developed adjacent to schools, churches, shopping centers for comfortable and convenient living.

New Concept Noted

In the past ten years there has been a new concept in living in America. As a result we have more money to spend, more leisure time, and we demand more in comforts and conveniences. Luxuries in 1949 are often necessities.

(Continued on Page 2, Column 7)

BY ELIZABETH WRIGHT EVANS

YOU HAVE opened our eyes to a whole new concept of contemporary living," said the president of the Seattle School Board last week after a preview tour of some of the new homes in the 1958 Parade of Homes that will open to the public today.

Mrs. Henry B. Owen, School Board president, and all other members of the board, Dietrich Schmitz, Bernard Reiter, Lyle Goss and Dr. Edward Palmason, visited several homes designed for indoor outdoor living. With them went two wives of former University of Washington presidents, Mrs. Raymond B. Allen of Los Angeles and Mrs. Henry Schmitz.

Other Housing Leaders

Later the preview tour party and their Seattle Times guides joined officers of the Home Builders' Association of Greater Seattle and the Seattle Real Estate Board for luncheon in the Rainier Club. There they met other leaders in the housing field here, including Harrison Overturf, president of the Washington Chapter of the American Institute of Architects, and Prof. Arthur Hermann, dean of the University of Washington College of Architecture, as well as two Seattle public school administrators, Supt. Ernest Campbell and Vice Supt. Bernard Chichester.

The educators were chosen as Parade of Homes preview guests this year because of the success of the second annual model-home-building contest for junior- and senior-high-school pupils here. At the luncheon, the guests saw contest examples of small home models constructed by boys and girls in public-school vocational and art classes.

Contest Results Shown

The model-home contest was established last year by the Builders' Association and The Times in close cooperation with the schools so that interested teenagers could learn about good house design. The contest sponsors, finding the public-service contest a success and an excellent adjunct to the annual Parade observance of National Home Week, wanted to show Seattle School Board members its results, as well as to present some of the fine new houses now being designed and built here.

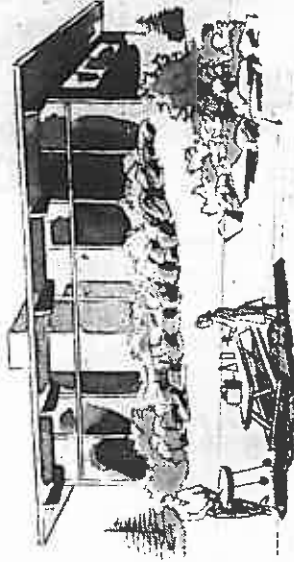
The School Board members, each of them from long-established Seattle families, each of them busy with volunteer duties for the schools and other civic causes, admittedly have not visited new housing developments the past few years. Thus, they concurred with Mrs. Owens' appreciative statement, "You have opened our eyes."



TINY PARADE HOME: One of the many model houses constructed by school pupils in a model-house contest this year was examined last week by three experts, from left: Prof. Arthur Hermann, dean of the University of Washington College of Architecture; Harrison J. Overturf, president of the Washington Chapter of the American Institute of Architects, and Ernest Campbell, superintendent of the Seattle Public Schools. The model-house contest is a prelude to the annual observance of National Home Week here.

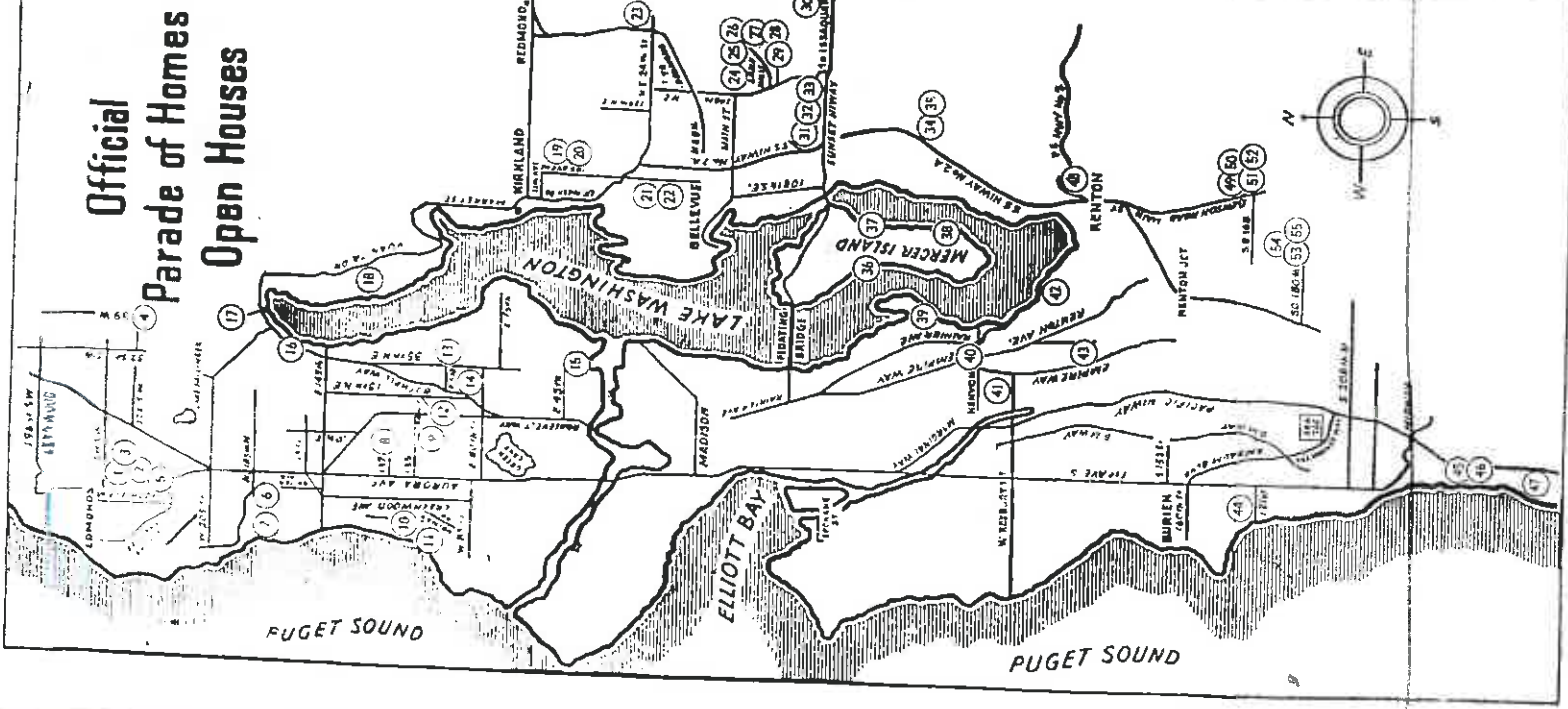


INTERESTING KITCHEN: Mrs. Henry B. Owen, only woman member of the Seattle School Board group which previewed the Parade of Homes last week, was interested in this unusual wall oven, built into a huge rock wall and topped by a 10-foot copper hood. This home was shown to the public, along with 60 other Parade homes, all this week.



Directory for 1958 Greater Seattle Parade of Homes

Official Parade of Homes Open Houses



NORTH END PARADE OF HOMES ROUTE

1. STEWART & POTTER CONST. CO., 8107 21st St. W., Edmonds
2. K and B CONST. CO. (Seattle Village)
3. KULSTROP HOMES, INC. 1142 Pine St., Edmonds 19th and Elm Sts., Edmonds (Twin View Estates)
4. ALBERT BALCH, Community Bldr., 22201 39th Ave. W. (Edgar Grove), Burien
5. DEJ. MAR HOMES, INC. 23250 97th West, Edmonds
6. KAY ANDERSON HOME BLDRS. 17821 1st Ave. N. W. (Evergreen Lane #3)

EAST SIDE PARADE OF HOMES ROUTE

7. HOWARD C. McNICOLL, BLDR. 202 W. 176th Pl. (Terrace Lane)
8. W. W. GORDON, BLDR. 13057 Meridian Avenue
9. HEGGEM CONST. CO., INC. 525 E. 124th (Sherlynn)
10. ARNE G. GOEDECKE, BLDR. 15251 3rd Ave. N. W. (El Dorado Lane)
11. LAGERQUEST BROS., INC. 10245 11th Ave. N. W. (Green Arbor)
12. BUL-TWELL CONST. CO., INC. 10609 10th Pl. N. E.
13. OMAR H. BROWN, BLDR. 3908 E. 160th St. (Alicia Park)
14. ALBERT BALCH, Community Bldr., 8600 27th Ave. N. E. (Wedgwood)
15. DONALD N. McDONALD, Jr., BLDR. 3613 F. 43rd St. (Laurillard St.)
16. ALBERT BALCH, Community Bldr., 16225 39th N. E. (Sheridan Heights)
17. WALTER H. BRICKSON, BLDR. 18719 62nd N. E. (Kenite Views)

SOUTH END PARADE OF HOMES ROUTE

18. DONALD N. McDONALD, Jr., BLDR. 15318 62nd Place N. E. (Ungleswood)
19. E. L. FLOWERS, Bldr.-Realtor 10619 N. E. 46th (Wildwood Lane)
20. E. L. FLOWERS, Bldr.-Realtor 10632 N. E. 45th (Wildwood Lane)
21. ROBINSON & STEWART, INC. 9804 N. E. 22nd (N. Bellevue)
22. ROBINSON & STEWART, INC. 10638 N. E. 18th St. (N. Bellevue)
- 21-26 BELL & VALDEZ, INC. Treadwater Lane, Lake Hills (S. Homes Entered)
27. HEHR & NARODICK CONST. CO., INC. 15622 Eastside Hill, Blvd. (Take Hills)
28. DEL MAR HOMES, INC. 16020 Eastgate Hills Blvd. (Lake Hills)
29. GREGG WILSON, CO. 12119 S. E. 19th (Isingstien)
30. BANNER HOMES, INC. 2101 127th S. E. (Woodridge)
31. ROBINSON & STEWART, INC. 2512 127th S. E. (Woodridge)
32. IRA J. EDWARDS CONST. CO. 5054 116th Ave. S. E. (Woodridge)
33. JAMES D. BURNS, BLDR. 5009 177th S. E. (Newport Hills)
34. ALBERT BALCH, Community Bldr., 8447 S. E. 44th St. (Mercer Island)
35. ARNE G. GOEDECKE, BLDR. 9315 S. E. 43rd St. (Mercer Island Shore Club)
36. ELMER V. MOSS, BLDR. 6626 88th Ave. S. E. (Mercer Island)

SOUTH END PARADE OF HOMES ROUTE

39. JOHN E. CONNER, BLDR. 6408 Hampton Road (Uplands)
40. GOODWIN HOMES, INC. 8101 49th Ave. South
41. JOHN E. CONNER, INC. 9110 57th Ave. South
42. JOHN E. CONNER, INC. 8029 South 113th St. (Lakeridge)
43. ALBERT BALCH, Community Bldr. 6016 S. 120th St. (Panorama View)
44. E. B. VICK, BLDR. 16619 Sylvester Road
45. J. W. NIKEY, BLDR. 23418 27th S. (Delrose Manor)
46. HEHR & NARODICK CONST. CO., INC. 25013 25th Ave. S. (Salt Air Hills)
47. DONALD J. POMEROY, BLDR. 29803 8th Pl. S. (Marine Hills)
48. ALBERT BALCH, Community Bldr. 3418 10th Place N. (President Pl.)
- 49-50. LEONARD HOMES, INC. S. E. 168th and Benson Hwy (2 Homes)
- 51-52. PETERSON DEVELOPMENT CO., INC. S. E. 168th and Benson Hwy (2 Homes)
53. IRELAND HOMES, INC. 17420 Talbot Rd. (Talbot Hills)
54. IRELAND HOMES, INC. 17412 Talbot Rd. (Talbot Hills)
55. IRELAND HOMES, INC. 17103 Talbot Rd. (Talbot Hills)

Progress in Building Gives Pacific Northwest Best in Living Comfort

(Continued from Page 1 this section)

sities in 1958. The Parade of Homes reflects this change and welcomes your inspection of the houses which have been designed for better living.

For example, ten years ago an open plan was an innovation... a sliding glass door... auto-matic laundry facilities... much to be desired... Built-in kitchen appliances such as oven, dishwasher, freezer, refrigerator, barbeque de luxe drawers. Today we accept the open plan as a matter of course... American families find so rewarding... but as an answer to rising building costs... Multiple use of various living spaces in our servantless homes not only cuts down the cost of construction but eliminates maintenance, repair and redecorating of added square footage.

Comfort is Emphasized

Site planning includes good arrangement of activity areas both indoors and out. Sliding glass doors and walls open to outdoor living areas, suggesting a casual, comfortable way of life. Automatic appliances allow the entire family more free time to pursue education, to pursue the arts, to enjoy sports. Not only do automatic devices assist tremendously in food preparation, laundering, cleaning but life is made more pleasant by such entertainment advances as music piped throughout the house, television in several areas, patio and pool for healthful living.

Do we, in the Pacific Northwest, enjoy better living? Indeed we do! Ten more years will bring about additional developments.

But, while we are waiting, let us enjoy that wonderful opportunity to own a new home. You will be convinced it's the best investment the family can make when you visit the 1958 Parade of Homes.

New Realty Office Opened

A new real-estate office, E. Gray, will be known as has been opened at 9617 Fir-Karl's Bridge Realty. The office is located on Aurora Ave. west of Aurora, just west of the Snohomish county line. The office, owned by Karl, has four salaried men.

WRITTEN GUARANTEE!

LAWN

AS LOW AS \$361 PER MONTH

WITHOUT OBLIGATION

FOR INFORMATION

CALL

PR. 8-2191

GL. 4-4433

OR MAIL

COUPON

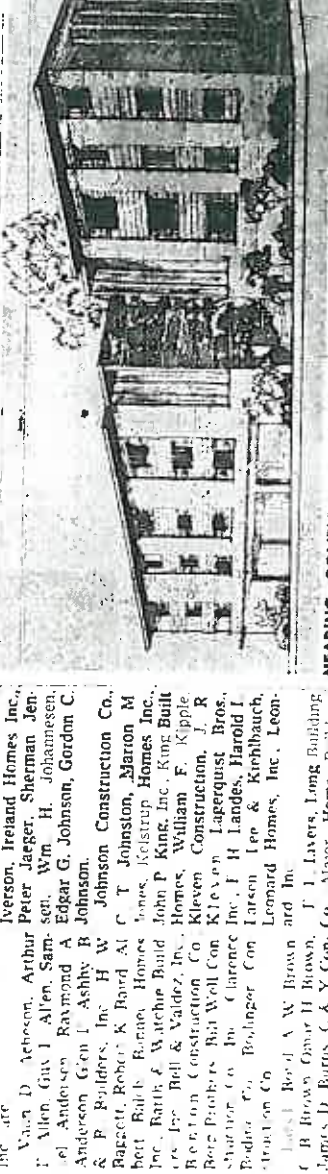
TODAY

Have a Lawn to GROW About!

Sprague-McDowell

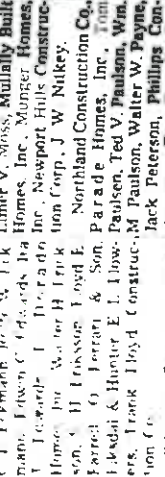
National Home Week Supported by Builders of Greater Seattle Area

Home Builders in greater & Narodick Const. Co., Inc., Construction Co., Inc., Walters Construction Co., Inc., Williams Construction Co., Inc., Taylor Construction Co., Inc., George B. Watts, Wedge Co., E. H. Wilson, Gregg Williams, Inc., W. W. Gordon, Inc., DeJ. Mar Homes, Inc., Albert Balch, Community Builders, Inc., J. Smith, Inc., W. Saver, F. C. Tschudin, E. B. Vaughan, E. Axel Wickstrom, Clarence Woerner, Henry W. Weimer, Swanson, Tanglewood Homes, B. Vick, Virginia Lee Homes, W. Wickstrom, Harold Wick, L. G. Yeaton.



PLANNED: This bowling facility, to be named the Jonrick Bowl, will be situated in Redmond in a planned shopping center adjacent to the golf course. Jonrick, Inc., of which George H. Dimick is president, will be the owner. Construction will start in 30 days, with completion scheduled in about five months. The land and building, equipped, will cost some \$400,000. The building was designed by Thomas Albert Smith, architect, S. H. Leland is the general contractor.

The Better Home & Garden Furnace for 1958



THE GREAT NEW WESTINGHOUSE ALL SEASON Air-Conditioning Furnace

Oil or Gas Furnaces from \$288

UNIVERSITY SHEET METAL WORKS

1318 Howell St. Estimating Dept. No Down Payment Free 53 Years Selling Furnaces in Seattle

Can this be yours? ... \$4,300

- ★ Designed to meet individual requirements. Each unit is customarily blended to fit individual tastes.
- ★ Quality, professional, guaranteed construction. Cut glass coping. Fractional hp. Washable interior finish.
- ★ Spooling clear, pure water maintained continuously with deaerating filtering system. Blending stream accessories.
- We build Residential, Municipal, Club & Motel Pools. Regular Pool Maintenance Service - Pool Equipment Sales.

Pacific Pools

918 Blanchard MA 2-3888 No obligation

OFFICIAL PARADE ENTRIES MacPherson's, Realtors



\$31,500

Official Entry No. 11

Directions: Drive west from Aurora Ave. to 12th N. W. 1025

12th N. W. Call MacPherson's for information

The very best in quality range

over and differentials are used

in the MacPherson's Parade of

homes which. General Electric

colored appliances have been

selected for these three like homes.

Home the beauty that the appli-

cations add to your new home at

will impact the highest on your

Sole lot in town. Consider it

BRILLIANT KITCHEN.

Available at all the better homes.



\$17,750

Official Entry No. 18

Directions: Drive west from Aurora Ave. to 12th N. W. 1025

12th N. W. Call MacPherson's for information

The very best in quality range

over and differentials are used

in the MacPherson's Parade of

homes which. General Electric

colored appliances have been

selected for these three like homes.

Home the beauty that the appli-

cations add to your new home at

will impact the highest on your

Sole lot in town. Consider it

BRILLIANT KITCHEN.

Available at all the better homes.

\$29,500

Official Entry No. 13

Directions: Drive west from Aurora Ave. to 12th N. W. 1025

12th N. W. Call MacPherson's for information

The very best in quality range

over and differentials are used

in the MacPherson's Parade of

homes which. General Electric

Home Builders of Greater Seattle Area

- Alfred A. Johnson, Arthur Peter Jaeger, Sherman Jensen, Van D. Vehecon, Raymond A. Edgar, G. Johnson, Gordon C. Anderson, Glen I. Ashby, R. Johnson.
- Robert K. Baird, Al C. T. Johnson, Maroon Construction Co., Inc., Ray B. Roman, Homes, Kelstrup Homes, Inc., Joe Barth & Walter Build, John P. King, Inc., King, Built Inc., Bell & Valdez, Inc., Homes, William F. Kipple, Berg Builders, Bert Wolf, Con. Klevon, Construction, J. R. Shaver, Co., Inc., Clarence Inc., I. H. Landes, Harold I. Pedersen, Co., Bolinger, Con. Larson, Lee & Kirchbauch, Construction Co.
- Jack B. Brown, A. W. Brown, and In.
- James D. Burns, C. & Y. Con. Co., Major Home Builders, Construction, Chairman Const. Ludwig Mayer, F. R. McAbbe, Inc., W. W. Gordon, Inc., DeJ. Mar Homes, Inc., Albert Balch, Community Builders, Inc., J. Smith, Inc., W. Saver, F. C. Tschudin, E. B. Vaughan, E. Axel Wickstrom, Clarence Woerner, Henry W. Weimer, Swanson, Tanglewood Homes, B. Vick, Virginia Lee Homes, W. Wickstrom, Harold Wick, L. G. Yeaton.
- James D. Burns, C. & Y. Con. Co., Major Home Builders, Construction, Chairman Const. Ludwig Mayer, F. R. McAbbe, Inc., W. W. Gordon, Inc., DeJ. Mar Homes, Inc., Albert Balch, Community Builders, Inc., J. Smith, Inc., W. Saver, F. C. Tschudin, E. B. Vaughan, E. Axel Wickstrom, Clarence Woerner, Henry W. Weimer, Swanson, Tanglewood Homes, B. Vick, Virginia Lee Homes, W. Wickstrom, Harold Wick, L. G. Yeaton.

Home Builders in greater & Narodick Const. Co., Inc., Construction Co., Inc., Walters Construction Co., Inc., Williams Construction Co., Inc., Taylor Construction Co., Inc., George B. Watts, Wedge Co., E. H. Wilson, Gregg Williams, Inc., W. W. Gordon, Inc., DeJ. Mar Homes, Inc., Albert Balch, Community Builders, Inc., J. Smith, Inc., W. Saver, F. C. Tschudin, E. B. Vaughan, E. Axel Wickstrom, Clarence Woerner, Henry W. Weimer, Swanson, Tanglewood Homes, B. Vick, Virginia Lee Homes, W. Wickstrom, Harold Wick, L. G. Yeaton.



IN-LAWS: Mrs. Henry Schmitz and her brother-in-law, Dietrich Schmitz, were amazed to find a small waterfall flowing from a piece of sculpture when they visited a Parade of Homes house last week. This room, with a stone floor and a trans-

Savings for Home-Buying Commended

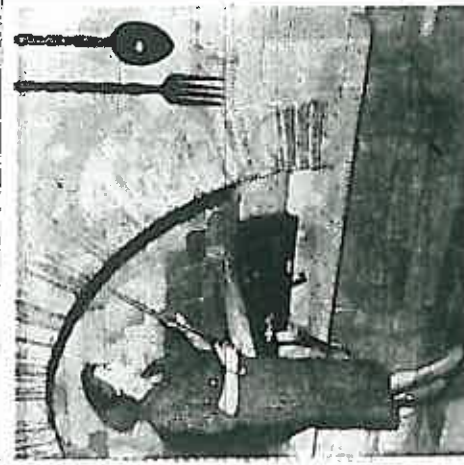
Though we bankers preach officers when he mused withdrawal as a loss to the uplift at every opportunity about the part that thrift has bank but rather as an asset there's one bank withdrawal played through generations of to the persons involved and on which we look with no "As a banker," Schmitz to the entire community. dismay," said a prominent said, "I know that the ac- Seattle bank president last cumulation of enough money positions to save for any num- week. ber of reasons from Christ-

Dietrich Schmitz, chairman of the most important mas clubs to vacation plan of the Washington Mutual factors in our American fam- ing," said Schmitz, "but the Savings Bank, wore his fly life. Consequently, when most important reason a School Board Mortar Board a couple withdraws savings banker can possibly give for on a preview of Homes tour, to make what may be the saving is the accumulation of but he flipped the brim most important, investment funds for acquiring a home of opportunity to become bank of life, we don't regard the one's own."



THE ROOF'S OFF: To better inspect one of the small model houses designed and built by a Seattle school pupil, three interested men removed the base roof when they met last week at a Parade of Homes tour. From left, James Burns, chairman of the Parade of Homes build-

ers committee; Vernon Brice, president of the Seattle Real Estate Board, and Bernard Reiter, of the Seattle School Board, whose members keep abreast of school activities like the model-house building contest for junior- and senior- high-school pupils.



BARBECUE ARCH: Mrs. Raymond B. Allen, who was a Los Angeles delegate to the Children's Theater Confer- ence here last week, took time to see Seattle's housing changes since the left Seattle six years ago. Here she examined the installation in a large family-room barba- cue where stone in soft pink hues blended with warm wood tones. Mrs. Allen, who noted many changes in Seattle home design, was especially interested and ab- served because her eldest son, Tony, will receive his master's degree in architecture next June.

SEE Rotogravure Page 45

then CALL EA. 2-8981 for a

free home-heating survey and estimate on the new American-Standard gas hot water boiler.

Installed for as little as \$565

• Easy term, 25-YEAR GUARANTEE on cast iron sections in working order of the boiler.

Rational Gas is Safe—Clean—Economical
MT. BAKER PLUMBING & HEATING
EA. 2-8881 AT. 3-6093 GAS PIPING & APPLIANCES

SEE Rotogravure Page 45 then **CALL PA. 5-6700** for a free home-heating survey and estimate on the new American-Standard gas hot water boiler.

See Us About Your Heating Problems

Mutual Materials COMPANY

Congratulates the Architects and Contractors on the **PARADE OF HOMES**

Mutual Materials COMPANY

1200 - 8th S. NORTH END . HU. 6-2721
KENMORE . HU. 6-2721

MAIN OFFICE MU. 2-2869

Child Wants Own Bedroom, Mothers Find

Together it is fine but not her own room, at least by the gate, "want their own little" when it comes to putting time he starts to school, if the kingdom, their own room children in the same bedroom; budget and house plan will "They like to say, 'This is my room' in the 12 months HARTFORD, Conn. — (U. P.)—The top floor of a de- sus of 100 women delegates are not feasible each child comes," said another mother, ing \$977,710 from its alum- ment store here in the leaving, held in Washington) bed, desk, storage area or Or "my two girls are seven- not be conditioned. That's their office

THE B.P.M. (Small Home Sales) STORE
MacDOUGALL'S
Ask about our money Convenient Credit Plans

MacDougall's Is Seattle.

Headquarters Youngtown Sinks



Sale! Floor Samples Youngstown Sinks

Some with Scratched Finish:

Example (Shown Left) Model S-42 Regularly \$114.95

No Down Payment on Approved Credit... Easy Monthly Terms. \$68

SEE

Save \$50!

Trade-In Sale

Deluxe Speed Queen Washer

Model F701P, usually \$199.95 Less trade-in for old washer... \$50.00

You Pay Only \$149.95 (with your old washer)

- Maximum Washer Guarantee!
- Sturdy Double Wall Construction!
- Efficient Back-Shaped Tubs!
- Automatic Self-Deaning Pump!
- Super Duty Aluminum Wanger!
- Trouble-Free Mechanism!
- Convenient Speed Queen Trimmer!

SAVE \$50 Now... at your nearest MacDougall store.

• Appliances... Lower Floor

NOW... A COMPLETELY Automatic METHOD OF FLOOR & RUG CARE!

THE REVOLUTIONARY NEW AUTOMATIC DISPENSING

Shetland floorsmith Pays for itself in 1 using

CLEAN ALL YOUR RUGS AND ALL YOUR WALL-TO-WALL CARPETING YOURSELF! — PROFESSIONAL! Shampoo a 9x12 rug in less than an hour for less than \$10 the easy Floorsmith way! ONE ROUND OF RUG CLEANING MORE THAN PAYS FOR THE PURCHASES.

• AUTOMATICALLY DISPENSES RUG SHAMPOO! Safe for your most precious rugs because the fast-action formula will adjust automatically to every rug thickness and the automatic dispenser spreads a controlled flow of shampoo for thorough, gentle, power-cleaning that removes embedded dirt — not just surface soil.

• AUTOMATICALLY DISPENSES SCOURING SOLUTION! Easy, efficient power-slide, no-splash scrubbing action removes old, discolored wax and gets floor clean, bright and new-looking.

• AUTOMATICALLY DISPENSES FLOOR WAX! Sprays on a thin, even, coating of wax that polishes to a longer lasting, slip-resistant finish. Floor wax jets on the floor instead of going down the drain in weakly scrubwater.

Now Only \$59.95

YOU SAVE \$19.05

Compare with 2 Gallons of Professional Rug Shampoo and 2 Gallons of Floor Wax. You Save \$19.05!

Complete with 2 Pillsbury 5-Lb. Tubs of Rug Shampoo and 2 Gallons of Floor Wax. Complete with electric polisher.

COME IN AND ASK ABOUT OUR 30-DAY MONEY-BACK HOME TRIAL



1. RUGS & CARPETS 2. STEEL WOOL 3. SCOURING SOLUTION 4. FLOOR WAX 5. POLISHING

College Gifts, Gifts

NORTHAMPTON, Mass. — Smith College re- ceived \$1,488,248 in gifts and bequests in the 12 months ending June 30, 1959, includ- ing \$977,710 from its alum- ni. The top floor of a de- partment store here in the town is for the alum- ni. The store is for the alum- ni. The store is for the alum- ni.

Buy At MacDougall's 7 Stores

- Second and Pike... MA. 8-7700
- 4528 California... W.B. 3-8660
- 1823 1st Ave. S... MA. 4-4857
- 8121 Greenwood... ST. 3-8948
- Oakland... VA. 3-2626
- Lake City... FM. 3-3302
- Westaboo... NO. 3-8176

City Spectacles Years 3

Sunday, September 7, 1958

Developers Have Complicated Tasks

Many a Parade of Homes visitor today, inspecting new houses in well-planned developments, would be amazed at the complex and time-consuming work that went on years before a shovel was turned for a single house.

To get part of the story behind land development for authorities, Vernon Bruce, president of the Seattle Real Estate Board, and Dick Conner, land developer, for descriptive facts.

State, county and city regulatory bodies, some of them overlapping, concern themselves with land development to an extent that the business has become not only complex but highly specialized, Bruce said.

Site Is Important

Many factors enter into the choice of a site—its proximity to public transportation and shopping and the important availability of schools, both public and parochial.

The land developer must satisfy himself about the topography of the land for residential use also.

The next step is consultation with the City or County Planning Commissioners to determine whether the land may be zoned for residential use.

This having been determined, the developer may engineer the property and then is ready to begin his work with county road engineers to determine their attitude about his future tie-in with road patterns.

"Regarding sewers for an area of new homes," Bruce said, "the developer must try to annex his land to an existing sewer and water district or form one which will incorporate the area. If he forms a new one, he must get information from the County Health Department, the State Pollution Control Commission and the State Health Department about the erection of a sewerage-treatment facility and also the installation of sewer lines."

Complete Study Needed

In order to obtain approval for rough-grade roads of the various governmental agencies, the developer must engage an engineering firm, have a complete study made of the area and get a formal proposal outlining the entire sewer district.

Regarding water problems, Conner added that a preliminary cost analysis is established for water, sewer, electric-tank and storm-sewer systems. His proposal must show the proper authorities how the developer intends to install these facilities, how they and gas mains. And now the

developer can put on a self-sufficient basis, but until then, with underwriting the operating costs of both sewer and water utilities.

Now, perhaps, the F. H. A. comes into the picture if the homes are to be federally financed. The developer must present to the F. H. A. an overall development program including all proposed improvements.

"Now finally," says Bruce, "the developer is ready to start clearing his land in preparation for rough-grade roads and utility installations. He must be sure that his road specifications meet county or city engineers' requirements. When the clearing is completed and the roads down to grade, the sewer-district engineer's concrete must be installed."

"Roads," adds Conner, "are always surveyed and staked from the center line of the streets. The corners of each lot are staked as well as the storm sewers, water lines and gas mains. And now the

small shopping center for the area is proposed.



rich soil for lawns and gardens. Such equipment today makes this procedure a common practice among tract developers.

SAVE TOPSOIL: Modern earth-moving equipment like this huge scraper is used to skim topsoil on a new tract about to be developed, stockpile it for replacement after construction, and provide proof that it is financially feasible to install them.

When a sewer and water district must be formed to take care of a new development, the developer usually must, at his own expense, make the installation of the sewer and water facilities before the county road engineers can begin their work with county road engineers to determine their attitude about his future tie-in with road patterns.

"Regarding sewers for an area of new homes," Bruce said, "the developer must try to annex his land to an existing sewer and water district or form one which will incorporate the area. If he forms a new one, he must get information from the County Health Department, the State Pollution Control Commission and the State Health Department about the erection of a sewerage-treatment facility and also the installation of sewer lines."

Complete Study Needed

In order to obtain approval for rough-grade roads of the various governmental agencies, the developer must engage an engineering firm, have a complete study made of the area and get a formal proposal outlining the entire sewer district.

Regarding water problems, Conner added that a preliminary cost analysis is established for water, sewer, electric-tank and storm-sewer systems. His proposal must show the proper authorities how the developer intends to install these facilities, how they and gas mains. And now the

developer can put on a self-sufficient basis, but until then, with underwriting the operating costs of both sewer and water utilities.

Now, perhaps, the F. H. A. comes into the picture if the homes are to be federally financed. The developer must present to the F. H. A. an overall development program including all proposed improvements.

"Now finally," says Bruce, "the developer is ready to start clearing his land in preparation for rough-grade roads and utility installations. He must be sure that his road specifications meet county or city engineers' requirements. When the clearing is completed and the roads down to grade, the sewer-district engineer's concrete must be installed."

"Roads," adds Conner, "are always surveyed and staked from the center line of the streets. The corners of each lot are staked as well as the storm sewers, water lines and gas mains. And now the

small shopping center for the area is proposed.

ing pools, playground equipment and tennis courts are almost a "must" in today's large developments.

There still are, other details for the developer. For instance he must get a plat bonded to protect the county, it guarantees that all the facilities proposed will be completed whether the original developer completes the community or not. Other costs include a checking fee to the county engineer and filing fee to the county auditor.

Big and little developers have their headaches. Successful solution of the problems mentioned by Bruce and Conner is what makes Greater Seattle's new developments good places to live. Further afflicts many allied industries such as lumber, steel, aluminum, adding untold dollars to the community economy.

East Side P.-T. A. Backs Metro Plan

Mrs. John P. Lowman, Merceder Island, chairman of the East Side Area Council of Parents, has announced the council's support of the Metropolitan Plan.

Action was taken, Mrs. Lowman said, on recommendation of the council's legislative committee, headed by Mrs. Carl Erickson of Bellevue, because of the health and safety issues involved.

SEE Rologravra Page 46 than CALL CH. 2-0020 for a free home-heating survey and estimate on the new American-Standard gas hot water boiler

See Us For LOWEST PRICES

• EASY TERMS • 25-YEAR GUARANTEE on hot iron sections

See Us For LOWEST PRICES



UNDER CONSTRUCTION: This is the Evergreen Tennis and Country Club, now expanded at 12th Avenue South between South 168th and 170th Streets in the Highline District. Designed by the architectural firm of Rich Trimble & Associates, the completed project will include clubhouse, tennis courts, swimming pool, playgrounds, parking lot, and sewage-disposal plant. The grounds will be landscaped. Jack Gehring, president of Evergreen Enterprises, said \$150 million worth of the applicant purchases \$300 or more in 5-per-cent-interest building bonds. The program will cost \$185,000.

Office Building On Queen Anne Brings \$100,000

A one- and two-story office building at 220-22 Queen Anne Ave. has been sold for \$100,000. Mrs. Henry J. Noonan, of W. P. Fuller & Co., and the North West District office of I. C. Denton of White & Boland, Todd-Hadley Co., a division of Erik Froberg, president of White & Boland, the purchaser was the sole bidder.

ALL I WANT IS THE WORD

A VIRGINIA LEE HOME

2404-127th S. E.

is exciting—charming—relaxing—and a showplace. Like a work of art, it can assume a personality, reflecting mood, dreams and deep moments of thought. To create such a home requires experience, skill, imagination and a warm intimate knowledge of human nature.

CHECK THESE QUALITY ITEMS and Compare

- ✓ ALL brick and structural lumber freshly spaced, milled, kiln-dried, and NO WARPING . . . NO TWISTING . . . NO WAKING
- ✓ Architectural Design Always . . . Materials Livability and Durability . . . Finishing Touch, Value and Interest Year After Year
- ✓ Third attention to detail . . . Assures Owner Satisfaction.

No. 32 on the Map

1,316 sq. ft. and level 2 Levels
Separate living room 2 1/2 baths—bunkbed & play room 10 x 12 ft. in large living room

We will reproduce this home on year at \$22,950

IRA EDWARDS Construction Co.
Hwy. at Drive-In Theater, see map for location, to Entrance SORWOOD VILLAGE, and follow the sign.

JUHL Realty

2060 Bellevue, Redmond Road GL 4-9541

Equipped with L & H Counter top range and built in oven Waste King dishwasher & disposal

MacPherson's Parade

"Look in the South"!

MINIMUM FHA TERMS! NOTHING DOWN G. I.!

TRADES ACCEPTED TOO!

MacPherson's Have A Home For You!

Furnished—6 on 1—\$11,000

Brand New 6 on 1—\$13,850

This is a completely modern home, built with 7 bedrooms, 3 baths, fireplace, kitchen, living room, dining room, breakfast room, terrace, and more. The applicable basement is finished with carpeting, tile, and more. The home is in the best location in the area, and is a must-see for anyone looking for a home.

Official Entry No. 46

DIRECTIONS: Drive South on Pacific Highway South to 252nd Ave. S., turn right (West) into "Salt Air Hills" and modern living.

Westinghouse appliances, such as the range and oven or the beautiful refrigerator, are available in all the "Salt Air Hills" modern homes.

MacPherson's Parade

"Look in the North"!

MINIMUM FHA TERMS! NOTHING DOWN G. I.!

TRADES ACCEPTED TOO!

MacPherson's Have A Home For You!

Furnished—6 on 1—\$11,000

Brand New 6 on 1—\$13,850

This is a completely modern home, built with 7 bedrooms, 3 baths, fireplace, kitchen, living room, dining room, breakfast room, terrace, and more. The applicable basement is finished with carpeting, tile, and more. The home is in the best location in the area, and is a must-see for anyone looking for a home.

Official Entry No. 5

DIRECTIONS: Drive North on Aurora to the stop light at 196th in Lynnwood, turn left and follow the MacPherson Open House signs.

Drive north to 205th turn left (west) and follow the MacPherson Open House sign to "Fir Meadows".

Westinghouse deluxe built-in range, ovens, dishwashers featured in "Fir Meadows" & "Sunset Park"

MacPherson's Parade

"The Finest Name In Real Estate"

MINIMUM FHA TERMS! NOTHING DOWN G. I.!

TRADES ACCEPTED TOO!

MacPherson's Have A Home For You!

Furnished—6 on 1—\$11,000

Brand New 6 on 1—\$13,850

This is a completely modern home, built with 7 bedrooms, 3 baths, fireplace, kitchen, living room, dining room, breakfast room, terrace, and more. The applicable basement is finished with carpeting, tile, and more. The home is in the best location in the area, and is a must-see for anyone looking for a home.

Official Entry No. 46

DIRECTIONS: Drive South on Pacific Highway South to 252nd Ave. S., turn right (West) into "Salt Air Hills" and modern living.

Westinghouse appliances, such as the range and oven or the beautiful refrigerator, are available in all the "Salt Air Hills" modern homes.

MACPHERSON

"The Finest Name In Real Estate"

Hospital Has Important Place in Community Life

The parade of homes, home-seeking customers ask pointing the trends of our about hospital facilities, because of Seattle families to cause they are not concerned about hospital care until they need it, home buyers nevertheless should consider availability of hospitals as they do "WHOM?"

The "Seattle Community Hospital" is a reminder that, in one year later the Dempsey's son, now 9, was stricken with polio. "He was hospitalized much more than new homes are needed. Schools are first in most persons' minds Mrs. Dempsey says, "and had New libraries, churches, shopping centers and government mental services all are needed by the new home owners."

Not least in importance are to the boy and a constant worry hospital, as real-estate men, builders and developers all know. Two realtors, Lennox Scott and Mrs. George Lister, are board members of the Overlake Hospital and have hoped that the hospital would come to Bellevue, so Mr and Mrs Robert Jenny about the hospital's importance to their community.

Other civic-minded persons serve voluntarily on this board of the Northwest Memorial Hospital which will fill a great need for Seattle's North End.

Many to be served Overlake Hospital, which will be built soon, will serve who live in the area that includes Mercer Island, Issaquah, North Bend, Carnation, Duwamish, Redmond, Kirkland and Bellevue.

"The prospective hospital already is a great asset to the area," said Mrs. Lister last week. "Although few of our homes are one reason this is known as the cleanest in the world. Today's bath-



MRS. H. E. WYLLIE
ONEAL

even the sports-loving teenage boy spends more time getting clean than he formerly did.

Automatic water heaters of sufficient capacity go hand in hand with today's bathrooms to provide adequate hot water for the entire family's daily bathing, as well as hot water for dishes in the automatic dishwasher.

"The day of the one-bathroom home," says E. L. Flowers, president of the Home Builders' Association of Greater Seattle, "is gone, except in the lowest-cost homes. Home buyers want and demand extra bathrooms and especially where there are two or more children."

Outstanding new developments in bathroom design, bathroom fixtures and placement in the home will draw attention of visitors to the Parade of Homes.

president of the Maywood and that it will help protect the young and old in the burgoning community.

Northwest Memorial Hospital will be built in the heart of a rapid growth area at North 120th Street near Meridian Avenue. In 1950, 224,000 persons lived in the area.

The Overlake Hospital is a 40,000 person moved into new homes. It is estimated that by 1970 there will be 300,000 persons needing a hospital if their community is to be complete.

An example of the spirit which has made the hospital a near-reality was announced last week by Harry Givan, president of the Northwest Memorial Association. He said that ten North End high school girls tapped their club treasury for \$16 to help pay for a hospital memorial in Linda Collins, a teen-ager who was killed last month in a traffic accident.

The new North End hospital will be a nonprofit non-sectarian general hospital. As against a national standard of four hospital beds for every 1,000 population, the North End now has only one bed for 1,000 persons.

Givan said the new hospital will be headed by Mrs. H. E. Oneal, Mrs. A. J. Wyllie is

SEE Rotogravure Page 46
CALL L.A. 4-1014
for a free home-heating survey and estimate on the new American-Standard gas hot water boiler.

Installed for as little as \$565

- in average 6 room home. Easy items.
- 25-YEAR GUARANTEE on cast-iron sections of the boiler.

Model Gas is safe—Shut—Economic!

DELL E. PETERSON
10328 Aurora L.A. 4-1014
OPEN SATURDAY MORNINGS

NEW THERMO-RITE
TEMPERED GLASS FIREPLACE SCREEN
IMPROVE LOWER FUEL BILLS
FIREPLACE PROVIDES SAFETY FOR HOME AND CHILDREN

- RADIATES ROOM HEAT LOW.
- SAVES FUEL.
- PROTECTS AGAINST KLYNO SPARKS, ASHES, DIRT AND DRAFTS.
- TIGHT DOORS OPEN WIDE FOR EASY LOADING OF FUEL.
- CONVENT DRAFT WITH TWO SIDING DOORS FOR FAST OR SLOW FUEL.
- SOLID BRASS CONSTRUCTION.
- BEAUTY UNHARMED BY THOUSANDS IN USE WINTER AND SUMMER.
- BURN WOOD, COAL OR GAS.

WRITE FOR FREE VALUABLE COLORFUL BROCHURE Mr. Request It.

SEATTLE FIREPLACE SHOP
EMERSON 2-6188
13728 Aurora Ave.

THE FIRESIDE SHOP
32-104 N. E., Bellevue GL-encourt 4-6181

MT. PARK ESTATES
SWEEPING VIEW of COUNTRYSIDE, LAKES, MOUNTAINS & RIVERS
No. 30 on the map

SEVERAL DISTINCTIVE FLOOR PLANS are available for your inspection.

The SOUDER HOME has, among many fine features, a sunken living room, copper-hooded barbecue and rotisserie, three full ceramic tile baths, three bedrooms, full sweeping view.

Jackie Souder's the northwest's well-known hand leader, says, "Come visit our home in MT. PARK ESTATES, during the annual PARADE OF HOMES."

Delving Directly
DRIVE OVER THE LAKE WASHINGTON FLOATING BRIDGE TO ISSAQUAH TOWN AND FOLLOW OUR SIGNS TO MT. PARK ESTATES.

BY BANNER HOMES
ROWLEY AGENCY, INC.
Sunset Highway at ISSAQUAH Phone EXbrook 2-6407

NIELSEN BROS. CARPETS RUGS

WARNING!
Because plaster dust and paint are soil-ing our rug stock we suggest you COME IN AS YOU ARE AND BE PREPARED TO BUY AND SAVE!

FAT ROLLS

Regular	Sale
All Wool Nutria WILTON 12x45'2", sq. yd.	9 ⁹⁵ 14.95
All Wool WILTON 12x31'3"	8 ⁹⁵ 13.95
All Wool Textured WILTON 15x19"	8 ⁹⁵ 12.95
All Wool Textured TWEED 12x58"	10 ⁹⁵ 14.95
All Wool 4-PLY TWEED 12x58'1"	11 ⁹⁵ 16.95

SKINNY ROLLS

Some Soiled and Damaged In Moving

Regular	Sale
All Wool WILTON 12x16'9"	4 ⁹⁵ 9.95
All Wool BJAin TEXTURED 12x20'8"	5 ⁸² 10.95
Chromspun SPICE TWEED 12x8	4 ⁵² 8.95
4-Ply All Wool LOOP PILE 12x10'6"	7 ⁹⁵ 14.95
Acrylic BEIGE TWEED 12x20'5"	4 ⁹⁵ 10.95

SKINNY ROLLS

Regular	Sale
All Wool TWEED 12x10'2"	4 ⁵⁰ 8.95
100% NYLON-TWEED 12x31'8"	4 ⁹⁵ 8.95
All Wool SCROLL WILTON 15x30 12.95	6 ⁹⁵
NYLON 12x6'9"	8 ⁹⁵ 15.95
All Wool (Mothproof) TWEED 1 Full Roll	5 ⁹⁵ 8.95

Bank Terms - \$10 Down - 3 Years to Pay
3 Stores to serve you • Open Friday Eve. 'til 9
Convenient Free Parking

• BALLARD • BELLEVUE • BURIEN
and all North End
10640 N. E. 8th
SU. 3-8500
SU. 3-3040

• BALLARD • BELLEVUE • BURIEN
and all South Seattle
11002 1st South
CH. 2-8400

Samples Shown in Your Home
if you can't come in, telephoto or nearest store and samples will be brought to your home.

SEE Rotogravure Page 46
Call ALpine 5-1881
for a free home-heating survey and estimate on the new American-Standard gas hot water boiler.

Installed for as little as \$450

- in average 6-room home. Easy items.
- 25-YEAR GUARANTEE on cast-iron sections of the boiler.

Model Gas is safe—Shut—Economic!

CENTRAL PLUMBING AND HEATING CO.
10110 East Avenue South
Burien, Washington

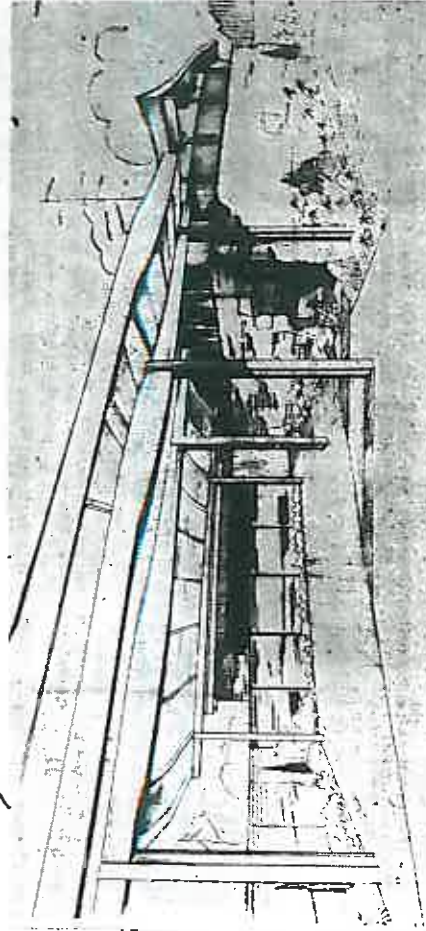
The Seattle Times 5
Sunday, September 7, 1958 R

Dean H. Estem, new president of the Seattle Chamber of Commerce, will outline plans for the coming year at the chamber's Members' Council luncheon Friday in the chamber building.

Zacharias also will introduce other new officers, Jean Papp will be toastmaster.

Contemporary Residence in The Uplands

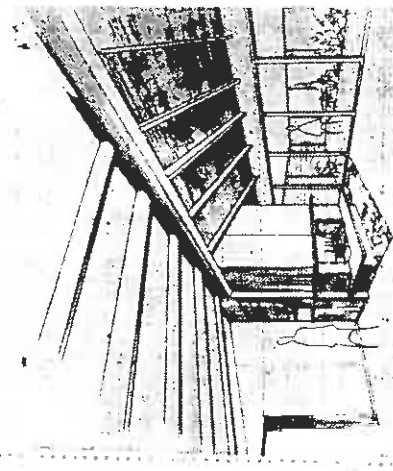
3,350 Sq. Ft.
In 2-Level
House



AN INTERESTING PROBLEM for the young family which prefers a contemporary house to a substantial neighborhood of late houses, a pretty view of lake and mountains and an expandable lower level will want to visit this open house in The Uplands, 6408 Hampton Road, south of New Ald Park.

Kenneth E. Koehler, architect, and John E. Conner, builder, collaborated in the design of the house to provide a young family with commodious living areas on the upper level and expandable space in a daylight lower

level. The house includes three bedrooms. There is expandable space on the lower level. This house of 1,675 square feet on a dark at 6,408 Hampton Road is featured in the 1938 Parade of Homes.



ATTRACTIVE: The fireplace is one of the interesting features in this open house in The Uplands.

DRIVING DIRECTIONS
To reach today's open house in The Uplands, drive south in Seward Park Avenue to Lake Shore Avenue. Turn left and continue south to Eddy Street. Turn right to Hampton Road and follow open-house signs.

The L-shaped plan has a wide carport on the street-side which serves not only as a car shelter and covered approach to the entrance but as a buffer for noise and privacy from the street.

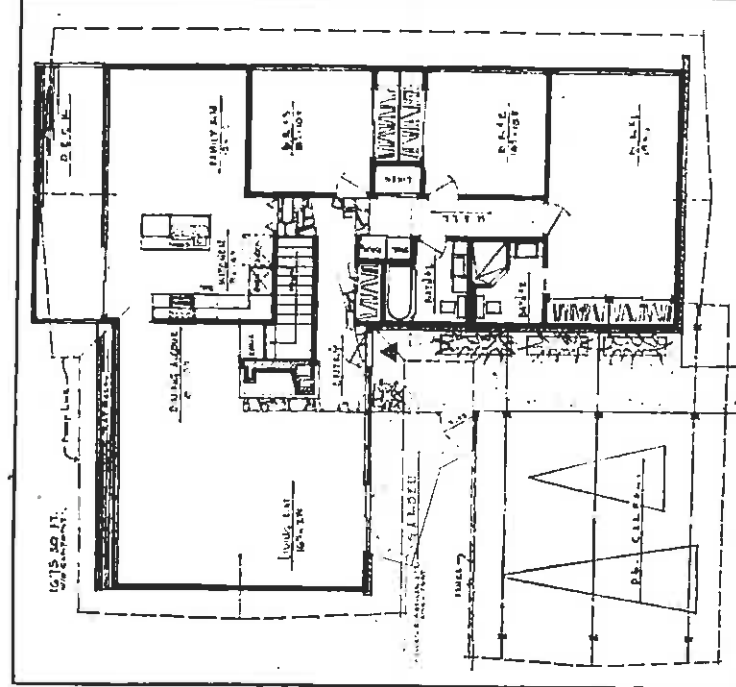
Exterior is colorful separating the food-preparation area from the family room. The soft, warm tones of gold, coral, and brown are finished in a natural brown. The trim is turquoise.

The same warm tones of red, brown and gold are arranged on the living room's upper level. Each of the two smaller bedrooms has a high ceiling and a wide window. The handsome fire-jin sandalwood, the other in place with its capiteled pink. Both share a skylighted bath is fashioned of the pink which takes its color from Kettle Falls Rubble. Oak scheme from the pink finishing is used above the tures and tile.

The master bedroom is a china cabinet in the dining placed at the end of the hall. A full window wall way. For complete privacy overlooks the lower garden two walls have high strip windows. The third wall is open to the kitchen and family devoted to wardrobe space, open over a view deck. Adjoining this large bedroom

Books Offer Vital Tips

On Purchase of Home
—Especially for Parade of Home—
Homes visitors the Seattle Plan and Build Your Own Public Library has prepared House, by Helen Koues, a list of available books which "Buying a House Worth the could assist buyers in their money," by Irazier Forman selection of a new home Peters. "The House for You Here are a few of the many in Build. Bus Rent," by B. House, by John. Back. Anyone with a library could Callender. "So You're Going may borrow these books to Buy a House," by N. Lee Persons who are patrons of the Seattle Public Library. "Building or Buying the King County Library may & House—a Guide to Wise request them on inter-library loan," by B. Kenneth Inan.



LIVING-LEVEL PLAN: The upper level of this two-level, contemporary house includes in the 1,675 square feet a flag-stone entry, living-dining area, kitchen, room, bath and laundry facilities.

is a shower bath fitted in tones which opens onto a level garden area. Laundry facilities include a study, a future bedroom area. The open stairway leads to a finished room, room and bath, and storage.

No. 10 On the Map
CUSTOM—ELDORADO LANE
West 125th and 3rd N.W.
VISTA GALLERY
A Magnificent Contemporary Home
Built by Arne Goedecke—Thomas Dunston, Architect

All Seattle's talking about the **VISTA GALLERY**. Features Esther Williams SWIMMING POOL. Situated on delightful private lane.

No. 36 On the Map
PRIDE of Exclusive Private MAPLE LANE
THE WATERFALL HOUSE
8447 S. E. 44th St. Mercer Island
For the discriminating person who wants custom design, unexcelled view, it's a must on your Parade.

ARNE GOEDECKE
Builder - Developer
L.A. 3-7708 E.M. 4-2972

MARINE HILLS Composite NORTHWEST LIVING

NO. 47 This distinctive home has a large living room, 3 fine bedrooms, generous family room... with colors co-ordinated to achieve a light and airy feeling. The two-car carport houses ample storage. The price is \$24,900. 29805

NO. 47 on MAP

One of the outstanding features of this home is the beautiful kitchen... walnut cabinets, bone white formica counters, pink-porcelain range, refrigerator, dishwasher... a pleasure for any homemaker.

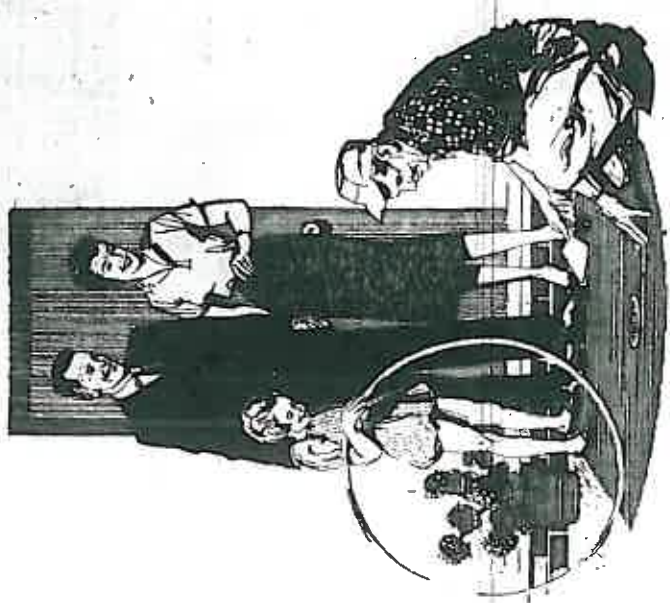
Built by DON POMEROY
Member HOME BUILDERS OF GREATER SEATTLE

5 CORNERS REALTY
6600 First Ave. South
CH. 3-6767

★ NATIVE TREES FOR BACKGROUND
★ LUXURIOUS SWIMMING POOL
★ Unique Slate Entry and Fireplace Hearth
★ Skylighted Family Bath plus extra plumbing

38 Homes To Be Built in Kenlake
Walter H. Erickson, builder of three bedrooms and two baths, will build 38 homes in the Kenlake District, overlooking in View Ridge, Hawthorne Kenmore and Lake Washington Hills and Olympic Manor.
Erickson has built homes in the Kenlake District, overlooking in View Ridge, Hawthorne Kenmore and Lake Washington Hills and Olympic Manor.
Women Learn Building
The homes will be built before information at the Women's Club. The homes will be built before information at the Women's Club. The homes will be built before information at the Women's Club.

New Guide for Home Buying...



Look for this Medallion outside...you'll find better living inside!

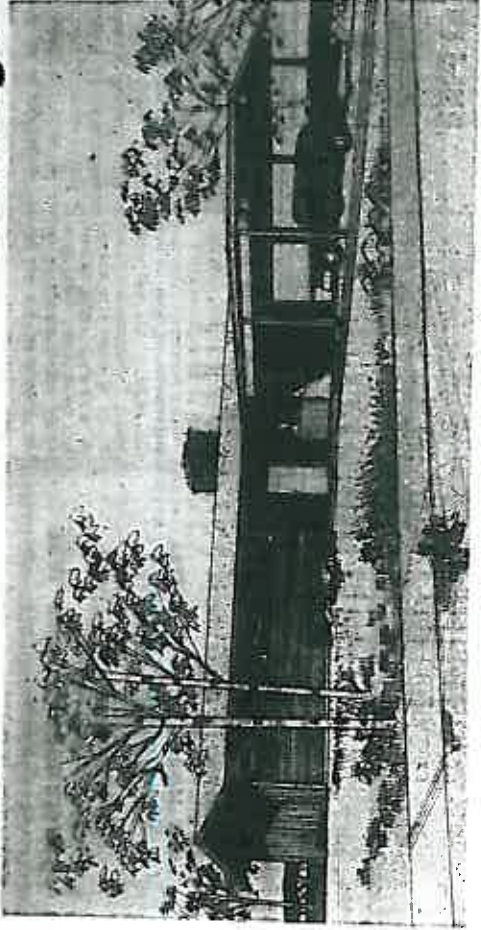
Wherever you see this Live Better Electrically Bronze Medallion built into a home, you know that better living has been built in, too. For every Medallion Home has been inspected by your Seattle City Light to meet the requirements of modern electrical living. The Medallion assures you:

- Your most-needed electric appliances, including range, water heater, dishwasher and at least one other major appliance are already installed.
- You will enjoy "light for living" — proper, modern lighting, meeting high standards, in all areas of the home to decorate as well as illuminate.
- You'll have full housepower — ample wiring, with enough circuits, switches and outlets for all your present appliances and those you plan to add later.
- Best of all, Medallion Homes qualify for City Light's record low all-electric rates.

SEATTLE CITY LIGHT

CITY SAVED
BUY SUPPORTING THE FUTURE
PAID - 4.8% - 10% - 15% - 20% - 25%

Hilltop Residence in Woodridge



OPEN HOUSE: This house, with an unexcelled view of water, mountains and green foothills, is on the crest of a hill southeast of Bellevue. Built by the firm of Robinson & Stewart, which has constructed many homes east of Lake Washington, it was designed by Donald Johnson. Both design and finish will excite many comments.

View, Access Feature House

Dark-brown beams and cedar siding, painted coral, together with Cascade brick facing make a pleasing exterior for a home just being finished in Woodridge near Bellevue. Visitors may drive through the airport from one street to the other; the home is bounded by three streets and is high enough so that nothing can obstruct the view from any part of it. Mount Rainier, Mercer Island and Lake Washington all may be seen.

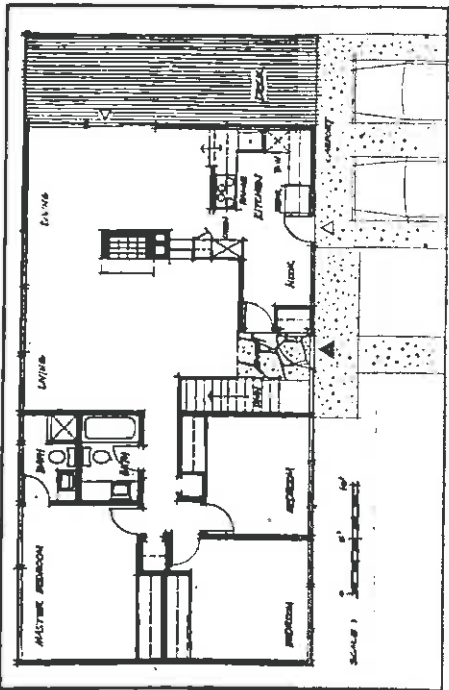
Across the street is the new Woodridge Elementary School. The home's address will be 12519 S. E. 18th St.

Two entrances in front lead to kitchen and entry hall, respectively. Going in, visitors' home's openness, achieved partly by cabinets that divide room spaces.

Windows Are Large
The huge glass windows reach from the floor almost to the ceiling in the living room and look over a coral-painted deck which extends around two sides of the house. Here aluminum sliding doors give access

...A Cascade-brick chimney up the center of the home has a raised fireplace hearth. All the doors are mahogany as are the kitchen cupboards, and on the vanity.

In the kitchen a counter range, dishwasher and wall oven are stainless steel. The formica counters and center-walls has been done. Better a future recreation room is stairs are easy to apply.



FLOOR PLAN: A hilltop home with a deck and daylight basement has been well placed on the site but it could be loupe paint, as well as the

DRIVING DIRECTIONS
To reach the only Times open house on the east side of Lake Washington today, take the Sunset Highway across Mercer Island to the Renton cut-off. There turn right and go over the highway, proceeding approximately one-half mile to the entrance of Norwood Village. Going up the hill through this development, follow open-house signs to the corner of Southeast Place and 126th Avenue Southeast in Woodridge. A large water tower immediately west of the house, is a good landmark.

Cedar Fence Popular
Seattle and suburban home owners are learning that native cedar, stained to harmonize with their homes, adds not only privacy but new beauty and added value. Precut sizes, available locally, make it easy for the homeowner to install his own fence, and homogenized stains are easy to apply.

Valuable Prizes Await Lucky Parade Visitors
To become eligible for prizes in the parade, paradegoers must be present at the parade on September 7, 1963, at the only float in the parade of homes this week, visitors need do only one thing—register their names and addresses in a Parade House.

The first prize will be a General Electric refrigerator-freezer, a combination model with 10-foot refrigerator and 5-foot freezer. It is worth \$609.95.

Some fortunate person will win a Rheem Wedgeseed range worth \$269.95 as third prize. Fourth prize is a toilet-dishwasher valued at \$38.95 and the fifth prize is a Frigidaire built-in double oven which sells for \$33.95.

A Youngstown kitchen sink worth \$273.95 will be sixth prize. The Whirlpool washer worth \$239.95 is seventh prize and the final prize will be a Moss Problem.

Moss has become a major problem with both new and old lawns. Residents of this area have found several good products for the elimination of this lawn pest, which prevents healthy grass growth.

Concrete slabs, brick and concrete blocks are the most popular materials used in the Seattle area for patios.

CEDARBROOK PARK ADDITION

Built by
NELS NYBERG
Master Builder

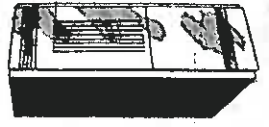


10609 10th PLACE N. E.

No. 15 on The Map
DISTINCTIVELY STYLED HOMES IN A PEACEFUL SETTING OF TOWERING TREES AND BABBLING BROOK

Fully EQUIPPED

- Including
 - Famous-Economical Low Pressure G.E. FURNACE
 - Built-in Automatic Range & Oven
 - Famous Labor-Saving G.E. Dishwasher
 - G.E. Kitchen Fan



PRICED \$28,000

DRIVING DIRECTIONS
Turn East on 10th St. to Roosevelt Way, then N. on 11th St. to Hillside Dr. ARROWS in today's Map N.E.

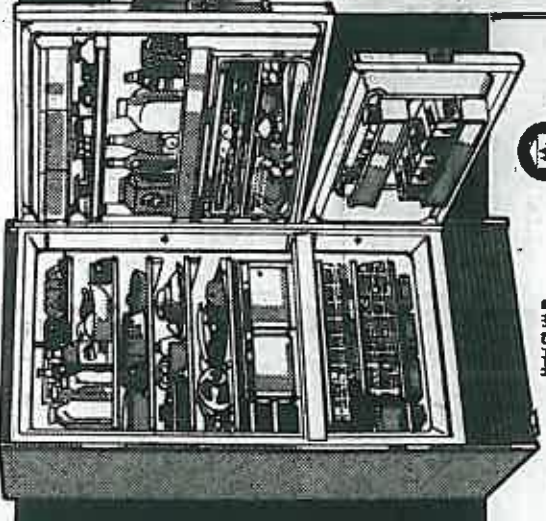
BILT-WELL CONSTRUCTION CO.
L.A. 4-3062
5731 40th N. E.

Sparkling with NEW COLOR!

Packed with NEW FEATURES!

Styled with NEW GLAMOUR!

Bruce Duncan SUGGESTS SOMETHING
Real, Expensive—Real Nice!!
BEST FOODKEEPER
IN THE WORLD
... Bar-None!



NO DOWN PAYMENT

499.95
and your up to 10-year-old refrigerator

Copied, limited—Never Equalled

NOW the New SHEER LOOK moves even further ahead of the style parade!

Already a full year ahead of the field, the New Sheer Look leads again in '58—combines clean, classic styling with complete utility—gives your kitchen a "custom-planned" look without the usual remodeling costs.

Choose from 4 Sheer Look Colors yours at the Price of White!

Exciting new Frosty Turquoise—new Sunny Yellow—Mayfair Pink—Dramatic Charcoal Gray. Take your pick—get color—pay only for white!

Come See why FRIGIDAIRE is America's most popular refrigerator—by far!

Bruce Duncan
Builder Specialist

616 S. W. 152nd
602 Auburn Ave.

Burien CH. 4-3722
Auburn TE. 3-5360

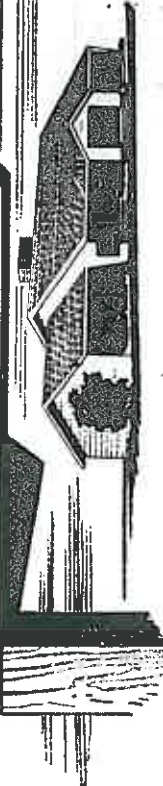


Designed Today for Better Living Tomorrow!

FRIGIDAIRE
Builder Specialist

"Title Service" "That Protects"

Complete Title Protection



THE MOST IMPORTANT SIGN IN YOUR PARADE OF HOMES

You can only enjoy the charm of a new home... the pride of ownership... the pleasure of comfortable relaxation in a new home... when you know your title rights are protected.

Follow the Parade of Homes, make your dream home come true. But—be sure you have complete title protection when you buy.

Washington Title Insurance Company has the experience... the reputation... and the financial responsibility to insure the title protection you need. You can depend upon Washington Title, with its complete, modern title facilities to meet your title as accurate as the records.

You can depend upon Washington Title to defend your rights against all claims, and to protect you from any loss through suit, to the full extent of your title insurance policy.

Enjoy the Parade of Homes—make the title to your new home our responsibility.

WASHINGTON TITLE INSURANCE COMPANY

719 Second Avenue • Seattle 4, Wash.
Mutual 6600

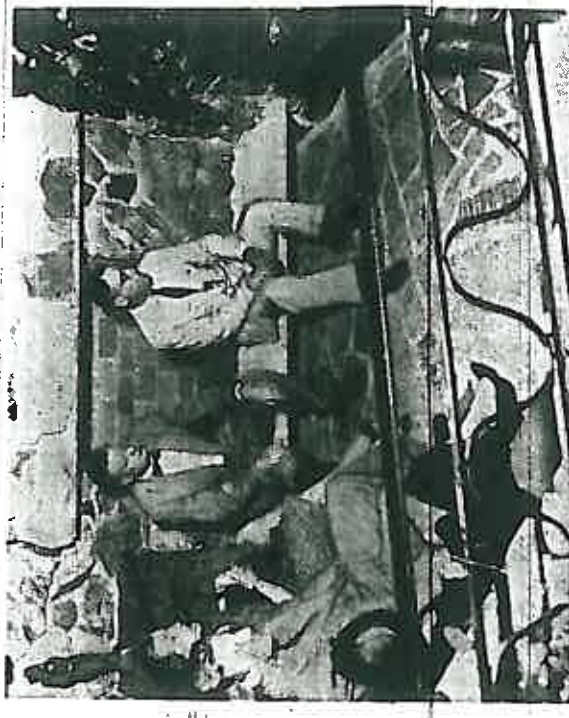




CITY LIGHT PREVIEW: When Seattle City Light look 40 women on a preview of five Parade of Homes houses Wednesday, the accent was on kitchens where electrical appliances play their greatest

City Light Has Preview of Parade Homes

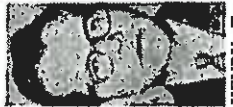
Seattle City Light began a members of the Warren Avenue, wiring and electrical applications last week when its cause Circle of the women's planners. Requirements, staff members, Mary Norris, division of Cerebral Palsy, established here by Seattle City and Robert Collins, look a. All proceeds from ticket sales light, if met by the builder, of Parade of Homes houses in a large bus, will go to their home of a cast-metal medal- sign, and more important to. The City Light, sponsored to the house or imbedded in gleam from the women's com- tour is a national idea, eman- its concrete. homes -- particularly new Home Light- ing Institute view included Mrs. C. W. Farwell, which also is behind the Me. Farwell, board member of Cerebral Palsy here. With this preview annually, is one which meets specific Mary Norris she and other. This year the women were requirements for good light- guests saw five new homes, for sale here.



LISTENING POST: Five Preview Parade tourists, from left, Mrs. Henry B. Owen, Lyle Goss, Mrs. Raymond B. Allen, Dr. Edward Palmerson and Bernard Reiter, enjoyed this "hi-fi" room. Stone-floored and stone-walled, it is part of a large living room in a new home. With sufficient seating for a conversational group.

Realty Firm Reorganized; Henry Wood New Partner

Ernest J. Riley, a partner of the locally famous firm of Yates, Riley & MacDonald, has sold his interest to his partners and the firm has been reorganized. Henry Wood, who has been with the firm since its inception, has been named the new partner. Henry T. Wood is a graduate of the University of Washington, where he majored in business administration and real estate. Riley said yesterday he will assist to the firm. His future plans are not definite. Yates, Riley & MacDonald was organized in 1942 with



ERNEST J. RILEY

SEE
Rotogravure Page 45
then
CALL ME. 2-0290
for a

free home-heating survey and estimate on the new American-Standard gas hot water boiler.

See Us For LOWEST PRICES

• **EASY TERMS**
• **25-YEAR GUARANTEE**
on cast iron sections — working care of the boiler.

• **Free Estimates**
• **Material Gas Is Efficient — Economical**
C. F. MASSART, INC.
4041 Westgate

Conscience Catches Up

WATERTOWN, Conn., Sept. 6. — (U.P.I.) — A short time after a water-main break here high and dry, a home-division of the D. K. MacDonald Co., Donald H. Yates, president, were the principals. Wood began his association with Yates and Riley 21 years ago in the Norris, Beggs firm. When the subsidiary office was purchased from the mother company in Portland, Ore., and the merger took place, Wood remained with the new company. Wood is a graduate of the University of Washington, where he majored in business administration and real estate.

COLOR-COLOR-COLOR!

How would you like to have colorful drapery that never fade... never wear out... never need cleaning. You can, by choosing Flo-Folds—the vertical blinds that draw. Their beauty and luxury and lovely colors are absolutely permanent. Made of slim, graceful aluminum panels, Flo-Folds come in a wide selection of gorgeous colors and textures.



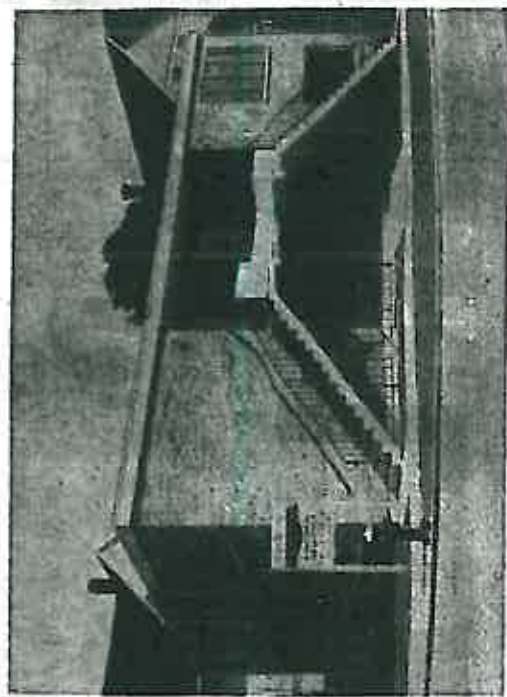
Now available with new plastic parts for quieter operation
Call for free estimate. (Budget terms)

SEE
Rotogravure Page 45
then
CALL ME. 2-2222
for a

free home-heating survey and estimate on the new American-Standard gas hot water boiler.

• **EASY TERMS**
• **25-YEAR GUARANTEE**
on cast iron sections — working care of the boiler.

• **Free Estimates**
• **Material Gas Is Efficient — Economical**
C. F. MASSART, INC.
4041 Westgate



OPEN HOUSE: Visitors will be welcomed today to inspect the York Apartments, 11th Avenue North and East Thomas Street. The new building was sold for the owners, E. T. Hinrichs and Roy Johnson, builders, to the Key Street Investors.

Home Tracts On Hawaii For Sale Here

More than \$500,000 in home sales in June and July were reported yesterday by Kathleen Owens, Realtor. A total of \$591,000 in sales resulted from exclusive listings at the Owens office, of which \$54,750 were cooperative sales with other brokers.

Twenty-two homes were sold, ranging in price from \$16,000 to \$42,000 each. They were in the Magnolia and Queen Anne Districts. The large amount of sales developed during months which usually are the "lull" months of the year, Mrs. Owens said.

Mrs. Owens, who employs \$14 to \$35 an acre. Seventy-Macropia offices remodeled five miles of cinder-top road inside and a new store front limit outside.

A number of Seattle investors already has purchased tracts. Adams said there has been little property for sale in the islands because 50 per cent of the land is owned by government bodies and 40 per cent is controlled by 20 plantation owners.

SEE
Rotogravure Page 45
then
CALL EM. 2-2222
for a

free home-heating survey and estimate on the new American-Standard gas hot water boiler.

We Specialize in New Home Installations and Commercial Heating Systems

• **EASY TERMS**
• **25-YEAR GUARANTEE**
on cast iron sections — working care of the boiler.

Material Gas Is Efficient — Economical
GAMMAN HEATING CO.
EM. 2-2222 1519 E. 17TH

Most Mortgages Paid Off Early

A survey by the New York Life Insurance Co. shows the company's average home mortgage loan is paid off in about eight years. Changing jobs, moving to other cities, changing family situations, including the birth of additional children, were given as reasons why loans were paid off before maturity. Relatively few loans pay out over the full term, the company said.

Dealerships Available... Openings For Salesmen

for the amazing gear-road **TYPHOON HEAT PUMP**
(See Ad. below)

A. WILCOX CO. & SERVICE

704 North 34th St. ME. 2-0314



the amazing year-round Typhoon Heat Pump
ONE SIMPLE UNIT THAT HEATS & COOLS YOUR HOUSE!

A. WILCOX COMPANY SALES AND SERVICE
704 North 34th St. ME. 2-0314

Hardwood Doors \$4.00

From SAND POINT BUILDERS SUPPLY
214 Eastman St. Seattle, Wash.
194 S. E. 1st St. Portland, Ore.
194 S. E. 1st St. Astoria, Ore.

Dealerships Available... Openings For Salesmen

for the amazing gear-road **TYPHOON HEAT PUMP**
(See Ad. below)

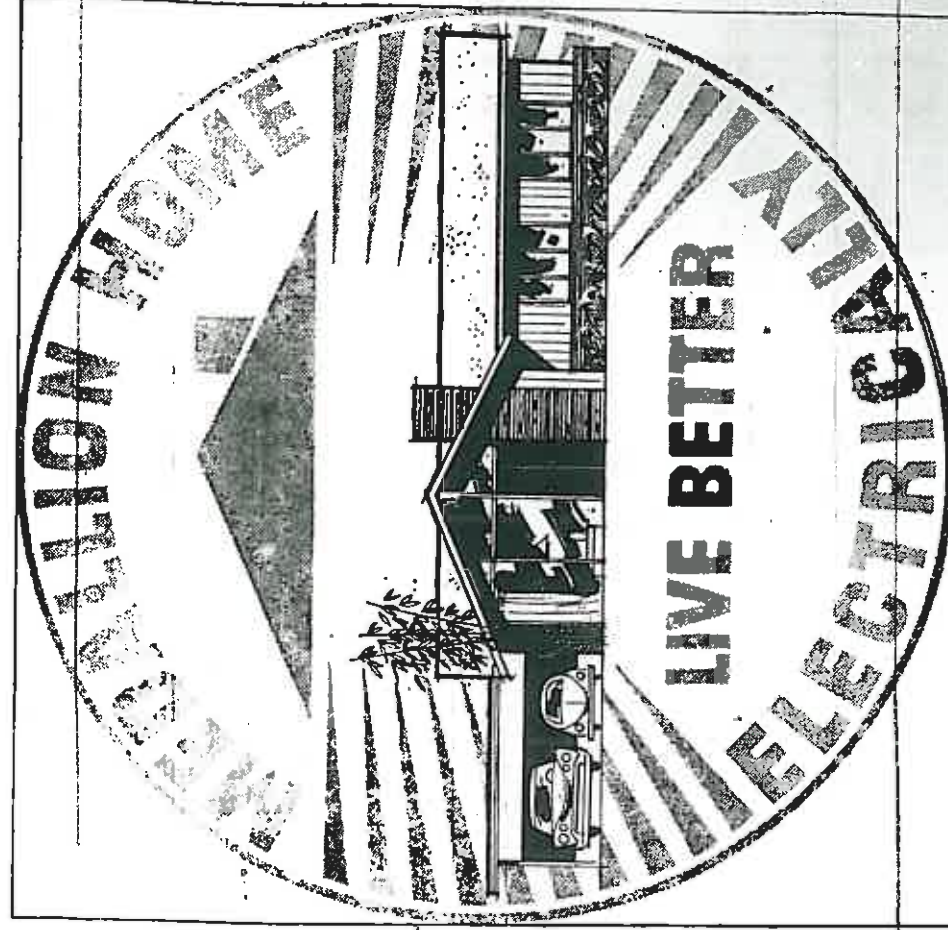
A. WILCOX CO. & SERVICE

704 North 34th St. ME. 2-0314



the amazing year-round Typhoon Heat Pump
ONE SIMPLE UNIT THAT HEATS & COOLS YOUR HOUSE!

A. WILCOX COMPANY SALES AND SERVICE
704 North 34th St. ME. 2-0314



Symbol of the best... a Medallion Home

When you see this "live better electrically" Medallion on a new home you know that it incorporates the finest features of modern electric living. The Medallion guarantees complete, modern wiring... engineering... "conditioning" in every area... and basic, installed automatic electric appliances. Inspect Medallion Homes in this area now. You'll discover new proof that for all modern living needs "electricity is best... and costs you less."

SEE
Rotogravure Page 45
then
CALL ME. 2-2222
for a

free home-heating survey and estimate on the new American-Standard gas hot water boiler.

We Specialize in New Home Installations and Commercial Heating Systems

• **EASY TERMS**
• **25-YEAR GUARANTEE**
on cast iron sections — working care of the boiler.

Material Gas Is Efficient — Economical
GAMMAN HEATING CO.
EM. 2-2222 1519 E. 17TH

5-Bedroom Home in Alicia Park

House Boasts Many Novel Features

The only five-bedroom home in today's Parade open house group is constructed of horizontal cedar siding, stained charcoal. Its masonry work on the front matches the center chimney inside.

At the entry are four obscure glass panels that allow plenty of light in the entry. In the living room the fire place has a raised hearth. The chimney has a second opening for wood storage.

The .28-foot-long living room is L-shaped and includes a dining area. In the summer the deck, reached by sliding glass doors and with a view of nearby woods, will be a pleasant dining area.

All the windows in this home in Alicia Park, built by Omar Brown, have a new feature in windows and obviously a practical one. There are hardwood floors throughout.

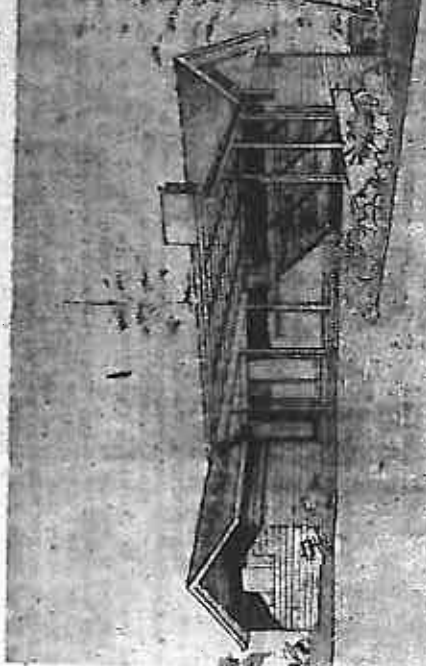
Access to Back Yard
From the deck is seen the large back yard, where an owner could have a swimming pool. The lot is 65 by 135 feet. Another important feature is the access road skirting the home's east side. It will provide for driving to one's own back yard.

The kitchen has a barbecue built into the chimney that separates kitchen from living room. Here copper-tone appliances, dishwasher, counter, disposal and wall oven contrast with the pink Formica counters.

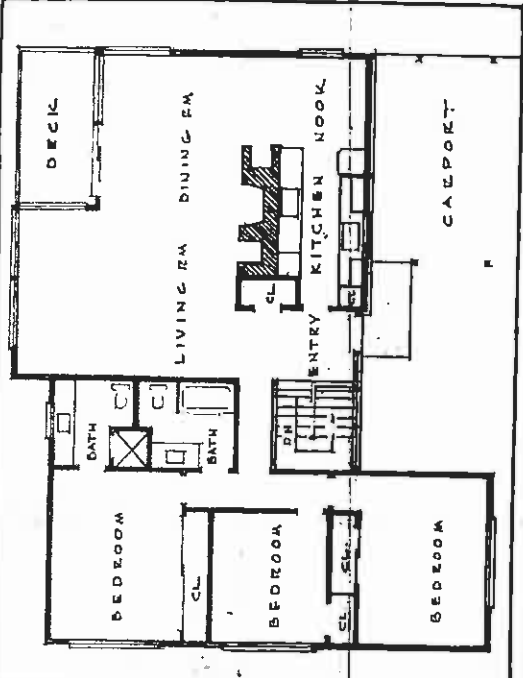
The sills are found in the kitchen and throughout the house. Kitchen walls are beige and there is copper-tone tile behind the counter range. The kitchen linoleum is a pleasing embossed pattern.

The home has gas heat. Birch predominant on the first floor are three good-sized bedrooms. They feature folding birch doors for their double wardrobes.

DRIVING DIRECTIONS
Go north in 35th Avenue Northeast to East 100th Street to reach parade open house in Alicia Park. Turn east in 100th and drive down the hill to 3908 E. 100th St.



OPEN HOUSE: This home has a full day-light basement but gives the impression, nevertheless of a long, low rambler from the front. The masonry is pale yellow "shell" stone, a kind of rock that has imprints of marine life.



FLOOR PLAN: Omar Brown, who has built many homes in Alicia Park, is the architect. The builder of this five-bedroom home. In fact, most of the home's half bath downstairs as well. This home, designed by interior wood is birch. The family bath has sun. Here sliding glass doors tural firm, will be open to vanity which extends the patio; under the Parade visitors from noon to 8:00 p.m. The 8-foot length of the front also has a big storage will be interested in this drawers aplenty underneath. Down the iron-grill in-closed stairway to the basement, we find five rooms, two completely finished bedrooms and a recreation room with the same good-looking well-stone chimney and fireplace of today's Parade of Homes home fireplace. Many are so in an indication, brick, stone, designed and placed that they have wardrobes. There is a materials, but designers have room.

Fireplace Has Many Functions

The fireplace has taken on added unusual designs to give a new and important decorative beauty as well as new functions. It is a passion-functional use for today's Parade of Homes home fireplace. Many are so in an indication, brick, stone, designed and placed that they have wardrobes. There is a materials, but designers have room.

Marketing Expert Praises Seattle Building Industry

It is apparent that moving plans in the construction industry and, builders are now, Edge, said of the homes built in Seattle and its suburbs than are their fellow counterparts in any city in the country. said Stanley Edge, on his first visit to Seattle last week.

Edge should know. As president of a marketing firm specializing in the home-building industry, he has inspected new homes in virtually every other big city in the country. "I've said some very unkind things about other cities," Edge said, "but I'm sincere when I say that the Seattle home-building industry is more logically advanced than the East Coast. And in design, the arrangement of a home's components, Seattle is way ahead."

Balcony Praised
Edge remembered how the famed architect, Frank Lloyd Wright, once said, "Too many houses look like a brick wall with bunches of holes punched in it for windows." Seattle's new houses have windows that make a well balanced arrangement, Edge pointed out. So many good houses did the visiting expert see in the Greater Seattle area that he took photographs, intending to place them in a national home magazine.

The best indoor-outdoor living. **Air-Conditioners Win New Stature**
All types of air-conditioning, from blower systems on heating plants to full-fledged air-conditioning systems and room air-conditioners, will be of special interest to visitors of homes featured in this year's Parade of Homes. The long, hot, dry summer has focused attention on this important adjunct to comfortable living, say builders who will exhibit homes. Insulation, too, will come in for special attention, not only to help keep the house cool in summer, but to keep heat in during the winter.

THE LEADER OF THE PARADE \$41,750.00



For the active family of the man who has arrived! We proudly present the most strategically located property in Seattle. The 180 DEGREE VIEW IS UNSURPASSED ANYWHERE! No detail has been omitted to make this home of over 2100 sq. ft. the utmost in luxurious, unobscured living. VIEW of mountains, and Lake Washington. You're literally sitting on top of the world. Come prepared to spend an hour examining the home, absorbing its charm, enjoying the view.

Construction by Rosella
Open Daily 1-5
Crayford & Conover, INC.
8040 326th Avenue N. E.
L.A. 3-3085

You Are an INFLUENTIAL When You Live in an ALBERT BALCH COMMUNITY

- View Ridge
- Wedgwood
- Panorama View
- President Park
- Cedar Grove

New Homes and Lot Available at Appraised Prices. OPEN DAILY 1 TO 8 P.M.



OUR PRIDE IS BUSTING OUT ALL OVER. Because the Saturday Evening Post has pinned the Blue Ribbon on Albert Balch Homes. In the same class as Holiday Magazine's award to the finest restaurant, the Saturday Evening Post "Influential" Builder's Award for distinct quality is coveted recognition. The Post "Influential" homes abound in hidden values built into the bones by the use of our Nation's foremost building material manufacturers. The Balch-Saturday Evening Post homes feature Nationally Advertised Brand Products.

PANORAMA VIEW 6038 South 120th Street
Go north on Renton Ave. to 66th Ave. S. and then west on 120th St. Wide expansive view from large 3 bedroom home, plus family room. High to the sky where it is built for our view lots.

CEDAR GROVE 22201 39th Avenue West
Go north on Highway 99 to 212th Ave. S. W. Turn east at traffic signal and follow signs to 44th Ave. W. Then south to 222nd Ave. S. W. View lots to 20th Ave. S. W. A new suburban community in the image of Wedgwood. Large lots, covered yards to be improved with city sewer, large cast iron water main, paved streets, large 3 bedroom houses.

WEDGWOOD 8600 25th Avenue N. E.
Visit McCall Magazine's Home. It is certified by Congress of Better Living, Washington, D. C. This is another of Albert Balch's originals. As far as we know this house type was originated by Albert Balch and its popularity has swept Seattle and now is sweeping the country. This house type has won plaudits of Saturday Evening Post's Best Homes program and American Builder Magazine.

PRESIDENT PARK 3518 16th Avenue North, Burien
From Renton go east on Sunset Blvd. to 12th St., east on 12th to "Y" St., south on "Y" St. \$27,000 total monthly payment \$12,000 mortgage. Zero down 100%. GI loans up to \$13,500 available. Can loan complete city improvements consisting of city sewer, city water main, concrete walks at this outstanding value rates and monthly payments.
At this time only 40 homes are left that can be sold at three years. Take advantage of the opportunity now. On one GI loan the builder must pay 2 1/2% discount for the buyer to obtain 4 1/2% simple interest on his loan. This may force builders to sell the GI program once more.
Learn to these advantages: larger homes by 120 to 160 square feet, better plumbing, better materials, better construction, lower neighborhood low city insurance rates, low city water rates, and low city taxes! city house now city school and new shopping centers. Close to all conveniences to everything.

WESTINGHOUSE



WESTINGHOUSE for years has supplied electrical ranges, refrigerators, lawnmowers and lawns by all thousands for Albert Balch homes.
Almost every home of our homes shows a refrigerator in it. In the packages mortgage at 4 1/2% interest. This is the cheapest way to buy and the most reasonable interest you will find.
Take advantage of having WESTINGHOUSE new free lunch, washing machine and a washing machine. Get a fully equipped WESTINGHOUSE kitchen. Get a GI mortgage with one. It will be made to suit you. Get a GI loan and in one year you will have more in interest than we.

Our Home Loans Change Hoping to Having!



If you are reading advertisements and looking at homes or building lots... perhaps a loan from WASHINGTON MUTUAL can help you get what you want... sooner!

Or, if you want to improve or remodel your present home... ask us about a loan to help you do that. We make all types of real estate loans. You will like arranging for a home loan at this bank. It will be worked out to meet your family's particular requirements. And, since we do not sell your mortgage, you will continue to deal with us until the loan is paid off. This can be a real advantage to you... now and in the future.

When you have chosen your home come to WASHINGTON MUTUAL for a loan to help you finance it. We make more home loans than any other Seattle institution... and we can make you a better loan, too. Your nearest WASHINGTON MUTUAL office will be glad to talk to you.

WASHINGTON MUTUAL SAVINGS BANK

Mos Grove
SECOND AL SPRING
BARABAR
BELLERIE
TIMES SQUARE
UNIVERSITY
WEST SEATTLE
WHITE CENTER

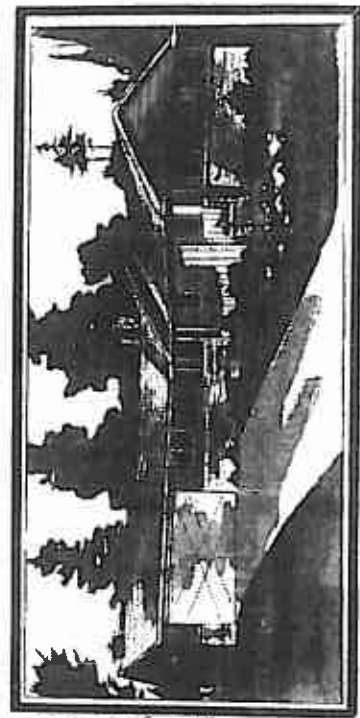
Member of the Federal Reserve System

ALBERT BALCH Community Builder

8040 326th Ave. N. E. Seattle, Wash. D.C. 98105

Picture Floor Plans JOINS PARADE OF OFFICIAL AWARDS

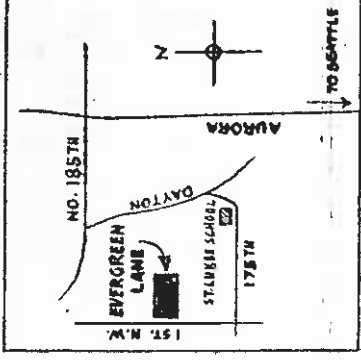
Construction Good in Richmond Highlands Home



Close In—Convenient—Ray Anderson's

EVERGREEN LANE NO. 3

"Individuality and Charm in Nature's Own Setting." One look and you'll easily see why this builder is acclaimed tops in his field, for here are homes with personality and warmth. Finished to perfection, with the finest materials available today. All plans feature 2 baths or more, 2-car garages, slate entries, patios, sundecks and built-in appliances. From \$18,950.



Heated with Natural Gas



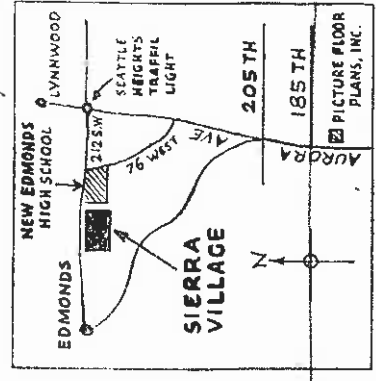
Driving Directions . . .

Turn West at North 185th and Aurora to Dayton School (North 175) and follow our Open House signs or see official Parade of Homes map for Open House No. 6.

Stewart & Poffler's

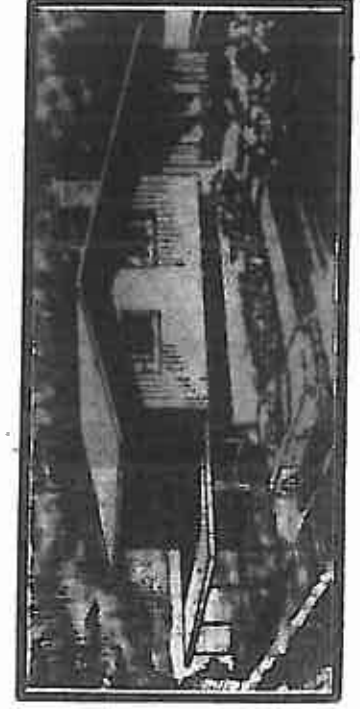
SIERRA VILLAGE

Nestled behind towering evergreens you'll find one of the most beautiful Suburban developments in the Northwest. Every home is planned perfectly to take advantage of the lovely setting. Seven different plans with 3 bedrooms. Recreation rooms, 2 baths and daylight basements. FHA built and inspected. From \$12,750.



Driving Directions . . .

North out Aurora (US 99) to the Seattle Heights traffic light (212 S.W.). Turn West, continue past the new Edmonds Highschool 1 block and follow our open house signs or see the Official Parade of Homes map for Open House No. 1.



ARMED & DANGEROUS
Warning: Home Value
Bids That Don't
Meet the Market
Are a Liability
For Builders
Answer: Double Pricing
Means 2-3 Year Construction Lagging
The National Home Builders
Association
and A. L. L. A.

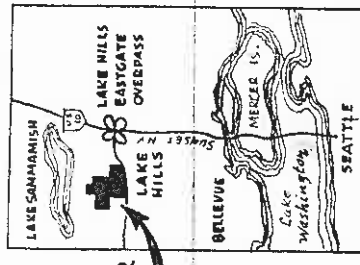
BELLEVUE Del Mar Homes, Inc. LAKE HILLS



For Suburban living with City convenience it's a Del Mar Home in the planned community of Lake Hills. See the eye opening San Juan split-level featuring the new contemporary "open" living and dining area designed for present day living. Other exciting Morrison built homes available from \$12,700 to \$19,500, including paved streets, curbs, sewers, and membership in the famous Olympic Club.

Driving Directions

To reach Lake Hills drive east on Sunset Highway to the Eastgate turn off. Take the Lake Hills overpass and continue north on 148 N.E. to the entrance to Lake Hills. Follow the open house signs on Lake Hills Boulevard past the Doctor's Clinic, the Olympic Club, and the new modern Shopping Center to the San Juan model at 16020 Lake Hills Boulevard or see the Official Parade of Homes Map for Open House No. 10.

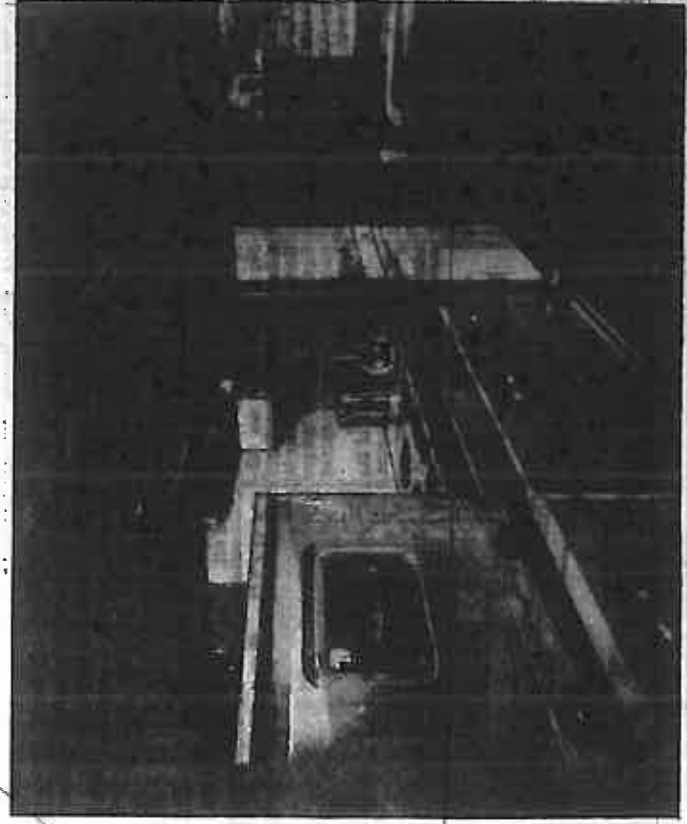


Heated with Natural Gas



All Homes Feature... Westinghouse
"Kitchens of Tomorrow"

You Kitch Yes, built freez ROB Mus eyeste Mich



You Can be SURE if it

Five Offices to serve you
Bellevue Office, 111-104th N.E. GL 4-3331
Greenlake Office, 7314 Aurora Ave. LA 4-1130
Richmond Highlands, 1

of HOMES with FIVE . . . WINNERS 1958



**Selected for their quality, craftsmanship
and unique styling and design, these
quality builders and luxurious homes
have been acclaimed leaders in the field.**

**Expandable Home in
Twin View Estates
Home is Ideal
For Growing
Family**



 Heated with Natural Gas

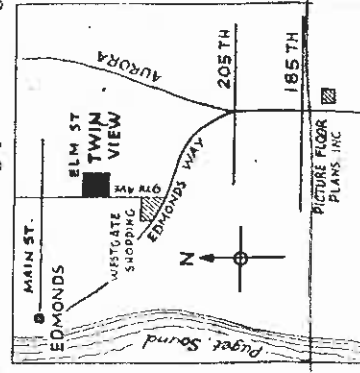
Sweeping Sound and Mountain View—Sig Kelstrup's

TWIN VIEW ESTATES

54 Sweeping Sound View homes with all the City's conveniences. Blacktop streets, curbs, sewers and street lights are in. Here you'll find national architectural award winning plans from big majestic colonials with 4 bedrooms, 2 baths, recreation rooms, 2 car garage to the very popular split and tri level full daylight basement plans. On easy F H A terms. From 18,950.

Driving Directions

North on Aurora to 205th, then west on Edmonds cutoff to Westgate Shopping Center, then North on 9th Ave., approximately 5 blocks and follow our Open House signs or see the official Parade of Homes map for Open House No. 3.



inghouse . . . Built-In F TOMORROW"

You'll thrill to the pure beauty of these luxurious Westinghouse Kitchens, featuring the very latest in design in built-in appliances. Yes, truly **WORK-FREE KITCHENS!** Features that include built-in counter-top range, oven and copper hood fan, refrigerator, freezer (built-in, of course!), dishwasher, disposal and the all new **ROBOT** appliance center!

Music — at your fingertips — piped to every room in the house . . . and with a flick of a switch it becomes a complete intercom system. Small wonder a home complete with Westinghouse luxury kitchen becomes a leader in its field!

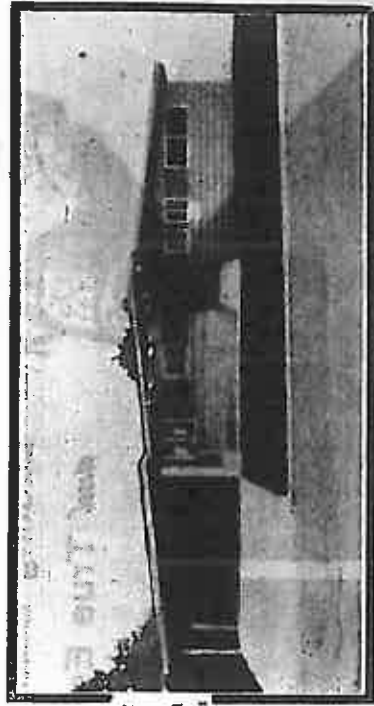
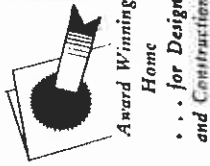
IF IT'S WESTINGHOUSE

es to serve you

OR PLANS, INC. Lynnwood Office, 200th S.W. & Hy 99 PR. 8-1186
lands, 18332 Aurora MU. 2-6860
Laurelhurst Office, 3216 East 45th LA. 4-0038

KENMORE

**Park-like Setting—Walt Erickson's
KENLAKE VIEWS**



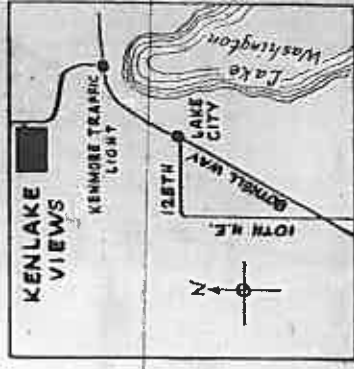
Entertain dozens in uncrowded comfort in these spacious 7-on-1 ramblers with full daylight basements—for here is Western living at its finest with the emphasis on the popular indoor-outdoor living. 2900 sq. ft. of living space with view from 23,950.00

Driving Directions

Drive North on Bobbell Way to Kenmore Lite; turn left and follow Open House signs or see official Parade of Homes map for house No. 17.



Heated with Natural Gas



View Residence in Salt Air Hills

3 Bedrooms in One-Level House

Salt Air Hills, where eventually there will be 120 homes, has a territorial view with Puget Sound in the background and, on clear days, a magnificent view of the Olympic Mountains.

Another advantage of this new development in Greater Seattle's far South End is the sewer system, already in

DRIVING DIRECTIONS

To reach today's South End open house, go to Tacoma Highway. About one mile south of Midway, large Salt Air Hills signs mark the entrance to this year-old development. Times open-house signs will lead visitors to the home at 2210 S. 250th St.

stalled. There are a number of open houses in Salt Air Hills this week, some two story models.

The Times chose a one-story house with basement; it is modestly priced in comparison with others.

Here are some of the home's best features: Hard wood floors throughout aluminum casements, colored bathroom fixtures, roughed in walls in the basement for future finishing, steel beams under the upper floor, masonry doors.

The home has cocoa-brown horizontal-cedar siding and a composition roof. Its living and dining areas are together, and in the kitchen, features are the easy-to-keep wool cup-

FLOOR PLAN
FLOOR PLAN: With a dining area in the living room, the kitchen nearby and three bedrooms close to the family bath, this is a natural finish mahogany doors. Each of the three bedrooms has one of the vinyl covered counters to their double wardrobes. In the master bedroom, a happy choice with the soft pink walls and the painted aqua, pale yellow and brown of the cupboards. In the master bedroom are two wardrobes with sliding doors.

The kitchen's covered counters to their double wardrobes. In the master bedroom, a happy choice with the soft pink walls and the painted aqua, pale yellow and brown of the cupboards. In the master bedroom are two wardrobes with sliding doors.

The kitchen's covered counters to their double wardrobes. In the master bedroom, a happy choice with the soft pink walls and the painted aqua, pale yellow and brown of the cupboards. In the master bedroom are two wardrobes with sliding doors.



Model Winners Get Special Treat

Two young winners of a briefing on construction model-home-building contest later they were his luncheon held here as a prelude to the guests in a private club.

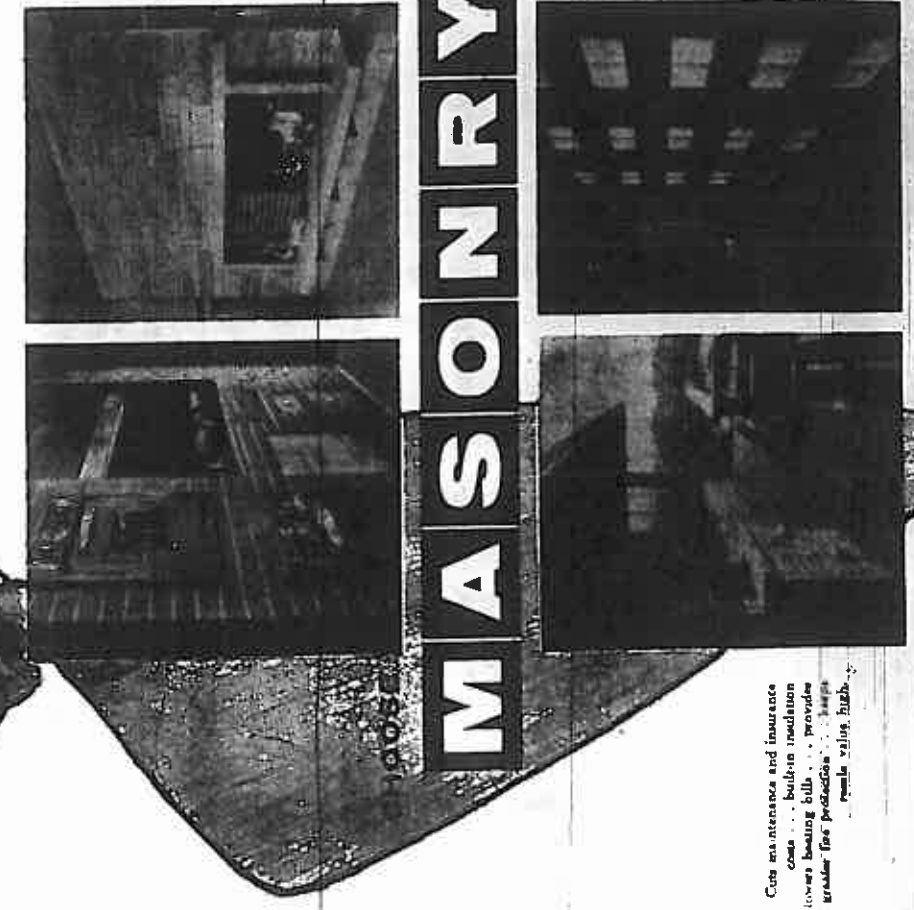
Parade of Homes, received a bonus thrill in addition to their savings-bond prizes.

Archie Iverson, public-relations chairman of the Home Builders' Association, gave the pair a treat they won't soon forget.

Iverson, builder of the new Continental Plaza Motor Hotel on Aurora Avenue, was so impressed with the young stars' work on their models when he was judging the contest, that he invited them to chase, and thus add to "that see his, new building from all-important educational in-top to bottom and to get a vestment in your children!

HUNTING-LODGE FIREPLACE: Mrs. Raymond B. Allen, wife of the chancellor of the University of California in Los Angeles, paused with Dr. Edward Palmason, newest member of the Seattle School Board, to discuss this unusual fireplace in a Parade of Homes house. It opens on four sides, and it is an unusual architectural feature in the living room.

For Lasting Beauty and True Economy



MASONRY

Can maintenance and insurance costs... Built-in insulation lowers heating bills... provide greater fire protection... keeps resale value high.

Unit Masonry Association of Seattle

D. C. Trip Is Prize In Home Essay Contest

If you know what you want, delegates, many of them who have been presented by contemporary plans easy to find out in a new home, can describe them through contests similar to the one announced today.

and if you are a woman 18 years old or over, you may win a fabulous trip to Washington, D. C.

The entry blank will be found on page 17 for a contest sponsored by the Parade of Homes committee. All the essay, 250 words or less, must be submitted by 5 p.m. on September 15 and marked by September 15 and sent to the Home Builders' Association of Greater Seattle, 170 Mercer St.

All entries must be accompanied by a filled-in copy of the housing survey questionnaire, also published in The Seattle Times today. This will be used for statistical purposes and does not need even to be signed.

Judges Named
 Judges for the contest will be Mrs. Harlan Edwards, city councilwoman; F. R. McAbne, member of the Home Builders' Association; Barnard Christie, vice superintendent of the Seattle Public Schools, and Elizabeth Wright Evans, Times Parade coordinator. Their decision, which will be final, will be announced in The Sunday Times, September 29.

The winner will go to the national capital for a three-day conference on housing, October 14 to 16. There she will meet with 100 other women from all parts of the country to tell members of the building industry what they want when they buy a home.

The Seattle delegate to the national representative will be a representative of the Builders' Association and the Times. She will be entertained along with other delegates.

Drainage Problem
 A leaky basement or foundation may not be the fault of the builder. Changing drainage patterns can put pressure flow of water against the concrete. New waterproofing materials and paints are available for both above- and below-grade concrete.

ESTIMATES

Perhaps you may be the fortunate winner. Fill out the entry blank now, think carefully about what you want in a new home and write it. This week in 250 words. If you need help in making your selections, your library can and will help.

Many of the developments (The questionnaire and ideas, greater strikes will be made.

THE "SUPERBA"



Our Semi-Contemporary—Model Home 1142 PINE ST. — EDMONDS, Wn.

No. 2 on the Map
 Tiled Entry, Picture Windows, and Brick to ceiling Fireplace enhance the cheeriness of this beautiful living room. Pum-stone floor to ceiling Fire-place in lovely Family Room. Beam ceilings throughout. Soft, flattering indirect lighting in "WOMAN'S-delight" KITCHEN. So Beautiful, Compact and Labor Saving. CEDAR-WOOD sliding doors cover Birch cupboard area. 3 exceptionally nice bedrooms, wardrobe closets and 2 complete baths. Most Neat \$17,950.00

GENERAL ELECTRIC

- Built-in Easy to Operate Counter Top Range
- Set in Kitchen for extra Counter Top
- Multiple Refrigerator & Freezer
- A Complete G. E. Kitchen

DRIVING DIRECTIONS: Turn west from AURORA on EDMONDS cut off and drive 9th Ave., then turn right to ELM ST., then right, again to 11th, then turn left to PINE ST. and follow the ARROWS.

-K & B Const. Co.
 PR 8-3339 EDMONDS, Wn. PR 8-9384

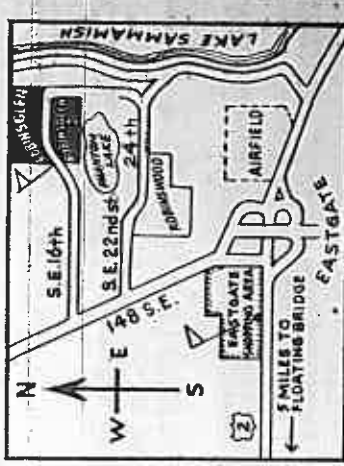
ROBINSGLLEN

HOMES BY GREGG WILSON



MODEL HOME NOW OPEN
 1245-165th S. E.
 No. 29 on the map

Featuring
SPACE GOOD LOOKS QUALITY
3 and 4 BEDROOMS
 Single and 2-Level Homes



YOU CAN BE SURE... OF THE Westinghouse

- Equipped with Built-in Oven and Counter-Top Range
- Dishwashers and Side by Side Washer and Dryer
- Now WESTINGHOUSE Refrigerator with COLD INJECTOR PLUS DISPOSAL

DRIVING DIRECTIONS:
 Cross the Floating Bridge, follow This Map from EASTGATE SHOPPING CENTER TO ROBINSGLLEN

LOW DOWN TERMS AVAILABLE
F. N. A.—G. I.
SH 6-1661
 If no answer Please Call
 NU. 6-1357 LA. 2-5523
 OL. 4-4129 SH. 6-1114

EXCLUSIVE With LAKE SAMMAMISH Realty
 In the Heart of EASTGATE SHOPPING CENTER

FINE RESORT: Two persons will stay in the Valley Ho Hotel in Arizona some time in the fall because the first prize in the Parade of Homes will be a trip for two.

Stay at Colorful Hotel Is Top Parade Prize

The winner of the Parade motif extends along all ex-Valley Ho after the Parade of Homes last year, a trip to the Valley Ho Hotel in Arizona. The first prize in the parade will be a trip for two to stay in the Valley Ho Hotel in Arizona some time in the fall because the first prize in the Parade of Homes will be a trip for two.

The remaining property has been leased to the Standard Oil Co. of California for development into a service station.

Howard A. Lang, third-generation president of the manufacturing firm, said his company will continue to occupy the plant until a new plant is completed at 274 1/2 13th Av. S. W. about the middle of November.

The Lang firm manufactures commercial electric cooking equipment. Negotiations in the sale and lease were handled by Fred W. Ecker, Jr.; James E. Groves, and E. T. Norman, all of West & Wheeler.

A Chicago paint-manufacturing company says it is ready to make a paint that will tint brown lawns green.

Russia took 69,866 square miles from Poland as a result of the Second World War.

— (U) STRATFORD, Conn. — A recent visitor to the San Francisco Bay has one ter here was a man named parking lot for boats as well as one for cars.

— (U) STRATFORD, Conn. — A recent visitor to the San Francisco Bay has one ter here was a man named parking lot for boats as well as one for cars.

Fall Landscaping Needs

New beauty for fall and spring

Scotts **SALE**

saves lawn \$ \$ \$

Right now, this fall—the best time to put new life, new beauty into your lawn

Scotts Pictorial Seed	SALE	SAVE!
Scotts LANDY Seed	\$7.50	\$1.00
Scotts PLUS Seed	4.15	1.00
Scotts 44-44-44 Seed	6.50	1.00

Copy 3, grub proofing base 34 3.10 .55
SCOTT'S SPREADERS 10.95 2.00
13.95 3.00
19.95 5.00

...first in lawns

Plant now for Spring flowers . . .

Direct from Japan Name Varieties

TULIP BULBS	DAFFODIL BULBS
Choice Varieties: Top-size Bulbs.	15-16 cm. Double-nose bulbs.
20 for 95¢ 12 for 75¢	

OPEN SUNDAYS

15844 1st Ave. So. **SCORNERS** NURSERIES AND GARDEN STORE
PHONE CH. 2-2931

ELKS TEMPLE: This sketch of the Lake City Elks Temple, 14540 Bothell Way, shows a \$50,000 addition to the existing building which will provide dining and kitchen space. Work has been started by the Raymond Construction Co. with completion slated for mid-October in time for the group's Fall Feast.

Parking for Boats: He's No Relation SAN RAFAEL, Calif. — (U) STRATFORD, Conn. — A recent visitor to the San Francisco Bay has one ter here was a man named parking lot for boats as well as one for cars.

Terrace Lane

• A WONDERFUL PLACE FOR A GROWING FAMILY

WEST 175th and 1st N. W.

If you need plenty of room and like luxury at a modest price, this is the home for you. From the slate entry hall you enter the full birch kitchen with large breakfast nook that mother will enjoy, or on to the living room with picture windows looking out over the tree-studded alley which can also be enjoyed from the family dining room. You have three large bedrooms on the main floor, plus a bathroom and a half so dad and the kids can get off in the morning on time. You enter the rec. room from the entry hall, down an open winding, paneled stairway. The large, glass sliding doors in rec. room open onto patio which make those family parties more enjoyable. In this full daylight basement with roughed in plumbing, you have room for two more large bedrooms and room for dad's workshop, too. Through generous use of ceramic tile, formica, mahogany paneling, birch and stone, Howard Mc Nicol offers you a real dream home at well under the usual market price

\$16,750 to \$18,450

Builder and Designer
Howard McNicol

DIRECTIONS
Drive out North on Dayton Ave. to St. Lukes Church and school, turn West to West 175th St. and let N. W. Follow the arrows.

exclusive by
C. B. ARGENT
your Haller Lake Realtor
433-46-1st Ave. N. E.

Lang Plant Land Changes Hands Twice

Two sales totaling \$105,000 involving the plant of the F. S. Lang Manufacturing Co., at 2734 1st Av. S., were reported yesterday by Richard W. Lenington, director of sales for West Wheeler Associates, Inc. The plant, home of the Lang company for 50 years, contained three lots. It was purchased by Rex Strickland of Westgate Properties, Inc., in turn, Strickland sold the south 60 feet, comprising one lot, to the Seattle-First National Bank.

Parking to Be Increased
The bank will use its property to extend parking facilities for its adjoining industrial branch.

The remaining property has been leased to the Standard Oil Co. of California for development into a service station.

Lang to Remain
Howard A. Lang, third-generation president of the manufacturing firm, said his company will continue to occupy the plant until a new plant is completed at 274 1/2 13th Av. S. W. about the middle of November.

CONSTRUCTION TO START: This is the first unit of the Lewis and Clark Shopping Center, east of Highway 99 at South 14th Street, which will get under way this week. The unit will house a large Market Basket store and a drugstore. It will cost some \$240,000. Later additions will include a restaurant, dry-cleaning establishment, shops and a service station. The center will be owned by H. M. Somers. Negotiations were by Ed C. Metzger, Inc. The building was designed by Johnston-Campbell & Associates of Renton, in cooperation with Thomas E. Sparring, Donald G. Radcliff, and Stanley G. Webster, electrical, structural and mechanical engineers, respectively. It will contain a new-type roof truss, supported on concrete piers. Glass, multicolored concrete panels and stone will be incorporated in the building and a central mall will be of stone. Parking for 250 cars will be provided. Paul Nats Carlton is the contractor. It will be completed about January 1.

Most of the public land on the Bounce under the jurisdiction of the HARTFORD, Conn. — (U) Bureau of Land Management (B.L.M.) — A bar and grill here can be used at the same time was sued for \$25,000 by a for two or more uses, such as a patron who said he was hit by forestry and grazing or for on his way into the place by entry, grazing and watered a customer being bounced out of it.

SEE Regravure Page 46

CALL EA. 4-0633 for a free home-heating survey and estimate on the new American Standard gas hot water boiler.

Installed for as little as **\$550.00**

A. H. Merchant & Co.
145 17th Ave.
SEATTLE 2, WASH.

New basement paint

Loxon

**WON'T RUB OFF...
WON'T PEEL OFF...
WON'T FLAKE OFF!**

- Easy to apply
- One coat covers
- Completely waterproof
- Lovely colors

\$4.23 GALLON

AT LEADING PAINT, HARDWARE, LUMBER AND DEPT. STORES.

PRE-SEASON TRADE-IN

\$20 Allowance on Your OLD OIL HEATER

on a **NEW DUO-THERM HEATER**

Automatic **LIVING LEVEL HEAT**

at \$20 SAVING!

Duo-THERM
OIL HOME HEATERS
with POWER-AIR

4-5 Room Size
Regular \$199.95
TRADE-IN ALLOWANCE... 20.00
NOW YOU \$139.95 PAY ONLY

5-6 Room Size
Regular \$269.95
TRADE-IN ALLOWANCE... 20.00
NOW \$149.95

TERMS \$10 A MONTH

Beautiful new 1958 Duo-Therms in smart Sandalwood finish! Blower circulates heat by force. Turns itself on and off automatically. Gives greater comfort floor to ceiling, saves up to 25% on fuel.

ARONSON'S
FIRST CLASS WITH HARDWARE COMPANY

SEE Regravure Page 46 CALL EA. 4-0633 for a free home-heating survey and estimate on the new American Standard gas hot water boiler.

Installed for as little as **\$550.00**

A. H. Merchant & Co.
145 17th Ave.
SEATTLE 2, WASH.

Most of the public land on the Bounce under the jurisdiction of the HARTFORD, Conn. — (U) Bureau of Land Management (B.L.M.) — A bar and grill here can be used at the same time was sued for \$25,000 by a for two or more uses, such as a patron who said he was hit by forestry and grazing or for on his way into the place by entry, grazing and watered a customer being bounced out of it.

Roomy Twin View Estates Home

Robert Evans, a Boebling engineer, will move with his wife and five children into a new home in Twin View Estates immediately after the Parade of Homes closes next Sunday. He has purchased one of today's featured Times open houses because of its expandability for his large family.

Evans will have many other advantages, among them a 180-degree view of Puget.

DRIVING DIRECTIONS

To reach today's open house in the far North End travel in Aurora Highway to travel in Aurora Highway to the Edmonds cut-off. Turning left, follow Edmonds Way to the West-gate shopping Center which is approximately one and one-half miles from the Aurora Highway. Here turn right at the Shell Station, following Times open-house signs one-half mile to a new development on the hill above Edmonds.

Sound and the Olympic Mountains, a new school across the street, annexation by the City of Edmonds, blacktopped streets, cement curbs, sewers and storm sewers soon to be installed, and native trees for beauty.

Sig Kelstrup, the builder, eventually will construct 94 homes on this site which formerly was owned by Colonel Hochwall, noted big-game hunter and sportsman. His widow sold it to the developer, John Bowen, Kelstrup's superintendent, has chosen many of the home's finishing details. Bowen's architectural education will be evident to viewers who will note his taste in color and materials.

Exterior Is Cedar

The home's exterior is cedar, stained a brownish channel of cedar is horizontal, with narrow vertical siding; above it, the cedar siding is the gable in basket weave, thick butt, interlocking and following the line of the chimney, visible on the exterior, is pale-green rough rabbit, mixed at random with white stone and aspen-green stone — colors which are picked up inside the home.

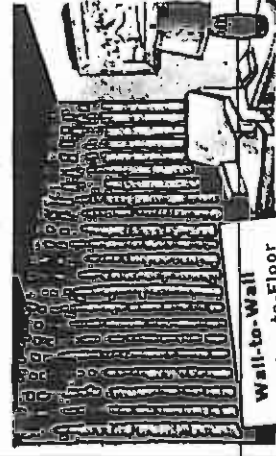
The front entry (where there is a wide obscure glass window and a green slate floor) and the service entry, both face the road behind the house. To separate the main floors and several other good entry from the living room, there is a panel with indirect lighting above.

Trim Is Mahogany — birch, there are ceramic-tile counters, a copper-tone built-in oven and counter range. The architect has taken full advantage of the magnificent view by placing the living room, dining nook and master bedroom all on the sound side. From the living room, visitors may go through sliding-glass doors to the deck half-bath blue fixtures. Both

For a beautiful home you need

Beautiful Draperies

- DESIGNED RIGHT
- MEASURED CORRECTLY
- PROPERLY INSTALLED



Wait-to-Walk Ceiling-to-Floor All Types

- ★ For the Northwest's finest fabric selection
- ★ For big, direct from the mill savings

TAKE ADVANTAGE OF OUR FREE IN-YOUR-HOME SERVICE TELEPHONE NOW

North End South End
SEATTLE BURien
LA 5-7932 CH 4-2980

Yes, we make evening appointments

CREDIT CAN BE ARRANGED

Factory Direct DRAPERIES

BURien SEATTLE
206 S. W. 452nd * 8506 AURORA
CH 4-2980 LA 5-7932

In Yakima, 2528 S. First St., Chestnut 8-0102

Open Planning Gives Feeling Of Spaciousness

For architectural distinction and a feeling of spaciousness, try the popular approach — open planning with division — that allows rooms to flow together visually while keeping individual areas well defined.

Most rooms do not have to be separated completely; yet they need to be designated for use. This can be done by using a partial wall or room divider.

The divider can be functional, holding dishes, knick-knacks or books; or it can be simply decorative. It can be constructed of almost any material — glass, plastic, metal mesh, wood, even spun rayon.

A transvering divider is created of twisted leather ribbons attached to floor and ceiling tracks.

A ladder decoration suggests division and serves as a display for growing plants. Or built like folding screens, as in the bedroom for two girls, a room-separator can provide privacy when desired.

Paul Thiry To Address Architects

Paul Thiry, primary architect for the new Civic Center and Century 21 Exposition, will speak at the first fall meeting of the Washington State Chapter, American Institute of Architects, Thursday evening.

The meeting will be held in the Chinese Room of the Smith Tower.

Reservations will be accepted until Tuesday. Entries will be displayed for the 1958 Awards Competition on design by members of the chapter and the Southwest Washington Chapter, A. I. A. Judging will be held at the Northwest regional conference at Harrison Hotel, Springs, B. C., October 9 to 11.

Special Care Is Advised For Plastic Tops

While laminated plastic—paste or liquid wax gives the kind used on tables and extra surface protection. alk cabinets—will not crack. Never use gritty or abrasive cleaning powders—they may scratch the surface.

What some persons think, be careful. Toasters, percolators, waf- A damp cloth should be used for ordinary cleaning, at- though soap and water, benzol or alcohol can be used safely without padding. An occasional application of

U. S. Supplies Tallow

WASHINGTON — (U.P.L.) The Foreign Agricultural Service estimates that the United States livestock indus- try supplies 95 per cent of the state parks in the United States in 1957, an increase of some 16,000,000 over 1956.

ESTIMATES

MALMO SWEDEN

NEW... "Rancho Royelle"

ALL WOOL RANDOM LOOP By MOHAWK

- Sage Beige
- Pebble Beige
- Mocha Brown
- Sea Green

Reg. 13.95

"PARADE OF HOMES SPECIAL" ... NOW 10.00

Here's a new, exciting feature that will give your rooms a rich, elegant, and friendly look! The Random Loop process makes it extra deep, thick, and springy. And the subtle decorative tones make it the carpet you've always wanted for your home! Take advantage of this special low price... come in and see the complete roll, or choosing from swatches. Fast installation.

Floor Fashions Co.

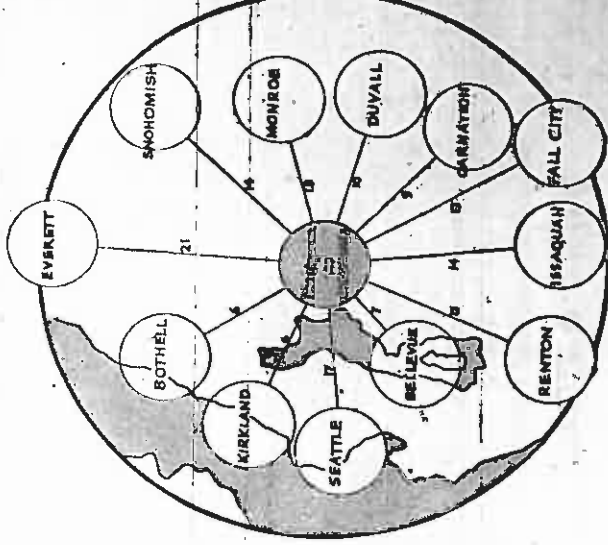
6304 Roosevelt Way Open Fri. Even. Until 9
FIFTH & GULFVAN • ALEXANDER SMITH • DOWNS • MONROE LA 2-5554

REDMOND

center of the whole Puget Sound area

JUST MINUTES AWAY FROM WORK OR PLAY

Minutes from Everett to Rainier to Snohomish



A delightful, convenient area for relaxed, suburban living

Are you looking for a residential location that is near your work yet far enough from the busy, noisy city to enable you and your family to stretch out, relax, enjoy yourselves and really live?

More and more progressive families are finding just such living in Redmond—an area of new, modern dwellings set in the beautiful, natural surroundings of an evergreen area that has everything to offer.

Redmond, as the map so clearly shows, is actually the hub of the highways. Whenever you are employed, you'll find it easy to get to the friendly area.

You'll have a chance to stretch out here. There are thousands of acres planned for residential use, which will permit you to have that piece of acreage and the "week-end farm" you have always wanted.

Investigate all that Redmond offers in the way of delightful country living as well as modern conveniences—and you'll choose this area for your future home!

Convenient to future Maingate Shopping Center.

Average Driving Time to Redmond FROM MINUTES
BOTHELL10
KIRKLAND10
SEATTLE24
BELLEVUE11
RENTON19
ISSAQUAH17
FALL CITY18
CARNATION12
DUVALL11
MONROE15
SNOHOMISH17
EVERETT29

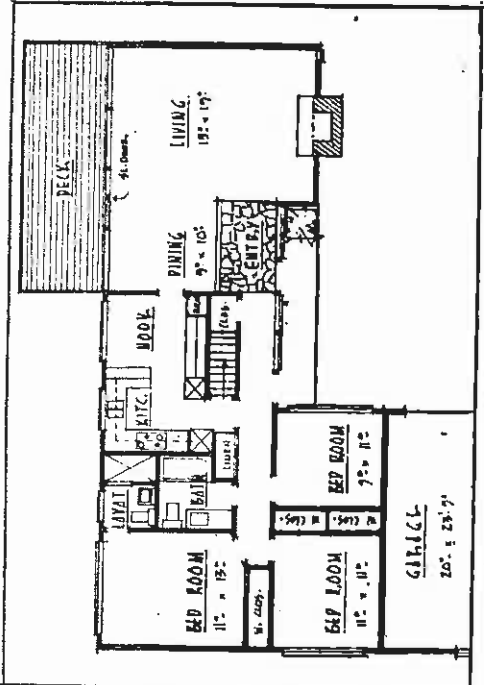
Office 220 W. Harrison



Maingate Seattle 99, AT. 4-7182

OPEN HOUSE: This new home, development where eventually there will be 54 new homes. Sig Kelstrup is the builder. Warren Matton is the architect.

Two houses are open in the new Twin View Estates



FLOOR PLAN: This home has 1,340 square feet on the main floor in addition to the two-car attached garage. It boasts two full baths on the main floor, cantilevered out from the main-floor bathrooms have three more homes similar to this one.

The living room has tile on the floor and on the ceiling. Three bed-will be built in the development. rooms are clustered around the bath area, one of them is yellow, another blue and the third a corinthian coral. The wardrobe doors are louvred.

Two more bedrooms are found downstairs, one of them planned by the Lynwood estate. The lower-floor, furniture Co. and the designer. The room has its own fire-places by Stewart of Edmonds.

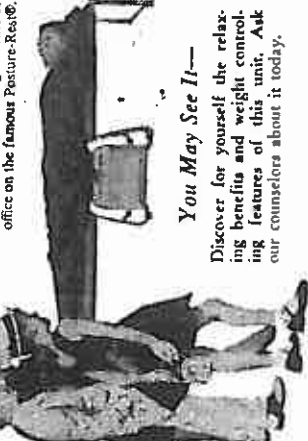
Plans for the entire plot of Twin View Estates have been approved by the F. H. A. vary jet pilot.

AT THE PARADE OF HOMES

Dad discovered a new way to keep slim and trim

...with the STAUFFER HOME REDUCING PLAN

Relaxing—that's the word for it—says Dad. The pleasure and excitement of modern business puts an extra emphasis on diet today. Overweight, overwork and under exercise contribute to this condition. With the Stauffer Home Reducing Plan of effortless exercises and caloric reduction Dad now gets his necessary daily exercise while relaxing at home or office on the famous Posture-Rest.



See At 8600 25th N. E. A "McCall's Home" from the Congress of Better Homes.

THE STAUFFER HOME REDUCING PLAN produces wonderful results for the entire family. It helps further remake her figure and helps teenagers lose "baby fat" and start their mature life with proper posture.

Rent It For A Month—Buy It For 50¢ A Day FOR FREE HOME DEMONSTRATION

CALL MU. 2-5562

OTHER STAUFFER HOME PLAN OFFICES ARE: Richmond 4-1144 Kansas City 4-8884 Walla Walla—Jackson 8-3289 Olympia—Everett 4-7707 Yakima—Gleason 7-7817 Bremerton—East 3-8888 Tacoma—Fulton 3-1404 Everett—Boyler 7-7817 Bellingham 651

Elegance

Marks Home Interiors

by **BLANCHE MORGAN**
 Vice president, Pacific Northwest Chapter, American Institute of Decorators
 An exciting new look in interiors is on the way. New ideas, however, do not come and go each season or each year as they do in apparel but are more gradual in their development.

Leading the list of important design trends is a return to elegance. The incomparable elegance is not the over-elaborate elegance of the past, but a practical, livable elegance which suits the homes of today. International design inspirations, past and present, play an important part in this trend.

Elegance 1958 is exemplified in the fabrics and furniture both from our own country and from the Orient and Europe. From the Orient, we



—BLANCHE MORGAN

have Indian and Indonesian fabrics rich in color and texture, lacquered furniture from Hongkong, beautiful grass cloth, silk and metallic wall papers from Japan as well as Japanese metal-car art ceramics.

Imports are varied. Almost every country is represented in our imports from Europe, Brocade fabrics, reproduction of traditional furniture, both painted and in natural woods, contemporary in design as well as the most modern in materials. Fabrics from Italy, beautiful fabrics and wallpaper from France, linens and carpets from the British Isles and handsome beautifully hand-crafted furniture along with textiles from the Scandinavian countries.

Design Is Important
 Beautifully designed furniture, floor coverings and accessories are ages.

With so many influences to be combined, the client can achieve the most rewarding results by working with a qualified interior designer.

The American Institute of Decorators, an organization which sets the standards and qualifications for the interior-designing profession, defines a qualified designer as "one who, by training and experience is qualified to plan, design and execute interiors and their furnishings and supervise the various artists and crafts essential to their completion." Not every qualified designer is a member of the Institute, any more than every artist is a member of the National Academy or every architect is a member of the American Institute of Architects.

Buddhist priests have their meal of the day at which they do not touch a food except until the following morning. Silver dollars have not been minted since 1933.

SEE

Rotogravure Page 45
CALL PA. 2-7785
 for a

free home-heating survey and estimate on the new American-Standard gas hot water boiler.

Installed for as little as
\$18.07

Per Month

24 coverage 6-month home-heating term. 3-YEAR GUARANTEE. Best cast-iron sections. Working care of the boiler.

Central Gas Is Safe, Clean, Economical

SUBURBAN PLUMBING & HEATING
 1315 4th St., S.W.
 PAL 8718



BOYS LIKE BASEMENTS: A school pupil's model house, complete with basement and deck, showed adults what a teen-age boy thought important when he designed a home for today. Here, from left, at a meeting of the Seattle School Board with local builders and realtors, were

Robert Curry Buys Kirkland Realty Firm

Robert H. Curry, broker Mrs. Maude Faulkner will be with Curry in the Bellevue Real Estate and Insurance Agency, Maynard Nelson, who worked in the office for seven years, will be manager.

Philip Conrad, a partner as commercial sales manager at Robert B. Burg Kirkland Real Estate and Insurance Agency, Maynard Nelson, who worked in the office for seven years, will be manager.

Realty Brokers Hire Full-Time Photographer

The appointment of a full-time photographer to the staff of the North End Brokers Association, Seattle Real Estate Board, is a home listing with any real estate listing. A member of the association automatically lists it with all members, giving the property a wide sales range.

Over 1,200,000 acres in the United States classified as "undeveloped land" only one third is actually reclaimed.

Bedrooms are smaller than they were a generation ago, leading to a general "Wanted To Buy" ad, the use of M.A.I.N. 2-0300 for a friendly ad later to help you.

SEE
 Rotogravure Page 46
CALL AT. 4-1150

for a free home-heating survey and estimate on the new American-Standard gas hot water boiler.
 Installed for as little as

\$565

• in coverage 6-month home-heating term. 3-YEAR GUARANTEE. Best cast-iron sections. Working care of the boiler.

Central Service Sales, Inc.

—24 Hour Service—
 440 Broad AT. 4-1150

If you don't see what you want in **TIMES WANT ADS**, place a "Wanted To Buy" ad. Use M.A.I.N. 2-0300 for a friendly ad later to help you.

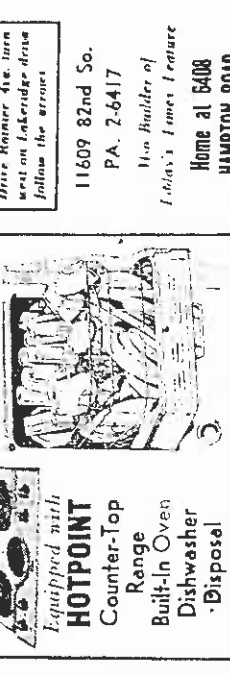
SEMI-TEMPORARY
 8029 SOUTH 113th STREET
 Designed by Kenneth Koehler, Architect



For Better Living and Excellent Environment for your children...
 Has Panoramic Lake Washington View.
 2 Fireplaces—Family Room—3 Bedrooms.
 2 Complete Baths—2 Skylights—Select Red Birch Cabinet.
 Full Daylight Basement with finished Recreation Room, plus room to expand to 4th bedroom.
 Sliding glass doors to Patio. 2-car Carport. **\$22,500**
 Lot 60x140 ft. All improvements in.

JOHN CONNER:
 Thanks ABAC Corp. for their last service supplying appliances for this home, making it available for parade.

HOTPOINT
 Counter-Top Range
 Built-In Oven Dishwasher
 Disposal



JOHN CONNER
 11609 82nd So.
 PA. 2-6417
 The Builder of
 Home at 6408
 HAMPTON ROAD

WOMEN'S CONFERENCE ON HOUSING QUESTIONNAIRE

This questionnaire was designed to give American women, for the first time, an opportunity to register their views on housing. It will be used for study purposes only. Without personal identification, and will not affect the judging of your entry. Your reply will help guide home builders in providing the kind of homes YOU want.

1. Do you own your home? Yes No
 2. How long have you lived in your home? _____ years. Approx. value of home \$ _____
 3. How many bedrooms are there in your home? _____
 4. How many bathrooms are there in your home? _____
 5. How many living rooms are there in your home? _____
 6. How many dining rooms are there in your home? _____
 7. How many bedrooms are there in your home? _____
 8. How many bedrooms are there in your home? _____

9. If you have an attic, how do you use it?
 10. If you have an attic, how do you use it?
 11. If you have an attic, how do you use it?
 12. If you have an attic, how do you use it?

13. Do you have an attic? Yes No
 14. Do you have an attic? Yes No
 15. Do you have an attic? Yes No
 16. Do you have an attic? Yes No
 17. Do you have an attic? Yes No

18. Do you have an attic? Yes No
 19. Do you have an attic? Yes No
 20. Do you have an attic? Yes No
 21. Do you have an attic? Yes No
 22. Do you have an attic? Yes No
 23. Do you have an attic? Yes No
 24. Do you have an attic? Yes No
 25. Do you have an attic? Yes No

Bedrooms are smaller than they were a generation ago, leading to a general "Wanted To Buy" ad, the use of M.A.I.N. 2-0300 for a friendly ad later to help you.

SEE
 Rotogravure Page 46
CALL AT. 4-1150

for a free home-heating survey and estimate on the new American-Standard gas hot water boiler.
 Installed for as little as

\$565

• in coverage 6-month home-heating term. 3-YEAR GUARANTEE. Best cast-iron sections. Working care of the boiler.

Central Service Sales, Inc.

—24 Hour Service—
 440 Broad AT. 4-1150

PARADE OF HOMES Thoughts OF A FAMILY MAN

I wanted a home, close to schools—yet in a fine residential suburban area that has a wonderful environment for my children. One with plenty of room to grow in and

WILDWOOD LANE Fills the Bill "It's" 10632 N. E. 45th 10632 N. E. 45th Brick and Siding 6 Big Rooms 2-Car Garage Double Plumbing Level Lot Paved Street

FLOWERS REALTY
 520 KIRKLAND WAY VA. 2-2204



VISIT A COMFORT-CONDITIONED HOME see why it's the right new home for your family

Now you can see for yourself the new Comfort-Conditioned Homes you've been reading about in LIFE magazine. These are the homes with Full Fiberglass Insulation built in for living comfort with low-cost possible fuel bills... for air-conditioning now or later at a price you can afford! These are the homes with Full HOUSE-POWER built in... at least 3-wire, 100-ampere service... enough electrical wiring and enough outlets to bring you every convenience... the appliance wonders of today... and to provide for future expansion. In a Comfort-Conditioned Home you get these two essentials—Full Insulation and Full Housepower—plus dozens of other better-living features that you must see to appreciate. When you see a Comfort-Conditioned Home sign out front, you know you're visiting a home with deep-down values that will make it worth more for years to come. One of the new Comfort-Conditioned Homes listed below is bound to be just the house your family has been looking for. **SEE IT AT THE COMFORT-CONDITIONED HOMES SHOW, 1201 1st St. N. W., Seattle, Wash., Oct. 18-19, 1958.**

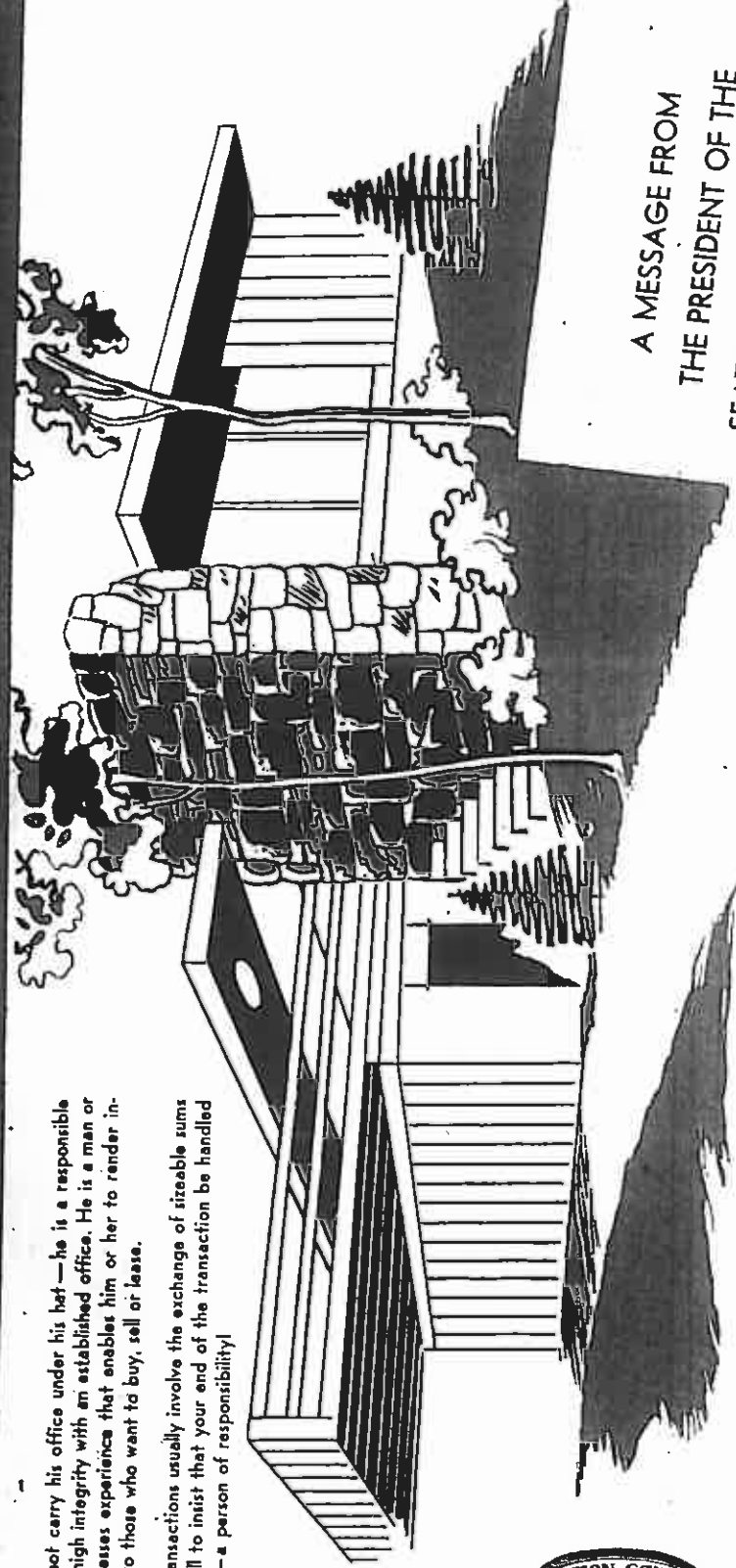
- TODAY—SEE ONE OR ALL OF THESE COMFORT-CONDITIONED HOMES**
- BUILDER: J. J. EDWARDS CONSTRUCTION COMPANY**
 Location: 21st & 21st Wood- (Lake Houghton)
 - BUILDER: BELL & VALDEZ**
 Location: 427 Bellevue, (Lake Hills)
 - BUILDER: BESTWAY-BUILDING CENTER**
 Location: 110 N. Washington St., Kennewick
 - BUILDER: BLUMSTAD & McLAUGHLIN**
 Location: 6807 Blunt Way Everett, (Country Club Addition)
 - BUILDER: R. S. STANLEY CONSTRUCTION COMPANY**
 Location: 246 100th N.E. Bellevue, (Cotton Wood Hill)
 - BUILDER: EL DORADO HOMES, INC.**
 Location: 12012 1st N. W., Seattle (El Dorado Lane)
 - BUILDER: GROVE CONSTRUCTION COMPANY**
 Location: 328 44th, (Harrison Heights)
 - BUILDER: MAR-VISTA, INC.**
 Location: 2401 126th N. E. Bellevue, (Mer View)
 - BUILDER: NEW LUMBER & HARDWARE**
 Location: 2086 1st St. N., Highway 50, Everett, (Lunch Club Addition)
 - BUILDER: PUGET SOUND HOMES**
 Location: Route 4 Box 1177 Bremerton.
 - BUILDER: STROMBERG CONSTRUCTION COMPANY**
 Location: 10413 Glenwood Drive S. W., Tacoma, (Glenwood Acres)
 - BUILDER: ONEENSTREET CONSTRUCTION COMPANY**
 Location: 1406 Seaside St., Mt. View, (Greenbelt Addition)

You're Paying for a Realtor's Expert Services

... Why not enjoy the benefits?

A Realtor does not carry his office under his hat—he is a responsible business man of high integrity with an established office. He is a man or woman who possesses experience that enables him or her to render intelligent service to those who want to buy, sell or lease.

As Real Estate transactions usually involve the exchange of sizeable sums of money, it's well to insist that your end of the transaction be handled by a REALTOR—a person of responsibility!



A MESSAGE FROM THE PRESIDENT OF THE SEATTLE REAL ESTATE BOARD

If you are selling, buying, exchanging or leasing property, let your REALTOR be the sentry guarding your interest. Through his association with the National Association of Real Estate Boards and the Seattle Real Estate Board he has a solid knowledge of market values and a keen insight into foreseeable trends. He has earned the title "REALTOR" and has been approved by his fellow Realtors as worthy of the professional designation.

Vernon Brice, President
SEATTLE REAL ESTATE BOARD

THIS MESSAGE MADE POSSIBLE BY THESE REALTORS

AAA REALTY
John E. Birkens, R.E., Director
7731 24th N.W. SU 2-2020

ACTIVE REALTY, Realtor
Home—Average—View—Fench
Lynwood—Dial Prospect 8-1194

ALDERWOOD REALTY, RLTR
Specializing in Alderwood Homes
& Marine Lake Areas. PR 8-4211

ALVIN BILLINGS, RLTR.
The Home Finder
7747 24th N.W. SU 2-4700

BETTER HOMES REALTY
"Better Homes—a Specialty"
10832 Greenwood—EM 4-1133

BOARD OF TRADE
Trade—Real Estate—SU 2-2277
1410 N. Robson—LA 5-9470

BROADVIEW REALTY
Specializing in Bird's Nest Apts
11725 Greenwood—EM 2-0400

C. B. ARGENT
Your Better Home Realtor
13744 First Ave. N.E. EM 2-8328

CLIFF BALTER
The Real Estate Broker
1925 16th N.W. SU 3-4414

COOPER REALTY CO.
Green Lake & North End District
7400 Aurora—LA 2-8008

DESMOND & STRAFFER, INC.
Real Estate Investments
909 East 45th—ME 3-2800

DOM LOMBARD, Realtor
"Complete Real Estate Service"
4228 University Way. ME 2-0103

DOROTHY M. BOTT, Realtor
New Homes & Custom Builders
11010 16th Way. EM 2-7880

EDMUNDS REALTY, Realtor
Specializing in Edmunds Area
837 W. Main, Edmonds—PR 8-4717

ELM KNEE RLTY., Realtors
Specializing in North End Property
14200 16th N.E. EM 2-8855

FREDERICKSON REALTY
"Edmonds Specialty"
312 Main St., Edmonds. PR 8-4548

GLADYS J. WATSON
Over 20 Years in Real Estate
7814 Greenwood Ave. SU 4-5540

GLENN J. TWIGG, REALTOR
For Island Buy!
2328 Maribel St. SU 4-1285

R. A. CROSS & CO.
City, Average, Washington
11727 16th N.E. EM 3-0900

MARY B. OLSON, INC.
Mortgage Loans—Fns. Homes
Real Estate—Trade—A Specialty
7209 Woodlawn Ave. LA 2-0180

HENDERSON REALTY CO., RLTR.
Specializing in North End Homes
6645 16th Ave. N.W. SU 4-1265

HOMETOWN REALTY
"THE SINKING OF THE SINK"
817 N. 45th—SU 3-0600

IRENE FARRELL, REALTOR
Homes North & Business Properties
1102 E. 42nd—ME 3-5344

JUDITH I. ELLIOTT, Realtor
On the Way to Larchmont
2444 East 45th—LA 2-1967

LITTON MURRAY
Northeast Home of Quality
3414 E. 56th—LA 4-3333

—LORRAINE TUTMAR REALTY
7828 East Avenue of Homes 4-5010

LYVAL REALTY, Realtor
Chiefs, Northwest Properties
7727 24th N.W. SU 3-1100

MCCORMACK'S REALTOR
Offices to Serve You
2201 University Way. LA 5-8300

1420 Greenwood Ave. SU 2-3164
12215 16th Way. EM 2-4771

18446 Pac. Hwy. S. CH 3-1000
3004 Greenwood—SU 3-9100

MARGUERITE WILKINSON
For Franchise Homes
6725 Greenwood Ave. SU 2-4840

MARTHA LAKE REALTY
Washington—Fench—PR 8-4543
Alderwood—Fench—PR 8-4543

MARTIN REALTY COMPANY
Farm & Island prop. Specialists
1811 16th Ave. N. LA 2-7774

MARTHA SCAMARNO, REALTOR
Exclusive North End Residential
4005 18th N.E. ME 2-6445

MODERN HOME BUILDERS, RLTR.
Fench—Residential—Sales
& Marine Lake Areas. PR 8-1116

MORRISON REALTY
Specializing in North End Homes
2761 E. 45th—LA 5-7000

MUTUAL REALTY INC.
Healthy Need Not Be Cautious
4718 University Way—EM 2-5500

NORTH BEND REALTY
Lobby—Thompson Homes—Box 62
North Bend Phone N. R. 88-1352

NORTH EAST REALTY
Specializing in Homes Northeast
6060 16th Way—LA 5-9011

PICTURE FLOOR PLANS, INC.
Housed Plans, Pat. Off. to Save You
& Offices to Serve You

PRESTON REALTY
S.1. Oper. Inv.—Real Est. Inv.
8244 16th Way—LA 5-6490

RANCHO HOMES, INC.
North End Specialist
11204 Roosevelt Way. EM 4-3130

RANCHO HOMES INC., Realtors
New Homes & Suburban Property
10042 Aurora Ave. Lincoln 2-1851

RAY B. WALKER REALTY
QUALITY HOMES
7514 16th N.W. SU 3-2377

ROBERT A. JOHNSON, Realtor
HOMES & INVESTMENTS
Lynwood—PR 2-1148

ROTH SUTHERLAND, REALTOR
HOMES—INCOME—AGREEMENT
1419 North 45th—ME 2-5855

RYAN REALTY
Seattle Real Estate Board Director
1616 North 45th—ME 2-5925

SEATTLE HERBERT RITY.
Chestnut Suburban & Astoria
21421 Hwy. 99 (N). PR 8-2901

SPILK & ASSOCIATES
Wedgewood Shopping Center
3256 E. 45th—LA 5-6400

SIDNEY SMITH REAL ESTATE
Radio—Member N.E.A.
3140 University Way. ME 2-9490

UNIVERSITY HOMES
Home Specialists of North End
5551 University Way. LA 4-4848

VODA MORAN, REALTOR
North End Homes A Specialty
7830 20th N. LA 5-4440

VERA TATE REALTY
Real Estate—North End District
7531 16th Way—LA 2-1859

WALT BINZ, REALTOR
Insurance—Real Estate
10018 N. E. 12th—HU 4-1218

CHARLES WAR, REALTOR
Home & Investment Property
817 7th Ave. S. MA 3-2100

DAVIS AND BARNELL
Real Est. Consultants, Appraisers
728 United Pac. Bldg. MA 3-6984

DAVID STRAY REALTY
Home—Commercial Properties
2001 Taylor Way—East 2-4930

DEON MOYLE REALTY, RLTR.
For Sale in Queen Anne Properties
424 W. McGraw—AT 3-4683

EDITH GRADY'S
Magnolia Rty. 3408 W. McGraw
AT 3-8400, AT 3-2181

EWING & CLARK
"Real Estate Service Since 1900"
1104 3rd (Main Office) MA 4-3033

THE OPPENHIMS, Realtors
Magnolia, Fench—Offices
3312 W. McGraw—AT 3-4044

TOM REVELLE, REALTOR
Valley, Washington—Investments
Valley PD 3-4424

VINCENT D. MILLER, INC.
Real Estate, Inc. & Prop. Mgr.—
1119 4th Ave. MA 2-6460

WEST & WHEELER ASSOC. INC.
Real Estate Spec. 1883
2nd & Marion—East EL 2-5232

WHITE & BOLLARD, INC.
New Port Hills
2333 3rd Ave.
AD 2-3499; MA 3-4711

SUBURBAN SALES, INC.
Hobb & Narducci Homes
Watson—Fench—Homes
103104th NE Bellevue GL 2-2419
or Everette Office. SH 2-2550

SWEENEY-OWENS
Properties East of Lk. Washington
10656 N.E. 8th—GL 4-2487

ATOMIC REALTY
Southwest Seattle Properties
12113 Empire Way. PA 5-5558

BOB WAFF, REALTOR
Home—Fench—Homes
11844 University Way. CH 2-7877

C. RALPH FLEMING, REALTOR
The Best in Suburban Living
Federal Office—PR 2-2641
Fench Office—Fench 2-2101
Buckley Office—Valley 9-2343

COTTAGE REALTY, KENT
Country Homes, Farm Investments
Kent, UL 2-2465 or UL 2-1974

DRUM REALTY, Realtors
South End Real Estate
1407 Rajcar Ave. PA 2-1900

E. A. HAMRE, REALTOR
Beacon Hill Homes A Specialty
2710 Beacon Avenue. EA 4-1254

FRED HENDROFF, REALTOR
KENT AREA HOMES
713 W. Meier, Kent. UL 2-9972

GORDON & SONS
Southend Homes
6017 Airport Way. PA 2-9427

HUB REAL ESTATE
LEWIS FERRETTI, Realtor
203 1/2 Sunset Bld. Rtn. AL 8-2484

RUSSELL REALTY
Ranley Area Homes & Acreage
11925 Sunset Bld. Rtn. AL 8-3164

INTERNATIONAL REALTY
5th—East—Home & Commercial
489—Juniper St.

LAND O' LAKES REALTY
For Real Estate in Kent area
216 No. Central—UL 2-1010

J. R. SCOBE REALTOR, OWNER
Homes, Commercial—LeBach Rty.
14009 Pa. Hwy. S. 99 CH 3-2200

L. G. JUSTICE, REALTOR
School Homes—Southwest District
18041 1st So. CH 3-1185

MCKENZIE REALTY
Commercial—Valley Way CH 3-2400

MEHTOSH REALTY, RLTR.
12005 DuaneWay, CH 3-2110

O. L. PARSONS, RLTR.
Specializing in South End Properties
15221 1st Ave. S. CH 3-1010

ORMAN SMITH, REALTOR
S. Kent—Country—Investments
Hwy. S. & University—PR 8-2631

RENTON RITY, CO.—
M. J. LACKI, RLTR.
Specializing in S. End Properties
813 3rd. Renton. AL 8-1841

ROY R. EMMETT CO., REALTORS
South—Commercial—Specialists
13313 1st So. CH 2-2142

RUSSELL O. YOUNG, REALTOR
Specializing in Fench—Homes
15221 1st Ave. S. CH 3-1010

SEATTLE HOUSE & HOMES, INC.
Real Estate Sales & Construction
1925 Pac. Hwy. S. CH 3-1008

SUNSET PARK REALTY
New Homes—Investment
19248 Pac. Hwy. S. TR 2-5314

T. FRED LINDE, REALTOR
Fench—Home—Sales—East
14441 Pac. Hwy. S. CH 3-4900

VALLEY RITE, RLTR. & End
Property, Eleanor—Renton, Fench
4421 Rialto Ave. PA 2-8008

WAYNE BRADSHAW, REALTOR
Suburban—Acreage—West Valley
211 N. Central, West Valley
White House Realty

BILL LAWRENCE, REALTOR
Acreage Specialist
Dial EX 2-3700 or GL 4-2813

EAST CHANNEL, REALTOR
Waterfront—Marine Id. Property
Call His Sandler Litz, AD 2-1199

EASTSIDE HOMES INC. REALTOR
Ball & Valder Homes
Lido Hills

FARMER JONES, INC.
Redmond, Wash. TU 6-1231

FLOWERS, REALTOR
Serving Kirkland Area
920 Kirkland Wy. Kirk. VA 2-2264

GARDNER REAL ESTATE CO.
Eastside—Residential—Commercial
& Lake St. Kirkland. VA 2-6024

GEO. LISTER, INC.
Merger—Real Estate
Mariner—Investment—AD 2-6444

GEO. LISTER, INC.
Eastside—Lake Properties
Waterfront—Commercial—Homes
Bellevue—GL 4-8121

GIL AUSTRY, REALTY
Merger—Investment—Properties
Boyd Bldg. Mar. Id. AD 2-3222

GUY STICKNEY, INC. REALTOR
East Side Properties—Bellevue
202 104th N. E.

LAKE SHAWANISH REALTY
COMMERCIAL—WATERFRONT
Emmett Bldg. Greater SH & 1841

LELAND & LUNDVALL Real Est.
112 Kirkland Ave., In Kirkland
Dial VA 2-2262, VA 2-5713

PARKS REALTY, Realtor
Specializing, East Side Properties
106 1st St. S. Kirkland VA 2-2378

PETROCK REALTY, Realtors
Home—Acreage—Investments
Merger—Island—Adams 2-0910

PICTURE FLOOR PLANS
This Home List of the Lakes
115-104th NE, Bellevue GL-4-3331

RAY SHAPLETT, INC.
Lake—Shawnaish—SH 4-1100
Bellevue, Dependable Service.
Lakeway Area. Parkway 2-0737

ROBT. B. BORG, REALTORS
Sub-Districts & Districts
2400 University Bldg.—MA 2-7525

REYNOLDS REALTY
Magnolia—AT 2-0040

ROBERT BANS, REALTOR
Income Producing Real Estate
444 Dexter Home, Bg. MA 2-0350

ROY R. ATWELL
2245 32nd W. AT 4-4224

SEATTLE MORTGAGE REALTY CO.
Russell Smith, Realtor
Carl Seaber, Prop. Mgrt.
1010 3rd Ave. MA 4-6000

SEATTLE INVESTMENT CO., INC.
Thomas A. Alberg, President
1919 5th Avenue. MA 4-3033

THE OPPENHIMS, Realtors
Magnolia, Fench—Offices
3312 W. McGraw—AT 3-4044

TOM REVELLE, REALTOR
Valley, Washington—Investments
Valley PD 3-4424

VINCENT D. MILLER, INC.
Real Estate, Inc. & Prop. Mgr.—
1119 4th Ave. MA 2-6460

WEST & WHEELER ASSOC. INC.
Real Estate Spec. 1883
2nd & Marion—East EL 2-5232

WHITE & BOLLARD, INC.
New Port Hills
2333 3rd Ave.
AD 2-3499; MA 3-4711

HELEN M. PERLATTI
Realtor for Barbidge Properties
Sub offices to serve you
Dial VI 2-2681

HENRY BRODERICK, INC.
An office that knows its subject
2nd & Cherry MA 2-4350

J. J. BLOMER & CO.
For Better Homes & Cos.
2008 E. Union EA 2-1704

JOHN DAVIS & CO.
"Fine Homes Since 1888"
2nd & University Bldg. MA 2-1200
Lk. Wash. & Madison GL 4-8134

JOHN L. SCOTT
1000 Sycamore Ave. MA 2-9216
Mariner Village GL 4-2427
Mariner Island AD 2-4860

JOSEPH GOTTSTEIN
614 Skinner Bldg.
AT 2-7272

KATHLEEN OWENS
Magnolia 3114 W. McGraw
AT 2-7272

KELVIN GREENSTREET
Real Est. Consultant & Appraiser
2nd & Cherry Bldg. MA 4-4411

LEEMARK RLTR.—APPRAISERS
Wholesale—Average—Commercial
411 5th—Mariner—Commercial
MA 2-9489

LEONARD A. WILSON, REALTOR
Queen Anne Properties
2229 Queen Anne—AT 2-5871

MARTIN & DAVIS
Home—Insurance
633 Queen Anne AT 4-6068

MCCUTCHEEN REALTY, Realtors
N. Broadway, Capitol Hill
Homes & Income
EA 2-8511—Mr. McCutchen
MA 4-3480

BERLEN J. MOORE, Realtor
Bellevue, Dependable Service.
408 18th N. LA 5-4000

POPE & YALOW, INC.
Sub-Districts & Districts
2400 University Bldg.—MA 2-7525

ASSOCIATED BROKERS, INC.
"Check" Hackett—G. A. Broughton
4033 35th S. W. WE 5-8484

CALIFORNIA AVE. REALTY
Gene Paas, Realtor
4019 California Ave. WE 8-4000

CASTLE HOMES REALTY
W. Seattle—Valley Properties
4313 California Ave. WE 8-8900

F. R. SAYAGE, INC.
4424 California Ave. WE 2-6161
9018 16th S.W. WE 5-8815

FREE FIELDS REALTY, Realtor
Home—Business Opportunities
4130 Admiral Way WE 8-4000

HANNING REALTY
Tony O. Hanning, Rty.
7790 9th Ave. S. W. WE 7-4004

Jessie Richards & Olmava, Inc.
Realton, Local, Window, Roubidou
Ph. Poubo 8-3010 dial V2-2333

NETA BENSON, Realtor
West Seattle Building
2705 California Ave. WE 2-1121

ORCHARD REALTY, Realtors
S. Suburban and Valton Homes
4001 35th S. W. WE 7-3900

PORT OF SEATTLE
Provides up to \$1,000,000 financing
1310-4th Ave. MA 2-5811

Pacific 1st Federal Savings & Loan Association
Incorporated—Home Loans
1310-4th Ave. MA 2-5811

PORT OF SEATTLE
Puget Sound National Sav. Bank
MADN OFFICE: 2nd & Madison,
MU 2-9700; Northgate MU 2-9794

ASSOCIATED BROKERS, INC.
"Check" Hackett—G. A. Broughton
4033 35th S. W. WE 5-8484

CALIFORNIA AVE. REALTY
Gene Paas, Realtor
4019 California Ave. WE 8-4000

CASTLE HOMES REALTY
W. Seattle—Valley Properties
4313 California Ave. WE 8-8900

F. R. SAYAGE, INC.
4424 California Ave. WE 2-6161
9018 16th S.W. WE 5-8815

FREE FIELDS REALTY, Realtor
Home—Business Opportunities
4130 Admiral Way WE 8-4000

HANNING REALTY
Tony O. Hanning, Rty.
7790 9th Ave. S. W. WE 7-4004

Jessie Richards & Olmava, Inc.
Realton, Local, Window, Roubidou
Ph. Poubo 8-3010 dial V2-2333

NETA BENSON, Realtor
West Seattle Building
2705 California Ave. WE 2-1121

ORCHARD REALTY, Realtors
S. Suburban and Valton Homes
4001 35th S. W. WE 7-3900

PORT OF SEATTLE
Provides up to \$1,000,000 financing
1310-4th Ave. MA 2-5811

Pacific 1st Federal Savings & Loan Association
Incorporated—Home Loans
1310-4th Ave. MA 2-5811

PORT OF SEATTLE
Puget Sound National Sav. Bank
MADN OFFICE: 2nd & Madison,
MU 2-9700; Northgate MU 2-9794

ASSOCIATED BROKERS, INC.
"Check" Hackett—G. A. Broughton
4033 35th S. W. WE 5-8484

CALIFORNIA AVE. REALTY
Gene Paas, Realtor
4019 California Ave. WE 8-4000

CASTLE HOMES REALTY
W. Seattle—Valley Properties
4313 California Ave. WE 8-8900

F. R. SAYAGE, INC.
4424 California Ave. WE 2-6161
9018 16th S.W. WE 5-8815

FREE FIELDS REALTY, Realtor
Home—Business Opportunities
4130 Admiral Way WE 8-4000

HANNING REALTY
Tony O. Hanning, Rty.
7790 9th Ave. S. W. WE 7-4004

Jessie Richards & Olmava, Inc.
Realton, Local, Window, Roubidou
Ph. Poubo 8-3010 dial V2-2333

NETA BENSON, Realtor
West Seattle Building
2705 California Ave. WE 2-1121

ORCHARD REALTY, Realtors
S. Suburban and Valton Homes
4001 35th S. W. WE 7-3900

PORT OF SEATTLE
Provides up to \$1,000,000 financing
1310-4th Ave. MA 2-5811

Pacific 1st Federal Savings & Loan Association
Incorporated—Home Loans
1310-4th Ave. MA 2-5811

PORT OF SEATTLE
Puget Sound National Sav. Bank
MADN OFFICE: 2nd & Madison,
MU 2-9700; Northgate MU 2-9794

ALBERT BALCH, Community Bkr.
CRAWFORD & CONOVER, INC.
Seattle's Oldest R. E. Firm

ANDERBECK-HEIDRECKER
Queen Anne & Magnolia Homes
615 E. Queen Anne AT 3-4448

BLUME REALTY, REALTOR
Queen Anne & Magnolia Homes
17 1/2 Senior—LA 5-8811

BURWELL & MAPOFF
Mortgage Loans, R. E. Inc.
Prop. Management
878 Calman Bldg. MA 2-1848

CARROLL MORTGAGE CO.
414 Olive Way. MA 4-3480

CENTRAL REALTY
Home—Income
121 Eastern—AT 4-1818

CLYTON ALBERTSON, RLTR.
Sub-Districts & Districts
1840 Olive Way—4812 24th N.W.

ALBERT BALCH, Community Bkr.
CRAWFORD & CONOVER, INC.
Seattle's Oldest R. E. Firm

ANDERBECK-HEIDRECKER
Queen Anne & Magnolia Homes
615 E. Queen Anne AT 3-4448

BLUME REALTY, REALTOR
Queen Anne & Magnolia Homes
17 1/2 Senior—LA 5-8811

BURWELL & MAPOFF
Mortgage Loans, R. E. Inc.
Prop. Management
878 Calman Bldg. MA 2-1848

CARROLL MORTGAGE CO.
414 Olive Way. MA 4-3480

CENTRAL REALTY
Home—Income
121 Eastern—AT 4-1818

CLYTON ALBERTSON, RLTR.
Sub-Districts & Districts
1840 Olive Way—4812 24th N.W.

ALBERT BALCH, Community Bkr.
CRAWFORD & CONOVER, INC.
Seattle's Oldest R. E. Firm

ANDERBECK-HEIDRECKER
Queen Anne & Magnolia Homes
615 E. Queen Anne AT 3-4448

BLUME REALTY, REALTOR
Queen Anne & Magnolia Homes
17 1/2 Senior—LA 5-8811

BURWELL & MAPOFF
Mortgage Loans, R. E. Inc.
Prop. Management
878 Calman Bldg. MA 2-1848

CARROLL MORTGAGE CO.
414 Olive Way. MA 4-3480

CENTRAL REALTY
Home—Income
121 Eastern—AT 4-1818

CLYTON ALBERTSON, RLTR.
Sub-Districts & Districts
1840 Olive Way—4812 24th N.W.

ALBERT BALCH, Community Bkr.
CRAWFORD & CONOVER, INC.
Seattle's Oldest R. E. Firm

ANDERBECK-HEIDRECKER
Queen Anne & Magnolia Homes
615 E. Queen Anne AT 3-4448

BLUME REALTY, REALTOR
Queen Anne & Magnolia Homes
17 1/2 Senior—LA 5-8811

BURWELL & MAPOFF
Mortgage Loans, R. E. Inc.
Prop. Management
878 Calman Bldg. MA 2-1848

CARROLL MORTGAGE CO.
414 Olive Way. MA 4-3480

CENTRAL REALTY
Home—Income
121 Eastern—AT 4-1818

CLYTON ALBERTSON, RLTR.
Sub-Districts & Districts
1840 Olive Way—4812 24th N.W.

ALBERT BALCH, Community Bkr.
CRAWFORD & CONOVER, INC.
Seattle's Oldest R. E. Firm

ANDERBECK-HEIDRECKER
Queen Anne & Magnolia Homes
615 E. Queen Anne AT 3-4448

BLUME REALTY, REALTOR
Queen Anne & Magnolia Homes
17 1/2 Senior—LA 5-8811

BURWELL & MAPOFF
Mortgage Loans, R. E. Inc.
Prop. Management
878 Calman Bldg. MA 2-1848

CARROLL MORTGAGE CO.
414 Olive Way. MA 4-3480

CENTRAL REALTY
Home—Income
121 Eastern—AT 4-1818

CLYTON ALBERTSON, RLTR.
Sub-Districts & Districts
1840 Olive Way—4812 24th N.W.

ALBERT BALCH, Community Bkr.
CRAWFORD & CONOVER, INC.
Seattle's Oldest R. E. Firm

ANDERBECK-HEIDRECKER
Queen Anne & Magnolia Homes
615 E. Queen Anne AT 3-4448

BLUME REALTY, REALTOR
Queen Anne & Magnolia Homes
17 1/2 Senior—LA 5-8811

BURWELL & MAPOFF
Mortgage Loans, R. E. Inc.
Prop. Management
878 Calman Bldg. MA 2-1848

CARROLL MORTGAGE CO.
414 Olive Way. MA 4-3480

CENTRAL REALTY
Home—Income
121 Eastern—AT 4-1818

CLYTON ALBERTSON, RLTR.
Sub-Districts & Districts
1840 Olive Way—4812 24th N.W.

ALBERT BALCH, Community Bkr.
CRAWFORD & CONOVER, INC.
Seattle's Oldest R. E. Firm

ANDERBECK-HEIDRECKER
Queen Anne & Magnolia Homes
615 E. Queen Anne AT 3-4448

BLUME REALTY, REALTOR
Queen Anne & Magnolia Homes
17 1/2 Senior—LA 5-8811

BURWELL & MAPOFF
Mortgage Loans, R. E. Inc.
Prop. Management
878 Calman Bldg. MA 2-1848

CARROLL MORTGAGE CO.
414 Olive Way. MA 4-3480

CENTRAL REALTY
Home—Income
121 Eastern—AT 4-1818

CLYTON ALBERTSON, RLTR.
Sub-Districts & Districts
1840 Olive Way—4812 24th N.W.

ALBERT BALCH, Community Bkr.
CRAWFORD & CONOVER, INC.
Seattle's Oldest R. E. Firm

ANDERBECK-HEIDRECKER
Queen Anne & Magnolia Homes
615 E. Queen Anne AT 3-4448

BLUME REALTY, REALTOR
Queen Anne & Magnolia Homes
17 1/2 Senior—LA 5-8811

BURWELL & MAPOFF
Mortgage Loans, R. E. Inc.
Prop. Management
878 Calman Bldg. MA 2-1848

CARROLL MORTGAGE CO.
414 Olive Way. MA 4-3480

CENTRAL REALTY
Home—Income
121 Eastern—AT 4-1818

CLYTON ALBERTSON, RLTR.
Sub-Districts & Districts
1840 Olive Way—4812 24th N.W.

ALBERT BALCH, Community Bkr.
CRAWFORD & CONOVER, INC.
Seattle's Oldest R. E. Firm

ANDERBECK-HEIDRECKER
Queen Anne & Magnolia Homes
615 E. Queen Anne AT 3-4448

BLUME REALTY, REALTOR
Queen Anne & Magnolia Homes
17 1/2 Senior—LA 5-8811

BURWELL & MAPOFF
Mortgage Loans, R. E. Inc.
Prop. Management
878 Calman Bldg. MA 2-1848

CARROLL MORTGAGE CO.
414 Olive Way. MA 4-3480

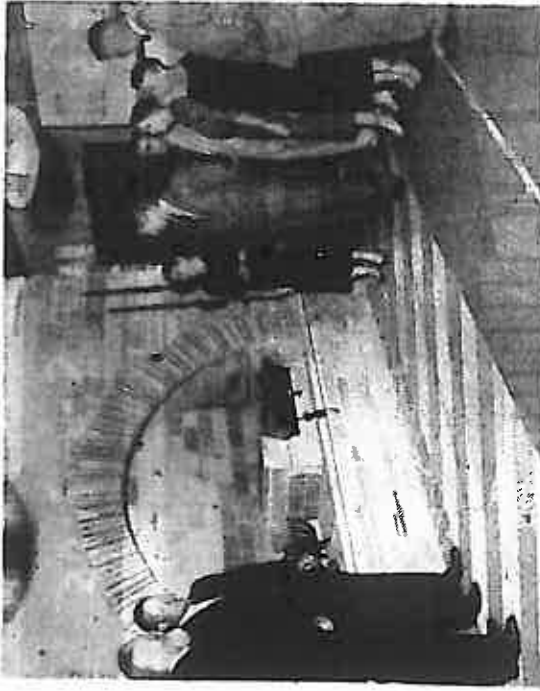
CENTRAL REALTY
Home—Income
121 Eastern—AT 4-1818

CLYTON ALBERTSON, RLTR.
Sub-Districts & Districts
1840 Olive Way—4812 24th N.W.

ALBERT BALCH, Community Bkr.
CRAWFORD & CONOVER, INC.
Seattle's Oldest R. E. Firm

ANDERBECK-HEIDRECKER
Queen Anne & Magnolia Homes
615 E. Queen Anne AT 3-4448

BLUME REALTY, REALTOR
Queen Anne & Magnolia Homes
1



BUILDER GREET'S PREVIEWERS: Arne Goedecke, second from left, stood by the side of a car...
Goedecke, developer of Eldorado Lane and one of many builders who are showing new homes in the annual Parade of Homes, is seen here with Mrs. Henry Schmitz, Lyle Goss, Bernard Reiter, Mrs. Raymond B. Allen, Mrs. Henry B. Owen and Dr. Edward Palmason.

Dark Furniture Gains in Favor

Do men prefer blondes or brunettes? In the furniture business, the answer is: dark wood. Darker wood tones are preferred over lighter ones, according to a survey by the National Home Builders' Association.

Model Homes Boost Sales

Under such a law, a mortgage made on real estate calls for the deed to the property to be placed in trust, with specific instructions for its delivery to the purchaser...

Deed-of-Trust Law Urged By Realty Board

A resolution adopted by the Seattle Real Estate Board recommends that the Legislature enact a deed-of-trust act...

Care Urged In Decorating Exterior Areas

Decorate your exterior living area as you do your interior, considering wall and ceiling interest, centers of attention, plus accents...

More Beauty—at Lower Cost ADEN PRE-CAST CONCRETE STEPS

Great Beauty Added to Your Home—Quickly Installed at Low Cost. Hollow One-Piece Unit Steps—With Or Without Railings—ADEN PRE-CAST STEP CO.



Builders' Head 'Lauds Purpose of Home Parade

"The Parade of Homes is the National Home Builders' Association's most vital activity... Association president, said yesterday.

Boat Firm Leases Tract On 15th Av. W.

After extensive alterations to the property, a large retail boat-sales-and-service outlet will be established at the northeast corner of 15th Avenue West and West Galer Street by Sundt & Evers Co.

Steel Sliced Quickly

The property was purchased in June through Broderick's Hardware Co. It consists of an electrical system for 58,000 square feet of land...

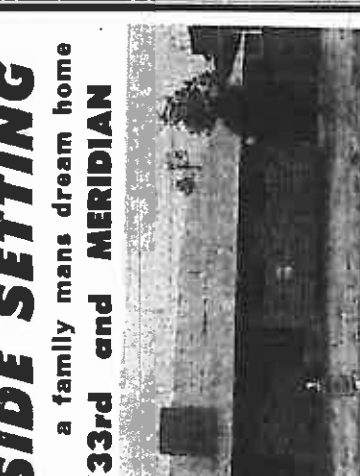


STANLEY GARAGE DOORS

Year after Year for the... "Better Homes and Garden" Home. SEE IT! AT 2816 16th S.E., Bellevue



PARKSIDE SETTING



Makes this spacious, three bedroom, full basement home one you will long remember. As you enter the spacious slate entry hall, you have a welcome feeling that this is home.

AT ONLY \$19,500



Lecture Series On Real-Estate Management

An evening lecture series on real-estate management will be held at the University of Washington... The series will feature an analysis of both the economic and social aspects of the industry.

Blue Lake SWIMMING POOLS

"The Lifetime Pool for the Time of Your Life" • PUBLIC & PRIVATE POOLS • REPAIRS • LANDON POOL EQUIPMENT

J. T. BROADFOOT CO.

EM. 4-3000 12714 ALBORA AVE. EM 4-3000. We specialize in replacement and remodeling of industrial and commercial heating systems.

FAMILY GROWING? MOVE TO TALBOT HILL HOMES
We've Rolled Out The RED CARPET to the YOUNG EXECUTIVE Model Home. 17420 SPRINGBROOK ROAD. Suburban living at its best. Over 1,300 sq. ft. of living area.

THE HARVARD - 17442 Springbrook Road
Over 1,100 sq. ft. Picture Windows unfold a Panoramic View, Living Room has Swedish Fireplace, 3 Bedrooms, Vanity Bath, Sliding Glass Doors to Outdoor Living Area. Excellent Storage Space, Utility Room built in garage. \$15,450

THE DARTMOUTH
17404 Springbrook Road. Picture Window View from living room, fireplace, sliding glass doors to patio, dining area, built-in breakfast room, large bath, 1,000 square feet, and a lot of house at \$15,450.

IRELAND HOMES, INC.
Alpine 5-0982. Turn south on Main St., then take Benson Highway. Keep right to turn on Springbrook Road. Follow the Signs to Talbot Hill Homes.

THE TILLAMOOK
940 sq. ft. of LOVELY LIVING \$11,700 Plus Lot. A Beautiful Reverse Floor Plan. 3 Bedrooms, 2 Eating Spaces, Breakfast Room, Swedish Fireplace, Vanity Bath, 2 Car Carport.

THE SEQUOIA
\$1,450 Down \$14,995. 4 Bedrooms (1 Unfinished), Huge Family Room, Fireplace—Patio, 2 Car Carport. 9410 37th Ave. So.

GOODWIN HOMES, Inc.
New Homes—Remodeling 9450 RENTON AVE. PA. 3-4151. 4 Bedrooms, 3 Bathrooms, 2 Eating Spaces, Breakfast Room, Swedish Fireplace, Vanity Bath, 2 Car Carport.

Care Urged In Decorating Exterior Areas

Decorate your exterior living area as you do your interior, considering wall and ceiling interest, centers of attention, plus accents.

More Beauty—at Lower Cost ADEN PRE-CAST CONCRETE STEPS

Great Beauty Added to Your Home—Quickly Installed at Low Cost. Hollow One-Piece Unit Steps—With Or Without Railings—ADEN PRE-CAST STEP CO.

Boat Firm Leases Tract On 15th Av. W.

After extensive alterations to the property, a large retail boat-sales-and-service outlet will be established at the northeast corner of 15th Avenue West and West Galer Street by Sundt & Evers Co.

Steel Sliced Quickly

The property was purchased in June through Broderick's Hardware Co. It consists of an electrical system for 58,000 square feet of land...

FAMILY GROWING? MOVE TO TALBOT HILL HOMES
We've Rolled Out The RED CARPET to the YOUNG EXECUTIVE Model Home. 17420 SPRINGBROOK ROAD. Suburban living at its best. Over 1,300 sq. ft. of living area.

THE HARVARD - 17442 Springbrook Road
Over 1,100 sq. ft. Picture Windows unfold a Panoramic View, Living Room has Swedish Fireplace, 3 Bedrooms, Vanity Bath, Sliding Glass Doors to Outdoor Living Area. Excellent Storage Space, Utility Room built in garage. \$15,450

THE DARTMOUTH
17404 Springbrook Road. Picture Window View from living room, fireplace, sliding glass doors to patio, dining area, built-in breakfast room, large bath, 1,000 square feet, and a lot of house at \$15,450.

IRELAND HOMES, INC.
Alpine 5-0982. Turn south on Main St., then take Benson Highway. Keep right to turn on Springbrook Road. Follow the Signs to Talbot Hill Homes.

THE TILLAMOOK
940 sq. ft. of LOVELY LIVING \$11,700 Plus Lot. A Beautiful Reverse Floor Plan. 3 Bedrooms, 2 Eating Spaces, Breakfast Room, Swedish Fireplace, Vanity Bath, 2 Car Carport.

THE SEQUOIA
\$1,450 Down \$14,995. 4 Bedrooms (1 Unfinished), Huge Family Room, Fireplace—Patio, 2 Car Carport. 9410 37th Ave. So.

GOODWIN HOMES, Inc.
New Homes—Remodeling 9450 RENTON AVE. PA. 3-4151. 4 Bedrooms, 3 Bathrooms, 2 Eating Spaces, Breakfast Room, Swedish Fireplace, Vanity Bath, 2 Car Carport.

