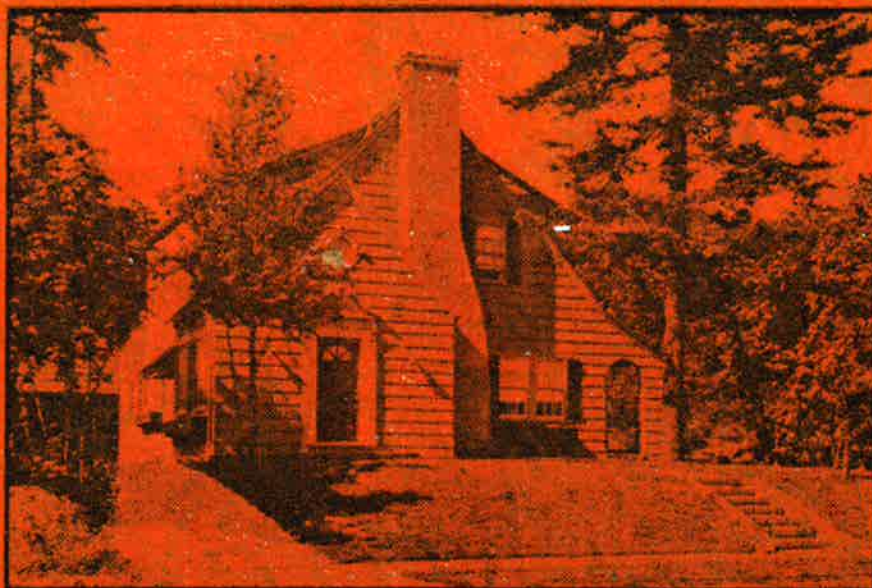


Portland Homes



1 9 2 6



Universal Plan Service

PORTLAND, OREGON

Portland Homes

SECOND EDITION

1926

Illustrating Floor Plans and Exterior Views of Modern Homes.

PRICE \$1.50

DESIGNED AND ARRANGED BY HARRY B. BOLAND

Universal Plan Service

RAILWAY EXCHANGE BUILDING

PORTLAND, OREGON

.....FOREWORD.....

VISUALIZING the city of Portland as the future great metropolis of the growing Northwest and prompted by the many inquiries and steady demand for home designs by citizens of Portland and its environs as well as from residents from afar we are presenting after careful preparation our second edition of "PORTLAND HOMES" in the hope of contributing a measure of service to our own community and to the thousands of people coming to Oregon each year to make their home among us.

IN the compilation of this work generous cooperation has been given by a group of business firms of Portland directly interested in home building and we invite the attention of our readers to their attractive advertisements interspersed throughout these pages. We are also indebted to the Oregon Daily Journal for its assistance in this publication.

THE book contains 92 plans representing the latest and best in modern homes and has been prepared with a view of meeting the requirements of people of moderate financial means as well as those in affluent circumstances.

On the following page will be found some instructions and suggestions that should prove of aid to prospective home builders and to those concerned with the construction of other classes of buildings.

.....Instructions.....

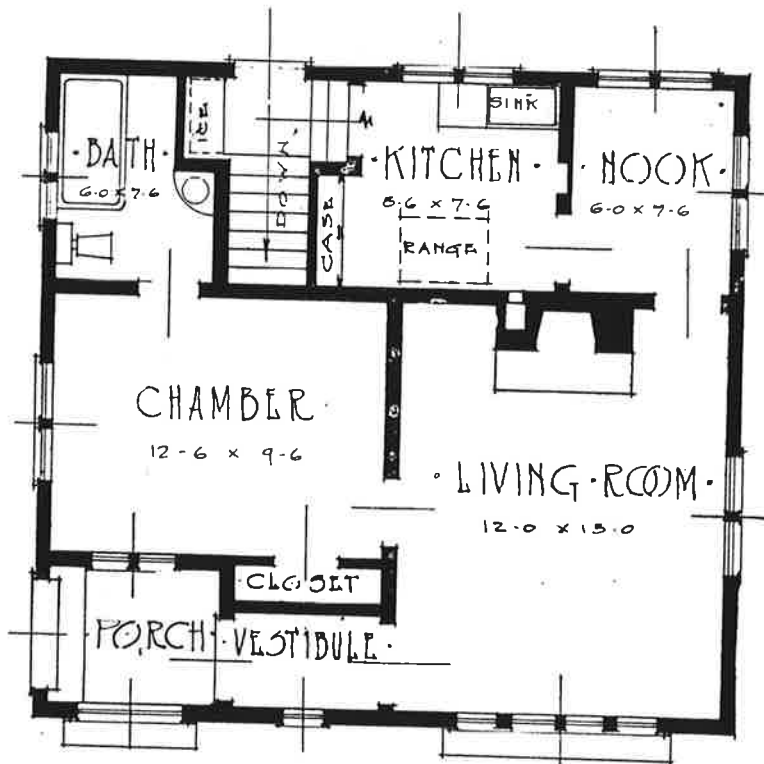
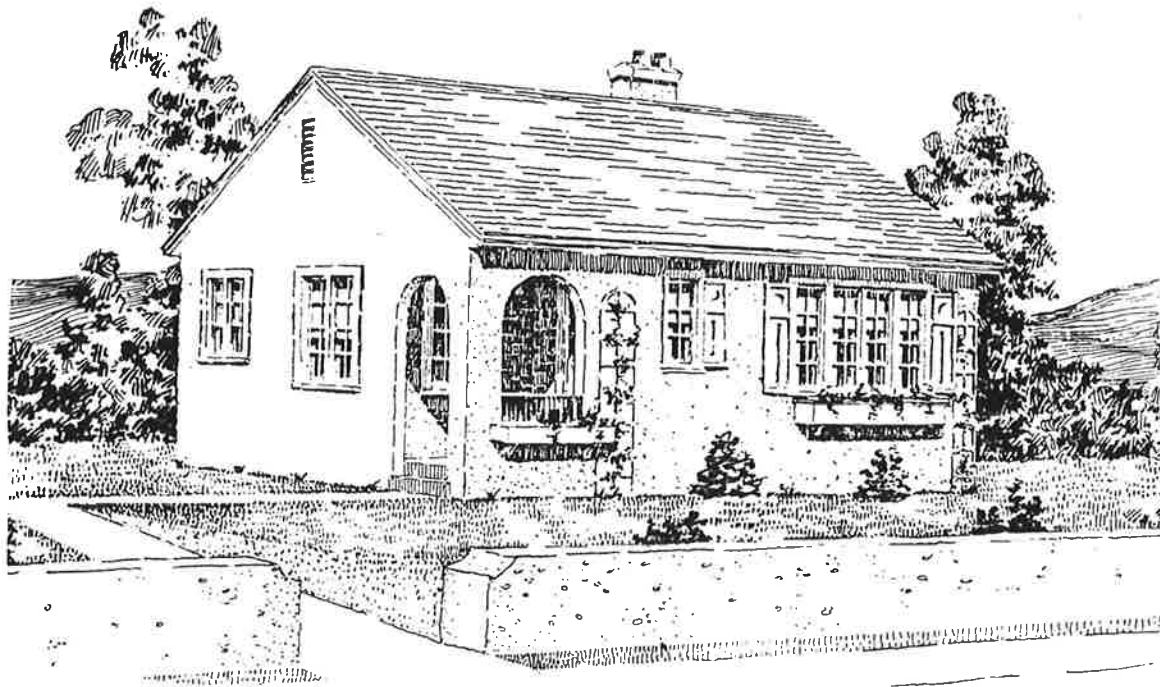
If in looking over the various plans in the book you fail to find one conforming to the type of home you want we are at all times ready to prepare sketches on short notice in accordance with your ideas and wishes and for which a nominal charge will be made. If you place an order for the plan it will cost you nothing for the sketch as we shall deduct it from the price of the plans. In connection with this matter we would suggest that you send us a rough outline of floor plan and description of design you desire and whether the building is for home or commercial purposes we can comply with your requests.

Two sets of Blue Prints of any plan shown in the book can be obtained for \$15.00 and the cost of an additional set if ordered at the same time will be \$1.00.

Our work is not confined to residential plans alone, but we are also equipped to furnish designs for any kind of business structure.

HARRY B. BOLAND.

UNIVERSAL PLAN SERVICE
RAILWAY EXCHANGE BUILDING
PORTLAND, OREGON

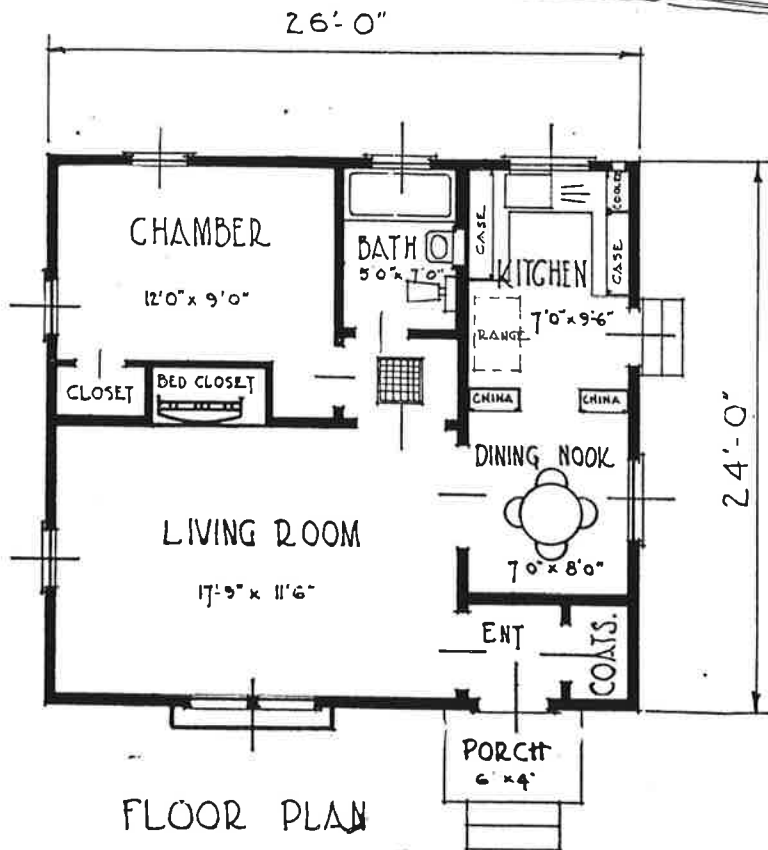
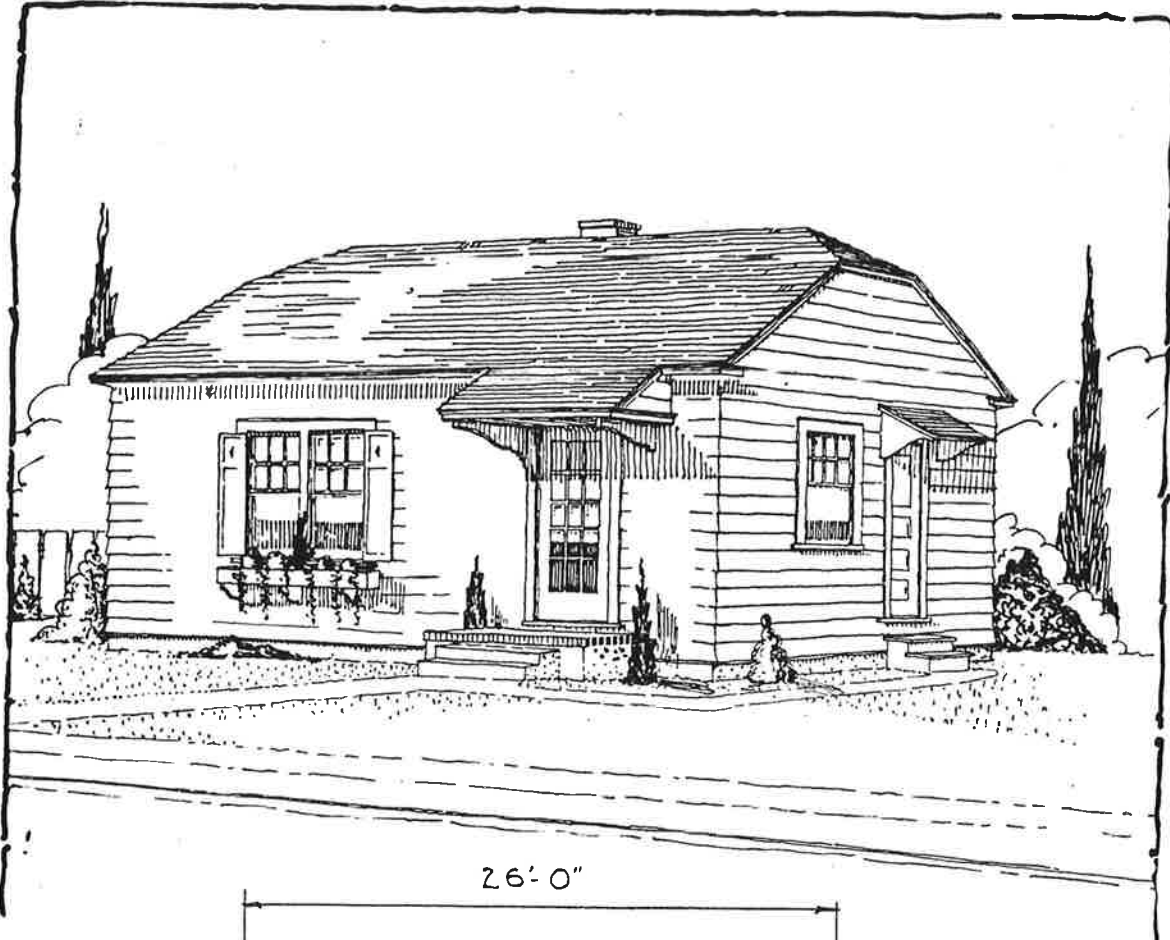


- FLOOR PLAN -
- PLAN NO. 307 -

Plan No. 307

Dimensions 26-0x24-0

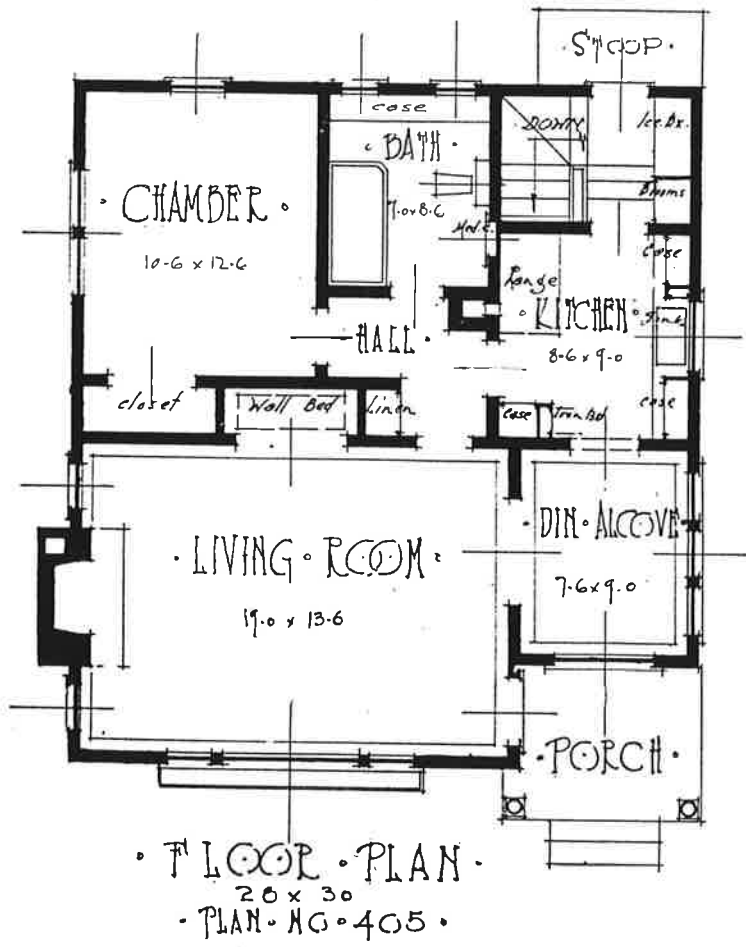
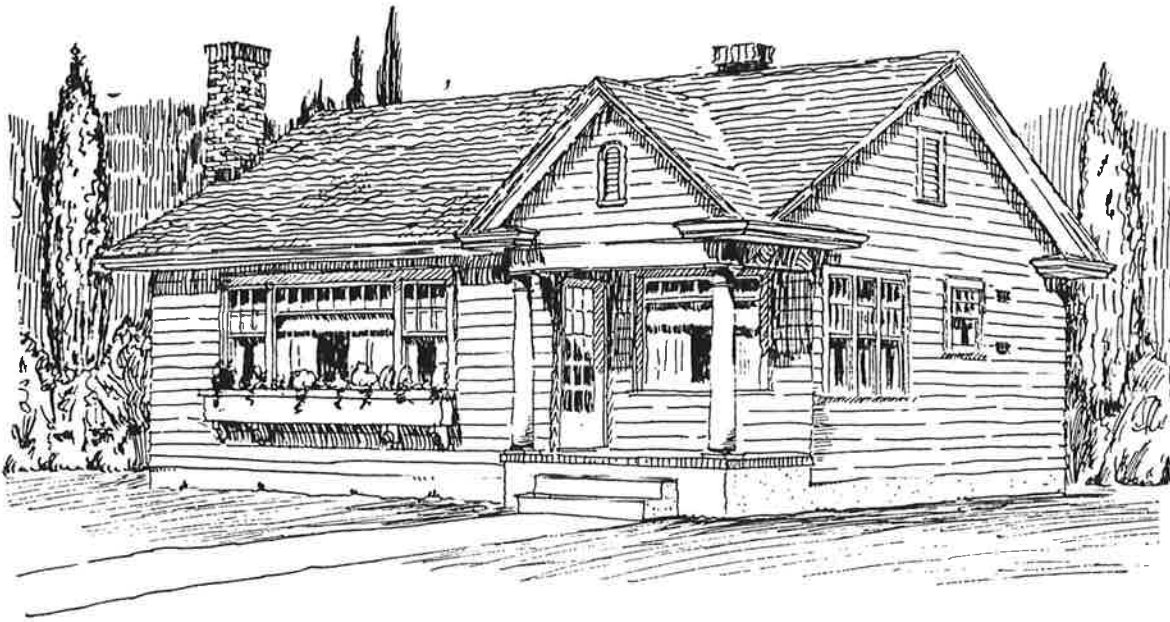
Floor area 624 sq. feet.



Plan No. 314

Dimensions 26-0x24-0

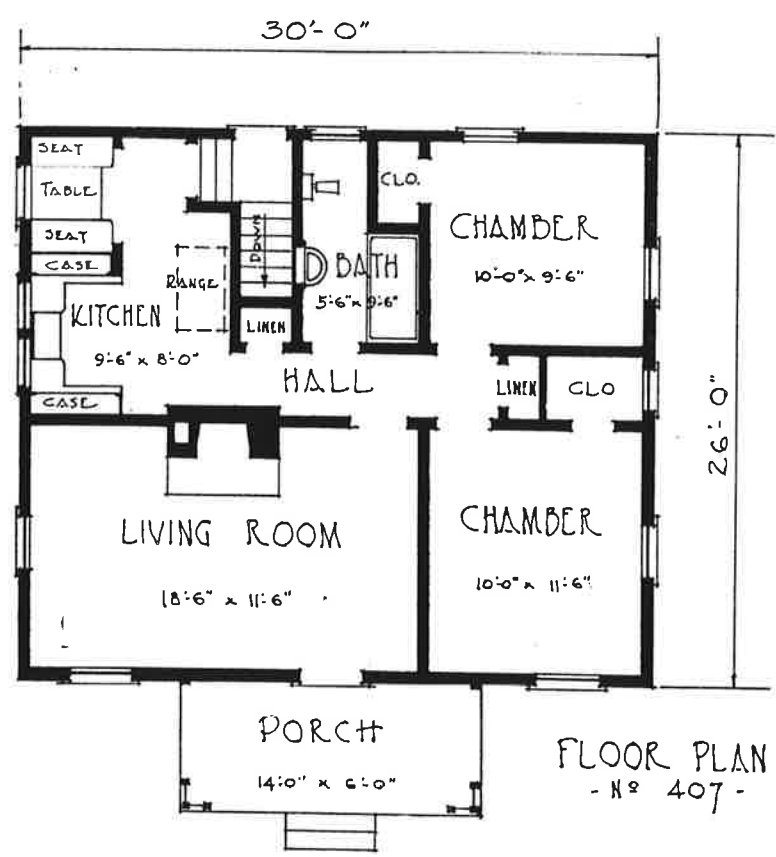
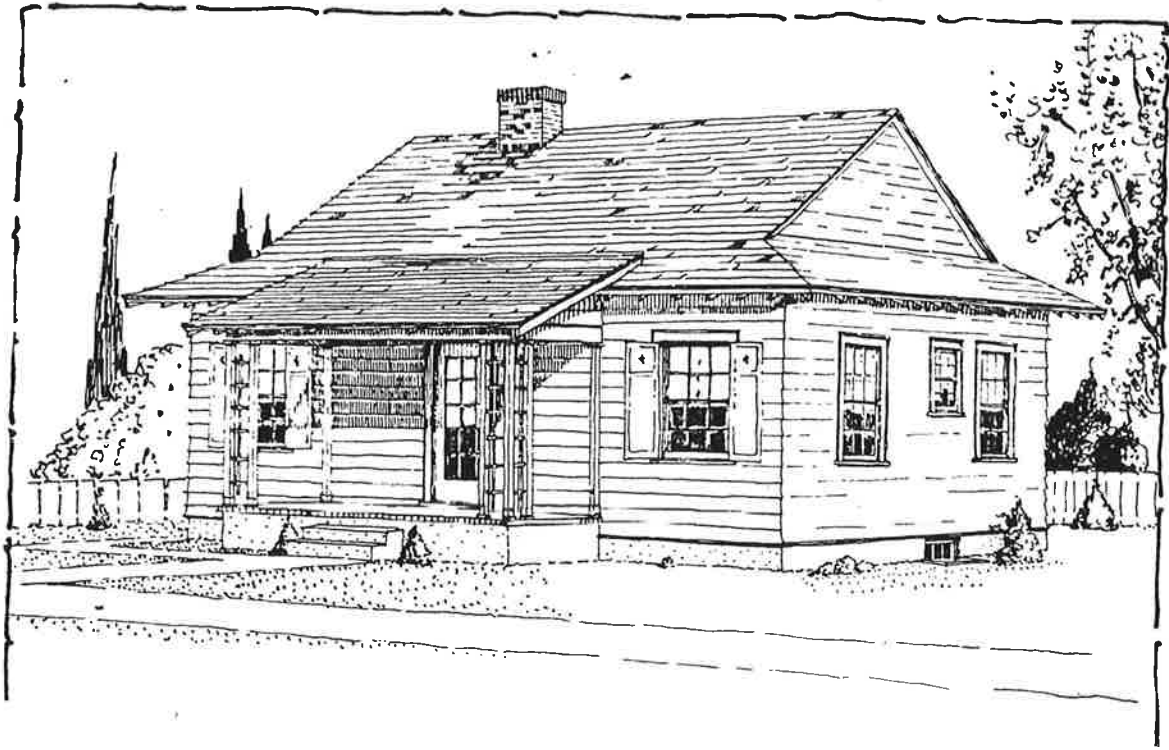
Floor area 624 sq. feet.



Plan No. 405

Dimensions 28-0x30-0

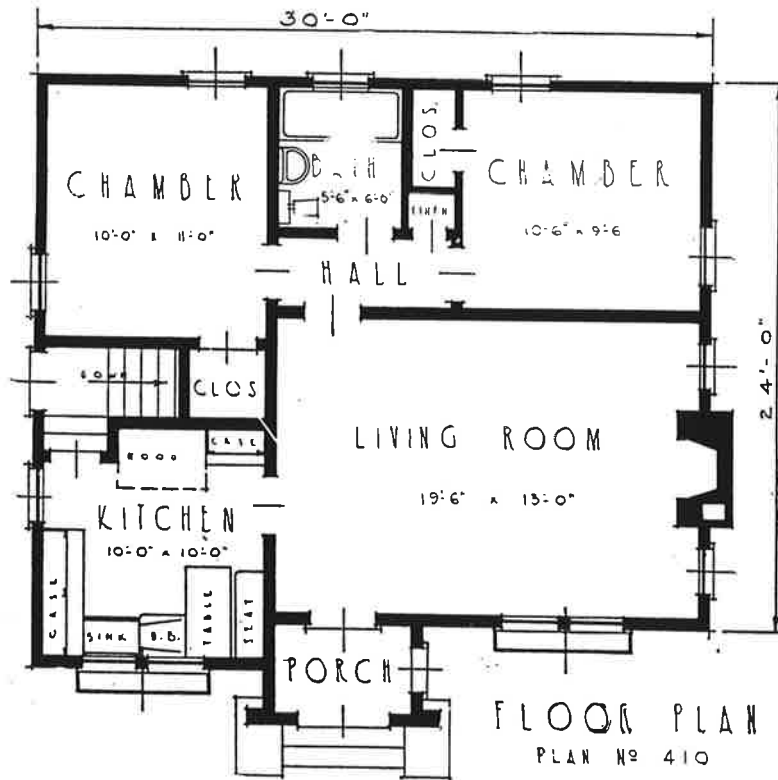
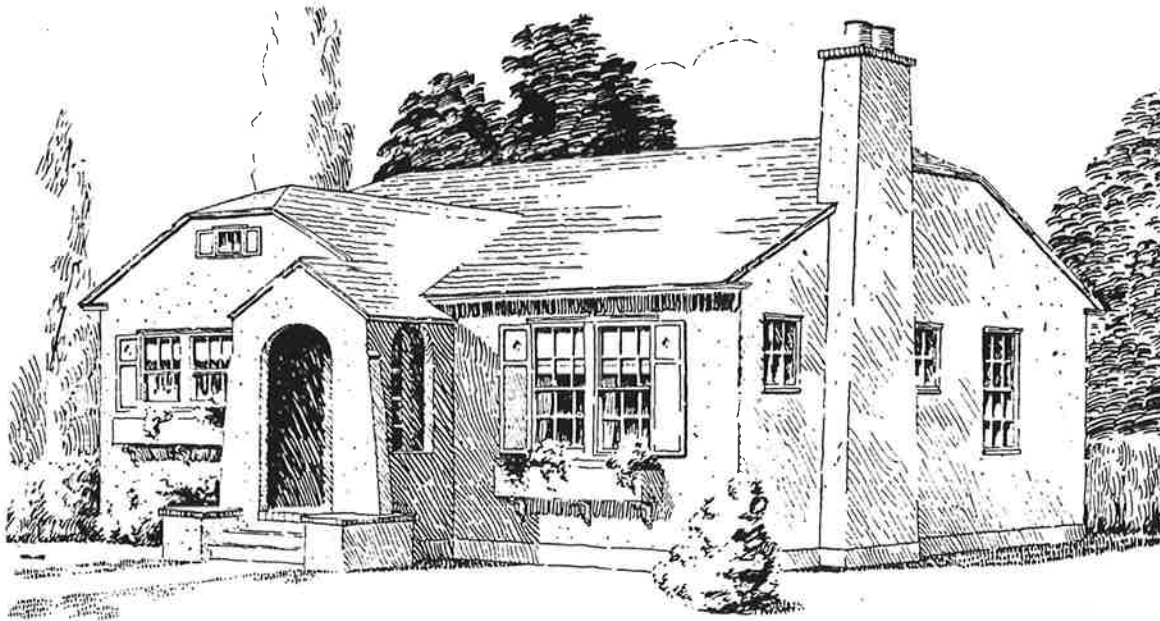
Floor area 840 sq. feet.



Plan No. 407

Dimensions 30-0x26-0

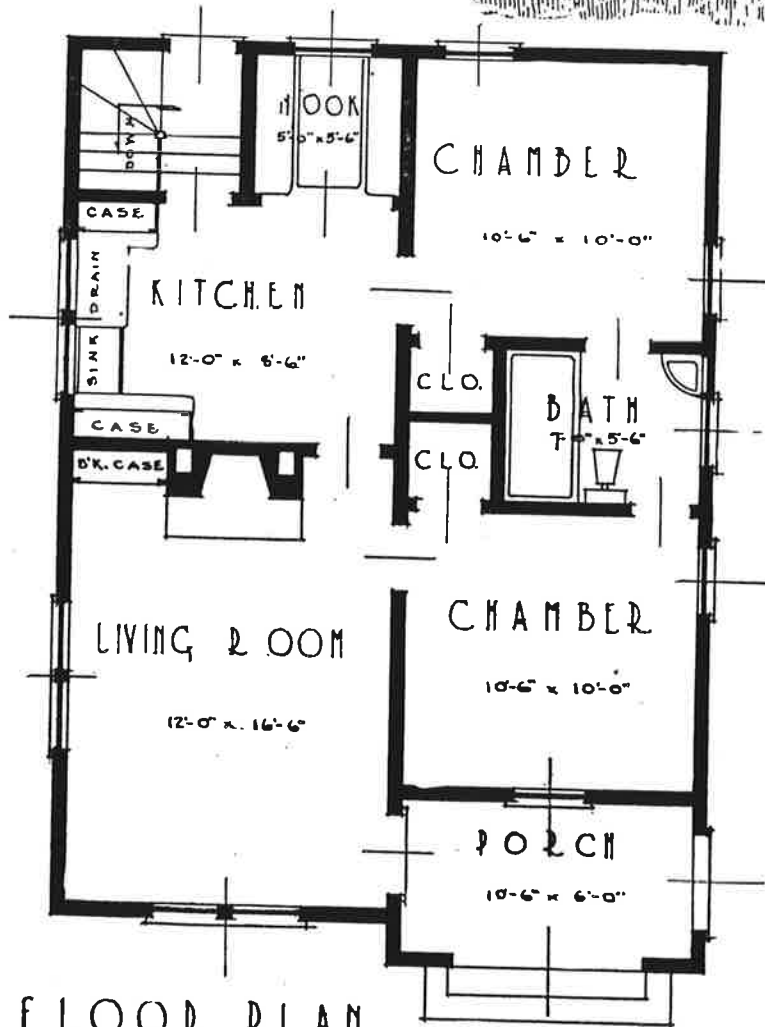
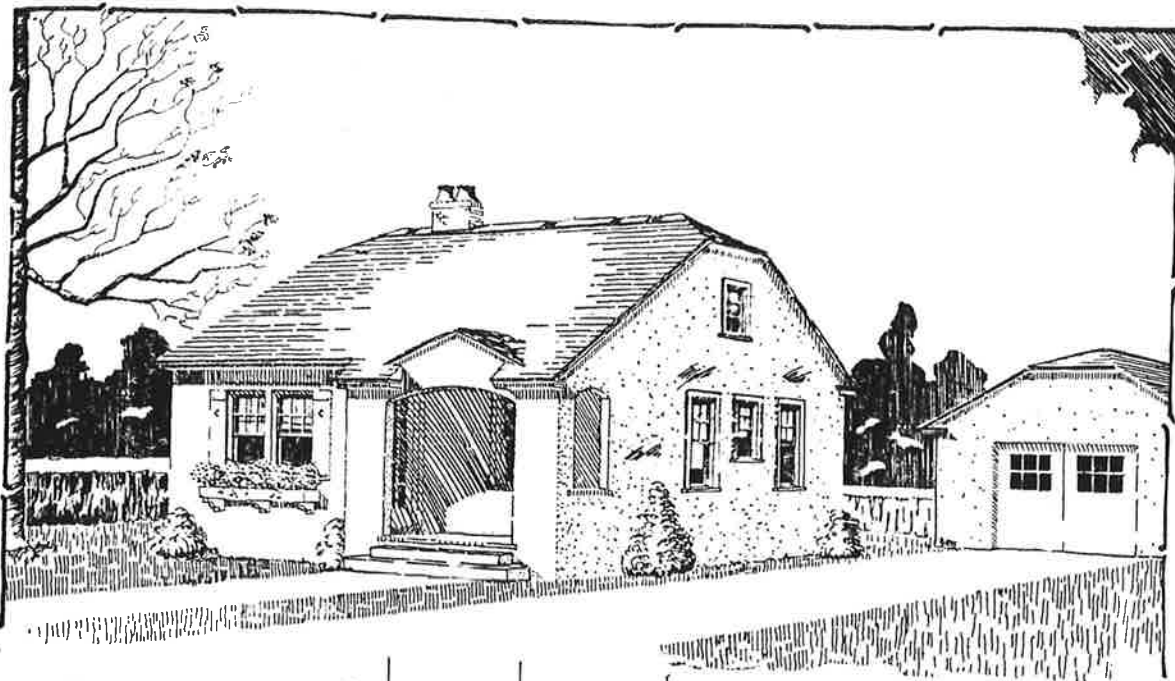
Floor area 780 sq. feet.



Plan No. 410

Dimensions 30-0x26-0

Floor area 740 sq. feet.



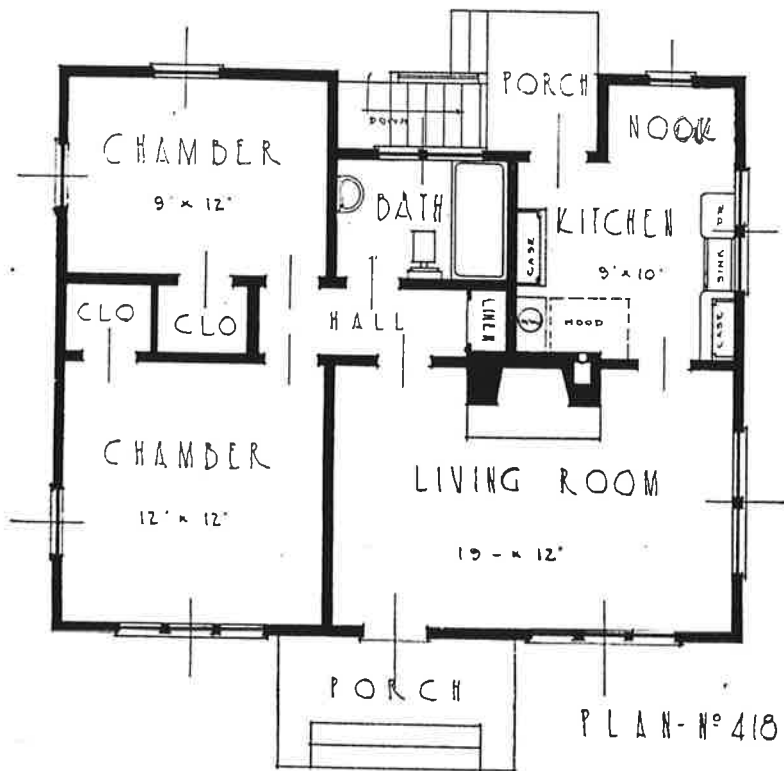
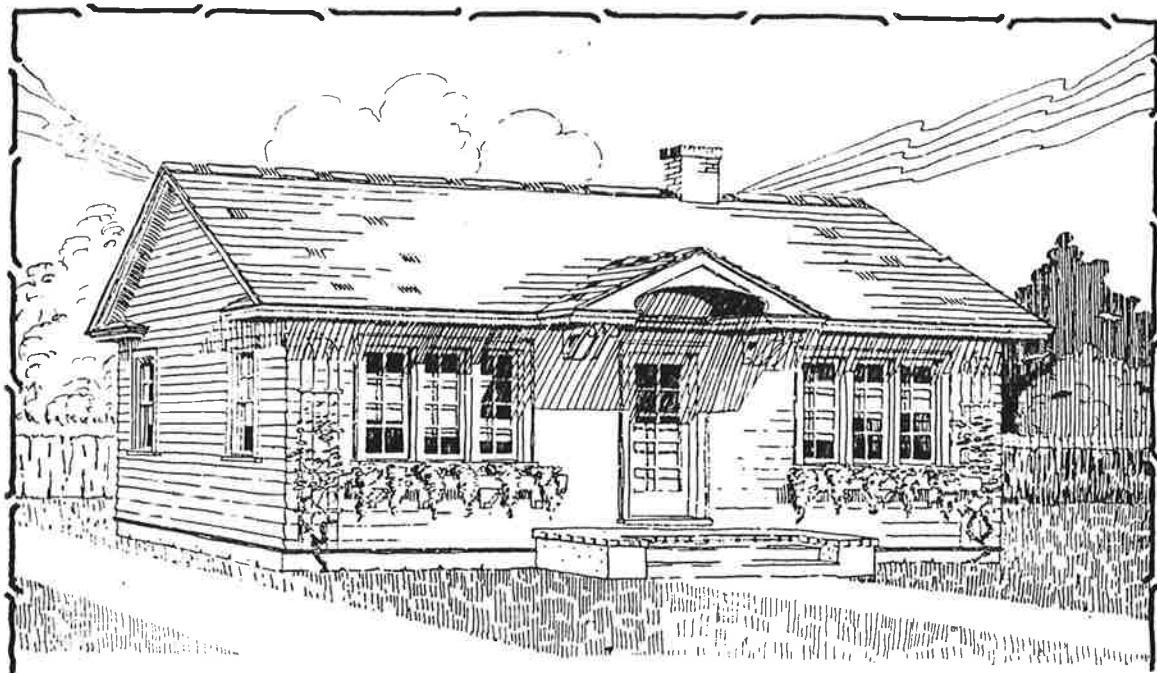
FLOOR PLAN

HOUSE PLAN NO. 411

Plan No. 411

Dimensions 24-0x32-0

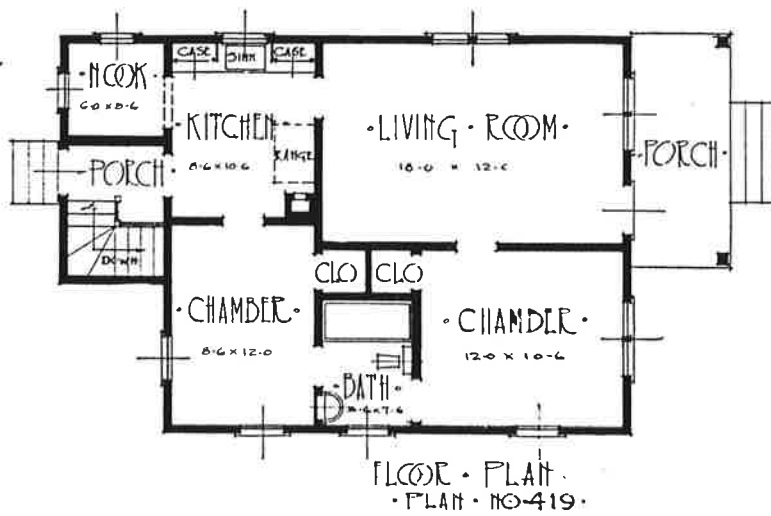
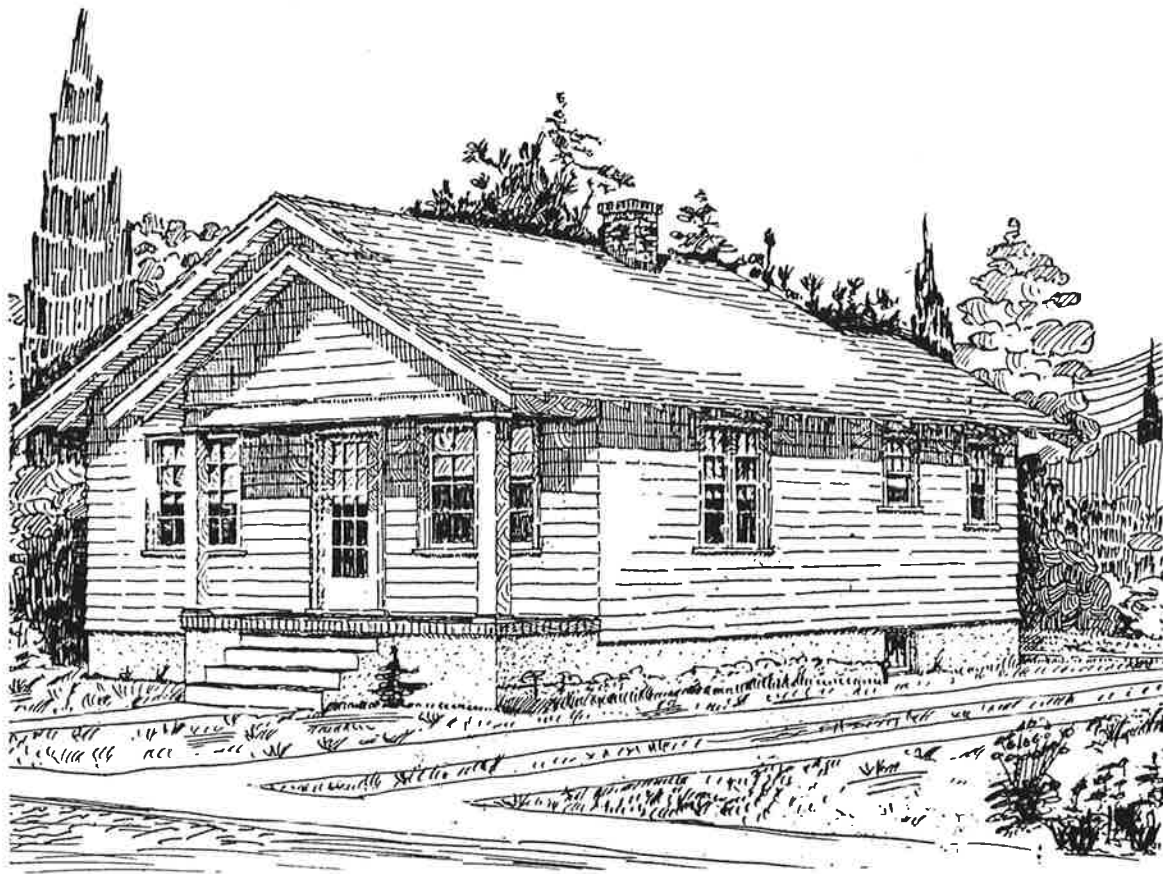
Floor area 790 sq. feet.



Plan No. 418

Dimensions 32-0x26-0

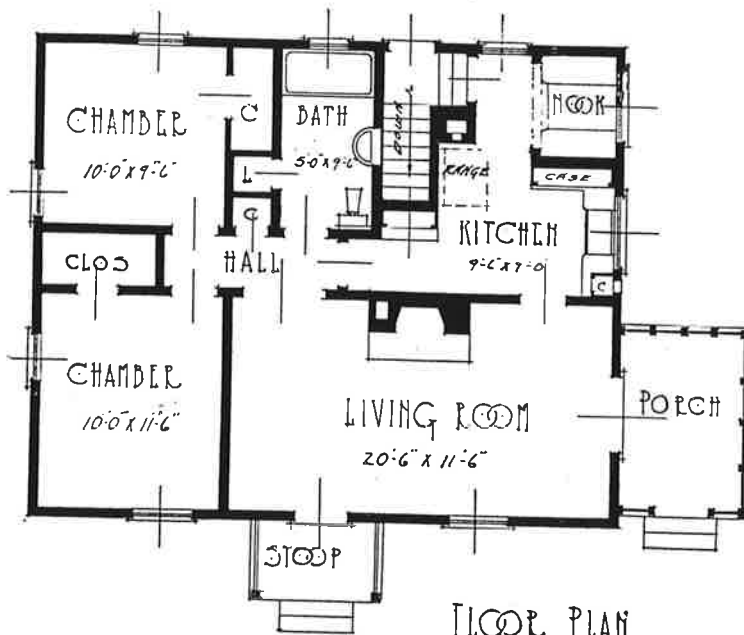
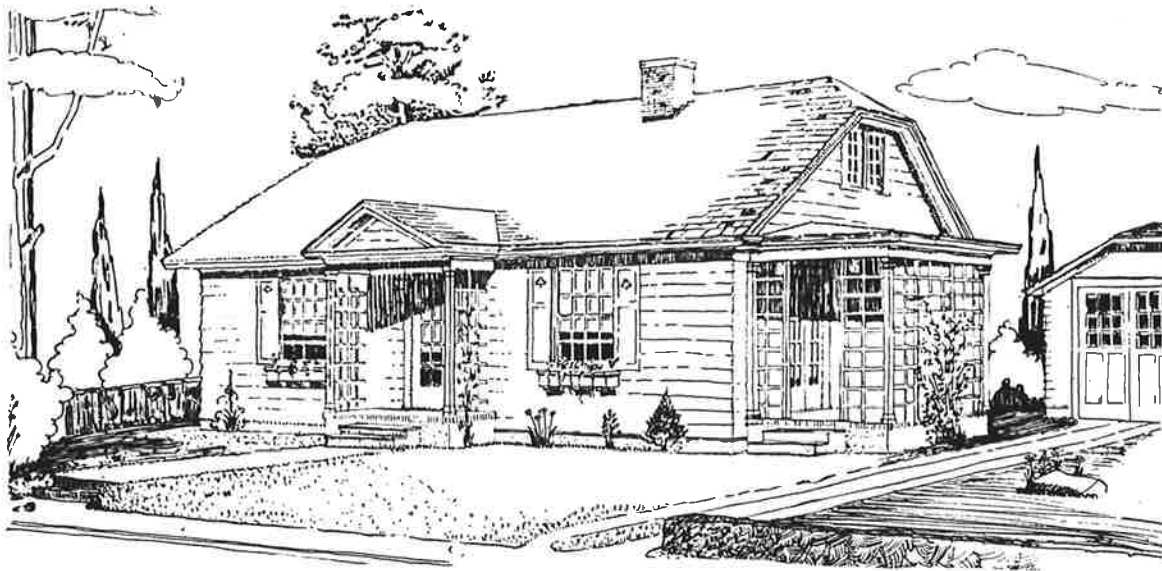
Floor area 832 sq. feet.



Plan No. 419

Dimensions 24-0x28-0

Floor area 770 sq. feet.

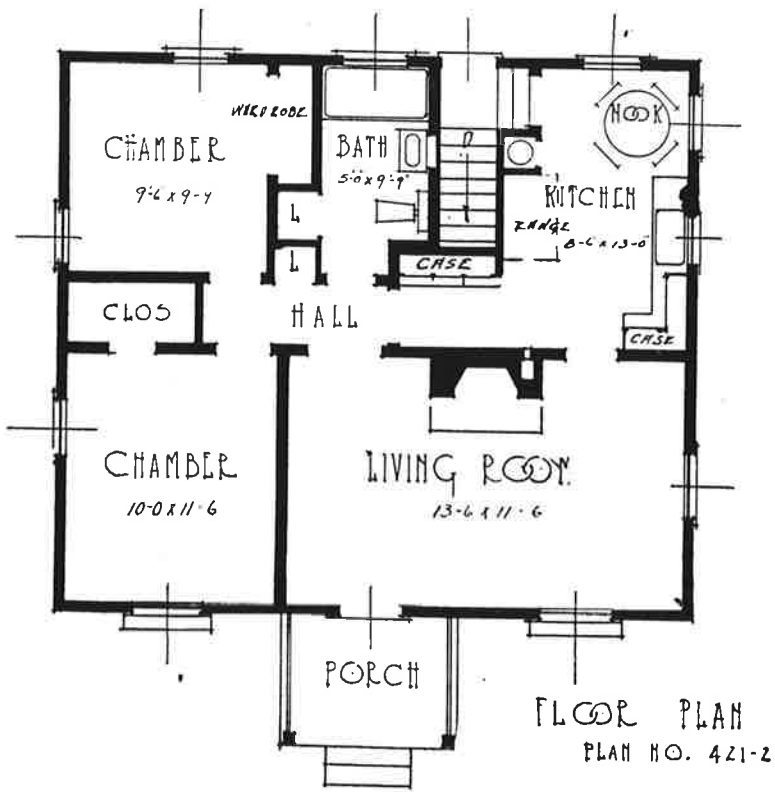


FLOOR PLAN
PLAN NO. 421

Plan No. 421

Dimensions 32-0x26-0

Floor area 832 sq. feet.

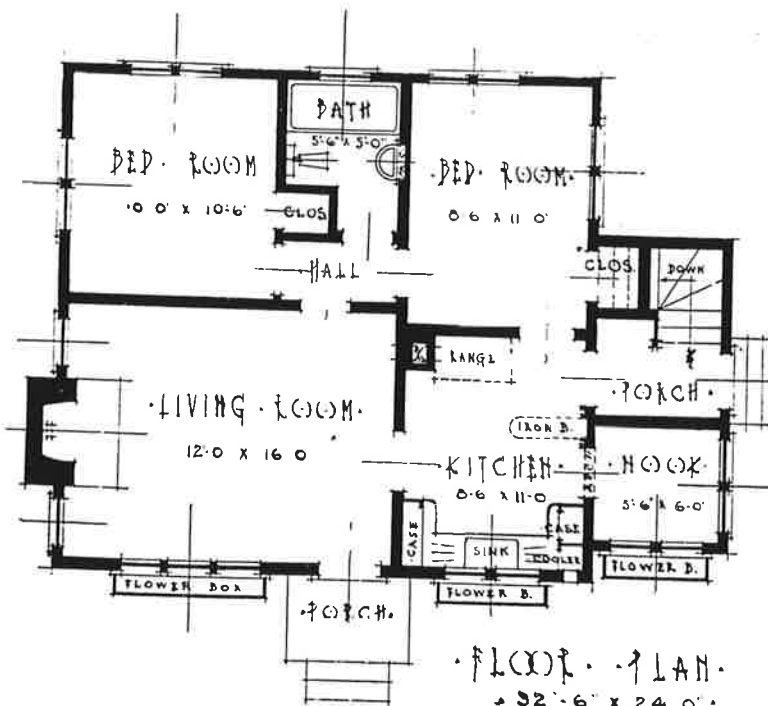
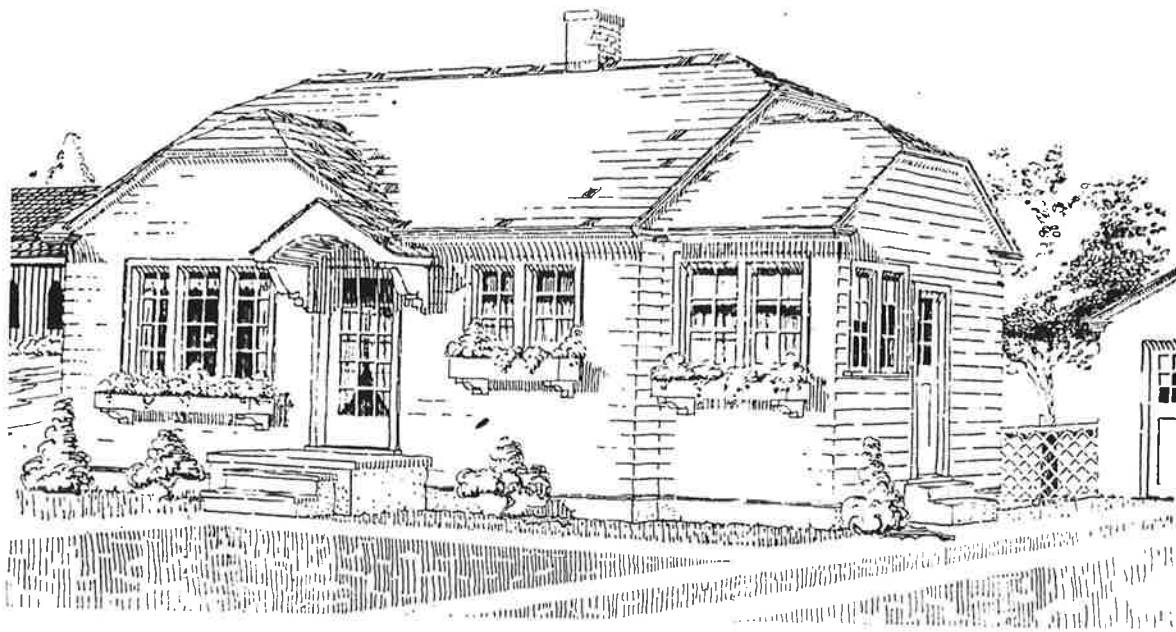


FLOOR PLAN
PLAN NO. 421-2

Plan No. 421-2

Dimensions 30 0x26-0

Floor area 780 sq. feet.

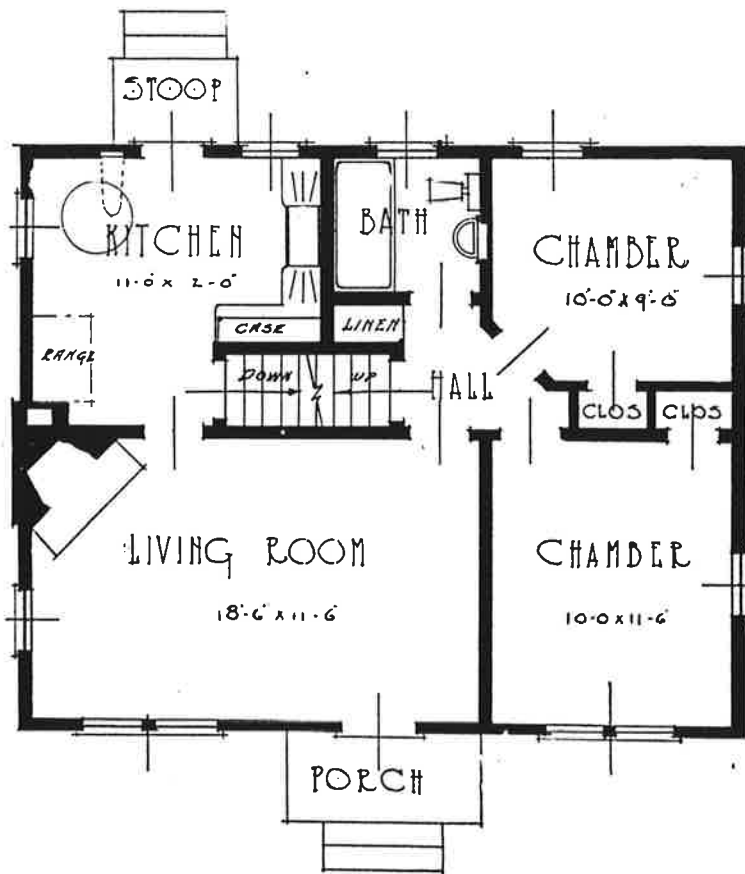
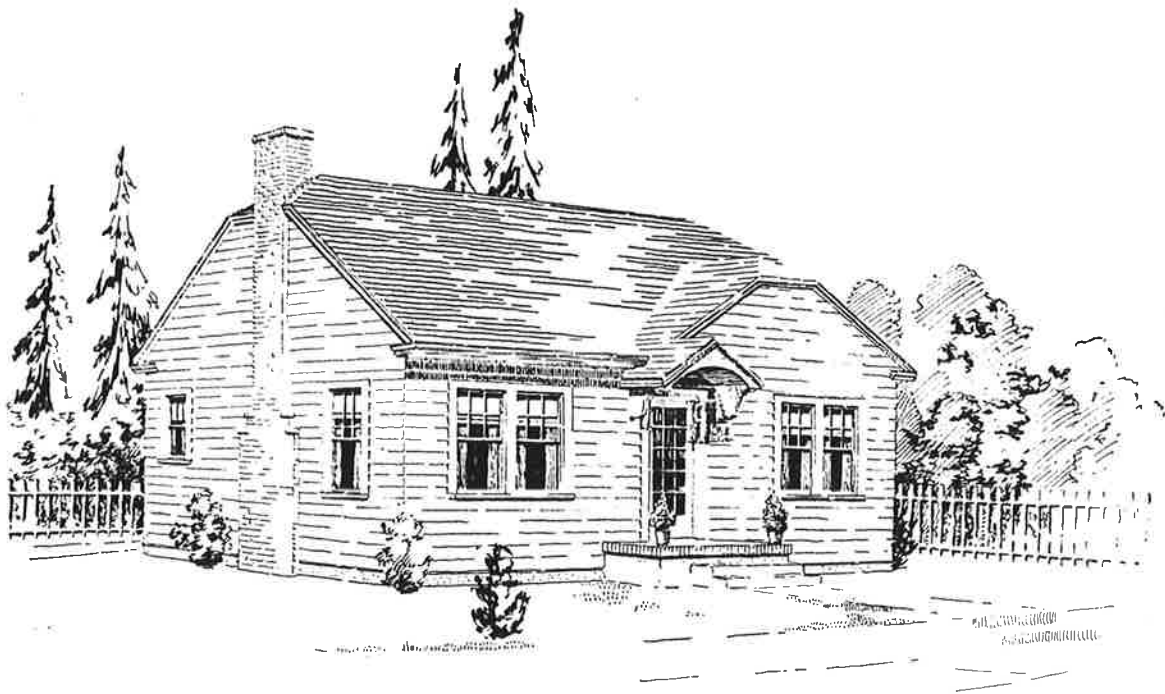


FLOOR PLAN
 32'-6" x 24'-0"
 PLAN NO. 423

Plan No. 423

Dimensions 32-6x24-0

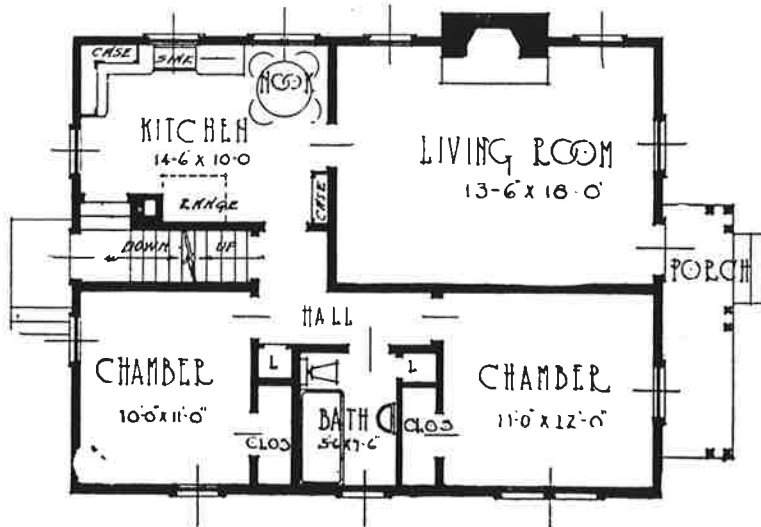
Floor area 722 sq. feet.



Plan No. 424

Dimensions 30-0x24-0

Floor area 720 sq. feet.

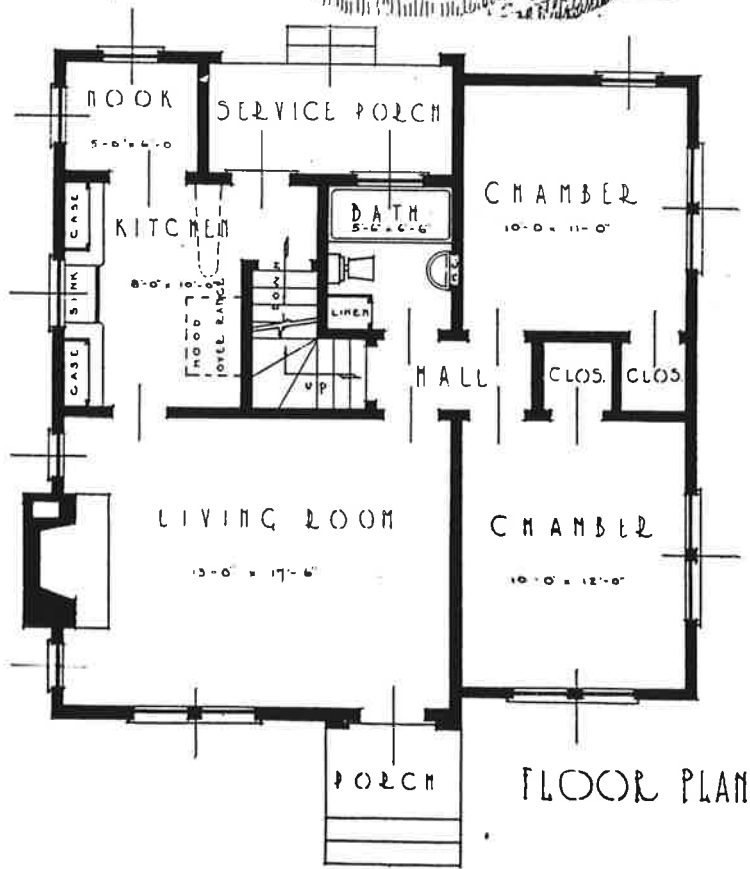
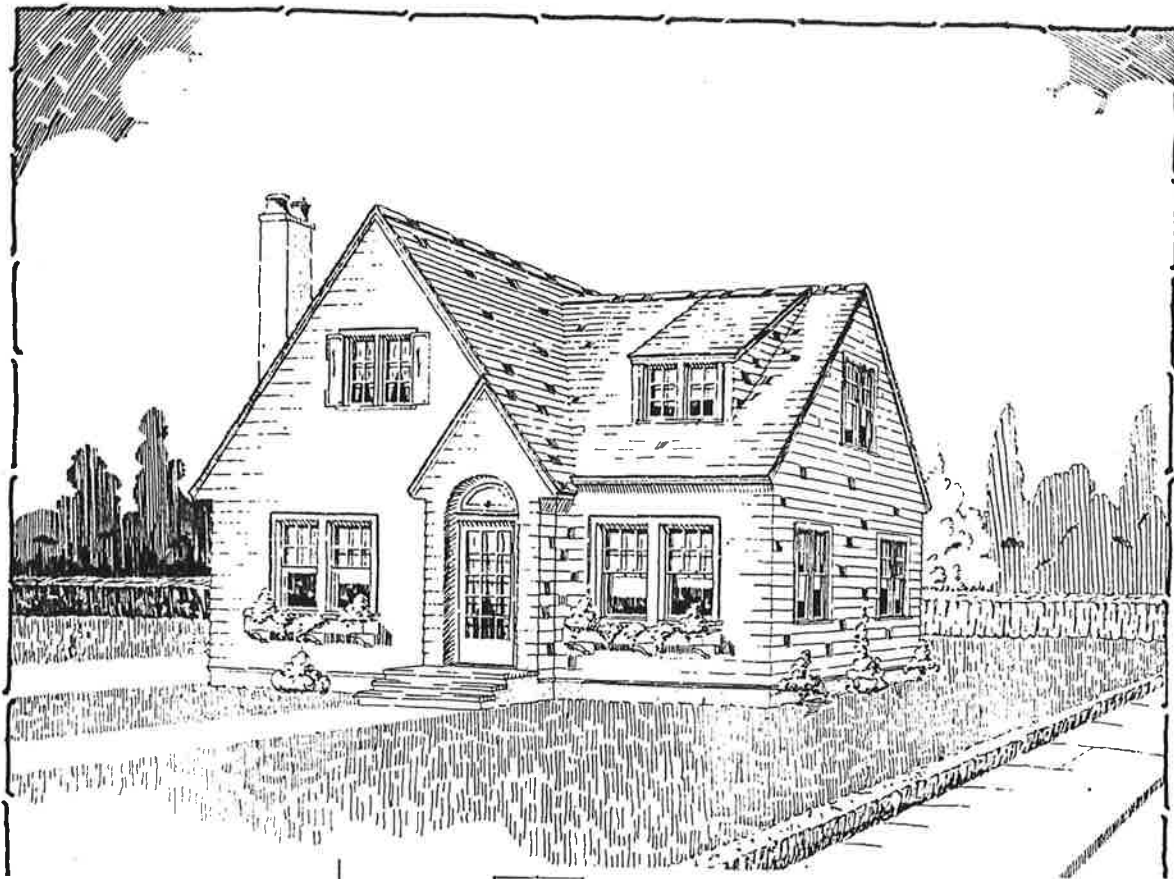


FLOOR PLAN
PLAN NO. 425

Plan No. 425

Dimensions 34-0x26-0

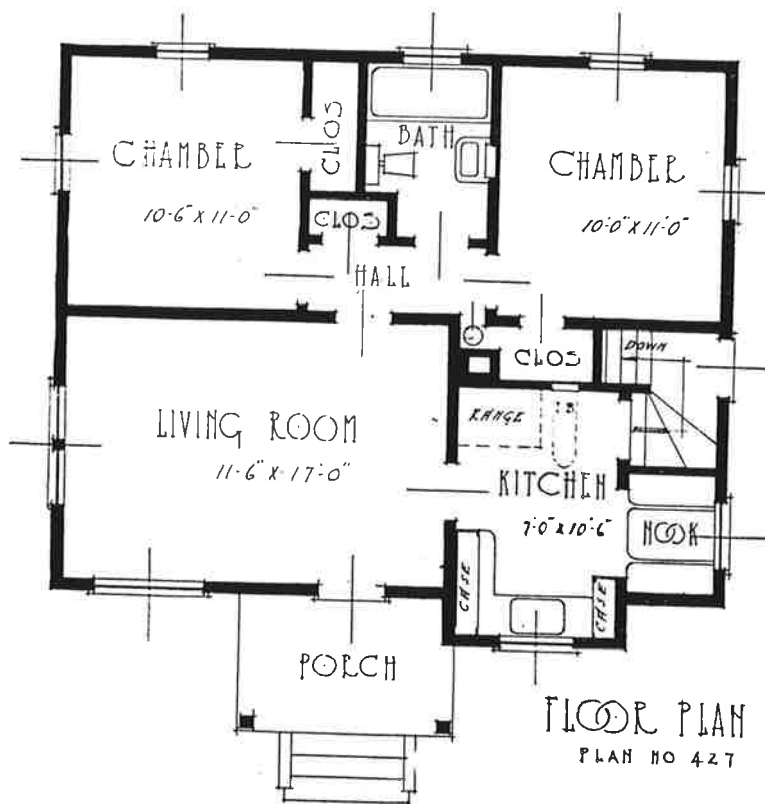
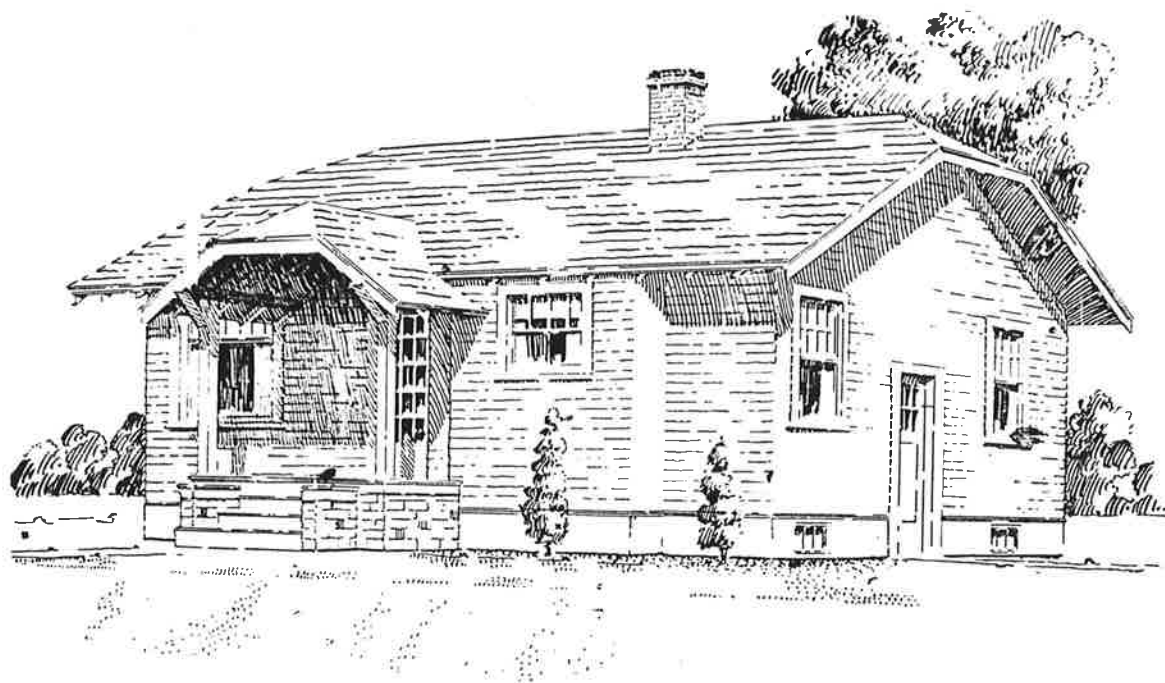
Floor area 884 sq. feet.



Plan No. 426

Dimensions 29-0x30-0

Floor area 850 sq. feet.

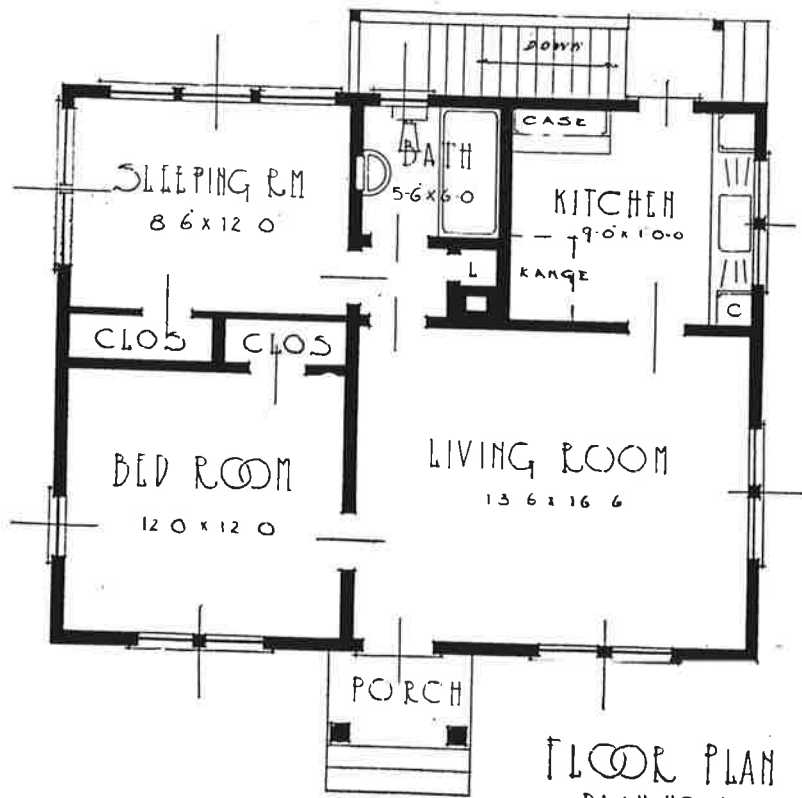
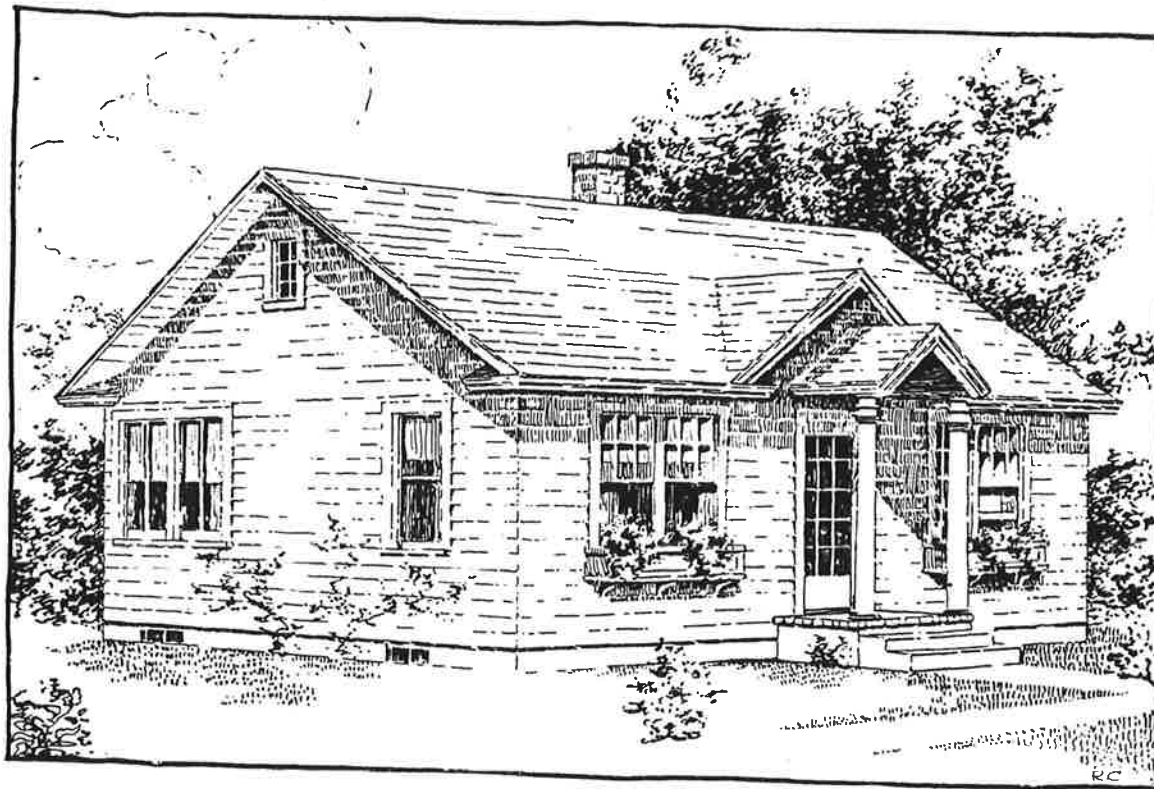


FLOOR PLAN
PLAN NO 427

Plan No. 427

Dimensions 30-0x24-0

Floor area 720 sq. feet.

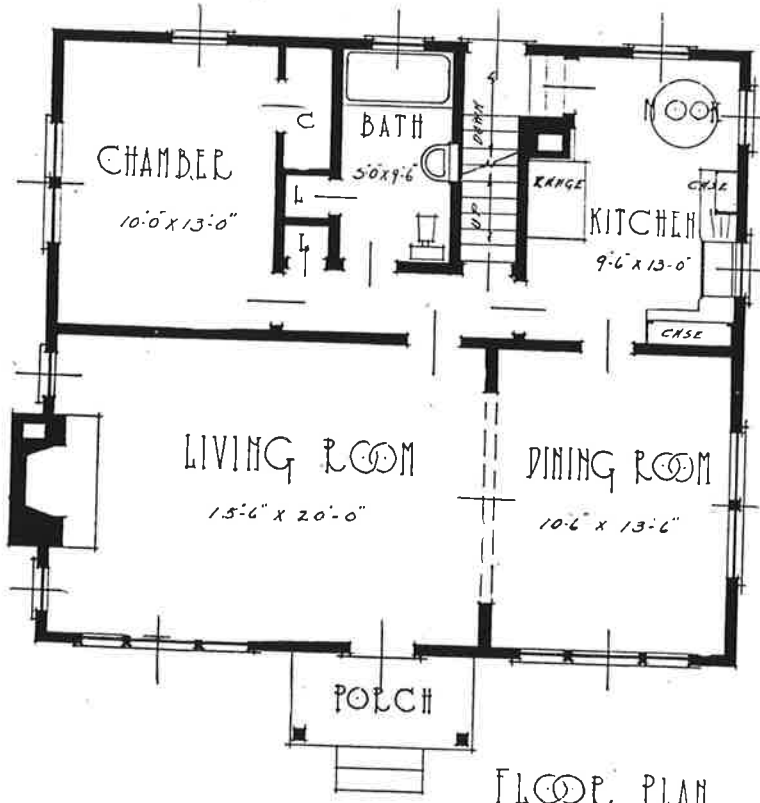
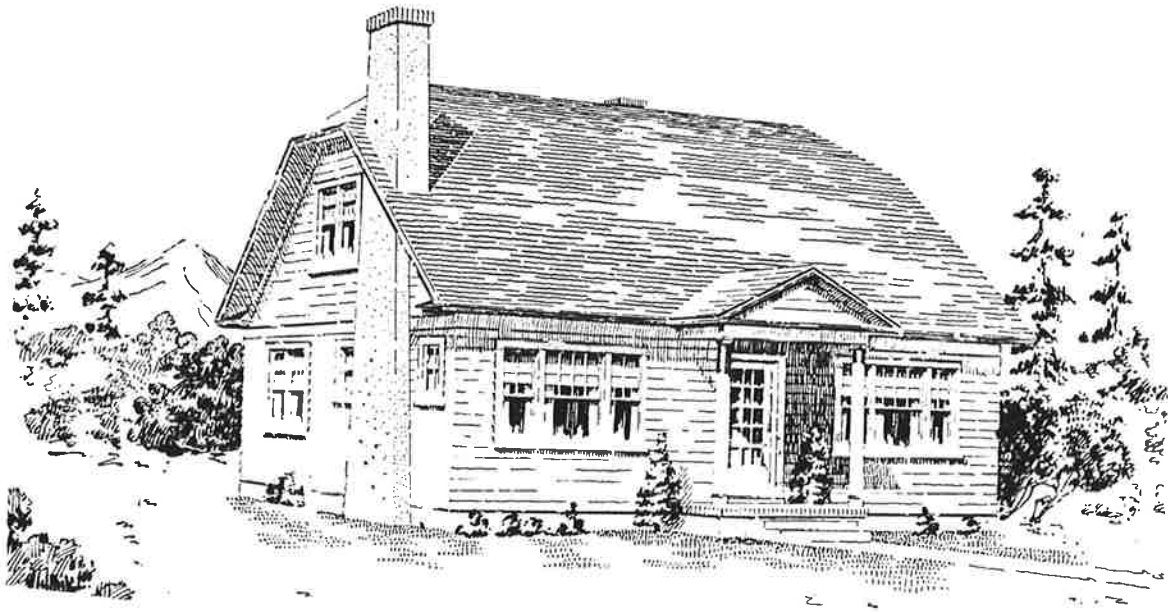


FLOOR PLAN
PLAN NO. 428

Plan No. 428

Dimensions 30-0x24-0

Floor area 720 sq. feet.

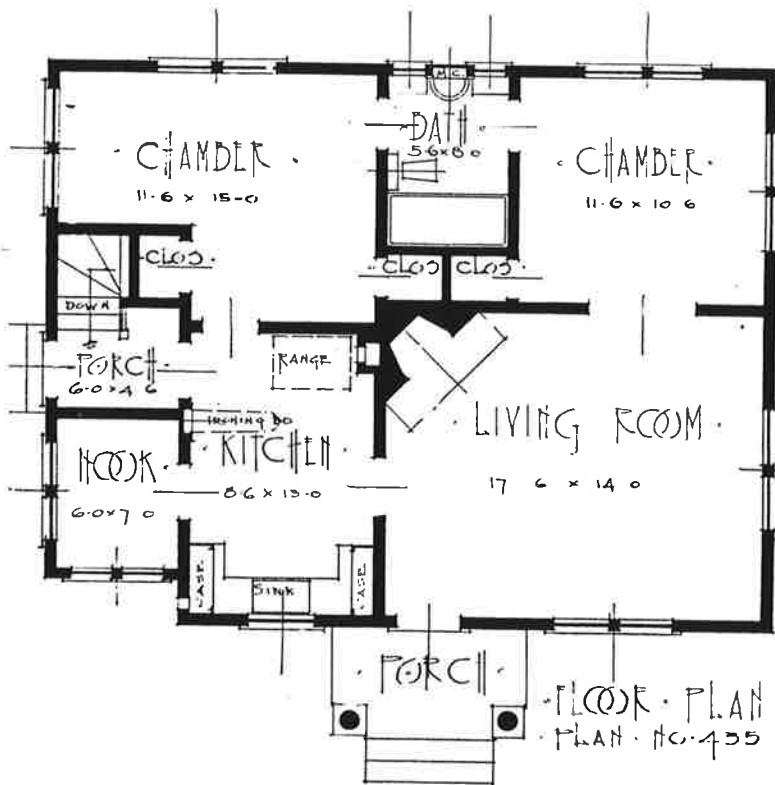
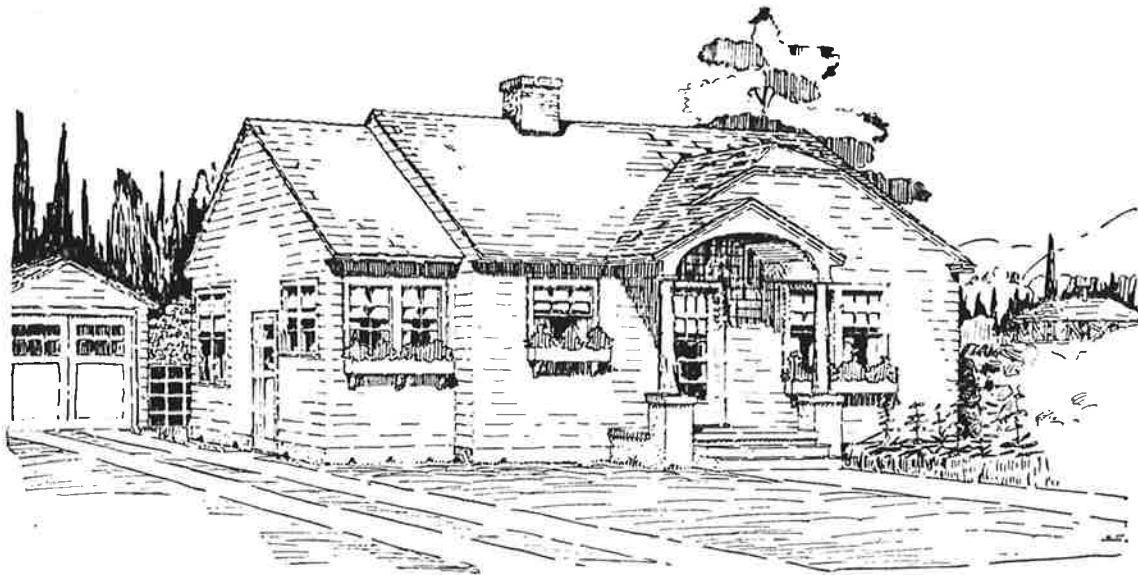


FLOOR PLAN
PLAN NO. 430

Plan No. 430

Dimensions 32-0x28-0

Floor area 896 sq. feet.



Plan No. 435

Dimensions 34-0x26-0

Floor area 871 sq. feet.

In building a house insist on Products of the

COLONIAL WORKS

Sole Makers of

BRONZITE

The Intensified Permanent Green

A Mineral Green Producing

A Permanent Green Roof.

DUNCOTE

Saves One Coat

The safeguard against flat spots in the wall finish

TIZLITE

The Master Painters White

A Titanium Product with 25% Greater Covering Capacity than Ordinary
Standard White Paint.

VEL-VE-TA Flat & Enamel

A Long Oil Enamel

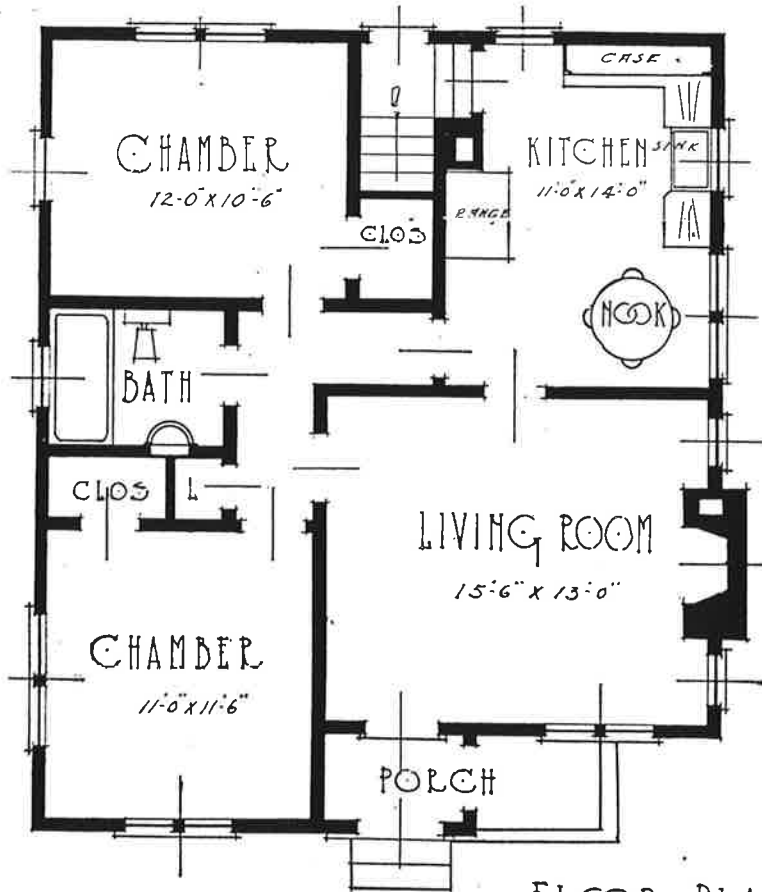
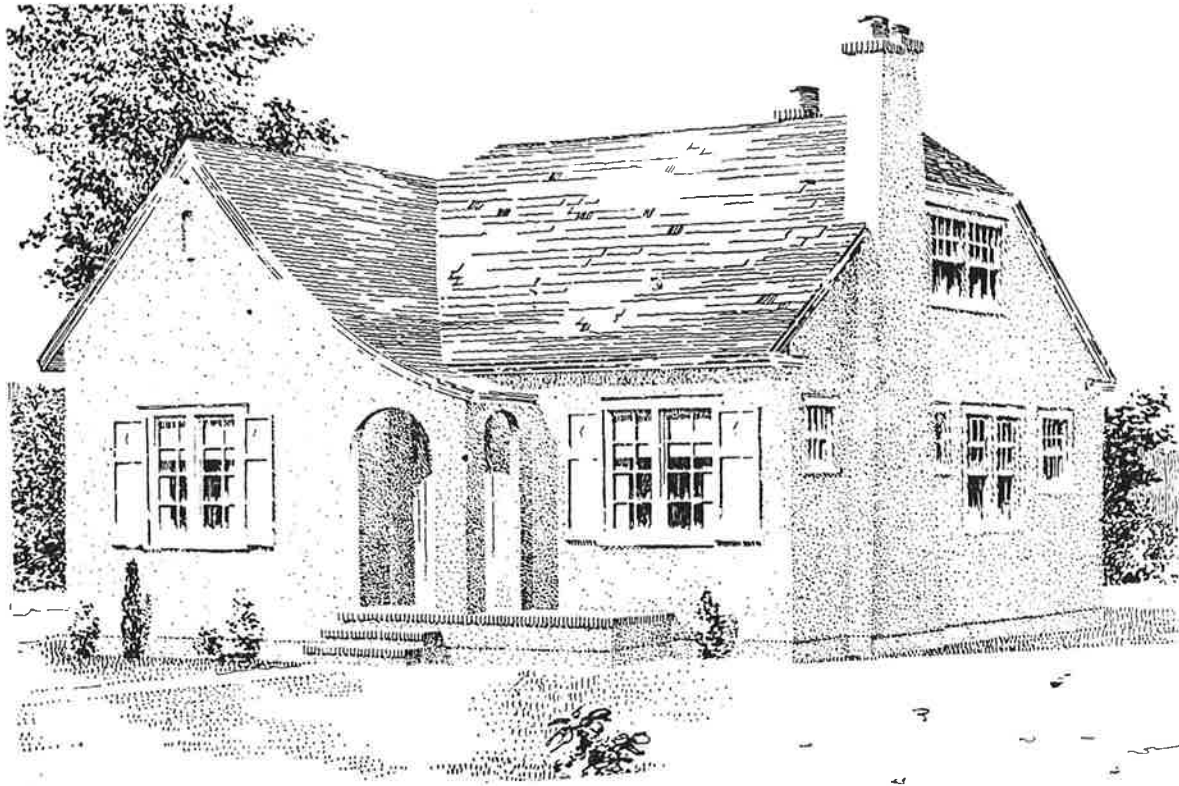
Drys with a beautiful Porcelaine Finish

ADHESIUM

The Stickiest thing on earth

Insures a permanent job with all wall paper or burlap.

276 THIRD STREET, CORNER THIRD AND JEFFERSON
Portland, Oregon

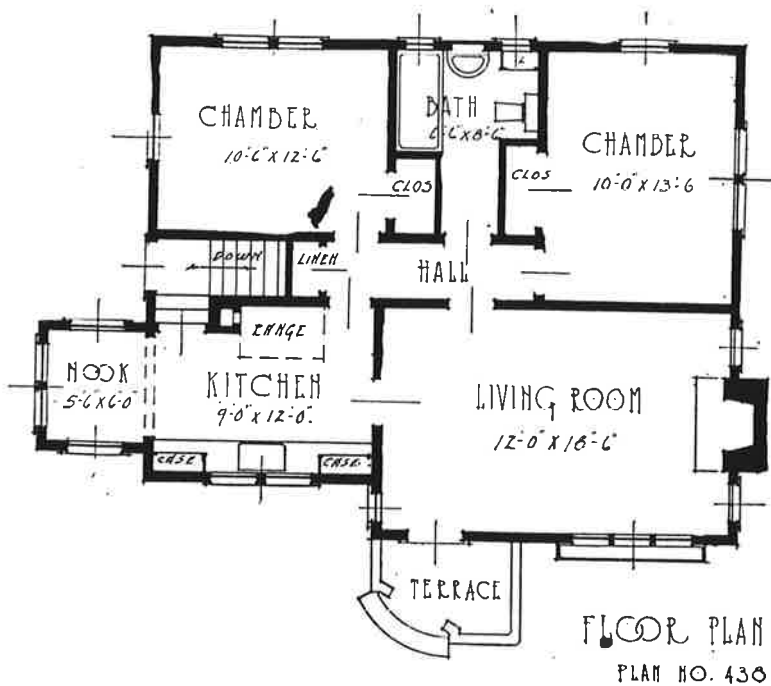
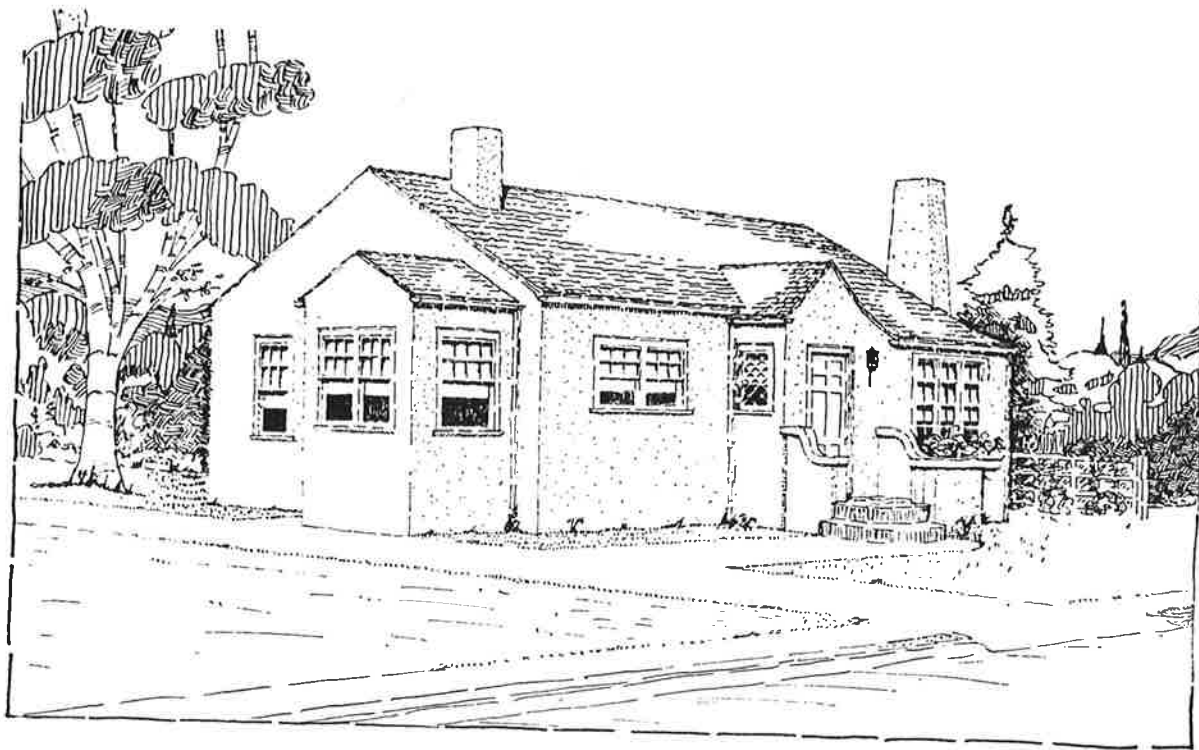


FLOOR PLAN
PLAN NO 436

Plan No. 436

Dimensions 28-0x32-6

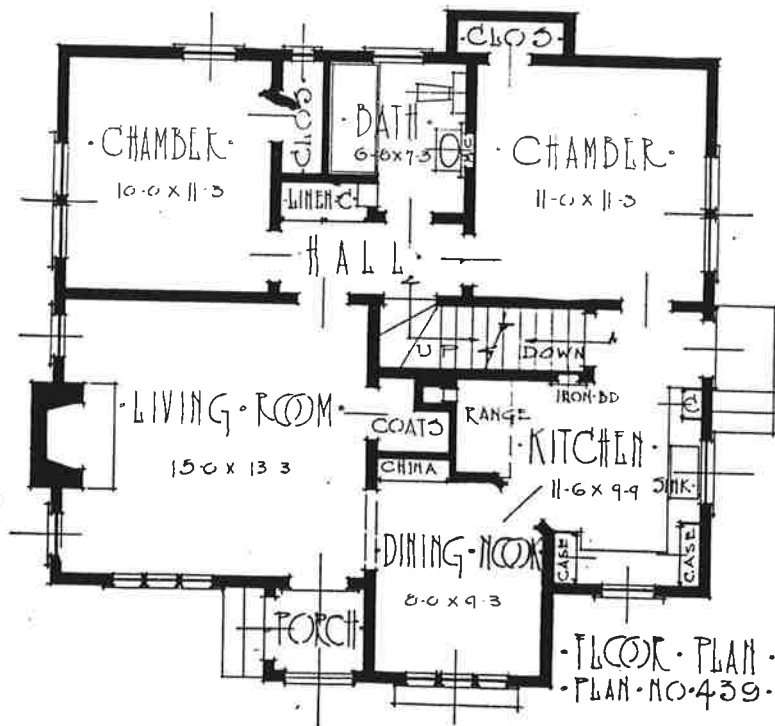
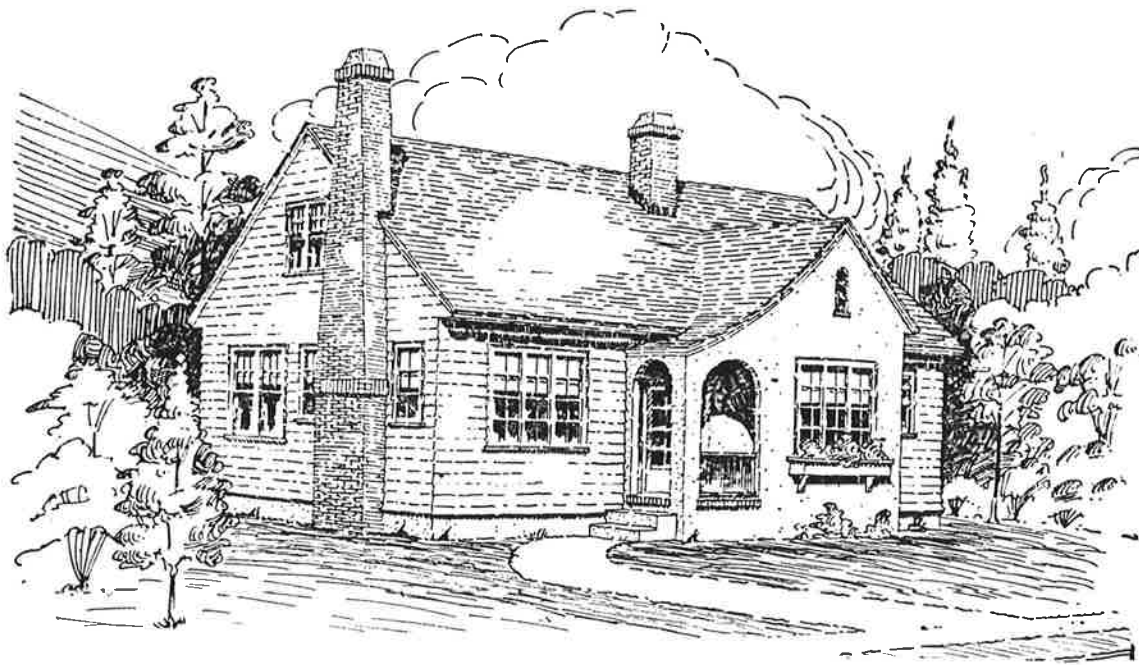
Floor area 870 sq. feet.



Plan No. 438

Dimensions 32-0x27-0

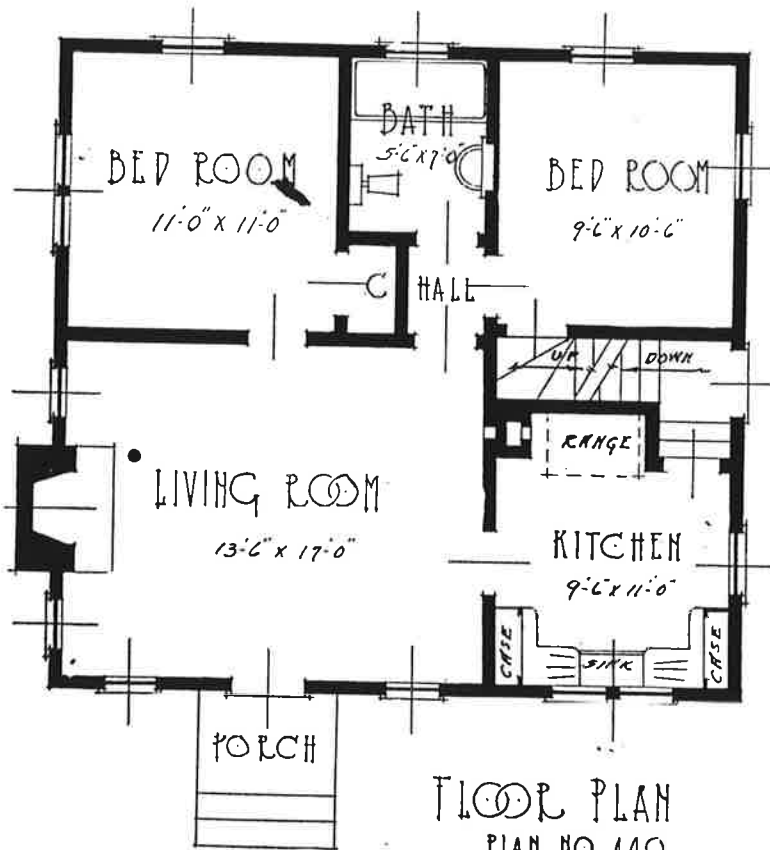
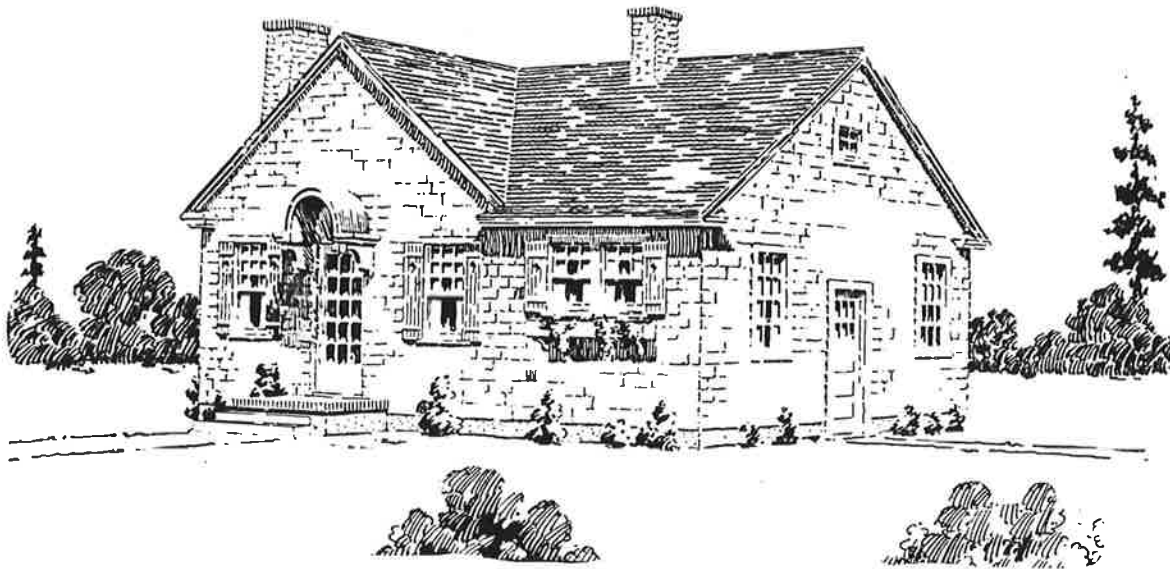
Floor area 848 sq. feet.



Plan No. 439

Dimensions 32-0x26-0

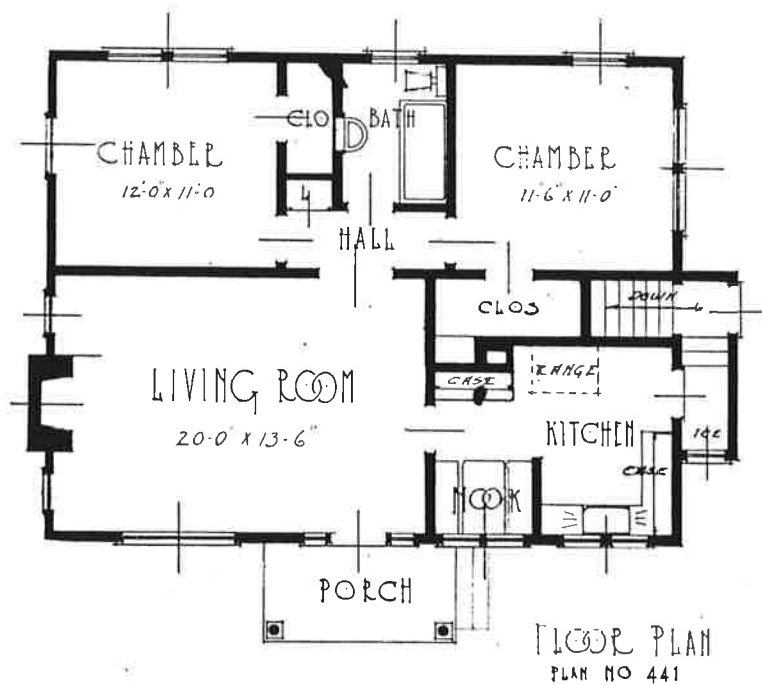
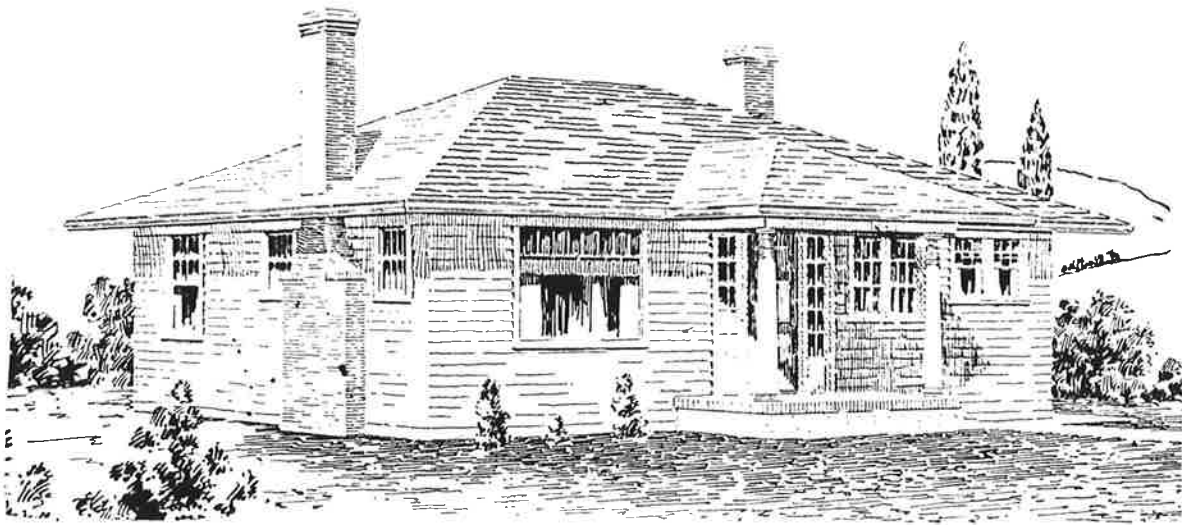
Floor area 895 sq. feet.



Plan No. 440

Dimensions 28-0x26-0

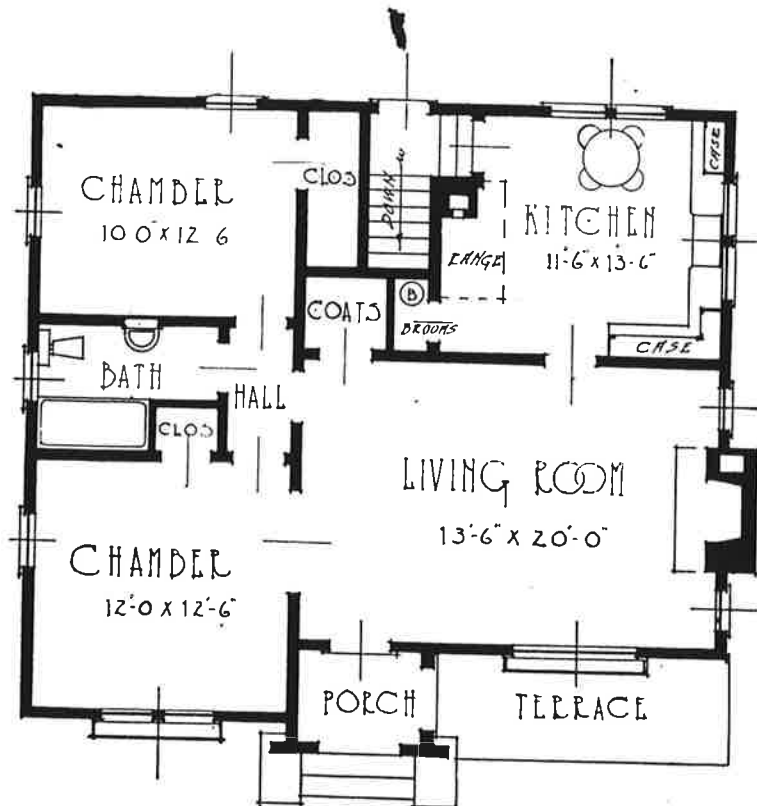
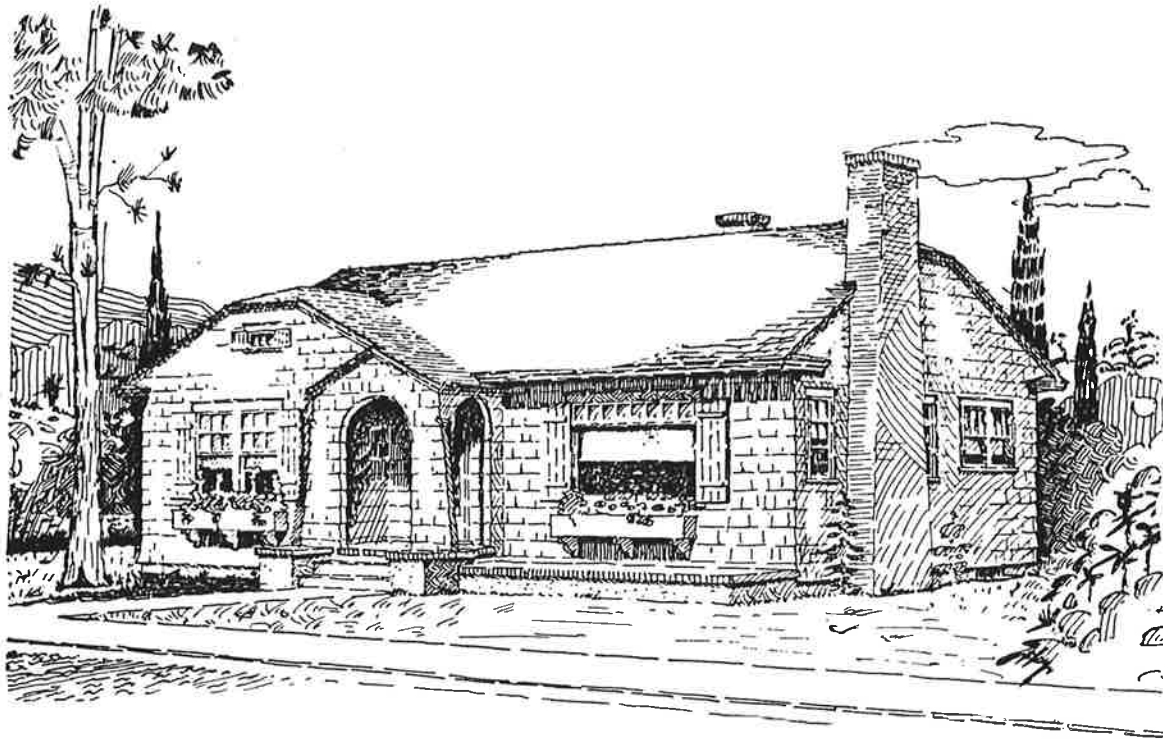
Floor area 728 sq. feet.



Plan No. 441

Dimensions 34-0x26-0

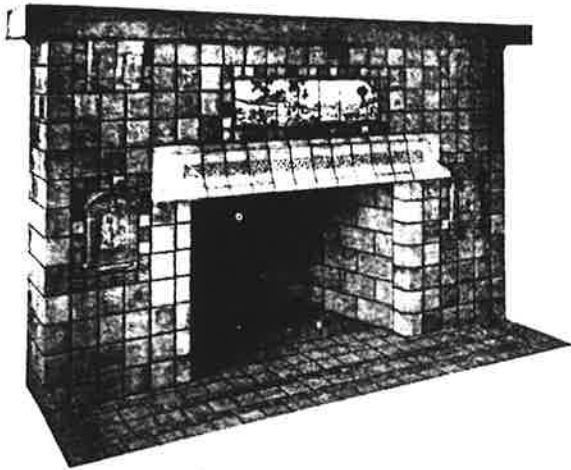
Floor area 918 sq. feet.



Plan No. 442

Dimensions 34-0x30-0

Floor area 972 sq. feet.



TILE

for

Drain Boards

Sink Backs

Mantels

Floors

Sun Porches

and

Wainscoting

{ We extend you a cordial invitation to visit our showroom and inspect our samples }

Our Specialty

Tile in Colors and
Pastel Shades



*Estimates Cheerfully
Given*



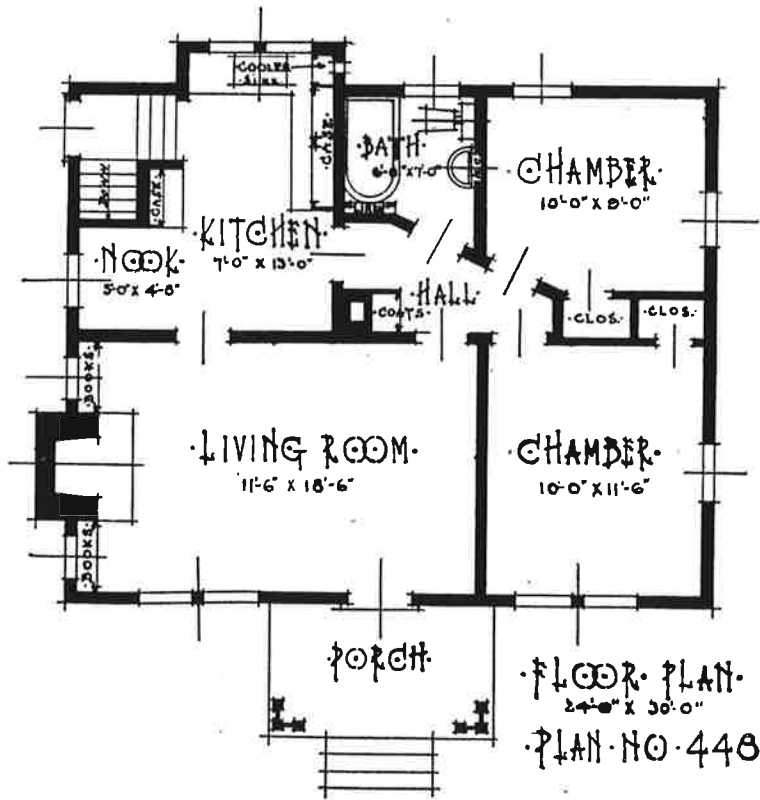
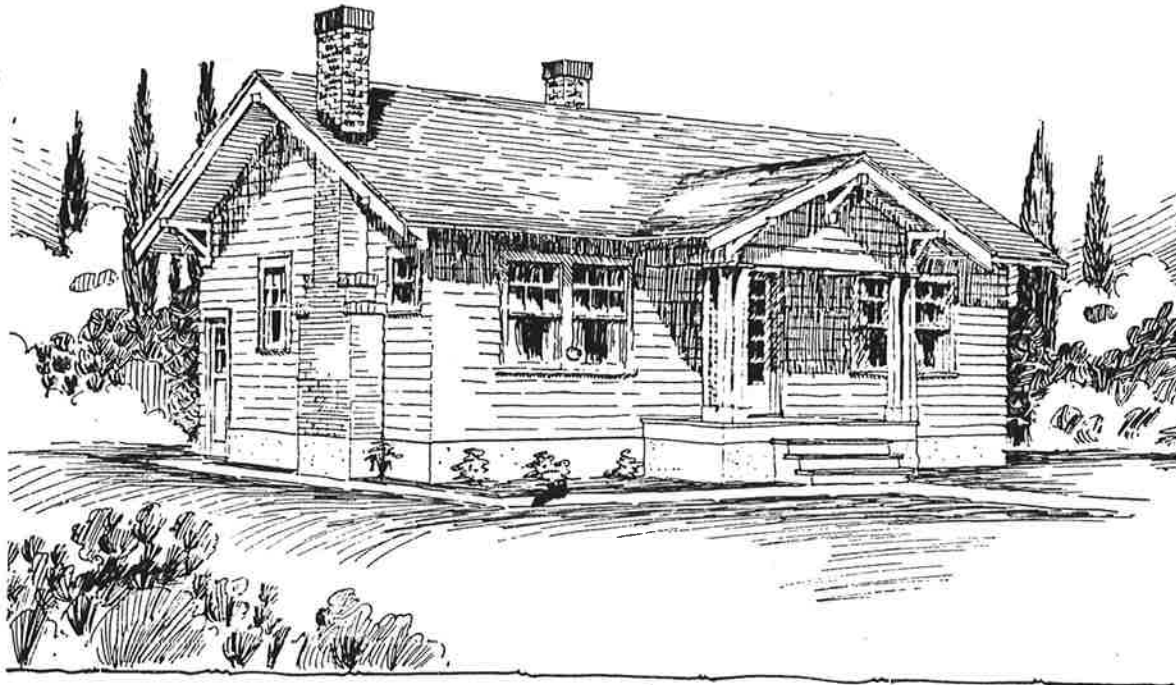
**PORTLAND
TILE CO.**

291 HAWTHORNE AVE.

Portland, Oregon

Tel. EAsT 8558

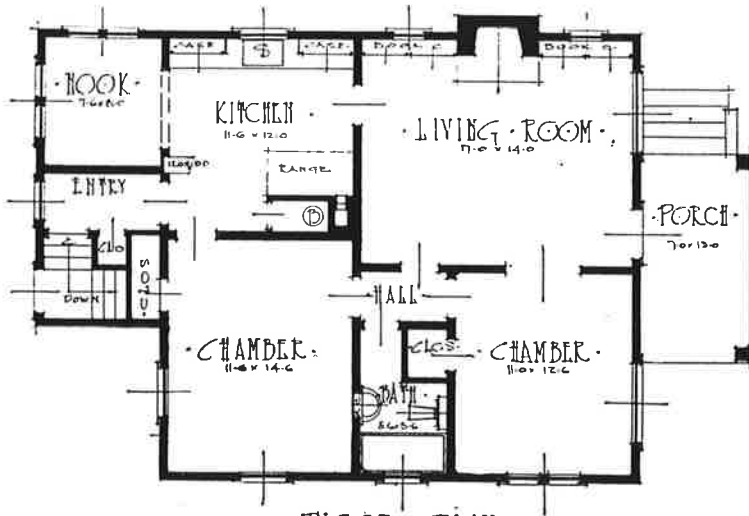
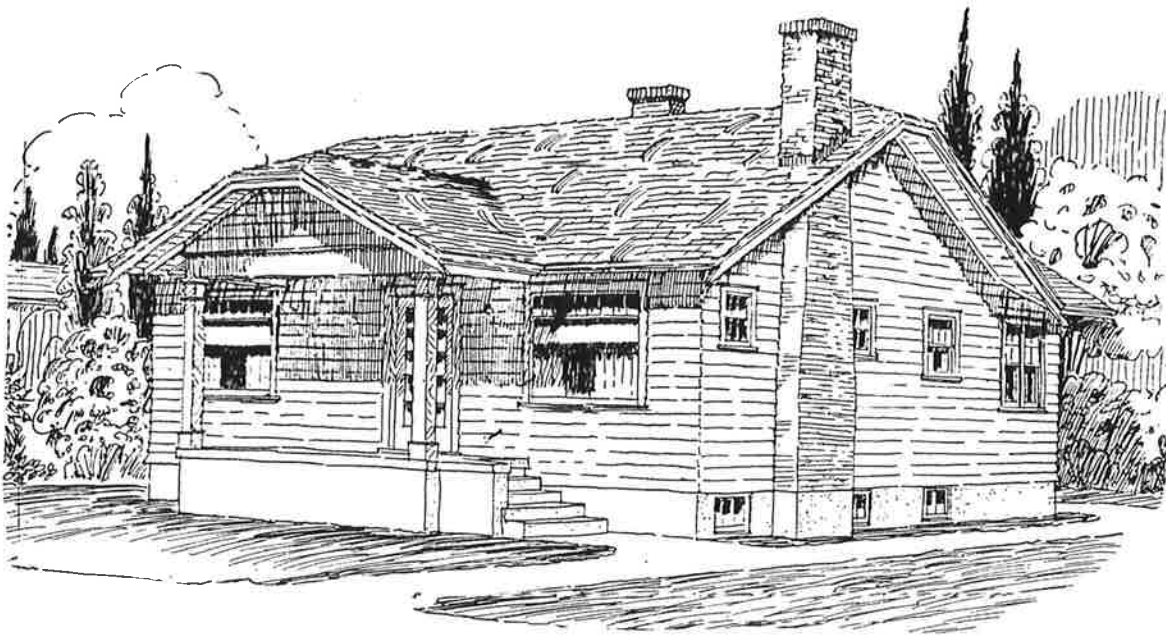




Plan No. 448

Dimensions 30-0x24-0

Floor area 736 sq. feet.

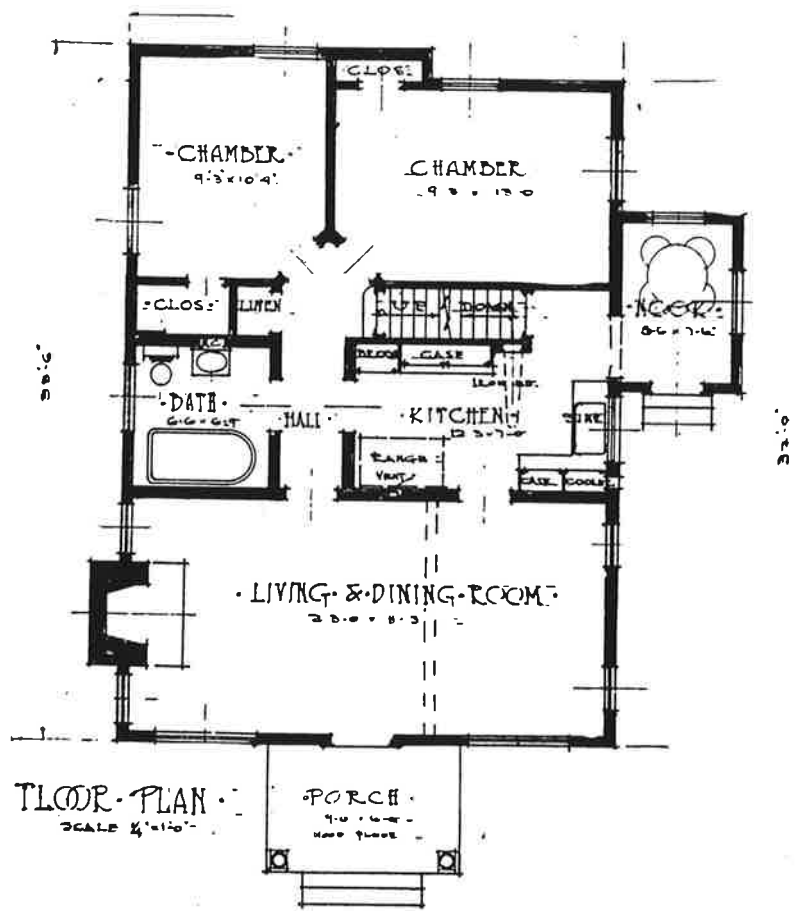
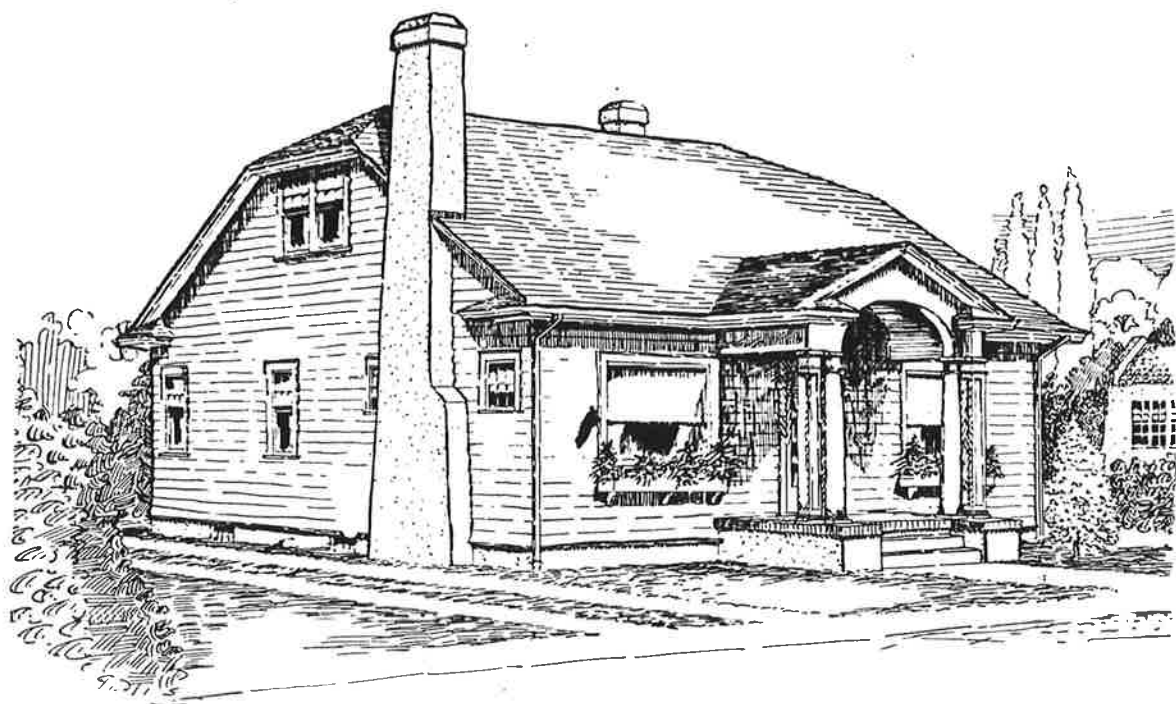


• FLOOR PLAN •
36'0" x 28'0"
• PLAN NO 452 •

Plan No. 452

Dimensions 28-0x38-0

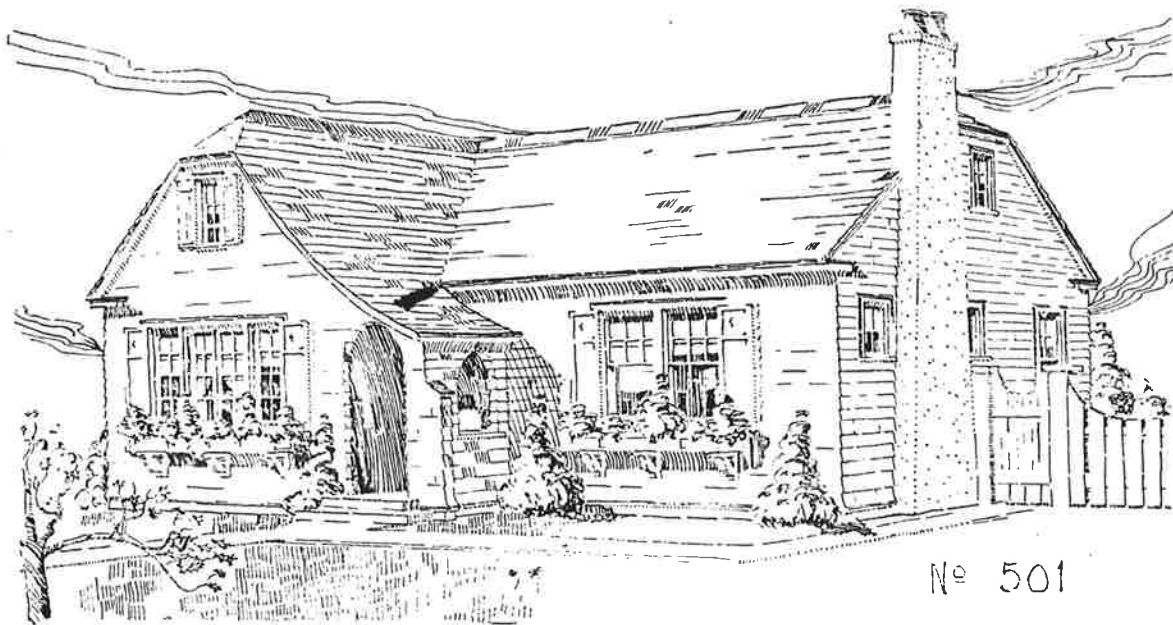
Floor area 988 sq. feet.



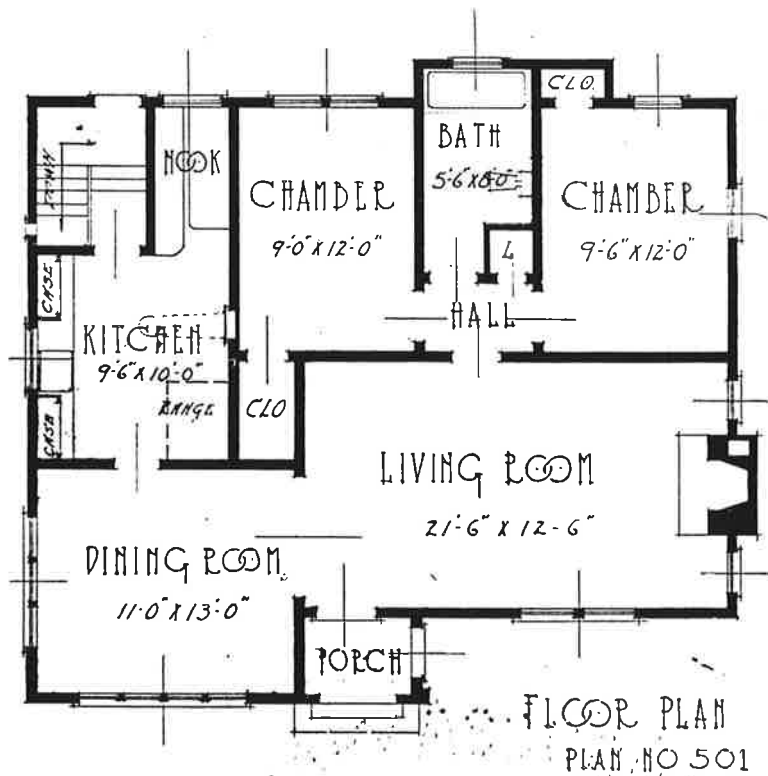
Plan No. 455

Dimensions 30-0x33-6

Floor area 842 sq. feet.



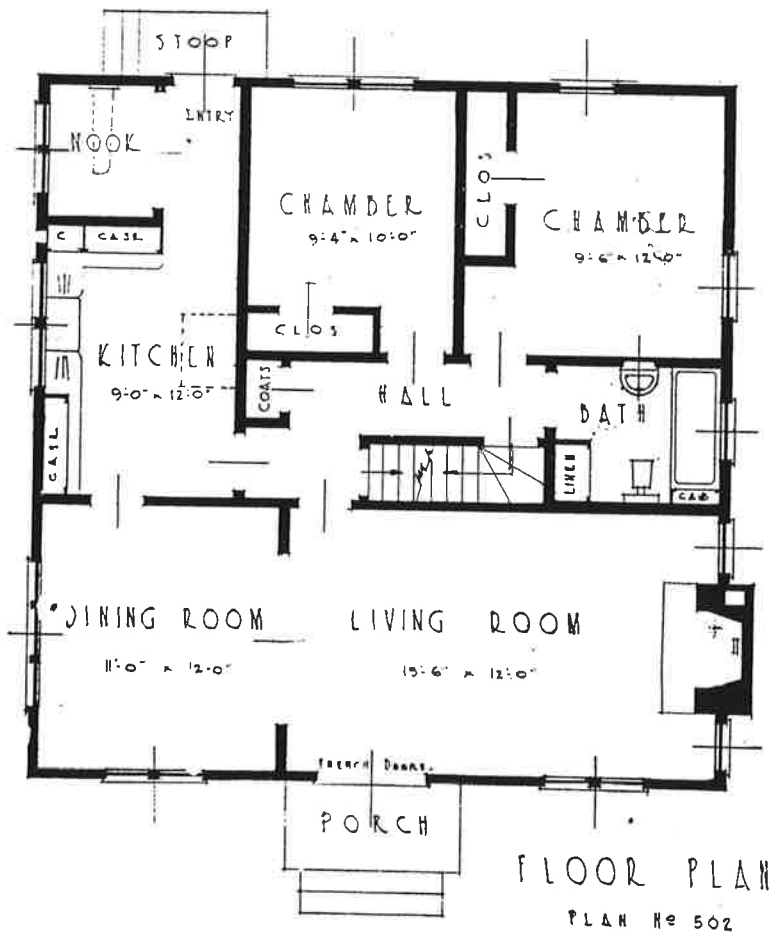
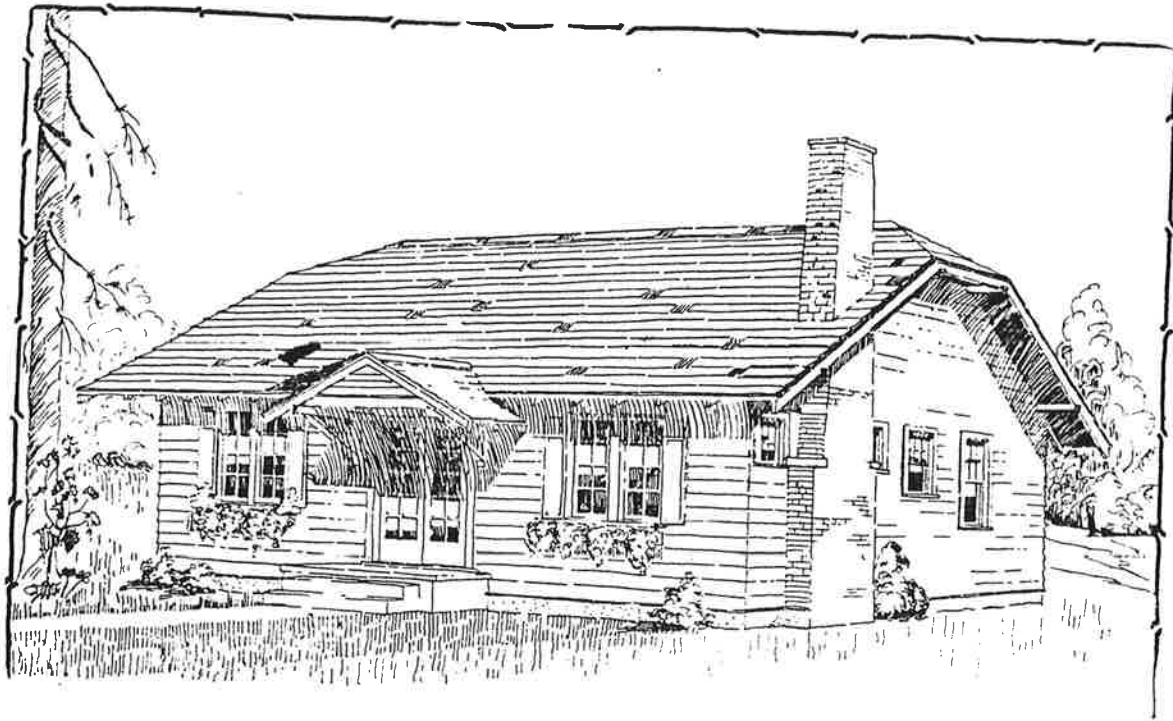
No 501



Plan No. 501

Dimensions 36-0x30-6

Floor area 1098 sq. feet.



Plan No. 502

Dimensions 32-0x32-0

Floor area 1024 sq. feet.

The Specifications for your home should include —

CABOTS Insulating and deadening Quilt

CABOTS Creosote Shingle Stains (any shade).

CABOTS Double White (for wood or masonry).

PEERLESS Built-in Fixtures.

HOOSIER Built-in Kitchen Cabinets.

MAILO BOX (Built-in Mail Boxes).

FASSIO Electric Dish Washing Sinks.

MILWAUKEE Expanded metal casings (door and window).

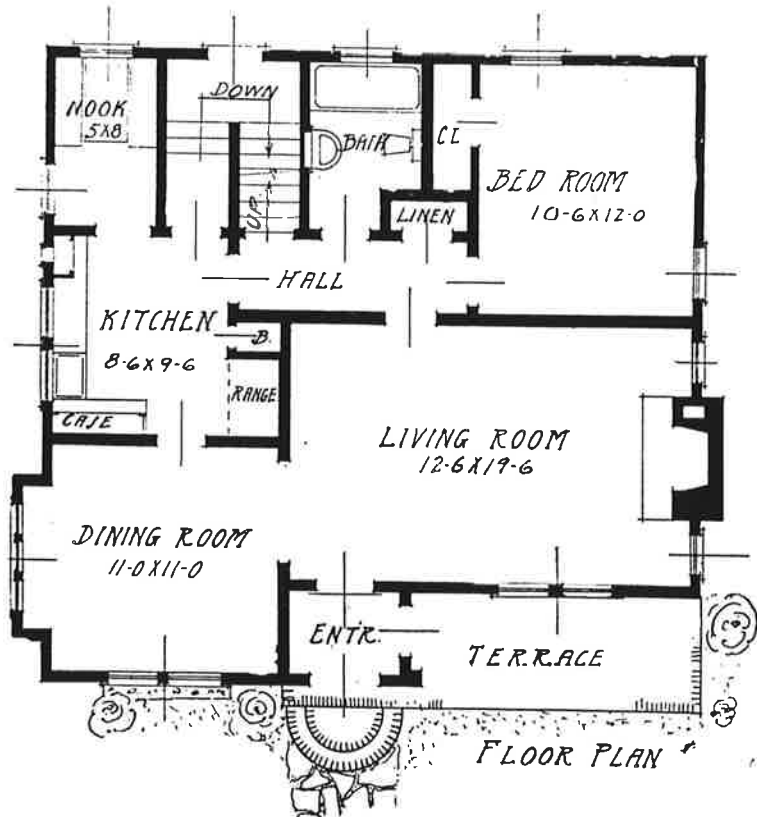
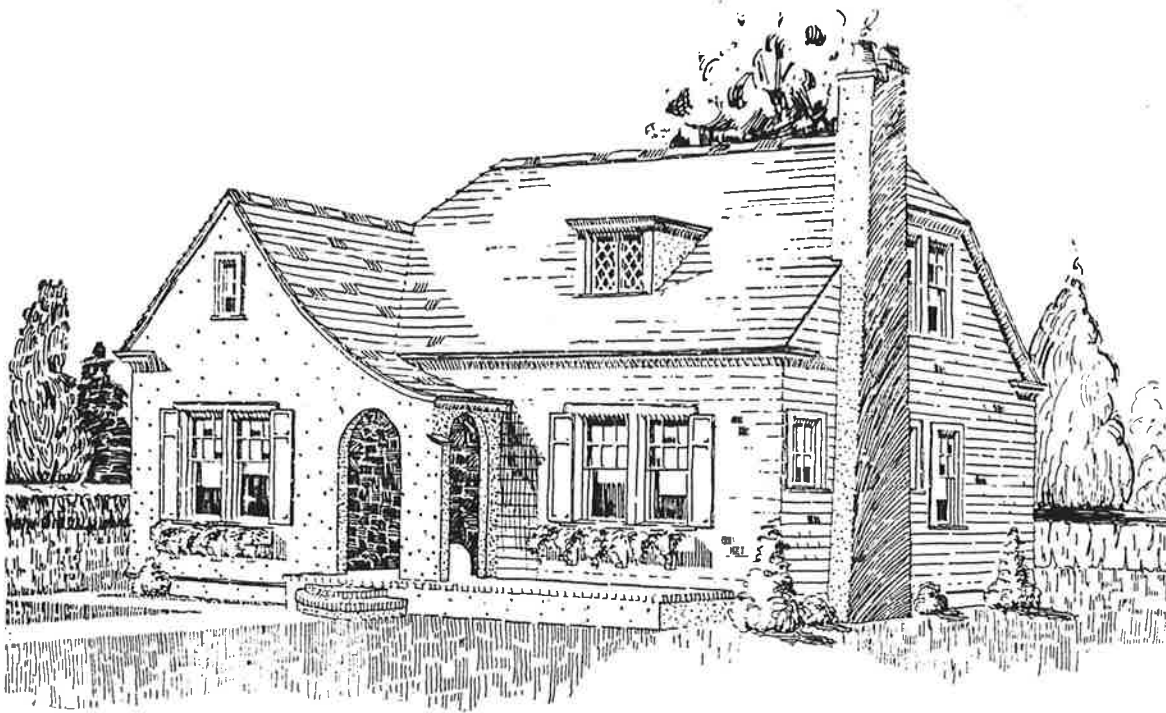
MILWAUKEE Expanded metal corner bead and Lath.

96-98 Front St.
Phone BR 7919

Cress & Co
INCORPORATED

Portland
Oregon.

DISTRIBUTORS OF
NATIONALLY RECOGNIZED BUILDING SPECIALTIES.

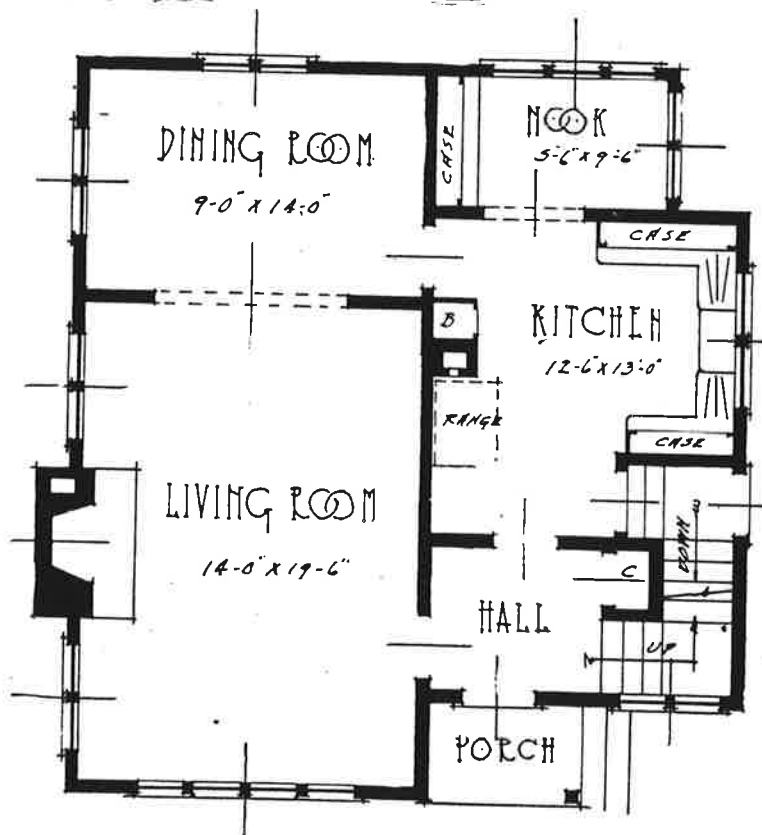
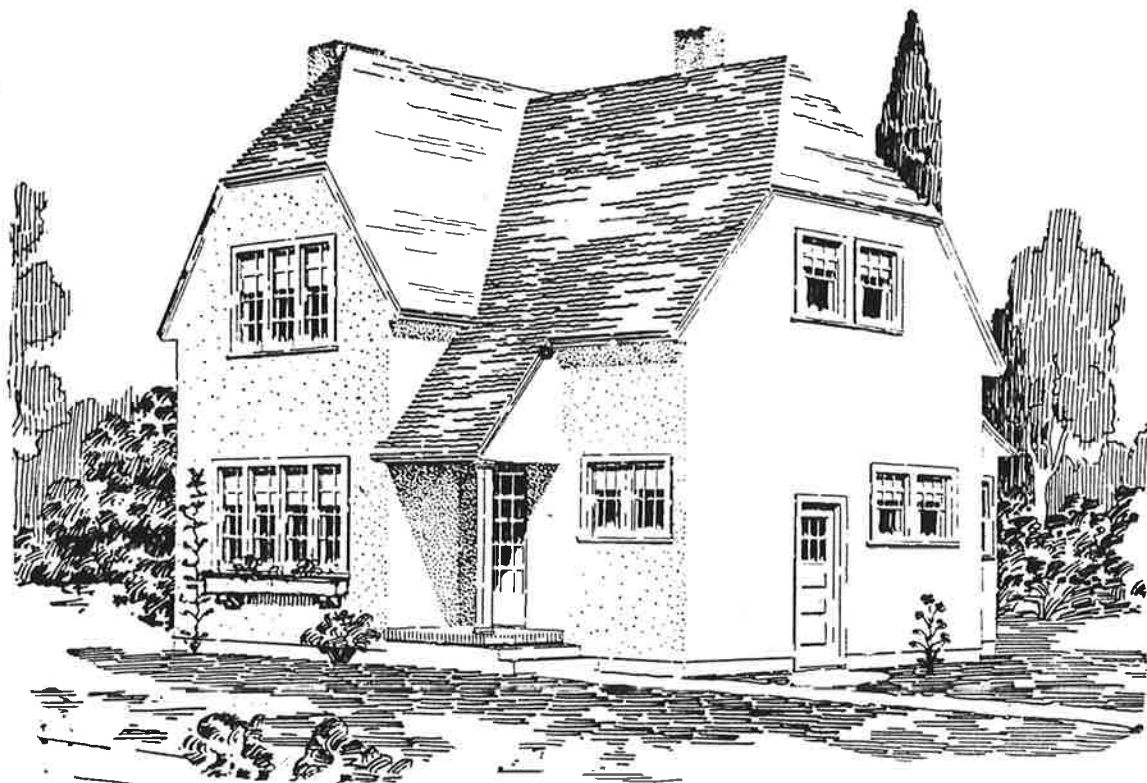


Plan No. 503

Dimensions 32-0x30-6

Floor area 925 sq. feet.

1 Room finished
2nd floor



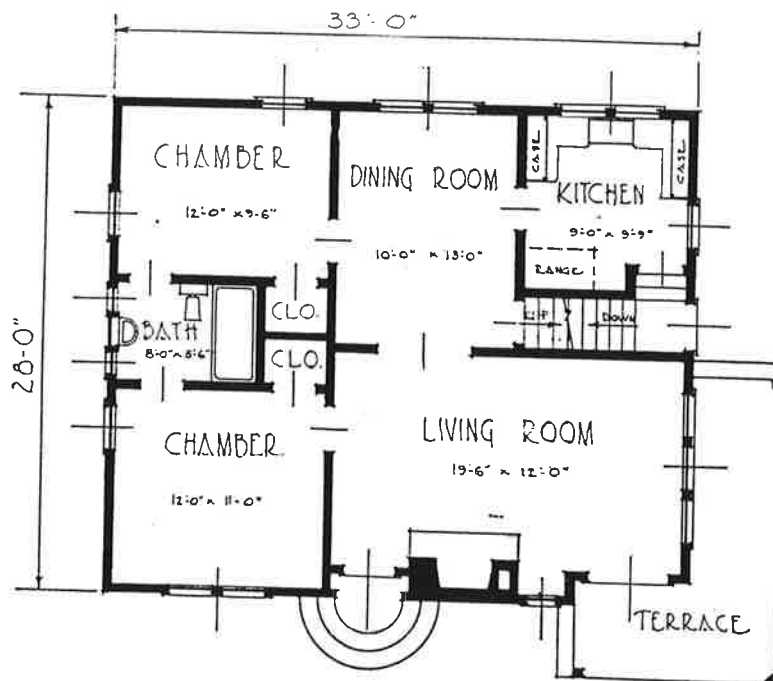
FIRST FLOOR PLAN
PLAN NO 504

Plan No. 504

Dimensions 30-0x28-0

Floor area 840 sq. feet.

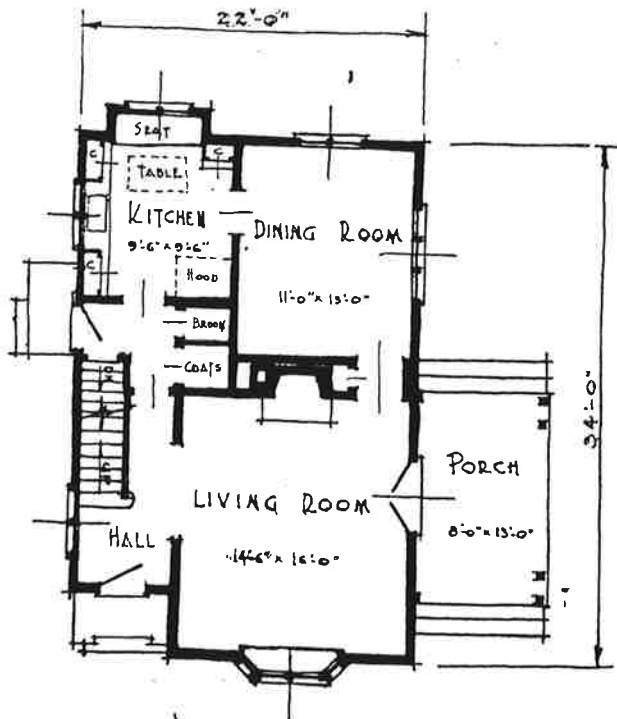
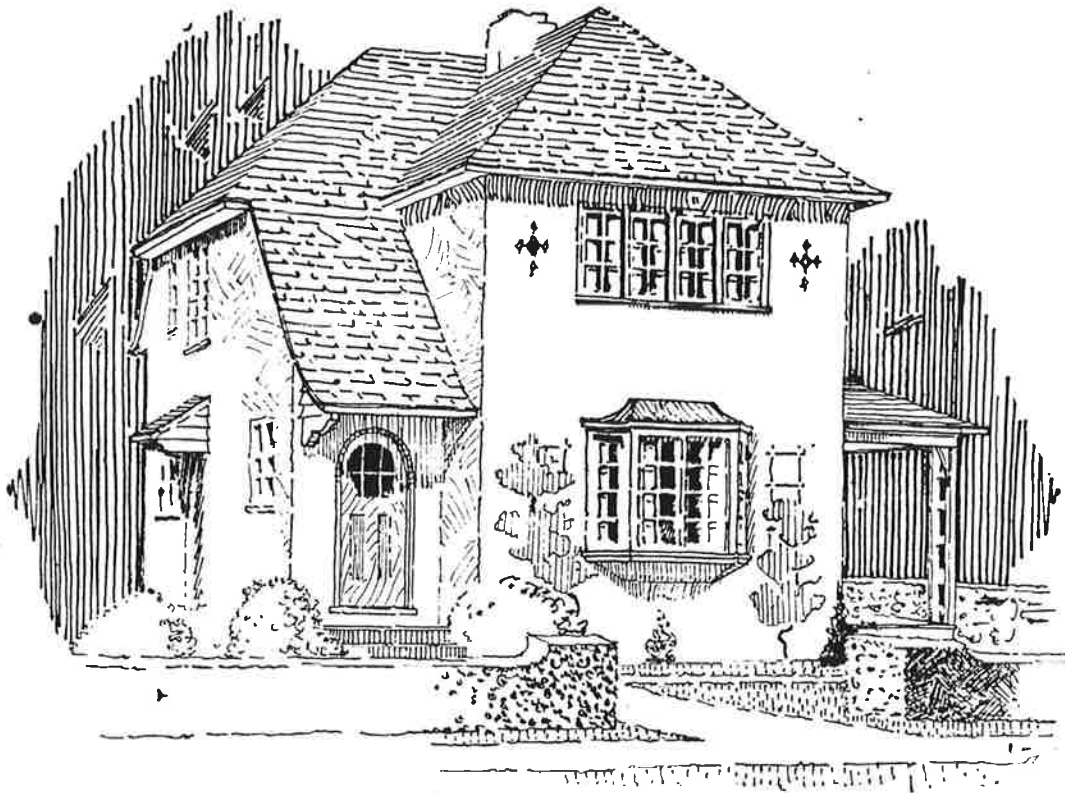
Two chambers, dressing room and bath on second floor.



Plan No. 506

Dimensions 33-0x28-0

Floor area 924 sq. feet.



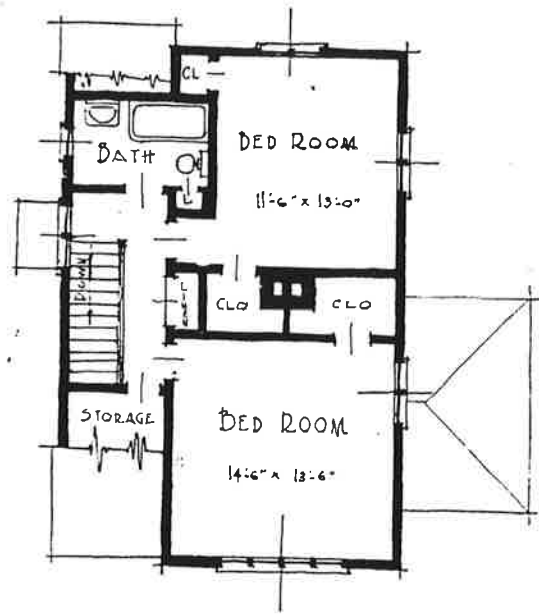
FIRST FLOOR

Plan No. 507

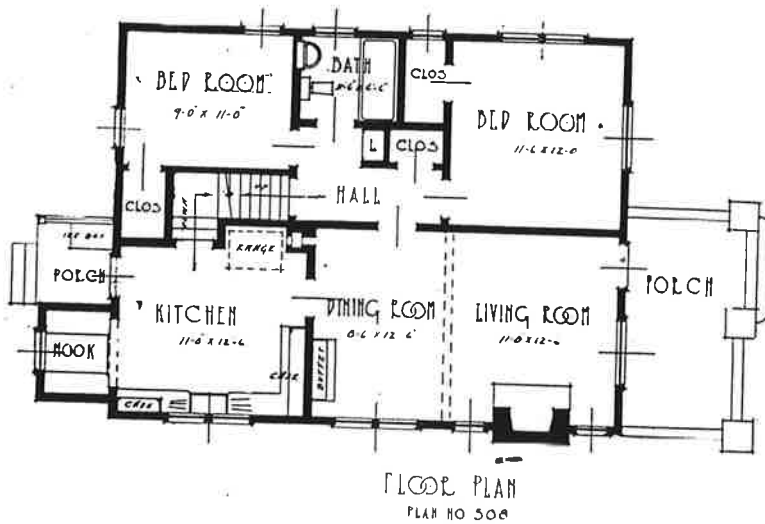
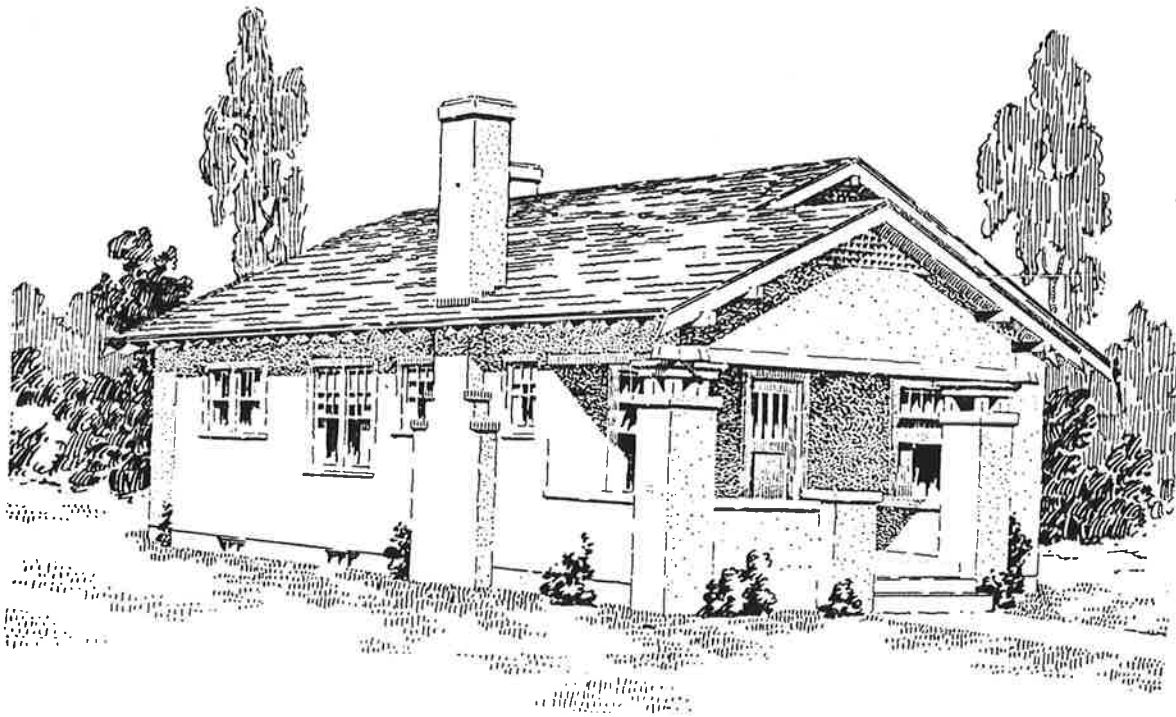
Dimensions 22-0x34-0

Floor area 920 sq. feet.

Second floor plan on next page.



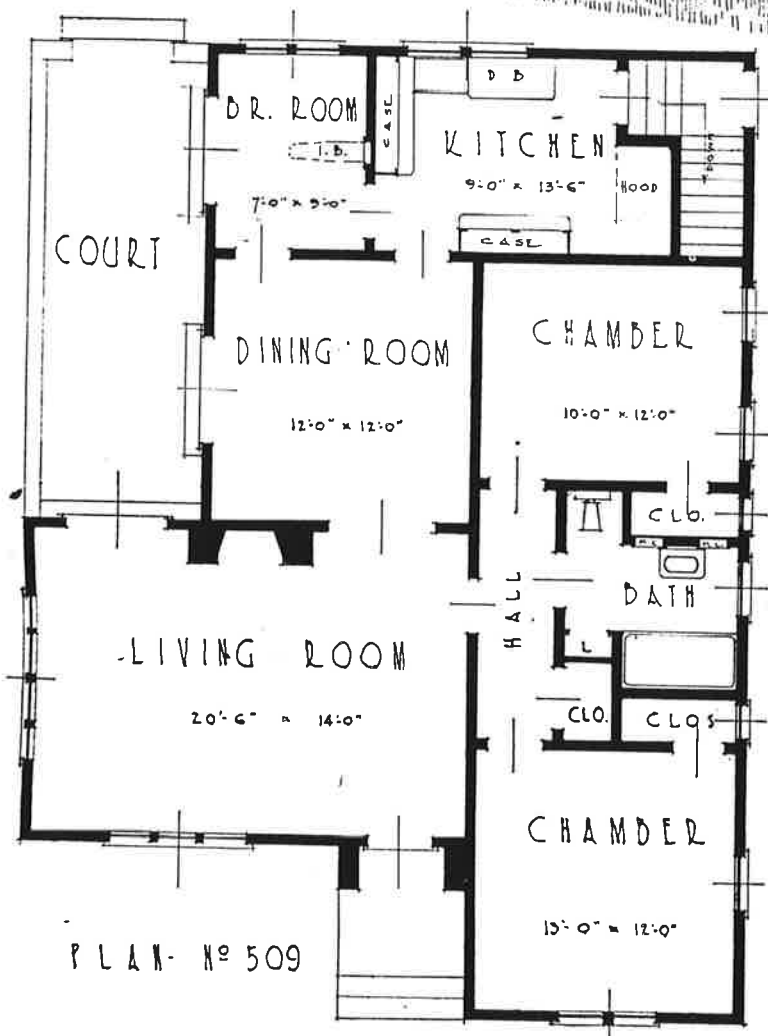
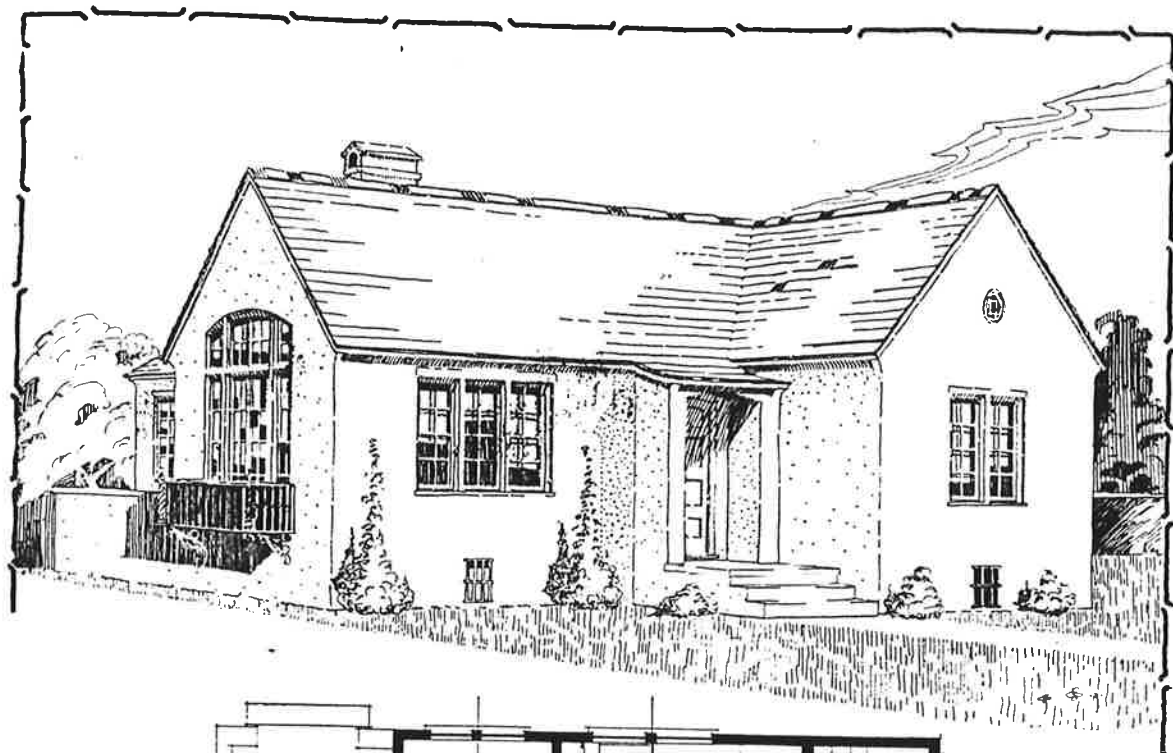
SECOND FLOOR



Plan No. 508

Dimensions 34-0x26-0

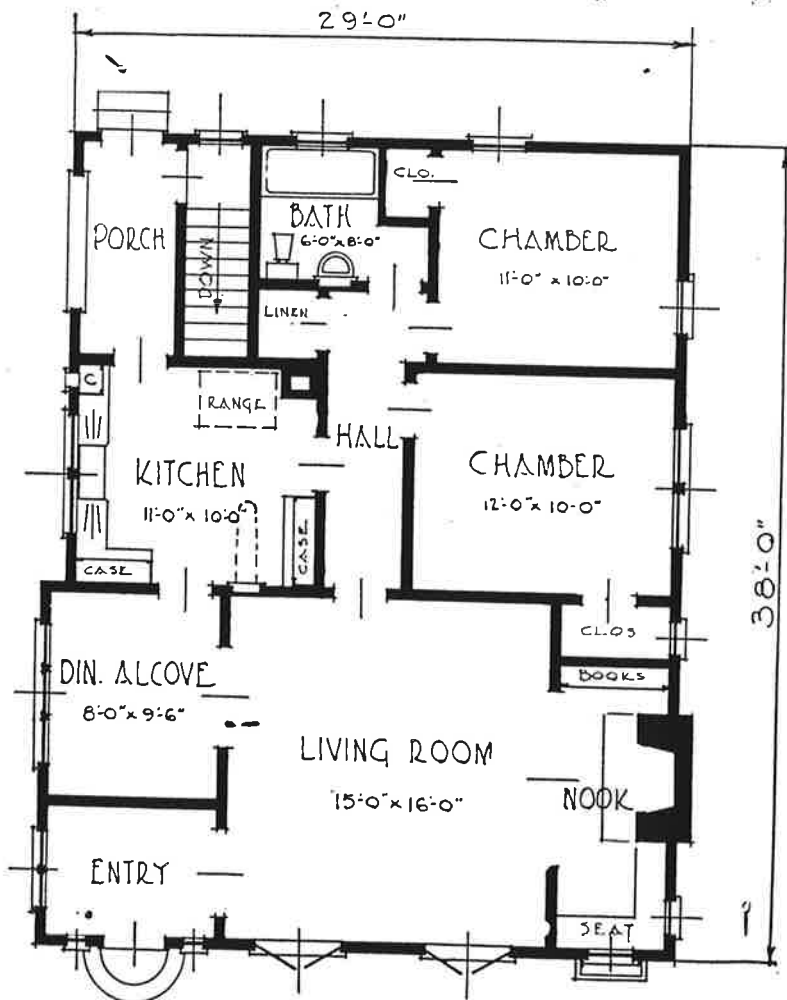
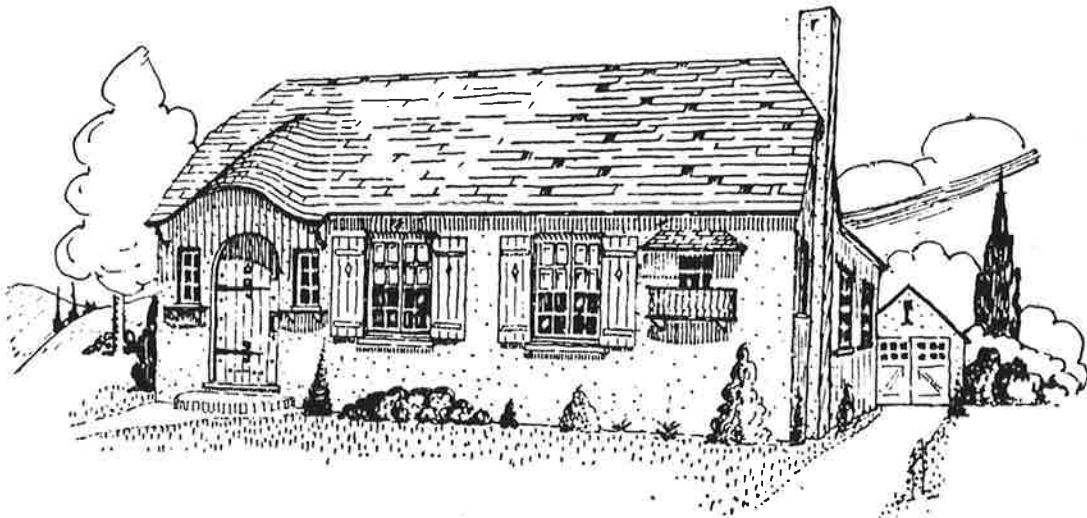
Floor area 884 sq. feet



Plan No. 509

Dimensions 34-0x45-0

Floor area 1124 sq. feet.

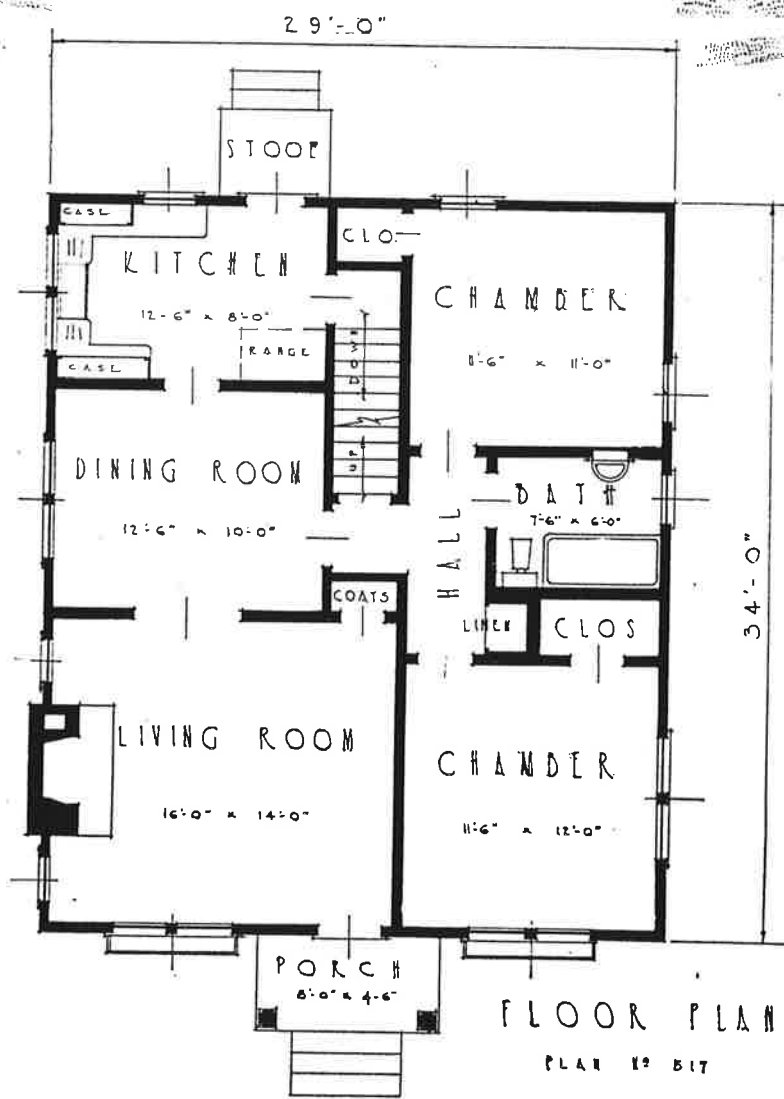


FLOOR PLAN

Plan No. 512

Dimensions 30-0x38-0

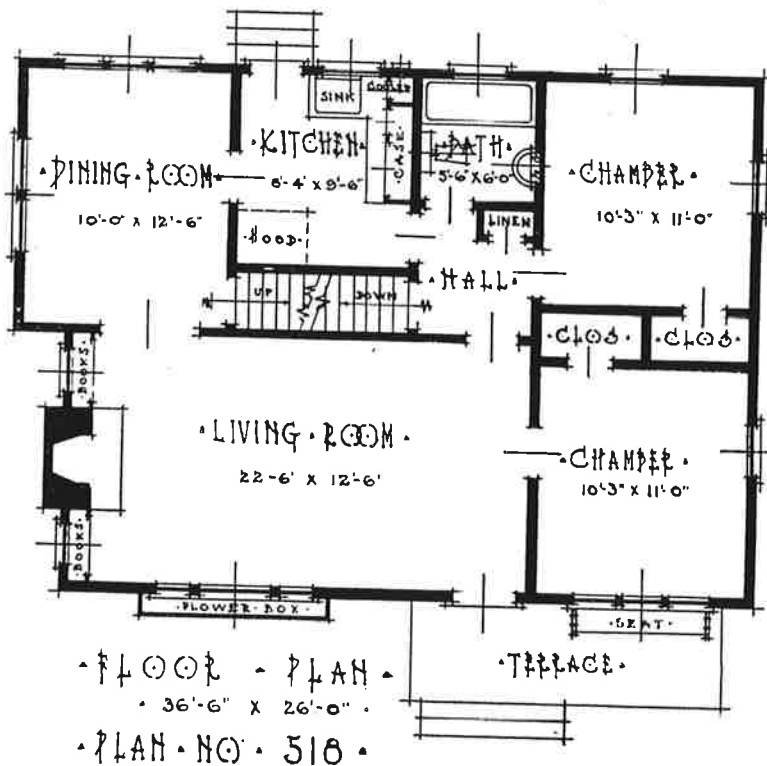
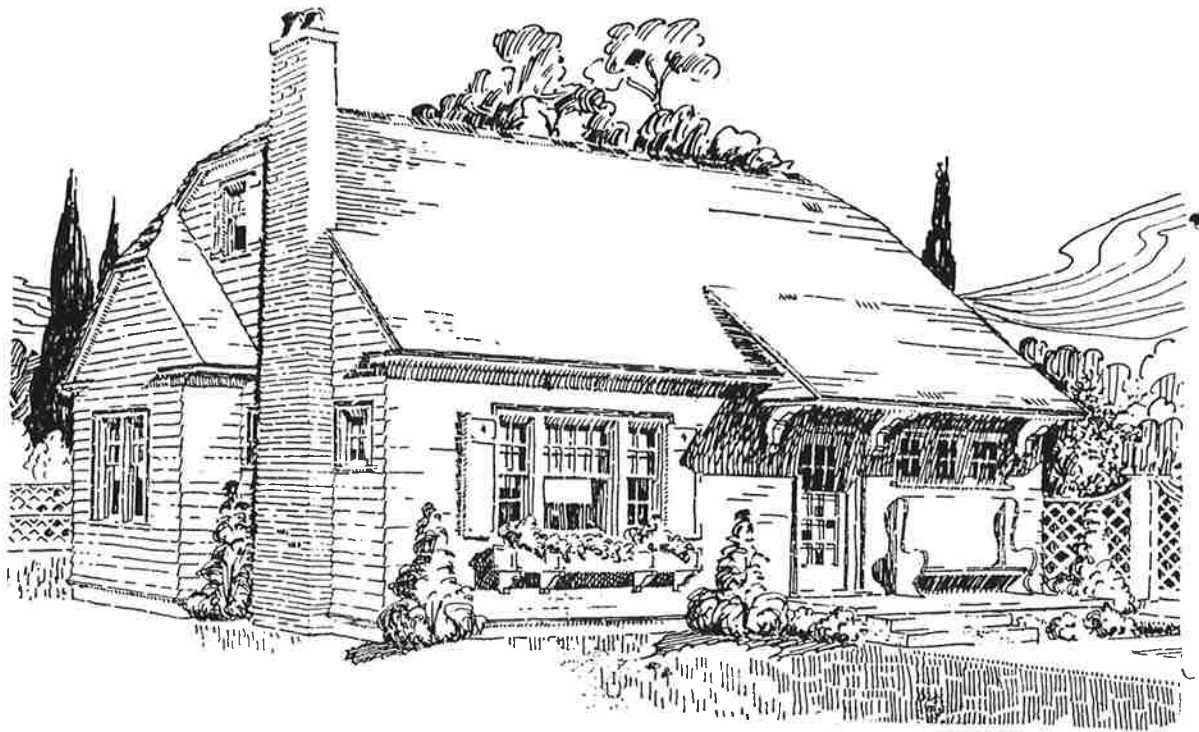
Floor area 1120 sq. feet.



Plan No. 517

Dimensions 29-0x34-0

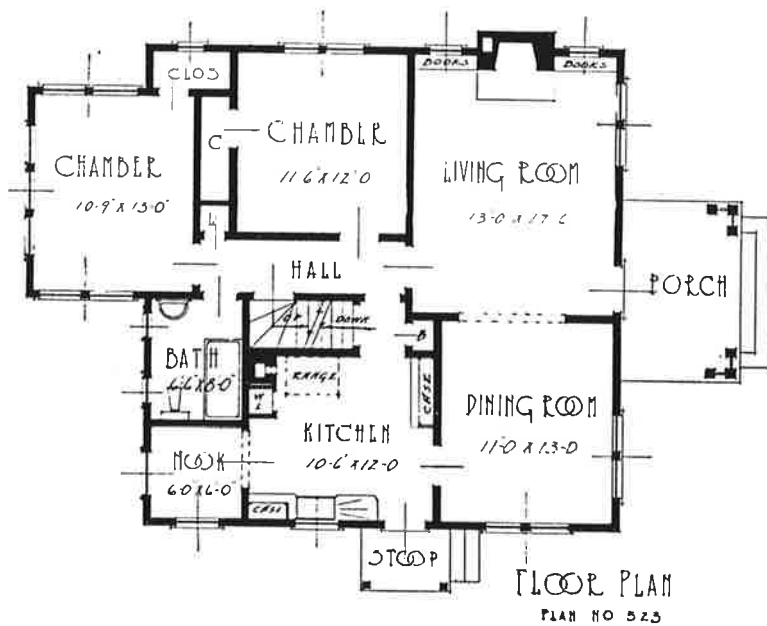
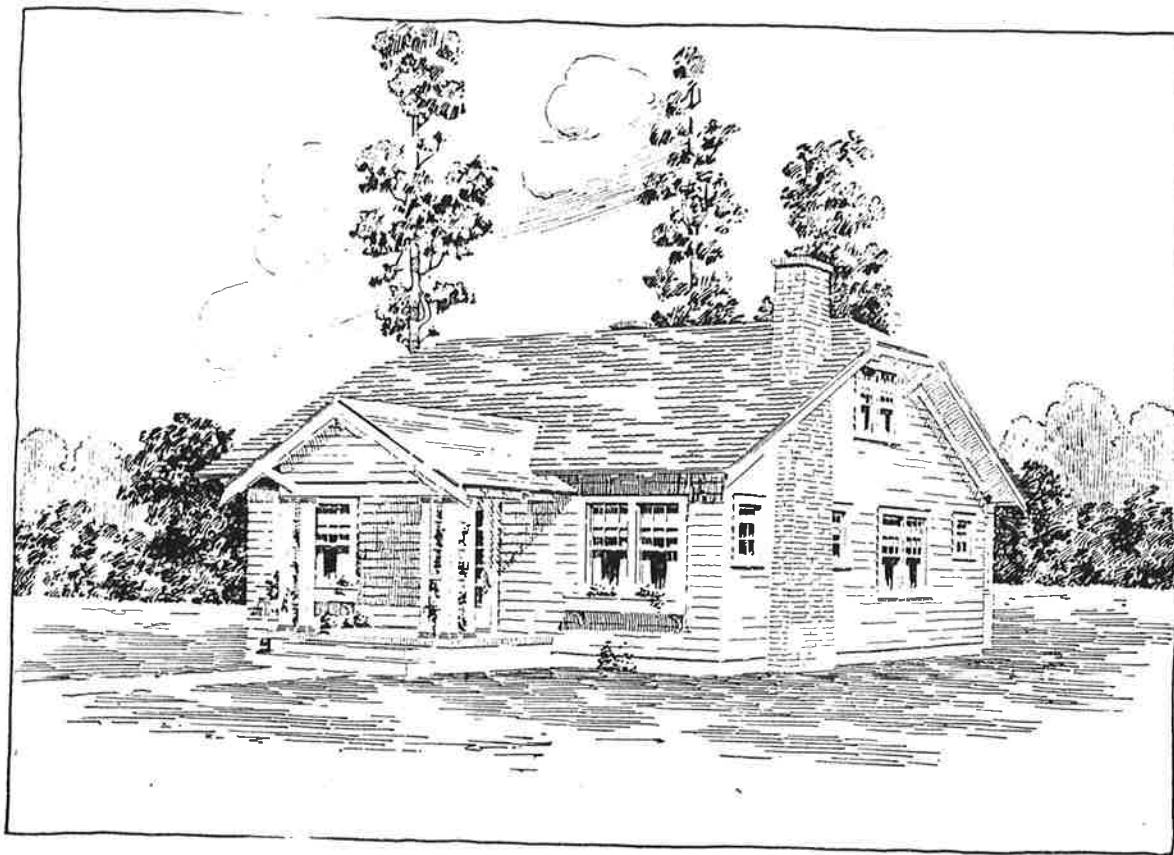
Floor area 986 sq. feet



Plan No. 518

Dimensions 36-6x26-0

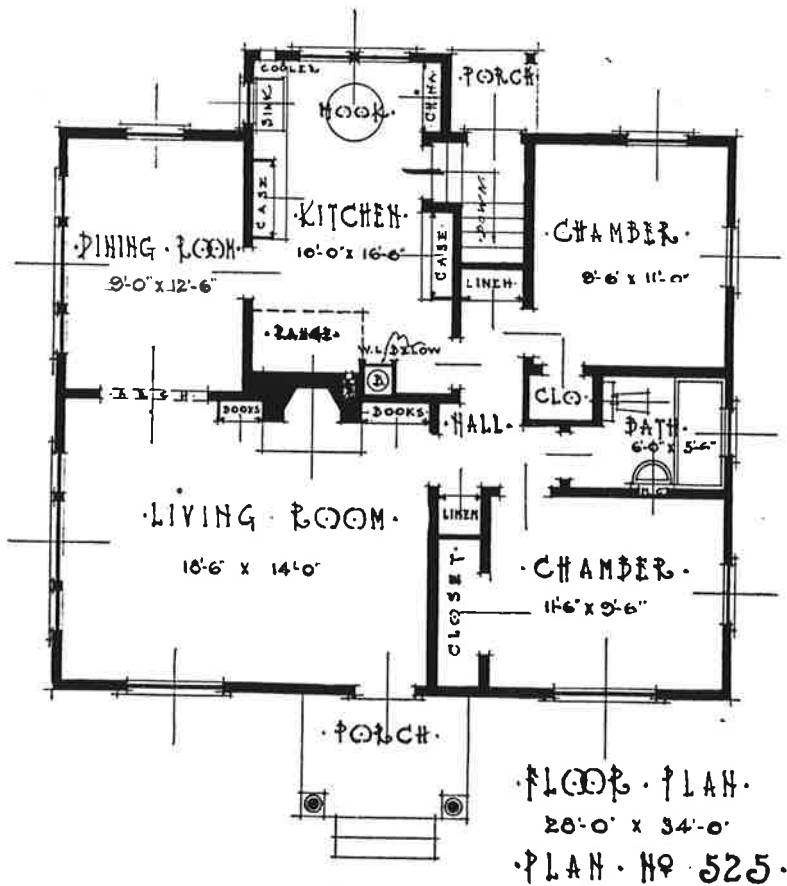
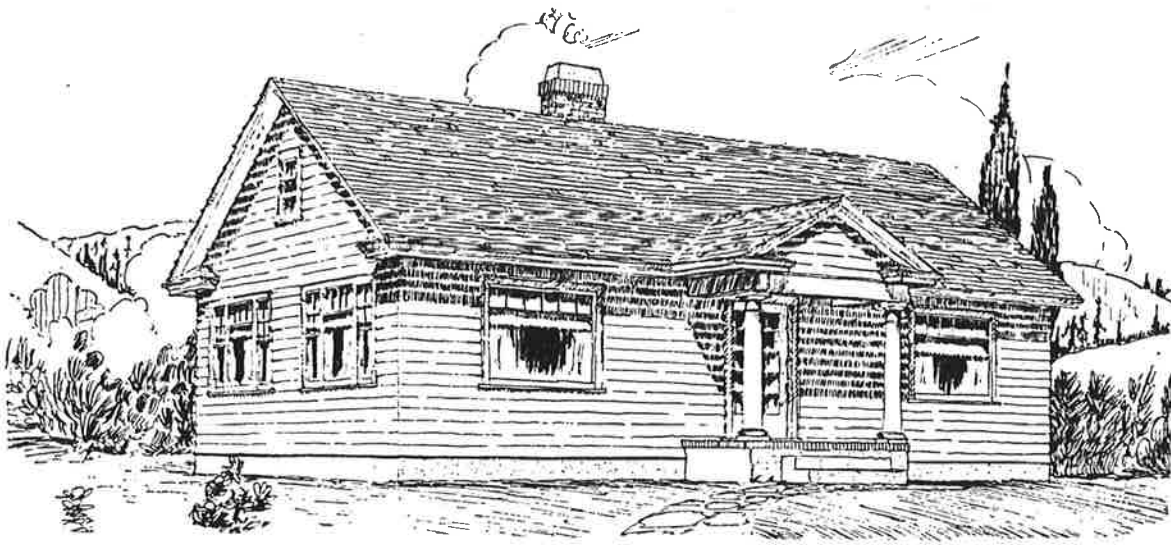
Floor area 918 sq. feet.



Plan No. 523

Dimensions 40-0x32-0

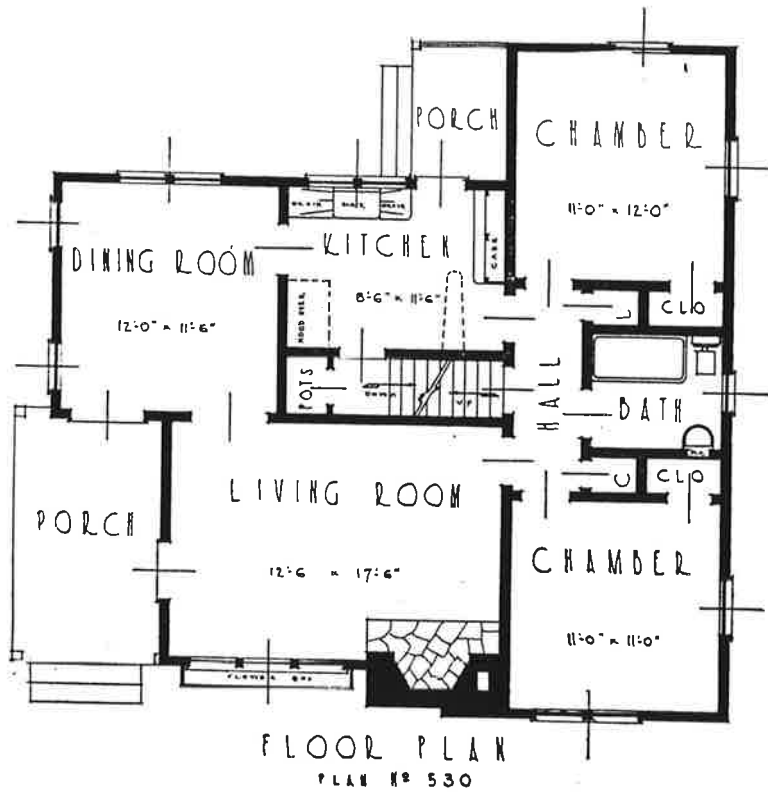
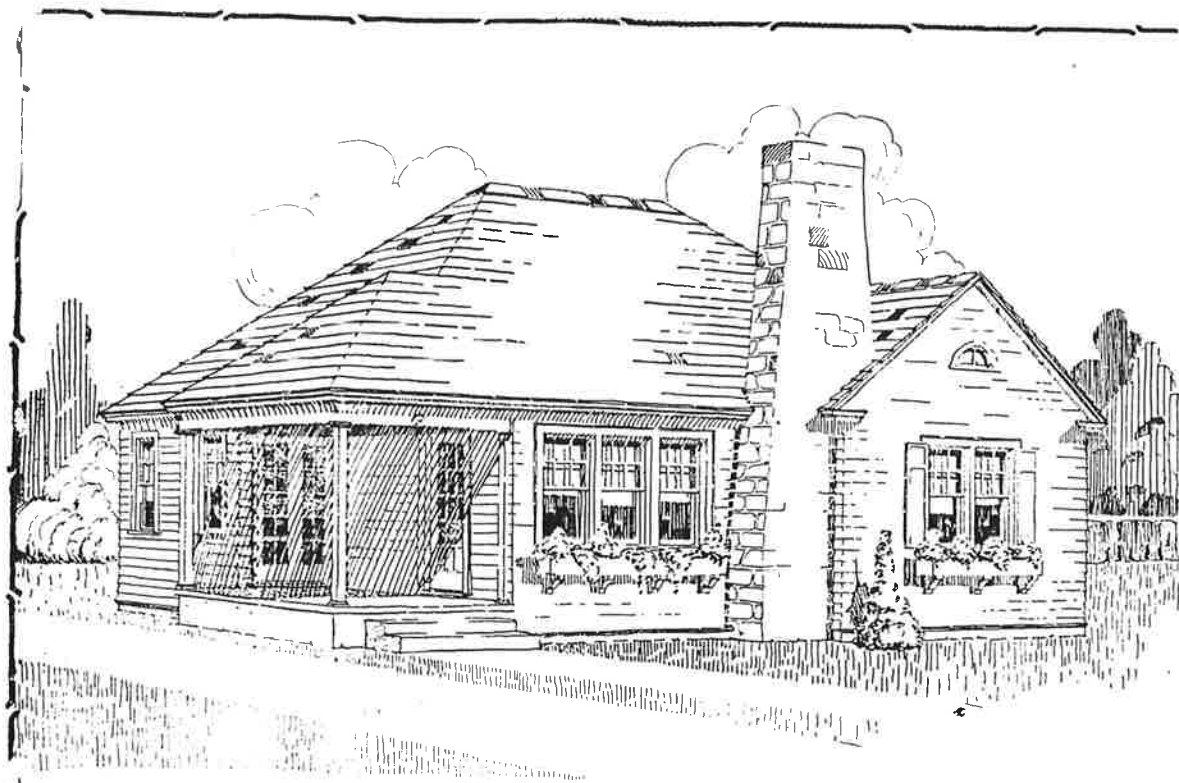
Floor area 1136 sq. feet.



Plan No. 525

Dimensions 34-0x28-0

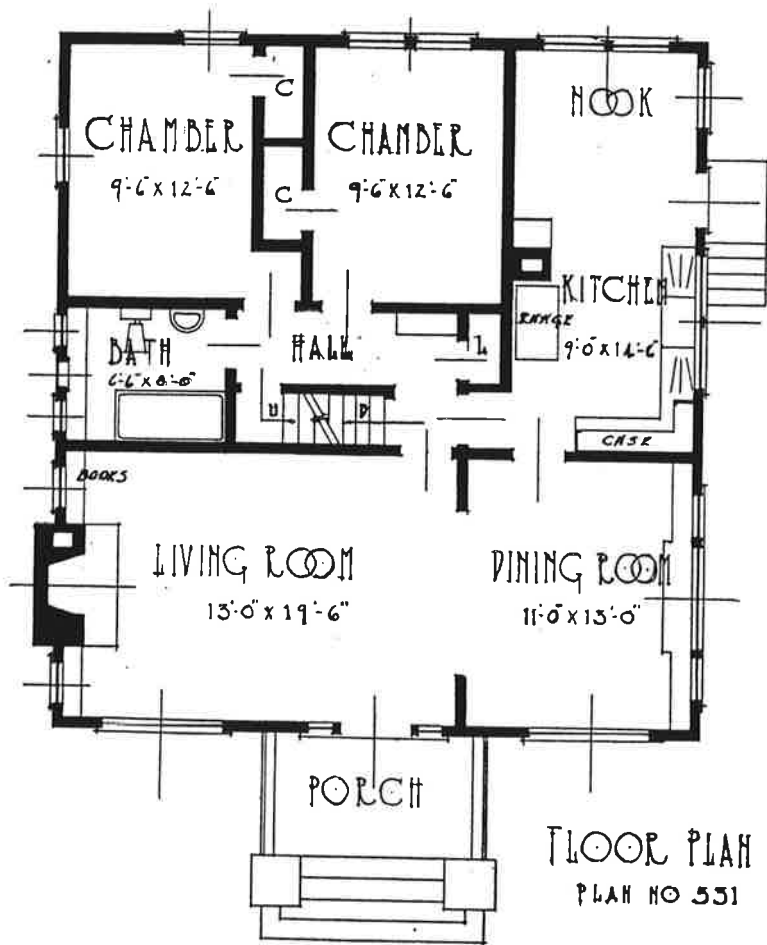
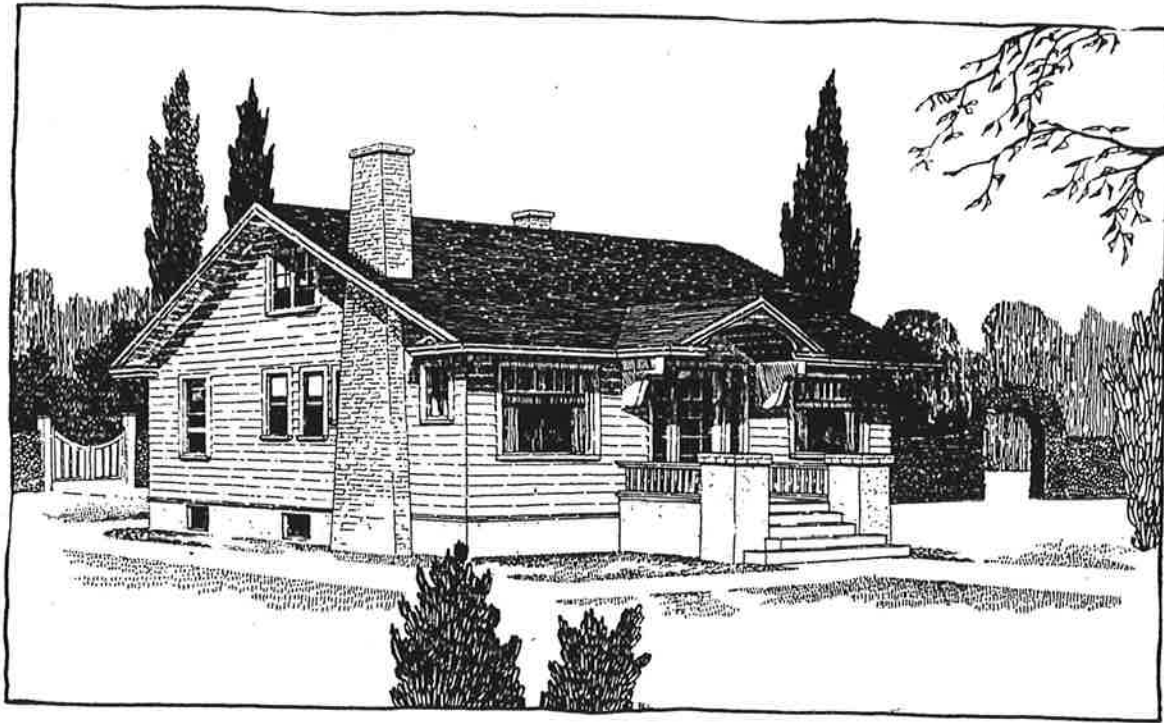
Floor area 1058 sq. feet.



Plan No. 530

Dimensions 38-0x35-6

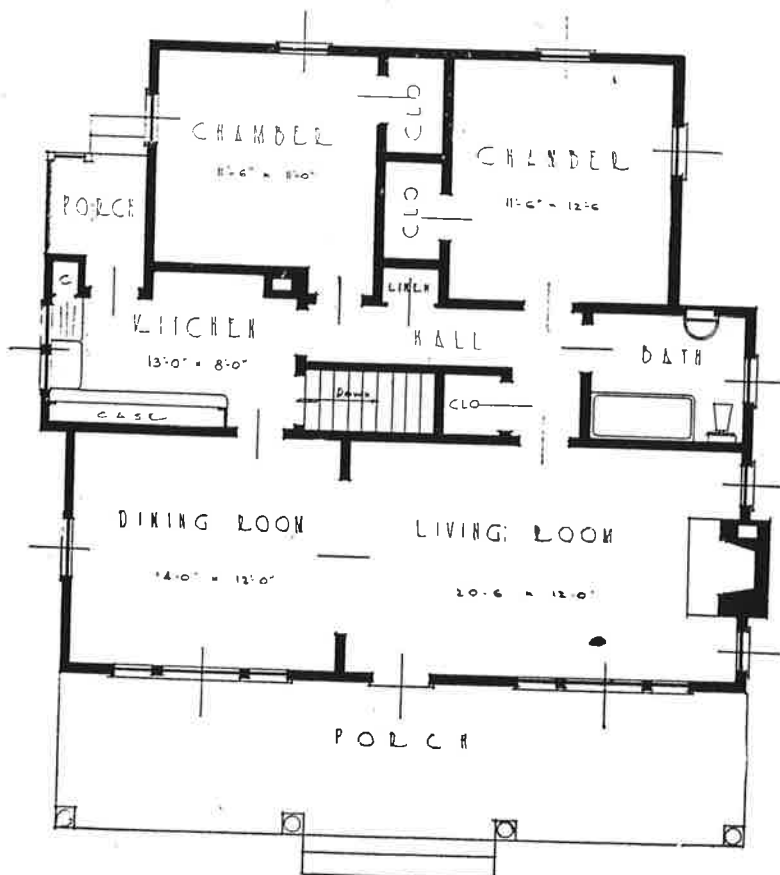
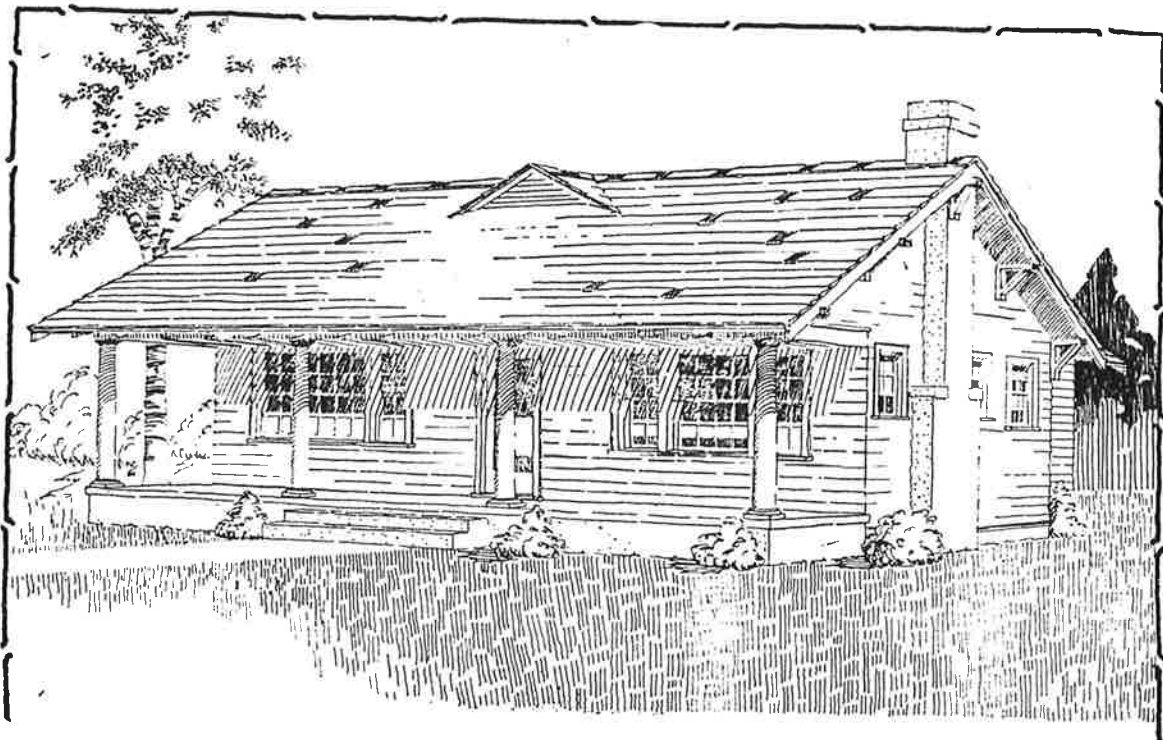
Floor area 1127 sq. feet.



Plan No. 531

Dimensions 32-0x34-0

Floor area 1086 sq. feet.

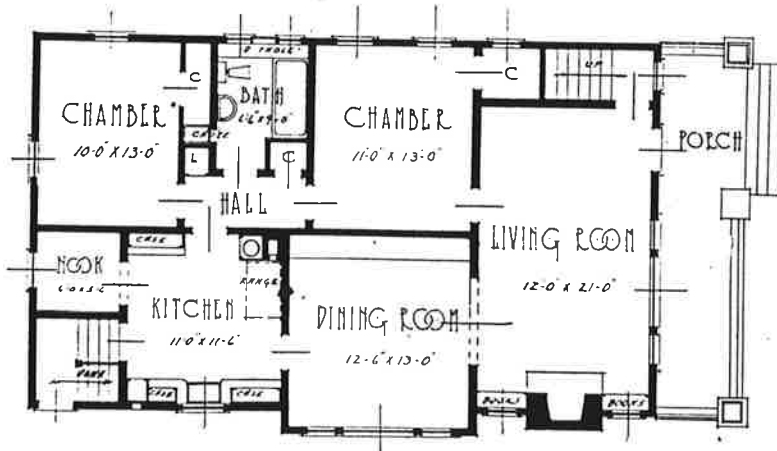
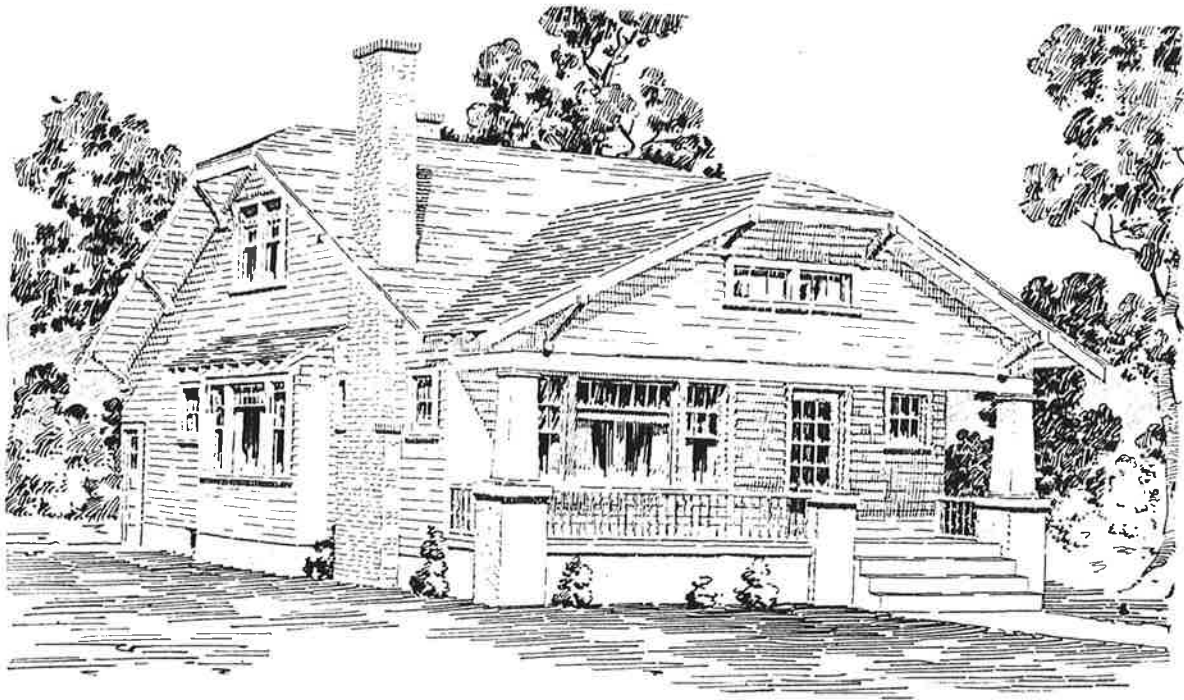


FLOOR PLAN -
PLAN No 533

Plan No. 533

Dimensions 36-0x41-0

Floor area 1422 sq. feet.

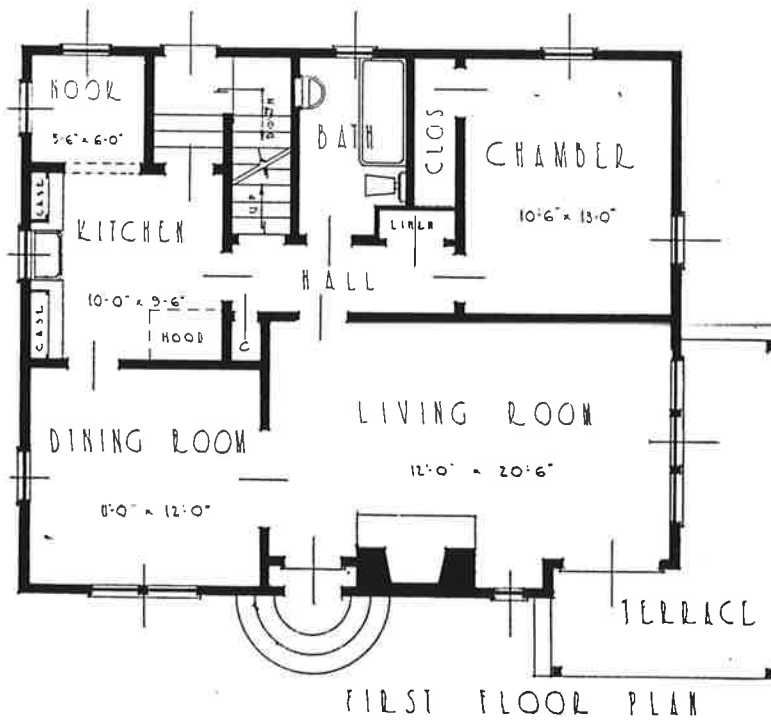
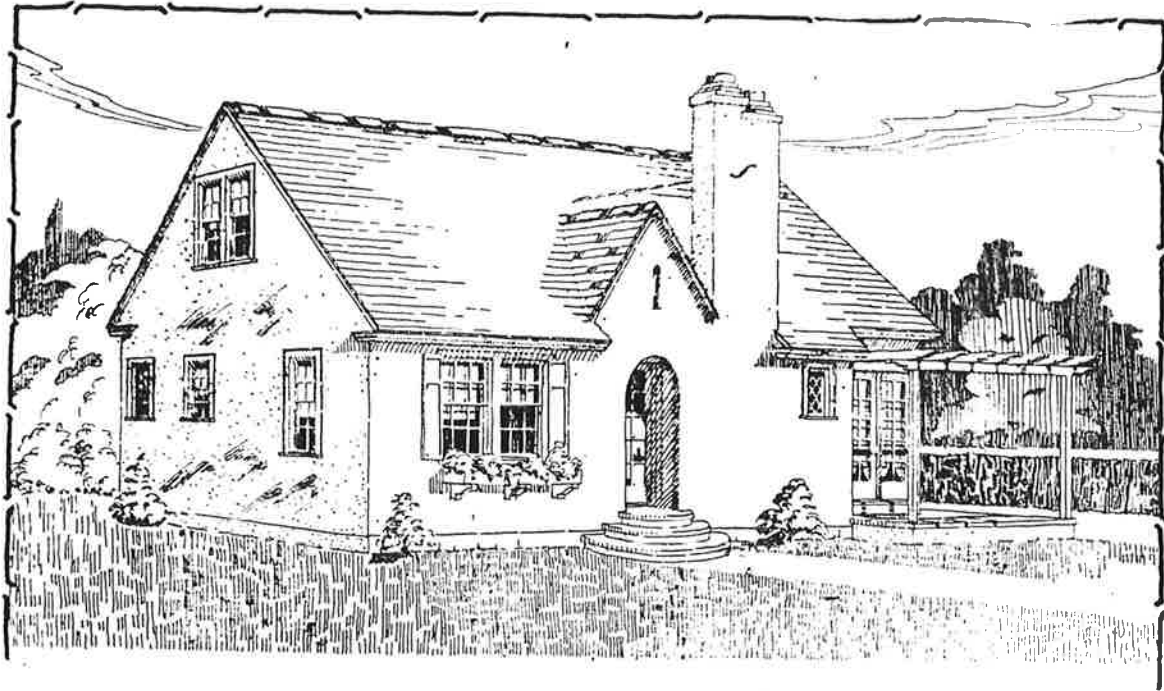


FLOOR PLAN
PLAN NO 534

Plan No. 534

Dimensions 50-0x26-0

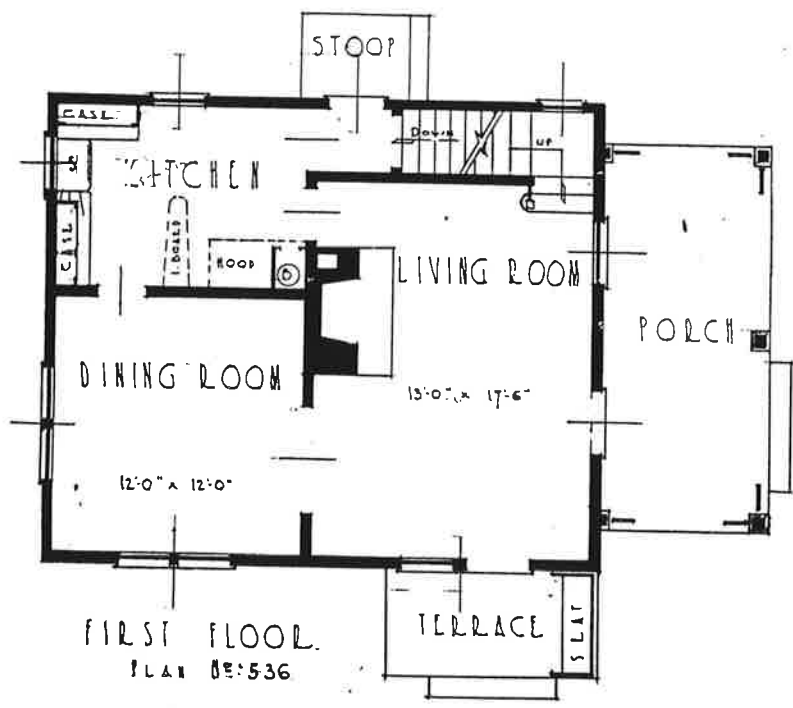
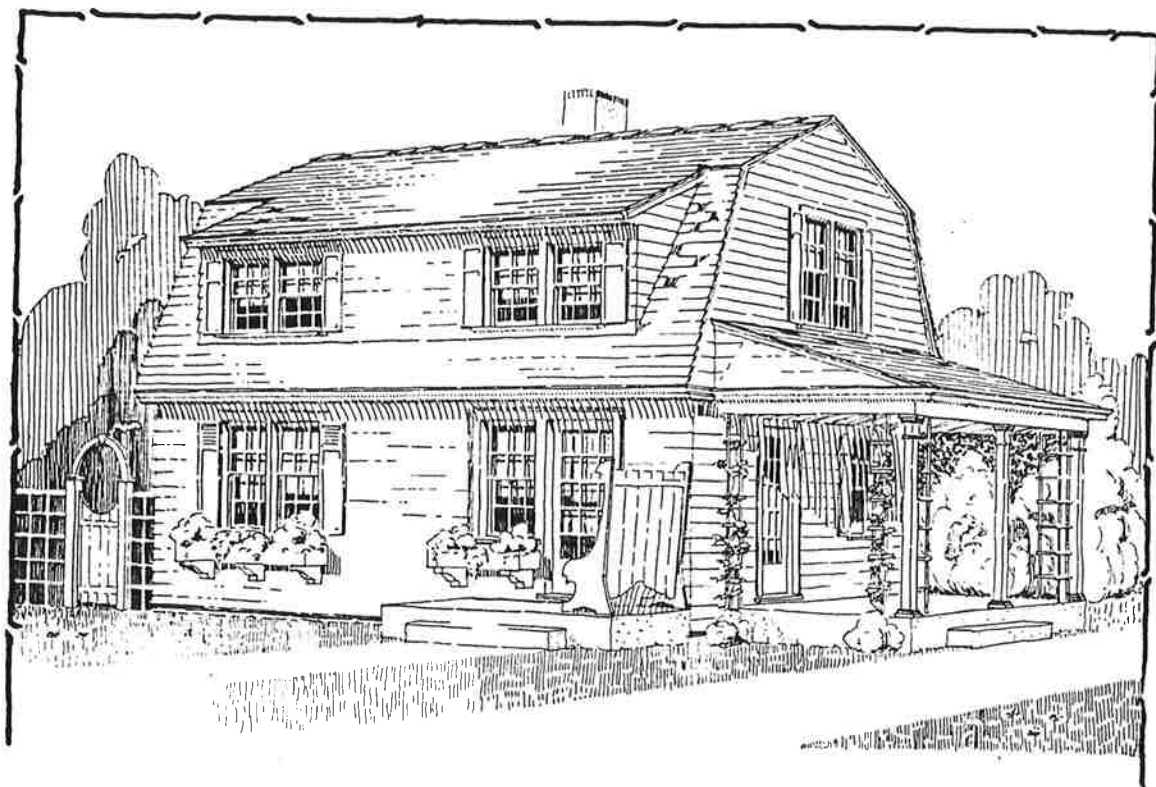
Floor area 1320 sq. feet.



Plan No. 535

Dimensions 34-0x28-0

Floor area 952 sq. feet.

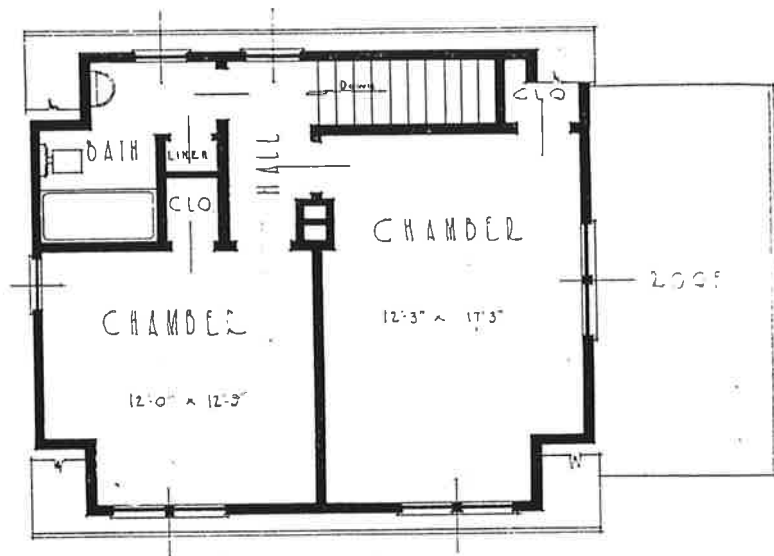


Plan No. 536

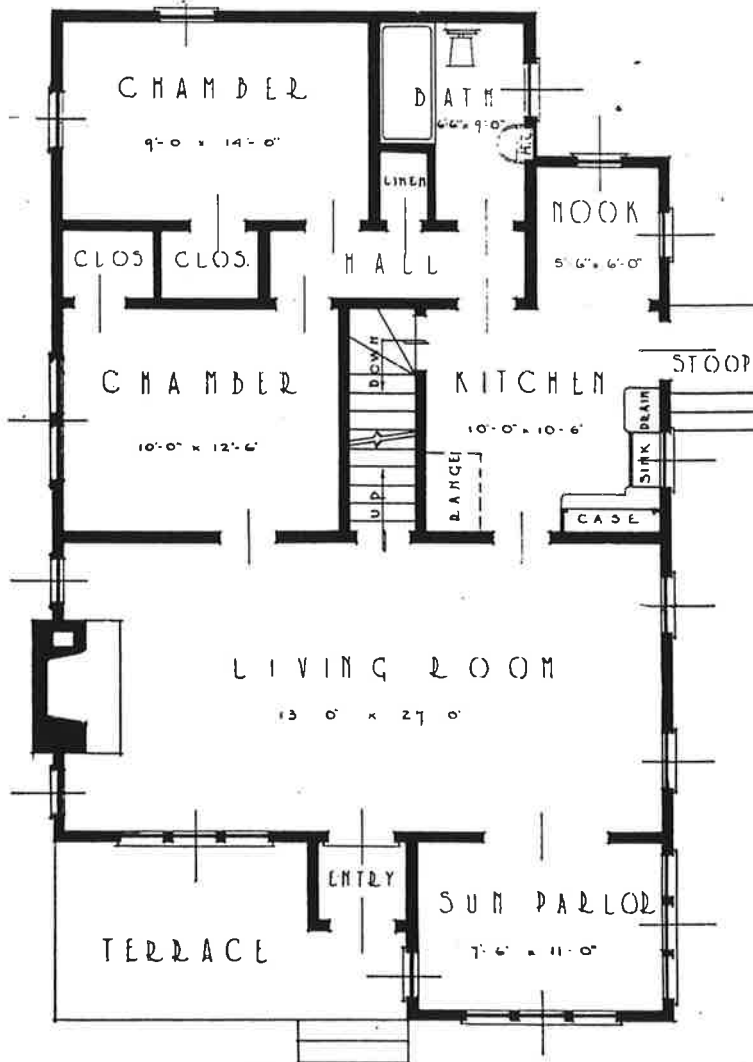
Dimensions 34-6x22-0

Floor area 727 sq. feet.

Second floor plan on next page.



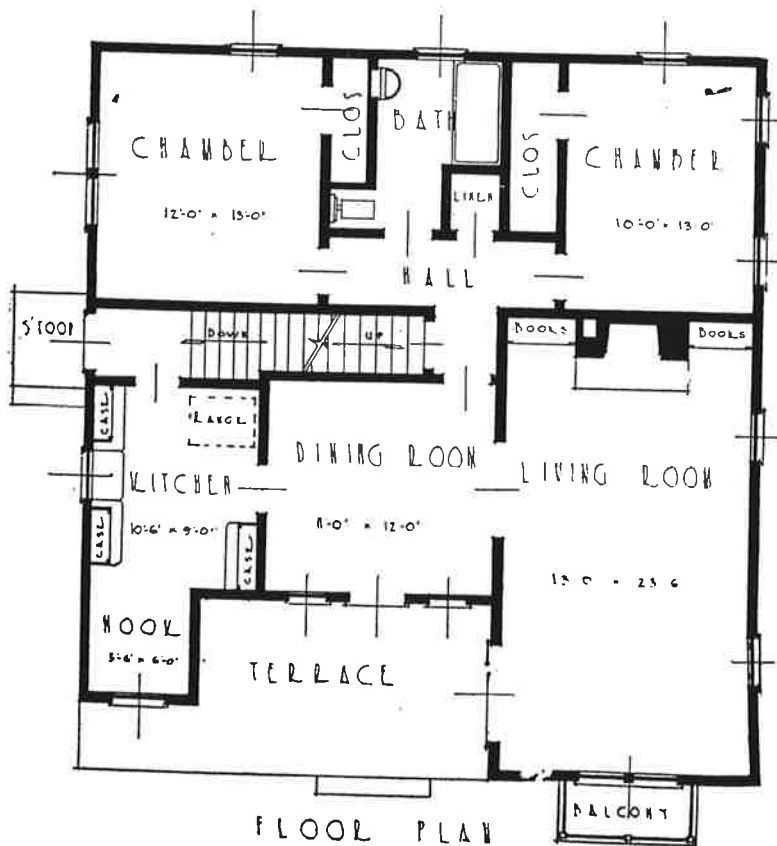
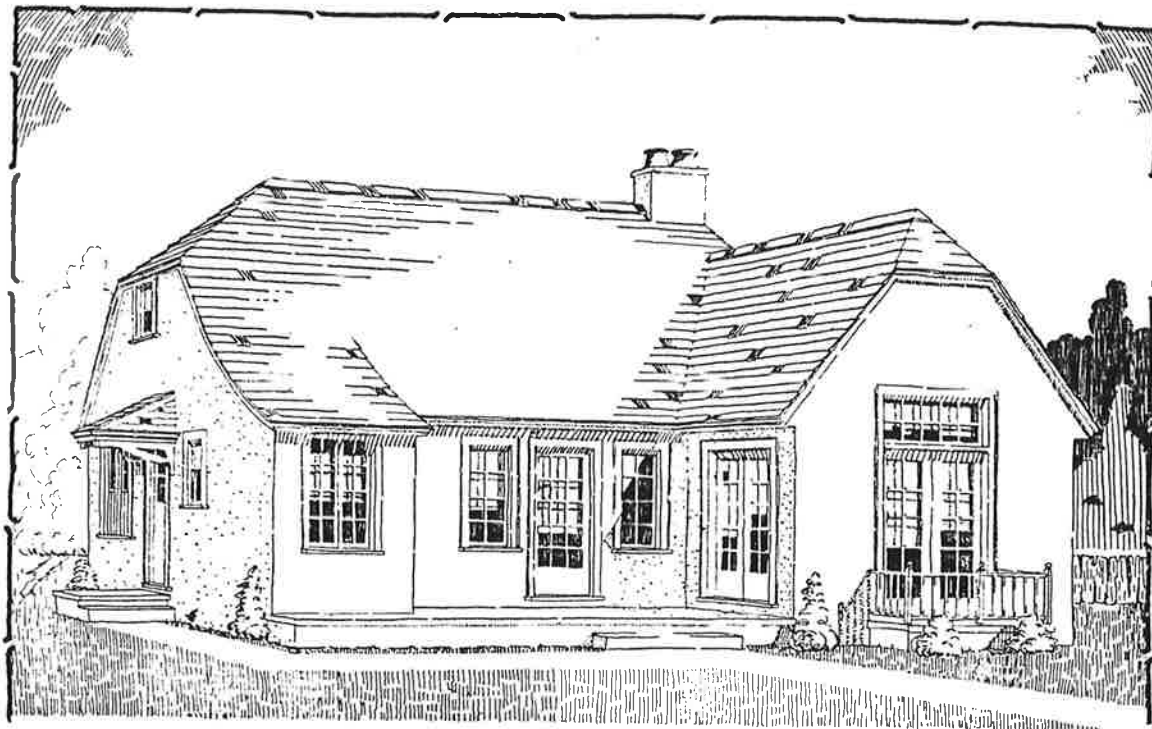
SECOND FLOOR
PLAN No 536.



Plan No. 543

Dimensions 28-0x45-6

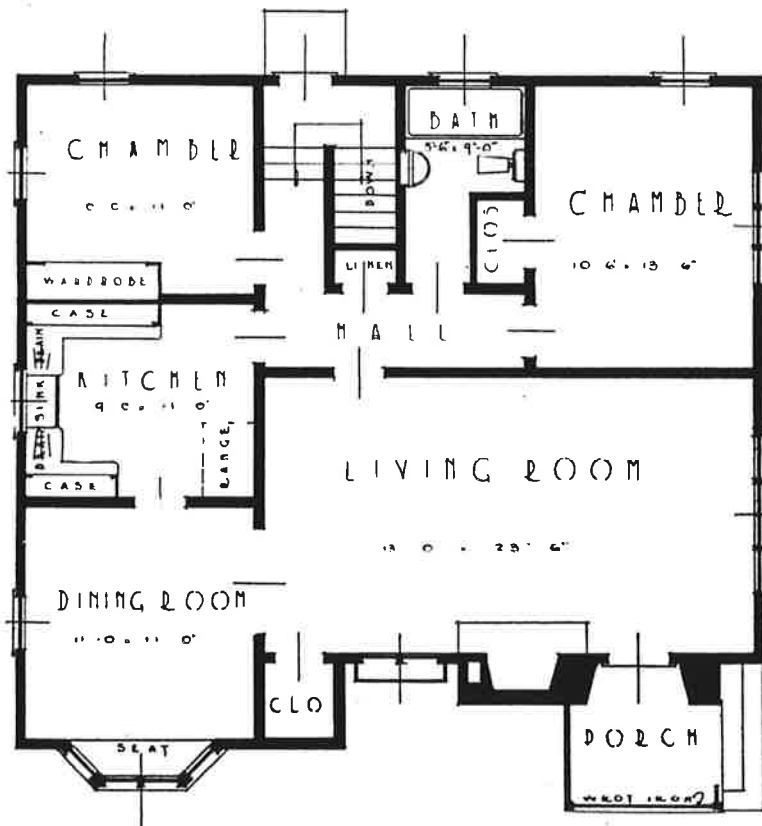
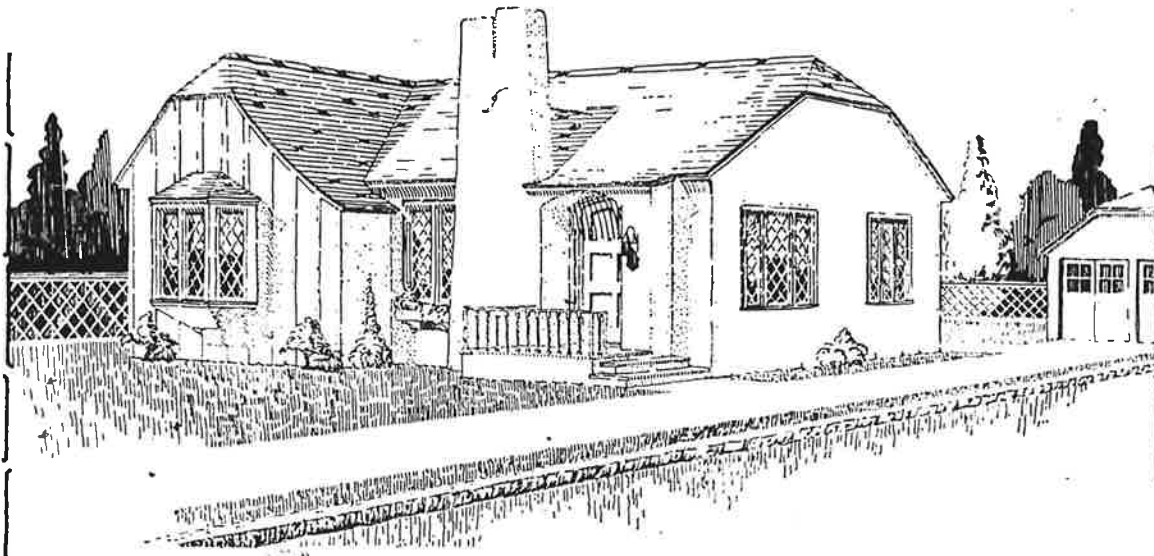
Floor area 1125 sq. feet.



Plan No. 544

Dimensions 36-0x38-0

Floor area 1208 sq. feet.



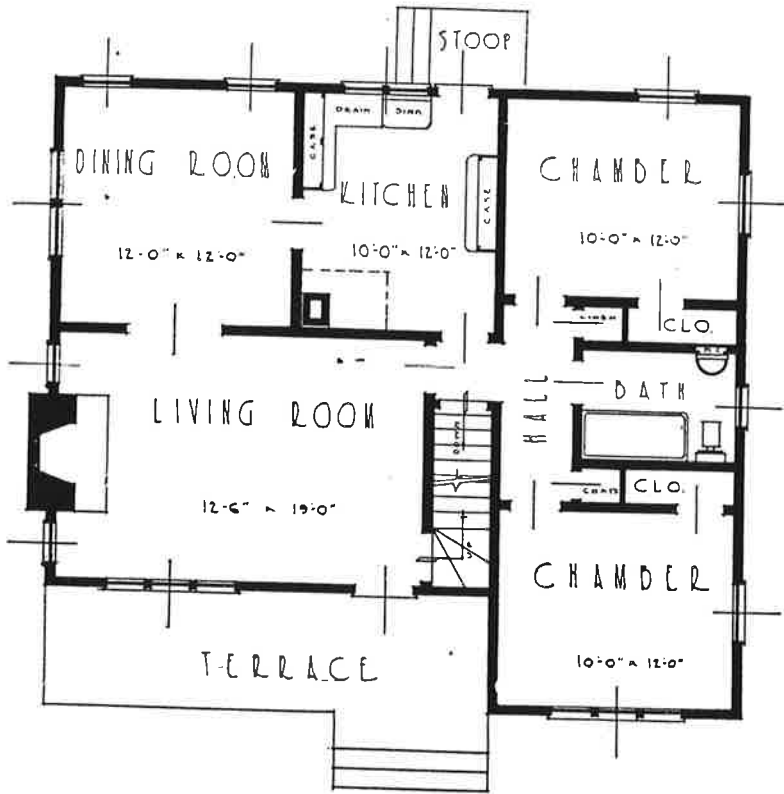
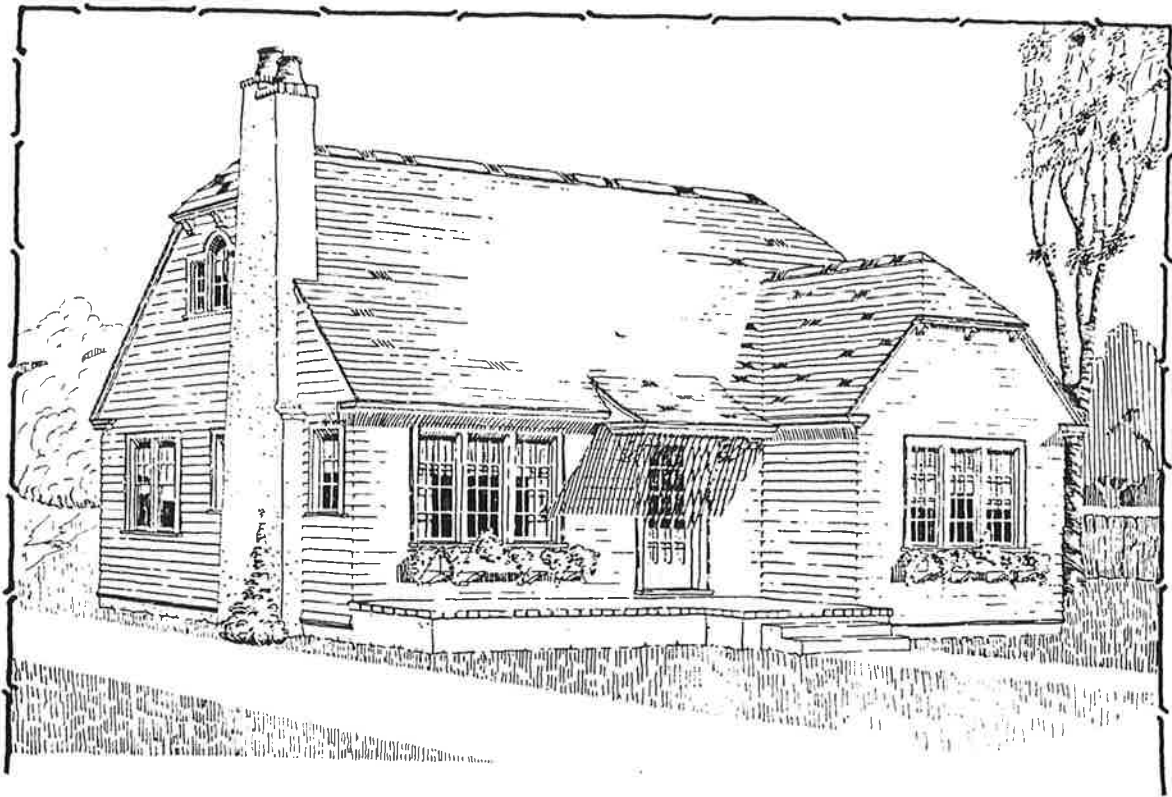
FLOOR PLAN

PLAN NO. 545

Plan No. 545

Dimensions 36-0x32-0

Floor area 1072 sq. feet.



FLOOR PLAN
PLAN NO 546

Plan No. 546

Dimensions 36-0x32-0

Floor area 1014 sq. feet.