

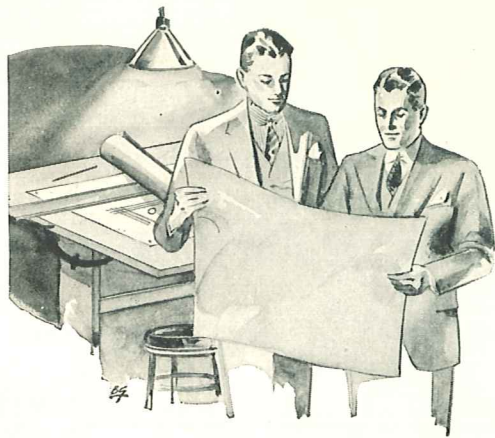
DATA ON  
RUSTLESS METAL  
STORE FRONTS  
BY

ZOURI

Information, details, and illustrations on the complete line of Zouri Store Front construction in both Extruded and Cold-Rolled types.



**WHY ARCHITECTS ARE USING MORE ZOURI STORE FRONT METAL**



It is a significant fact that ZOURI Metal is being used more and more abundantly in the new store fronts—for signs, for entrance doors, as decoration, to secure contrast with other materials, and for its sheer beauty. Unquestionably the life and lustre of alumilited aluminum, bronze, and other modern alloys add much to the appeal of the modern store front.

You can depend on ZOURI for the best metal alloys, for careful fabrication, for attractive finish, and for expert service on any special requirements.

Stock items of the ZOURI line, in both Extruded and Rolled constructions, are shown in this catalog in fairly complete form, but many other stock and special items are furnished. For more information see your local ZOURI distributor, or write ZOURI STORE FRONTS, NILES, MICHIGAN.

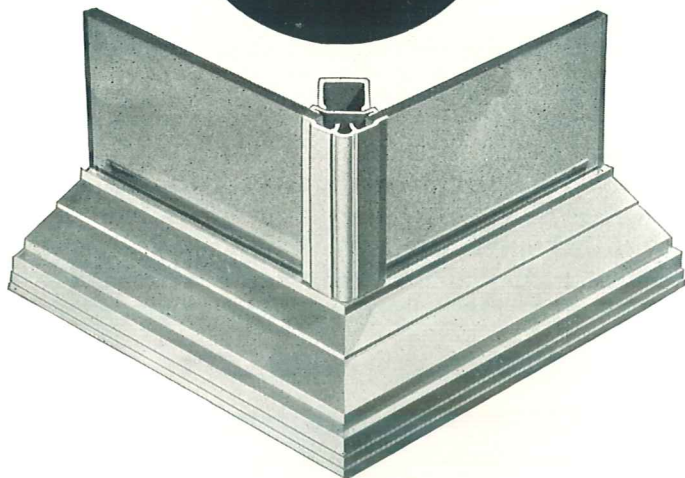
ZOURI furnishes a complete line of extruded and rolled metal construction including: Sash, Bars, Awning and Transom Bars, Jambs, Door Jambs, Grilles, Thresholds, Snap-on Mouldings, Ventilators, Showcase Doors, Metal Paneling, Signs, Pilasters, Entrance Doors, and other Special Metal Work.

**ZOURI STORE FRONTS**

ALUMILITED  
ALUMINUM

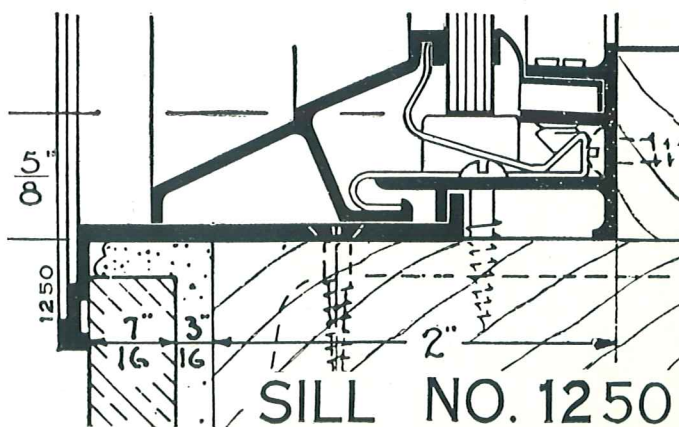
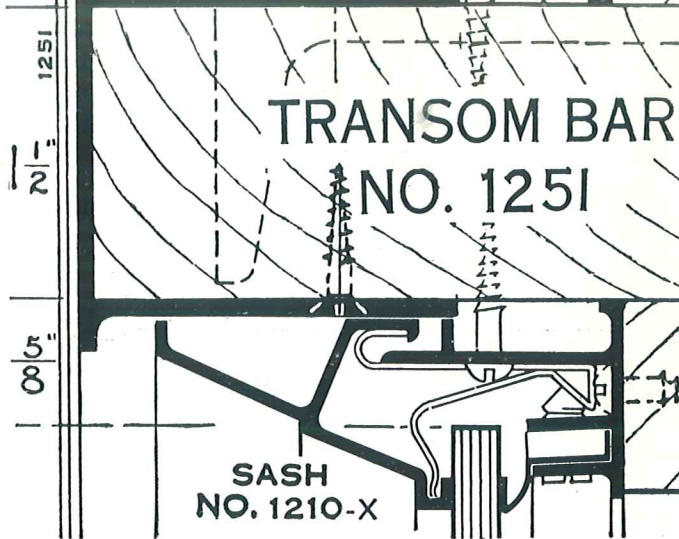
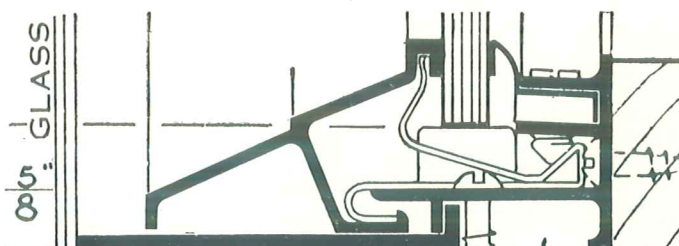
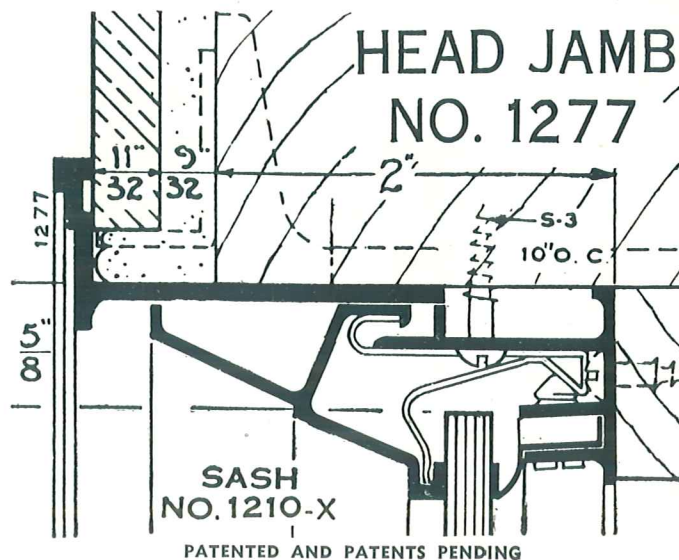
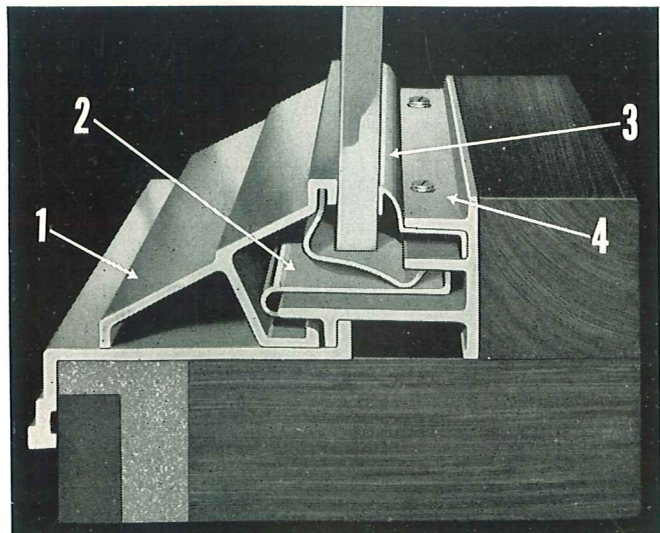


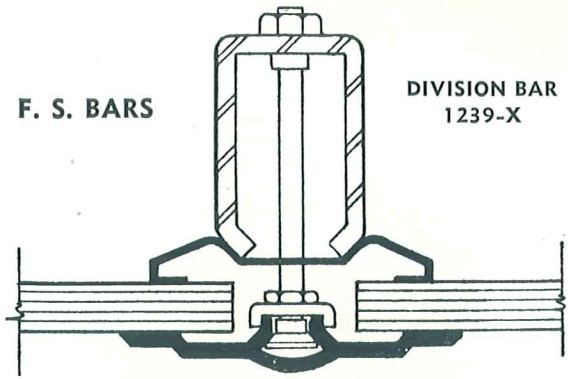
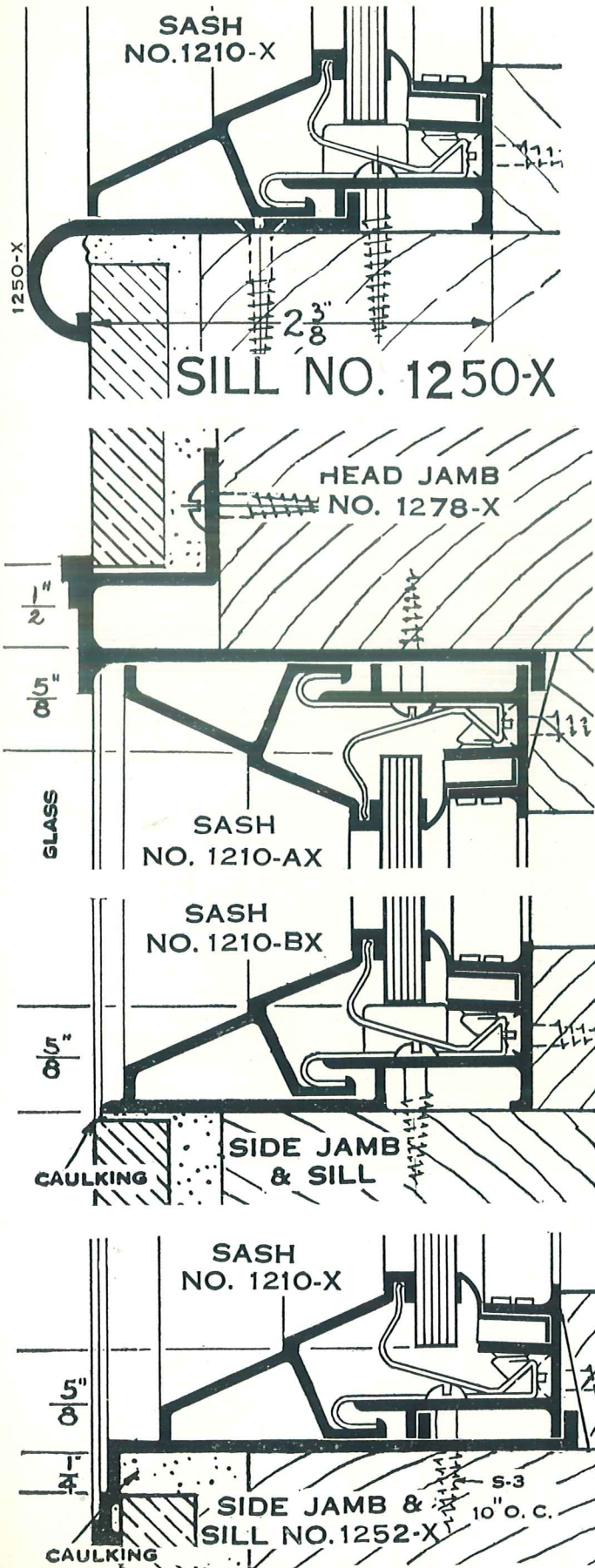
SATIN  
BRONZE



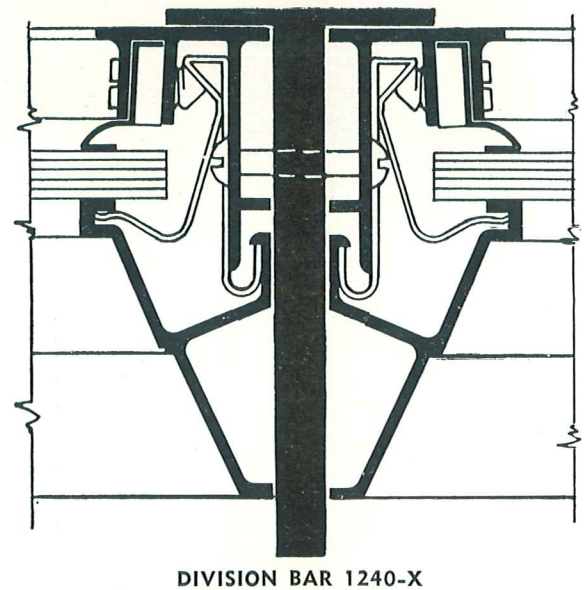
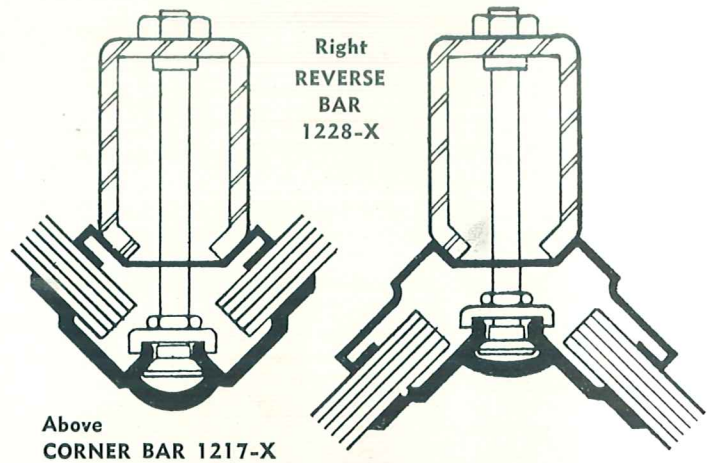
This complete ZOURI line of Extruded Store Front construction is unusually smart and modern. Lines are straight and true. Sash can be installed as a self-supporting unit, or used with wood backing. It can be mitered perfectly, but caps are supplied when specified. Drainage holes are provided in gutter, but ventilation holes made in sash face only when ordered.

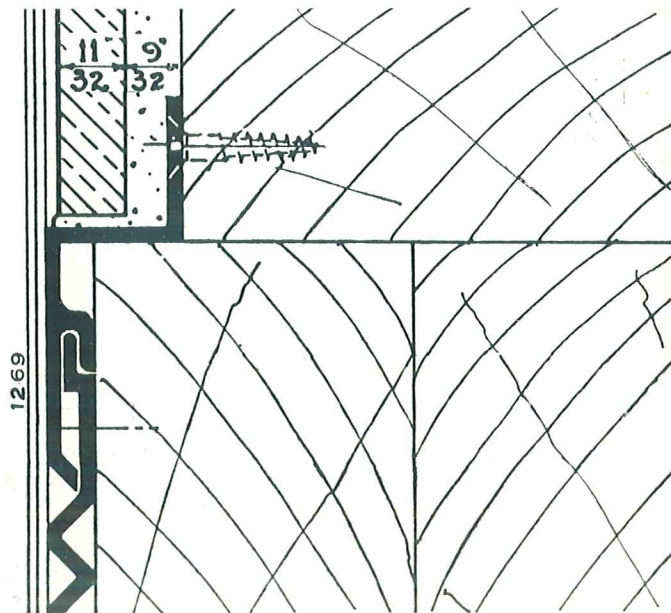
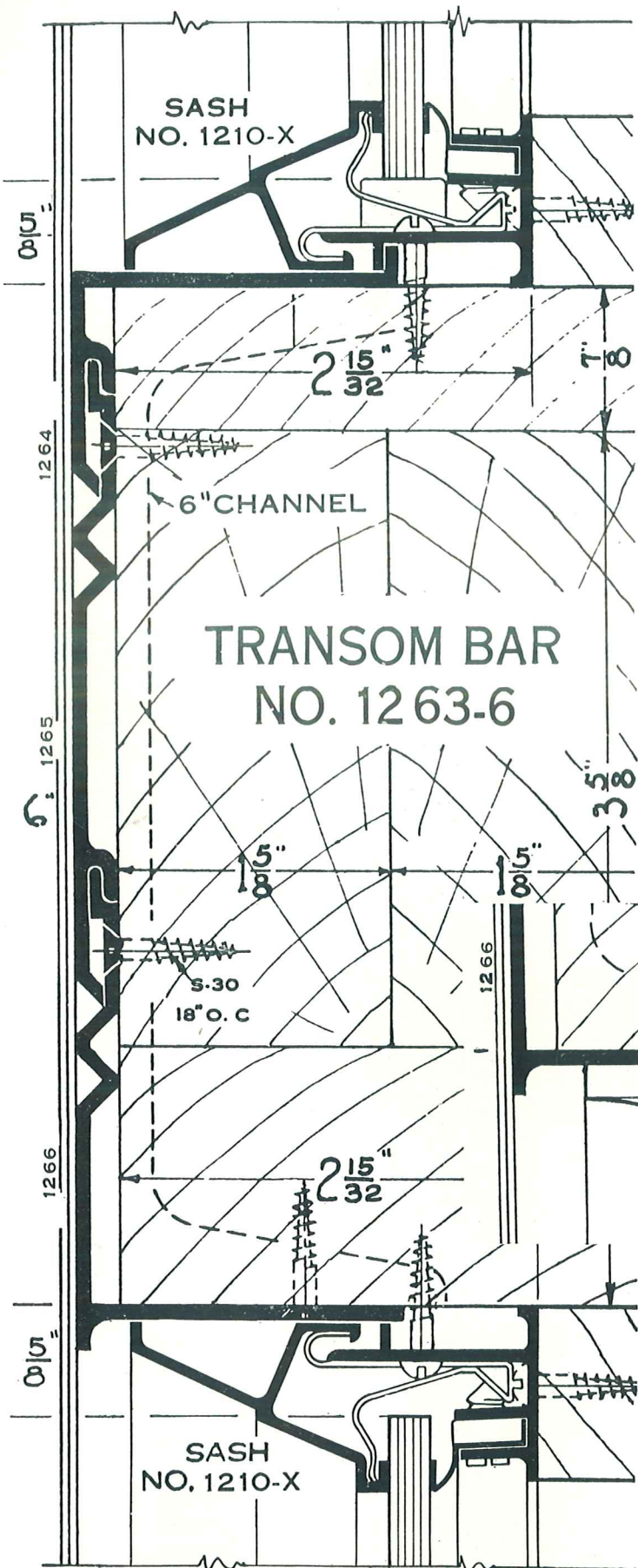
**GLASS PROTECTION.** Like the famous ZOURI Safety Key-Set Rolled Sash, Extruded Sash and Bars provide a full cushion grip on plate glass. This grip is firm and secure, is spread out along face of glass—equally effective on glass varying from  $\frac{3}{8}$ " to  $\frac{5}{8}$ ". Yet it absorbs shocks and strains and provides an absolutely safe and dependable setting. No looseness, rattling, or rigidity. Illustration shows: 1. Attractive face moulding which distributes pressure along face of glass. Removable only from inside. 2. Flexible Spring Mechanism, and 3. Continuous Spring at back which provide cushion grip. 4. Wide, strong gutter.





ZOURI Bars provide a full cushion grip at corners and divisions, complete the framing of the window, and protect customers against possible injury. If the front is to be complete and finished in appearance they should not be eliminated in favor of makeshift substitutes. Extruded Bars are furnished from stock at 90°, 110°, 120°, 135°, and 160° angles, or to order at any angle.

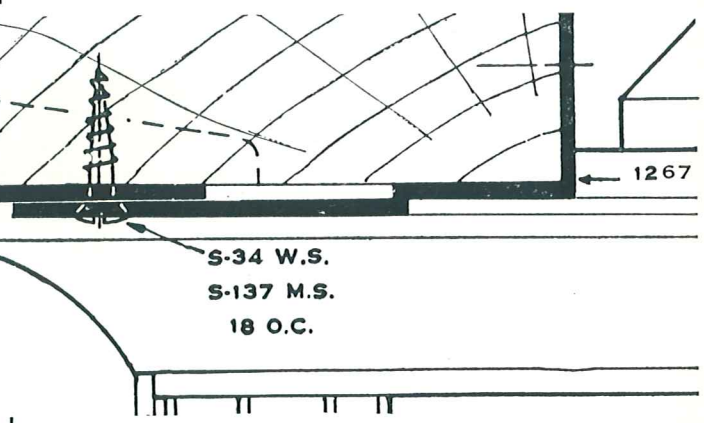




**TRANSOM BAR WITH STRUCTURAL GLASS**  
(AWNING BAR SIMILAR)

**TRANSOM AND AWNING BARS**

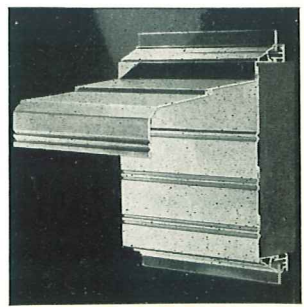
ZOURI TRANSOM BARS are available in 1 1/2", 4", and 6" sizes, and in 9", 12" and larger sizes by use of one or more units of extension moulding 1265. The 1 1/2" Bar is detailed on page 2. The 4" Bar consists of one moulding, similar in appearance to the effect produced by the 6" Bar at left.

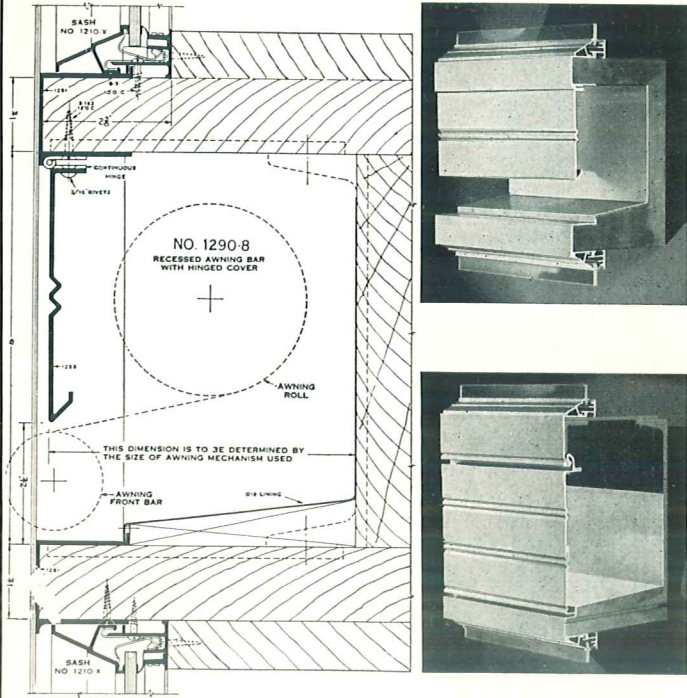


**TRANSOM BAR OVER ENTRANCE**

ZOURI AWNING BARS are the last word in awning bar construction and beauty. They include Concealed and Recessed types which keep the awning roll out of sight. (detailed on page 5. Hood type is also effective.

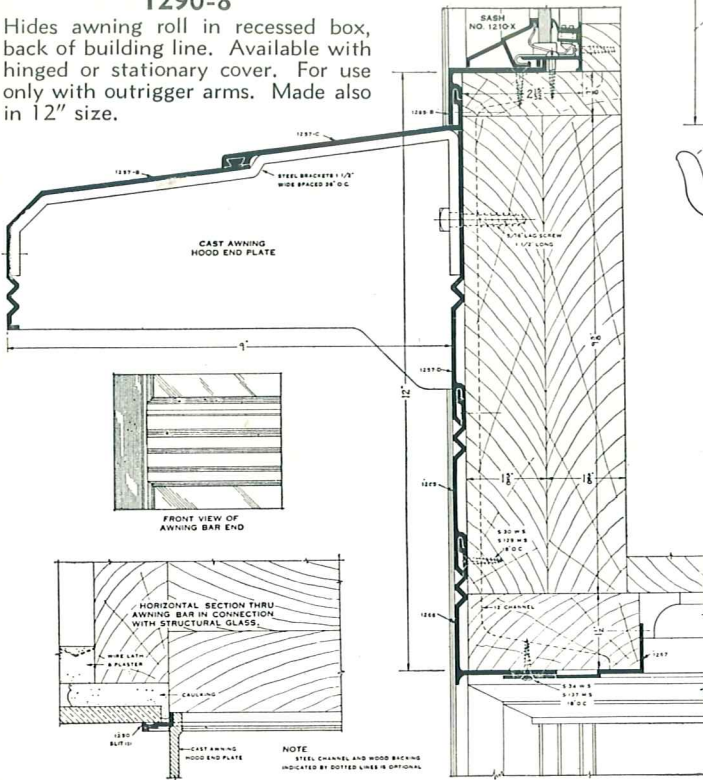
**HOOD TYPE AWNING BAR**





**RECESSED AWNING BAR 1290-8**

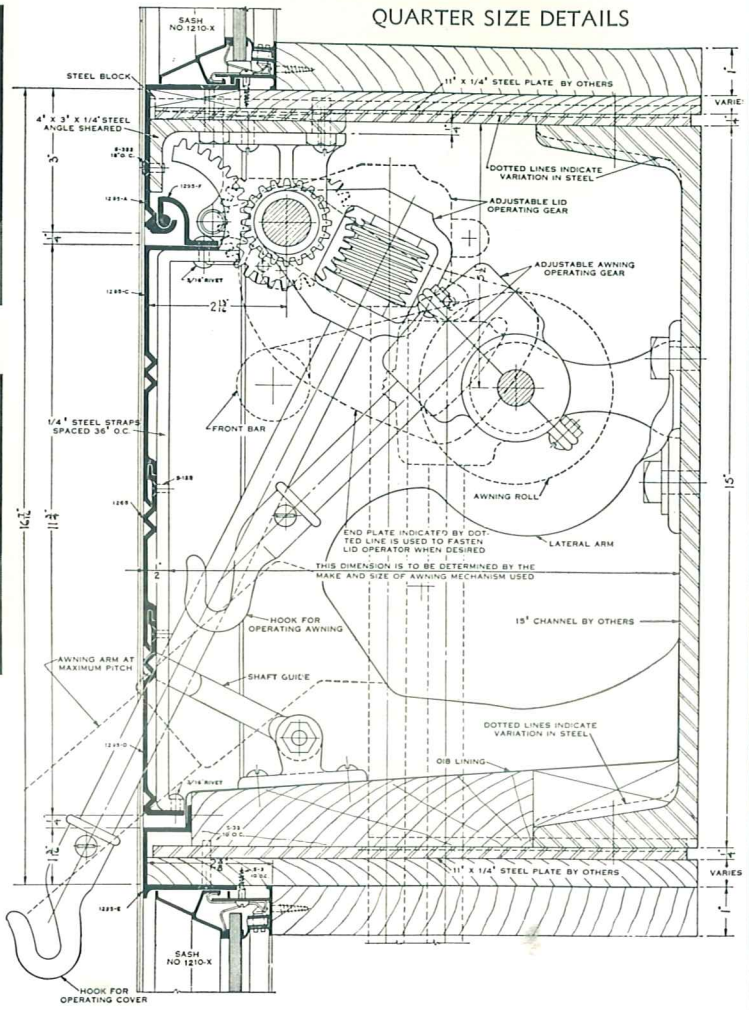
Hides awning roll in recessed box, back of building line. Available with hinged or stationary cover. For use only with outrigger arms. Made also in 12" size.



**HOOD AWNING BAR 1257**

This is a very distinctive hood type awning bar, and has proved effective in use. For either lateral or outrigger arms.

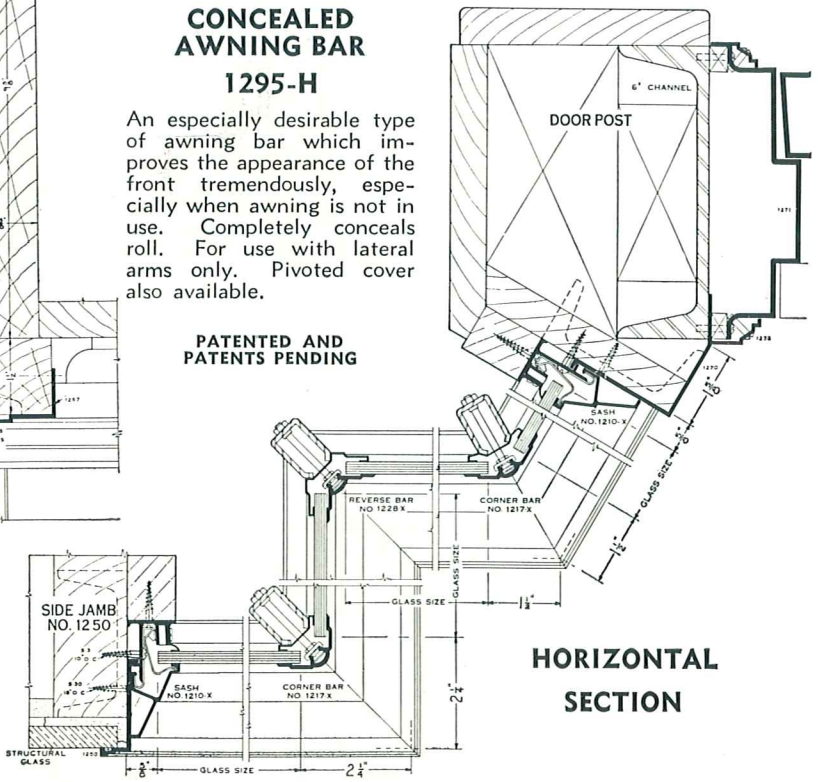
Details of several additional DOOR JAMB MOULDINGS will be sent on request.



**CONCEALED AWNING BAR 1295-H**

An especially desirable type of awning bar which improves the appearance of the front tremendously, especially when awning is not in use. Completely conceals roll. For use with lateral arms only. Pivoted cover also available.

PATENTED AND PATENTS PENDING

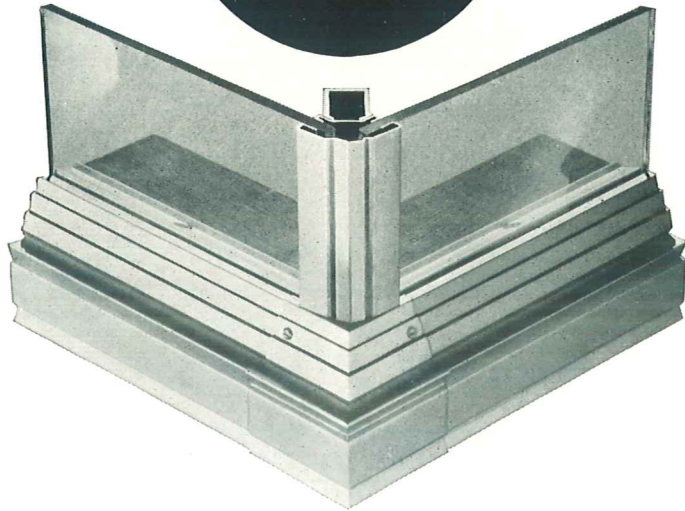


**HORIZONTAL SECTION**

ALUMILITED  
ALUMINUM



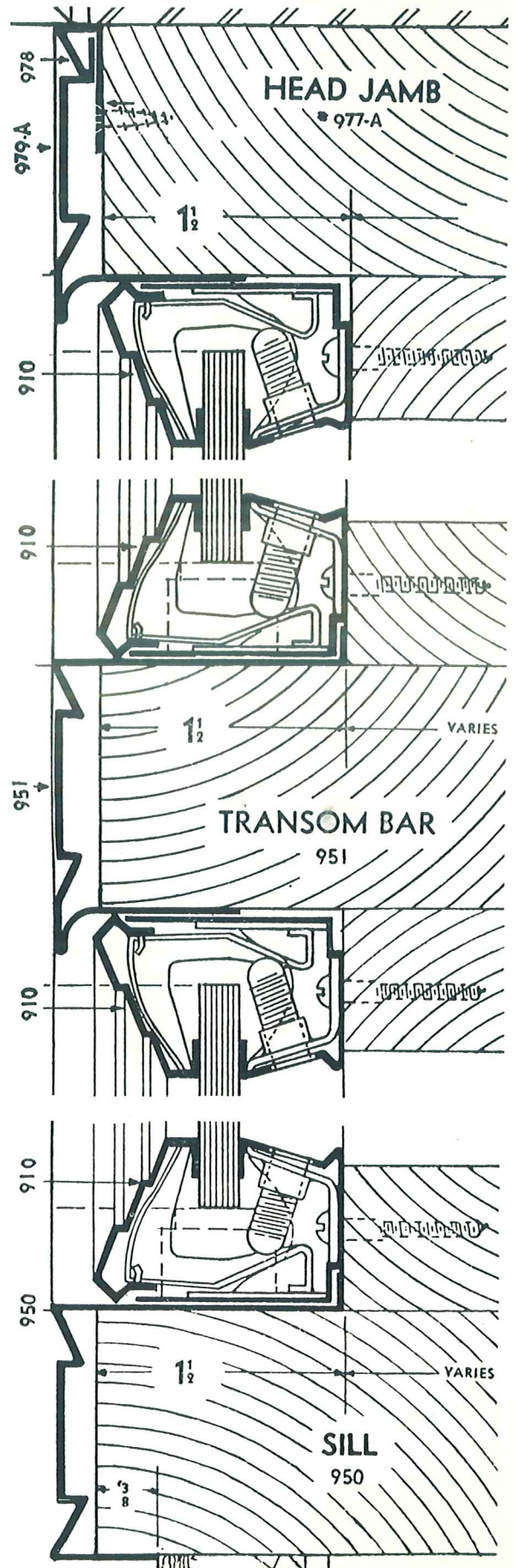
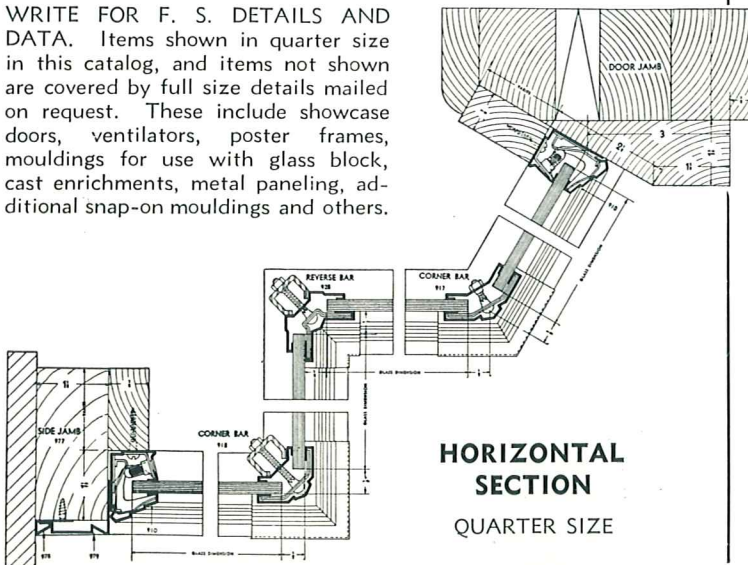
BRONZE  
STAINLESS  
STEEL

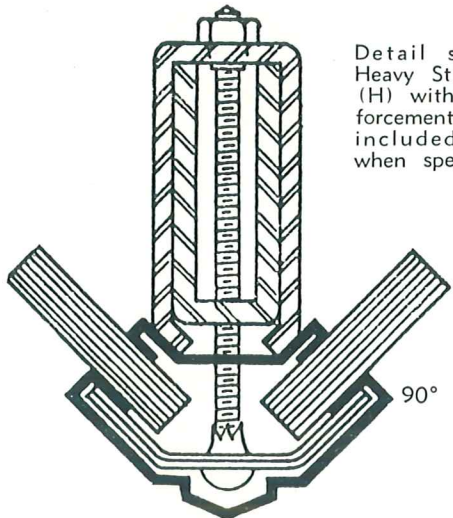


The complete ZOURI cold-rolled store front construction is well-known for its modern, attractive design, for its acutely sharp lines and truly flat surfaces. Carried in stock in alumilited aluminum, satin finish aluminum, bronze and stainless steel. Polished, statuary and other finishes are available.

The famous ZOURI SAFETY KEY-SET SASH provides a full, evenly-distributed, cushion grip on plate glass, regardless of variations in thickness. Specially formed Spring Mechanism draws face moulding back in true alignment and holds glass in a strong, dependable grip. At the same time, ample flexibility is present to allow for movement of glass, due to vibration, pressure, or possible swelling, or twisting of wood framing. No screw-heads appear on face.

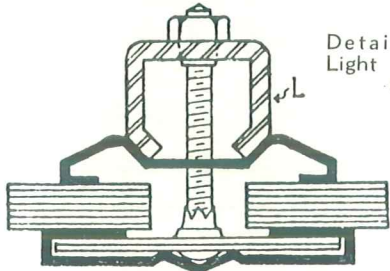
WRITE FOR F. S. DETAILS AND DATA. Items shown in quarter size in this catalog, and items not shown are covered by full size details mailed on request. These include showcase doors, ventilators, poster frames, mouldings for use with glass block, cast enrichments, metal paneling, additional snap-on mouldings and others.





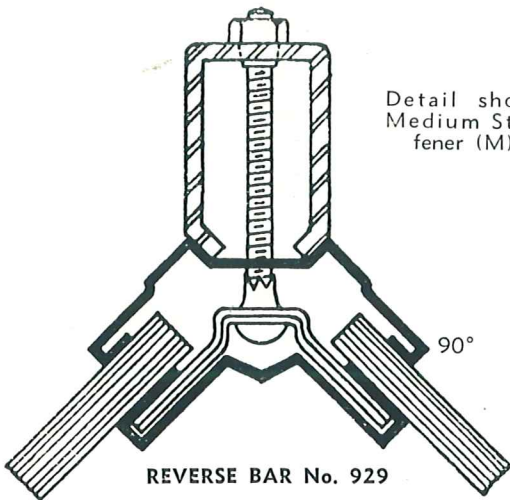
Detail shows Heavy Stiffener (H) with reinforcement X— included only when specified.

CORNER BAR No. 921



Detail shows Light Stiffener (L)

DIVISION BAR No. 938

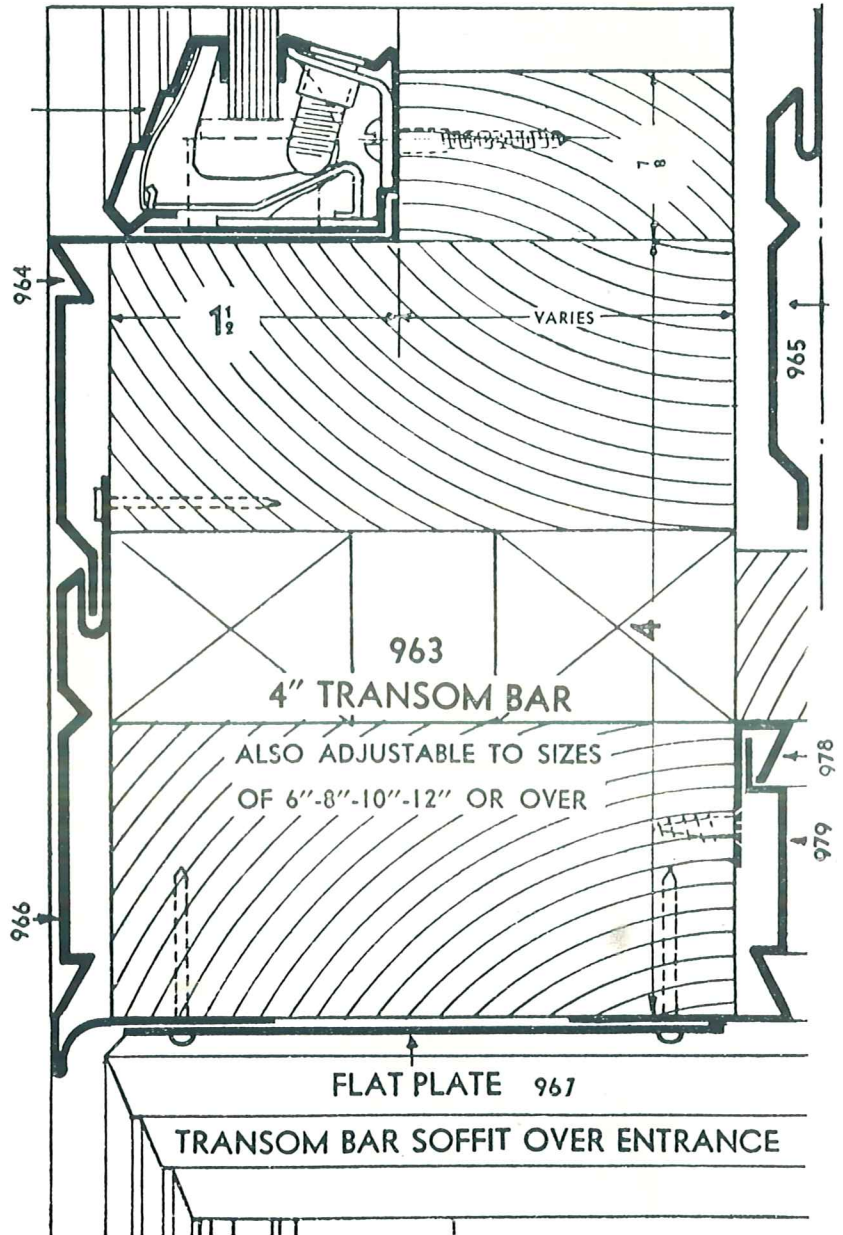
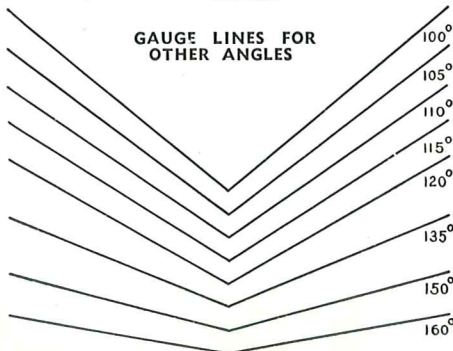


Detail shows Medium Stiffener (M)

REVERSE BAR No. 929

**BARS**

GAUGE LINES FOR OTHER ANGLES



F. S. TRANSOM BAR

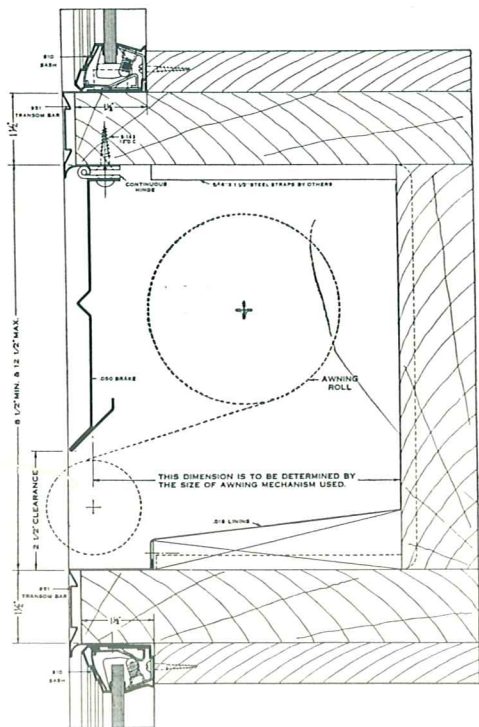
**TABLE OF BARS**

In order to facilitate the selection of proper bars we submit a table which we believe will be of great assistance in ordering. We are also submitting a formula as an explanation of this table.

STIFFENER	A	B	C
Light . . . . .	60 in.	100 sq. ft.	55 sq. ft.
Medium . . . . .	78 in.	130 sq. ft.	70 sq. ft.
Heavy . . . . .	96 in.	140 sq. ft.	72 sq. ft.
Heavy-X . . . . .	108 in.	144 sq. ft.	80 sq. ft.

FORMULA—We recommend all of our bars as listed where the glass height does not exceed that given in column (A) and the combined area of the 2 plates is less than the square footage listed in column (B). The area of 1 plate must not exceed that listed in column (C).



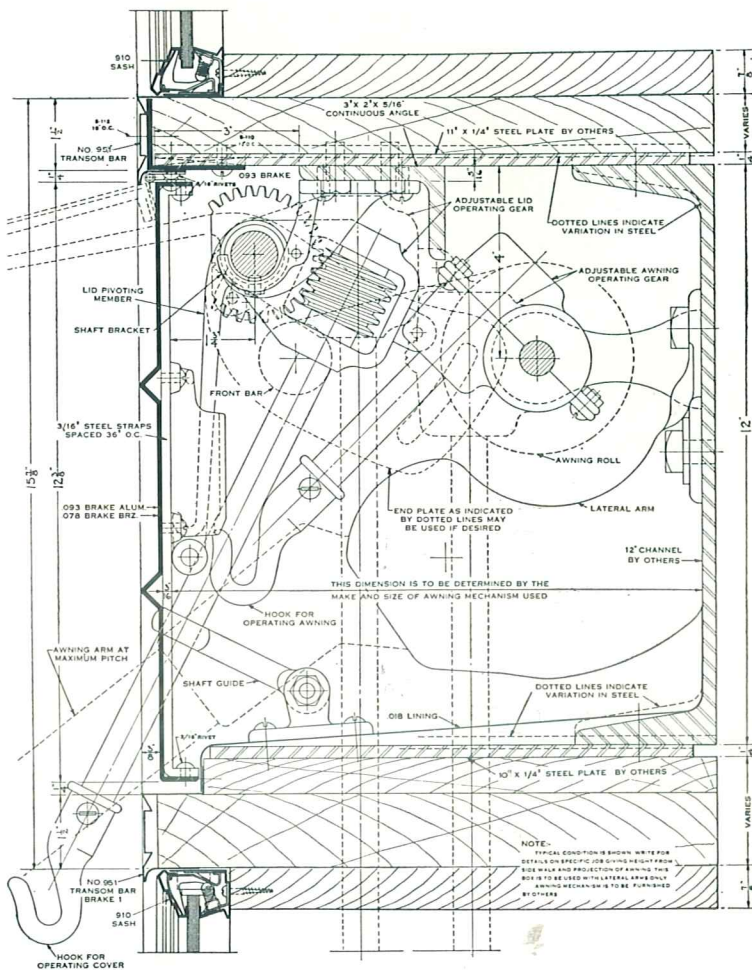


**RECESSED AWNING BAR  
No. 958**

This modern awning bar hides awning roll in a recessed box. Furnished with hinged or stationary cover. For use with outrigger arms only.

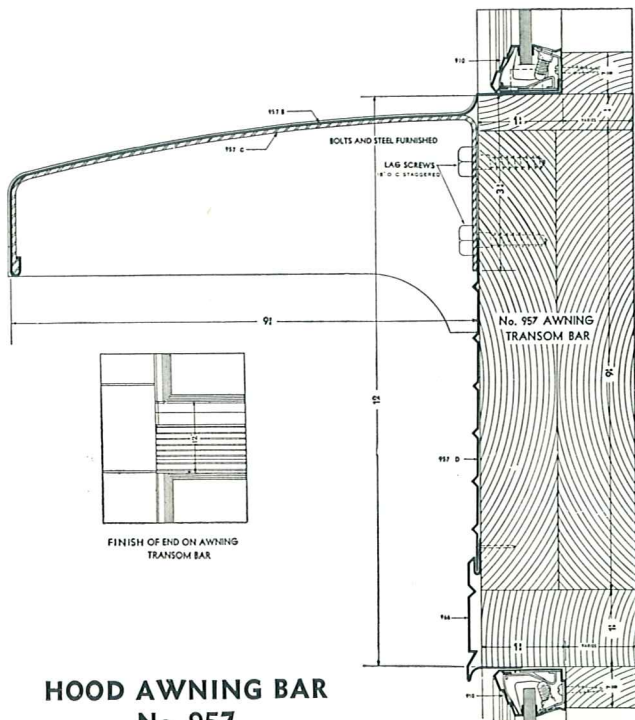
QUARTER  
SIZE  
DETAILS

PATENTED  
AND  
PATENTS  
PENDING



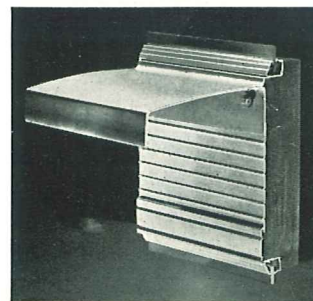
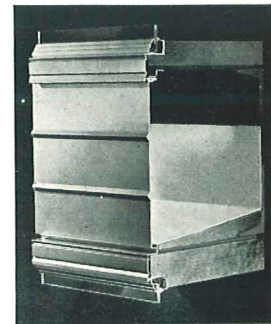
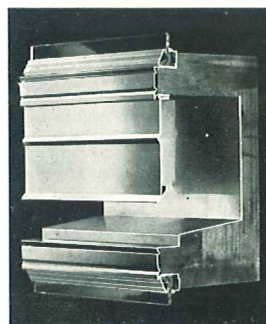
**CONCEALED AWNING BAR No. 92-H**

Protects awning roll when not in use, and completely conceals it from view. Also furnished with pivoted cover. For use with lateral arms only. Awning mechanism by others.

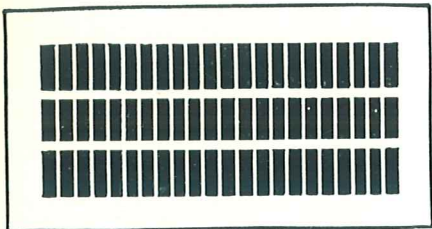


**HOOD AWNING BAR  
No. 957**

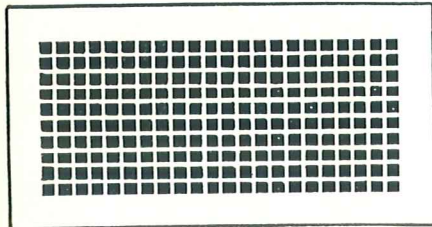
Designed in simple lines to conform with any type of front, this awning bar is easy to install and affords good protection. Either outrigger or lateral arms can be used.



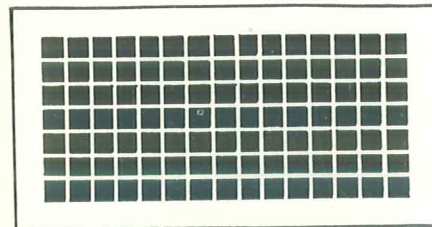
These up-to-date awning bars solve one of the store front designers most difficult problems. Recessed and Concealed types are widely used because they prevent weatherstained awnings from ruining the appearance of the front.



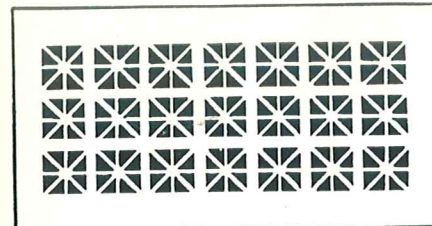
No. 370—Rectangular. Stock sizes 11" x 5", 18" x 9", 24" x 10".



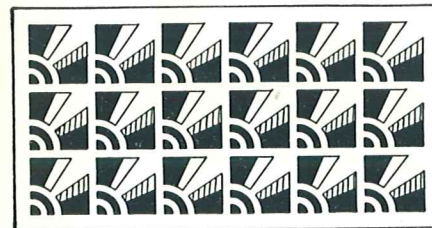
No. 371—Small Square.



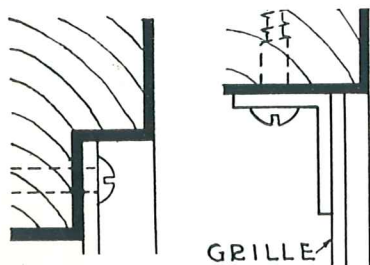
No. 372—Large Square.



No. 374—Union Jack.



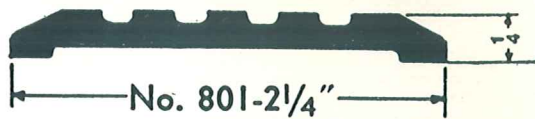
Special Design—Cut or Cast to Architect's Requirements



GRILLE

Stamped and cast grilles furnished in bronze or aluminum, or stainless steel (satin finish or aluminited). Stamped grilles are made in .050 and .109 gauge metal (.050 only in stainless steel).

Thresholds furnished in extruded bronze, with the exception of Numbers 808—4", 809—5", and 810—4 5/8", which come in aluminum only. Kickplates are also available.



No. 801—2 1/4"



No. 802—3"

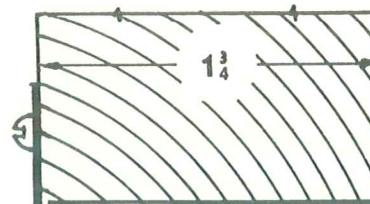


No. 803—4"

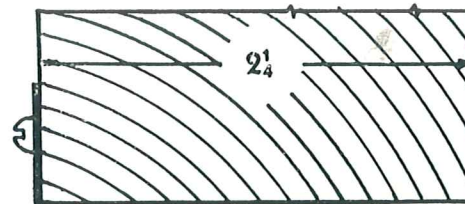


No. 804—5"

No. 805—6" SIMILAR. 1/2" HIGH



No. 806



No. 807

BOTH No. 806 AND No. 807 FURNISHED WITH WEATHERING GUIDE



No. 808—4"



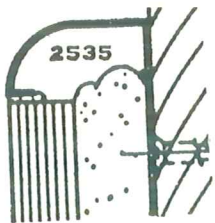
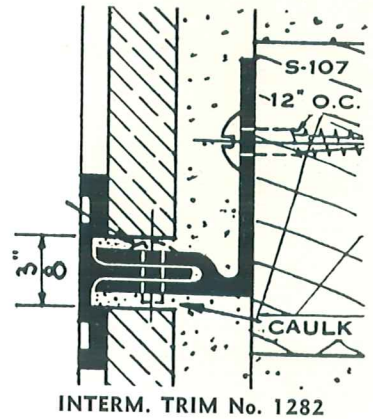
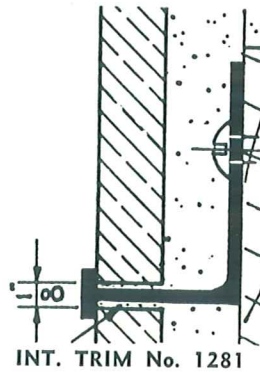
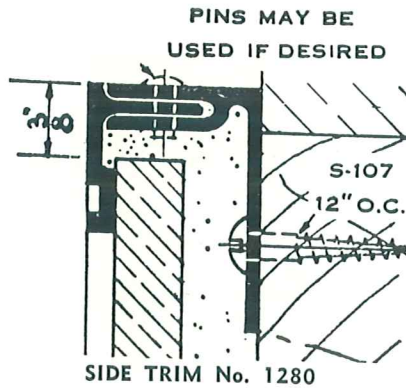
No. 809—5"



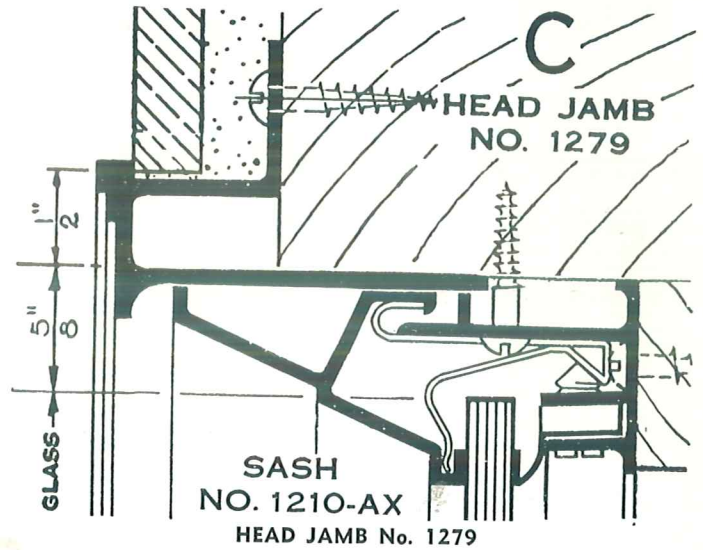
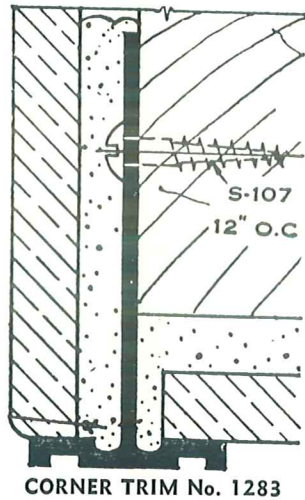
No. 810—4 5/8"

**MOULDINGS**

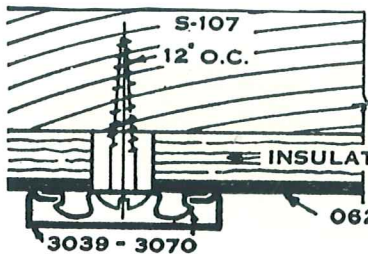
The most widely used ZOURI mouldings are shown on pages 10 to 13, but others are available and new mouldings are frequently added from time to time. If what you need is not shown, write for more information.



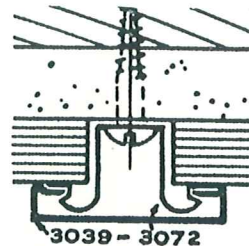
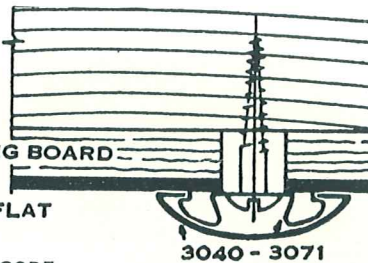
TRIM  
MLDG.



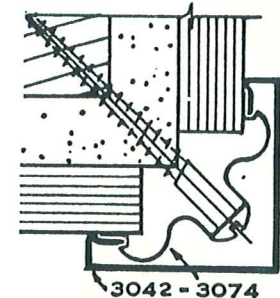
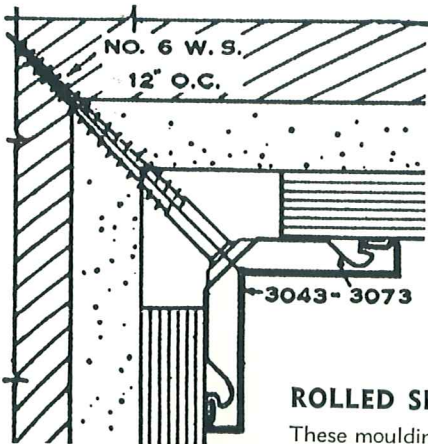
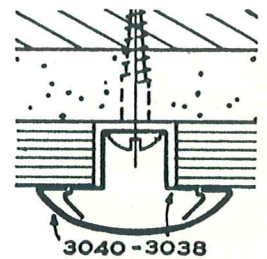
**EXTRUDED MOULDINGS FOR STRUCTURAL GLASS**  
(ALUMINUM AND BRONZE)



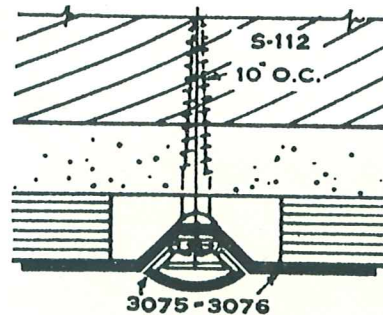
FLUSH CORE



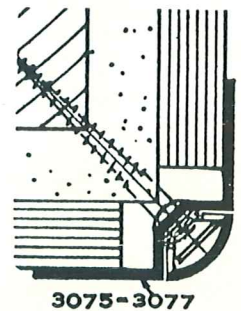
SET-IN CORE



CORNER

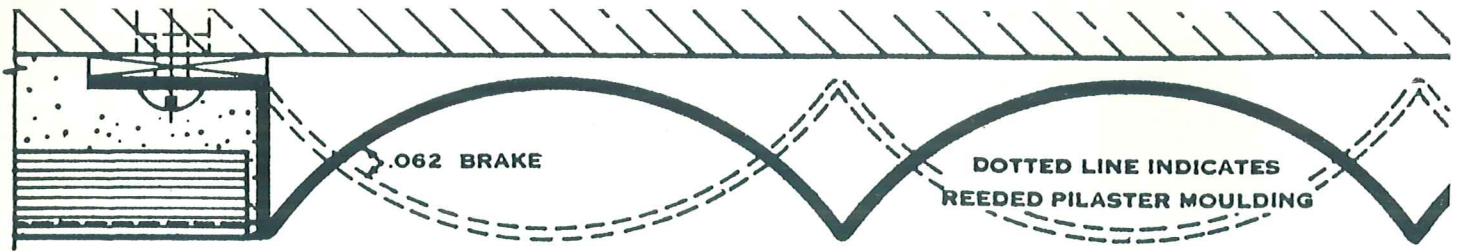


OUTSIDE SETTING TRIM

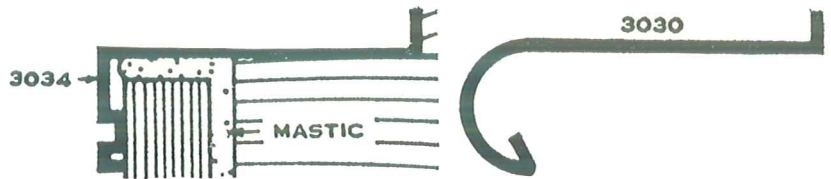
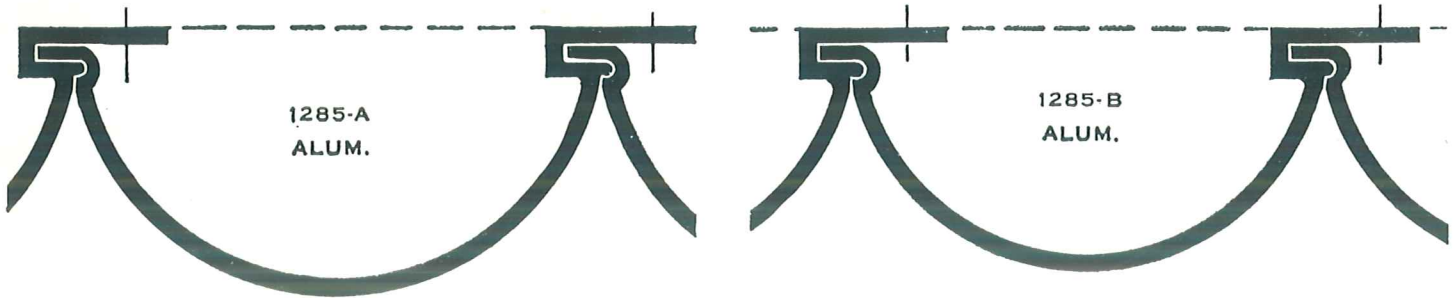


**ROLLED SNAP-ON AND TRIM MOULDINGS (ALUM. BRONZE AND STAINLESS STEEL)**

These mouldings are widely used for store front and interior work. Write for data on additional snap-on mouldings.

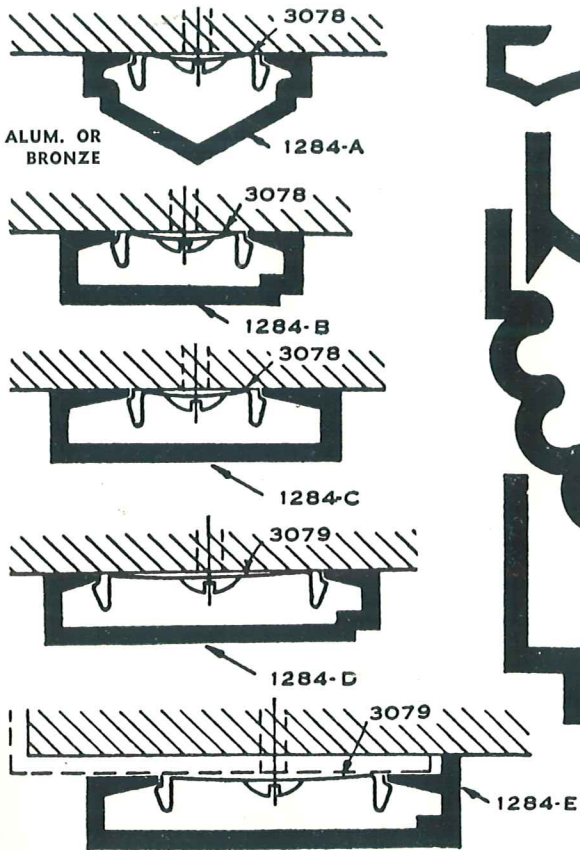


PILASTER MOULDINGS (FLUTES MAY VARY IN SIZE)

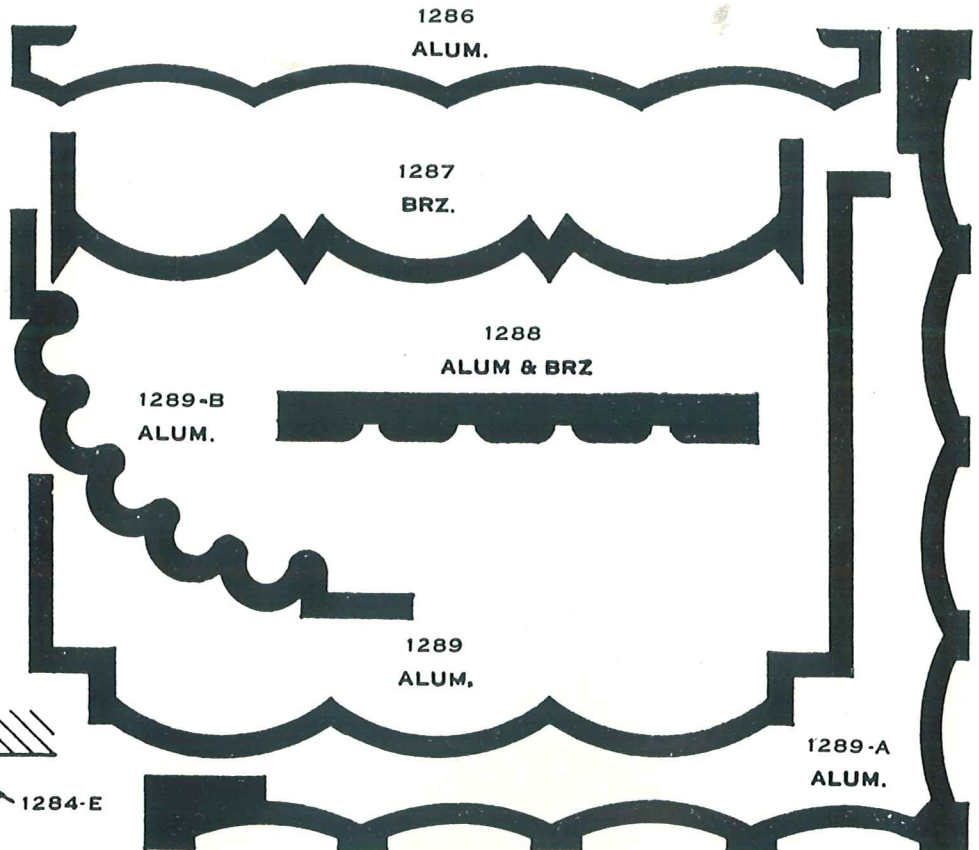


EXTRUDED REED MOULDINGS

ROLLED SILL AND JAMB MOULDINGS

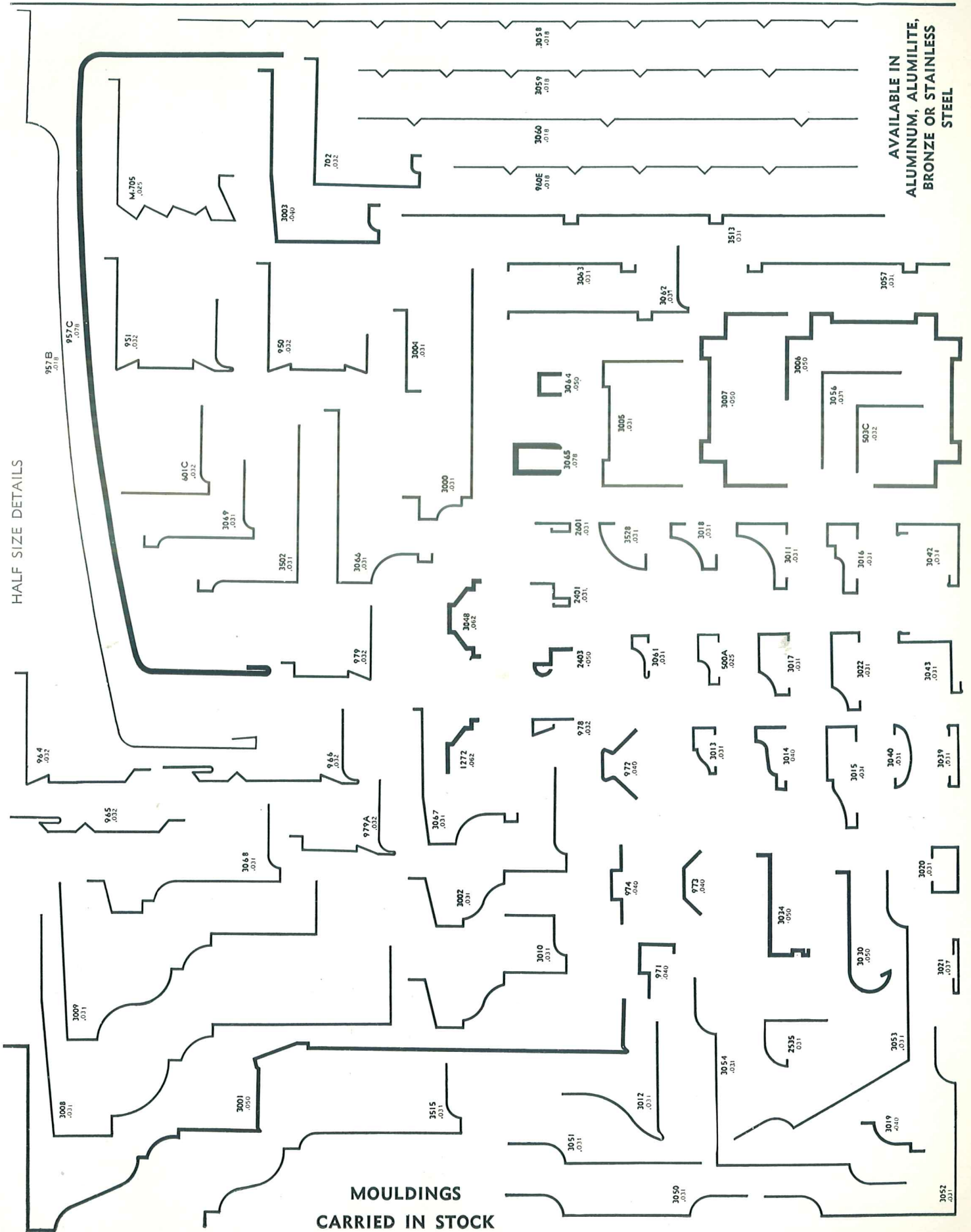


EXTR. SNAP-ON MOULDINGS (Alum. Only)



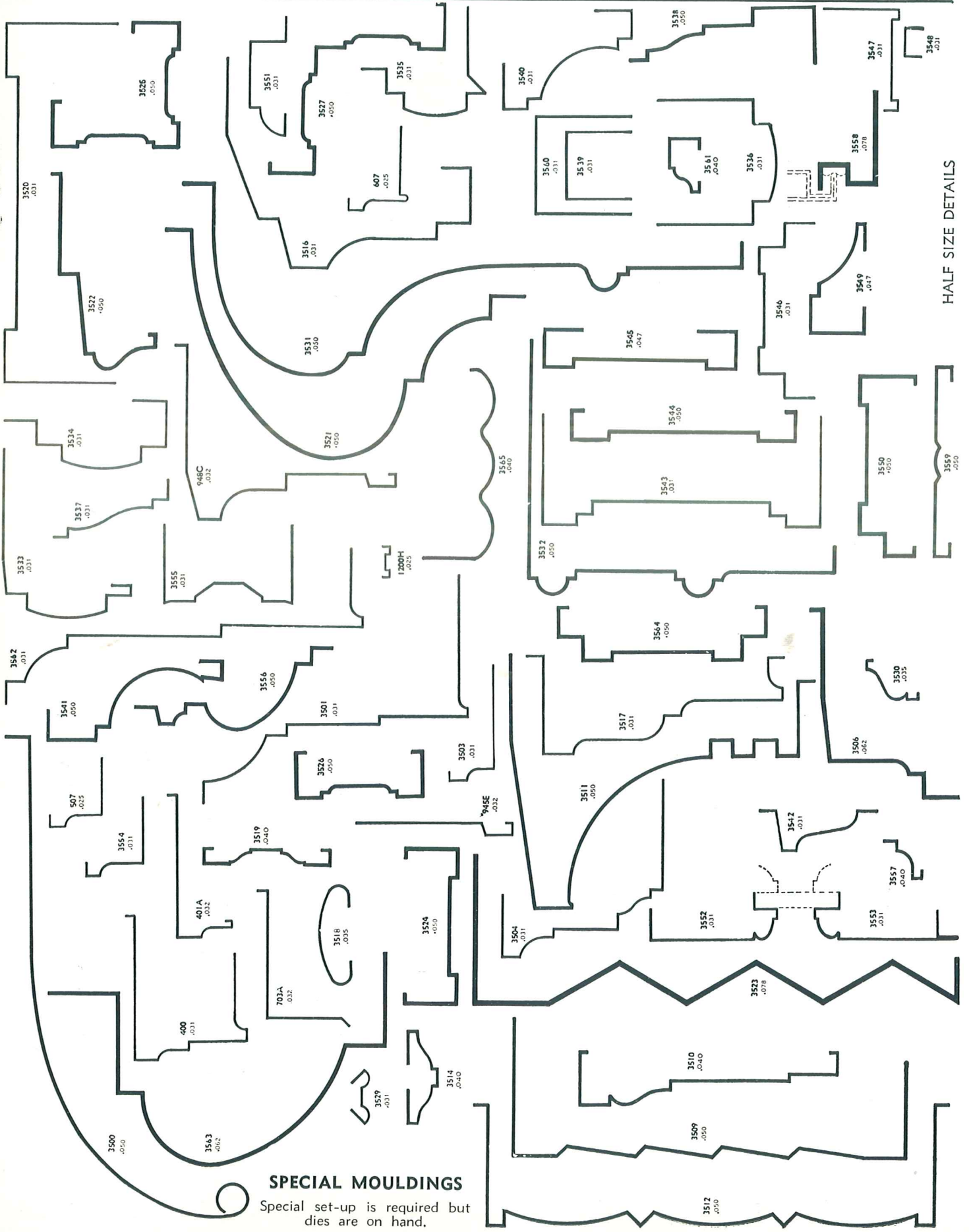
EXTRUDED PILASTER MOULDINGS

HALF SIZE DETAILS



AVAILABLE IN  
ALUMINUM, ALUMILITE,  
BRONZE OR STAINLESS  
STEEL

MOULDINGS  
CARRIED IN STOCK



HALF SIZE DETAILS

**SPECIAL MOULDINGS**

Special set-up is required but dies are on hand.

**SPECIAL METAL WORK**



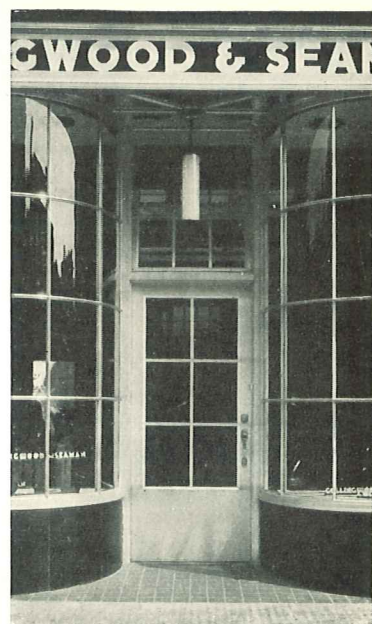
ZOURI sign letters are recommended for architectural beauty and visibility. Fabricated to special details.



ZOURI Metal Entrance Doors and pilasters create an inviting entrance for this restaurant.

ZOURI craftsmen have had wide and varied experience in fabricating all types of special metal work for store front and other architectural purposes. Such work includes metal sign letters, entrance doors, (also available in standard types) cast ornaments, bulkheads, pilasters, metal paneling, clock frames, and special mouldings, shapes, and decorations.

Since modern store front design is making more and more use of metal, this ZOURI service is especially helpful. Discuss your problems with the ZOURI distributor, or write the factory for specific information. Your details and specifications will be carefully followed.



ZOURI entrance door, special sign, and muntins.

**WRITE ZOURI STORE FRONTS, NILES, MICHIGAN, FOR FURTHER DATA**

DATA ON  
RUSTLESS METAL  
STORE FRONTS  
BY

ZOURI

Information, details, and illustrations on the complete line of Zouri Store Front construction in both Extruded and Cold-Rolled types.