

# Washington State Silos & Barns

## Forms and Types



By Michael Houser, State Architectural Historian

April - 2015

# Washington State Heritage Barn - Forms & Types

## Silos



**Wooden Octagonal Silo**  
Asotin Co – c.1895



**Vertical Wood Stave Silo**  
Clark Co. – c.1900



**King Silo**  
Klickitat Co. – 1920

# Washington State Heritage Barn - Forms & Types

## Silos



**Brick Silo**

Spokane Co. – 1919



**Concrete Stave Silo**

Pierce Co. – c.1920



**Glazed Tile Silo**

Clark Co. - 1920

# Washington State Heritage Barn - Forms & Types Silos



**Steel Paneled Silo**  
Pierce Co. – c.1935



**Poured Concrete Silo**  
Grays Harbor Co. – c.1935



**Harvestore Silos**  
Adams County - c. 1948

# Washington State Heritage Barn - Forms & Types

## English Gambrel



Thurston Co. – c.1930



Kittitas Co - 1927



Columbia Co. - 1908



Whatcom Co. - 1923

# Washington State Heritage Barn - Forms & Types

## Dutch Gambrel (note flare at eave line)



Spokane Co  
- c. 1925



Wahkiakum Co. - 1929



Pend Oreille Co. - 1916



Pacific Co. - c.1956



Island Co. - 1914

# Washington State Heritage Barn - Forms & Types

## Gable (sometimes referred to as an English barn)



Adams Co. – 1901



Skagit Co. – 1890



Peirce Co. – 1910



Lincoln Co. – 1902



Skagit Co. – 1904



Kitsap Co. – 1933

# Washington State Heritage Barn - Forms & Types

## Broken Gable / Gable with High Lean-tos



Asotin Co. – c. 1895



King Co. – 1911



Franklin Co. – 1912



San Juan Co. – c.1890



Walla Walla Co. – 1880



# Washington State Heritage Barn - Forms & Types

## Salt Box (integrated lean-to)



Columbia Co. – 1881



Spokane Co. – 1948



Klickitat Co. – c.1910



Lincoln Co. – 1900



Pierce Co. – 1915

# Washington State Heritage Barn - Forms & Types

## Dutch Barn (roof projecting down to 1<sup>st</sup> floor)



Stevens Co. – 1926



Lewis Co. – 1917



Skagit Co. – c.1895



Snohomish Co. – c.1886



Whitman Co. – c.1920

# Washington State Heritage Barn - Forms & Types

## Hip



Island Co. – 1895



Yakima Co. – c.1890

**Washington State Heritage Barn - Forms & Types**  
**Bank Barn (note 2<sup>nd</sup> floor overhang)**



Whitman Co. – c.1910

# Washington State Heritage Barn - Forms & Types

## Gable-on-Hip



Walla Walla Co. – 1893



Snohomish Co. – c.1900



Island Co. – 1880



San Juan Co. – c.1890

# Washington State Heritage Barn - Forms & Types

## Gothic (pointed arch roof truss)



Whitman Co. – 1917



Thurston Co. – c.1925



Clark Co. – 1930



Island Co. – 1919



Spokane Co. – 1926

# Washington State Heritage Barn - Forms & Types

## Round / Bow Truss (note completely arched trusses)



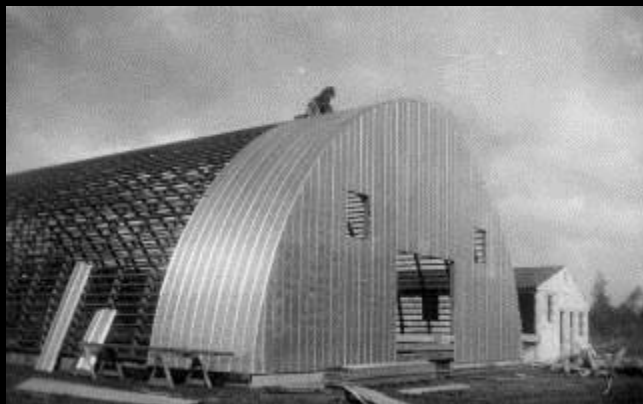
Grays Harbor Co. – 1931



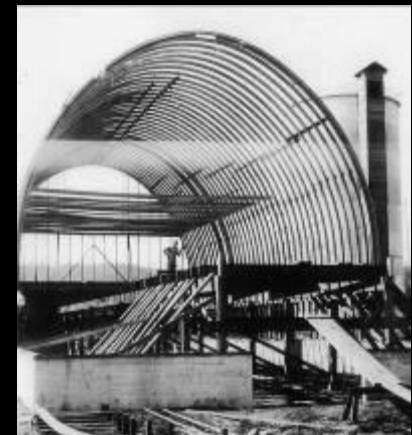
Asotin Co. – c.1925



Clark Co. – 1938



Wahkiakum Co. – 1938



# Washington State Heritage Barn - Forms & Types

## Western Barn/ Monitor Barn / Basilican



Island Co. – 1942



Skagit Co. – c.1900



Kitsap Co. – 1938



Yakima Co. – 1930



Thurston Co. – c.1930



# Washington State Heritage Barn - Forms & Types

## Centric / Round Barns



Klickitat Co. – 1915



Wahkiakum Co. – c. 1912



Lewis Co. – c. 1905



Snohomish Co. – c.1914



Cowlitz Co. – c.1912



Yakima Co. – c.1914



Whitman Co. - 1917



Spokane  
Co. -  
1915



Spokane Co. -  
1916



Whitman Co. - 1916

# Washington State Heritage Barn - Forms & Types

## Hay Hoods



Garfield Co. – c.1910



Whitman Co. - 1929



Pierce Co.– 1915



Kittitas Co.- 1906



Island Co.- 1902



Whitman Co.– 1925

# Washington State Heritage Barn - Forms & Types

## Cupolas



Whitman Co. – 1935



Snohomish Co. – 1932



Adams Co. - 1901



Walla Walla Co.– 1890



Spokane Co. – 1926



Pend Oreille Co. – 1901