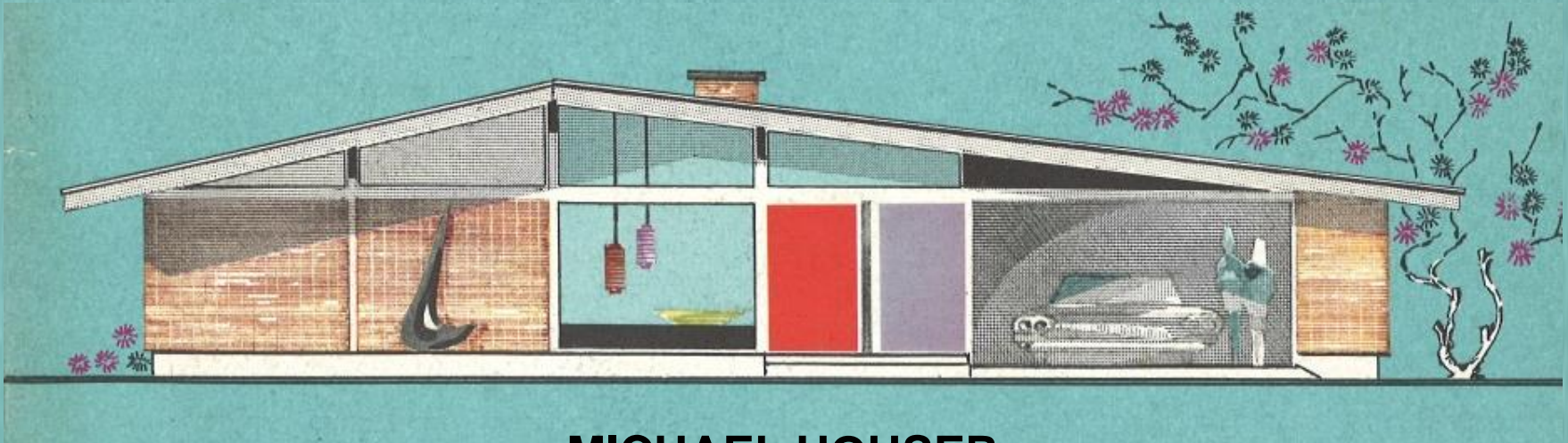




MID-CENTURY MODERN ARCHITECTURE

IN WASHINGTON STATE



MICHAEL HOUSER

State Architectural Historian

DAHP - Olympia, WA

June 2014

CURTAIN WALL

1950-1980

Flat roof with parapet to hide mechanical equipment

Repetitive grid of vertical extruded aluminum mullions and horizontal rails



Rectangular blocky form due to use of pre-engineered exterior sheathing system

Panels of a wide variety of materials and colors including opaque glass, masonite, asbestos, plywood, tile and/or marbled concrete

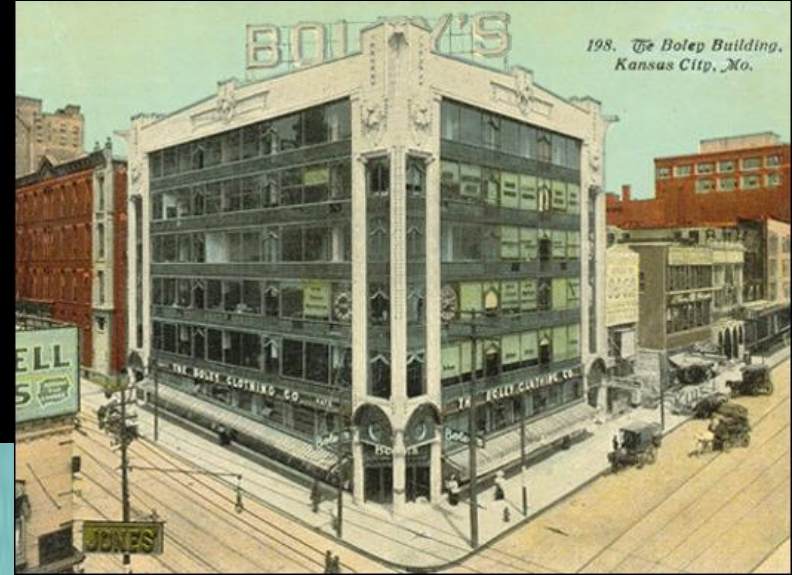
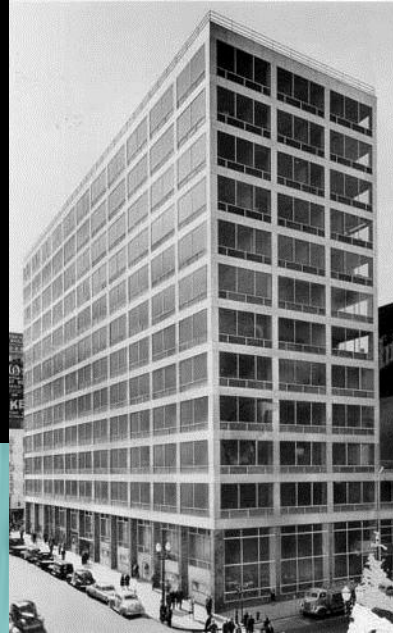
Blue Cross Building Seattle, 1959

CURTAIN WALL

History



**Equitable Building
Portland,
1948**



Boley Building Kansas City, 1909



Cinderella and the glass curtain wall



Cinderella in this story is the old lady who, unattractively and aged, building beauty, style and modernity that has been brought by the magic of glass. Cinderella has been glamorized... and her life is being wonderfully improved.

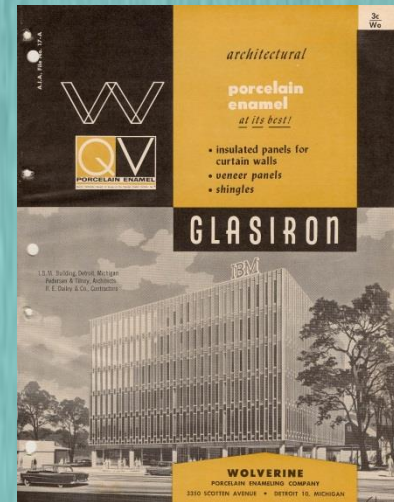
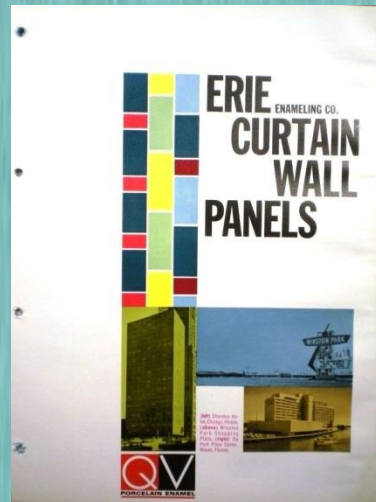
Spandrelite... provides a beautiful glass on curtain-walls that will give the face of the building a new look. It is a curtain wall with a wide range of colors, and it is available in polished or frosted finishes. The glass is made from special magnesium oxide glass of depth and clear shade (selectively) depending on the amount of light to be admitted, and it meets weathering, corrosion and a wide range of temperature variations. It is strong and non-flammable, resistant and economical investment.

The window for Spandrelite is the Porcote 82 X Curtain Wall System which has been thoroughly field tested in important conditions in all sections of the country. It has proved to be a handsome as well as practical solution for the problem of glass curtain wall construction.

Without obligation to you, our Architects, Engineers and Architects, we are ready to furnish you with a complete outline of our Spandrelite system. If you are interested, please write to the Spandrelite Sales Office, PPG Industries, Inc., 1000 North 10th Street, Pittsburgh, Pa. 15222.

PPG Industries, Inc.
1000 North 10th Street
Pittsburgh, Pa. 15222

Name _____
Address _____
City _____ State _____





CURTAIN WALL

Small Scale Examples



Sunset Life Insurance Co. Bellevue, 1959



Bardahl Office Building Seattle, 1957



Federal Offices Olympia, 1957



IBM Building Tacoma, 1963



CURTAIN WALL

Small Scale Examples



Building Seattle, c1965



Building Seattle, c1967



City Hall Richland, 1959



Union Pacific Insurance
Co. Tacoma, 1963

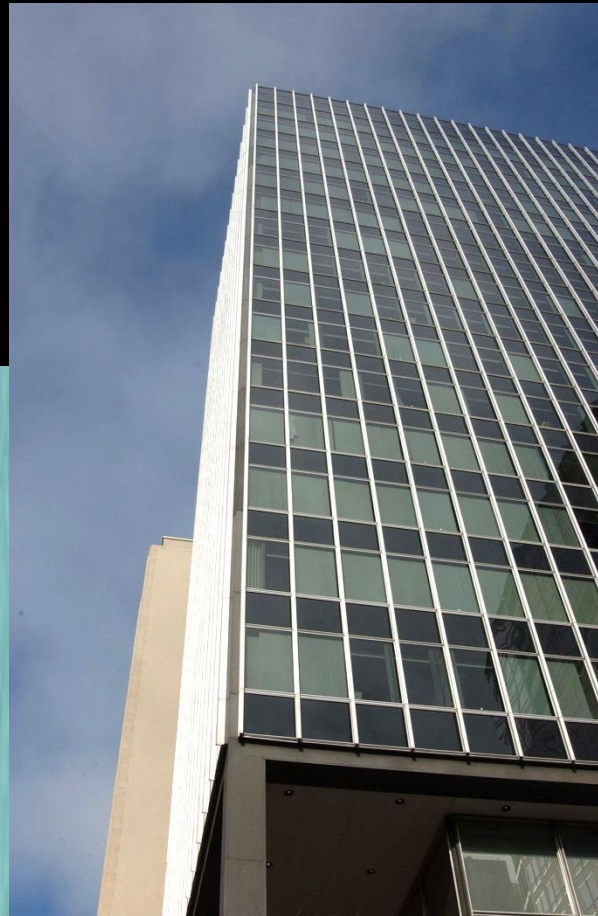


CURTAIN WALL

Large Scale Examples



Washington Water Power Co.
Spokane, 1959



Norton Building Seattle, 1959



Logan Building Seattle, 1959



Capitol Center Building Olympia, 1965