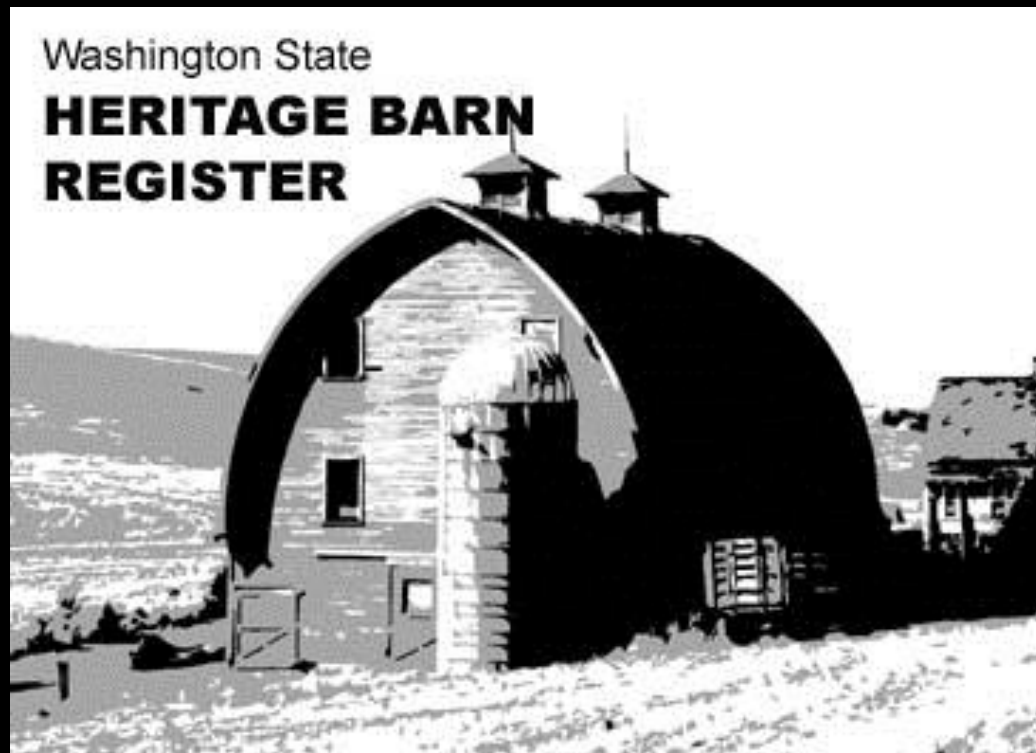


The Washington State
**Department of Archaeology &
Historic Preservation**

Round Twenty Two

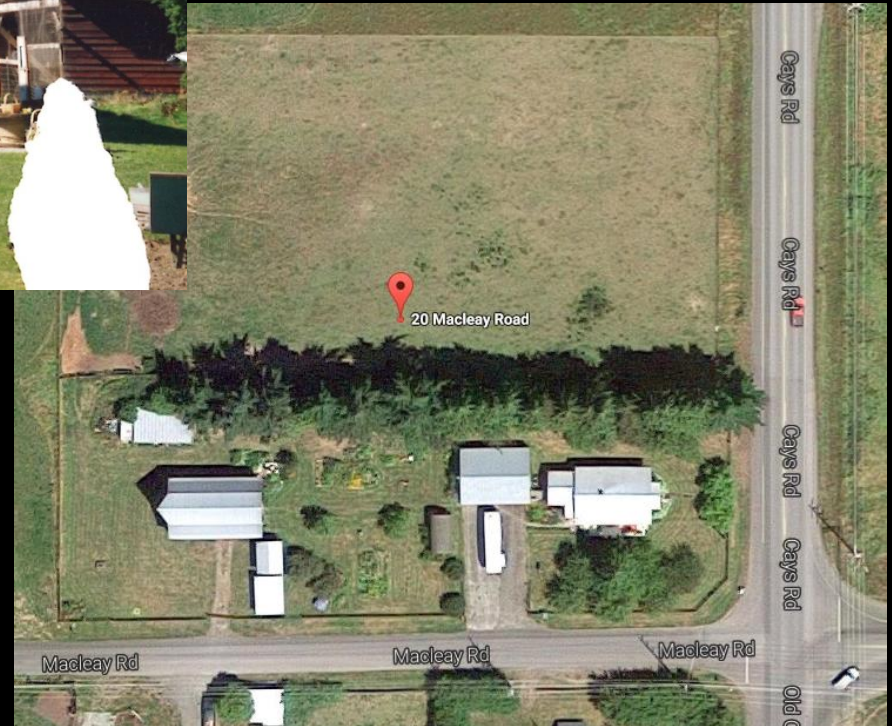


Michael Houser, *State Architectural Historian*



Heritage Barn Nominations - Round Twenty Two

CLALLAM COUNTY



The 1922 Barn, Sequim – 1922

Heritage Barn Nominations - Round Twenty Two

KING COUNTY



Hollyhock Farm, Duvall – c.1920

Heritage Barn Nominations - Round Twenty Two

KLICKITAT COUNTY



Miles Barn, White Salmon – c.1917

Heritage Barn Nominations - Round Twenty Two

LEWIS COUNTY



Marcovitch Barn, Mineral – c.1910



Heritage Barn Nominations - Round Twenty Two

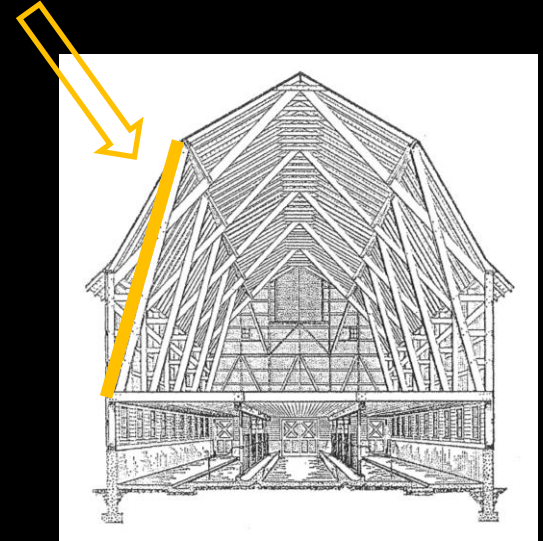
OKANOGAN COUNTY



Northcott Homestead, Winthrop –
c.1890

Heritage Barn Nominations - Round Twenty Two

SKAGIT COUNTY



Shawver Truss System



Kerwin Farm, Burlington – 1932

Heritage Barn Nominations - Round Twenty Two

SPOKANE COUNTY



Paradise Farm, Spokane –
c.1896

Heritage Barn Nominations - Round Twenty Two

WALLA WALLA COUNTY



Kees Barn, Walla Walla – c.1905



Heritage Barn Nominations - Round Twenty Two

WHACTCOM COUNTY



Sorensen Farm, Bellingham – 1896



Heritage Barn Nominations - Round Twenty Two

WHITMAN COUNTY



Conrad Schierman Sr. Farm, Endicott – 1895

Heritage Barn Nominations - Round Twenty Two

YAKIMA COUNTY



Academy Heights Orchard Barn, Yakima – 1910

Washington State
**GOVERNOR'S
ADVISORY COUNCIL
ON HISTORIC
PRESERVATION**

165th Meeting – Tacoma
Oct 7, 2016

