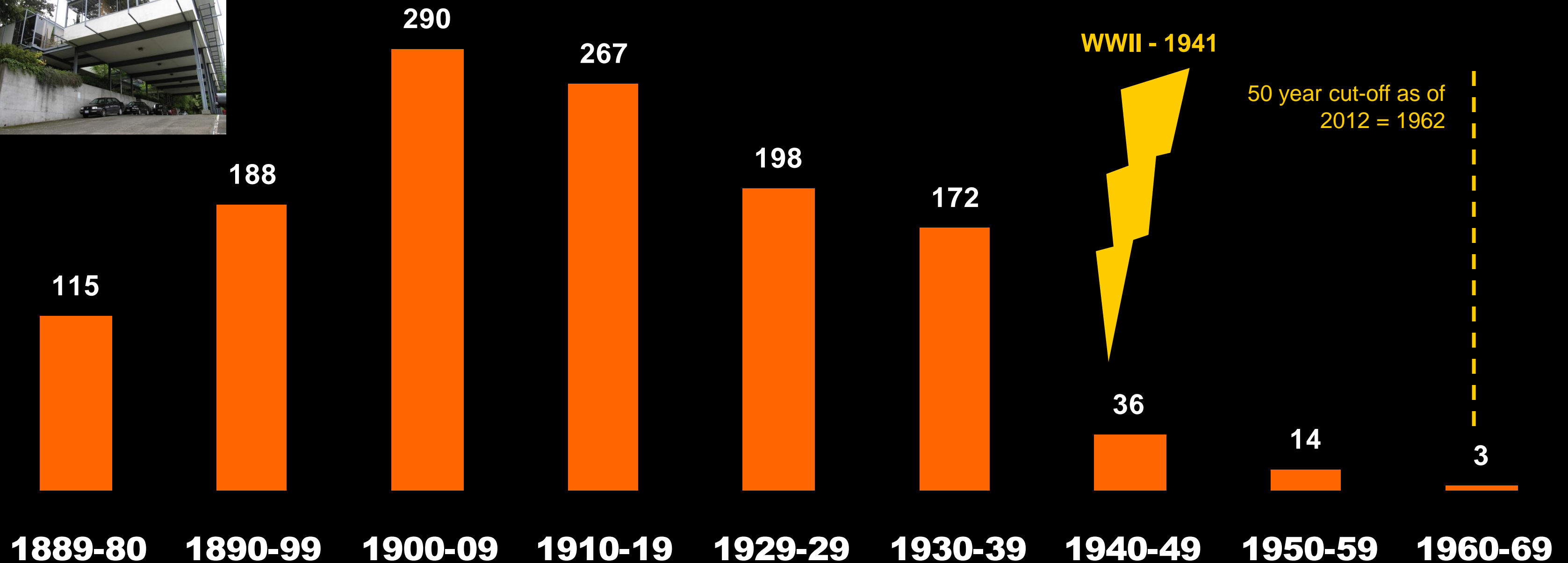


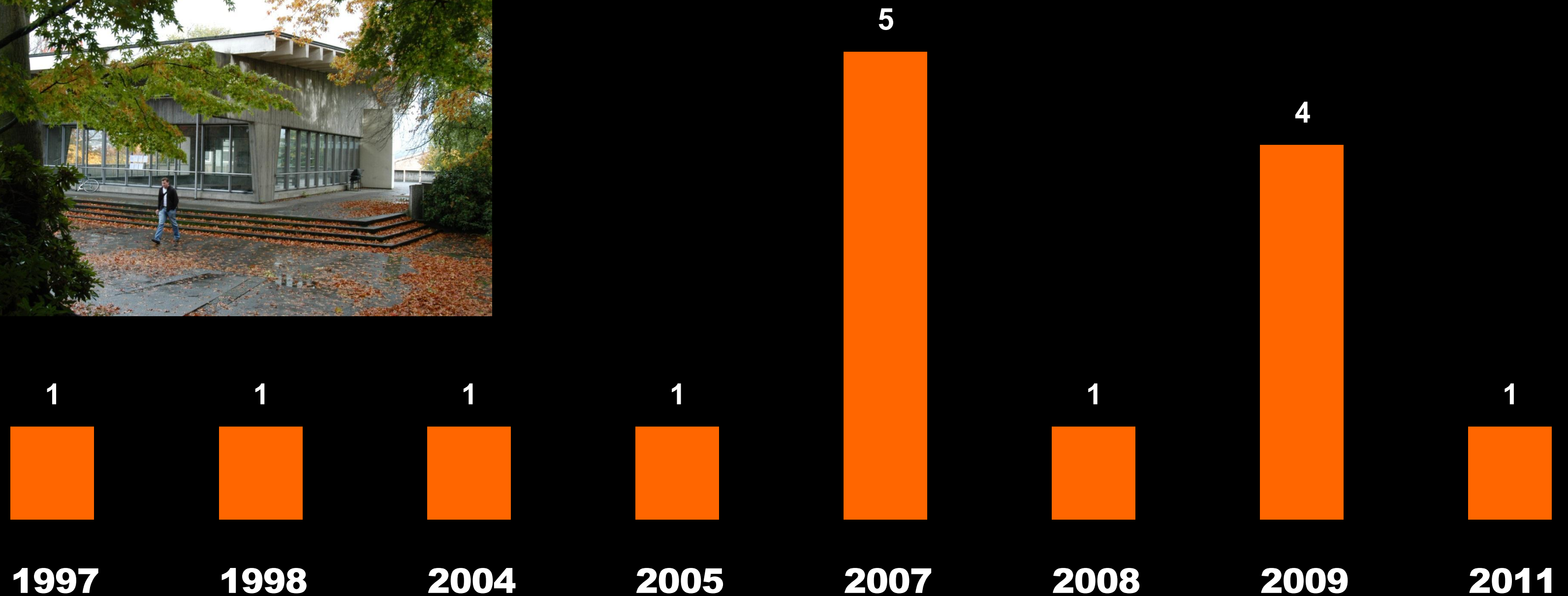
National Register Nominations By Built Date

Trend: Drastically decreasing number of post WWII listing. Shows the need to focus on listing post WWII resources before they are lost.



National Register Nominations of Post WWII Listings By Year Listed

Trend: Random numbers of Post WWII listing. Shows the need to focus on listing post WWII resources before they are lost.

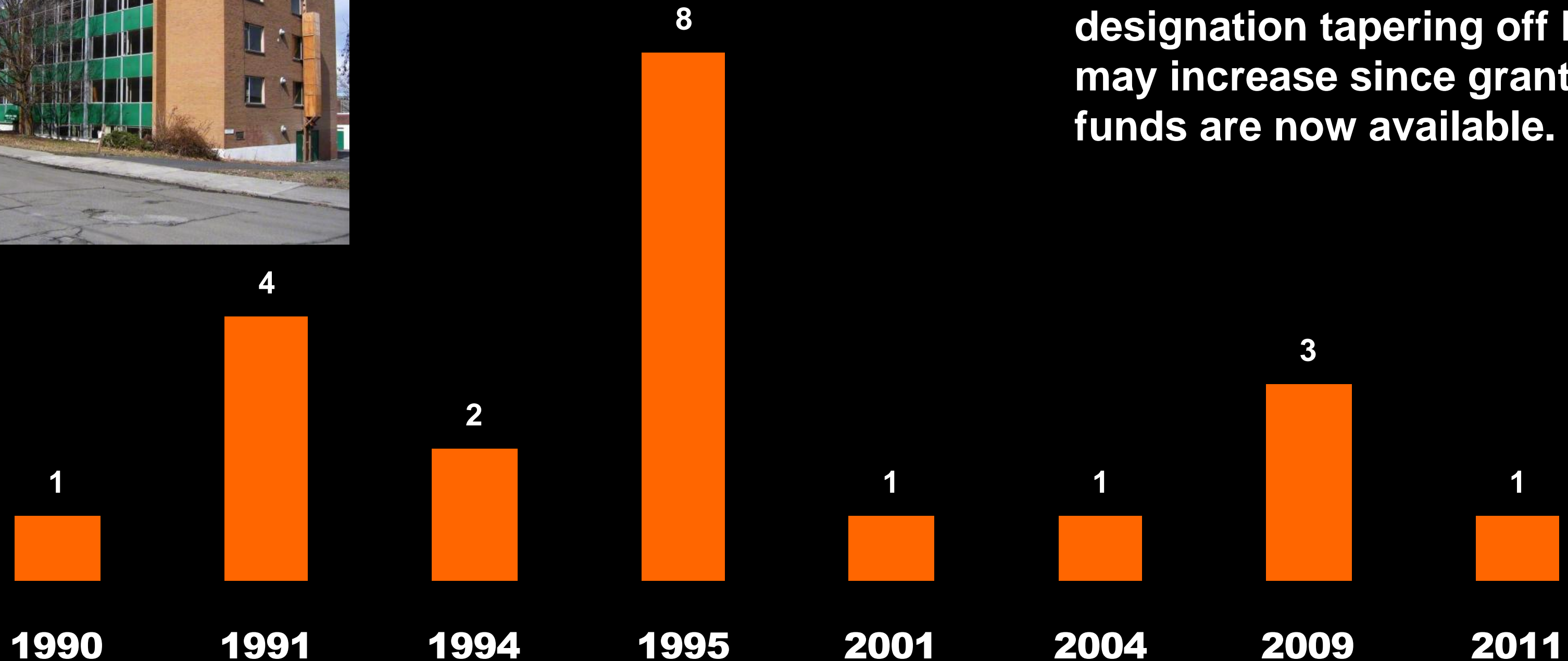


National Register nominations 1990 – 2011

Number of Properties listed under criteria consideration G



Trend: Interest in designation tapering off but may increase since grant funds are now available.



Total Number of NR listings utilizing Criteria G = 22
Criteria G = Exceptional Significance (less than 50 years old)

Local Post WWII Historic Designations

| Name | City | Built Date |
|--|---------|------------|
| Seattle Labor Temple | Seattle | 1942-55 |
| Rohrer House | Seattle | 1949 |
| Medical Dental Building Addition * | Seattle | 1950 |
| Seattle First National Bank (Denny Way Branch) | Seattle | 1950 |
| Nathan Eckstein Jr. High School | Seattle | 1950 |
| NE Branch Library | Seattle | 1954 |
| NW Branch Library | Seattle | 1954 |
| Hat n' Boots | Seattle | 1954 |
| Egan House | Seattle | 1958 |
| Norton Building | Seattle | 1959 |
| Pacific Science Center | Seattle | 1961 |
| Space Needle | Seattle | 1961 |
| Monorail | Seattle | 1961 |
| Horiuchi Mural | Seattle | 1961 |
| Kobe Bell | Seattle | 1961 |
| Magnolia Library | Seattle | 1964 |
| Lake City Library | Seattle | 1965 |
| Magnolia Library | Seattle | 1964 |
| Lake City Library | Seattle | 1965 |
| Gas Works Park | Seattle | 1972 |

Local Post WWII Historic Designations

Name

Donald & Irene Elliott House

Wisniewski House

Second Church of Christ Scientist

Norman Bridge

Stossel Bridge

Foss Rover Bridge

Gaffney's Lake Wilderness Lodge *

Foltz House

* = denotes NR listing

City

Olympia

Olympia

Olympia

King Co.

King Co.

King Co.

King Co.

Spokane

Built Date

1948

1948

1950

1950

1951

1951

1950

1958



NR listing of Post WWII Dwellings

Name

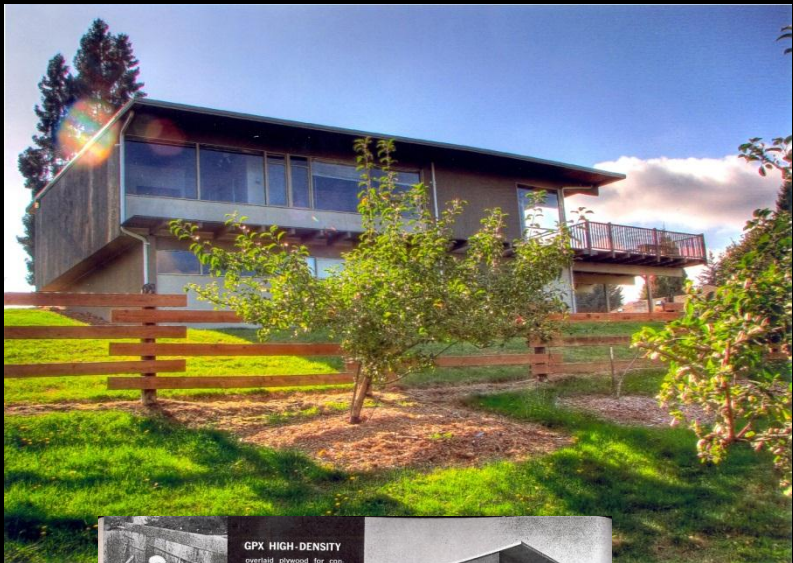
Tracy House
Kenneth & Edna Brooks House
Charles & Mary Louise Curran House
Fred & Elizabeth Young House
Ray Brandes House
Gold Coast Historic District

City

Normandy Park
Spokane
University Place
Yakima
Issaquah
Richland

Built Date

1956
1956
1955
1954
1954
1943-49



GPX HIGH-DENSITY
Laminated plywood for concrete forms means smooth, true surfaces, faster stripping, longer life. No grain patterns on concrete—it's ready to sand. Forms may be re-used immediately without cleaning or oiling and continue to give a smooth clean surface. Contractors report up to 75 re-uses without noticeable deterioration.

GEORGIA-PACIFIC
Hardwood and Fir Plywood, Plywood Specialties, Hardboard, Redwood Products, Lumber, Pulp, Paper, and Containerboard

Look for this new trademark for Georgia-Pacific, manufacturers of one of the nation's largest integrated lines of forest products. The new symbol—like the old one—is always your guarantee of dependable quality and reliable service.

For complete information on GPX or other Georgia-Pacific products, and name of your nearest dealer, call nearest G.P. distribution center or write to Georgia-Pacific, Department No. PB149, Equitable Building, Portland, Oregon.

Alaska: Phoenix • California: Berkeley, Fresno, Los Angeles, North Hollywood, Oakland, Riverside, San Jose • Connecticut: Meriden
District of Columbia: Washington • Georgia: Atlanta • Illinois: Chicago 17, Chicago 26, East Peoria • Indiana: New Orleans, Lafayette • Iowa
Leavenworth, Marshall, Burlington, Keosauqua • Massachusetts: Weymouth • Michigan: Grand Rapids, Royal Oak • Missouri: St. Louis • Montana: Billings • New
Hampshire: Manchester • New Jersey: Long Branch, Port Newark, Union • New York: New York Park 1, 2, Yonkers • North Carolina: Charlotte
Ohio: Akron, Cleveland, Toledo • Oregon: Eugene, Portland • Pennsylvania: Allentown, Lancaster, New Castle, Philadelphia, Pottsville, Scranton
Rhode Island: Providence • South Carolina: Columbia, Greenville • Texas: Dallas, Fort Worth, Houston, El Paso, San Antonio • Utah: Salt Lake City
Virginia: Richmond • Washington: Olympia, Pasco, Seattle, Spokane, Tacoma • Wisconsin: West Allis • Contributions to other areas: G.P. Office



National AIA Award Recipients from WA State

1952-1979 (only one listed on NR)

Gaffney's Lake Wilderness Lodge - Maple Valley

Marshall Forest House – Bellingham

Lakeview School - Mercer Island (demolished)

Gerald Martin House - Seattle

U of W Men's Hall – Seattle

NW Branch Library – Seattle

WA State Bank – Bellevue (demolished)

Central WA Water Power Bldg – Spokane

Tradewell Market – Burien

Japanese Presbyterian Church – Seattle

Winkenwerder Laboratory (U of W) – Seattle

Ridgeway Men's Dorm (U of W) – Seattle

East Pine Receiving Station – Seattle

Convent of Holy Names – Spokane

Weyerhaeuser Headquarters – Federal Way

Arts, Drama & Music Complex (CBC) – Pasco

Sixty-01 Apartments – Bellevue

Bystrom Beach Cabin -

Lindstrom House – Bainbridge Island

1952 Honor – Recreational

1953 Merit – Single Fam.

1954 Merit – School

1954 Merit – Single Fam.

1955 Merit – College

1957 Merit – Library

1958 Merit – Bank

1959 Honor – Office

1959 Merit – Retail

1965 Merit – Religious

1966 Merit – College

1967 Honor – College

1968 Honor – Industrial

1969 Honor – Religious

1972 Honor – Office

1978 Honor – College

1978 Honor – Mult. Fam

1979 Honor – Single Fam.

1979 Honor – Single Fam.

